

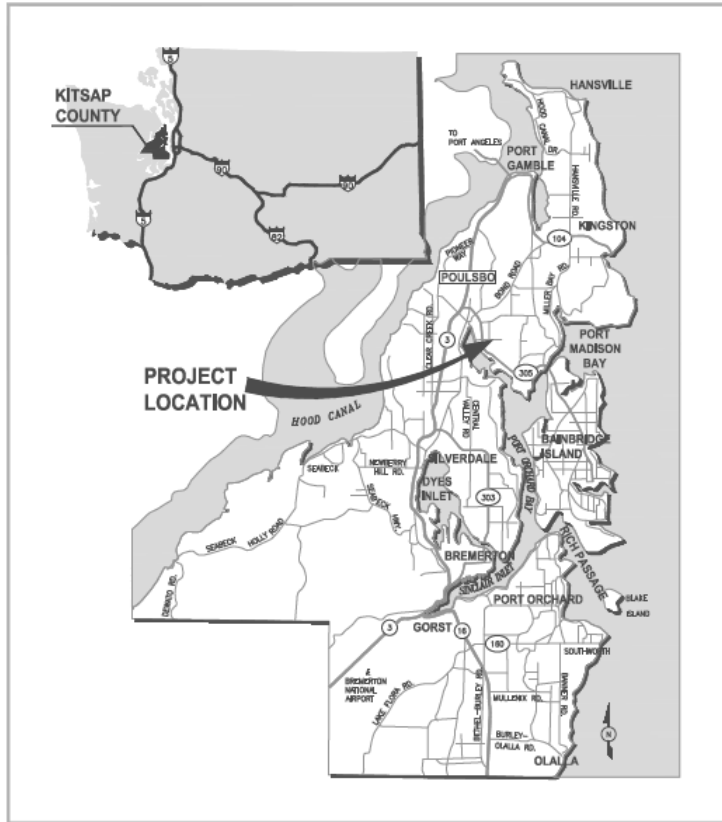


2023 PSRC RURAL TOWNCENTERS AND COORIDORS PROJECT

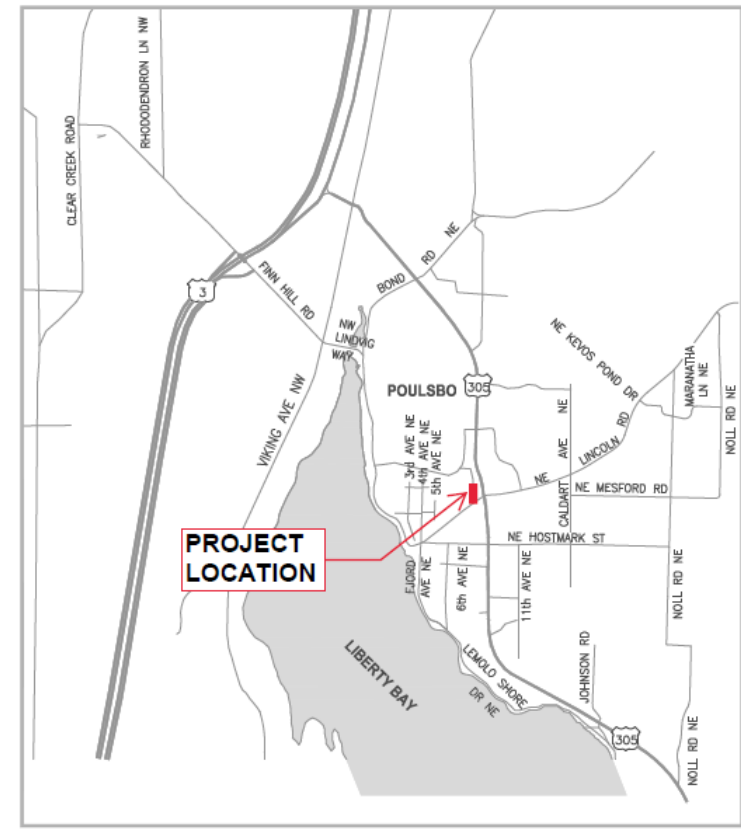
***8th AVENUE REALIGNMENT,
SAFETY, AND TRANSIT STUDY***

City of Poulsbo

August 09, 2023



VICINITY MAP



LOCATION MAP



**FIGURE 1. VICINITY AND LOCATION
8th Avenue Realignment, Safety and
Transit Study
City of Poulsbo**

8th Ave Realignment – Transit & Safety Improvements PLANNING STUDY

Long range study to address:

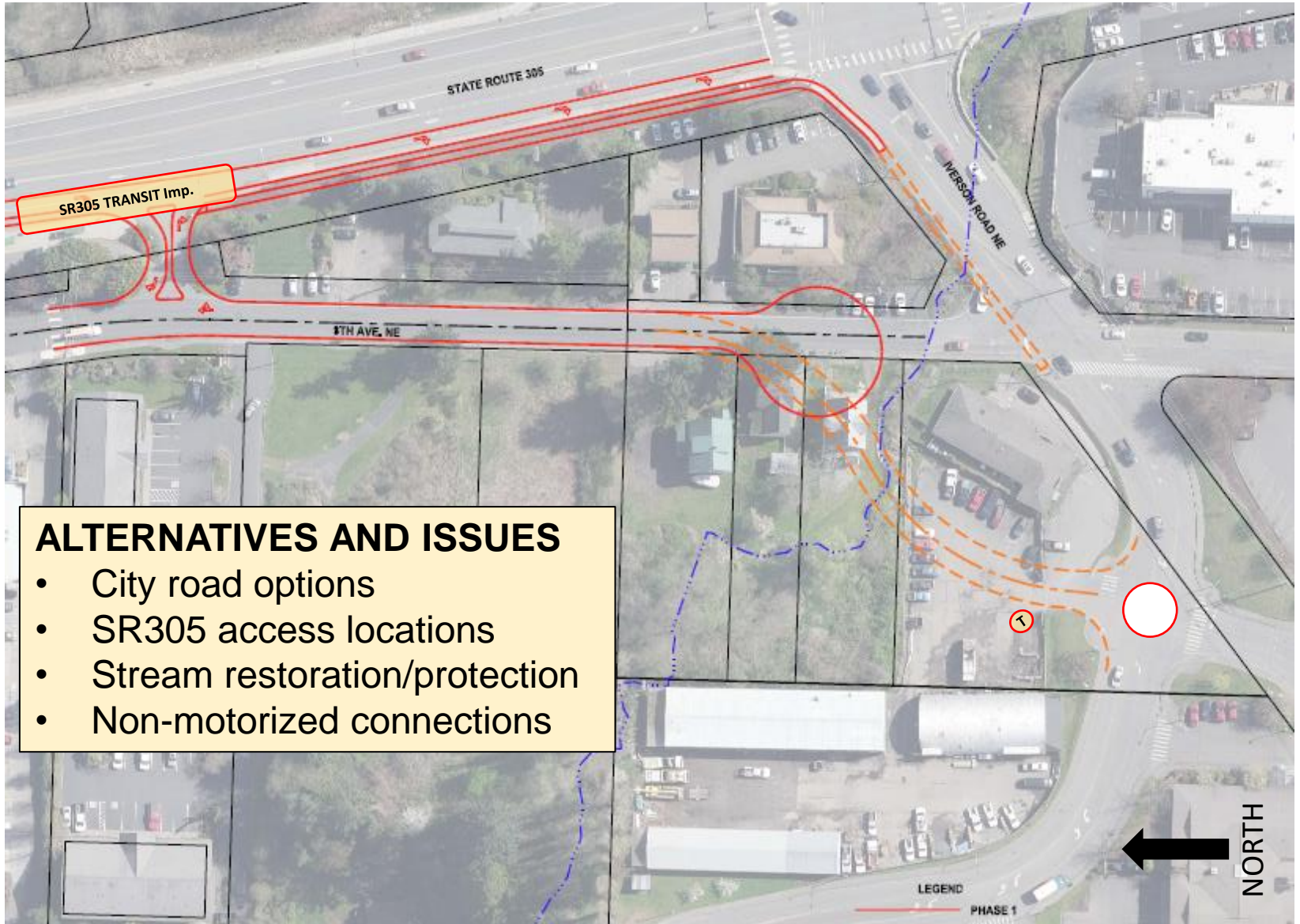
- Potential realignment of 8th Avenue
- SR305 – Kitsap Transit bus rapid transit/HCT modal hub
- Intersection & pedestrian safety

Partnership with Kitsap Transit

Budget: \$360,000

2024-2026 project – Flexible schedule





ALTERNATIVES AND ISSUES

- City road options
- SR305 access locations
- Stream restoration/protection
- Non-motorized connections

Alignment with Selection Criteria

LOCAL AND REGIONAL POLICY SUPPORT

- Meets primary transportation planning goals -increases connectivity, access and reduces congestion
- Consistent with multiple City Comprehensive Plan goals and policies
- Specific action of Kitsap Transit Long Range Plan for SR305 HCT

CIRCULATION AND MOBILITY

- Provides multi-modal connection hub on City property at central location
- Eliminates LOS F intersection where adding capacity not feasible
- Helps implement Kitsap Transit priority HCT regional centers link

SYSTEM PERFORMANCE

- Decreases congestion and delay on SR305 – Kitsap’s most congested corridor
- Improves performance of SR305 corridor and City network
- Provides more travel options for City residents and regional corridor/commuters

EQUITY

- Serves highest levels of low income and people of color population in N. Kitsap
- Improves access to local and regional transit, housing and employment
- Improves ADA accessibility
- Significant public outreach to date by City and KT – will continue as part of study

SAFETY

- Realignment/geometric improvements enhances safety for all modes
- Consistent with City Safety Plan – priority #1 is to reduce vehicle & non-motorized accidents

THANK YOU!
QUESTIONS??

