

August 9th, 2023



McCLELLAN AVE IMPROVEMENTS

Dan Marcinko, Capital Projects & Grants Manager

& Fred Young | Parametrix | Active Mobility Specialist

McCLELLAN: EXISTING CONDITIONS

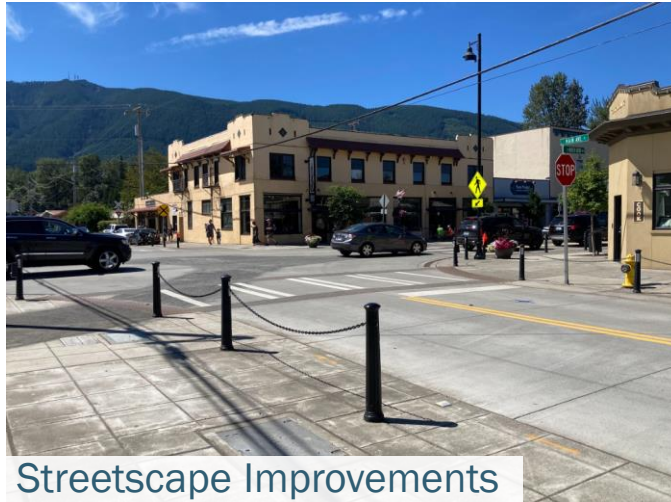
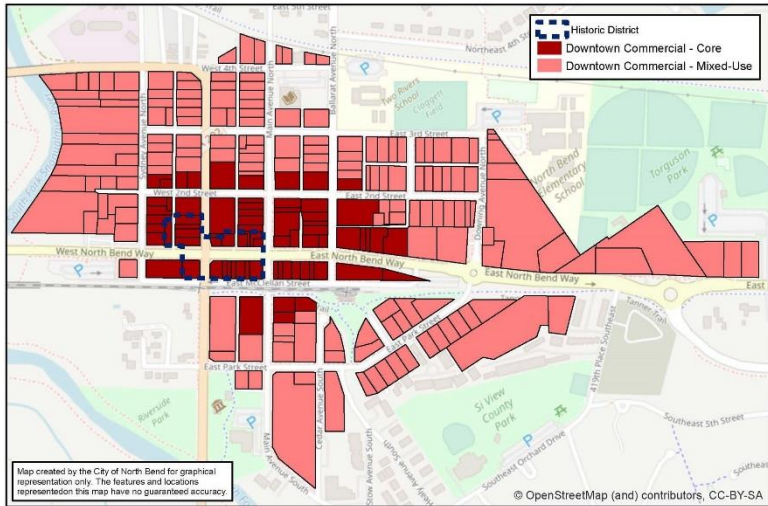


- Identified in City's six-year TIP
- Concerns / Issues
 - Congestion at key intersections downtown
 - Pedestrian safety in downtown that supports North Bend economy
 - Poor access to existing businesses
 - Limited connection to recent streetscape improvements on North Bend Way



EagleView Technology

McCLELLAN: CONTEXT

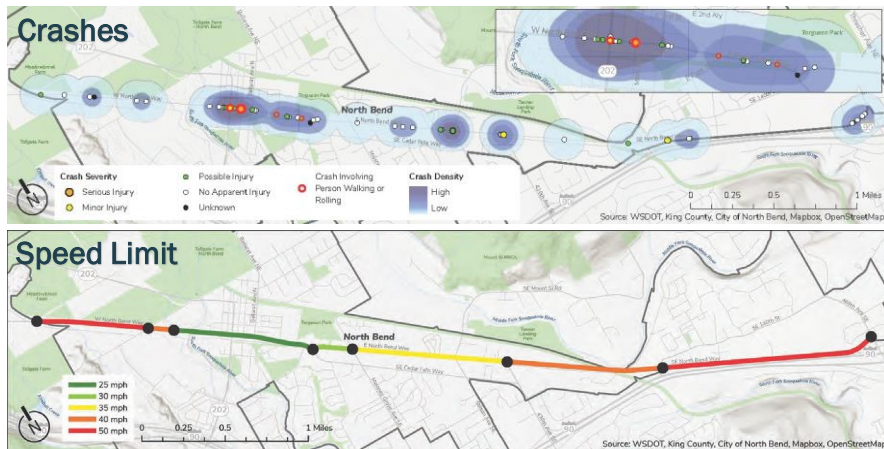


Streetscape Improvements



Railroad Heritage

Form Based Code (2021)



North Bend Way Complete Street Plan (2023)



North Bend Historic District

McCLELLAN: CURRENT PLANNING STUDY



CLEAR PEDESTRIAN ZONE WITH PARKING & OUTDOOR SEATING

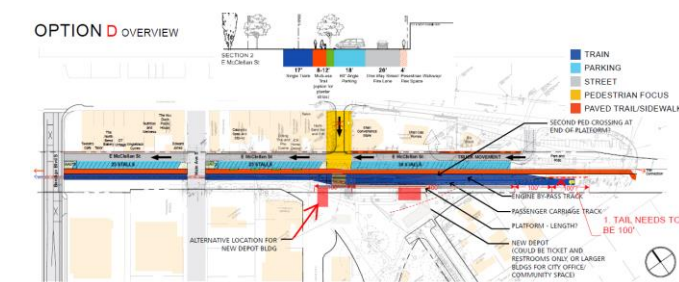
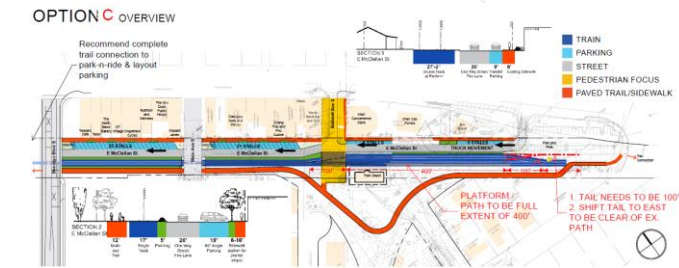
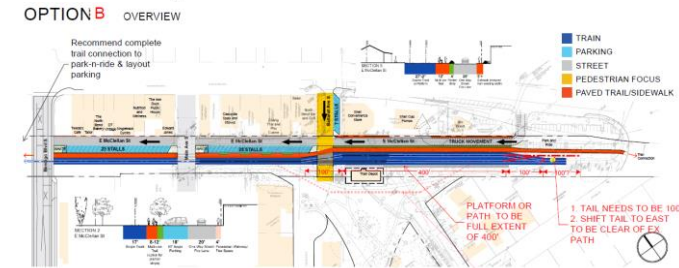
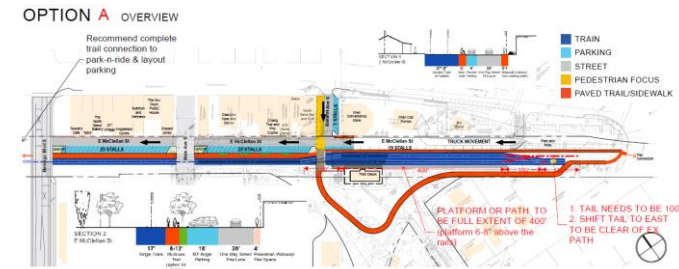


CLOSED TO TRAFFIC FOR EVENTS



OUTDOOR SEATING, STREET TREES AND LANDSCAPE AREAS

- All construction within existing right of way
- Shift from motor vehicle focus to pedestrian focus
- Pedestrian improvements
 - Pedestrian scale lighting
 - Rail crossing safety features
 - Street crossing safety features
- New pedestrian plazas
 - Ballarat Avenue will be closed to motor vehicles
 - Main Ave. will be closed to motor vehicles
- Shared use path along railroad tracks
 - Provides connection from downtown to local, regional, and statewide trail networks
- Improved connections to access historic railway



McCLELLAN: BENEFITS



- Local economy
 - Enhanced outdoor seating
 - Attractive streetscape for events
- Safety, accessibility, and social equity
 - Reduces traffic in pedestrian focus area (Core Business District)
 - Provides expanded and dedicated facilities for people walking, rolling, and bicycling
- Mobility
 - Reduces traffic volumes and congestion
 - Improves circulation in Core Business District and reduces traffic at SR 202 and North Bend Way
 - Improves freight mobility
- Environmental and Public Health
 - Lowers vehicle emissions by reducing travel route length
 - Lowers vehicle emissions by reducing queue times for local traffic
 - Improves access to passive recreation at City Park



McCLELLAN: TIMELINE

2024
Design

2025
Construction





ANY QUESTIONS?

Dan Marcinko, Capital Projects & Grants Manager

& Fred Young | Parametrix | Active Mobility Specialist