

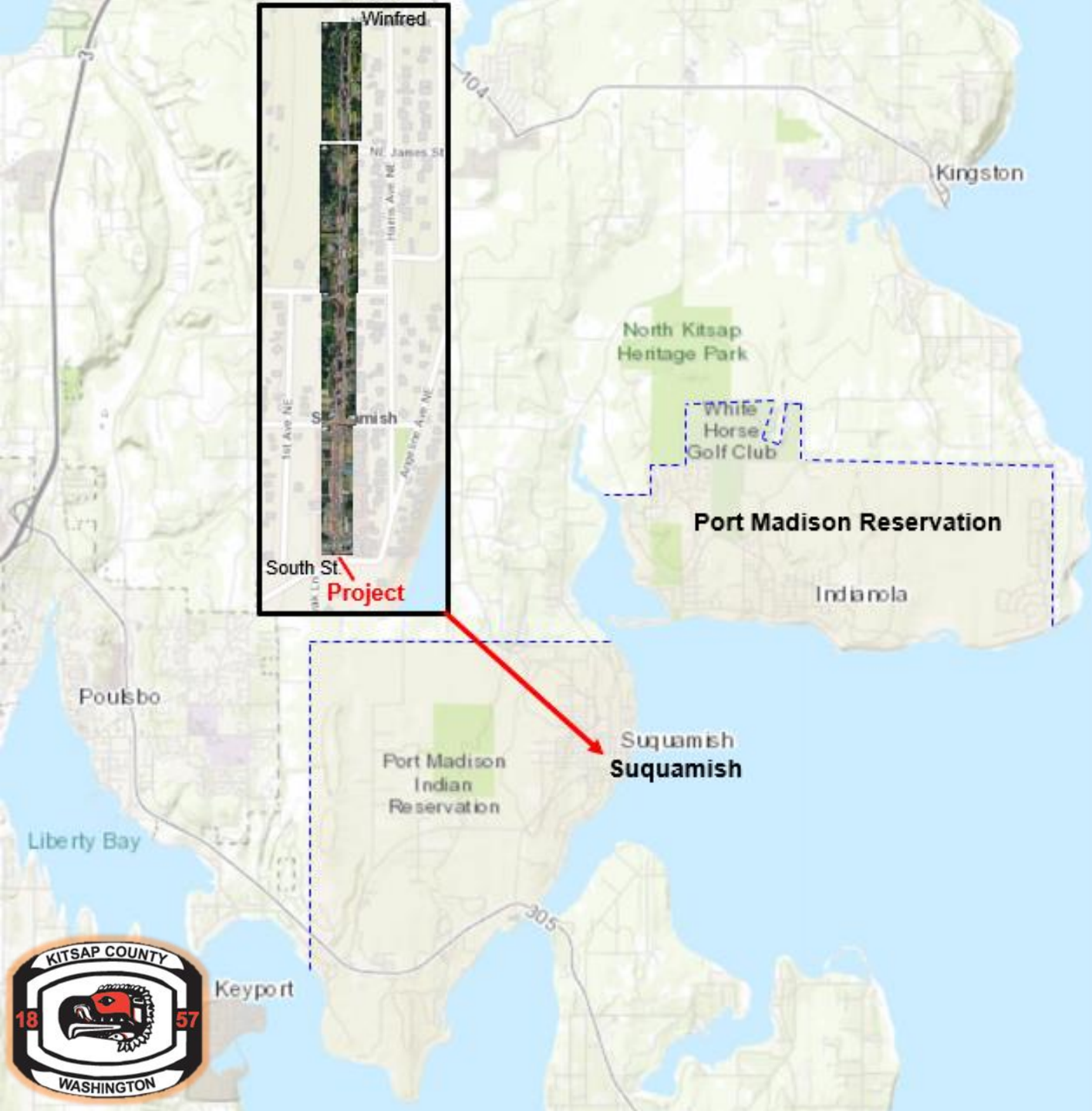
Suquamish/Augusta – South St. to Winfred

Suquamish,
Kitsap County



Suquamish

- Suquamish Tribe – Port Madison Reservation
- Local Area of More Intensive Rural Development (LAMIRD)
- Suquamish Way – Augusta – Miller Bay Rd. corridor major connector to:
 - North Kitsap
 - Kingston
 - Indianola
 - Four Corners
 - Port Gamble S’Klallam Tribe
 - Hansville
 - Hood Canal Bridge





Suquamish

- Suquamish/Augusta – South St. to Winfred
- Approx. 2,800' – Existing Conditions





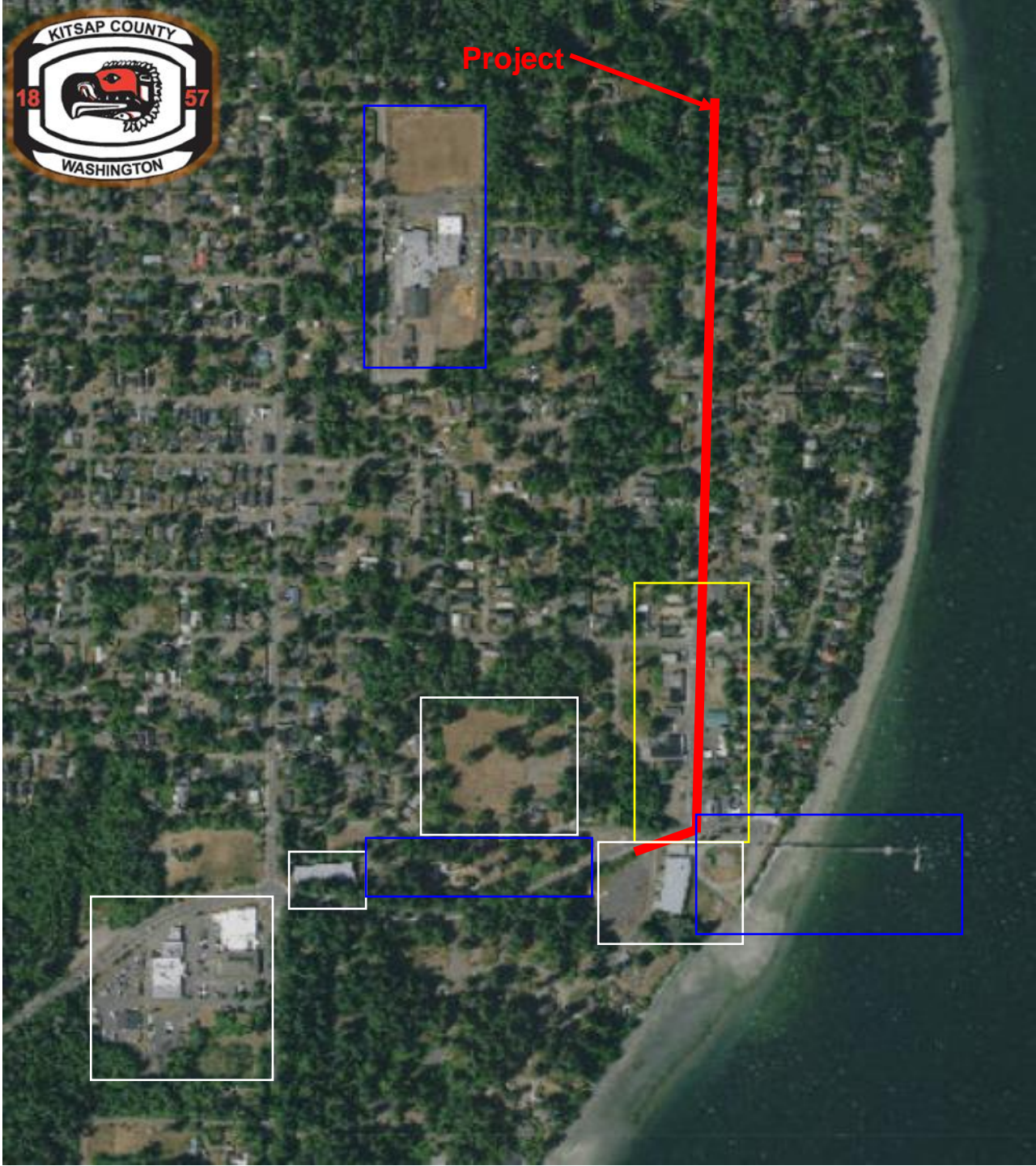
Suquamish

- Commercial Center
 - Grocery
 - Services
 - Fire Department
 - Post Office



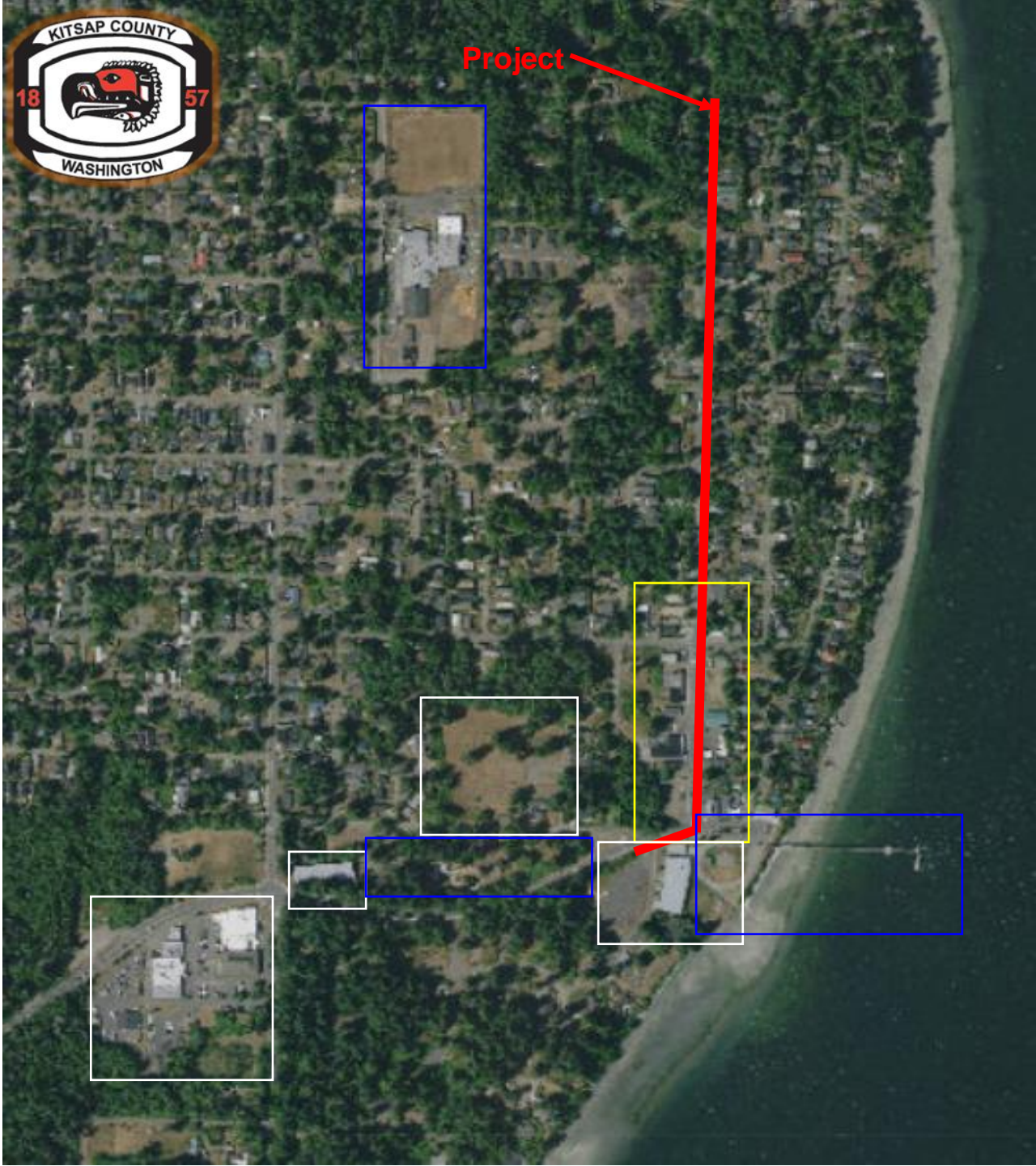
Suquamish

- Commercial Center
 - Grocery
 - Services
 - Fire Department
 - Post Office
- Suquamish Tribe
 - Administrative Center
 - Tribal Police
 - Museum
 - Historic Cemetery
 - Cultural Center



Suquamish

- School
- Recreation
 - Park
 - Marina
 - Puget Sound beach access



Suquamish

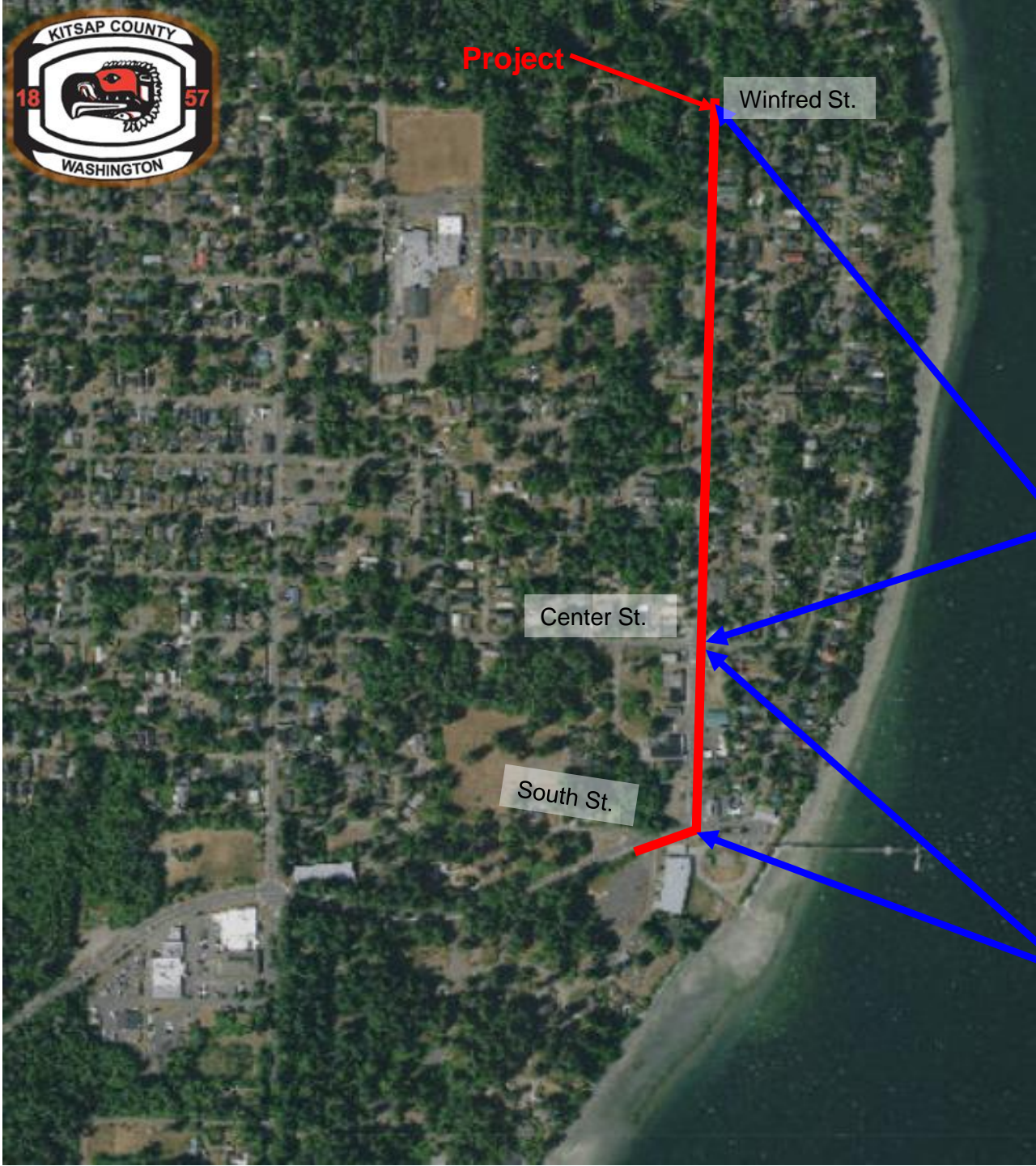
The Problem....

Connections within the Community

- Walking and Biking within Suquamish
- Safety

Project concerns....

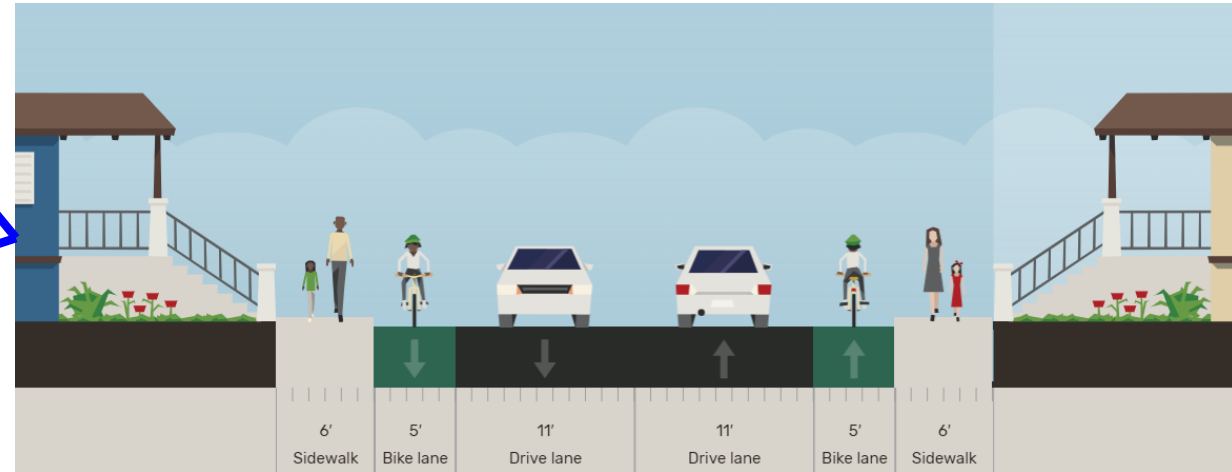
- ROW - Tribal Trust Lands
- Stormwater permitting
- Parking & business access



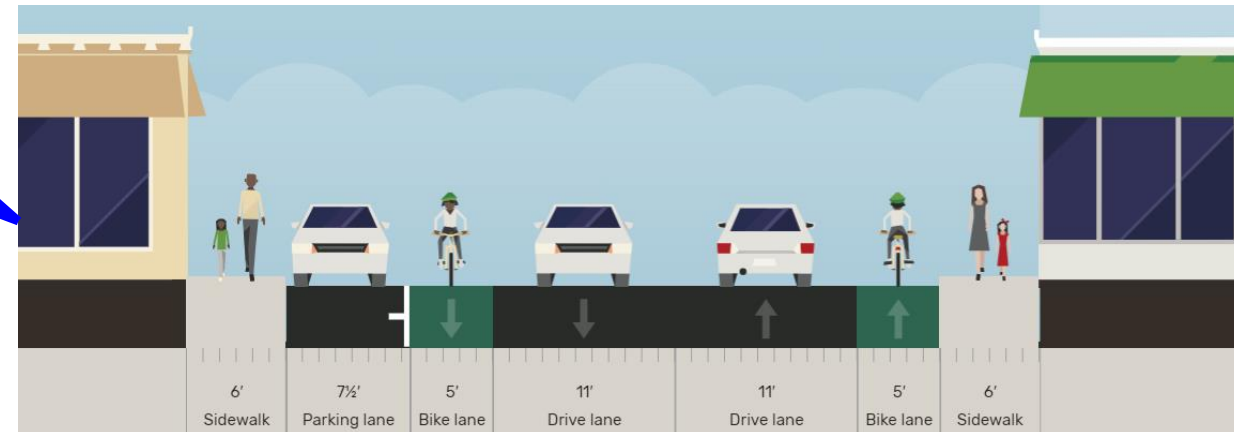
Suquamish

The Solution (conceptual)....

Center St. to Winfred S.



South St. to Center St.





Suquamish

The Details....

Phase	Funding
PE	\$450,000 STP \$70,000 Local
ROW	\$600,000 Local
Construction	\$2,500,000 Grant \$704,000 Local
Total	\$3,204,000