

Regional Transportation Plan Development



Puget Sound Regional Council



We are leaders in the region to realize equity for all. Diversity, racial equity and inclusion are integrated into how we carry out all our work.

psrc.org/equity

Overview

- RTP Development –
 - Current Transportation System work program and highlights
 - Upcoming work
 - Future investments and financial strategy
 - Board discussions
 - Including climate and safety plans

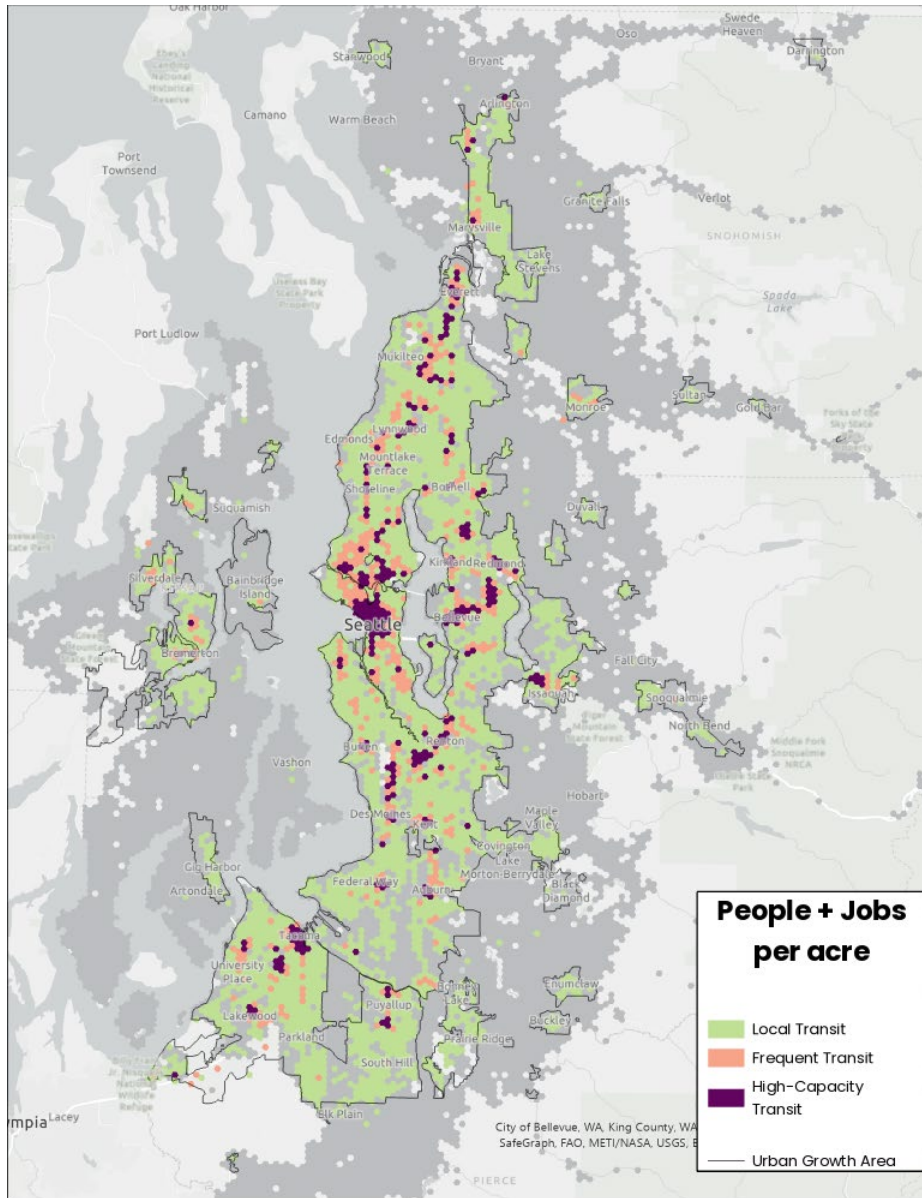


Current Transportation System

- Doing a deeper dive into the current system, including an identification of gaps:
 - Transit – including ferries, specialized services, MOD, TDM, etc.
 - Pedestrian and bicycle
 - Streets and highways – including ITS
 - Freight
 - Maintenance and preservation
- Interim current system report scheduled for release late April



Current Transportation System



The Regional Transportation Plan will look at where people & jobs are today and planned for in 2050 – at varying densities – and identify potential gaps in the transportation system supporting those places.



Current Transportation System – Transit Example

Transit Service & Densities

Density	Frequency & Span	Transit Service
at least 7 people + jobs per acre	Service with at least 2 trips per hour between 6am and 8pm	Local Transit
at least 15 people + jobs per acre	Service with at least 3 trips per hour between 4am and 10pm	All Day Service
at least 25 people + jobs per acre	Service with at least 5 trips per hour between 6am and 6pm	Frequent Service
at least 40 people + jobs per acre	BRT, Light Rail, Commuter Rail or Ferry	High-Capacity Transit

All analysis will include details for:

- Equity Focus Areas
- Counties
- Regional Geography
- Regional Centers



Regional Transit Access Assessment

“...Develop and update tools and resources to **help identify where access to transit can be improved**, particularly for bicyclists and pedestrians. ”

Transit access in RTP:

- Transit-Oriented Development (TOD)
- Walk, Bike, and Roll
- Transit Service
- Drop-off/Pick-up Modes
- Parking



Current Transportation System – Next Set

- March TPB – Streets & Highways, Freight, ITS
 - *Regional system*
- Will report on key trends, uses of the system
- Overlaid with severe and heavy congestion, High Injury Network, other parameters
- Looking at unique locations, contexts around region



Board Discussions and Schedule

- Reviewing gaps and identifying needs
- Analysis of current system will feed into discussion of future system and investments – proposed and needed
 - **Regional Capacity Call for Projects** – week of March 24
 - **Regional Workshop** – March 25
 - Concurrent gathering of programmatic investments
 - **May & June TPB** – board discussion of investments, financial strategy



Board Discussions and Schedule

- Additional board discussions on how the **Regional Safety Action Plan and Comprehensive Climate Action Plan** will inform the RTP
- Review of RSAP public comments in March and April
- April recommendation on RSAP, adoption at General Assembly in May
- Staff working on discussion points for the RSAP – propose to begin with what's already being done, incorporated in PSRC planning work



Draft Safety Talking Points

- The Safe System Approach, proven safety countermeasures and a statement of commitment are incorporated into the project selection criteria
- Safety is included in the Regional Capacity Call for Projects, and will be updated to reflect the same parameters
- *Potential consideration – for the regional system, address the regional High Injury Network; for local systems, address local High Injury Networks*
- Further board discussions on other future work programs and priorities

