

Government Relations Updates

Regional Staff Committee

February 20, 2025

Updated
as of
2/20/2025



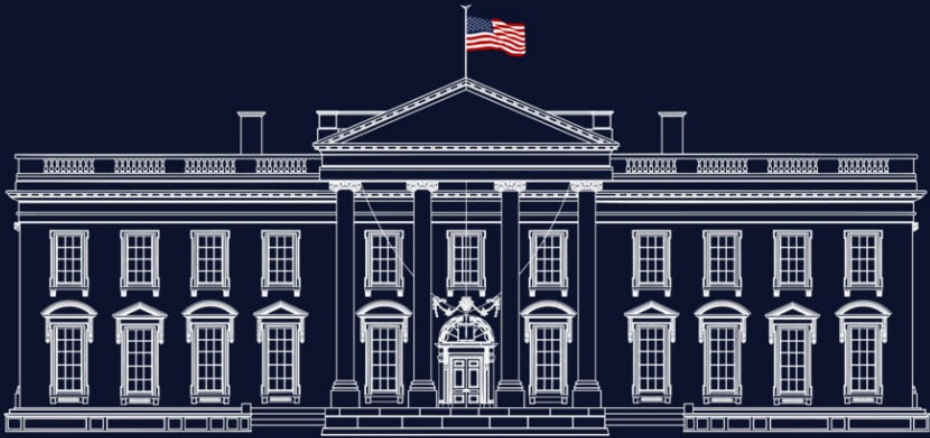
Puget Sound Regional Council



We are leaders in the region to realize equity for all. Diversity, racial equity and inclusion are integrated into how we carry out all our work.

psrc.org/equity

Federal: Executive Orders



- Over 50 Executive Orders
- Immigration and border, climate, energy, regulatory freeze of rules pending review, federal return to work, hiring freeze, termination of DEI programs



Executive Orders: Local Government Impact

- [Unleashing American Energy](#)
- [Protecting the American People Against Invasion](#)
- [Ending Radical and Wasteful Government DEI Programs and Preferencing Executive Order](#)



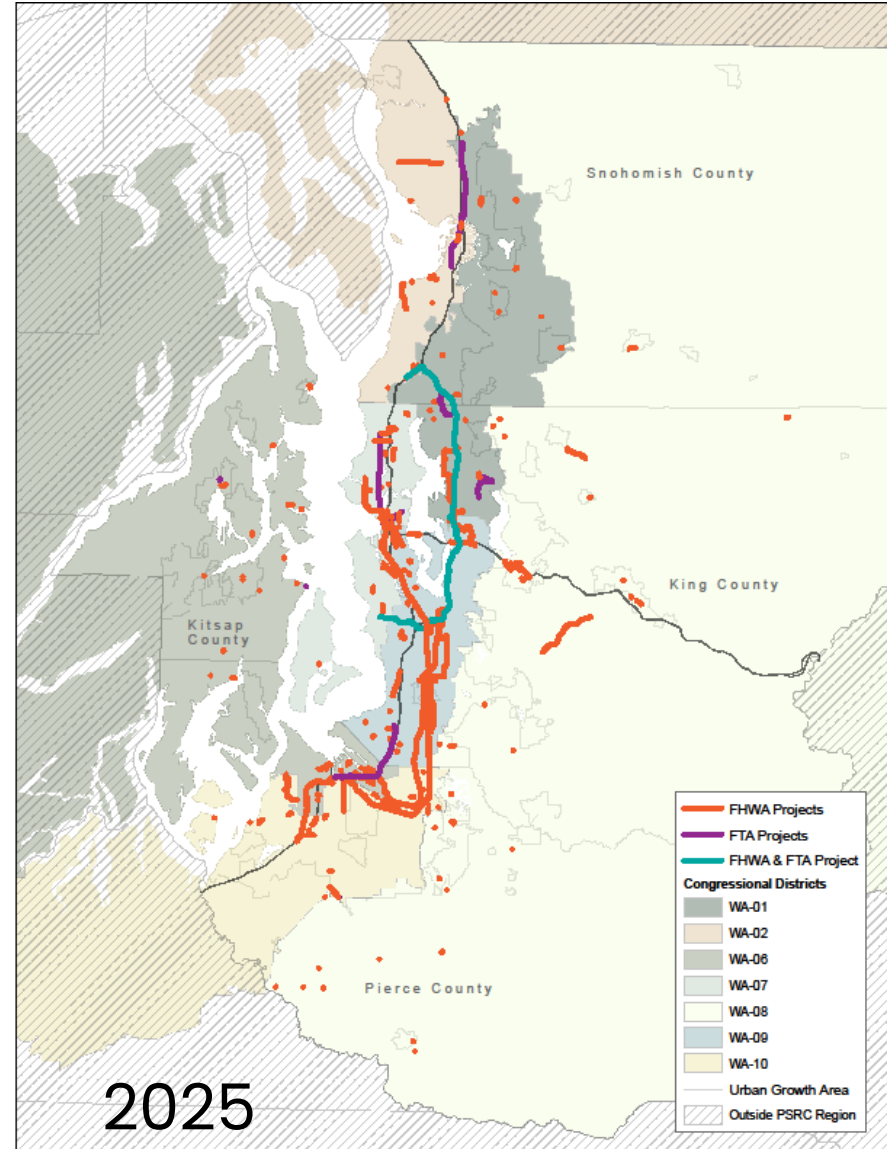
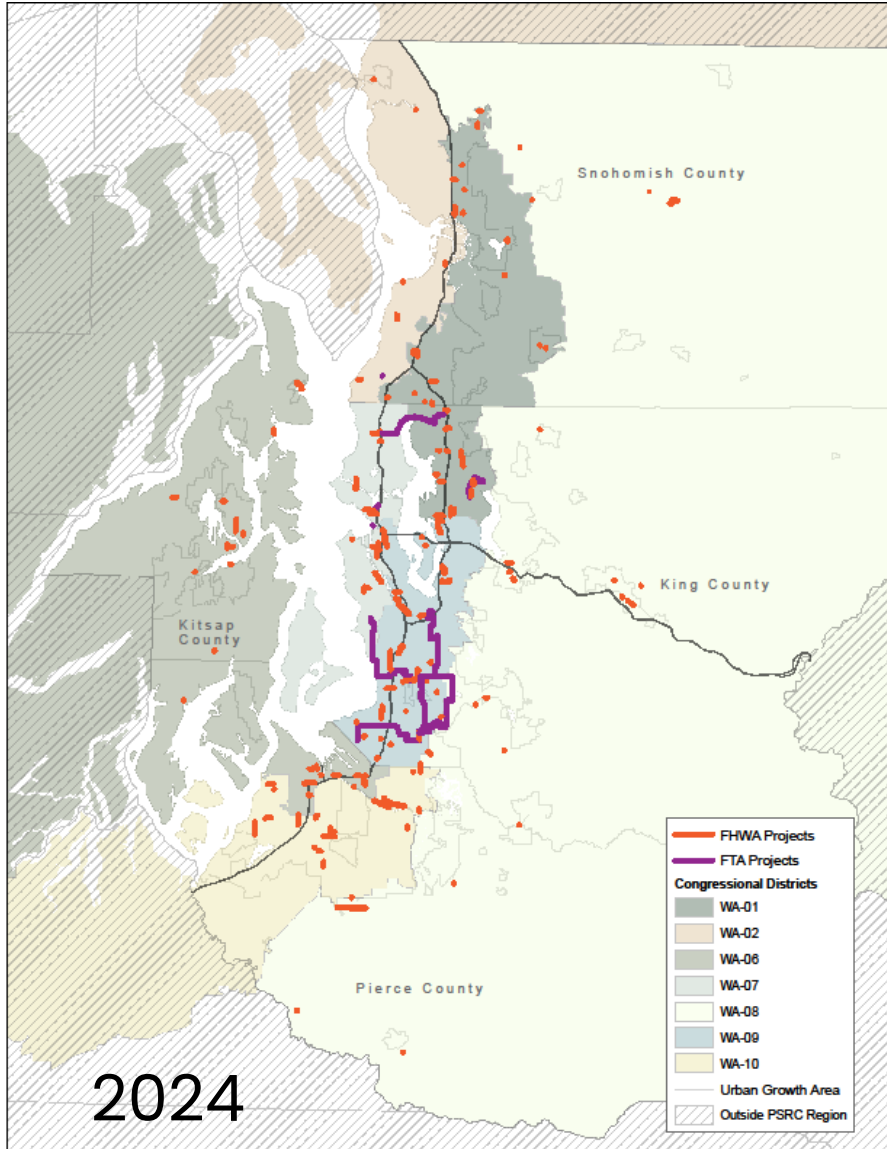
Federal Updates



- Federal Funding Pause Directive (rescinded)
- DOT Secretary Duffy confirmed [Order & Memorandum Summary](#)
- Agency Memos implementing executive orders
- Sanctuary Cities
- Continuing Resolution ends 3/14
- Surface Transportation Reauthorization



Federal Updates: PSRC Regional Impact



\$2.2 billion
in federal
funds for
projects
obligated
2024-2025



Federal Resources

Executive Board Update February 27, 2025

[Video: AWC/PSRC Federal Funding Update](#)

[Executive Order Summaries from Holland & Knight](#)

[PSRC News Post](#)



2025 State Legislative Session

- 2,090 bills introduced
- Policy cut off Feb 21
- Fiscal cut off Feb 28
- Next revenue forecast
March 18



2025 Legislative Session Budget Outlook



- Operating budget deficit of \$12 billion
- Transportation budget deficit of \$8 billion, \$1.2 billion in FY 25–27
- Governor Ferguson gave most state agencies 6% budget reduction targets
- Lawsuits and tort claims
- New revenue being discussed by legislature

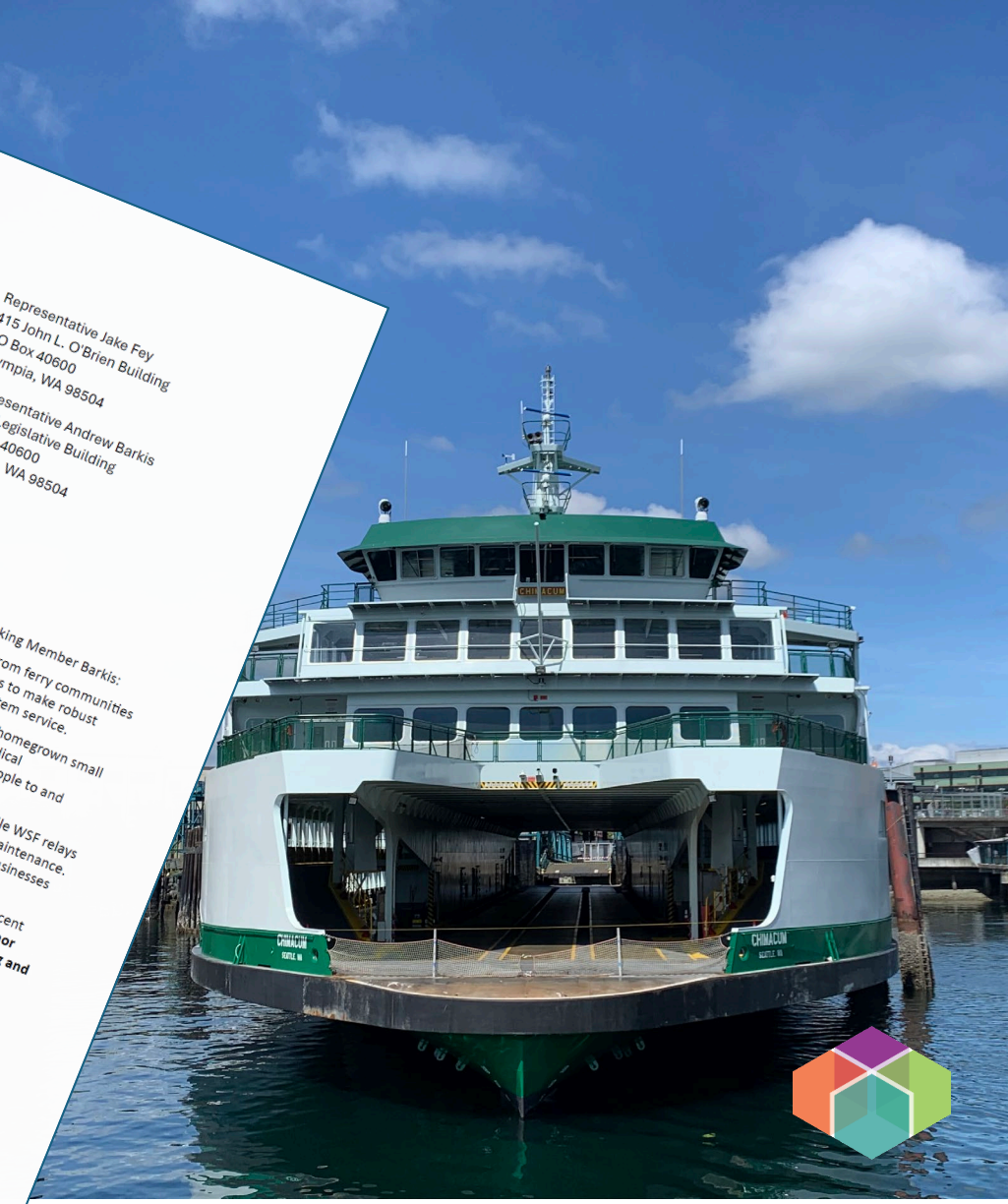
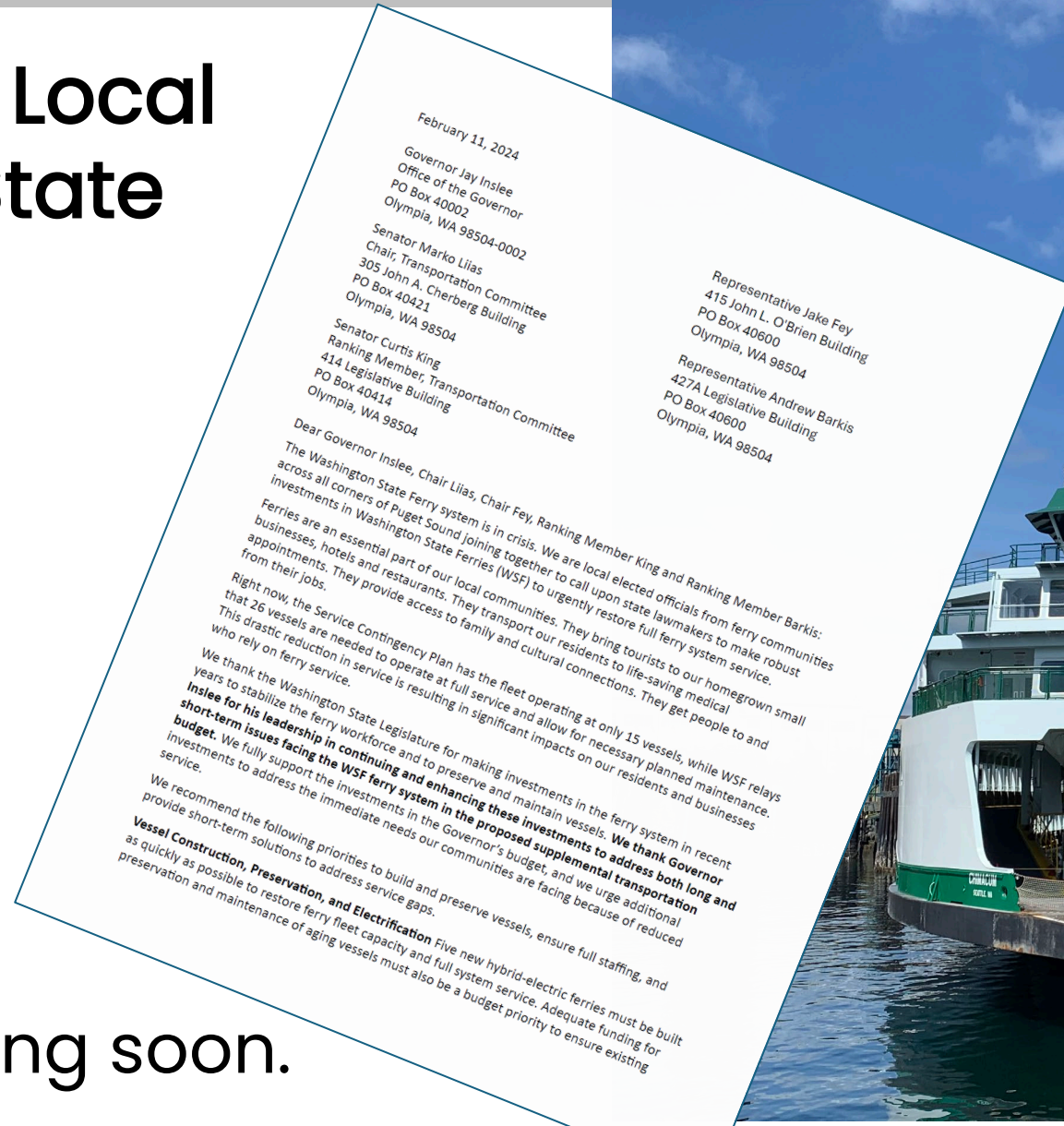
Washington State Ferries

Fund Our Ferries Local Elected Official State Sign-on Letter

Sign-on!

Next Meeting:
March 14, 10-11:30

Federal letter coming soon.



Road Usage Charge

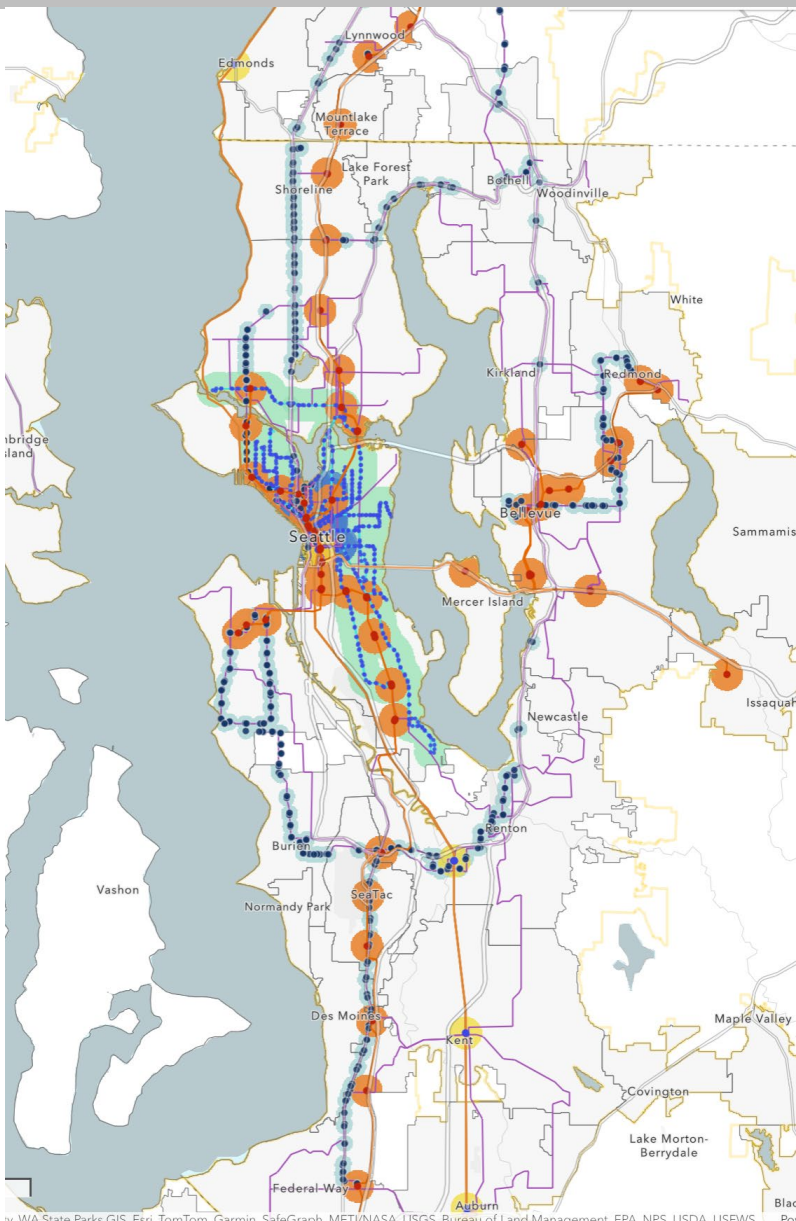


- [HB 1921 \(Fey\)](#) / [SB 5726 \(Ramos\)](#)
- Phased Approach
- 2.6 cents per mile, increased over time linked to fuel tax
- Odometer reporting
- Use restricted to maintenance and preservation protected by the 18th amendment
- 10% road usage Assessment to support alternative transportation

[PSRC News Post](#)



Housing Supply: Transit-Oriented Development



Promoting Transit Oriented Housing Development

[HB 1491](#) (Reed)

Creates density requirement in station areas

- 3.5 FAR w/in .5m of rail
- 2.5 FAR w/in .25m of BRT

Promoting Transit Oriented Development

[SB 5604](#) (Lias)

Allows jurisdictions to create MFTE program with 20-year tax exemption in station areas requiring 20% of units in building to be affordable for 50 years.



Housing Stability

Rent Stabilization

[HB 1217](#) (Alvarado) / [SB 5222](#) (Trudeau)

Limits rent increases to no more than 7 percent per year during

- Requires 6 months' notice for a rent increase of 3 percent or more
- Establishes fees count as rent for the purposes of calculating an increase
- Limits move-in fees to the equivalent of one month's rent or less
- Limits late fees to no more than 1.5% of the monthly rent



Housing Supply: Parking Requirements

[HB 1299](#) (Peterson) / [SB 5184](#) (Bateman)

Minimum Parking Requirements

Prohibits cities and counties from requiring:

- More than 0.5 parking space per residential unit
- More than 1 parking space per 1000 feet of commercial space
- Eliminates minimum parking requirements for several building types including affordable & senior housing and homes < 1200 sq ft



Housing Research Center

- Sign on Letter
- Budget ask:
\$250,000 FY 2025
and \$750,000 FY
2026 and each
subsequent year
- One-pager





Thank You!

Robin Koskey

Director, Government Relations and Communications

Rkoskey@psrc.org



Puget Sound Regional Council