

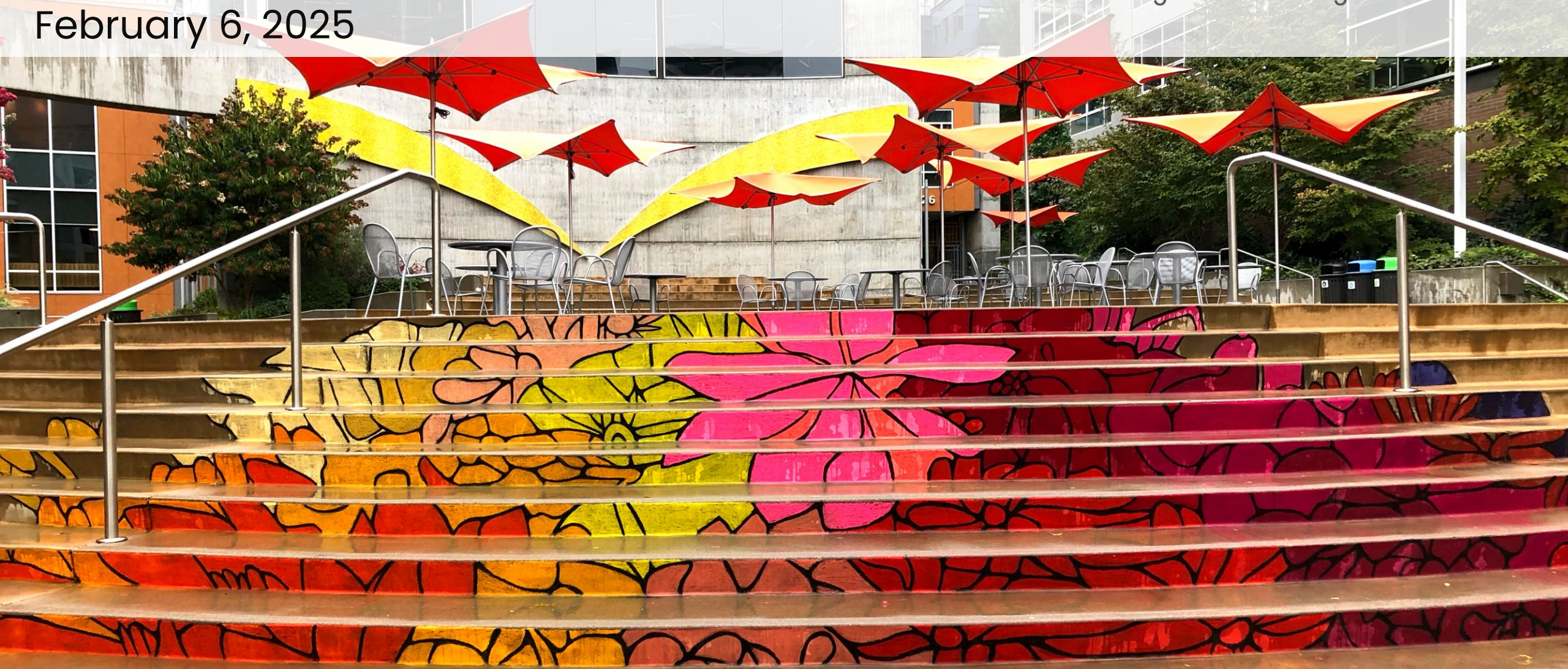
# Regional Transit-Oriented Development Committee Work Plan & Committee Appointments

Growth Management Policy Board

February 6, 2025



Puget Sound Regional Council



# About the Regional TOD Committee

- Continues the work in VISION 2050 to support equitable transit-oriented development (TOD) and 65% of future population growth in proximity to transit
- Works with PSRC staff on VISION 2050 implementation efforts
- Seeks to engage, educate, and mobilize stakeholders to advance transit-oriented development
- Advises the Growth Management Policy Board, meets quarterly
- Originally launched in 2014 and rechartered in 2021

# 2024 Committee Work

## **Provide direction and support for regional planning work:**

- TOD bill analysis
- Connecting People to Transit
- Regional Safety Action Plan
- Regional Transportation Plan development

## **Learn from others about promising practices:**

- Presentations on economic opportunity and equitable development near transit, comprehensive plan updates, and statewide TOD policy
- Standing “Committee Round Robin” agenda item

## **Convene TOD stakeholders for information sharing and networking:**

- Two-part equitable TOD webinar series focused on commercial displacement and building connected communities
- Quarterly Talkin’ TOD newsletter



# 2024 Building Equitable Transit Communities Webinar Series

Two-part webinar to share best practices for building and sustaining equitable transit communities

## **September 27: Transit-Oriented Communities**

- Place and community-building
- Parks and the public realm
- Arts and culture
- Neighborhood activation

## **November 1: Preventing Commercial Displacement Near Transit**

- Research and best practices to address commercial displacement

**Learn More:** <https://www.psrc.org/our-work/toolbox>



# 2025 Meeting Themes

## March: Investing in TOD

- Legislative Session + TOD Bill
- Regional Centers
- Regional Transportation Plan

## June: Evaluating Opportunities for TOD

- Legislative Session
- Statewide TOD Study
- Displacement Research

## September: Connecting People to Transit

- Regional Transportation Plan
- Transit Access

## December: Growth Near Transit

- Regional Centers
- Regional Transportation Plan

*Talkin' TOD newsletter: Quarterly between meetings*



# TOD Committee Feedback

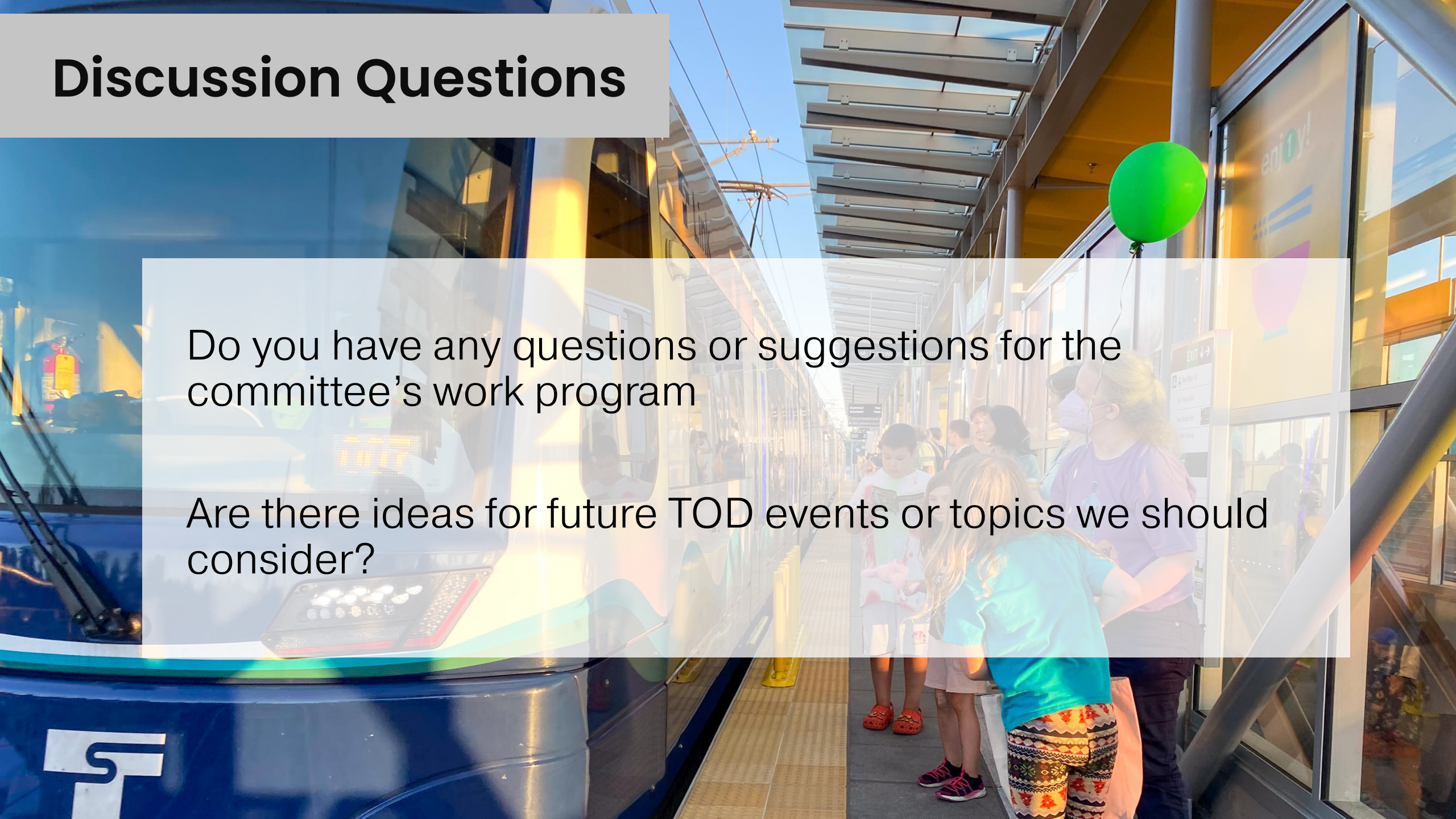
- Support for the committee direction
- Particular interest in:
  - Bus rapid transit + displacement pressure
  - Commercial uses + TOD
  - Incentivizing initial development / pilot projects
  - Comprehensive plan implementation



# Discussion Questions

Do you have any questions or suggestions for the committee's work program

Are there ideas for future TOD events or topics we should consider?



# 2025-28 Membership Roster





# TOD Committee Membership

- Per 2021 charter, committee updates membership every three years
- Applications open from December 5, 2024 – January 8, 2025
- Current members could reapply for a committee seat
- Evaluated applications by response to questions, balancing mix of jurisdictions, modes of HCT



# Recommended Roster

## Membership by application:

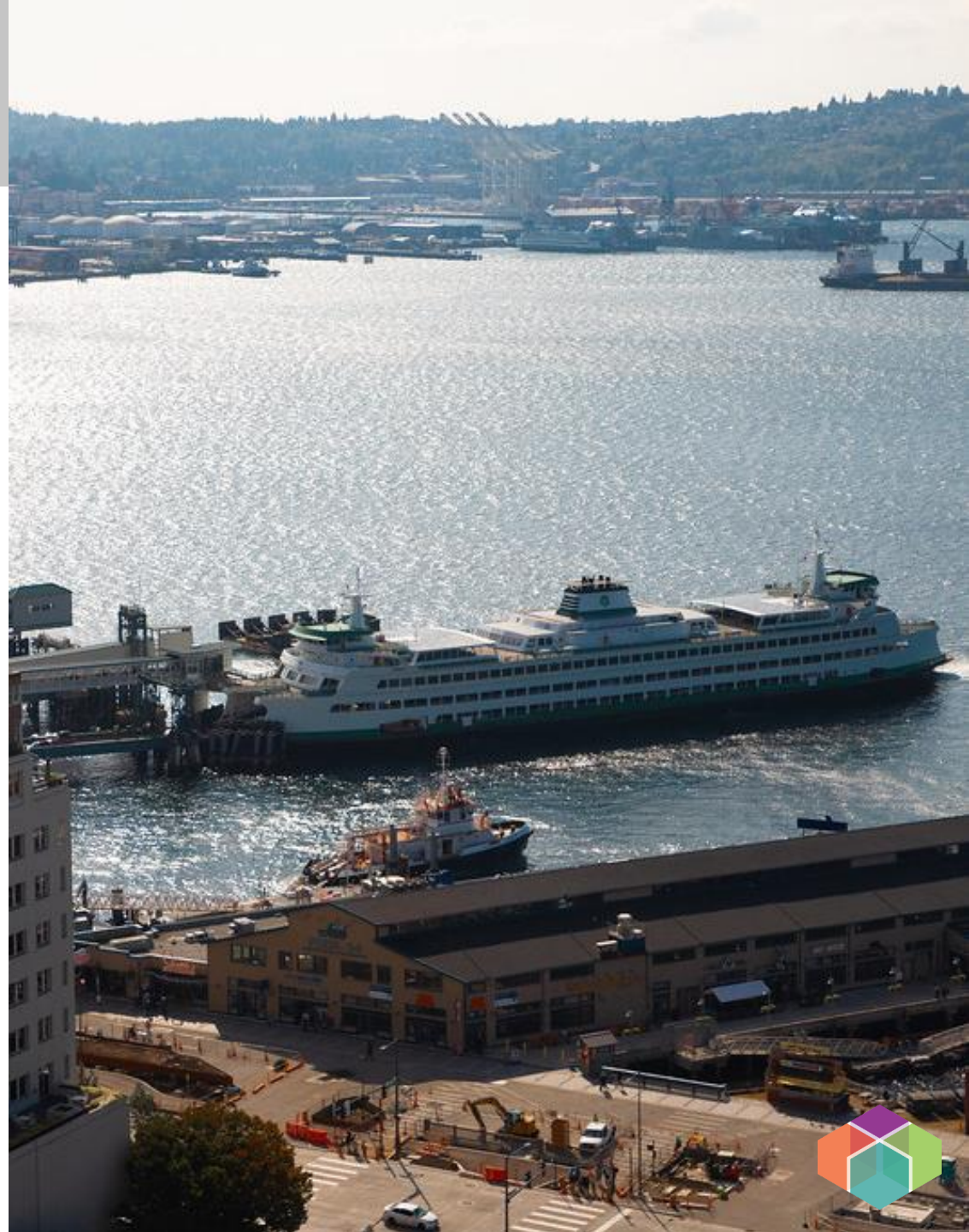
- Staff from PSRC Member Cities and Counties (7 seats)
- Developers and Real Estate Professionals (3 seats)
- Housing Organizations (3 seats)
- Community, Equity, or Environment Organizations (2 seats)

# TOD Committee Membership

## Other Appointed Seats:

- Sound Transit
- WSDOT
- Local Transit Agency  
(Transportation Operators  
Committee appoints 2 seats)
- Growth Management Policy  
Board (appoints 2 seats)

PSRC requested updates to  
appointments



# Proposed Regional TOD Committee Membership

WSDOT  
Sound Transit  
Transit Agencies (*Appointed by TOC*)  
Master Builders Association of King & Snohomish  
Housing Development Consortium  
Cairncross & Hemplemann  
Main Street Equity Partners  
MAKERS  
Everett Station District Alliance / Puget Sound LISC  
Tacoma-Pierce / Snohomish Health Departments

South King Housing & Homelessness Partners  
Schemata Workshop  
Housing Authority of Snohomish County  
City of Bellevue  
City of Bothell  
City of Fife  
City of Kent  
City of Lynnwood  
City of SeaTac  
Kitsap County



# Recommended Action

Approve the 2025-28 Regional TOD Committee membership roster as shown in Attachment A

Liz Underwood-Bultmann, AICP

Principal Planner

[LUnderwood-Bultmann@psrc.org](mailto:LUnderwood-Bultmann@psrc.org)

Thank you.



# Proposed Regional TOD Committee Membership

Seat	Member
WSDOT	WSDOT
Sound Transit	Sound Transit
Local Transit Agency (2)	To be confirmed by Transportation Operators Committee
Local Transit Agency (2)	
GMPB (2)	Master Builders of King & Snohomish Counties
GMPB (2)	Housing Development Consortium
Developers and Real Estate (3)	Cairncross & Hemplemann
Developers and Real Estate (3)	Main Street Equity Partners
Developers and Real Estate (3)	MAKERS
Housing Organizations (3)	South King Housing & Homelessness Partners
Housing Organizations (3)	Schemata Workshop
Housing Organizations (3)	Housing Authority of Snohomish County

# Proposed Regional TOD Committee Membership

Seat	Member
Community, Equity, Environment (2)	Everett Station District Alliance / Puget Sound LISC
Community, Equity, Environment (2)	Tacoma-Pierce / Snohomish Health Departments
City/County (7)	City of Bellevue
City/County (7)	City of Bothell
City/County (7)	City of Fife
City/County (7)	City of Kent
City/County (7)	City of Lynnwood
City/County (7)	City of SeaTac
City/County (7)	Kitsap County

