

Regional Transportation Plan & Coordinated Mobility Plan Engagement

CMAC • January 15, 2025



Puget Sound Regional Council



We are leaders in the region to realize equity for all. Diversity, racial equity and inclusion are integrated into how we carry out all our work.

psrc.org/equity

Today

- **Overview of RTP Engagement**
- **Coordinated Mobility Plan Engagement**
- **Key Mobility Needs**
- **Peer Review**
- **Next Steps**



Overview of RTP Engagement

RTP online engagement hub will be released to the public in spring 2025.

PSRC is planning to hold a series of public meetings across counties.

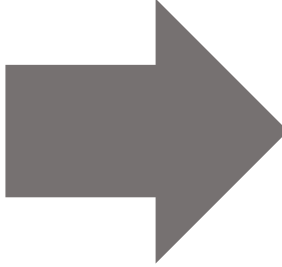
Focus groups and stakeholder interviews will be conducted. Target audiences will include specialized transportation providers and priority populations.



Coordinated Mobility Plan Engagement

Phase I (Fall 2024–Spring 2025)

Phase II (Summer–Fall 2025)



Review feedback and data to assess the **mobility needs** of priority populations.

Develop prioritized strategies to address the needs.



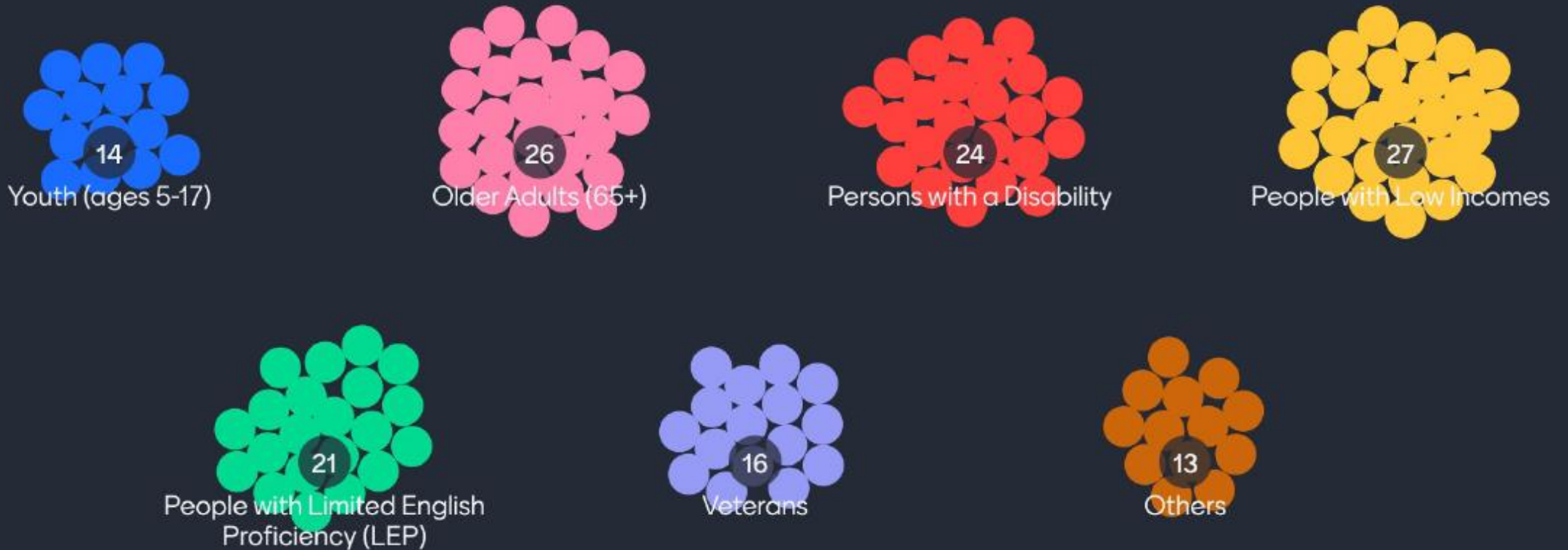
Key Mobility Needs

PSRC engaged King County and Pierce County Mobility Coalitions to-date. SNOTRAC engagement is scheduled for January 31.

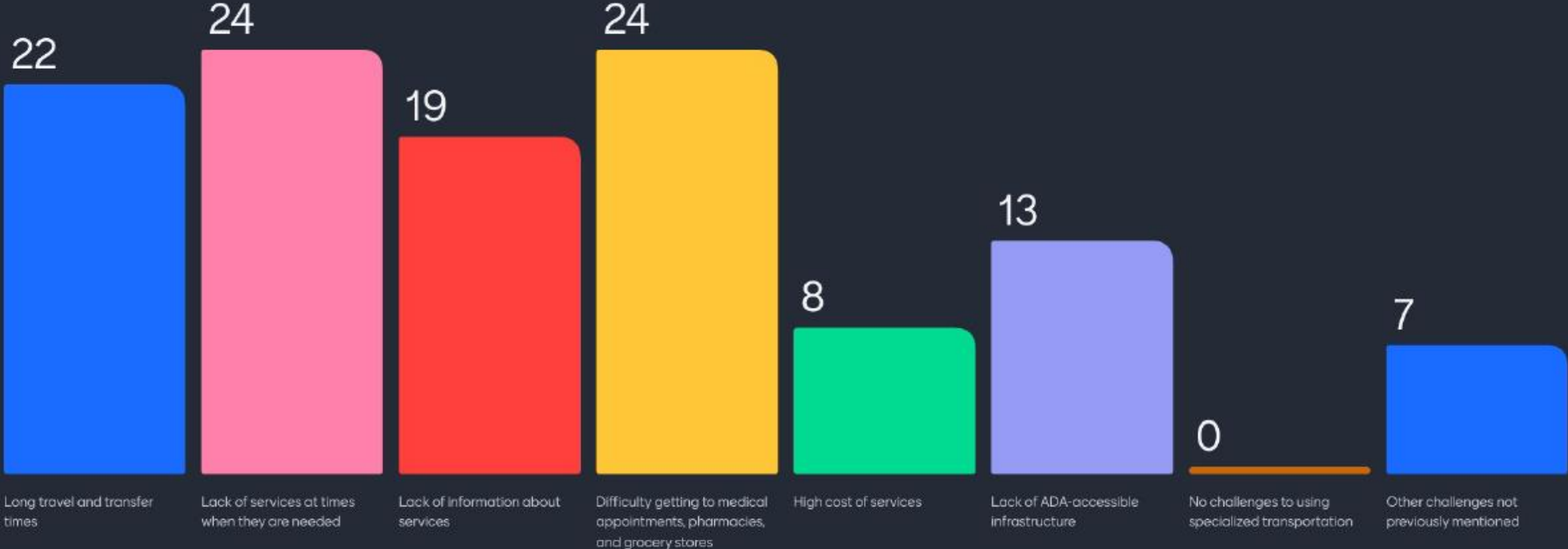
Highlights:

- Lack of services at times when needed
- Long travel and transfer times
- Difficulty getting to/from medical appointments, pharmacies, and grocery stores
- Lack of ADA-accessible infrastructure
- Limited services in areas outside of transit district boundaries, especially in rural areas
- Difficulty in cross-county travel

Which of the following groups are you representing today?



Do you or the groups you represent experience any of the following challenges to using specialized transportation?



Peer Review

Key Findings:

- The most common engagement strategies were surveys, interviews, focus groups, and workshops
- Peer regions conducted surveys to ask:
 - Personal transportation usage
 - Possible solutions to improve existing services

Reviewed 9 peer regions' Coordinated Plans:

- Atlanta (ARC)
- Boston Region
- Bay Area
- Chicago (CMAP)
- Denver (DRCOG)
- Delaware Valley (DVRPC)
- Oregon (Metro)
- San Diego (SANDAG)
- South CA (SCAG)

Peer Review – Highlights

➤ **Boston Region MPO**

- Useful **graphics** communicating survey results and analysis
- Extensive list of **stakeholder groups**

➤ **Delaware Valley MPO (DVRPC)**

Workshops – an interactive balance between education and feedback

➤ **San Diego MPO (SANDAG)**

- **Working groups and task forces** of stakeholders provide regular input
- **Translators and interpreters** provided



Example: Boston Region MPO Data Graphics

FIGURE ES-2
RANKING OF STRATEGIES TO IMPROVE HUMAN SERVICES TRANSPORTATION

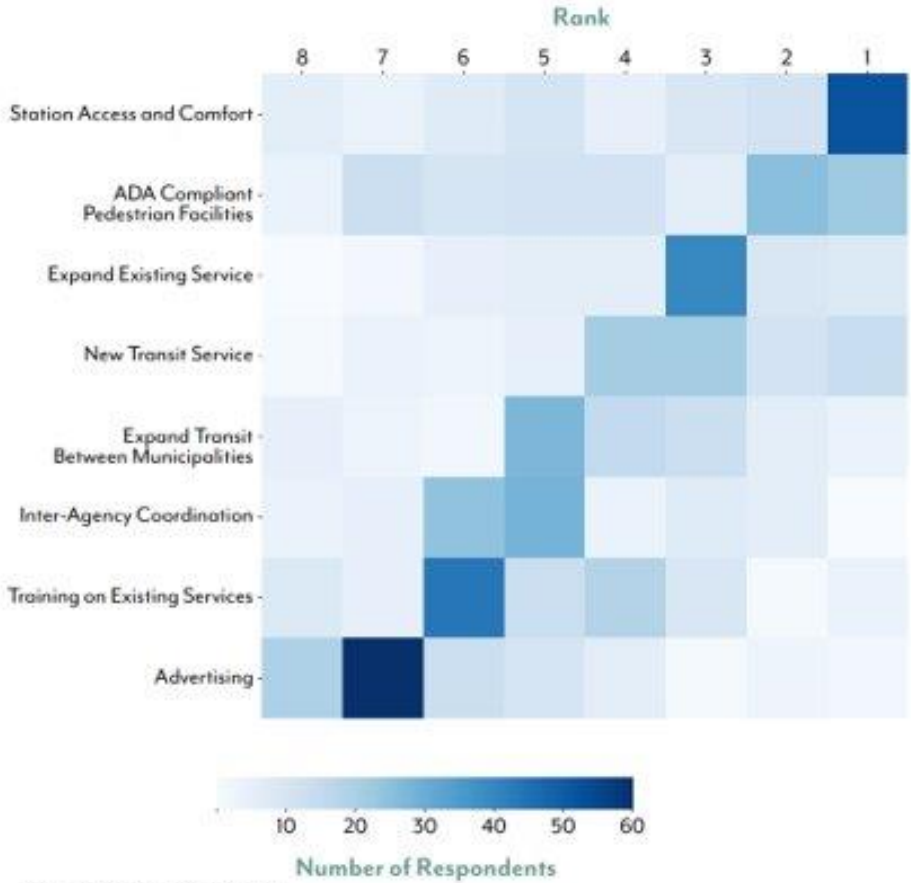
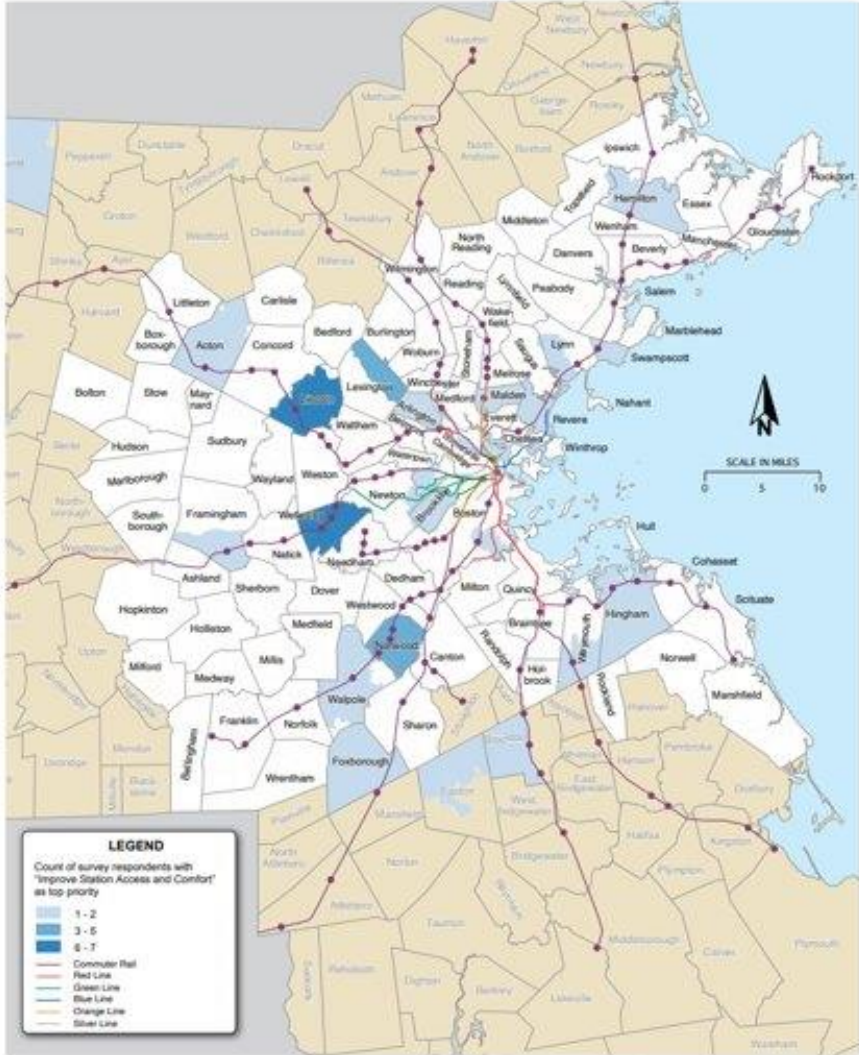


FIGURE 4-7
ZIP CODE OF RESPONDENTS WITH "IMPROVE ACCESS AND COMFORT" AS TOP PRIORITY



Next Steps

Winter-Spring 2025: Phase 1 engagement

By Summer 2025: Phase 2 engagement continues

Winter 2025-Early 2026: Draft plan release for comment

Spring 2026: Coordinated Mobility Plan adopted as part of 2026-2050 RTP





Thank You!

Jean Kim
Senior Planner
Jkim@psrc.org



Puget Sound Regional Council