

Regional MOD Inventory – Micromobility

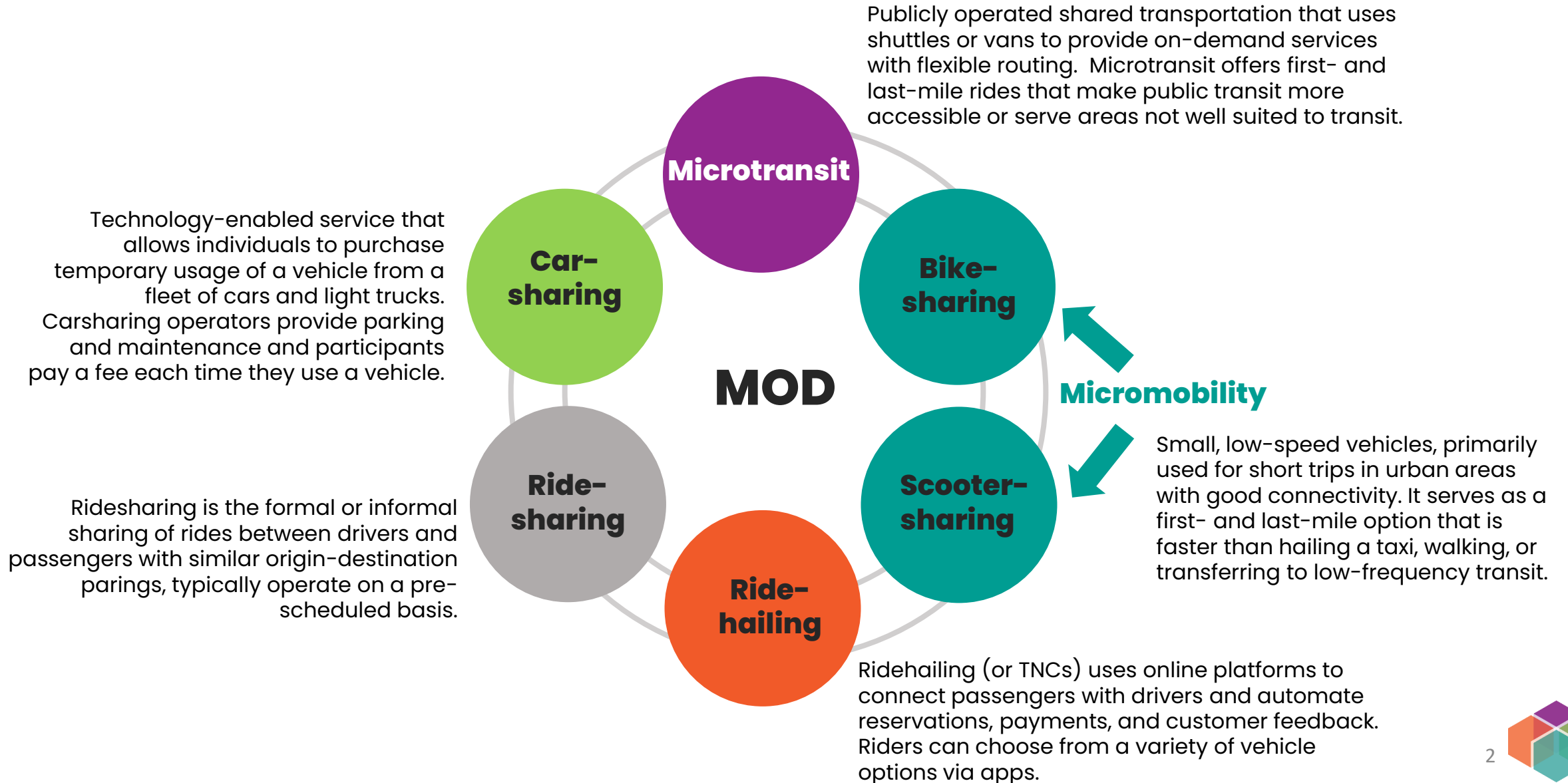
BPAC • January 14, 2025



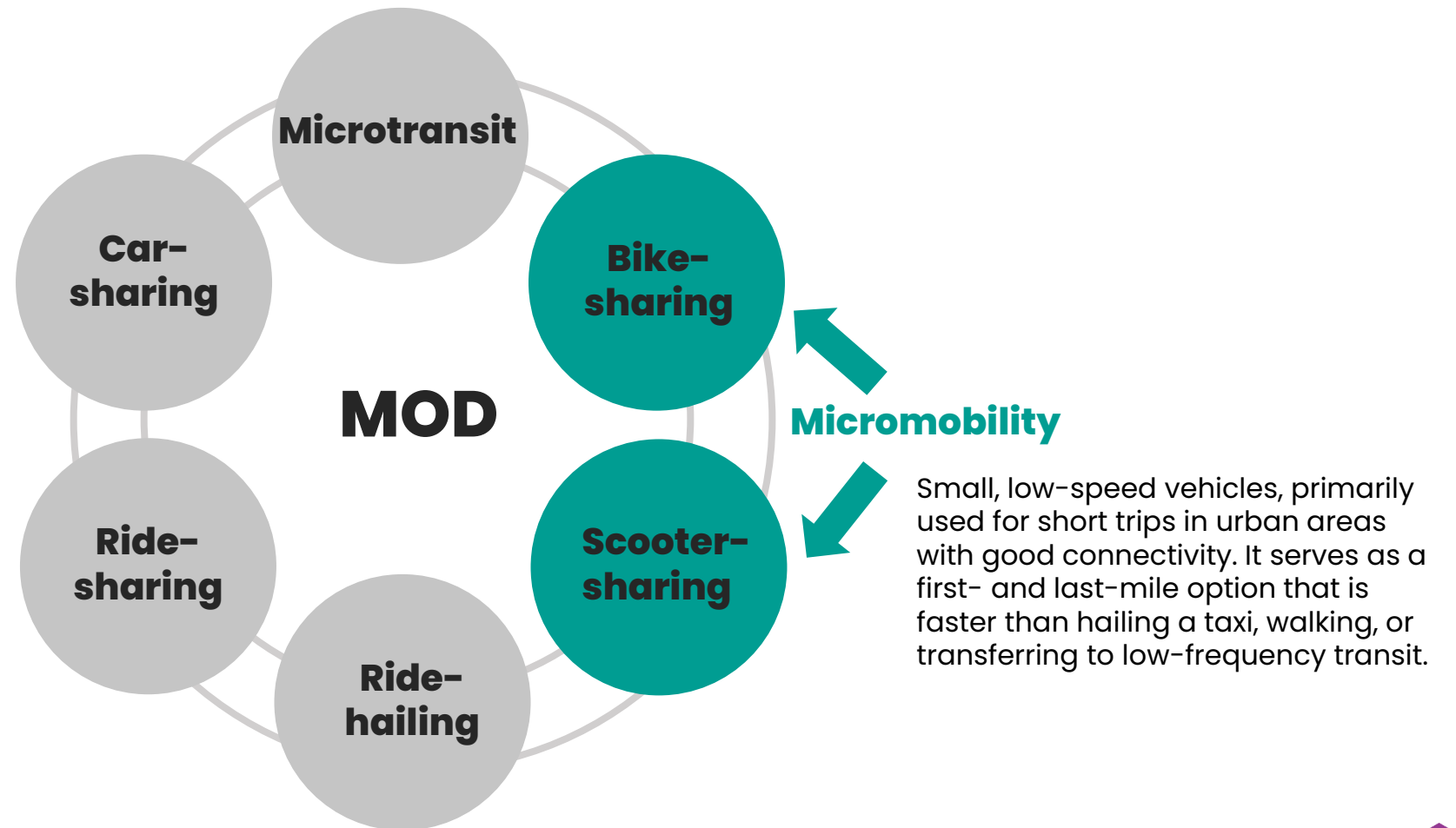
We are leaders in the region to realize equity for all. Diversity, racial equity and inclusion are integrated into how we carry out all our work.

psrc.org/equity

Mobility on Demand encompasses a wide range of modes.



Micromobility



Peer Review

Key Findings:

- Most regions were at the **beginning stages** of MOD partnerships & research.
- RTPs generally **provided an overview of MOD** modes and the pros & cons of each.
- The level of detail varied greatly between the regions, especially regarding needs/ gaps analyses & regional trend data.

Reviewed six peer regions addressed MOD in RTPs:

- Atlanta (ARC)
- Boston Region
- Denver (DRCOG)
- Delaware Valley (DVRPC)
- Oregon (Metro)
- San Diego (SANDAG)

MOD trends at the national level

- MOD usage/ridership has been **steadily rebounding from COVID**, where all modes experienced a significant decrease.
- The number of MOD programs **continues to expand** throughout the country, with ridership projected to continue to grow.
- Trend towards Mobility as a Service (MaaS), where multiple forms of transportation are integrated into a single platform.

Existing Conditions—MOD Inventory Survey

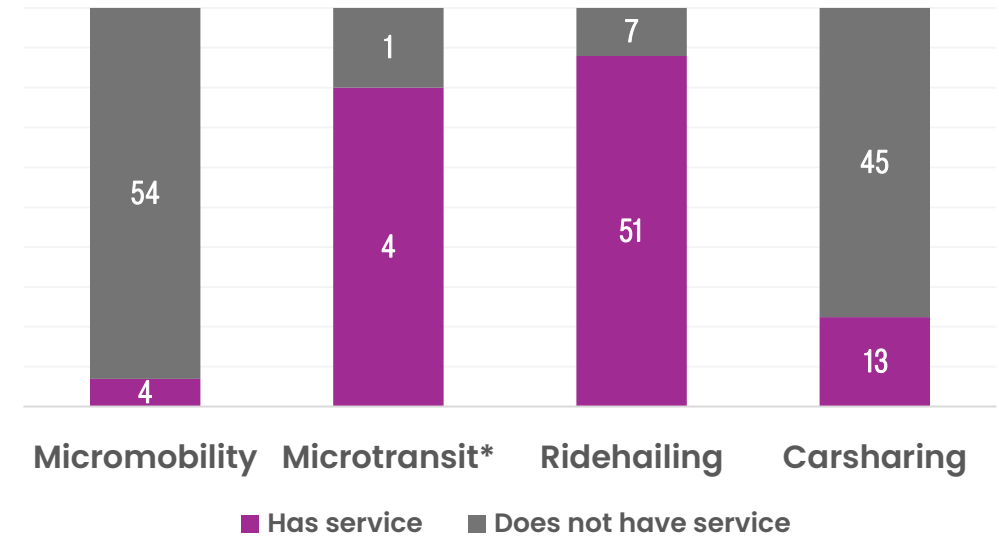
An inventory survey was conducted in the spring of 2024.

- **53 jurisdictions and 5 transit agencies submitted responses.**

The survey asked about key elements of MOD including:

- Availability and coverage of MOD programs
- Usage/ridership by MOD category
- Roles of jurisdictions/agencies
- Program cost

Mobility On Demand Services by Agency



Micromobility

Four responded that their cities had micromobility programs in 2023:

- Bothell (scooter-share)
- Everett (scooter-share)
- Redmond (bike-share & scooter-share)
- Seattle (bike-share & scooter-share)

All jurisdictions above do not directly provide the service but are involved in a different capacity.

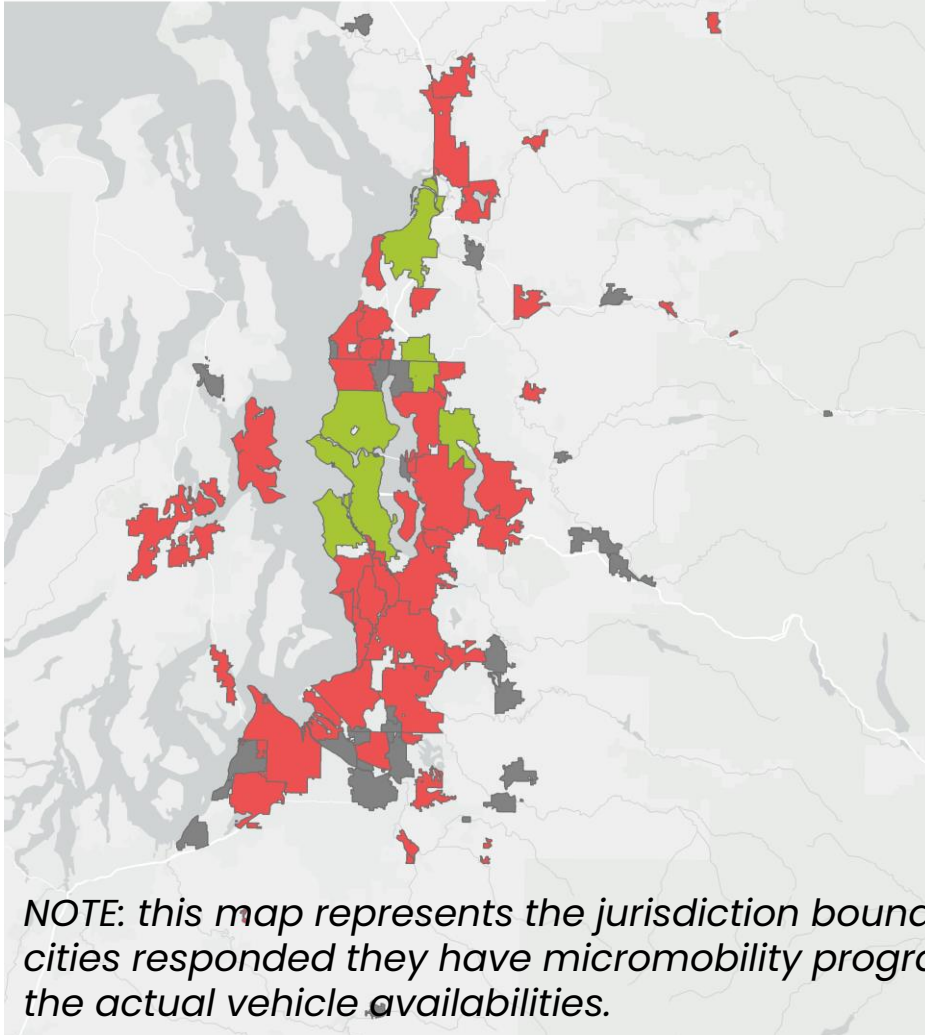
Examples: Bird, Lime, Veo



Micromobility Coverage (2023)

Micromobility Services in PSRC Region

- Yes
- No
- No Response



Total ridership of micromobility in 2023:
4,949,000 rides (higher share of scooter rides)

The average time traveled via micromobility
ranged between **8 to 12 minutes**.

The average distance traveled ranged between
0.7 to 1.5 miles.

Seattle set a **one-day ridership record of nearly 32,000 trips** on Saturday, July 22.

NOTE: this map represents the jurisdiction boundaries of cities responded they have micromobility programs, not the actual vehicle availabilities.

Microtransit

Four transit agencies responded that they operate microtransit (as of 2023):

- Community Transit (Zip Alderwood)
- King County Metro (Metro Flex)
- Kitsap Transit (Rides for multiple locations)
- Pierce Transit (Runner)

ORCA cards, including various ORCA products like Lift, Youth, RRFP, allow transfer between microtransit and public.

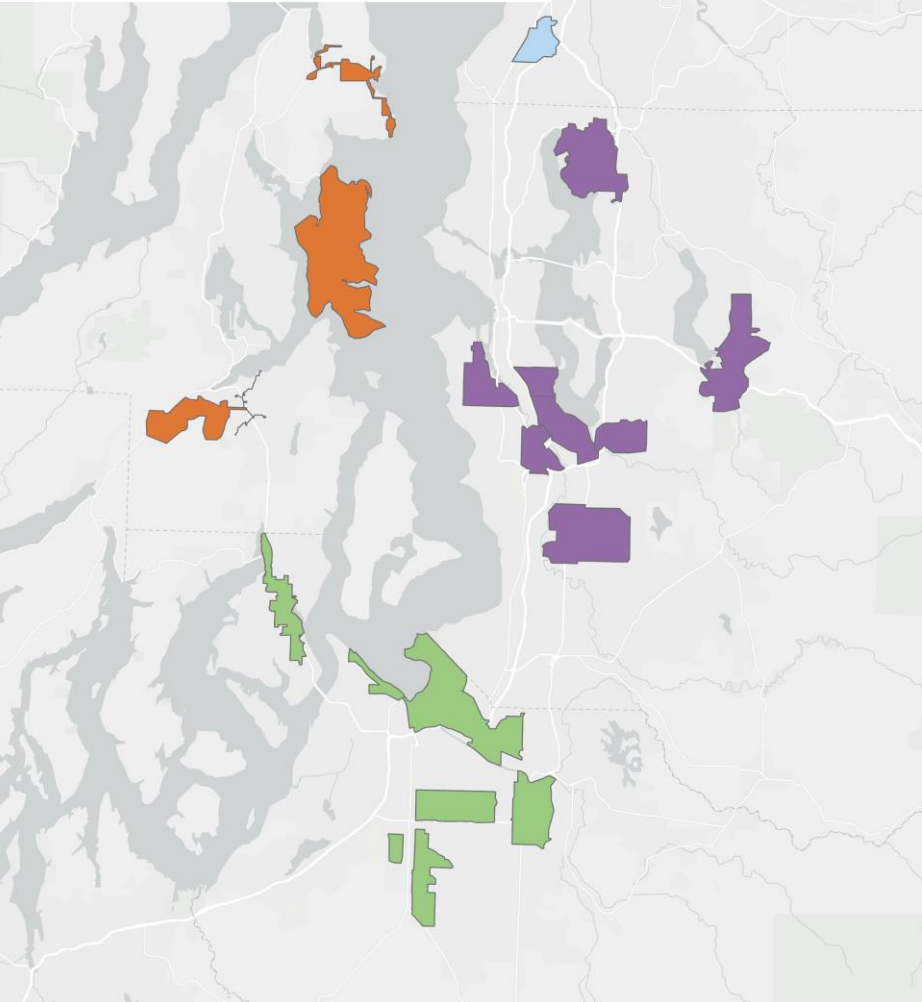
Wheelchair-accessible vans, curb-to-curb pick-up, and interpreter services are available.



Microtransit Coverage (2023)

Microtransit Service Areas (By Agency)

- Community Transit (Zip Alderwood)
- King County Metro (Metro Flex)
- Kitsap Transit (On-Demand Service)
- Pierce Transit (Runner)



Annual microtransit ridership (2023)

Community Transit	34,636
King County Metro	311,554
Kitsap Transit	24,406
Pierce Transit	13,685
TOTAL	384,281

City of Seattle, King County, WA State Parks GIS, Esri, TomTom, Garmin, SafeGraph, FAO, METI/NASA, USGS, Bureau of Land Management, EPA, NPS, USFWS

Ridehailing (Uber, Lyft)

Most of the jurisdictions (51 out of 58) responded that they have ride-hailing in their areas.

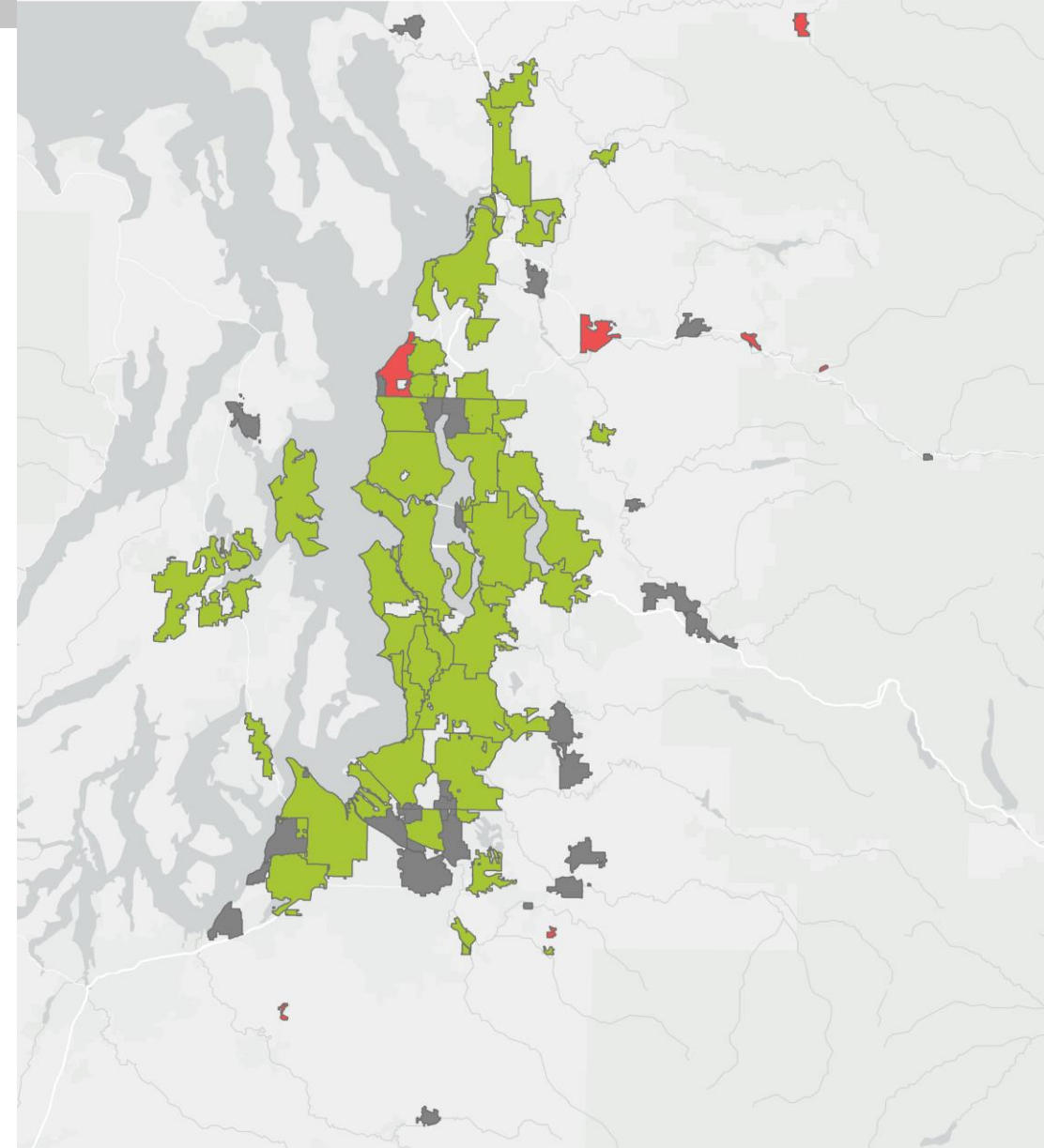
Jurisdictions identified that they don't have any involvement with ridehailing as the service is operated by private agencies.

Examples: Uber, Lyft



Ridehailing Services in PSRC Region

- Yes
- No
- No Response



Carsharing

Thirteen jurisdictions (about 22%) identified that they have car-sharing service.

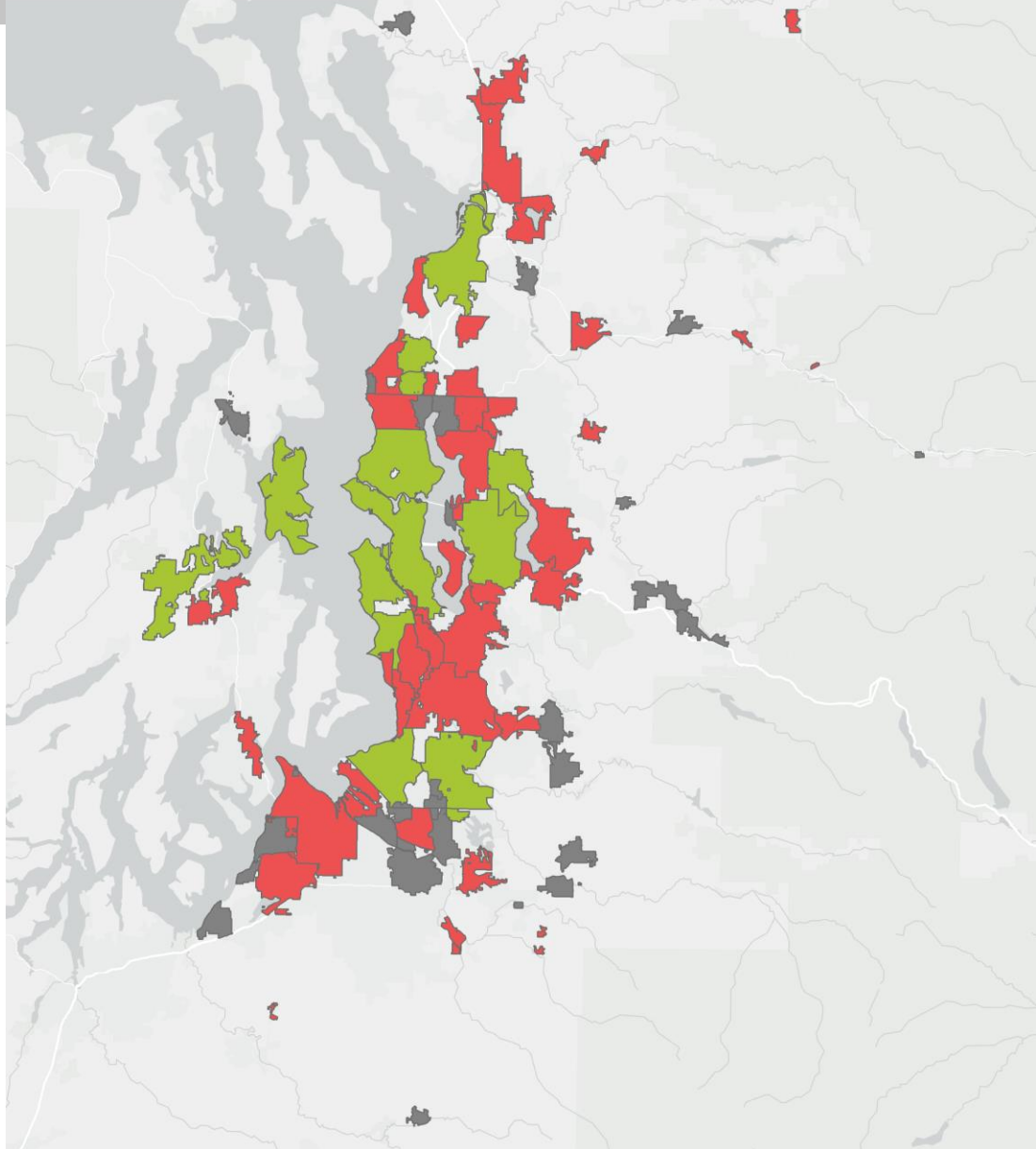
Most of the cities do not have any involvement in car-sharing.

Examples: Zip Car, Gig, Getaround, Kitsap Transit's SCOOT



Carsharing Services in PSRC Region

- Yes
- No
- No Response



King County, WA State Parks GIS, Esri, TomTom, Garmin, SafeGraph, FAO, METI/NASA, USGS, Bureau of Land Management, EPA, NPS, USFWS

Next Steps

Spring 2025: Trends & needs/gaps analysis

Summer 2025:

- Coordination with transit access work
- Future conditions

Periodic updates to committees and boards throughout the process.





Thank You!

Jean Kim
Senior Planner
jkim@psrc.org

Gary Simonson
Senior Planner
Gsimonson@psrc.org



Puget Sound Regional Council