

Regional Transportation Plan Development

Transportation Policy Board, January 9, 2025



Puget Sound Regional Council



We are leaders in the region to realize equity for all. Diversity, racial equity and inclusion are integrated into how we carry out all our work.

psrc.org/equity

Today's Presentation

- Overview of VISION 2050 and regional growth strategy
- Visualizing growth patterns and transit mobility investments
- Upcoming work on RTP Development



VISION 2050

- Adopted in October 2020
- Regional plan for 5.8 million people
- Guide for a healthy environment, thriving communities, and strong economy



Mobility

Jobs

Environment

Equity

Climate

Housing



Puget Sound Regional Council

OCTOBER



REGIONAL POLICY DIRECTION

VISION 2050

—Multicounty Planning Policies—
—Regional Growth Strategy—

DETAILED FUNCTIONAL IMPLEMENTATION PLANS

Regional Transportation Plan

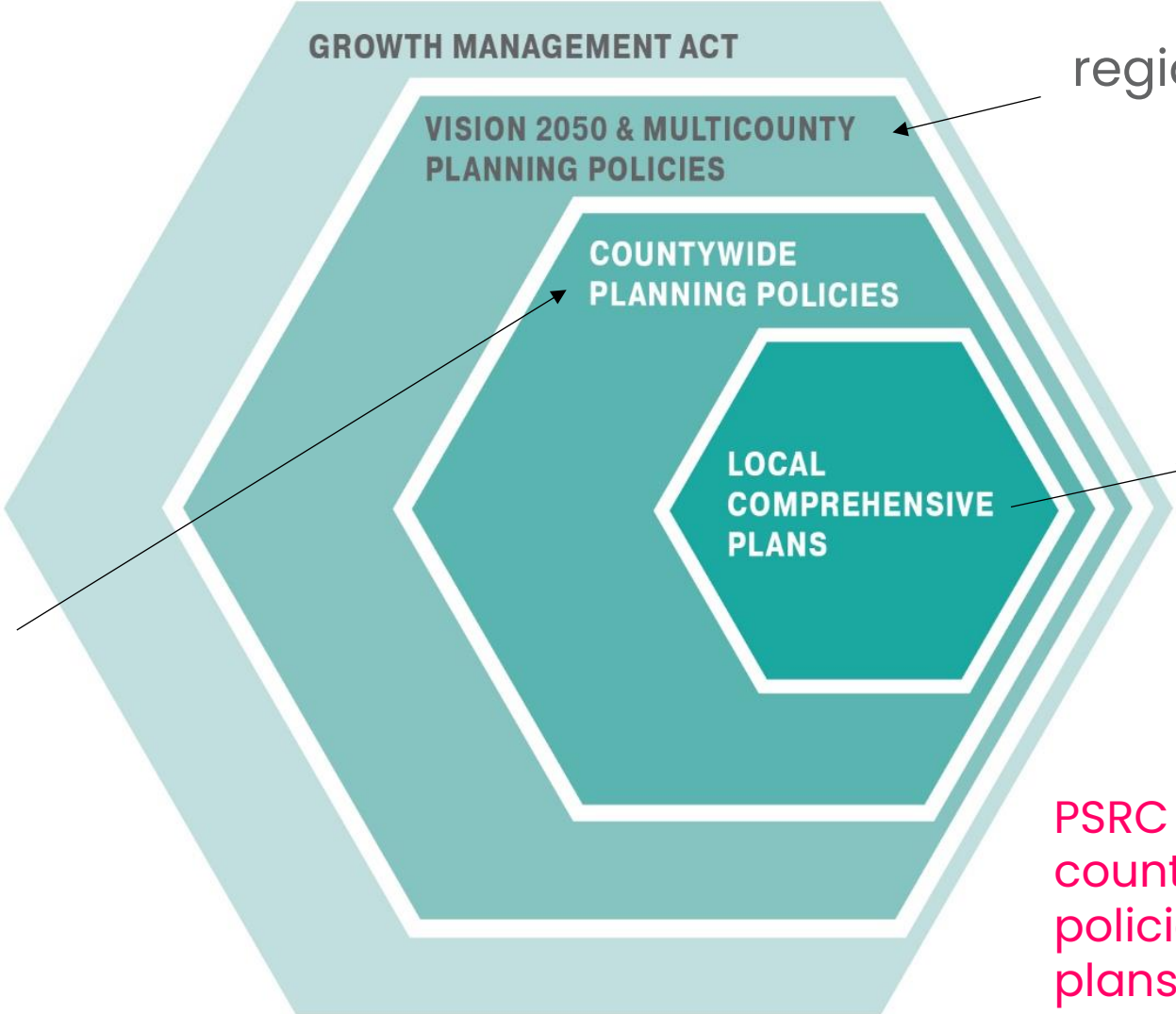
—Metropolitan Transportation Plan—

Regional Economic Strategy

—Comprehensive Economic Development Strategy—



Planning Framework



PSRC as the regional planning organization

Local jurisdictions prepare plans that must be consistent with multicounty & countywide policies

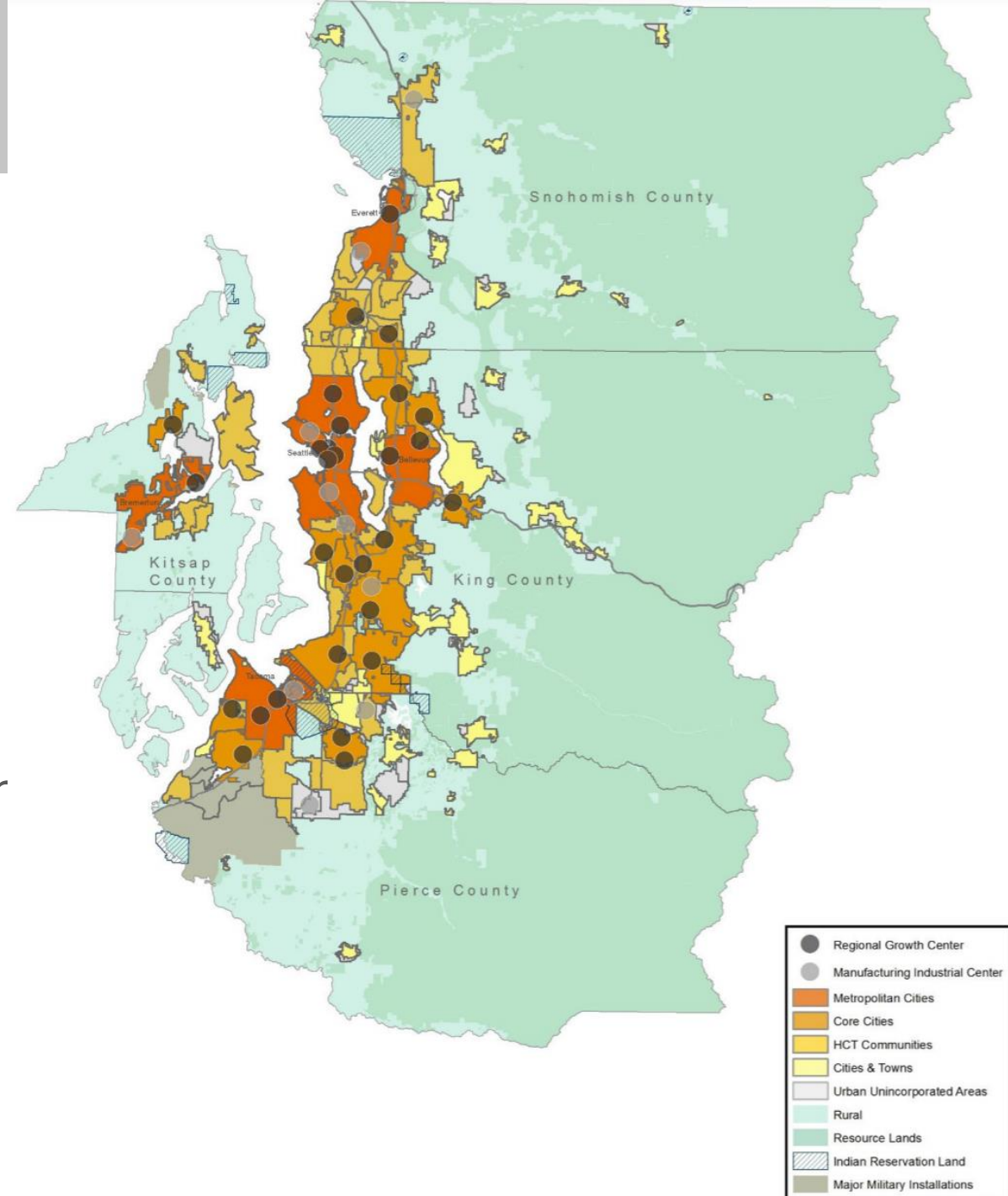
Counties and cities work together to set population & employment growth targets and policies to guide growth

PSRC certifies countywide planning policies and local plans



Regional Growth Strategy

- Types of geographies
- Most growth in Metro, Core, and High-Capacity Transit (HCT) Communities
- **65%** of region's population growth and **75%** of employment growth in regional growth centers & station areas
- Lower growth allocations in urban unincorporated and rural compared with long-term trends
- Better jobs-housing balance by shifting employment allocation from King County

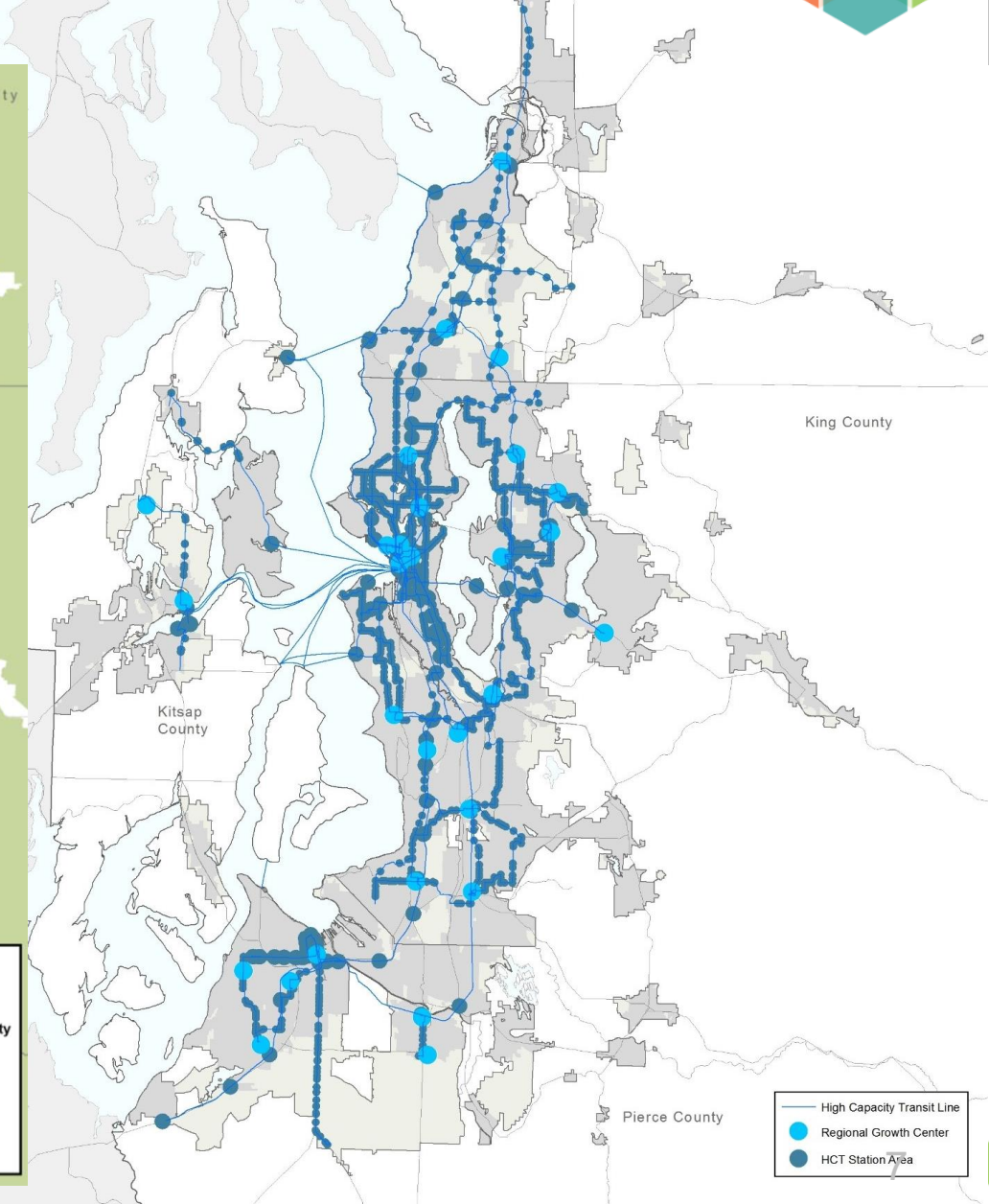
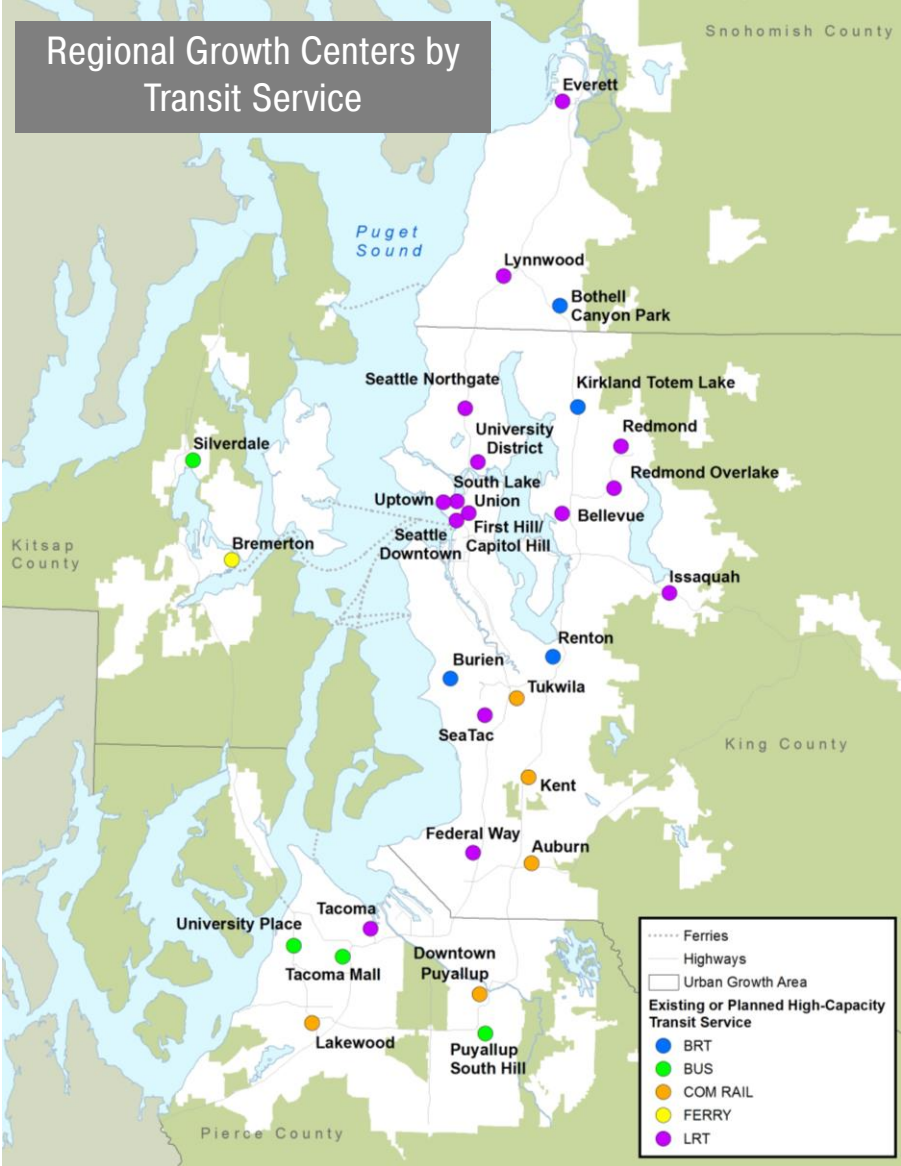


Centers and Transit Areas

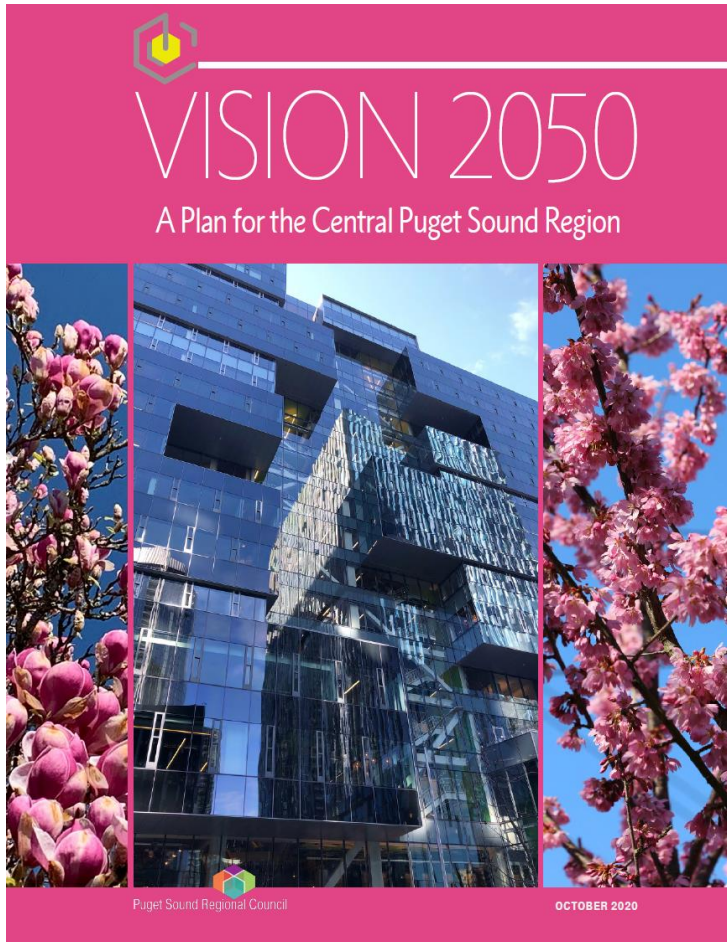


Goal for **65% of population growth** and **75% of employment growth** to occur in regional growth centers and station areas

- This is about 500,000 housing units



VISION 2050 also calls for



Increased **housing** choices and affordability



Sustaining a strong **economy**



Significantly reducing greenhouse gas **emissions**



A robust **transportation** system



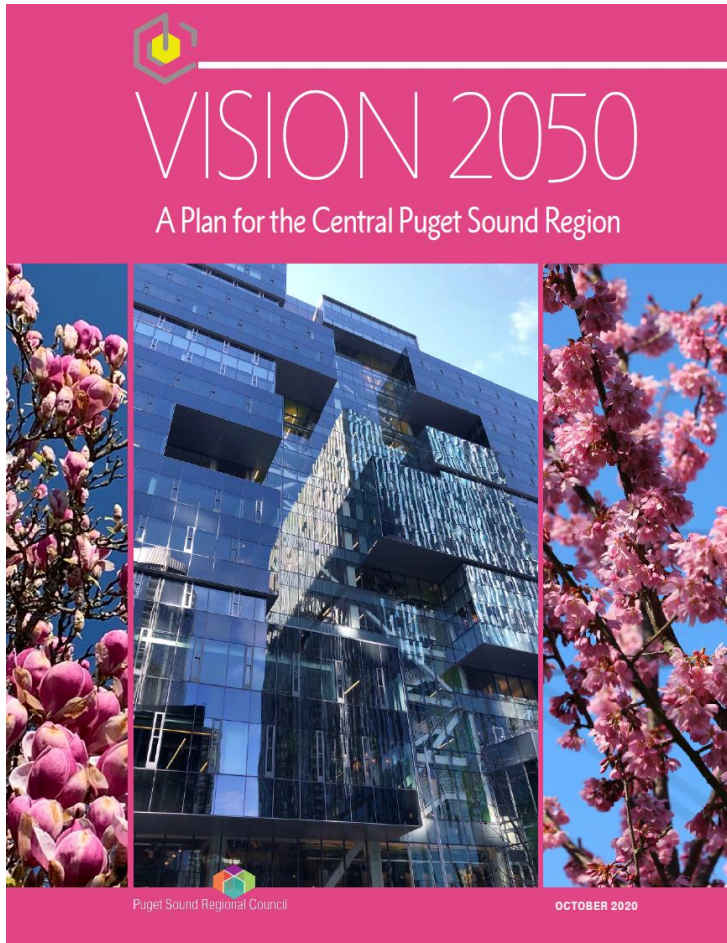
Restoring the health of **Puget Sound**



Acting **collaboratively** and support **local efforts**



VISION 2050 also calls for



Transportation policies...



- Safe, efficient, multimodal system for people and goods



- Maintenance and preservation
- Goal of zero deaths and serious injuries



- Support the Regional Growth Strategy



- Emphasize an integrated regional transit network



- Transportation technologies
- Promote human health
- Equity and affordability
- Widespread electrification

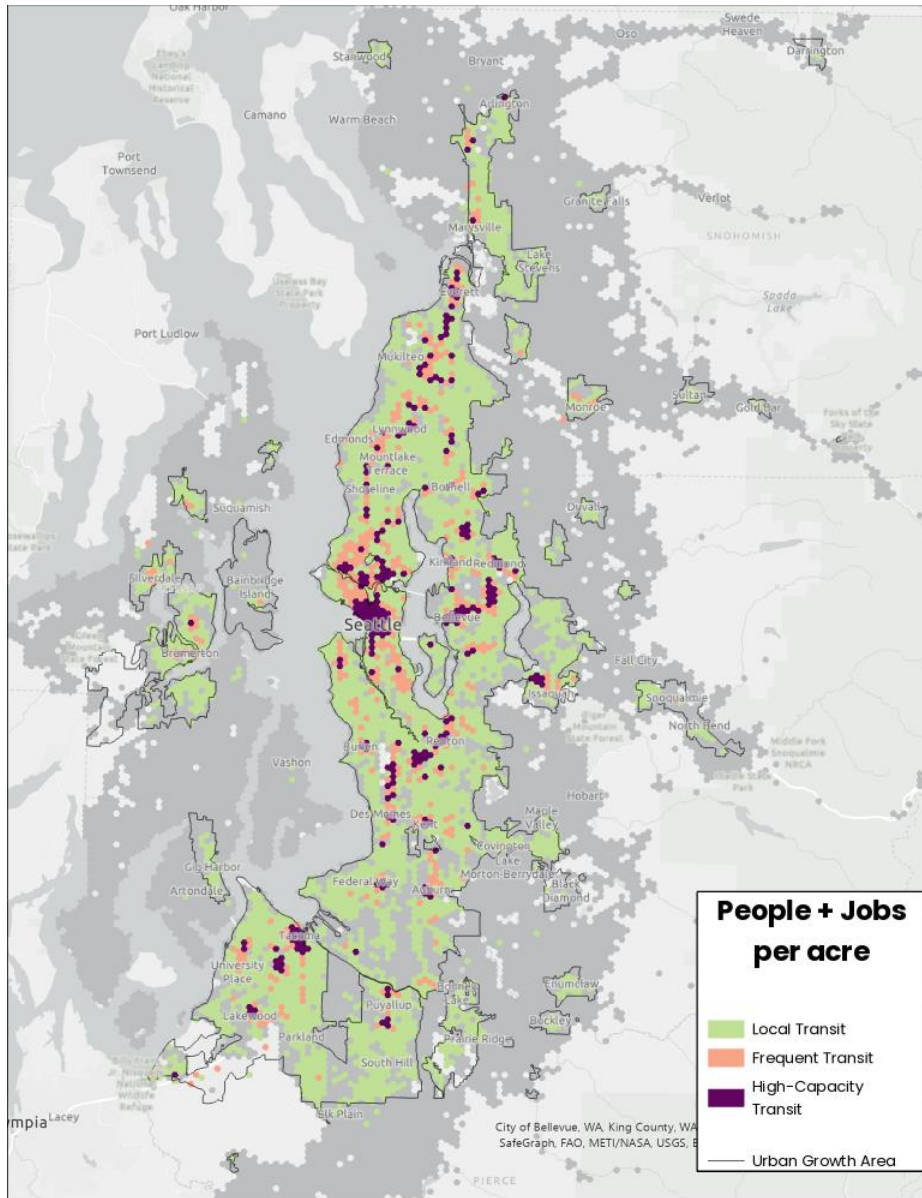




Visualizing Growth Patterns and Transit Investments



Where are the people & jobs?

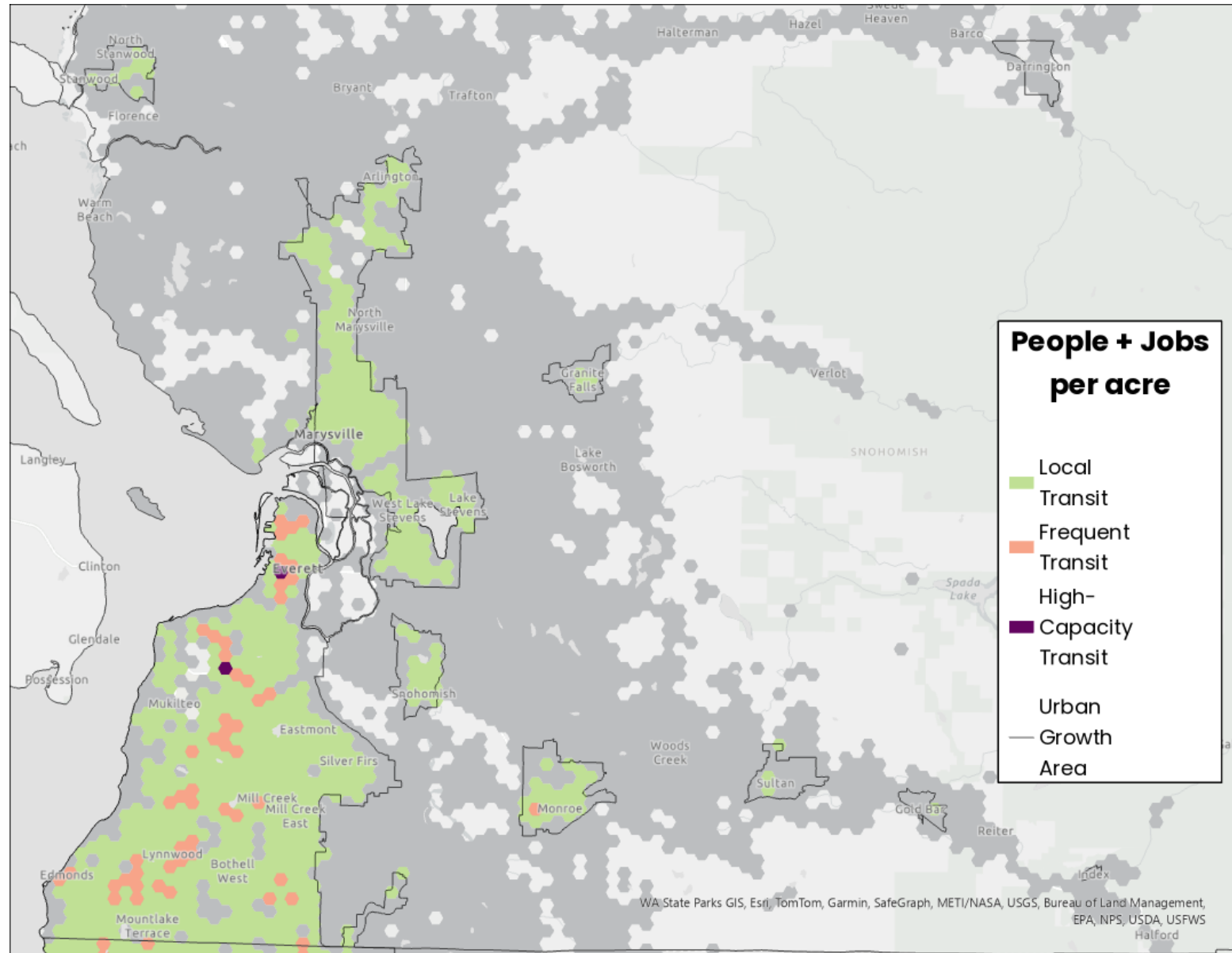


The Regional Transportation Plan will look at where people & jobs are today and planned for in 2050 to help identify places that are supportive of different levels of transit service. This data can be used in combination with transit networks to help identify any possible gaps in service type.



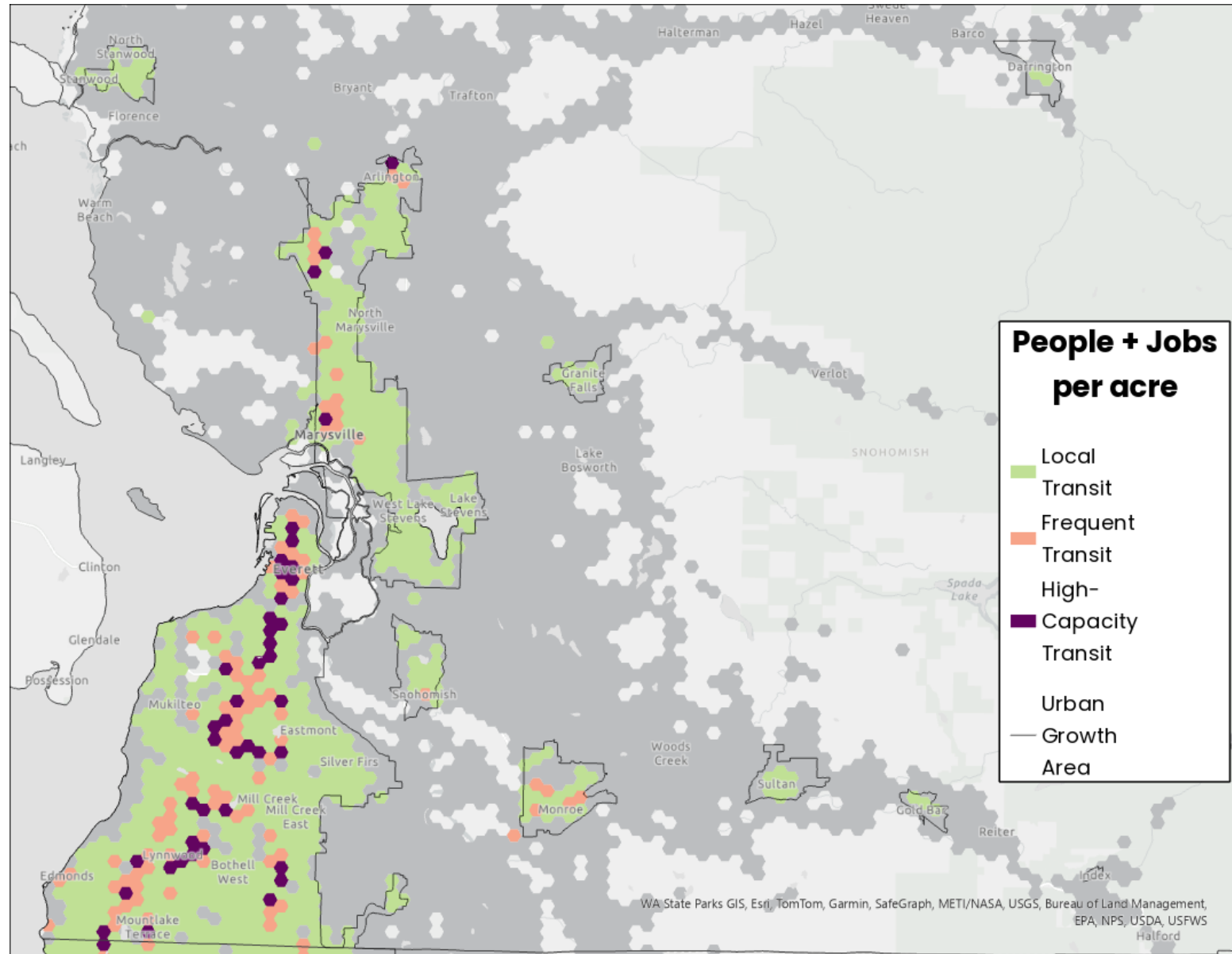
Transit Supportive Density: 2024

- 869,000 people in the **PSRC region** lived in areas that support frequent or High-Capacity transit (**19%** of the population)
- 85,000 people in **Snohomish County** lived in areas that support frequent or High-Capacity transit (**10%** of the population)

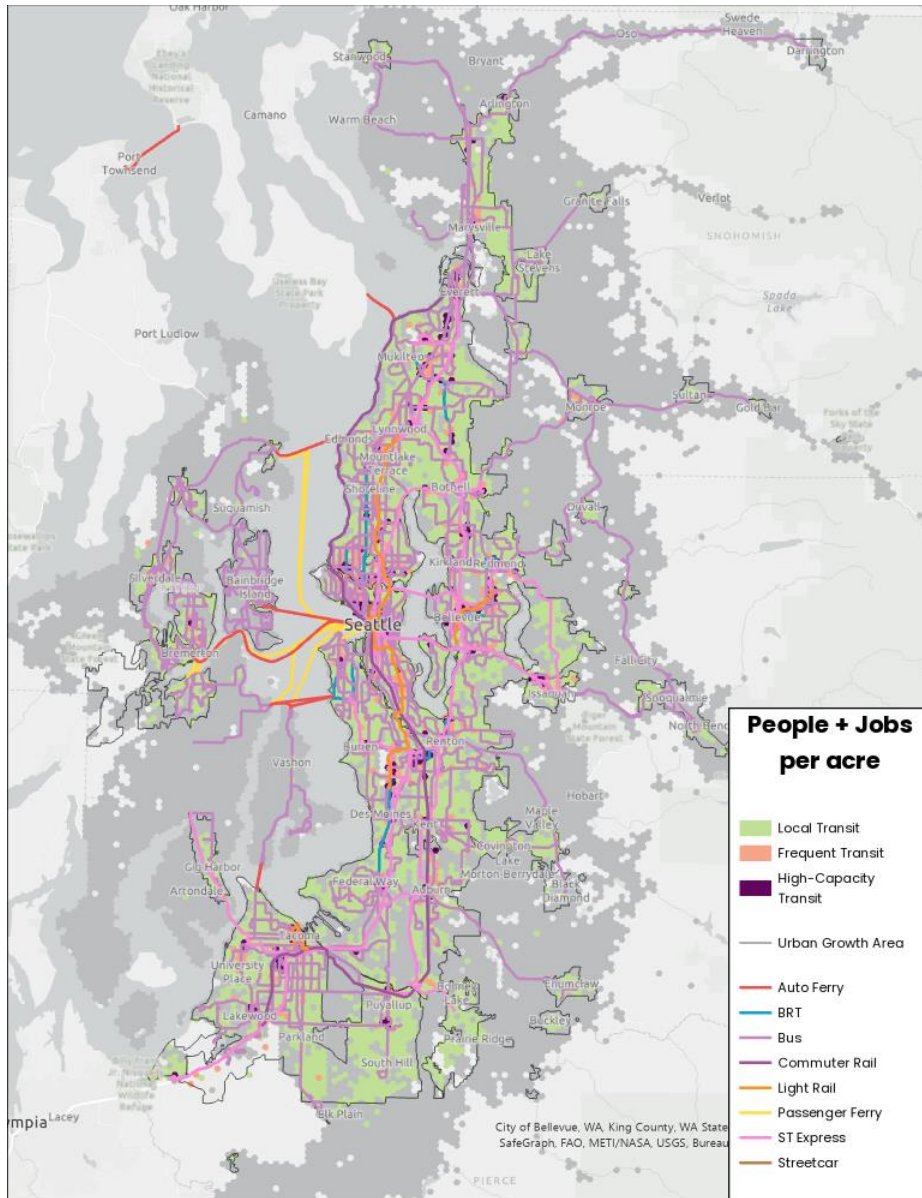


Transit Supportive Density: 2050

- 2,120,000 people in the **PSRC region** will live in areas that support frequent or High-Capacity transit (**36%** of the population)
- 397,000 people in **Snohomish County** will live in areas that support frequent or High-Capacity transit (**32%** of the population)



Where is the transit service?



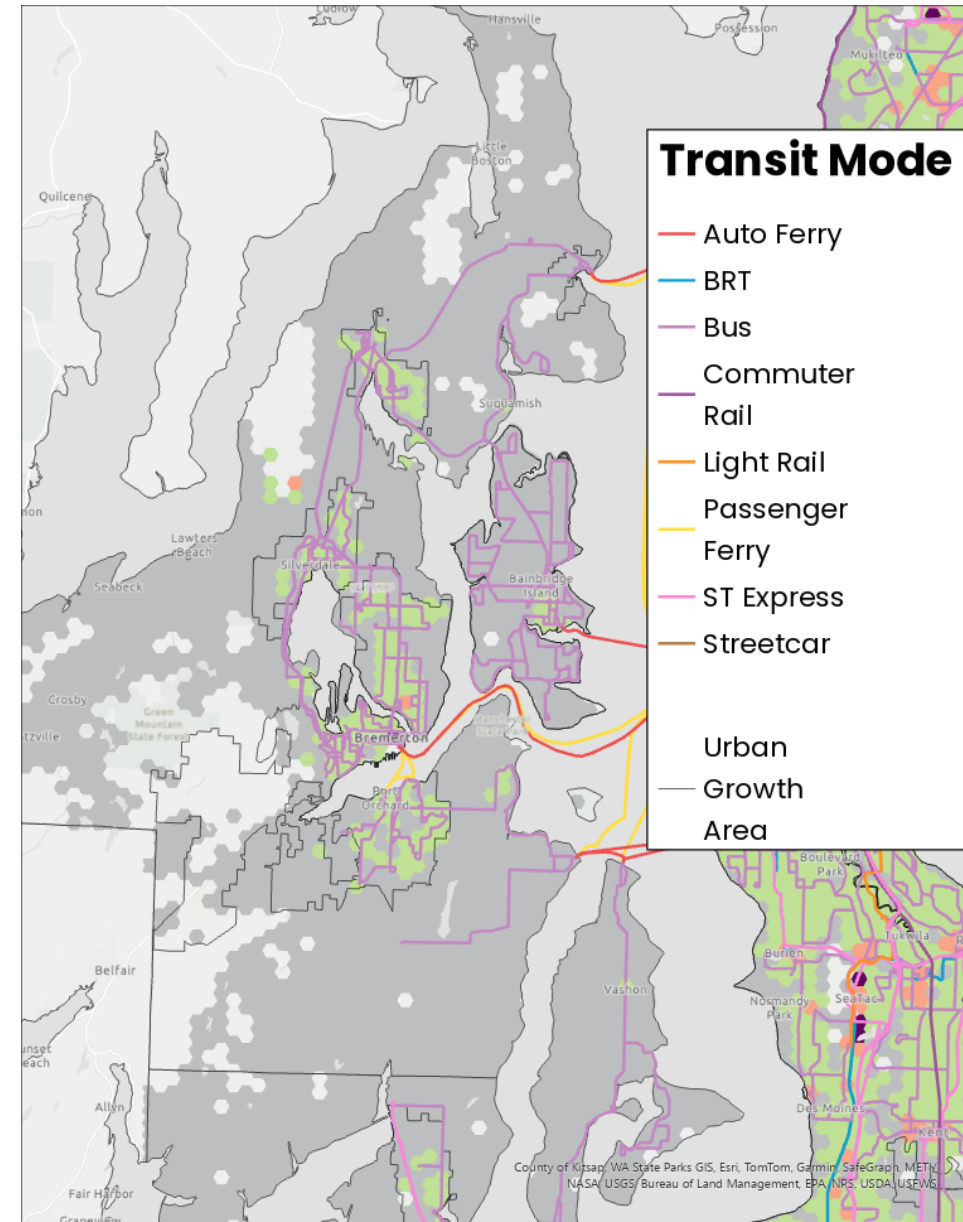
The Regional Transportation Plan will look at where people & jobs are today and 2050 to help identify any possible gaps. The RTP will look at a variety of different types of transit including:

- All Transit
- High-Capacity Transit (Light Rail, Commuter Rail, Street-Car, Ferry and Bus Rapid Transit)
- Frequent Transit
- All-Day transit



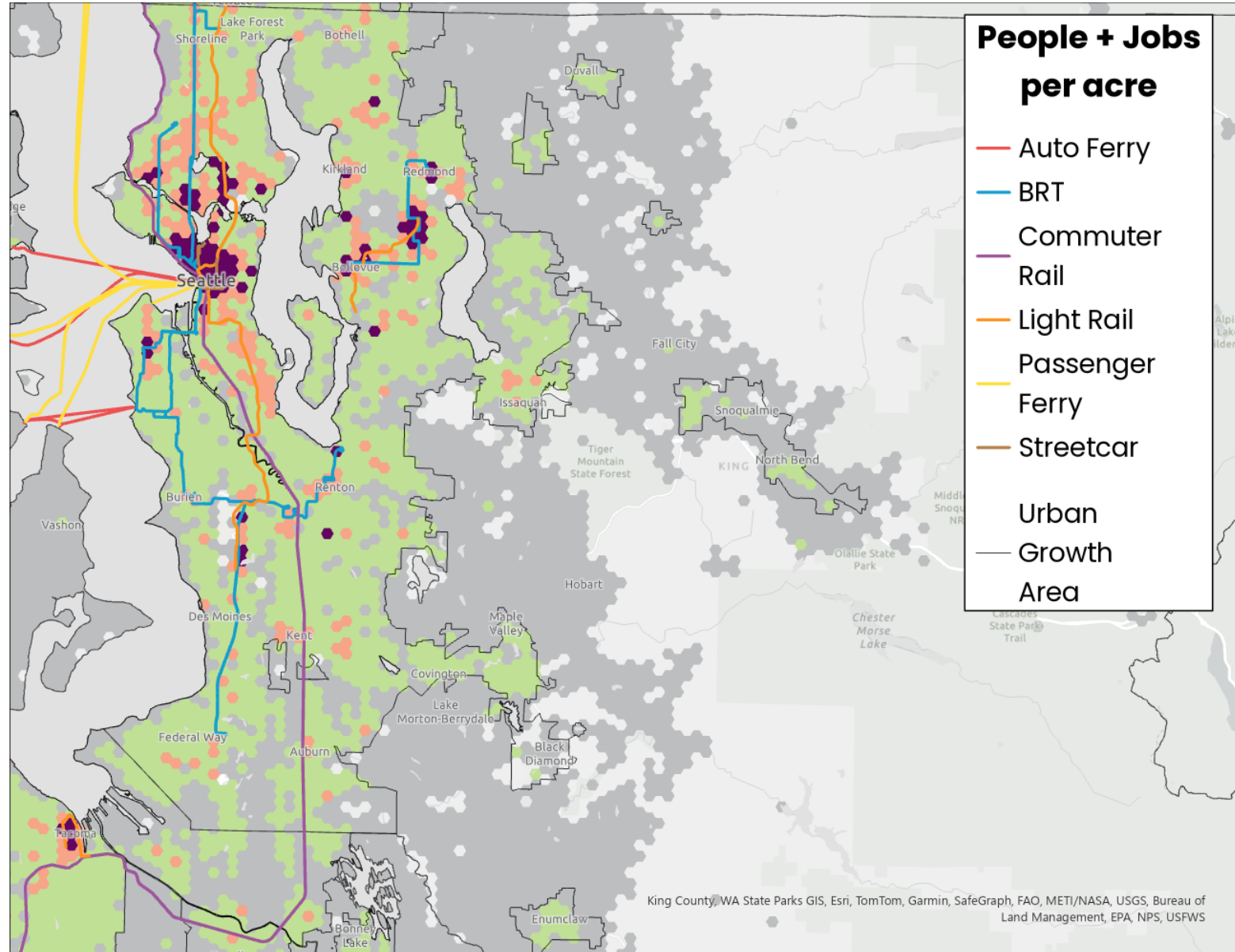
All Transit: 2024

- 3,271,000 people in the **PSRC region** live within ¼ mile of a transit stop (**74%** of the population)
- 165,000 people in **Kitsap County** live within ¼ mile of a transit stop (**60%** of the population)



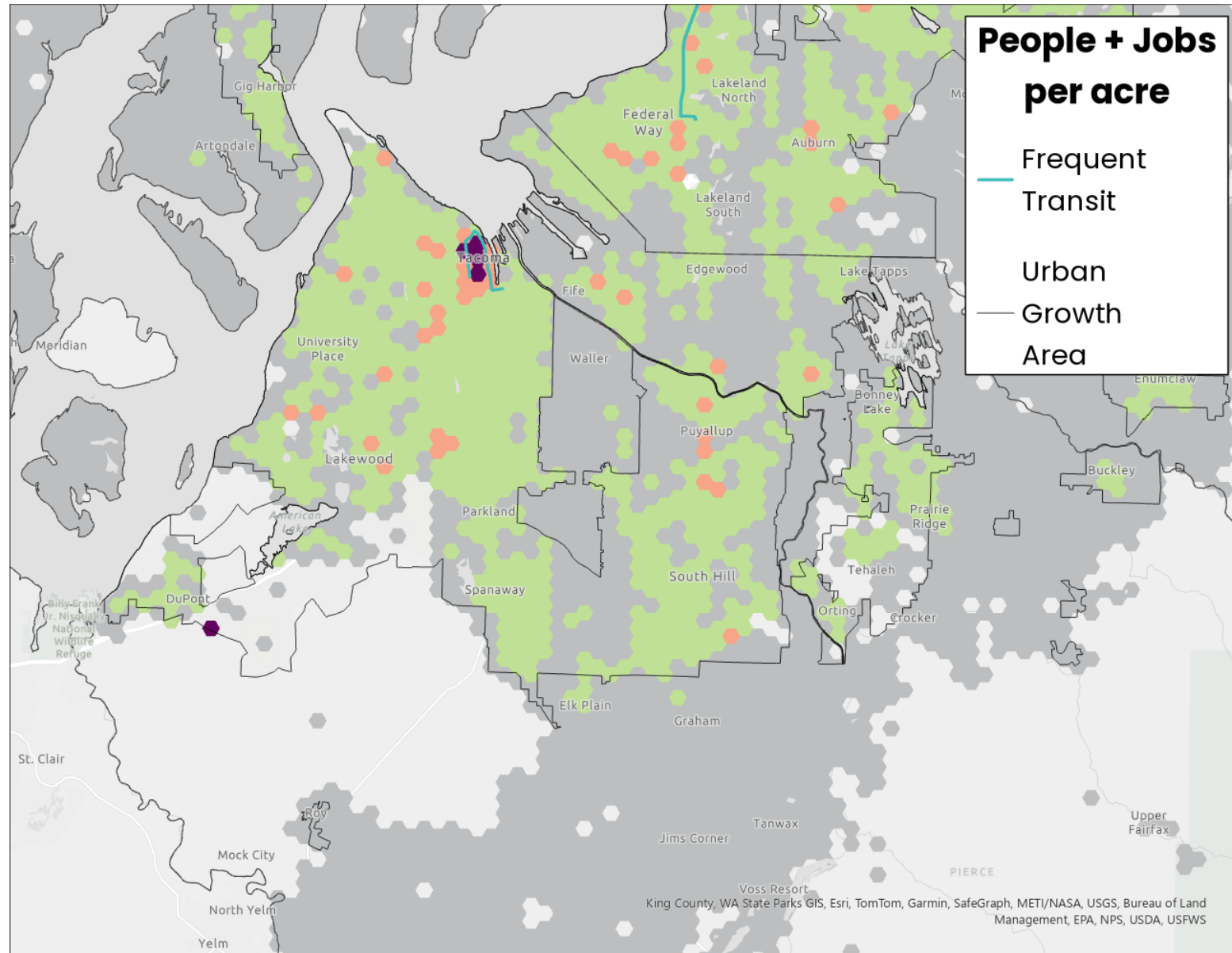
High-Capacity Transit: 2024

- 910,000 people in the **PSRC region** live within ¼ mile of High-Capacity transit (**20%** of the population)
- 690,000 people in **King County** live within ¼ miles of High-Capacity transit (**29%** of the population)



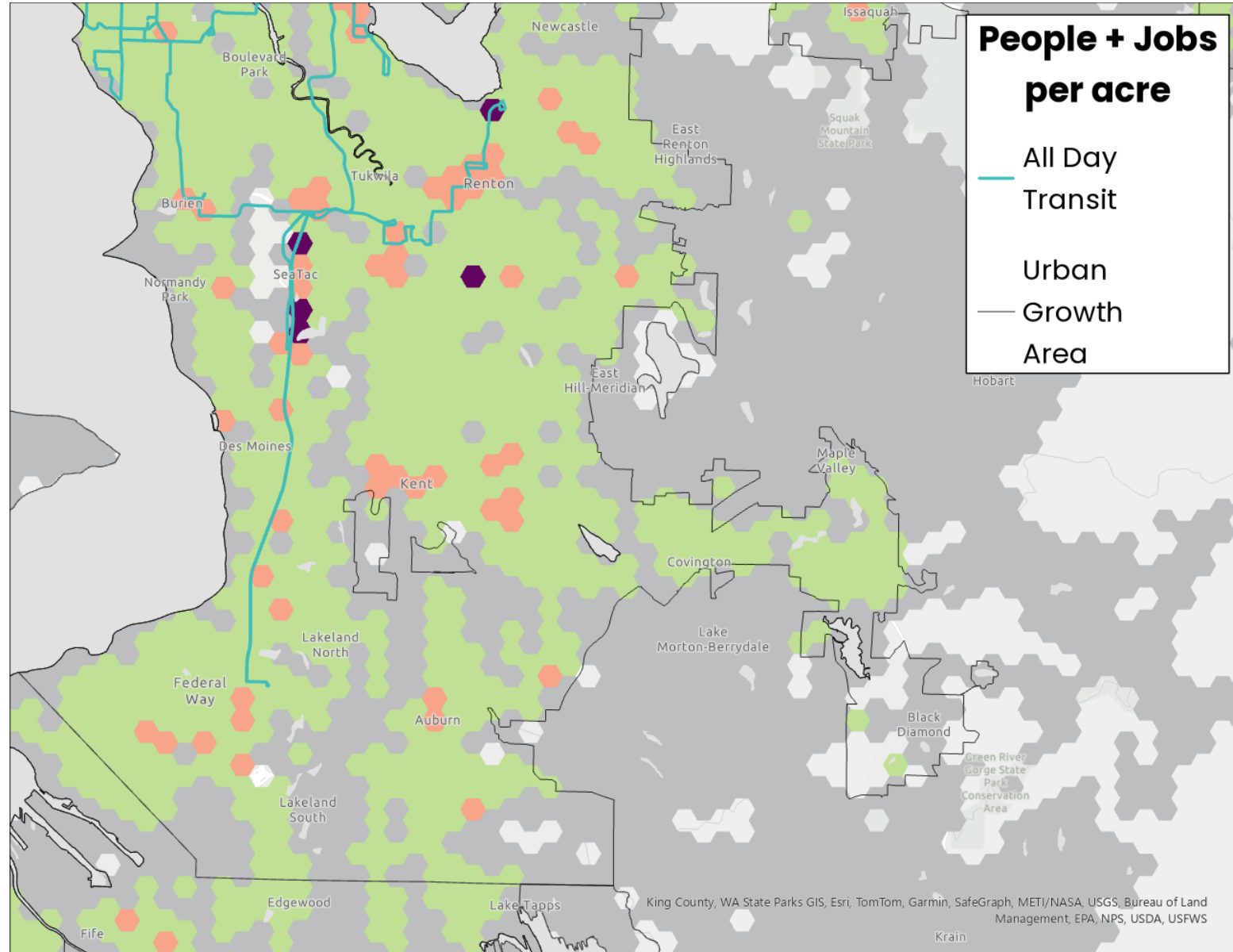
Transit for at least 12hrs & every 15 minutes: 2024

- 665,000 people in the **PSRC region** live within ¼ mile of Frequent transit (**15%** of the population)
- 26,000 people in **Pierce County** live within ¼ miles of frequent transit (**3%** of the population)



Transit 4am -10pm & every 20 minutes: 2024

- 884,000 people in the **PSRC region** live within ¼ mile of All-Day transit (**20%** of the population)
- 803,000 people in **King County** live within ¼ miles of All-Day transit (**34%** of the population)



Upcoming RTP Development Work

A look ahead on RTP work coming up in 2025

Coming soon: month-by-month RTP topic calendar



Regional Transit Access Assessment

“...Develop and update tools and resources to **help identify where access to transit can be improved**, particularly for bicyclists and pedestrians. ”

Transit access in RTP:

- Transit-Oriented Development (TOD)
- Walk, Bike, and Roll
- Transit Service
- Drop-off/Pick-up Modes
- Parking



Coordination with Transit Agencies for RTP



Regional Transportation System

- PSRC will be reporting out on **regional inventory analysis work**.
Examples include:
 - Pedestrian and bicycle
 - Transit, including ferries and microtransit
 - Freight system and more
- Leading to development of a report on **state of the system**, including **identification of gaps**.
 - Anticipate release in late Spring 2025
- **Coming soon:** Month-by-month board calendar on RTP through 2025.



Discussion

Are there questions / feedback on the staff approach?

- **Gap analysis and identification of needs**
- **Information to be provided on the current transportation system**
- **Connection to where people and jobs are**



Thank You!

Paul Inghram, FAICP
Director of Growth Management
pinghram@psrc.org

Craig Helmann
Director of Data
chelmann@psrc.org

Gil Cerise
Program Manager, Transportation
Planning
gcerise@psrc.org



Puget Sound Regional Council