

Title VI Demographic Profile

Equity Advisory Committee

December 5, 2024



Puget Sound Regional Council



We are leaders in the region to realize equity for all. Diversity, racial equity and inclusion are integrated into how we carry out all our work.

psrc.org/equity

Overview

Part I: 2024 Demographic Profile

- Data highlights
- <http://www.psrc.org/media/9039>

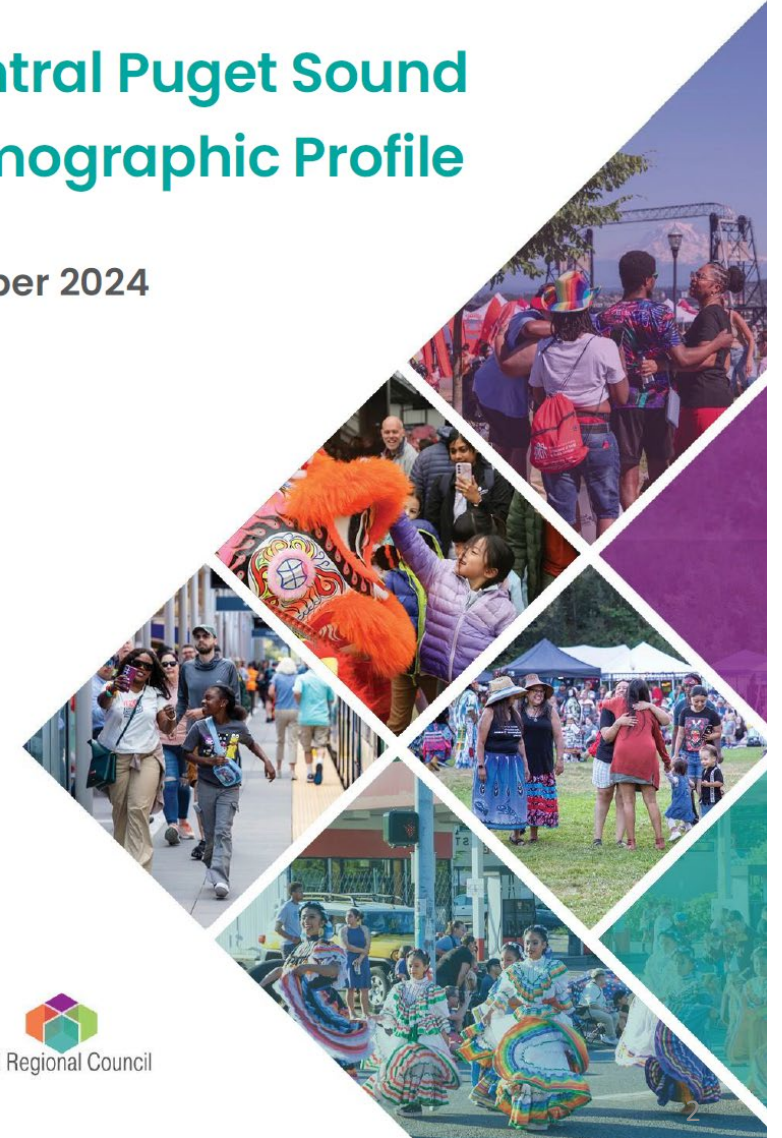
Break

Part II: Next Steps

- Interactive StoryMap report
- Data method improvements
- Potential new equity lenses

Central Puget Sound Demographic Profile

October 2024



Questions for EAC

Do Committee members have questions or feedback regarding the demographic profile including:

- Content and key takeaways
- Relationship to downstream equity efforts
- Interactive StoryMap report
- Ways to strengthen existing profile
- Other aspects of today's presentation



Part I: 2024 Demographic Profile



Puget Sound Regional Council



We are leaders in the region to realize equity for all. Diversity, racial equity and inclusion are integrated into how we carry out all our work.

psrc.org/equity

Title VI of the Civil Rights Act of 1964



Title VI of the Civil Rights Act of 1964 states that:

“No person in the United States shall, on the ground of race, color, or national origin, be excluded from participation in, be denied the benefits of, or be subjected to discrimination under any program or activity receiving Federal financial assistance.”



Title VI Plan

Overview

- Provides framework for PSRC's outreach and engagement work to environmental justice populations, people with limited English proficiency and other impacted communities

Five Program Areas

- Public Involvement
- Planning & Programming
- Environmental Affairs
- Consultant Contracts
- Education & Training



Purpose of Demographic Profile

Compile demographic information for region

- Environmental justice populations (people of color, low-income)
- Language and limited English proficiency
- Additional equity populations (sex, age, disability, etc.)
- Summary statistics and geographic distributions and patterns

For purpose of:

- Informing environmental justice and equity **analyses of disproportionate impacts**
- Supporting **effective public outreach and engagement** of environmental justice and other equity populations

Equity Focus Areas (EFAs)

Based on foundational work in

VISION 2050 & the Regional Transportation Plan (RTP)

Six demographics used to measure and track disparities

People of
Color

People with
Low Incomes

People with
Disabilities

Youth
(Ages 5-17)

Older Adults
(Age 65+)

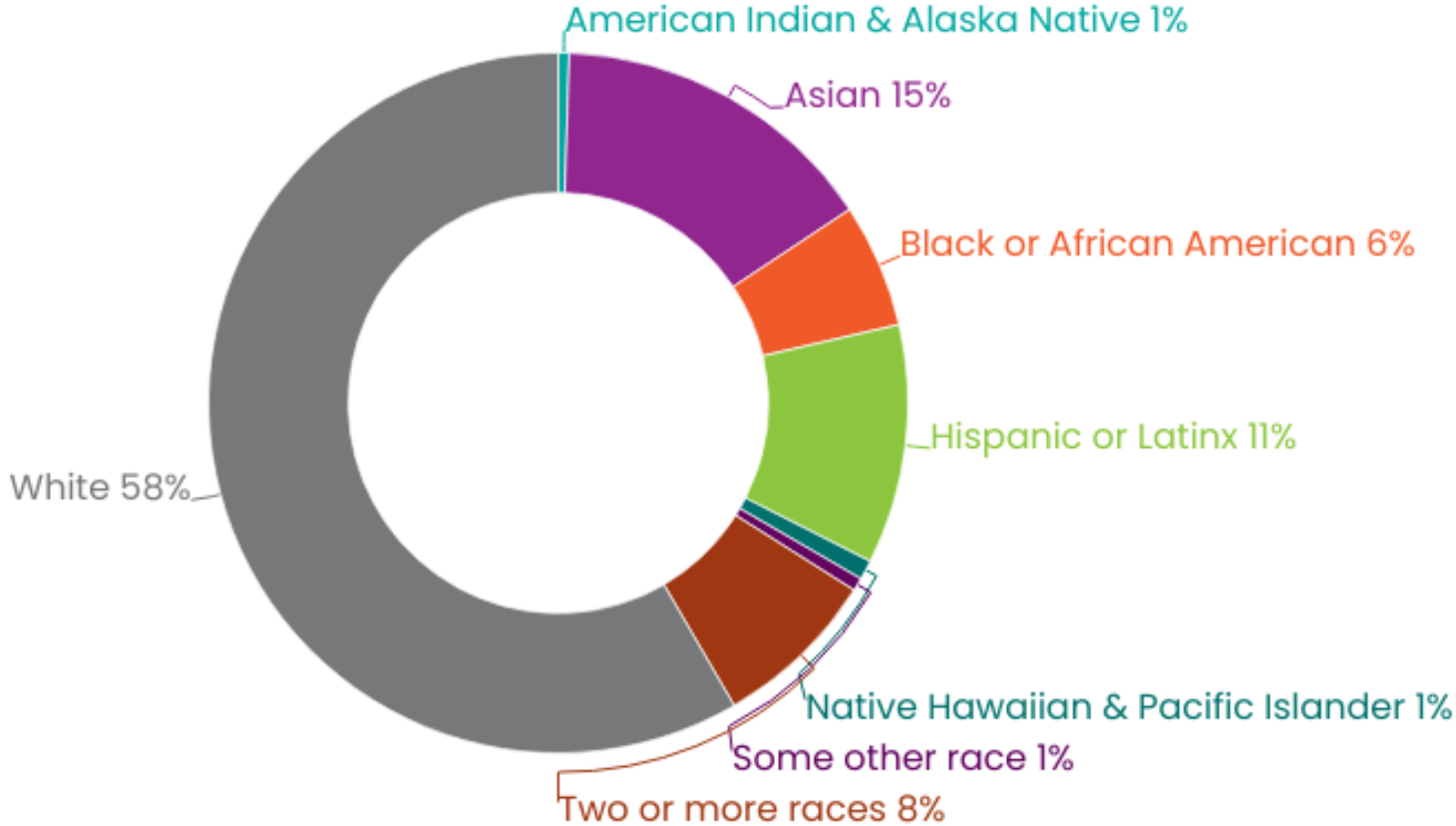
People with
Limited English
Proficiency
(LEP)

Equity Focus Areas (EFAs)
have higher proportions of members of these groups



2024 Demographic Profile - Highlights

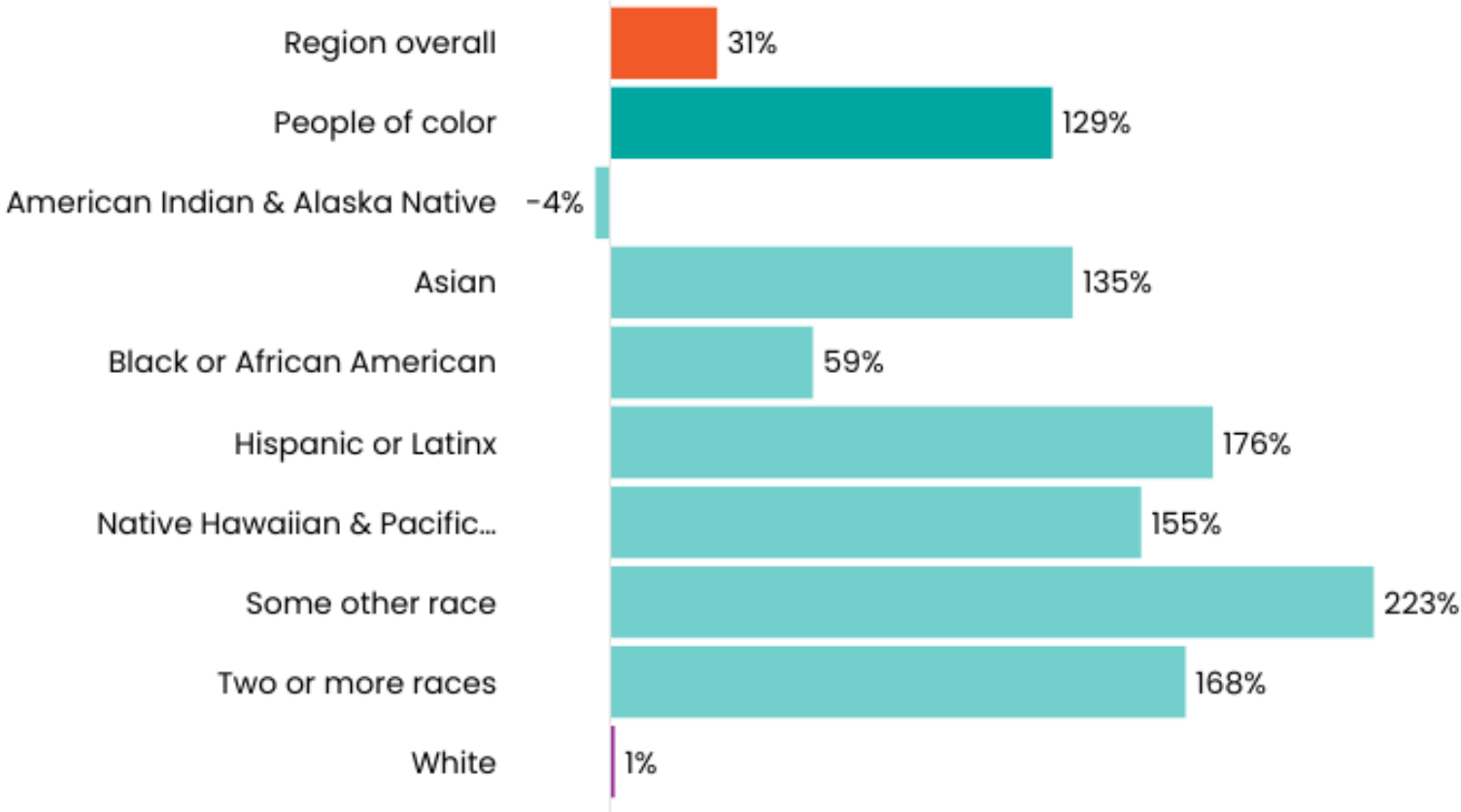
The region is becoming more racially and ethnically diverse



Source: U.S. Census Bureau, American Community Survey, 2022 1-Year Estimates

2024 Demographic Profile - Highlights

Growth over last 20 years driven by increase in people of color populations

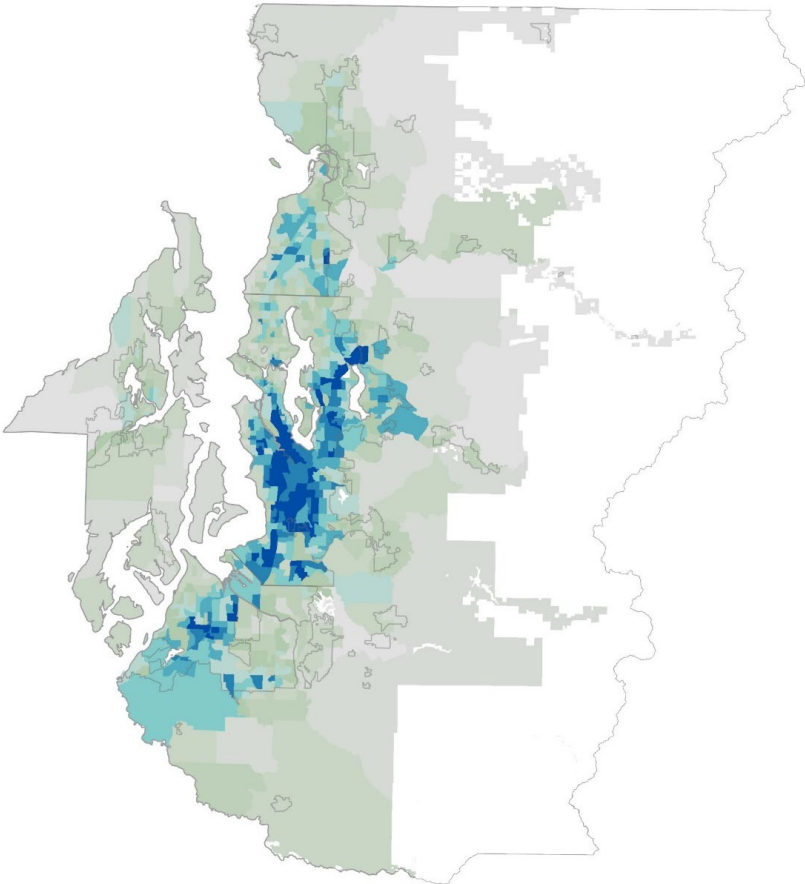


Source: U.S. Census Bureau, Decennial Census, 2000 Summary File 1 and 2020 Demographic and Housing Characteristics File

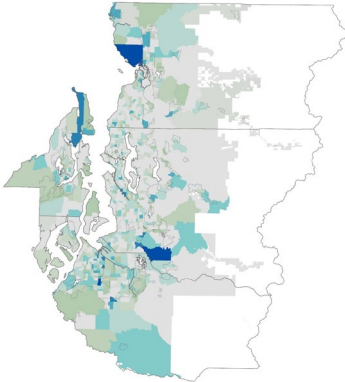
2024 Demographic Profile - Highlights

Mapping the data helps us understand population patterns by race

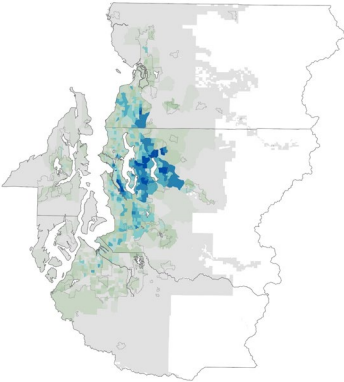
People of Color



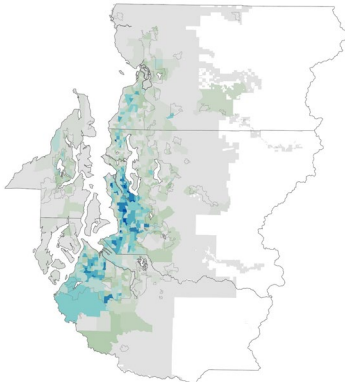
American Indian/
Alaska Native



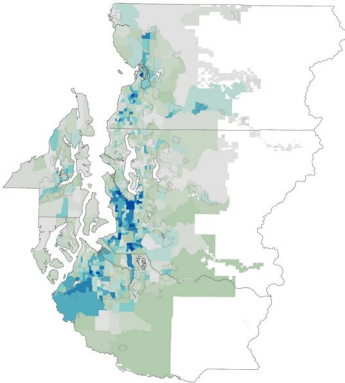
Asian



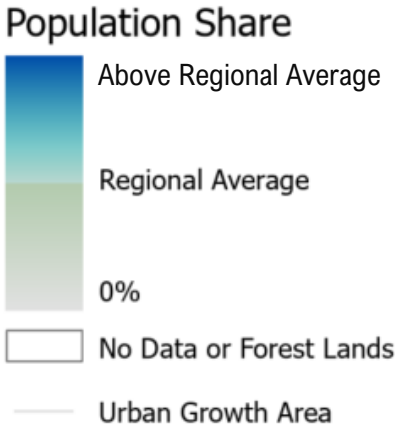
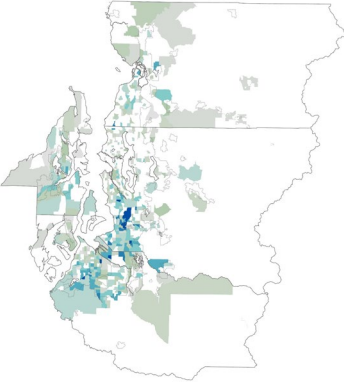
Black/African
American



Hispanic/Latinx

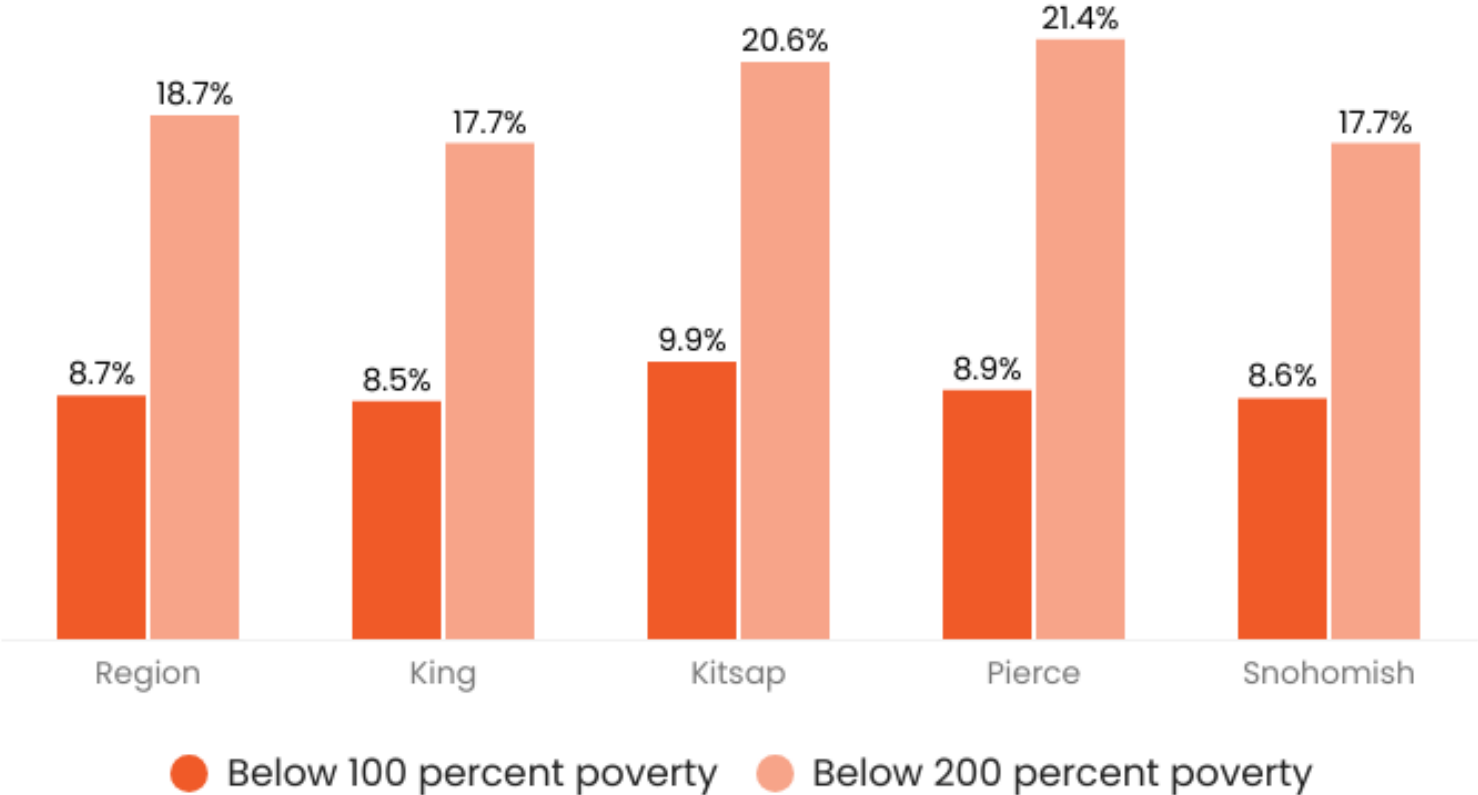


Native Hawaiian/
Pacific Islander



2024 Demographic Profile - Highlights

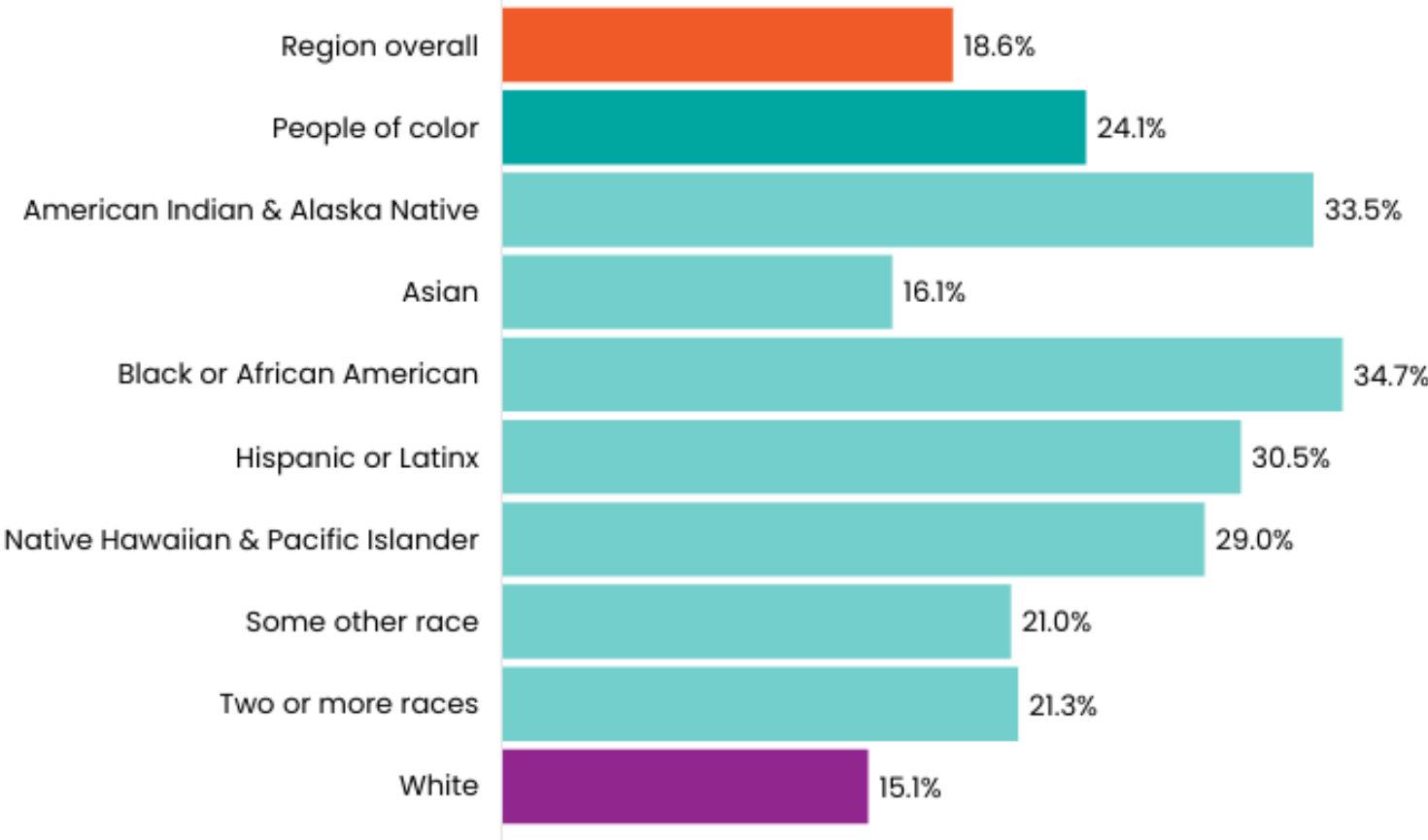
Poverty and low-income rates are lower than during Great Recession



Source: U.S. Census Bureau, American Community Survey, 2022 1-Year Estimates

2024 Demographic Profile - Highlights

Low-income rates are higher for people of color populations

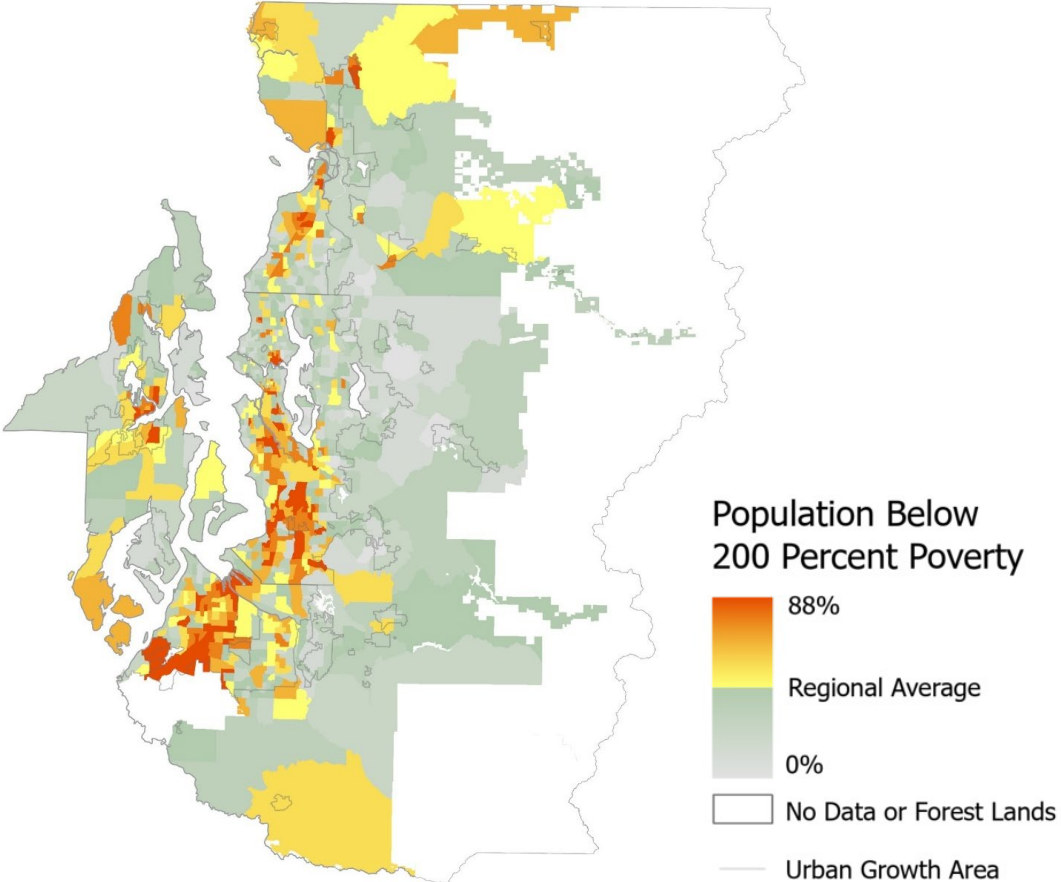


Source: U.S. Census Bureau, American Community Survey, 2022 5-Year Public Use Microdata Sample

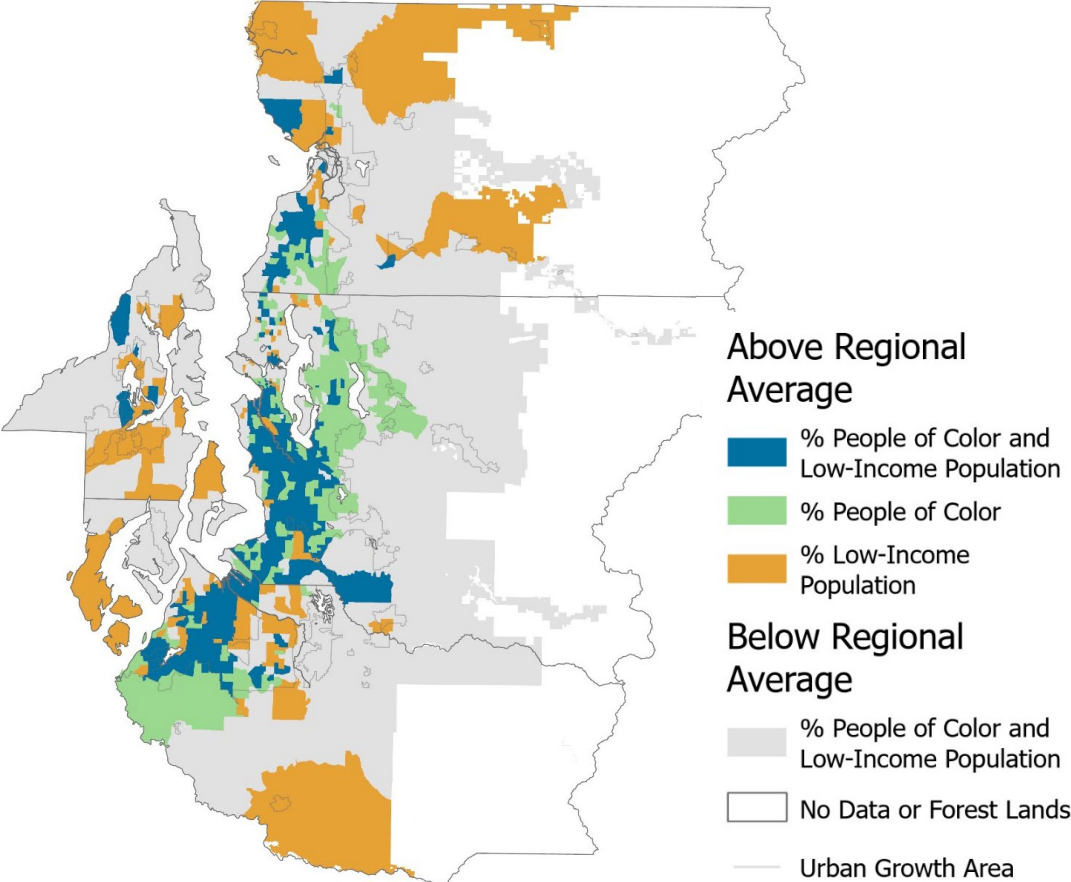
2024 Demographic Profile - Highlights

The profile explores intersectionality between race and income

Low-Income Population

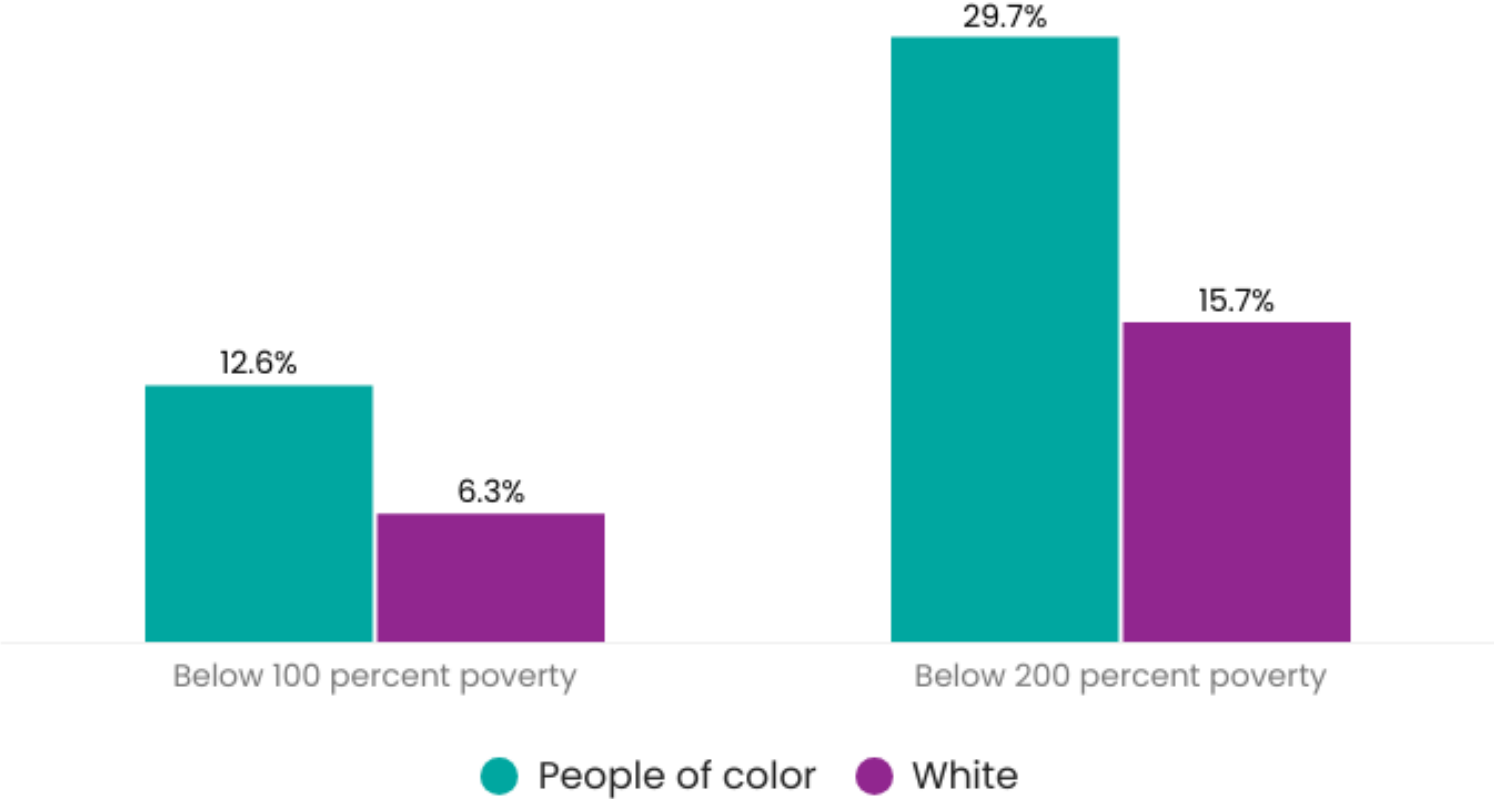


People of Color and Low-Income Populations



2024 Demographic Profile - Highlights

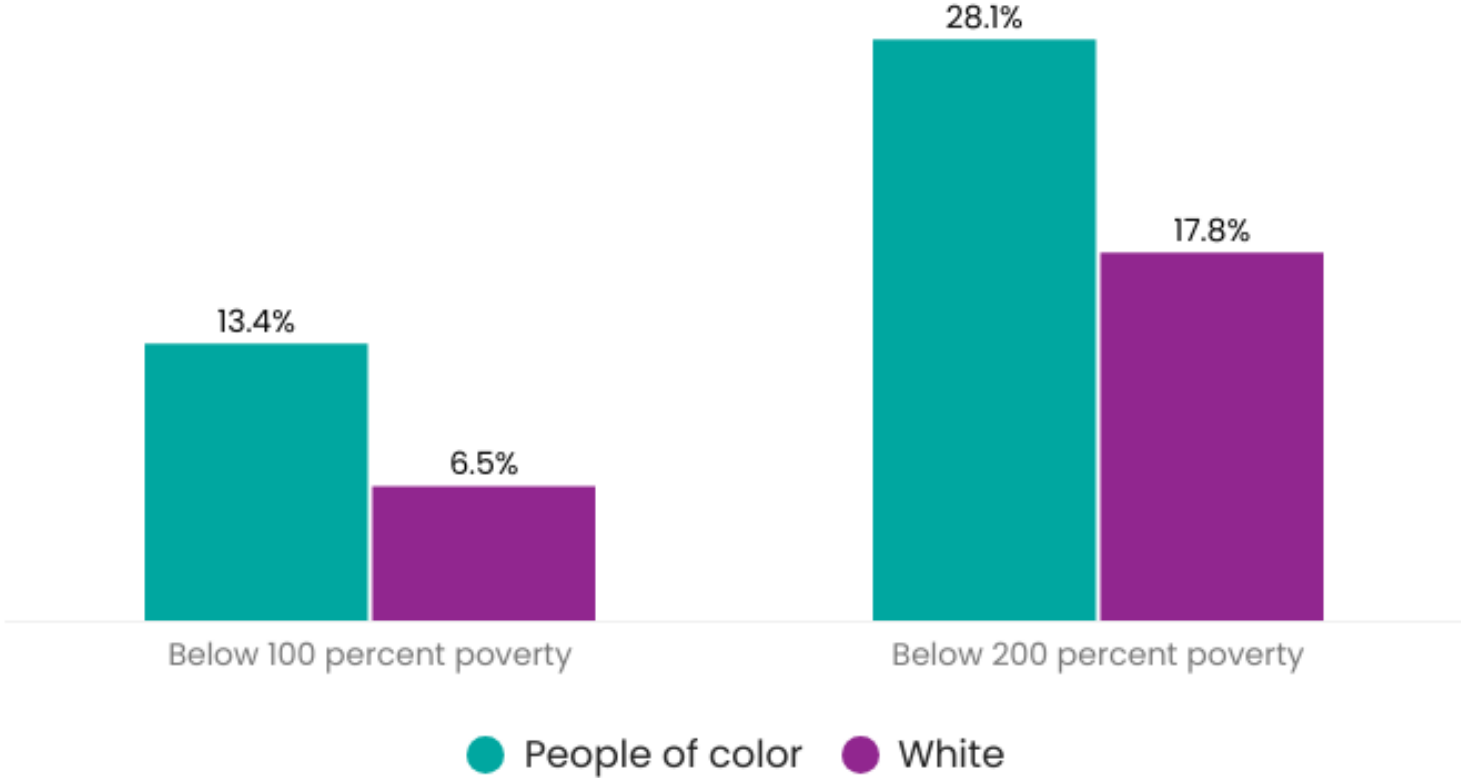
Racial disparities in poverty and low-income rates are seen for youth ...



Source: U.S. Census Bureau, American Community Survey, 2022 5-Year Public Use Microdata Sample

2024 Demographic Profile - Highlights

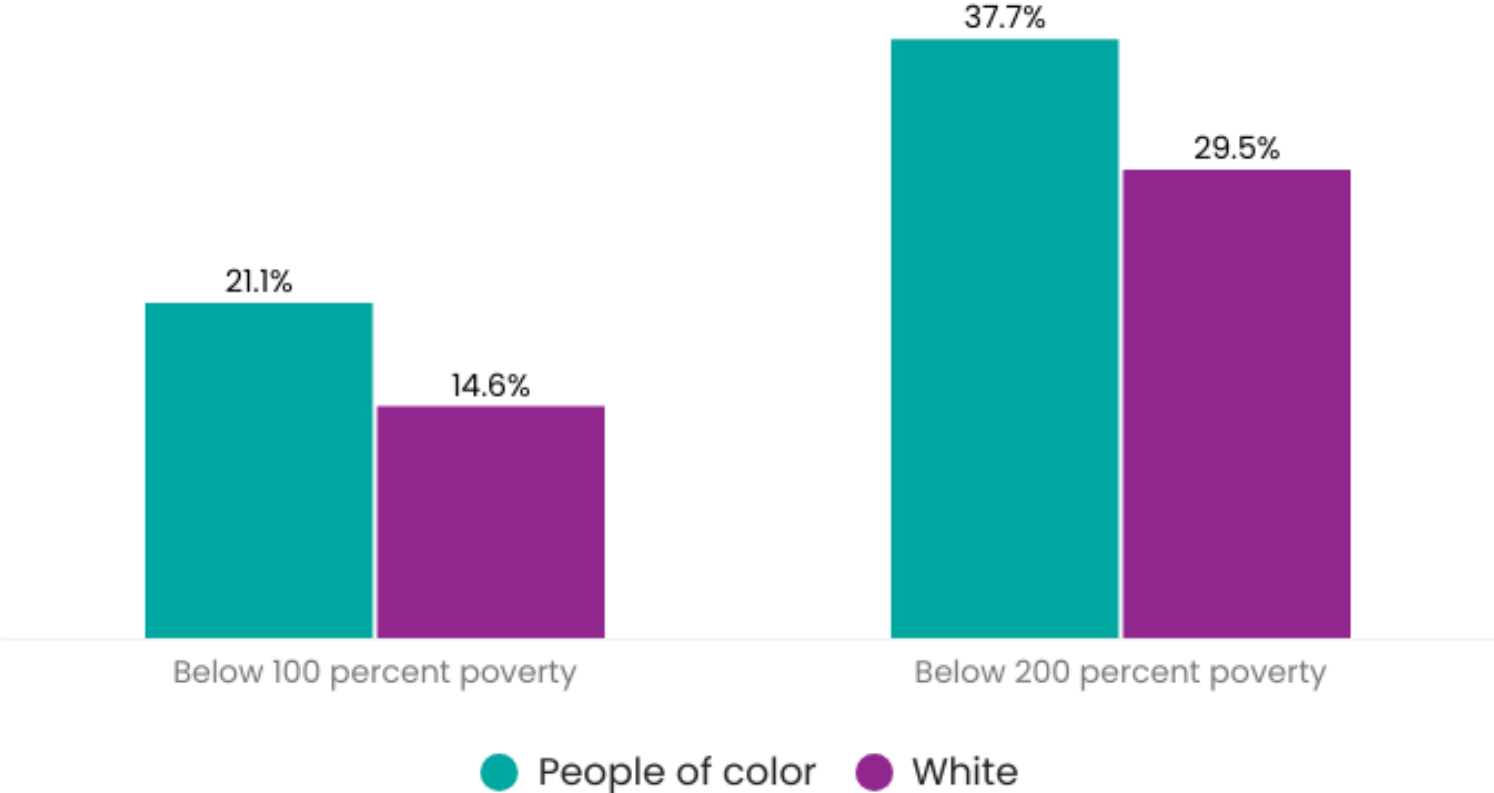
For older adults ...



Source: U.S. Census Bureau, American Community Survey, 2022 5-Year Public Use Microdata Sample

2024 Demographic Profile - Highlights

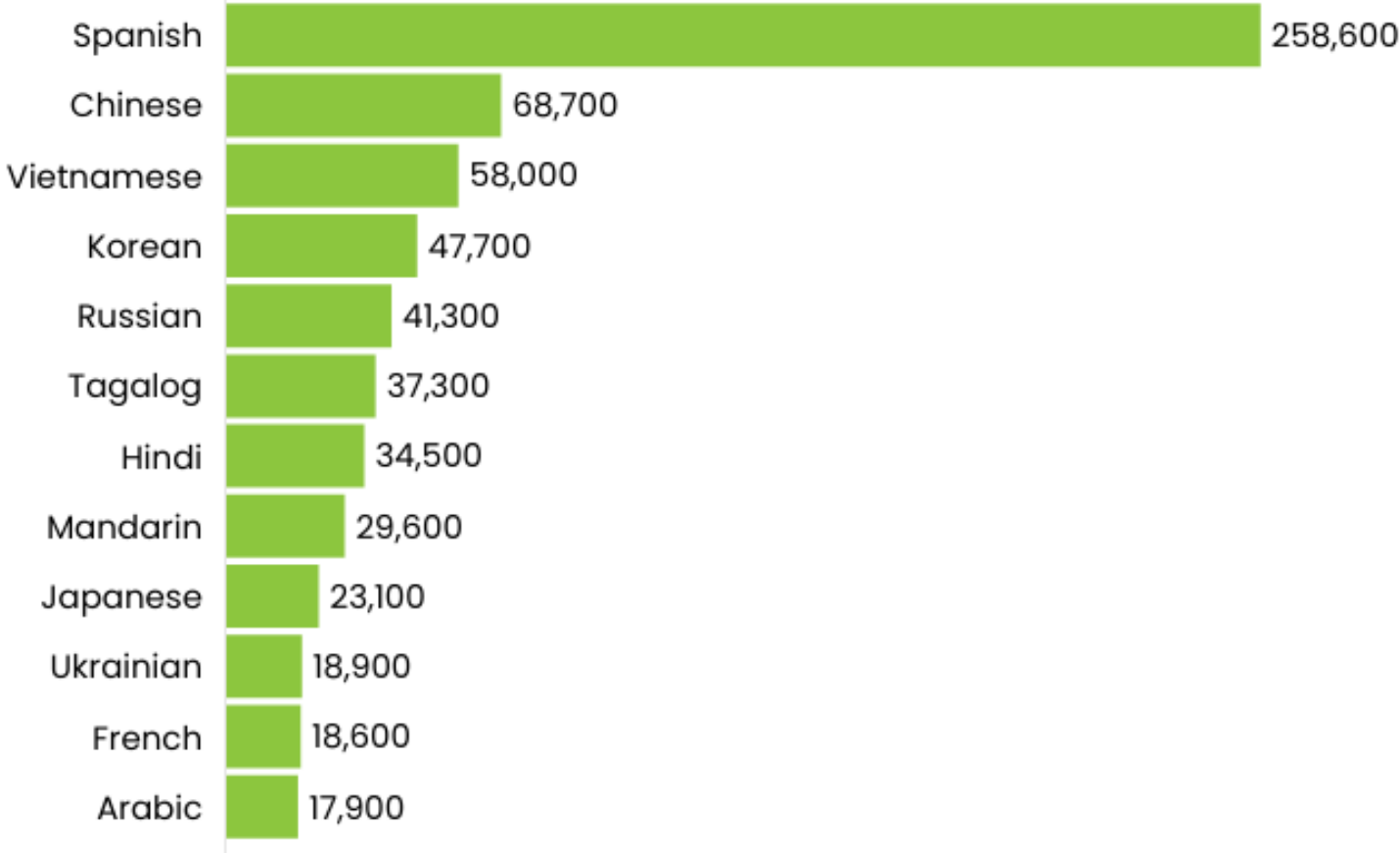
And for people with disabilities



Source: U.S. Census Bureau, American Community Survey, 2022 5-Year Public Use Microdata Sample

2024 Demographic Profile - Highlights

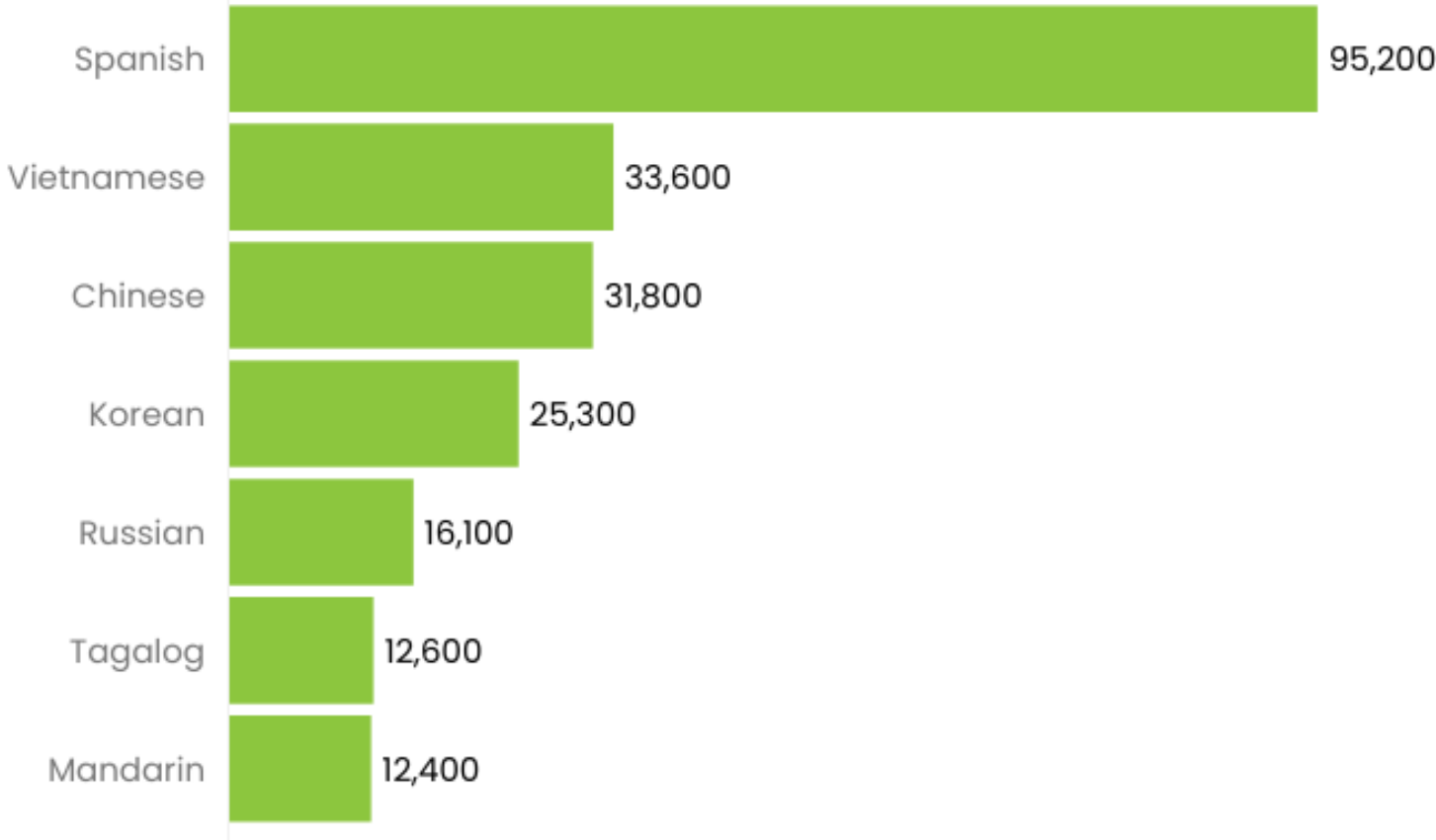
Common languages spoken in the central Puget Sound



Source: U.S. Census Bureau, American Community Survey, 2022 5-Year Public Use Microdata Sample

2024 Demographic Profile - Highlights

Limited English proficiency (LEP) populations



Source: U.S. Census Bureau, American Community Survey, 2022 5-Year Public Use Microdata Sample

Questions for EAC

Do Committee members have questions or feedback regarding the demographic profile including:

- **Content and key takeaways**
- **Relationship to downstream equity efforts**
- Interactive StoryMap report
- Ways to strengthen existing profile
- Other aspects of today's presentation



Part II: Next Steps



Puget Sound Regional Council



We are leaders in the region to realize equity for all. Diversity, racial equity and inclusion are integrated into how we carry out all our work.

psrc.org/equity

Overview

Part I: 2024 Demographic Profile

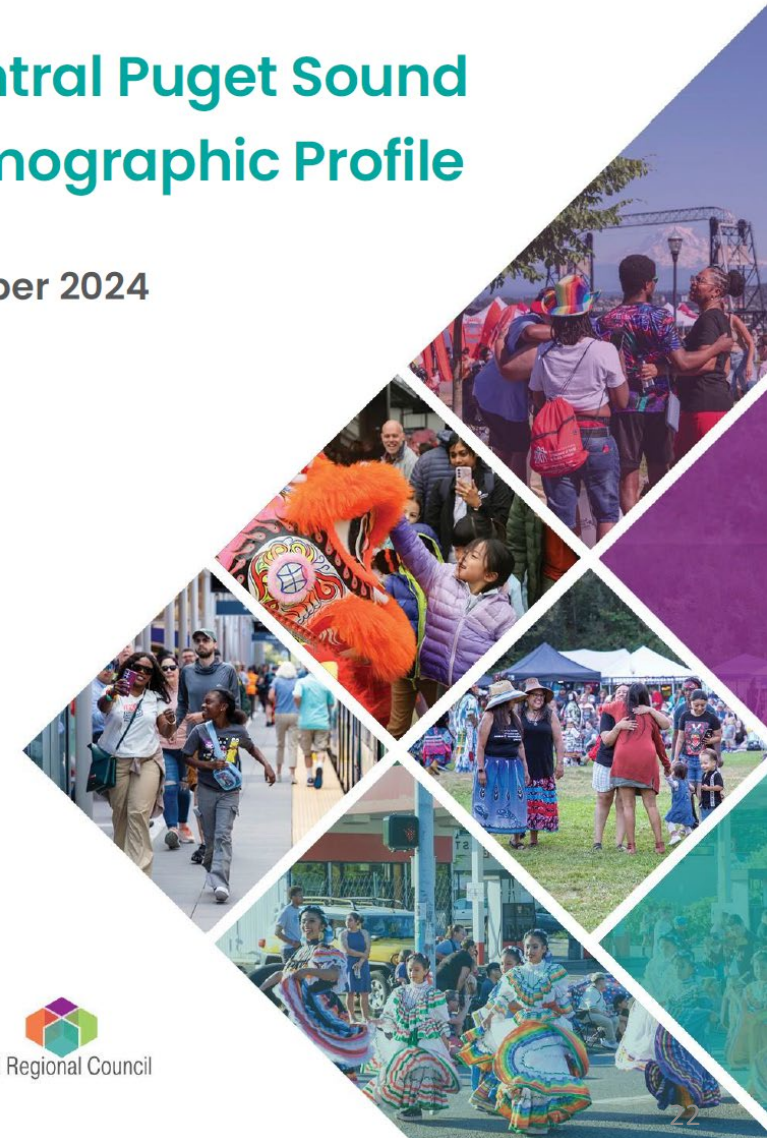
- Data highlights

Part II: Next Steps

- Interactive StoryMap report
- Data method improvements
- Potential new equity lenses

Central Puget Sound Demographic Profile

October 2024

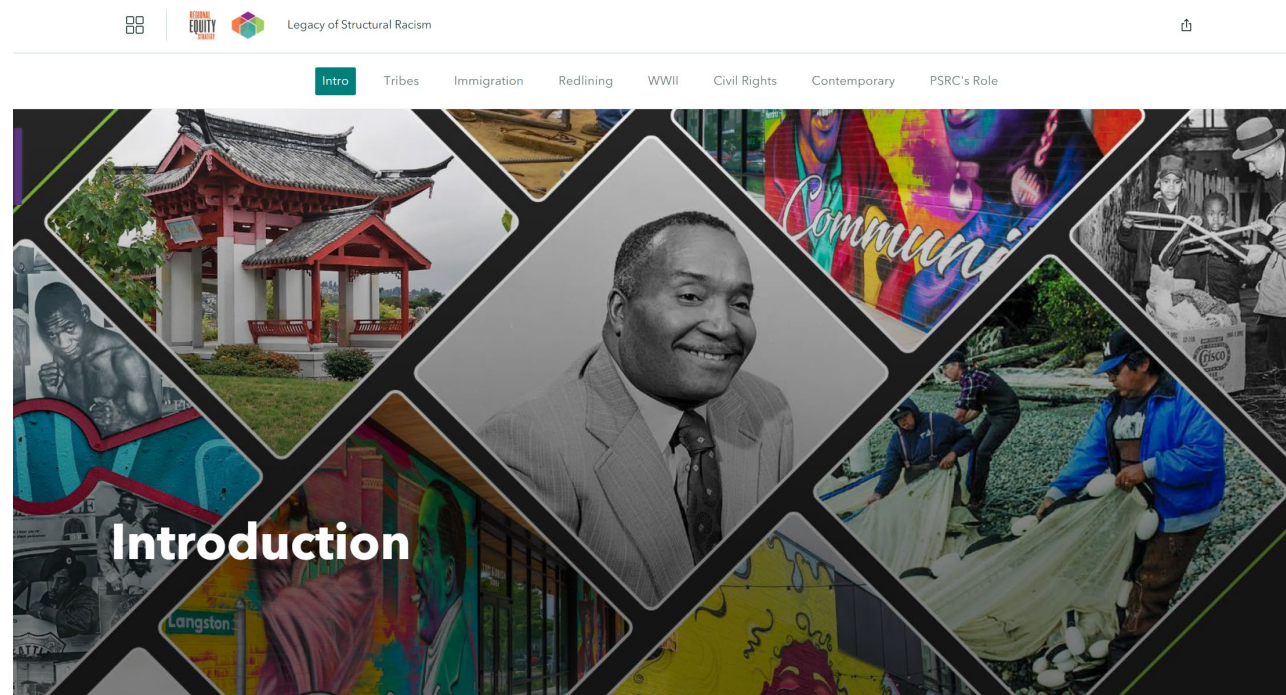


Puget Sound Regional Council

Interactive StoryMap Report

Produce interactive web-based version of demographic profile

- Make content more accessible to general audience
- Highlight key stories and trends
- Provide downloadable data and graphics



Data Method Improvements

Improvements incorporated into 2024 profile:

- Revised race/ethnicity reporting categories
- Expand intersectional analyses
- Confirm person- vs. household-based data

Future exploration:

- Further refine race/ethnicity reporting categories
- Revisit how to report households by race/ethnicity
- Explore methods best suited to highlighting existing disparities

Race and Hispanic/Latinx Origin Reporting

Overlapping Categories

	Not Hispanic or Latinx	Hispanic or Latinx
Race	American Indian or Alaska Native	
	Asian	
	Black or African American	
	Native Hawaiian and Other Pacific Islander	
	White	
	Some other race	
	Two or more races	



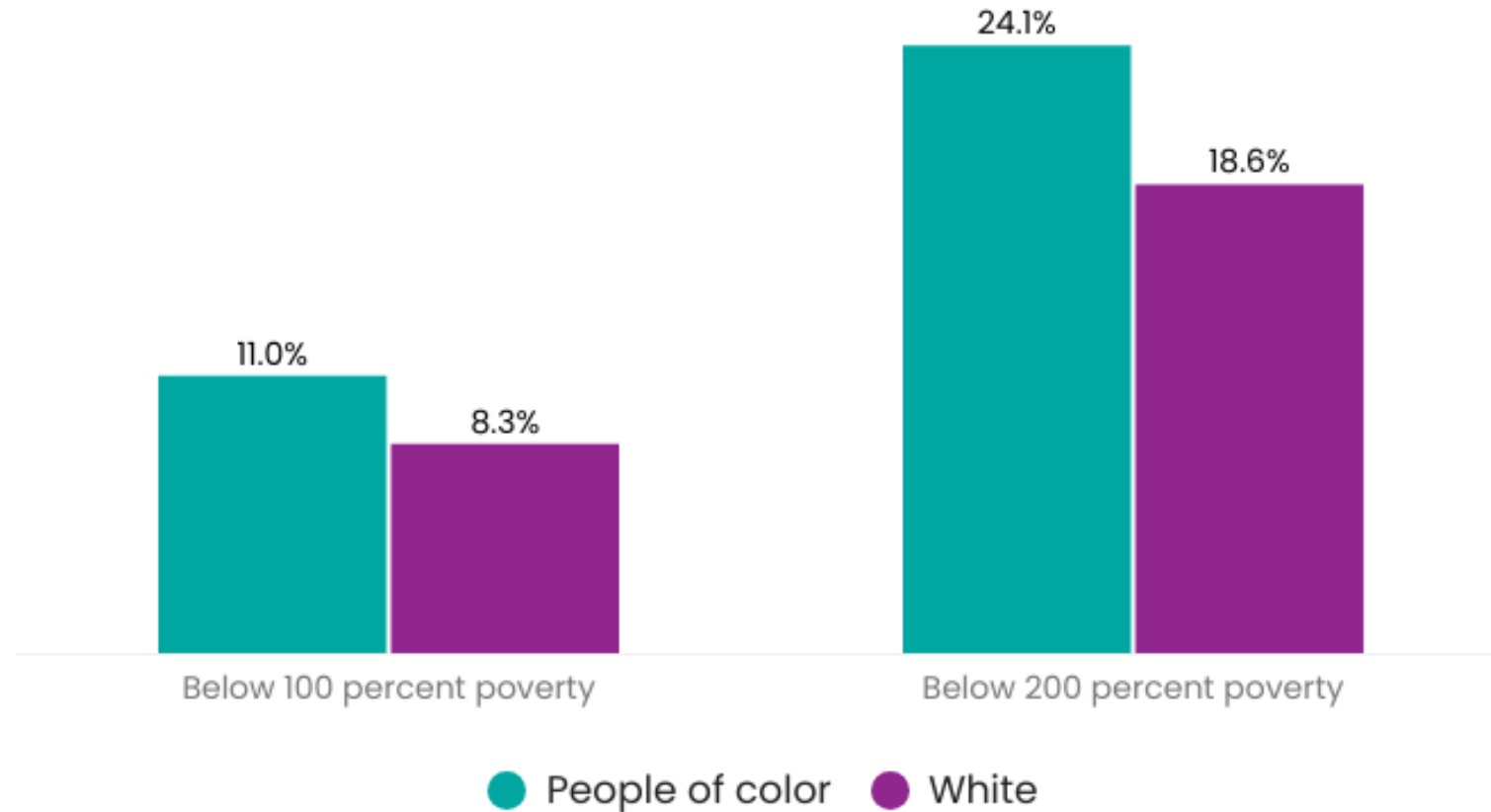
Non-Overlapping Categories

Race and Ethnicity
American Indian or Alaska Native
Asian
Black or African American
Hispanic or Latinx
Native Hawaiian and Other Pacific Islander
White
Some other race
Two or more races



Data Tabulation & Reporting Methods

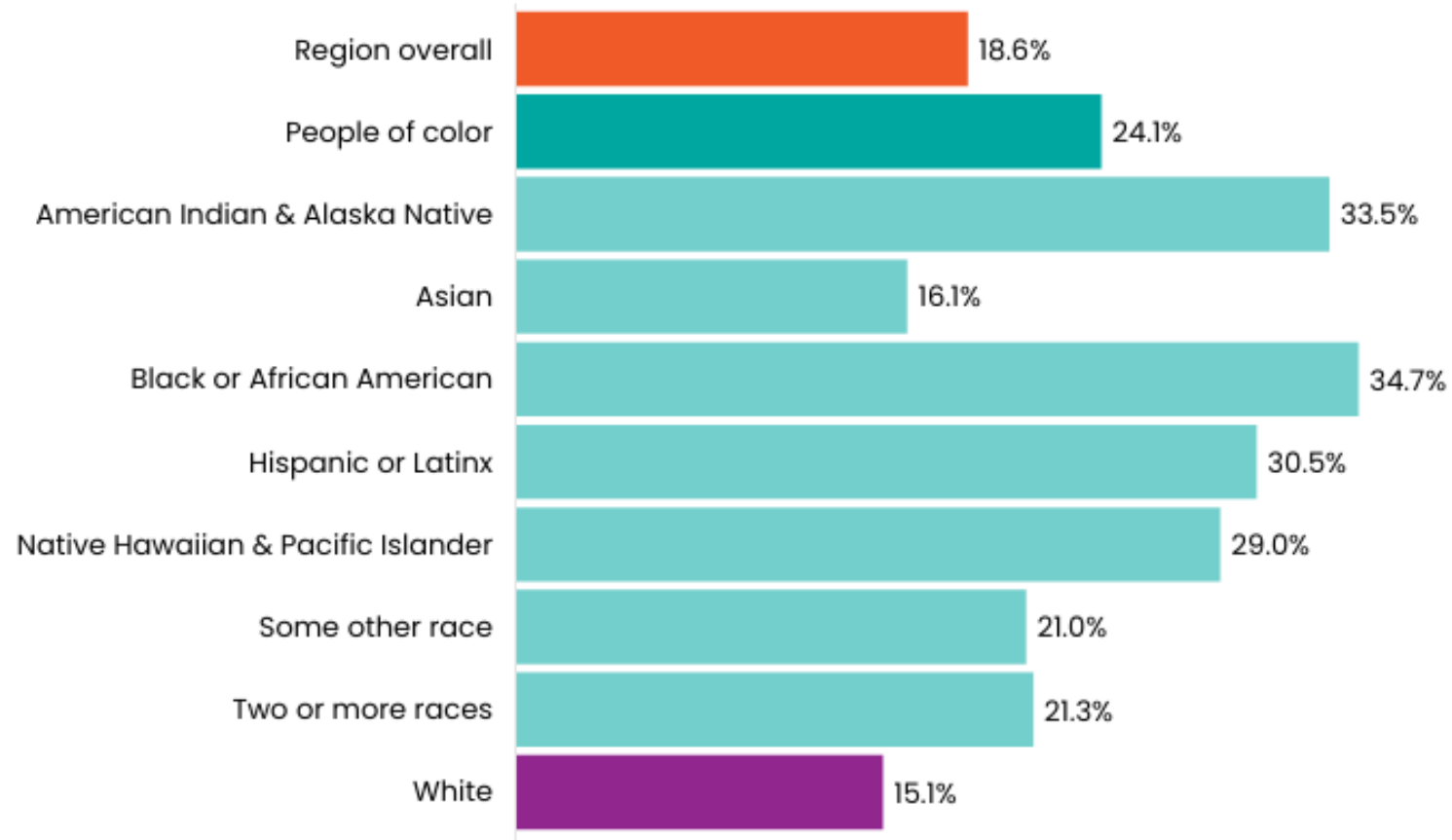
Racial disparities in poverty and low-income rates



Source: U.S. Census Bureau, American Community Survey, 2022 5-Year Public Use Microdata Sample

Data Tabulation & Reporting Methods

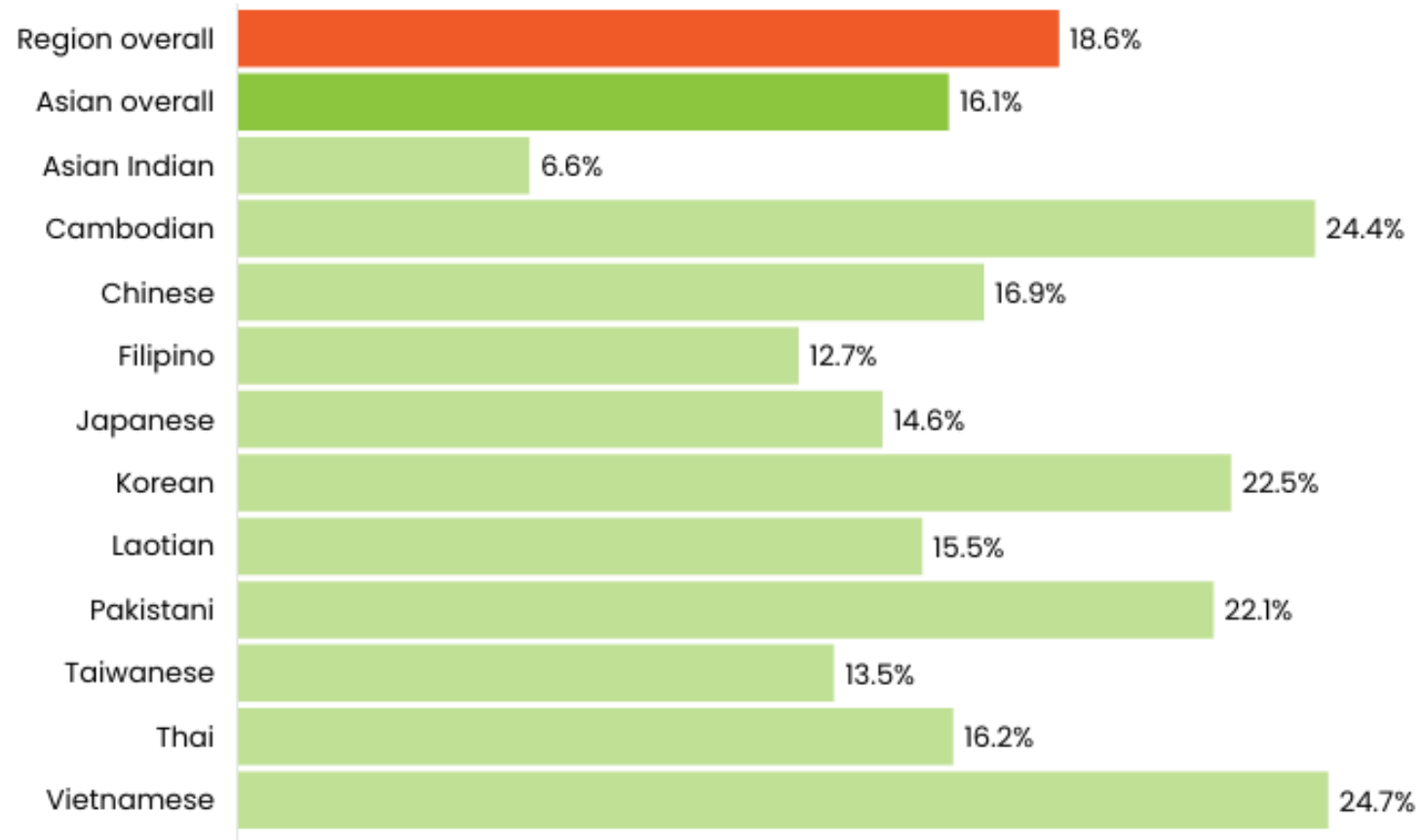
Low-income rates vary across people of color populations



Source: U.S. Census Bureau, American Community Survey, 2022 5-Year Public Use Microdata Sample

Data Tabulation & Reporting Methods

Low-income rates vary widely across Asian populations



Source: U.S. Census Bureau, American Community Survey, 2022 5-Year Public Use Microdata Sample

2024 Profile – Equity Populations

Dimensions	Equity Focus Areas	Additional Characteristics
Race & Ethnicity	-People of color	-Race and Hispanic/Latinx origin detail -Asian sub-population detail
Income	-People with low incomes <200% poverty	-Income <100% and <150% poverty -Median household income
Language	-People with limited English proficiency	-Common languages spoken
Age	-Youth (age <18) -Older adults (age 65+)	
Ability	-People with a disability	
Sex		-Women
Household Type		-Single parent households
Vehicle Ownership		-Zero-vehicle households



Potential New Equity Lenses

Equity lenses suggested by EAC and subcommittee:

- Neurodiversity
- Sexual orientation and gender identity
- Education and educational attainment

Questions for EAC

Do Committee members have questions or feedback regarding the demographic profile including:

- Content and key takeaways
- Relationship to downstream equity efforts
- **Interactive StoryMap report**
- **Ways to strengthen existing profile**
- **Other aspects of today's presentation**



Next Steps

Project Check-Ins with Equity Advisory Committee

December 2024

2024 Profile
Summary &
Next Steps

June 2025

Project
Check-In

Late 2025

Interactive
StoryMap
Report
Released





Thank You!

Carol Naito

Program Manager – Data Applications
cnaito@psrc.org



Puget Sound Regional Council