



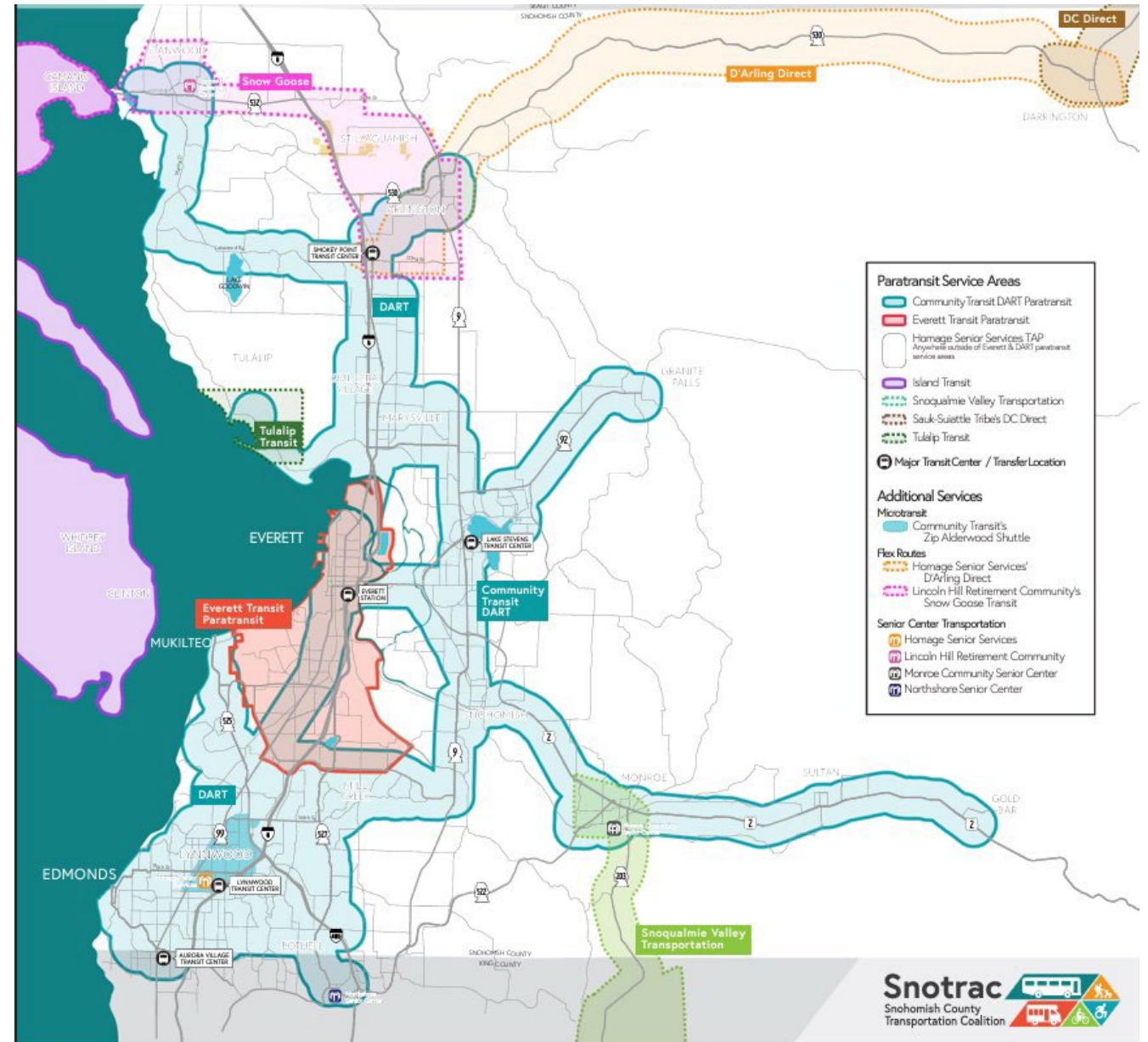
**Homage**<sup>®</sup>  
*Well-being as we age*

---

# Homage's Transportation Assistance Program TAP Expansion

Saturday Service  
Volunteer Drivers  
Inter-county Transportation  
Snow Goose Coordination

# TAP Sustain will continue to cover the entirety of Snohomish County.



# Carrying the underserved population

- 1,434 unduplicated clients
- Majority are female at 64%
- Median age: 61 years old
- 817 clients have a disability (57%)

Our riders live outside  $\frac{3}{4}$  of a mile from regular bus service. **The further a person lives from a major city, the more underserved the population.**

# TAP Expansion

- Unexpected funding in 2024 has allowed a **Saturday pilot service** to begin with one bus. An expansion up to three buses is the next step. Currently trending in Q1 28 trips per month on Saturdays.
- There is a growing need for Snohomish County's aging citizens **to leave the county for specialized medical care**. TAP Expansion will address that need and cross county lines for medical appointments with a Volunteer Driver Program.
- Homage has a robust **Volunteer Driver Program** that would now fall under TAP. In 2023 the Volunteer Driver Program completed 842 trips and **2024 is trending to 1,128 trips!** Both years they have had to deny service due to lack of volunteer drivers. With WSDOT funding, TAP could support this program for even greater success.
- **Coordination** with Snow Goose Transportation on a **NEW** fixed route in the northwest area of Snohomish County.

# Crossing County Lines

Minimum for ambulatory rider:

\$56 for a 5-mile one-way trip, each additional mile is \$4.00

Example from actual caller:

Distance from home in Woodinville to Harborview in Seattle is **and 58 miles round trip**

First 5 miles = \$56

Next 24 miles = \$96

Fuel charge \$2.50 per leg (5 legs @ 5 miles each) = additional \$12.50

**\$329 round trip**

Passengers in a wheelchair cost a base of \$71 then the add-ons. **\$359 round trip**

*\*\$35 fare still in calculations for 2025*

Round trip \$37.99  
Volunteer Driver  
Mileage Reimbursement  
Rider = zero fare

Round trip \$348  
Wheelchair Rider, ADA  
Vehicle, Professional Driver  
Rider = \$35 Fare\*

# New Transportation Options

**TAP Expansion is a four-year project to provide new options for TAP Sustain riders.**

TAP Expansion will offer demand response service on Saturdays, grow a Volunteer Driver Program, cross county lines for medical appointments, and formally support coordination with a new Snow Goose fixed route to eliminate gaps in service for older adults, persons with disabilities, and low-income individuals who live outside the paratransit boundaries.

**TAP Expansion services will support the dynamic of transportation for Snohomish County residents.**

- Eliminating gaps across county lines**
- Flexibility of a volunteer driver program**
- Saturday bus service**
- Coordination with a new fixed route**

