

# Freight Advisory Committee

August 14, 2024

Puget Sound Regional Council



# Agenda

**1. Welcome and Introductions (9:30) – Geri Poor, Chair**

Roll call and introductions.

**2. Action: Approve Meeting Summary for June 12, 2024\* (9:35)**

**3. Action: FAC Operating Procedures and Membership\* (9:40)**

PSRC will share an update on the FAC Operating Procedures based on feedback from the June 12 meeting. Since the operating procedures include changes to membership, this will be a committee action.

**4. Discussion: Truck Parking Update (9:55)**

WSDOT will share information about the state's current truck parking planning efforts and answer questions from the committee.

**5. Discussion: Update on Regional Safety Plan (10:15)**

PSRC will provide an update on the development of a Regional Safety Action Plan, including discussing the initial results of the data analysis and the state of the practice review.

**6. Discussion: 2026 RTP Freight Focus Topics\* (10:50)**

PSRC will share the results of the recent survey on committee focus priorities for development of the 2026 RTP.

**7. Discussion: Other Business and Announcements (10:55)**

**8. Next Meeting: October 9, 2024**

**9. Adjourn (11:00)**



# PSRC Committee Assessment

- PSRC's Transportation Planning Division currently administers and supports eight (8) standing committees
- The administration and support represents a substantial workload for staff and time commitment for committee members

## Goals:

- Ensure that transportation planning committees advance key PSRC work program goals and objectives
- Ensure that membership and meeting cadence of committees are appropriate to meeting those goals and objectives
- Make most efficient use of members' time



# PSRC Committee Assessment

## Key FAC Findings

- 1) Membership structure is large with 33 voting seats and 5 non-voting
  - Structure based on outdated subarea definitions from the previous Industrial Land Analysis
- 2) Small number of core members regularly participate, but many seats are either vacant or have low participation
  - Average 12 members (31%) at meetings from mid-2022 thru 2023
  - Average of 13 non-members at meetings during same period
- 3) High overlap between FAC and RPEC membership



# PSRC Committee Assessment

## FAC Purpose:

- Provide technical guidance and subject matter expertise to PSRC's freight planning work program
- Support maintaining and improving the multimodal freight transportation system to increase reliability, efficiency, and mobility, as called for in *VISION 2050*



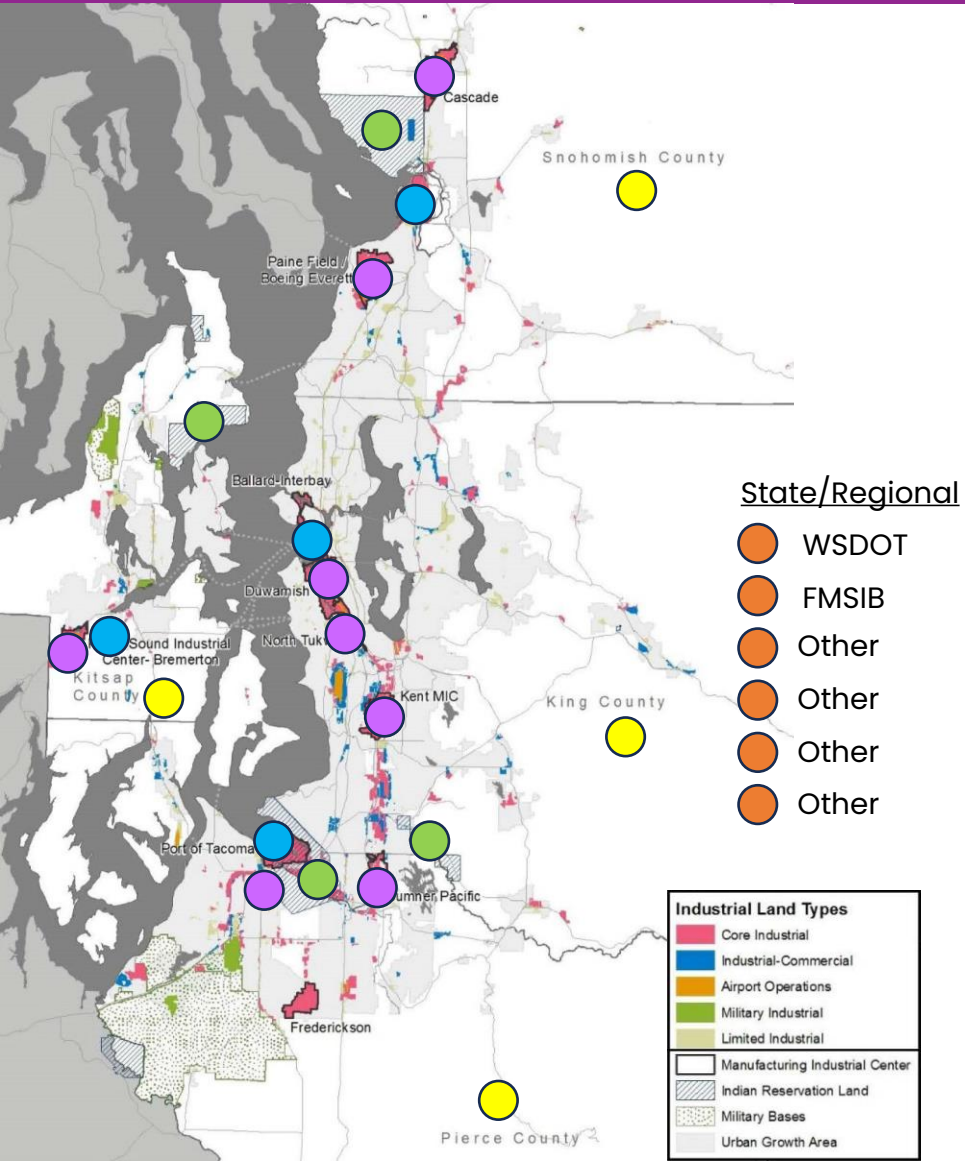


# Operating Procedures Updates

- Membership
  - Smaller, but maintain balanced representation of MICs and industrial areas, as well as geographic balance
- Meeting Cadence
  - Maintain bi-monthly schedule, but cancel if no freight work program related agenda needs
  - For some topics that need broader input, webinars may be appropriate
- Committee Purpose & Operating Procedures
  - Evaluate and refine, maintain focus on PSRC freight work program



# Membership Structure Update



## Unchanged:

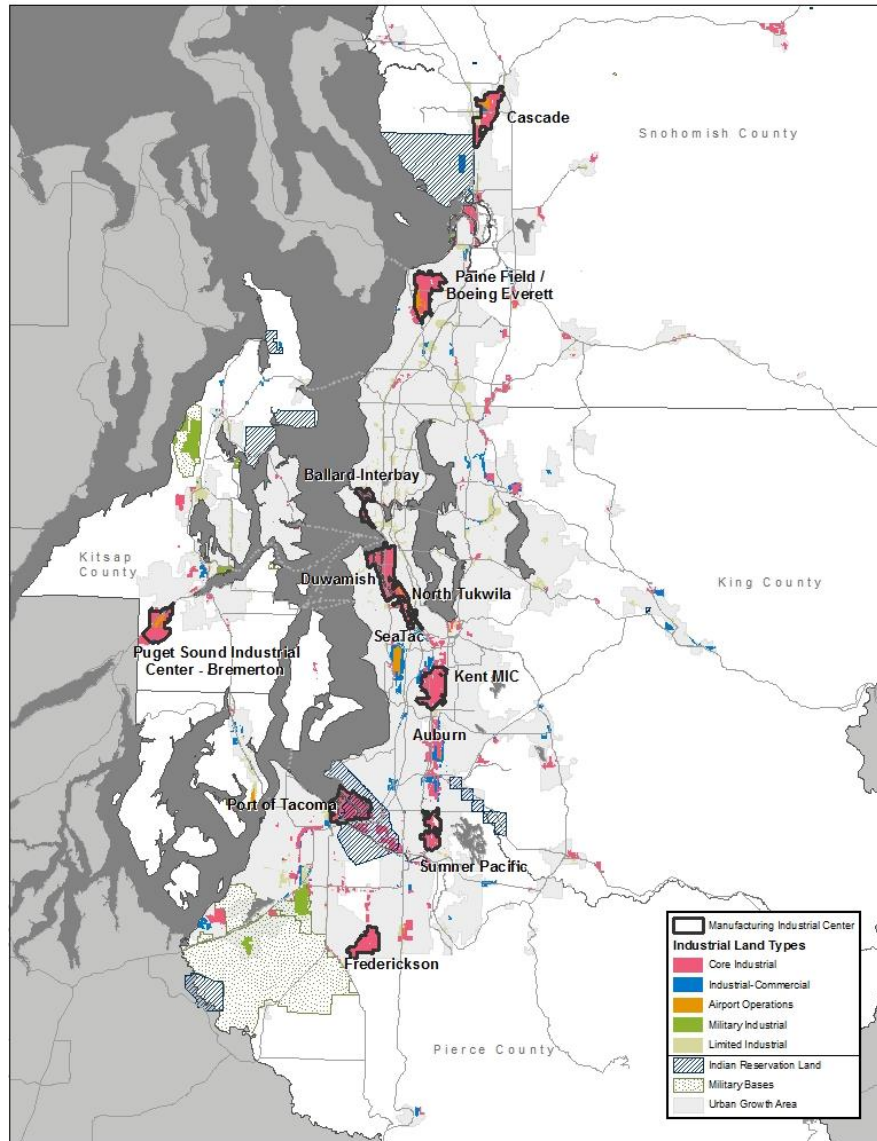
- 4 counties
- 4 ports
- WSDOT & FMSIB
- 4 tribes

## Updated:

- 8 MICs (2 have redundancy)
- 4 non-voting
- Others?



# Membership Structure Update



- MICs + freight intensive areas instead of Industrial Subareas
- Each to be represented by one voting member and one alternate
- Each presumed to be represented by the jurisdiction in which it is located
- Each jurisdiction will have only one voting seat; if more than one located in a jurisdiction, the jurisdiction may appoint an adjacent/interested agency to serve as the second voting representative and alternate
- Jurisdictions are encouraged to coordinate to designate a member and alternate for MIC/freight intensive areas with multiple jurisdictional interests





# Membership Structure Update

Proposed roster based on June discussion:

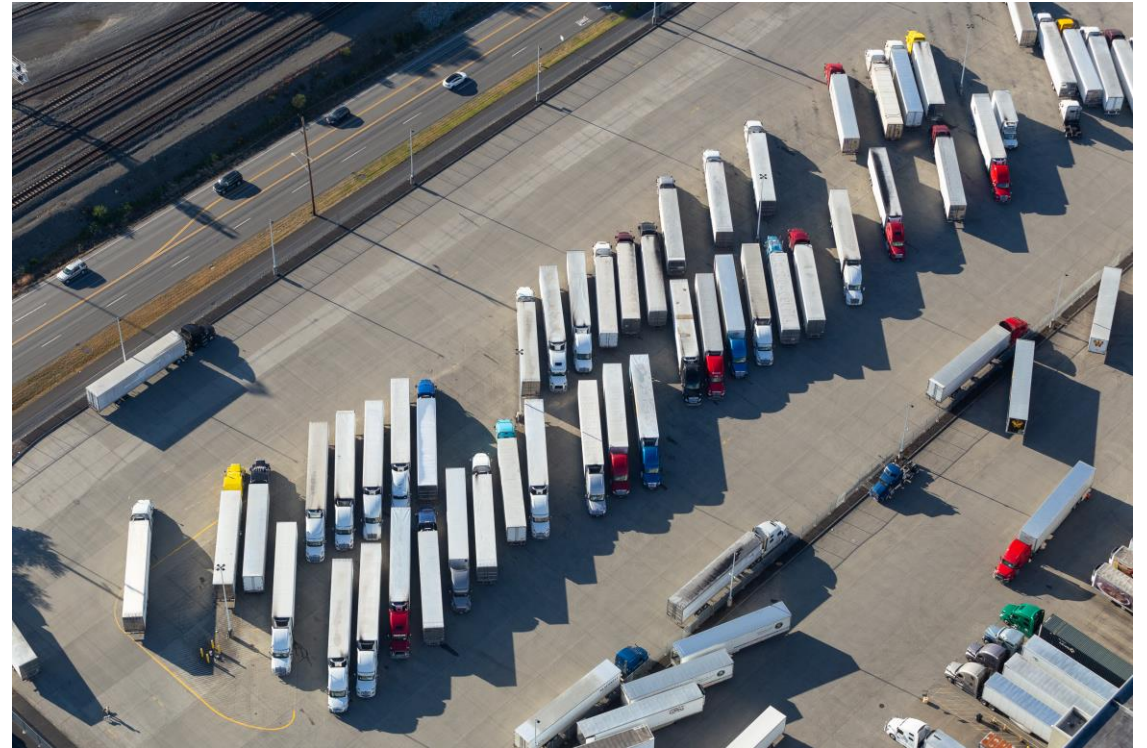
Jurisdictions	✓	Name		✓	Name, Jurisdiction
<b>Counties</b>		<b>Manufacturing Industrial Centers</b>			
King County (1)		John Vander Sluis	Cascade (1)		Jim Kelly, Arlington
		<i>Vacant (Alt.)</i>			<i>Ryan Morrison, Arlington(Alt.)</i>
Kitsap County (1)		David Forte	Paine Field / Boeing Everett (1)		Jesse Hannahs, Marysville
		<i>Melissa Mohr (Alternate)</i>			<i>Tom Hood, Everett (Alt.)</i>
Pierce County (1)		Clint Ritter	PSIC - Bremerton (1)		Chris Dimmitt, Bremerton
		<i>Peter Lewis-Miller (Alt.)</i>			<i>Vicki Grover, Bremerton (Alt.)</i>
Snohomish County (1)		Joseph Bervell	Ballard - Interbay		Chris Eaves, Seattle
		<i>Jay Larson (Alt.)</i>			<i>Joanna Valencia, Seattle (Alt.)</i>
<b>Ports</b>		Duwamish			
Port of Bremerton (1)		Arne Bakker			(represented by Seattle)
		<i>James Goodman (Alt.)</i>			<i>(represented by Seattle) (Alt.)</i>
Port of Everett (1)		Adam LeMieux	North Tukwila (1)		VACANT
		<i>Laura Gurley (Alt.)</i>			<i>Vacant (Alt.)</i>
Port of Seattle (1)		Geri Poor, Chair	Kent (1)		David Paine, Kent
		<i>Kyra Lise (Alt.)</i>			<i>Rob Brown, Kent (Alt.)</i>
Port of Tacoma (1)		Ryan Medlen	Sumner Pacific (1)		Michael Kosa, Sumner
		<i>Deirdre Wilson (Alt.)</i>	Port of Tacoma (1)		<i>Ryan Windish, Sumner (Alt.)</i>
<b>WSDOT (1)</b>					
		Jason Beloso	Frederickson		(represented by Pierce County)
		<i>Wenjuan Zhao (Alt.)</i>			<i>(represented by Pierce Co.) (Alt.)</i>
<b>Freight Mobility Strategic Investment Board (FMSIB) (1)</b>		<b>Freight-Intensive Areas</b>			
		VACANT	SeaTac (1)		Florendo Cabudol, SeaTac
		<i>Vacant (Alt.)</i>			<i>Zack Shields (Alt.)</i>
<b>Tribal Agencies</b>		Auburn (1)			
Muckleshoot Indian Tribe (1)		VACANT			Jacob Sweeting, Auburn
		<i>Vacant (Alt.)</i>			<i>Vacant (Alt.)</i>
		<b>Non-Voting (4)</b>			
Puyallup Tribe (1)		VACANT			Denise Plumb, United Parcel Service (UPS)
		<i>Vacant (Alt.)</i>			Eric Jessup, WSU, Freight Policy Transportation Institute
Suquamish Tribe (1)		VACANT			Jared Faker, Intl. Longshore and Warehouse Union #23
		<i>Vacant (Alt.)</i>			VACANT
Tulalip Tribe (1)		VACANT			
		<i>Vacant (Alt.)</i>			

→ Brennan Kidd, Tacoma  
 Hans Hunger, Puyallup  
 Greg Vigoren, Fife (Alt.)  
 Jeremy Metzler, Edgewood (Alt.)



# Leadership / Decision-making Process

- Instead of Chair / Vice Chair, PSRC staff will facilitate discussions and actions by the committee
- FAC will continue to meet every other month; meetings can be cancelled as appropriate



# RTP Priorities Survey – Results

<i>experience / insight level</i>			Topic (ranked in order of collective experience level)	<i>priority level</i>			
Lot/ Some	No, but	Low Priority		Very high	Somewhat high	Medium	Low
8	5	0	Maintenance & preservation	9	3	1	0
8	4	1	corridors of unique freight importance	9	1	3	0
7	5	1	Freight movement from a supply chain perspective	4	2	7	0
7	4	2	Safety	2	6	3	2
6	4	3	Truck parking	2	5	3	3
4	7	2	Freight trends analysis	2	9	1	1
3	5	5	Port electrification	1	2	4	6
3	5	5	Truck electrification	1	2	3	7
2	7	4	incorporating employment into equity policies	0	2	6	5

