

# Equity Advisory Committee (EAC) Update

PSRC Executive Board

July 25, 2024



*We are leaders in the region to realize equity for all. Diversity, racial equity and inclusion are integrated into how we carry out all our work.*

[psrc.org/equity](https://psrc.org/equity)

# Presentation Overview

- **Regional Equity Strategy**
- **EAC Membership**
- **Transportation Equity Pilot**
- **2024 EAC Calendar**
- **Q&A**



# Regional Equity Strategy

The Strategy includes a suite of resources co-created with the Equity Advisory Committee. It will provide guidance to help members and staff work towards the region's equity goals.



## Community Engagement

- ▶ Equity Advisory Committee
- ▶ Anti-Displacement Organizations Report
- ▶ Equitable Engagement Guidance



## Capacity Building

- ▶ Learning Opportunities
- ▶ Prioritizing Equity
- ▶ Inclusive Procurement
- ▶ Hiring and Retention



## Best Practices

- ▶ Racial Equity Impact Assessment
- ▶ Equity Planning Resources



## Data and Research

- ▶ Equity Tracker
- ▶ Data and Analysis
- ▶ Puget Sound Trends
- ▶ Legacy of Structural Racism Interactive Report

# Regional Equity Strategy

All Resources Located Here:

<https://www.psrc.org/equity>

The Strategy includes a suite of resources co-created with the Equity Advisory Committee. It will provide guidance to help members and staff work towards the region's equity goals.



## Community Engagement

- ▶ Equity Advisory Committee
- ▶ Anti-Displacement Organizations Report (**Available Now!**)
- ▶ Equitable Engagement Guidance (**Available Now!**)



## Capacity Building

- ▶ Learning Opportunities
- ▶ Prioritizing Equity
- ▶ Inclusive Procurement
- ▶ Hiring and Retention



## Best Practices

- ▶ Racial Equity Impact Assessment (**Available Now!**)
- ▶ Equity Planning Resources (**Available Now!**)



## Data and Research

- ▶ Equity Tracker (**Available Now!**)
- ▶ Data and Analysis
- ▶ Puget Sound Trends
- ▶ Legacy of Structural Racism Interactive Report (**Available Now!**)

# Operating Procedures

- Up to **20 members**
- **At least two members** from each of the **four counties**
- **Residents, governmental and community-based organizations** providing lived experiences and perspectives
- **Co-create** products and programs (e.g., **Equity Pilot Program** for FHWA funds)
- **Advise** PSRC boards and committees on policies and programs with an equity lens.

# Proposed 2024 EAC Roster

## Equity Advisory Committee

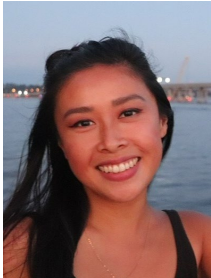
- Center equity in PSRC work
- Involve stakeholders early and often
- Wide range of equity related experiences and expertise



*Keshreeyaji Oswal*



*Ben Sung Henry*



*Annie Tran*



*Debbie Lacy*



*Hien "Elly" Trinh*



*Maria Fergus*



*Lisa Espinosa*



*Megan Espinoza*



*Atrina Martindale*



*Jewel Shepherd-Sampson*



*Shannon Turner*



*Lily Distelhorst*



*Laurenne Sayles*



*Julius Moss*



*Julia Jannon-Shields*



*Lupe Valtierra-Prieto*



*Corey Orvold*



*Thanh Nguyen*



*Michelle Stewart*

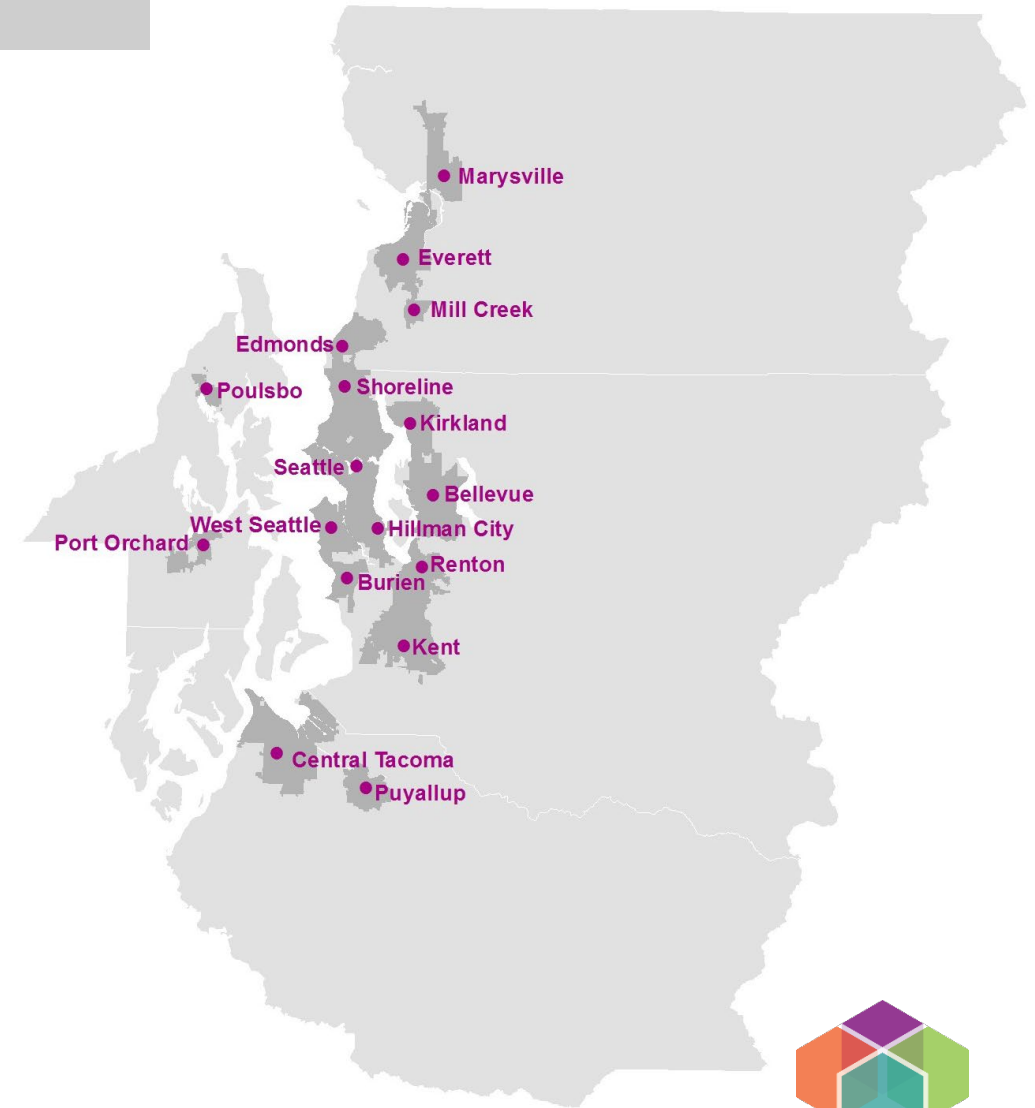


*Mindy Woods*

# Regional Representation

## Counties

- King: **8** members
- Kitsap: **3** members
- Pierce: **4** members
- Snohomish: **5** members



<https://www.psrc.org/committee/equity-advisory-committee>

# New Cohort

## Shifting from selecting new members every year to every 2 years

- Heavy lift for staff
- Stable group for a couple years
  - Continuity is valuable for discussions
- Recruit for 2026 cohort next fall





# Annual Survey

## Member Feedback

- How well is the committee functioning?
  - Average rating: 9 / 10
- Great use of tools for accessibility
- Love the diversity of voices (e.g., identities, experiences, and expertise)
- Staff do a great job of explaining material and take actions to address members' suggestions
- Appreciate the impact our voice is having
- It's an inclusive, welcoming, supportive, and healing space.

# Transportation Equity Pilot

## Overview

- \$6 million set-aside for a Transportation Equity Pilot Program
- Co-designed with EAC
- Evaluate current project selection process
- Adopted revisions for eligibility, criteria, guidance, etc.

## Projects awarded funds

- Federal Way
- Kent
- Pierce Transit
- Seattle
- Snohomish County
- Tacoma
- Tulalip Tribes
- WSDOT





**2024 Topics**

# 2024 EAC Topics

**Growth**



**Transportation**



**Data**



**Other**



# Growth Topics

- **2023 Housing Monitoring Report**
- **VISION 2050 Overview**
- **Comprehensive Plan Review Overview**



**Jan – June 2024**

# Transportation Topics

- **Climate Pollution Reduction Grant**
- **Consolidated Grant**
- **Regional Safety Grant**
- **Regional Transportation Plan**

**Jan – June 2024**



# Data Topics

- **Demographic Profile and Title VI**
- **Equity Tracker**

**Jan – June 2024**



# Other Topics

- **State Legislative Update**
- **Summer Planning Academy (SPA)**

**Jan – June 2024**





# Relationship Building

- **Quarterly Engagement Activities**
- **Wing Luke Museum**



# Topics for 2024: July – Dec

- **Regional Safety Grant**
- **Household Travel Survey**
- **Tribal Engagement**
- **Legislative Update**
- **Demographic Profile**



# Thank You!

Debbie Lacy, King County  
EAC Co-chair

Maria Fergus, Kitsap County  
EAC Co-chair



Puget Sound Regional Council