

2024 Project Selection Recommendations

Executive Board
July 25, 2024



Puget Sound Regional Council



We are leaders in the region to realize equity for all. Diversity, racial equity and inclusion are integrated into how we carry out all our work.

psrc.org/equity

Today's Presentation



- Project Selection Process Overview
- Project Outcomes and Highlights
- Next Steps
- Recommended Action



Project Selection Overview

Every two years, PSRC distributes federal transportation funds through four processes...

Federal Transit Administration (FTA)

Earned Share Funding

Equity Formula Funding

Federal Highway Administration (FHWA)

Regional Competition

Four Countywide
Competitions



Project Selection Overview

Guided by the **Policy Framework for PSRC's Federal Funds**

- Based on VISION 2050 policies
- Provides Board direction for project selection
- Provides detailed policies and procedures for conducting FTA and FHWA processes
- Adopted in January 2024



Project Selection Overview

FTA processes include:

- **Earned Share Distribution**, based on actual service and operations
 - Applied to three Urbanized Areas (UZA) – Bremerton, Marysville, and Seattle-Tacoma-Everett
- **Equity Distribution**, supports Equity Focus Areas through improved transit services and access
 - Applied within the Seattle-Tacoma-Everett UZA (14% of total)



Project Selection Overview

FHWA processes address

- Support for Centers
 - Regional competition focuses on regional centers
 - Countywide competitions focus on regional and locally designated centers
- Mobility and Accessibility
 - Equity
 - Safety

Enhanced in 2024
- Air Quality / Climate Change



Project Selection Overview

136 projects recommended for total of ~\$712 million in awards

FTA	FHWA
Earned Share Formula ~\$409 million	Regional Competition ~\$96 million
Equity Formula ~\$64 million	Four Countywide Competitions ~\$143 million



FTA Funding Recommendations



28 projects recommended for **Earned Share Formula** funds, including

- Vehicle purchases
- Passenger amenities
- Fast Ferry docking facility
- Transit infrastructure (e.g., trolley poles/switches)
- Vehicle and transit facility maintenance



FTA Funding Recommendations

7 projects recommended for **Equity Formula** funds, including

- Americans with Disabilities Act (ADA) improvements to ferry facilities
- Equity-focused bus stop rehabilitation
- Vehicle and transit facility maintenance
- Vehicle purchases
- RapidRide expansion



Equity Formula Distribution

- Focused and intentional distribution to support equity focus areas through expanded or improved services and access
 - Per recently adopted policies, existing services or routine operations may be applicable under certain conditions
 - All projects receiving Equity Formula funds respond to PSRC's regional Equity Criteria and comply with adopted project tracking and programming policies
- *PSRC reviewed each project for consistency and compliance with the purpose and intent of the Equity Formula distribution*

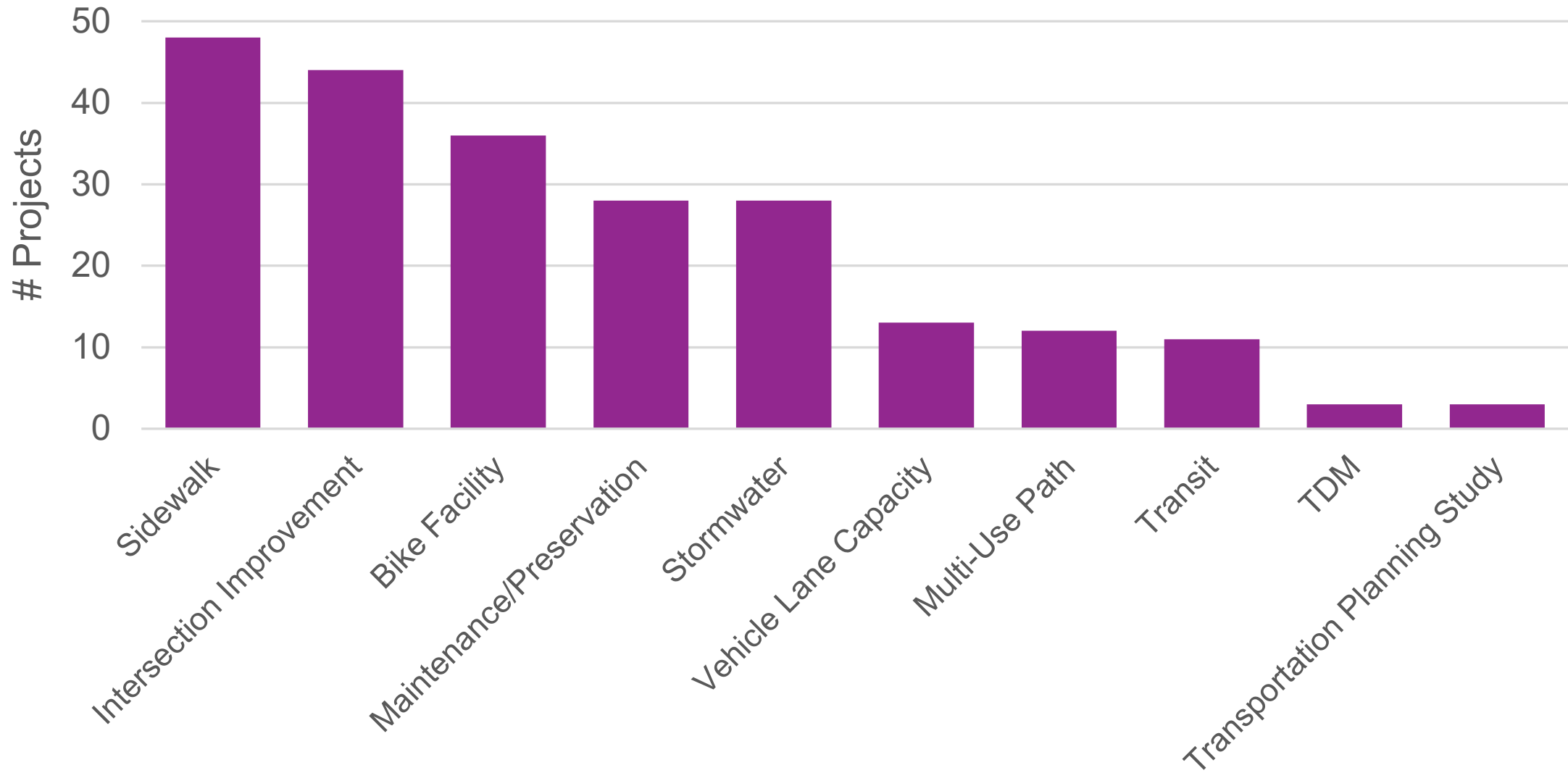


FHWA Funding Recommendations

	Regional Competition	Countywide Competitions
Requests	30 projects ~\$140 million	104 projects ~\$176 million
Recommended Awards	18 projects ~\$96 million	83 projects ~143 million



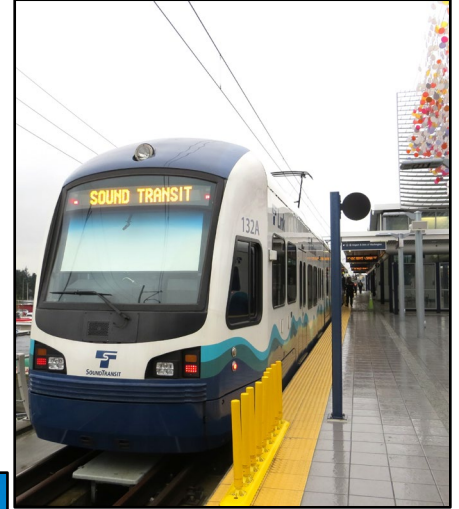
Outcomes of Recommended FHWA Projects



FHWA Project Outcomes - Transit

Projects include:

- Expanding High-Capacity Transit
- Transit access improvements
- Zero-Emission vehicle purchases
- Security Upgrades



Source: Community Transit



FHWA Project Outcomes – Freight

Projects include:

- Maintenance / preservation along designated freight routes
- Improving flow / reducing conflicts along designated freight routes
- Connecting to MICs / port facilities



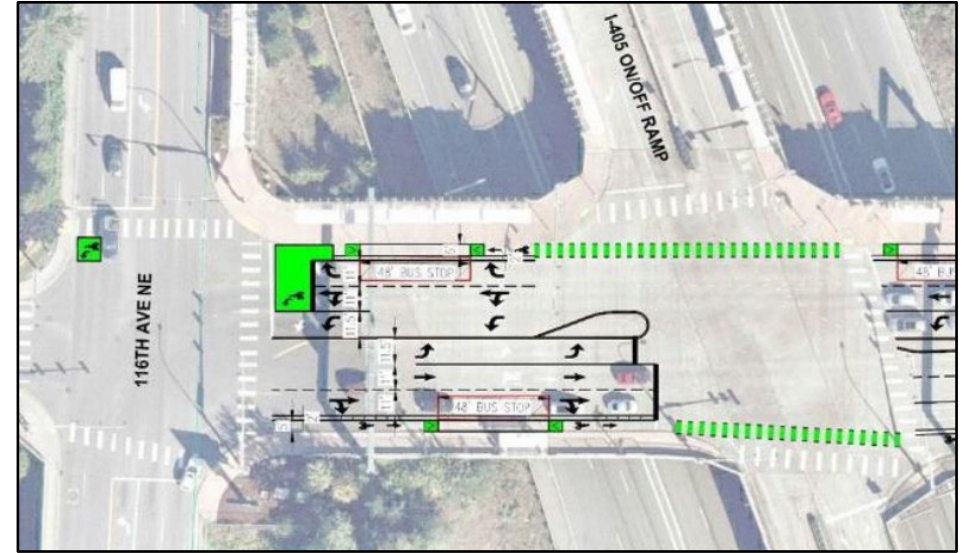
Source: City of Fife



FHWA Project Outcomes – Pedestrian & Bicycle

Projects include:

- New walkways
- Buffered bicycle lanes
- Improving safe crossings



Source: City of Kirkland



Source: FHWA



Climate Highlights

Projects supporting emission reductions:

- Eliminate trips or shift away from single occupant vehicles;
- Reduce vehicle miles traveled;
- Improve traffic flow, particularly for freight vehicles;
- Convert to cleaner vehicles

Examples of recommended projects:

- *Transit expansions*
- *Transportation demand management*
- *Zero emission vehicles*
- *Pedestrian and bicycle facilities*
- *Signalization and intersection improvements*



Safety Highlights

Safety Criteria strengthened in 2024:

- Updated safety criteria & language to more concretely tie to the Safe System Approach and FHWA proven safety countermeasures
- Incorporated a commitment to working towards planning and implementation actions under a Safe System Approach
- Increased weight of safety criteria



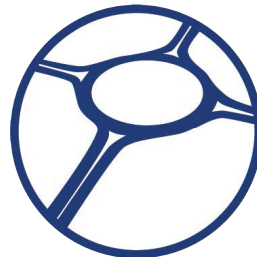
Source: USDOT




Safety Highlights

FHWA Proven Safety Countermeasures

- All applicable projects include at least one
- 70% include three or more
- 20% include five or more



MAKING OUR ROADS SAFER | One Countermeasure at a Time



The FHWA has identified and is promoting widespread use of a set of 28 Proven Safety Countermeasures that can offer significant, measurable impacts as part of any agency's data-driven, systemic approach to improving safety. These strategies are designed to enhance safety on all kinds of roads—from rural to urban, from high-volume freeways to less traveled two-lane State and county roads, from signalized crossings to horizontal curves, and everything in between. Each countermeasure addresses **speed management, intersections, roadway departures, or pedestrians/bicyclists**—along with crosscutting strategies that address all four safety focus areas.

Which Proven Safety Countermeasures Will You Use? | For more information on this and other FHWA Proven Safety Countermeasures, please visit <https://safety.fhwa.dot.gov/provencountermeasures>.

U.S. Department of Transportation
Federal Highway Administration

ZERO IS OUR GOAL
A SAFE SYSTEM IS HOW WE GET THERE
<https://safety.fhwa.dot.gov/>

Source: FHWA



Safety Highlights

FHWA Proven Safety Countermeasures

- Wide selection included in recommended projects
- Ped/Bike countermeasures most common
 - Walkways
 - Bike lanes
 - Crossing improvements
- Reduced left-turn conflict treatments also prominently featured
 - Dedicated turn lanes
 - Roundabouts



Key Equity Related Sections

- Identification of the **existing disparities** for the EFAs and most marginalized
- Description of public **outreach** process reflected in PSRC's **Equitable Engagement Guidance**
- Identification of **anti-displacement strategies** reflected in the Housing Opportunities by Place (HOP) tool



Equity Focus Areas

Based on foundational work in

VISION 2050 & the Regional Transportation Plan (RTP)

Six demographics used to measure and track disparities

**People of
Color**

**People with
Low Incomes**

**People with
Disabilities**

**Youth
(Ages 5-17)**

**Older Adults
(Age 65+)**

**People with
limited
English
proficiency
(LEP)**

Equity Focus Areas (EFAs)

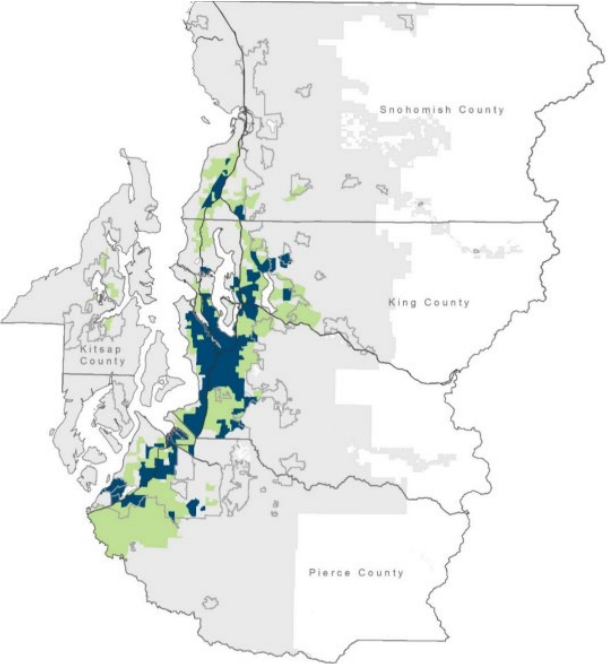
have higher proportions of members of these groups



Equity Focus Areas

Every corner of our region has at least one of these EFAs

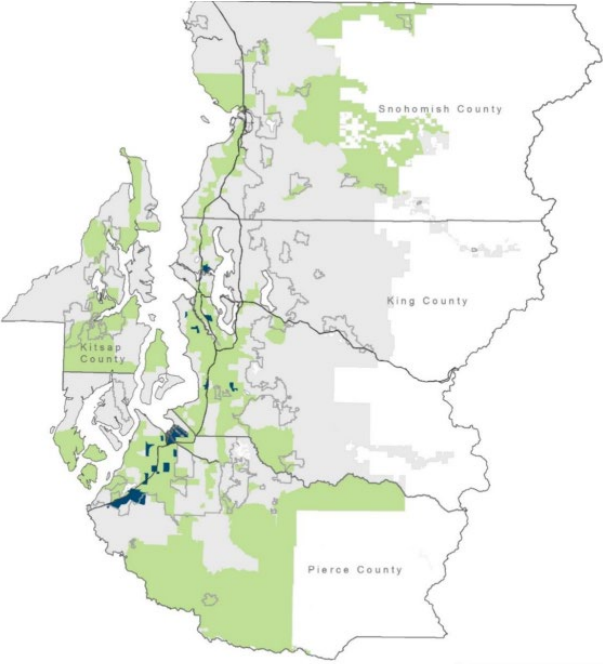
People of Color, 2019



People of Color
Regional Average: 35.9%

- Above 50% Threshold
- Above Regional Average
- Below Thresholds
- Urban Growth Area
- Forest Lands

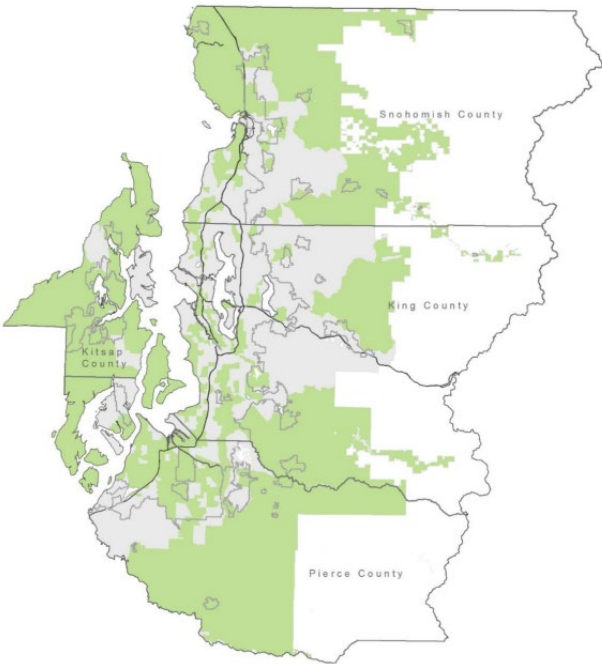
People with Low Incomes, 2019



People with Low Incomes
Regional Average: 20.7%

- Above 50% Threshold
- Above Regional Average
- Below Thresholds
- Urban Growth Area
- Forest Lands

People with Disabilities, 2019



People with Disabilities
Regional Average: 11.0%

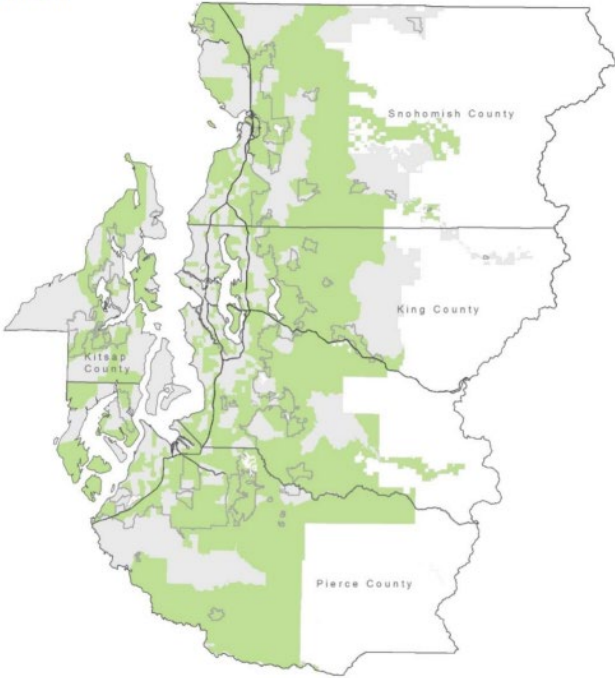
- Above Regional Average
- Below Regional Average
- Urban Growth Area
- Forest Lands



Equity Focus Areas

How well you're serving one or more of these communities

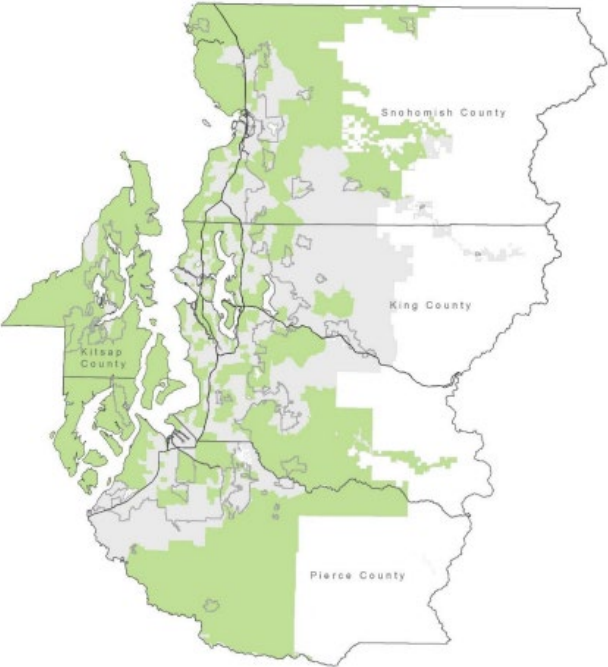
Youth, 2019



Youth (Ages 5-17)
Regional Average: 15.4%

- Above Regional Average
- Below Threshold
- Urban Growth Area
- Forest Lands

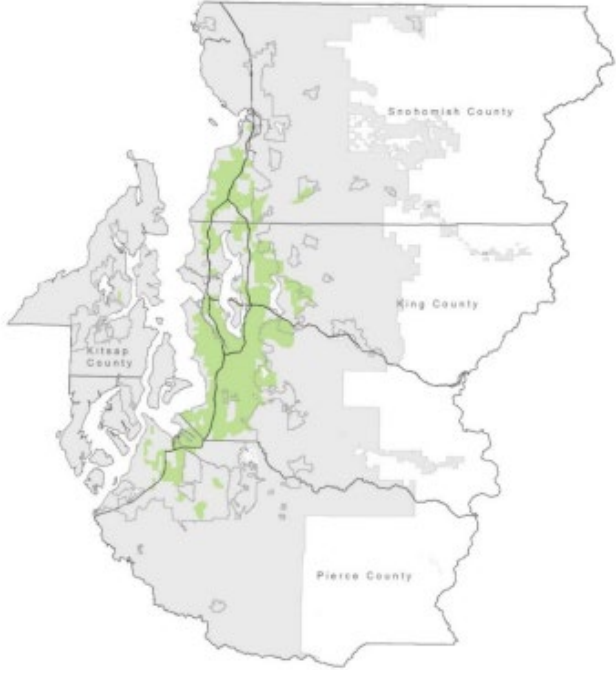
Older Adults, 2019



Older Adults (Age 65+)
Regional Average: 13.4%

- Above Regional Average
- Below Threshold
- Urban Growth Area
- Forest Lands

People with LEP, 2019



People with LEP
Regional Average: 8.5%

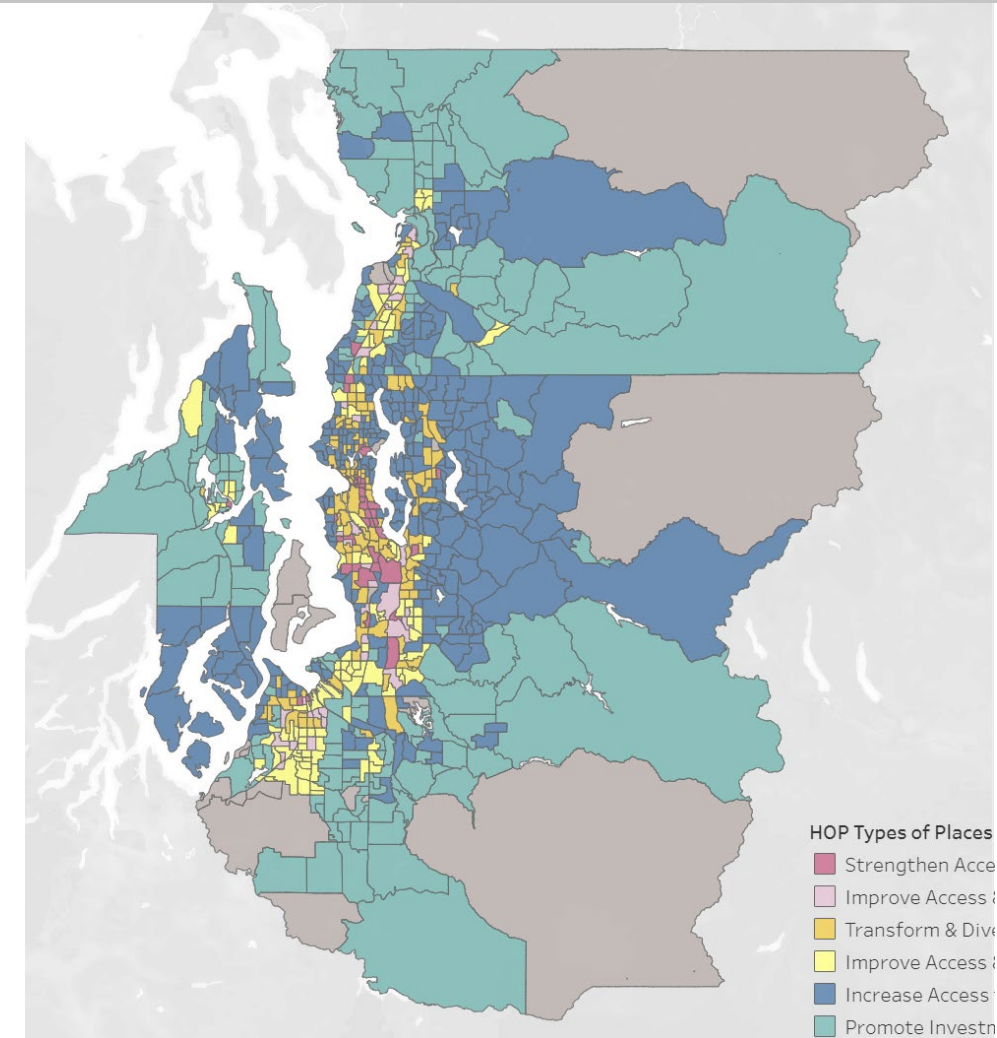
- Above Regional Average
- Below Threshold
- Urban Growth Area
- Forest Lands



Displacement

Housing Opportunities by Place (HOP) is a PSRC tool that uses typologies to classify **anti-displacement strategies** that effectively address housing access and affordability.

Each Census Tract in the region is categorized into one of six **typologies**.



<https://www.psrc.org/our-work/housing-typology>



High Scoring Responses

Disparities

- Identified a disparity experienced by an EFA and articulated how the project will reduce this disparity.

Outreach

- Used outreach strategies from PSRCs Equitable Engagement Guidance and clearly addressed a need identified by EFAs.

Displacement

- Identified a typology, and policies were aligned with their assigned typology.



Missed Opportunities

Disparities

- Described **benefits without** noting if there were **existing disparities**.
- Failed to include **local data** related to a **disparity**.
- Failed to articulate how a **gap in service** specifically **impacts an EFA**.



Missed Opportunities

Outreach

- Limited response to plans for future outreach.
- Failed to articulate communities that Community Based Organizations (CBOs) or committees represented.
- Failed to detail how feedback shaped the project.



Missed Opportunities

Displacement

- Did not use the **HOP** tool.
- Focused on stating how the **project** will **not lead** to **displacement**.
- Failed to identify **local policies**, even when they exist.
- Simply shared an **attachment without** noting any **policies**.



Key Takeaways

- Low scores do not reflect something fundamentally wrong with projects.
- Nothing fundamentally wrong with the process.
 - Saw wide range in the quality of responses, suggesting variance in understanding.
- Seems as if some sponsors did not participate in Equity Pilot, attending our trainings, reading guidance, or using our examples.
 - Makes it challenging to get a full sense of how they are serving communities.
 - Pertinent information is being left out and points are being left on the table.



Next Steps

- Project sponsors can improve scores overall if take advantage of PSRC resources.
 - *Need more sponsors to attend trainings.*
- PSRC will debrief with sponsors to identify barriers and points of confusion.
 - *Continue to improve guidance documents.*
- Significant changes in 2024; staff recommend allowing more time for these changes to take hold.
 - *Takes time for sponsors to get familiar with a process.*
Anticipate seeing better scores moving forward.



Schedule



- July 2024 – Board action on project recommendations
- September 2024 – Public comment on Draft 2025–2028 Regional Transportation Improvement Program (TIP)
- October 2024 – Board adoption of 2025–2028 Regional TIP
- January 2025 – Federal approval of TIP



Recommended Action

The Executive Board is asked to:

Approve the projects recommended for PSRC's FHWA and FTA funds, as identified in Attachments A through D, including the prioritized contingency lists of projects should additional funds become available prior to the next project selection process.



Thank You!

Charles Patton
cpatton@psrc.org
(206) 971-3285

Doug Cox
dcox@psrc.org
(206) 971-3050

Jennifer Barnes
jbarnes@psrc.org
(206) 389-2876



Puget Sound Regional Council