

# Title VI Demographic Profile

Regional Staff Committee

July 18, 2024



Puget Sound Regional Council



*We are leaders in the region to realize equity for all. Diversity, racial equity and inclusion are integrated into how we carry out all our work.*

[psrc.org/equity](https://psrc.org/equity)



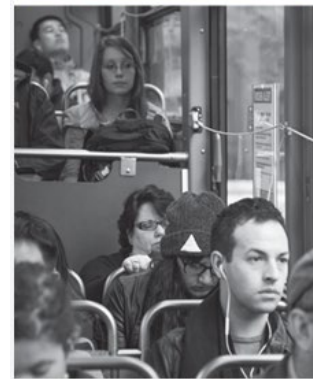
# Overview

What is the Title VI Demographic Profile?

2021 Demographic Profile – Content

2024 Demographic Profile – Scope of Work

Next Steps





# Title VI of the Civil Rights Act of 1964



Title VI of the Civil Rights Act of 1964 states that “No person in the United States shall, on the ground of race, color, or national origin, be excluded from participation in, be denied the benefits of, or be subjected to discrimination **under any program or activity receiving Federal financial assistance.**”



# Title VI and Environmental Justice

## Executive Order 12898 (Clinton, 1994)

- Directs federal agencies to **identify and address “disproportionately high and adverse human health and environmental effects of its programs, policies, and activities on minority populations and low-income populations”**

## Executive Order 13166 (Clinton, 2000)

- Directs federal agencies to **improve access to services for persons with limited English proficiency**



# Related Civil Rights Statutes

## Additional protected classes:

- **Age** (Title 42 U.S. Code §6102)
- **Sex** (Title 23 U.S. Code §324)
- **Disability** (Americans with Disabilities Act of 1990, Title 42 U.S. Code §§12101-12213)



# Purpose of Demographic Profile

Compile demographic information for region for purpose of:

- Informing environmental justice and equity **analyses of disproportionate impacts**
- Supporting **effective public outreach and engagement** of environmental justice and other equity populations

# Equity Focus Areas (EFAs)

*Based on foundational work in*

## VISION 2050 & the Regional Transportation Plan (RTP)

Six demographics used to measure and track disparities

People of  
Color

People with  
Low Incomes

People with  
Disabilities

Youth  
(Ages 5-17)

Older Adults  
(Age 65+)

People with  
Limited English  
Proficiency  
(LEP)

Equity Focus Areas (EFAs)

have higher proportions of members of these groups



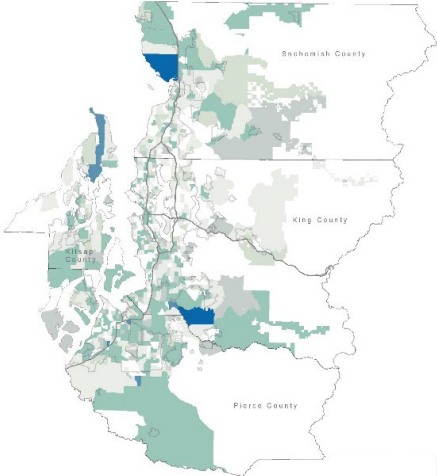
# 2021 Profile - Populations and Characteristics

Dimensions	Equity Focus Areas	Additional Characteristics
Race & Ethnicity	-People of color	-Race and Hispanic/Latinx origin detail -Asian sub-population detail
Income	-People with low incomes <200% poverty	-Income <100% and <150% poverty -Median household income
Language	-People with limited English proficiency	-Common languages spoken
Age	-Youth (age <18) -Older adults (age 65+)	
Ability	-People with a disability	
Sex		-Women
Household Type		-Single parent households
Vehicle Ownership		-Zero-vehicle households

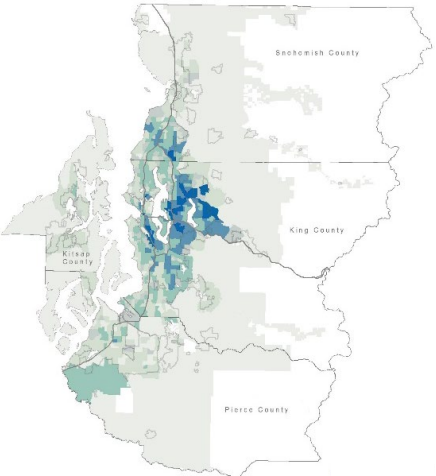


# Settlement Patterns by Race and Ethnicity

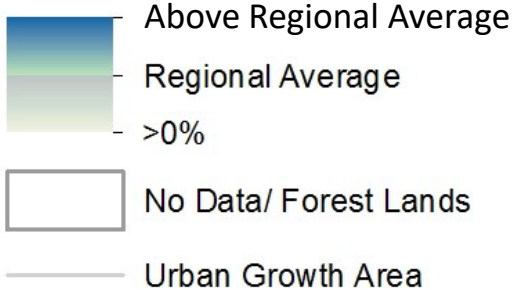
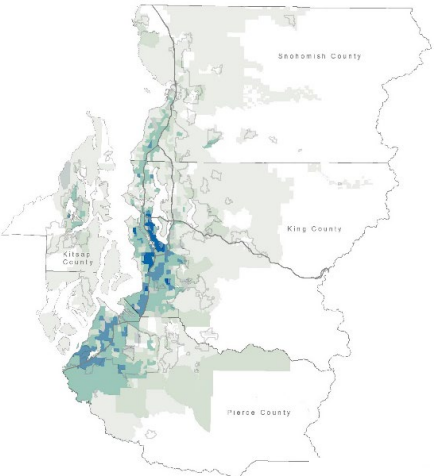
American Indian/Alaska Native



Asian

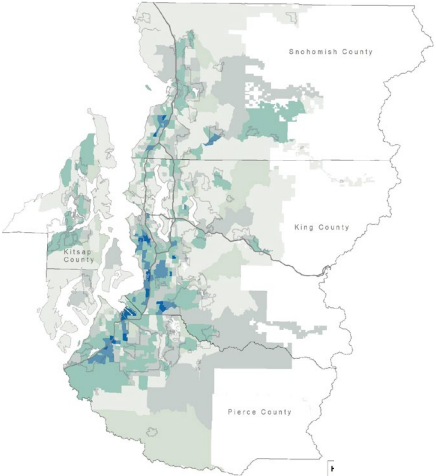


Black

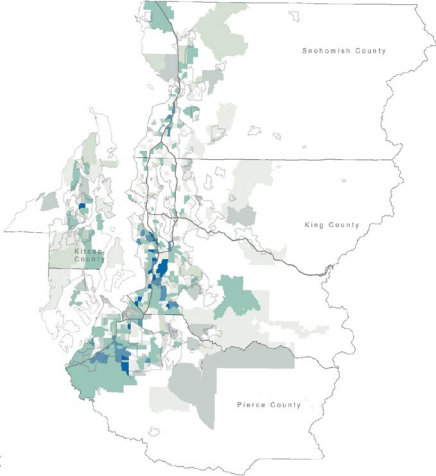


Source: American Community Survey, 2019 5-Year Estimates

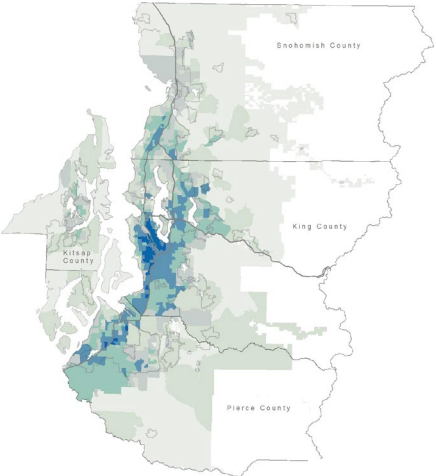
Hispanic/Latinx



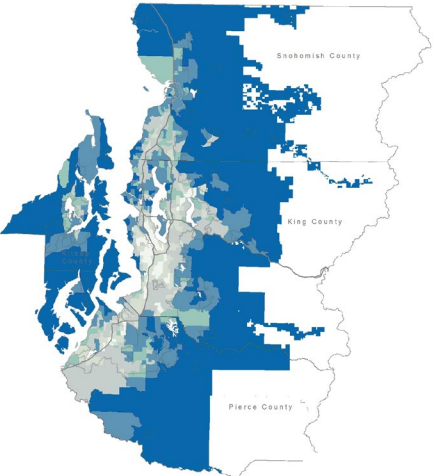
Native Hawaiian/Pacific Islander



People of Color

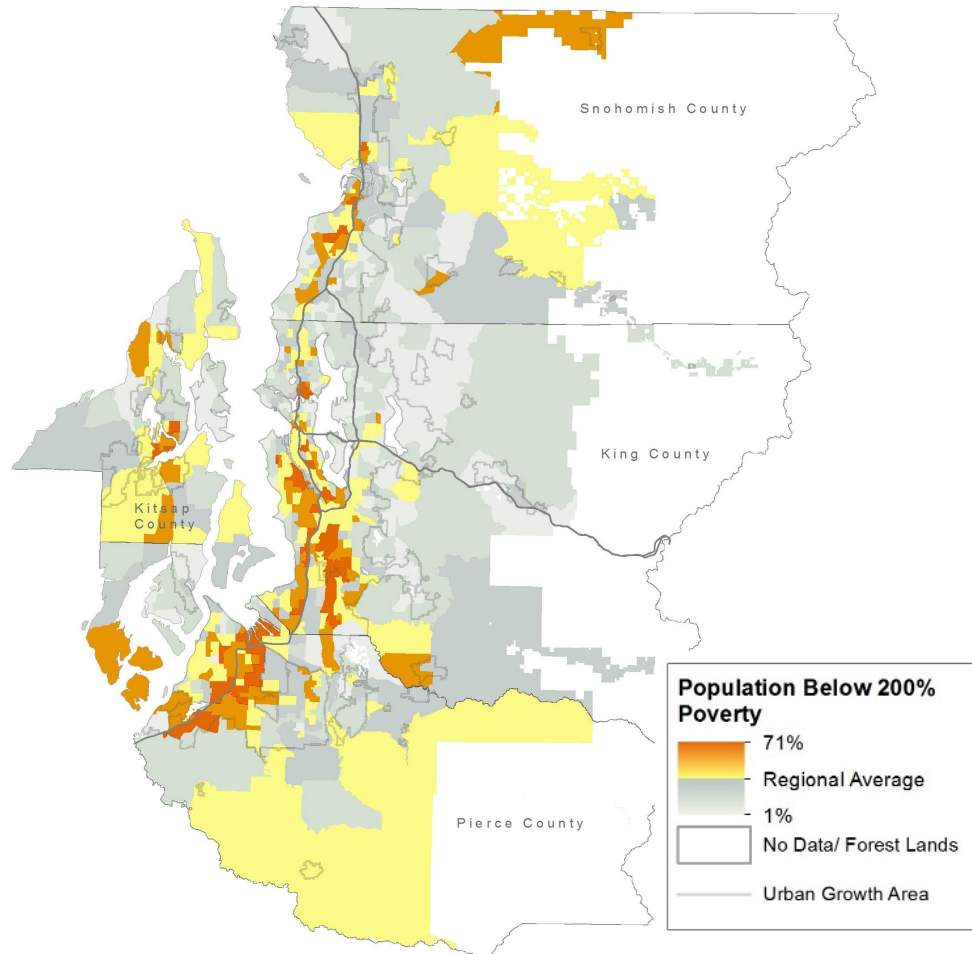


White Non-Hispanic

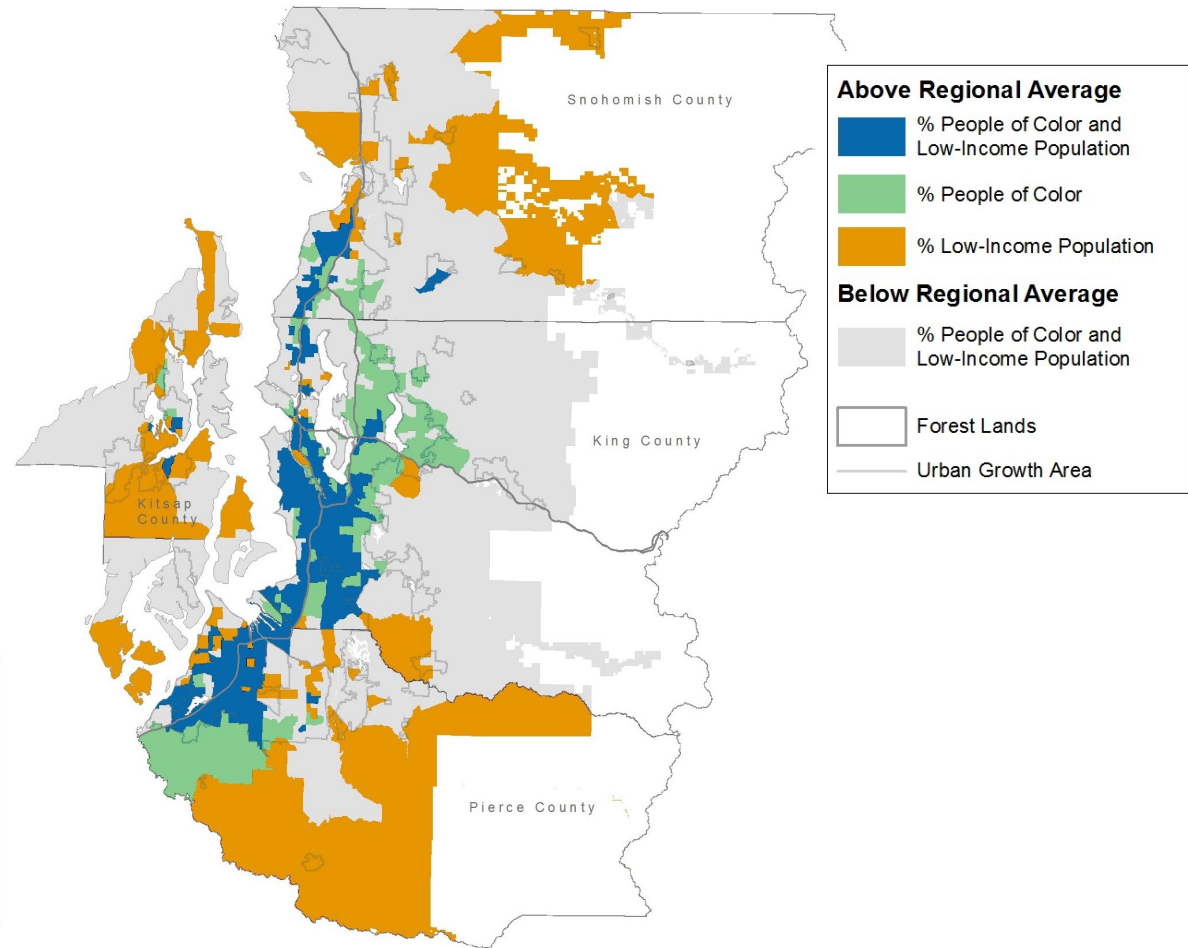


# Low-Income Population

## Population Below 200% Poverty



## Intersection with People of Color

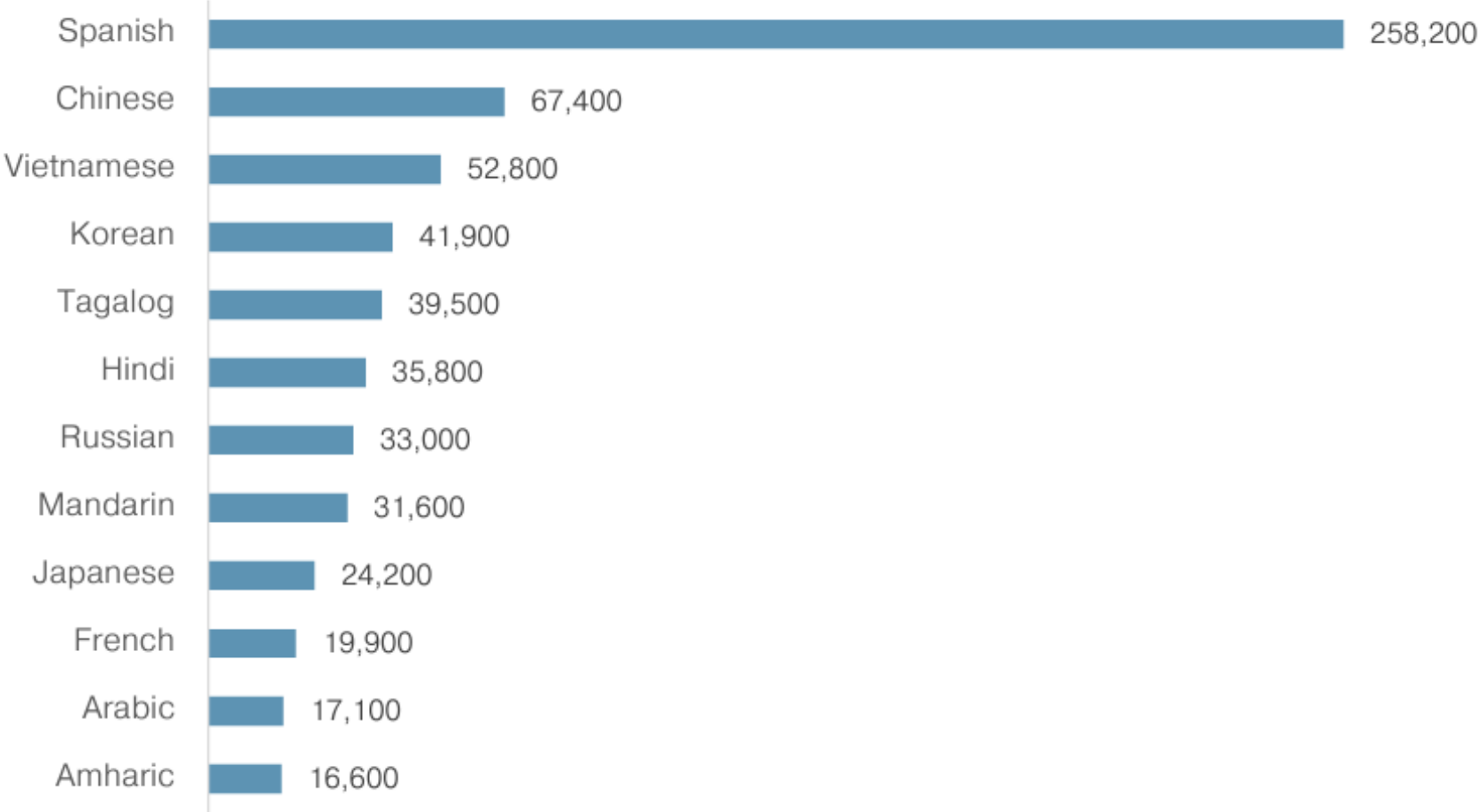


Source: American Community Survey, 2019 5-Year Estimates



# Common Languages

## Common Languages Spoken Other than English, Central Puget Sound



Source: American Community Survey, 2019 1-Year Public Use Microdata Sample

# 2024 Profile – Scope of Work

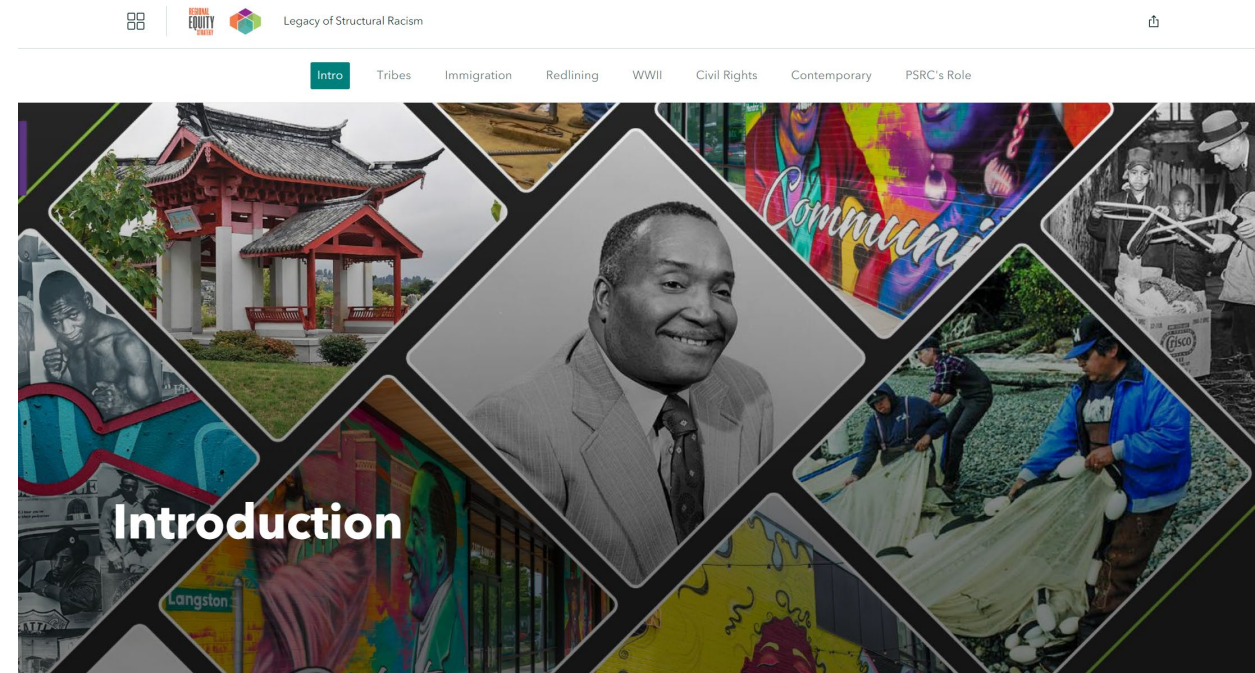
Revisit federal statutes and guidance

Review best practices at peer metropolitan planning organizations (MPOs)

Data development and analysis

Final products

- PDF report for federal partners
- Interactive StoryMap report





# Guiding Questions for EAC Subcommittee

Scope and role of demographic profile

Technical and data refinements

2024 Demographic Profile interactive StoryMap report

# Race and Hispanic/Latinx Origin Reporting

## Overlapping Categories

	Not Hispanic or Latinx	Hispanic or Latinx
Race	American Indian and Alaska Native	
	Asian	
	Black or African American	
	Native Hawaiian and Pacific Islander	
	White	
	Some other race	
	Two or more races	



## Non-Overlapping Categories

Race and/or Ethnicity
American Indian and Alaska Native, non-Hispanic
Asian, non-Hispanic
Black or African American, non-Hispanic
Hispanic or Latinx
Native Hawaiian and Pacific Islander, non-Hispanic
White, non-Hispanic
Some other race, non-Hispanic
Two or more races, non-Hispanic





# Next Steps

## Project Timeline

Spring/  
Summer 2024

Update Title VI  
Demographic  
Profile

October 2024

Submit  
updated profile  
to federal  
funding  
partners

Early 2025

Publish  
interactive  
StoryMap  
report







# Thank You!

Carol Naito

Program Manager – Data Applications

[cnaito@psrc.org](mailto:cnaito@psrc.org)



Puget Sound Regional Council