

Open Space Trends

July 18, 2024



Puget Sound Regional Council



We are leaders in the region to realize equity for all. Diversity, racial equity and inclusion are integrated into how we carry out all our work.

psrc.org/equity

Overview



Open Space Trends

- Erika Harris, PSRC

Protecting mature trees while adding housing

- David Moehring, former Seattle Urban Forestry Commissioner
- Mike Carey, City of Tacoma

Tree Equity Collaborative

- Michael Liang, WA Department of Natural Resources



VISION 2050 Supports Open Space and Tree Canopy

MPP-En-9: Enhance urban tree canopy to support community, environmental and economic health

MPP-En-12: Conserve and enhance open space and update the Regional Open Space Conservation Plan

MPP-En-15: Provide walkable access to parks and trails and prioritize historically underserved communities

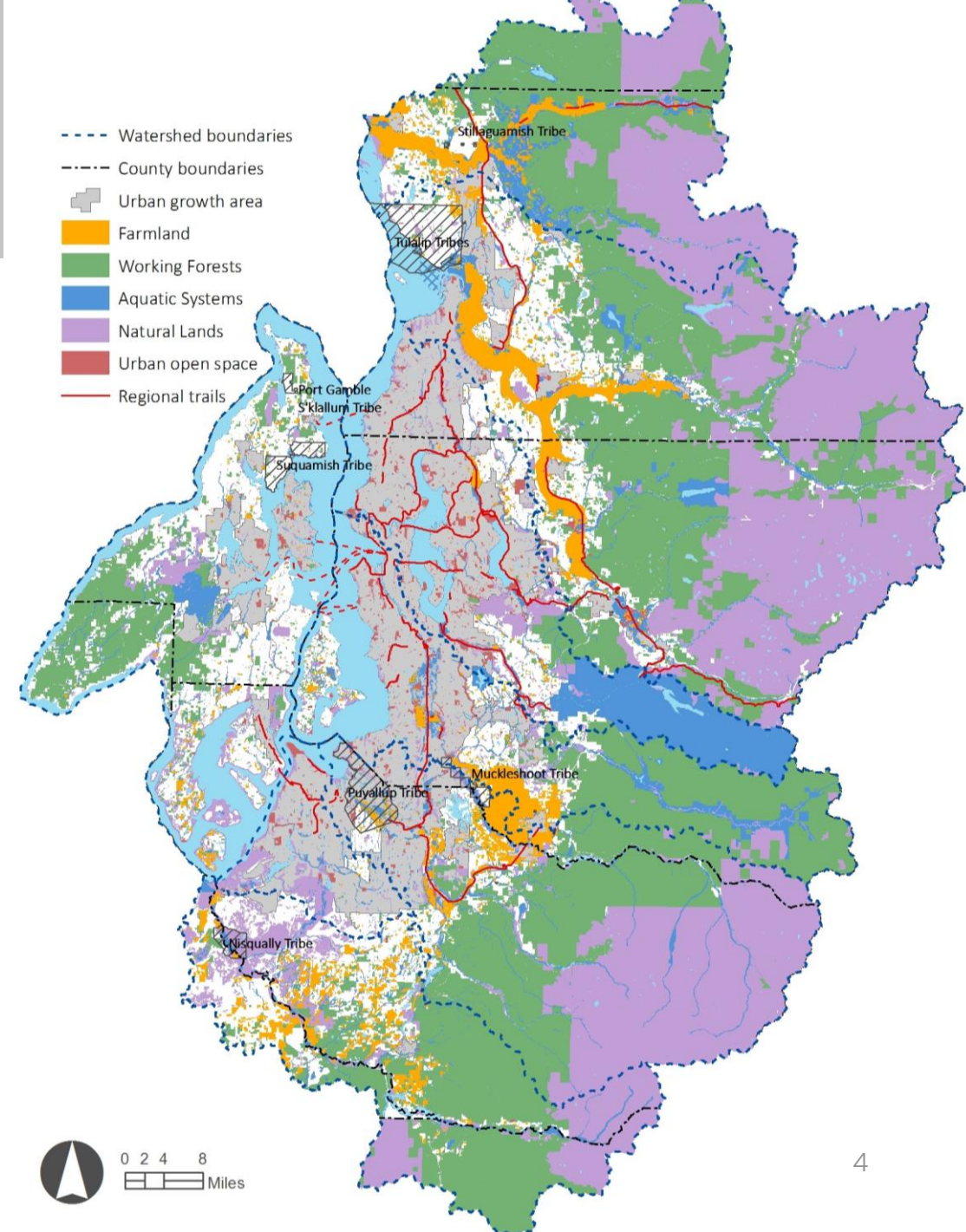


Regional Open Space Network

6 categories of open space:

- Farmland
- Working forests
- Aquatic systems
- Natural lands
- Urban open space
- Regional trails

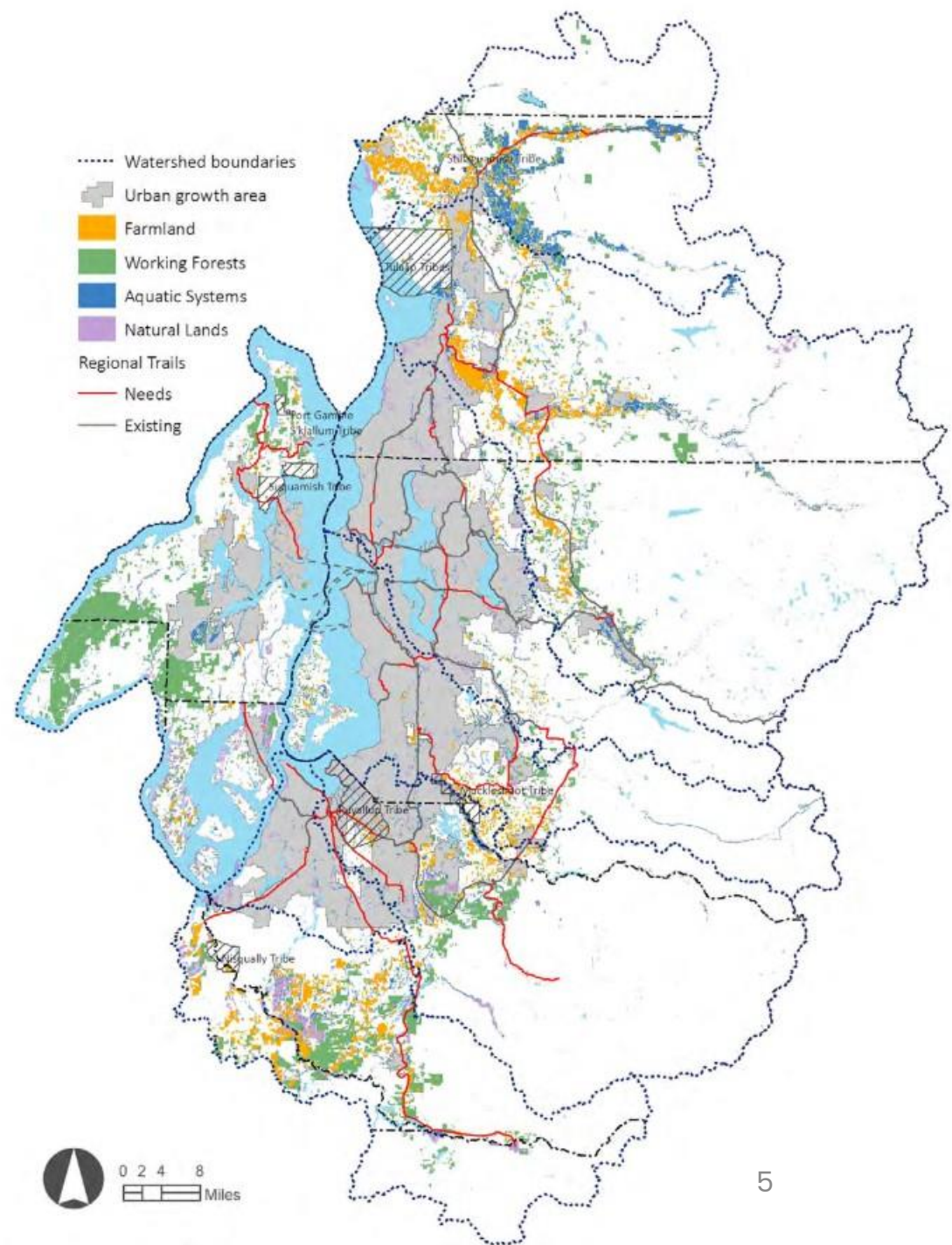
[Regional Open Space Conservation Plan](#)



Conservation Needs

Conservation Needs in the Regional Open Space Network:

- Farmland: 104,000 acres
- Working Forests: 183,200 acres
- Aquatic Systems: 93,700 acres
- Natural Lands: 81,700 acres
- Regional Trails: 300 miles
- Highest priority urban open spaces: 47 parks

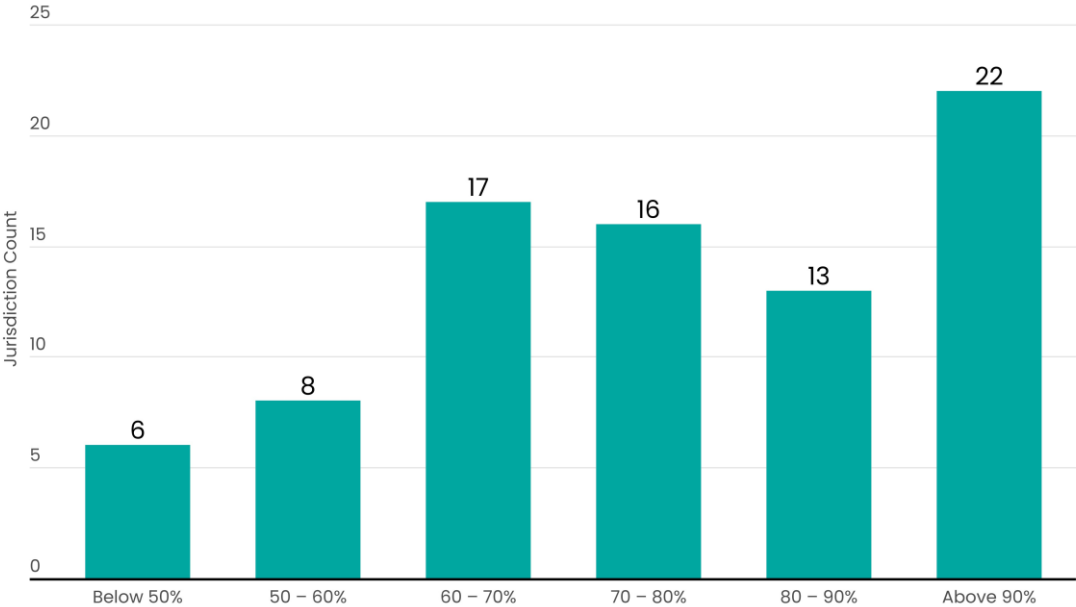


Urban Open Space

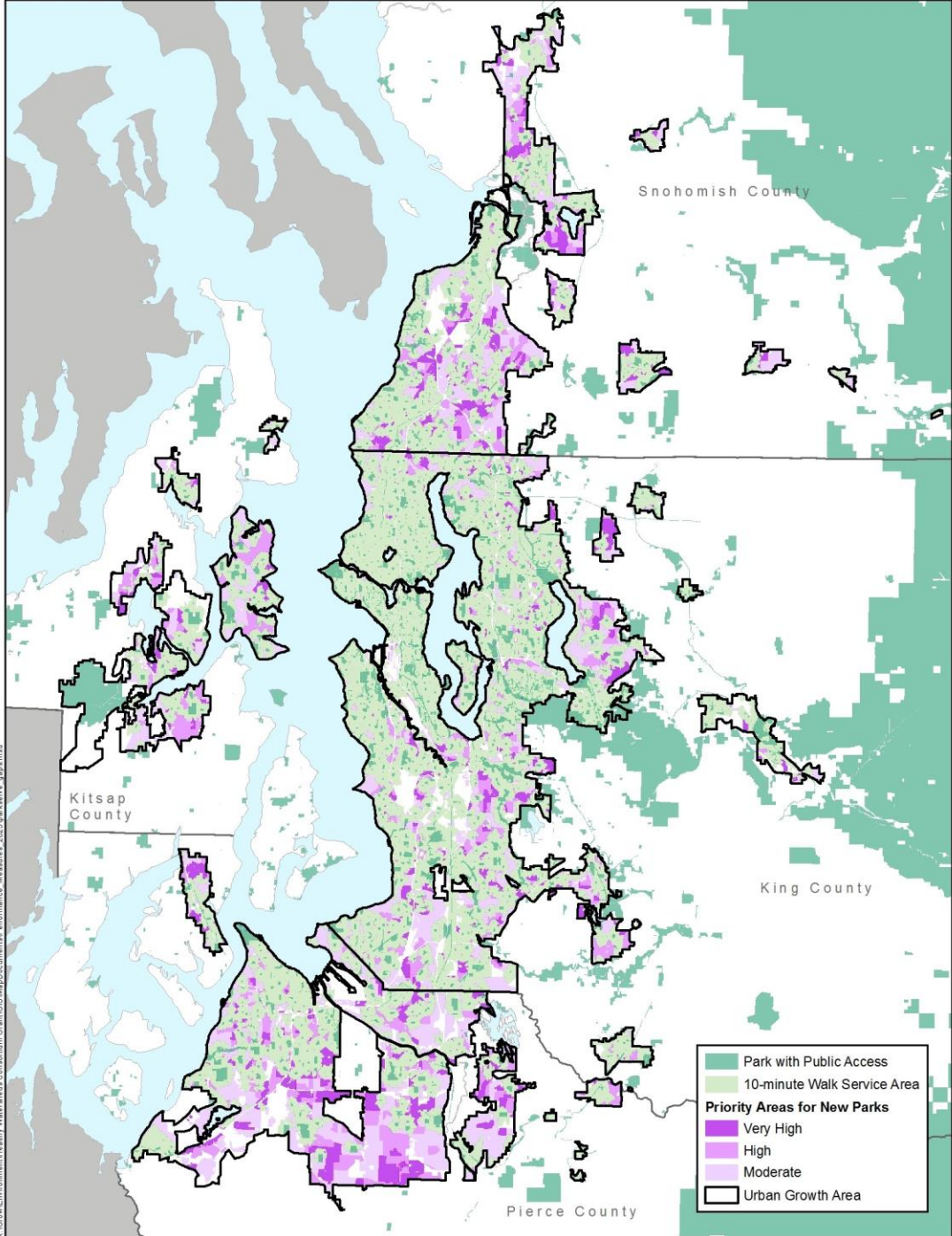
Goal: By 2050, all urban residents within a 10-minute walk of a park.

ParkServe: urban population within a 10-minute walk of a park: 72%

Cities by Percentage of Population Within a 10-Minute Walk of a Park



Data source: ParkServe, Trust for Public Land

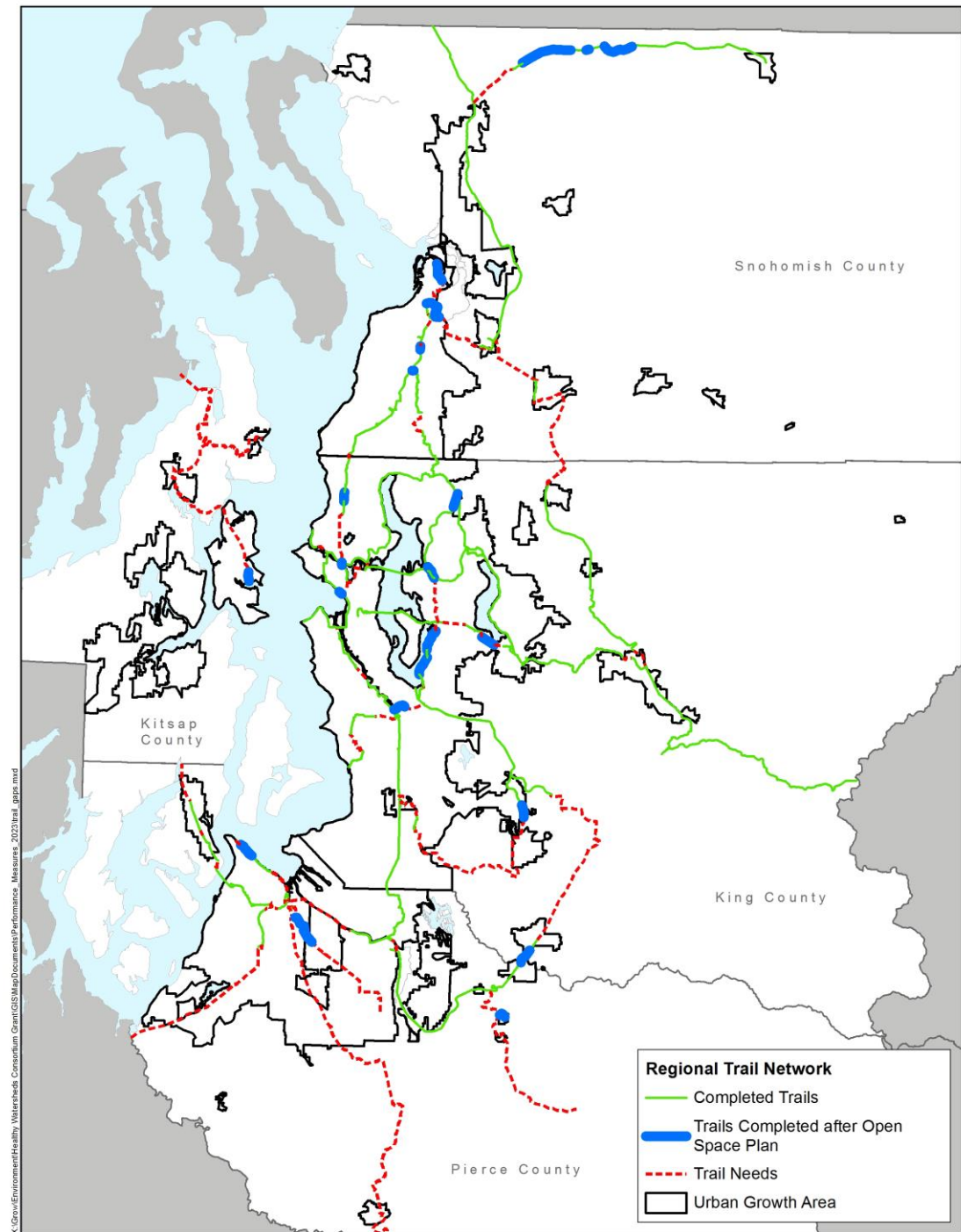


Regional Trails

Goal: By 2050, add 300 miles to the regional trail network

Since 2018, 30 miles added to the regional trail network. Examples:

- Mountains to Sound Greenway Trail in King County
- Sound to Olympics Trail in Kitsap County
- Pipeline Trail in Pierce County
- White Horse Trail in Snohomish County



Farmland, Working Forests, Aquatic Systems, and Natural Lands



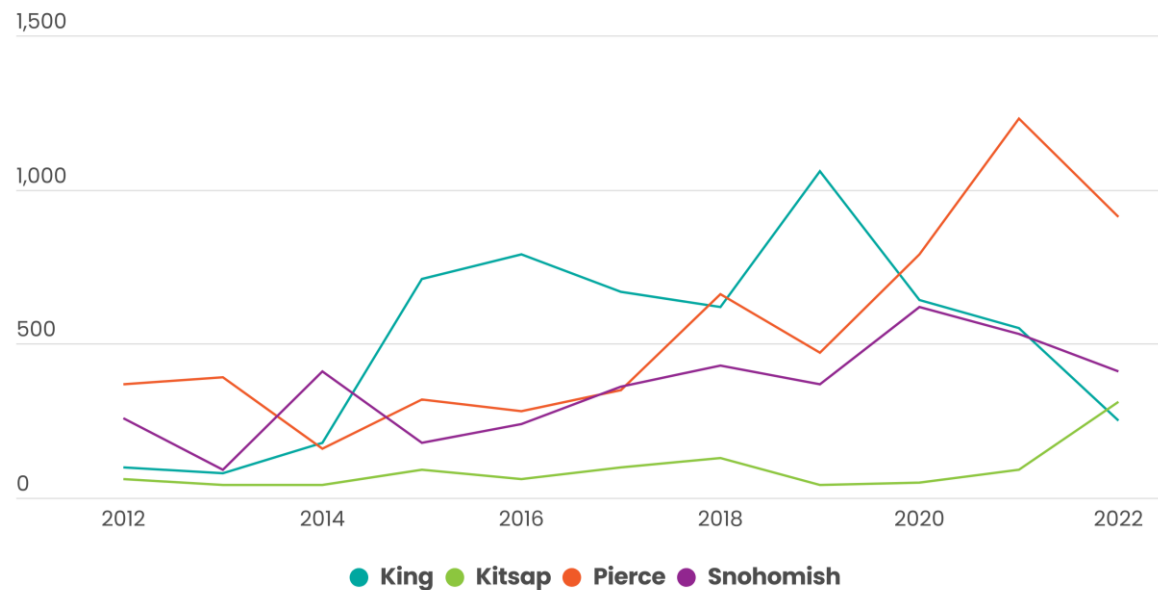
Short term goal: 80,000 more acres of open space in long-term protection by 2025

Conservation easements: 6,100 acres recorded on land in the regional open space network (2017–2023)

COUNTY	2017	2023	2017–2023
King	173,050	175,230	2,170
Kitsap	1,180	2,270	1,090
Pierce	9,300	11,640	2,340
Snohomish	12,510	13,000	500
Region	196,040	202,150	6,100

Farmland, Working Forests, Aquatic Systems, and Natural Lands

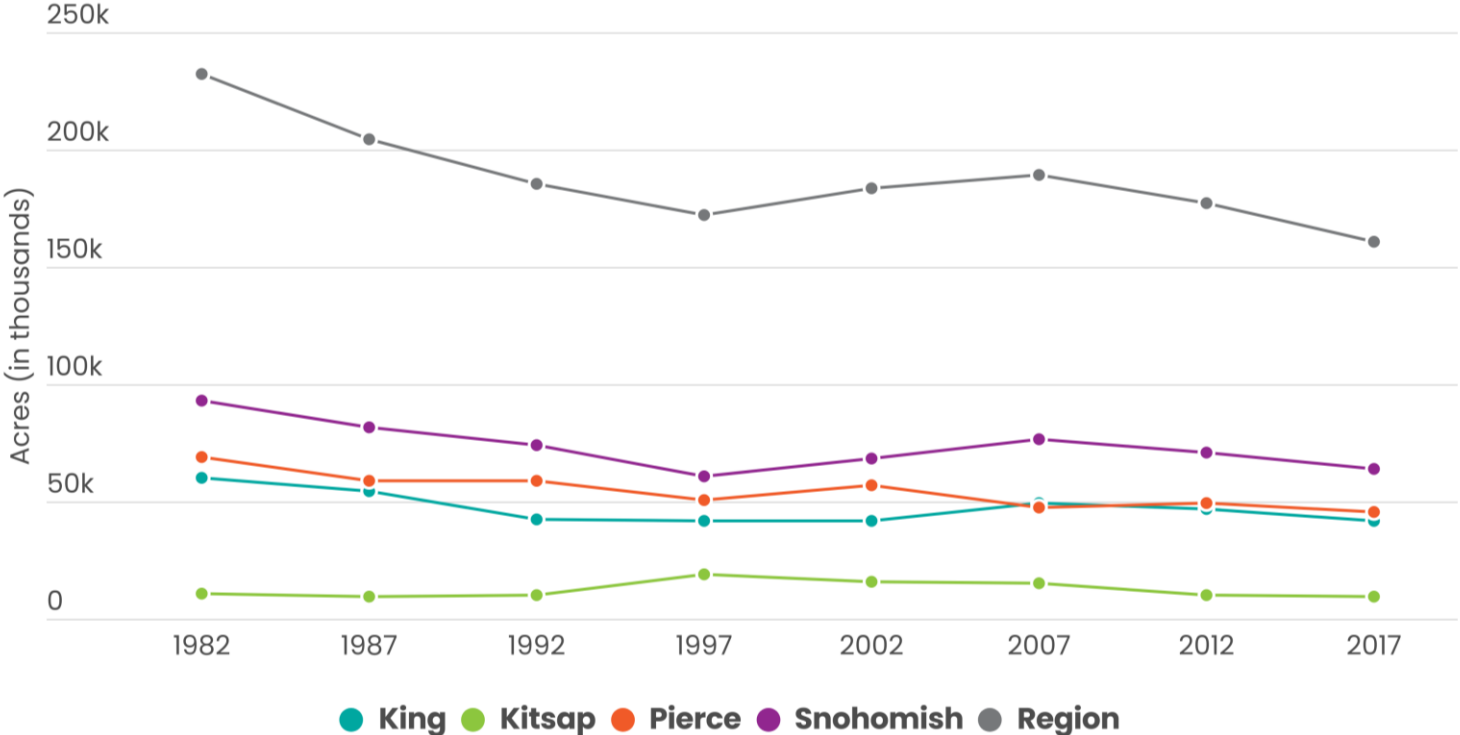
Net new housing units: 16,460 added on lands in the regional open space network (2012-2022). 81% in urban growth areas.



Data source: County Assessment Data, Snohomish County PUD, PSRC



Farmland



Data Source: Census of Agriculture

Census of Agriculture:

Farmland in the region decreased 71,740 acres (1982-2017)

NOAA land cover data:

Farmland on rural and resource lands in the region decreased 290 acres (2010-2016)

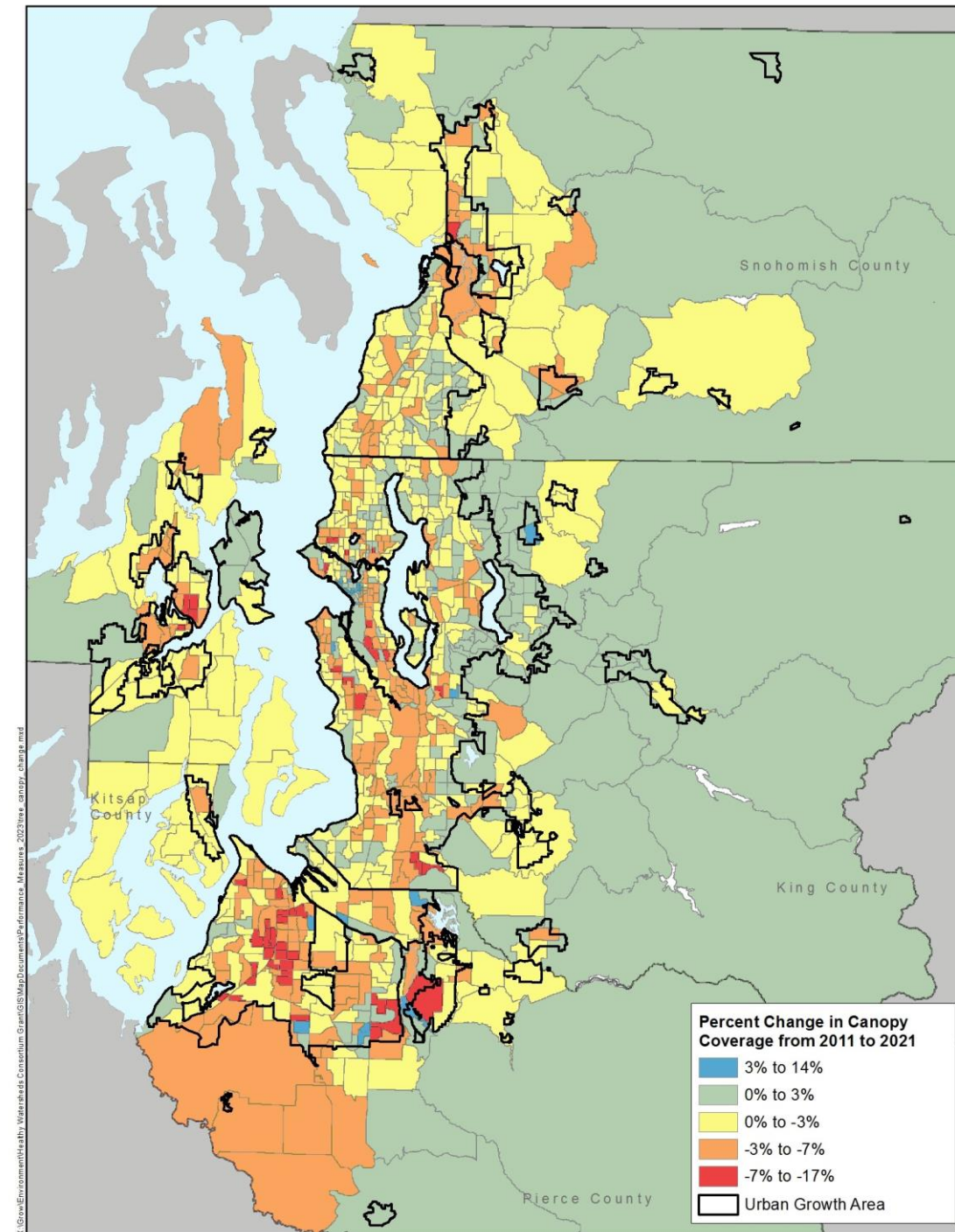


Tree Canopy Cover

Goal: By 2050, tree canopy cover in region remains at 2018 levels. By 2050, it will increase in the regional open space network.

Tree canopy cover change 2011–2021:

- Region: no change
- Urban: decrease of 3%
- Regional open space network: no change



Urban Growth

2012-2022 housing development in urban growth areas:

- Region: 95%
- King: 99%
- Kitsap: 73%
- Pierce: 88%
- Snohomish: 92%



Implementation



Many implementers:

- Cities
- Non-governmental organizations
- Counties
 - King County Land Conservation Initiative
 - Kitsap County Natural Resource Asset Management Program
 - Pierce County Land Conservation Plan
 - Snohomish County Land Conservation Strategy



Conclusions

- Urban open space: increasing
- Regional trails: increasing
- Farmland: decreasing
- Working forests: tree canopy increasing
- Aquatic systems and natural lands: need more information
- Tree canopy cover: holding steady in non-urban areas, decreasing in urban areas



Feedback on Draft

Draft report posted at:

<https://www.psrc.org/our-work/open-space-conservation>

Send feedback by August 23
to eharris@psrc.org



Questions



- Do you have any reactions or feedback on the open space information provided?
- What additional information should PSRC review for a more in-depth analysis and update of the Regional Open Space Conservation Plan?
- What are ways that PSRC could support jurisdictions' work to protect and enhance open space?



Thank You!

Erika Harris, AICP

Senior Planner, eharris@psrc.org

Drew Hanson

Senior Planner/GIS Analyst, dhanson@psrc.org



Puget Sound Regional Council