

# Title VI Demographic Profile

Equity Advisory Committee

June 6, 2024



Puget Sound Regional Council



*We are leaders in the region to realize equity for all. Diversity, racial equity and inclusion are integrated into how we carry out all our work.*

[psrc.org/equity](https://psrc.org/equity)

# Overview

## Highlights from March 2024 meeting

### EAC Demographic Profile Subcommittee

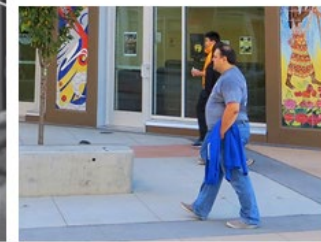
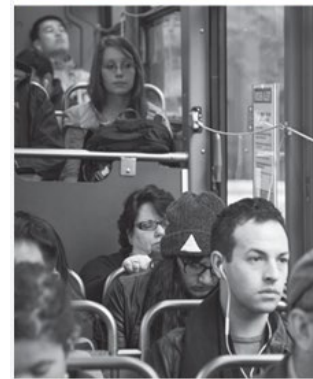
- Proposed scope of work

### 2024 Demographic Profile

- Project update
- Revised race/ethnicity reporting categories
- Next steps

### Question for Equity Advisory Committee

- Does the Committee have questions or feedback on any of the above?



# Purpose of Demographic Profile

## Compile demographic information for region

- Environmental justice populations (people of color, low-income)
- Language and limited English proficiency (LEP)
- Additional equity populations
- Summary statistics and geographic distributions and patterns

## For purpose of:

- Informing environmental justice and equity **analyses of disproportionate impacts**
- Supporting **effective public outreach and engagement** of environmental justice and other equity populations

# Equity Focus Areas (EFAs)

Based on foundational work in

## VISION 2050 & the Regional Transportation Plan (RTP)

Six demographics used to measure and track disparities



Equity Focus Areas (EFAs)  
have higher proportions of members of these groups



# 2021 Profile - Populations and Characteristics

Dimensions	Equity Focus Areas	Additional Characteristics
Race & Ethnicity	-People of color	-Race and Hispanic/Latinx origin detail -Asian sub-population detail
Income	-People with low incomes <200% poverty	-Income <100% and <150% poverty -Median household income
Language	-People with limited English proficiency	-Common languages spoken
Age	-Youth (age <18) -Older adults (age 65+)	
Ability	-People with a disability	
Sex		-Women
Household Type		-Single parent households
Vehicle Ownership		-Zero-vehicle households



# Guiding Questions for EAC Subcommittee

## Scope and role of demographic profile

- Consider **additional equity lenses**?
- Opportunities to **better support downstream equity work**?
- Questions regarding **PSRC's broader Title VI program**?

## Technical and data refinements

- Questions regarding **revised race & ethnicity reporting categories**?
- Other technical and data refinements?

## 2024 Demographic Profile interactive StoryMap report

- Engage subcommittee to **help shape and frame the report**

# 2024 Profile – Project Update

Revisited federal statutes and guidance

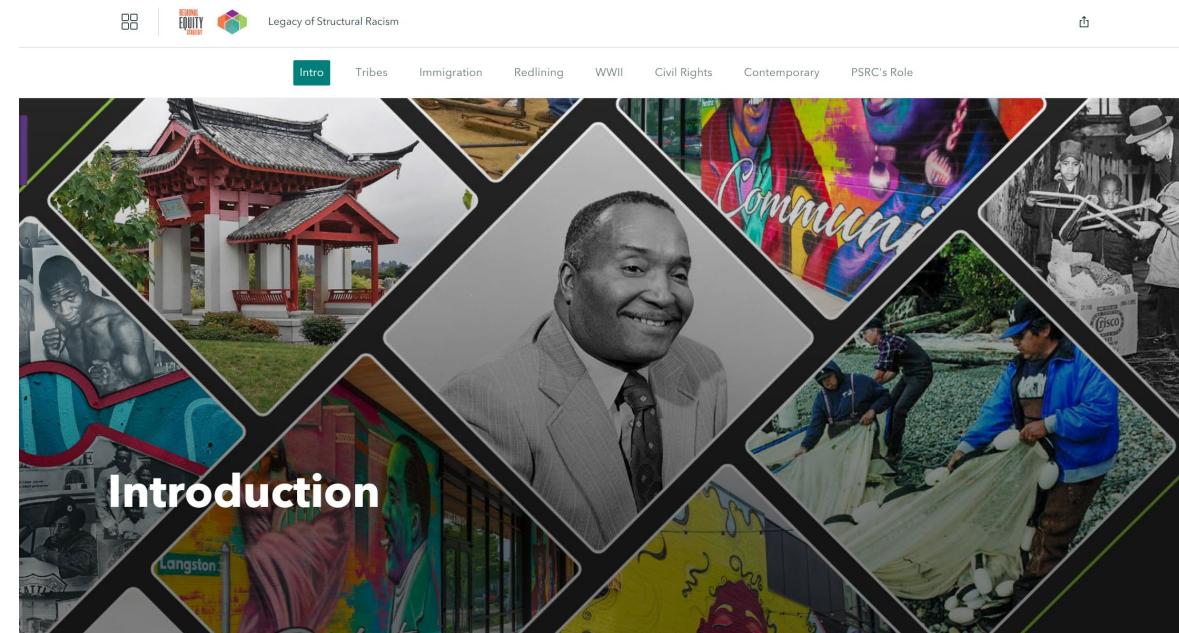
Reviewed best practices at peer metropolitan planning organizations (MPOs)

Data development and analysis

- Updated Race/Ethnicity reporting categories
- Expanded intersectional detail for race, ethnicity and income

Final products

- PDF report for federal partners
- Interactive StoryMap report



# Race and Hispanic/Latinx Origin Reporting

## Current Federal Standard

**Are you of Hispanic, Latino or Spanish origin?**

- No, not of Hispanic, Latino or Spanish origin
- Yes, of Hispanic, Latino or Spanish origin

**What is your race?**

*Mark 1 or more boxes.*

- White
- Black or African American
- American Indian or Alaska Native
- Asian
- Native Hawaiian and Other Pacific Islander
- Some other race



## Overlapping Categories

	Not Hispanic or Latinx	Hispanic or Latinx
Race	American Indian or Alaska Native	American Indian or Alaska Native
	Asian	Asian
	Black or African American	Black or African American
	Native Hawaiian and Other Pacific Islander	Native Hawaiian and Other Pacific Islander
	White	White
	Some other race	Some other race
	Two or more races	Two or more races





# Race and Hispanic/Latinx Origin Reporting

## NEW Federal Standard

**What is your race?**

*Select all that apply.*

- American Indian or Alaska Native
- Asian
- Black or African American
- Hispanic or Latino
- Middle Eastern or North African
- Native Hawaiian and Other Pacific Islander
- White



# Race and Hispanic/Latinx Origin Reporting

## Overlapping Categories

	Not Hispanic or Latinx	Hispanic or Latinx
Race	American Indian or Alaska Native	
	Asian	
	Black or African American	
	Native Hawaiian and Other Pacific Islander	
	White	
	Some other race	
	Two or more races	



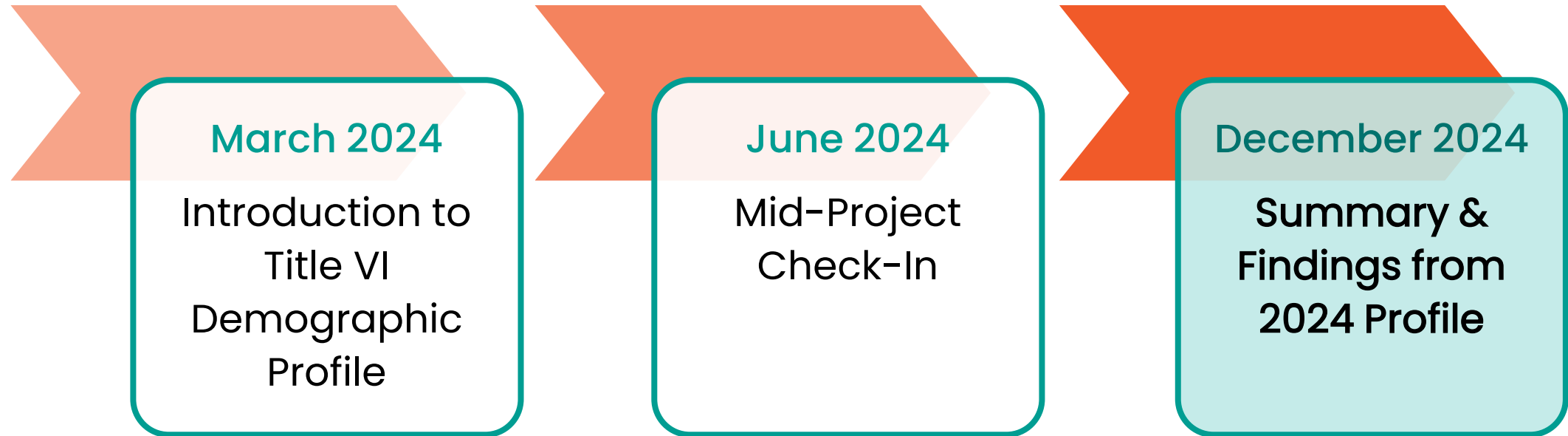
## Non-Overlapping Categories

Race and Ethnicity
American Indian or Alaska Native
Asian
Black or African American
Hispanic or Latinx
Native Hawaiian and Other Pacific Islander
White
Some other race
Two or more races



# Next Steps

## Project Check-Ins with Equity Advisory Committee



PSRC's 2024 Title VI Report **due October 1, 2024**

# EAC Feedback

Does the Equity Advisory Committee have questions or feedback regarding:

1. The EAC Subcommittee proposed scope of work?
2. The revised race/ethnicity reporting categories being implemented in the 2024 demographic profile?
3. The project direction or next steps?





# Thank You!

**Carol Naito**

Program Manager, Data Applications  
[cnaito@psrc.org](mailto:cnaito@psrc.org)



Puget Sound Regional Council

# Slides from March 7<sup>th</sup> EAC Presentation

# Overview

## What is the Title VI Demographic Profile?

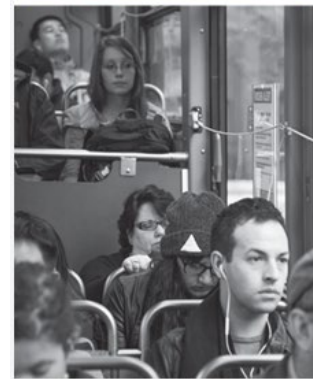
- Title VI and environmental justice framework
- Purpose of demographic profile
- Relationship with equity focus areas (EFAs)

## 2021 Demographic Profile – Content

## 2024 Demographic Profile – Scope of Work

## Next Steps

## EAC Feedback



# EAC Feedback

## Questions for Equity Advisory Committee:

1. Questions about **Title VI demographic profile and its purpose?**
2. Feedback on **scope of work** for 2024 update to demographic profile?





# Title VI of the Civil Rights Act of 1964



Title VI of the Civil Rights Act of 1964 states that “No person in the United States shall, on the ground of race, color, or national origin, be excluded from participation in, be denied the benefits of, or be subjected to discrimination **under any program or activity receiving Federal financial assistance.**”



# Title VI and Environmental Justice

## Executive Order 12898 (Clinton, 1994)

- Directs federal agencies to **identify and address “disproportionately high and adverse human health and environmental effects of its programs, policies, and activities on minority populations and low-income populations”**

## Executive Order 13166 (Clinton, 2000)

- Directs federal agencies to **improve access to services for persons with limited English proficiency**

# Related Civil Rights Statutes

## Additional protected classes:

- **Age** (Title 42 U.S. Code §6102)
- **Sex** (Title 23 U.S. Code §324)
- **Disability** (Americans with Disabilities Act of 1990, Title 42 U.S. Code §§12101-12213)



# Purpose of Demographic Profile

## Compile demographic information for region

- Environmental justice populations (people of color, low-income)
- Language and LEP
- Additional equity populations
- Summary statistics and geographic distributions and patterns

## For purpose of:

- Informing environmental justice and equity **analyses of disproportionate impacts**
- Supporting **effective public outreach and engagement** of environmental justice and other equity populations

# Equity Focus Areas (EFAs)

*Based on foundational work in*

## VISION 2050 & the Regional Transportation Plan (RTP)

Six demographics used to measure and track disparities

People of  
Color

People with  
Low Incomes

People with  
Disabilities

Youth  
(Ages 5-17)

Older Adults  
(Age 65+)

People with  
limited English  
proficiency  
(LEP)

Equity Focus Areas (EFAs)

have higher proportions of members of these groups



# FHWA Regional Project Evaluation Criteria

## Highlights of Identification of Population Groups

- What Equity Focus Areas (EFAs) will the project serve:
  - People of Color
  - People with Low Incomes
  - People with Disabilities
  - Youth (Ages 5-17)
  - Older Adults (Age 65+)
  - People with LEP (Limited English Proficiency)

CRITERIA
Development of Centers
Mobility and Accessibility
Outreach and Displacement
Safety
Air Quality / Climate Change



# 2021 Profile - Populations and Characteristics

Dimensions	Equity Focus Areas	Additional Characteristics
Race & Ethnicity	-People of color	-Race and Hispanic/Latinx origin detail -Asian sub-population detail
Income	-People with low incomes <200% poverty	-Income <100% and <150% poverty -Median household income
Language	-People with limited English proficiency	-Common languages spoken
Age	-Youth (age <18) -Older adults (age 65+)	
Ability	-People with a disability	
Sex		-Women
Household Type		-Single parent households
Vehicle Ownership		-Zero-vehicle households



# 2021 Profile - Tables and Figures

## List of Tables

- Table 1. Population by Race and Hispanic/Latinx Origin: 2019 .....9
- Table 2. Low-Income Populations: 2019..... 19
- Table 3. Low Income Populations by Race and Hispanic/Latinx Origin: 2019 .....23
- Table 4. Median Household Income by Race and Hispanic/Latinx Origin: 2019 .....24
- Table 5. Income Characteristics of Asian Alone Populations: 2015-2019.....27
- Table 6. Low Income Populations by Race and Hispanic/Latinx Origin and Sex: 2019 .....31
- Table 7. Income Characteristics of Households by Type: 2019 .....33
- Table 8. Poverty Status for Population Age 65 and Over: 2019 .....36
- Table 9. Poverty Status for Population Under Age 18: 2019.....37
- Table 10. Poverty Status for Persons with a Disability: 2019 .....39
- Table 11. Zero-Vehicle Households: 2019 .....41
- Table 12. Common Languages Other Than English Spoken in the Central Puget Sound: 2019 .....43
- Table 13. Limited English Proficiency: 2019.....46
- Table 14. Ability to Speak English by Language Spoken at Home: 2019 .....47

## 2021 Central Puget Sound Demographic Profile:

<https://www.psrc.org/media/1822>

## List of Figures

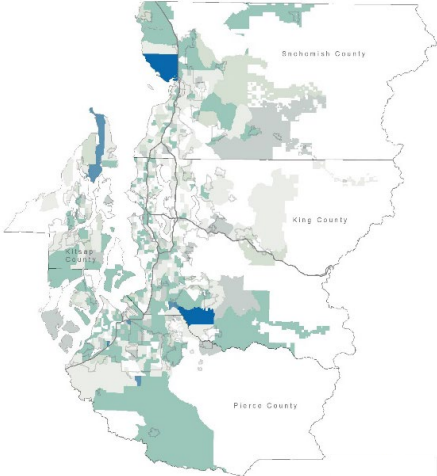
- Figure 1. Population by Race and Hispanic/Latinx Origin: 2019 .....8
- Figure 2. Population Change by Race and Hispanic/Latinx Origin: 2000-2019 ..... 11
- Figure 3. People of Color ..... 12
- Figure 4. American Indian and Alaska Native Population ..... 13
- Figure 5. Asian Population ..... 14
- Figure 6. Black or African American Population ..... 15
- Figure 7. Native Hawaiian and Other Pacific Islander Population ..... 16
- Figure 8. Hispanic/Latinx Population..... 17
- Figure 9. Low-Income Populations: 2019 ..... 18
- Figure 10. Population Below 100% Poverty .....20
- Figure 11. Low-Income Population .....21
- Figure 12. Poverty Rates by Race and Hispanic/Latinx Origin: 2019.....22
- Figure 13. Median Household Income by Race and Hispanic/Latinx Origin: 2019 .....25
- Figure 14. People of Color and Low-Income Populations .....28
- Figure 15. Median Household Income, Seattle-Tacoma-Bellevue MSA: 2019.....30
- Figure 16. Poverty Rate for Older Adult Population Age 65 and Over: 2019 .....34
- Figure 17. Poverty Rate for Youth Population Age 5-17: 2019 .....35
- Figure 18. Poverty Rate for Persons with a Disability: 2019 .....38
- Figure 19. Zero-Vehicle Households by Householder: 2019 .....40
- Figure 20. Common Languages Spoken Other Than English: 2019.....42
- Figure 21. Populations Speaking English Less Than “Very Well”: 2019 .....45



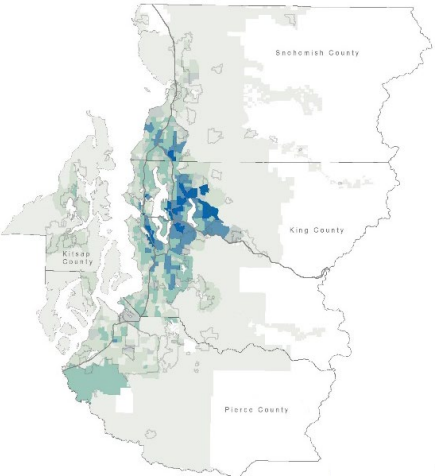


# Settlement Patterns by Race and Ethnicity

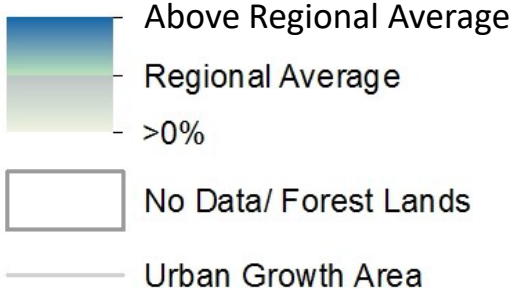
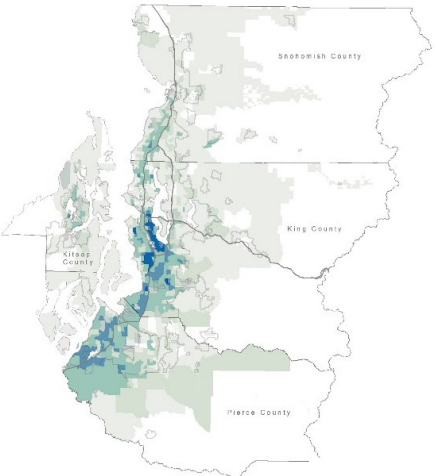
American Indian/Alaska Native



Asian

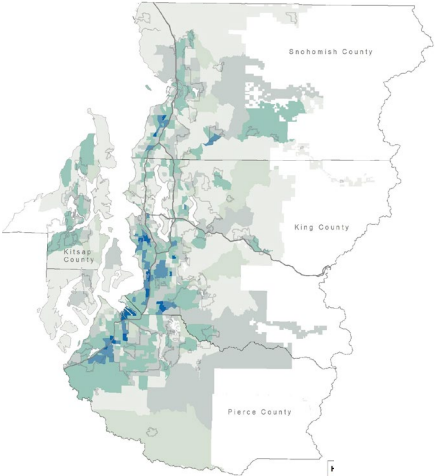


Black

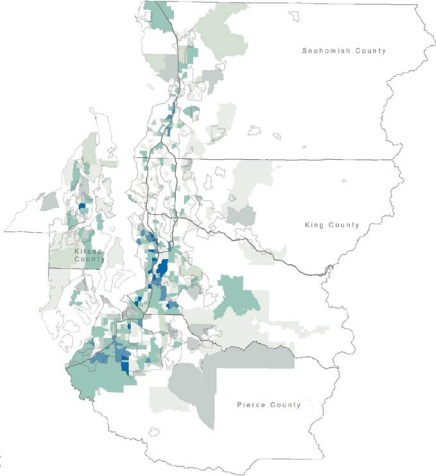


Source: American Community Survey, 2019 5-Year Estimates

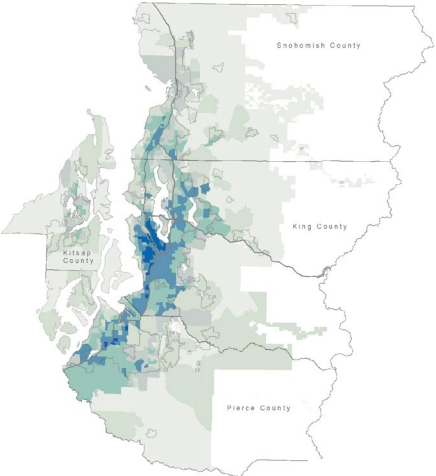
Hispanic/Latinx



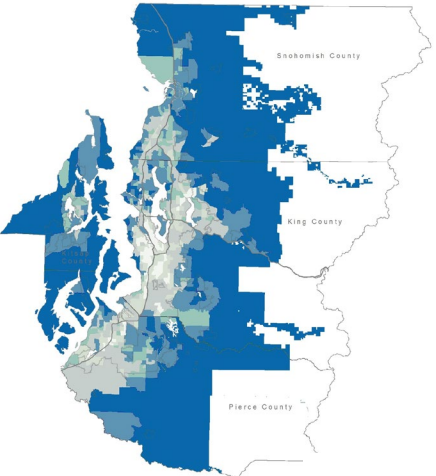
Native Hawaiian/Pacific Islander



People of Color

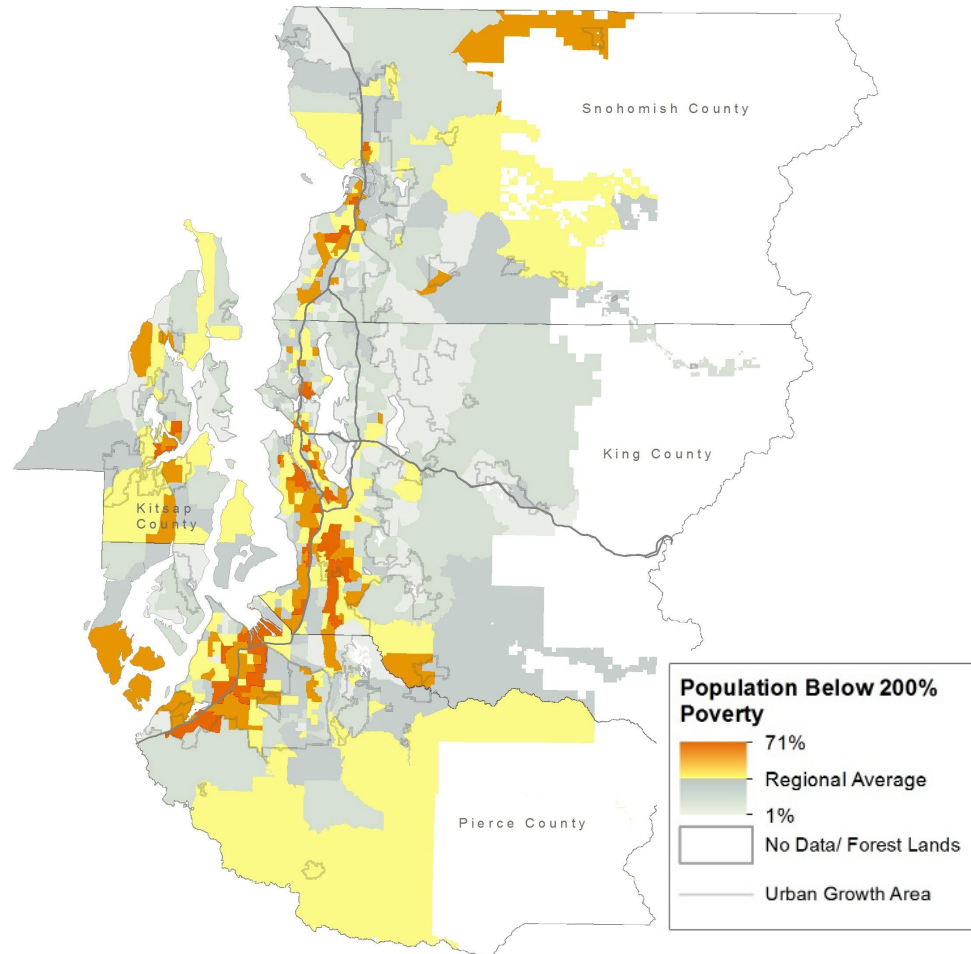


White Non-Hispanic

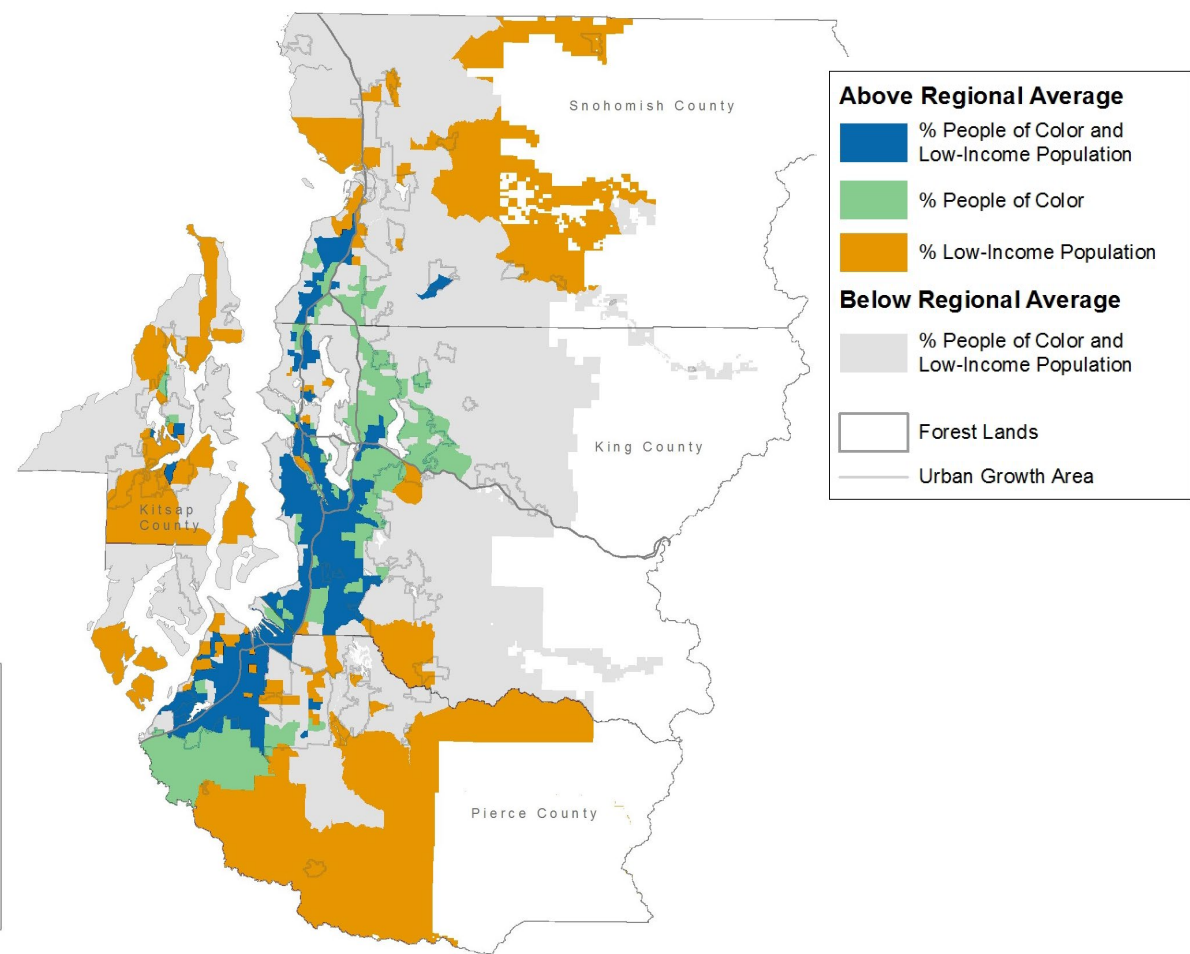


# Low-Income Population

## Population Below 200% Poverty



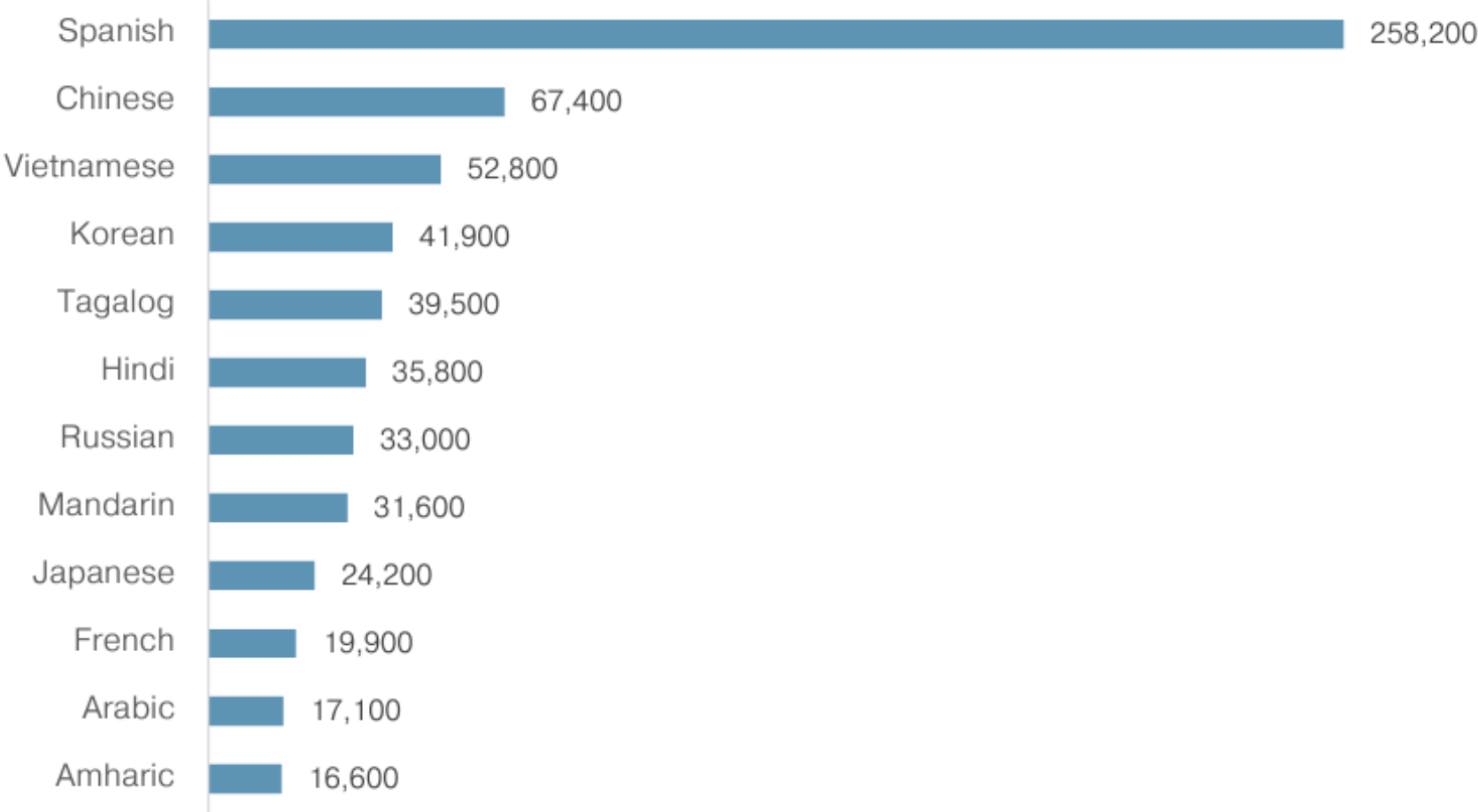
## Intersection with People of Color



Source: American Community Survey, 2019 5-Year Estimates

# Common Languages

## Common Languages Spoken Other than English, Central Puget Sound



Source: American Community Survey, 2019 1-Year Public Use Microdata Sample

# 2024 Profile – Scope of Work

Revisit federal statutes and guidance

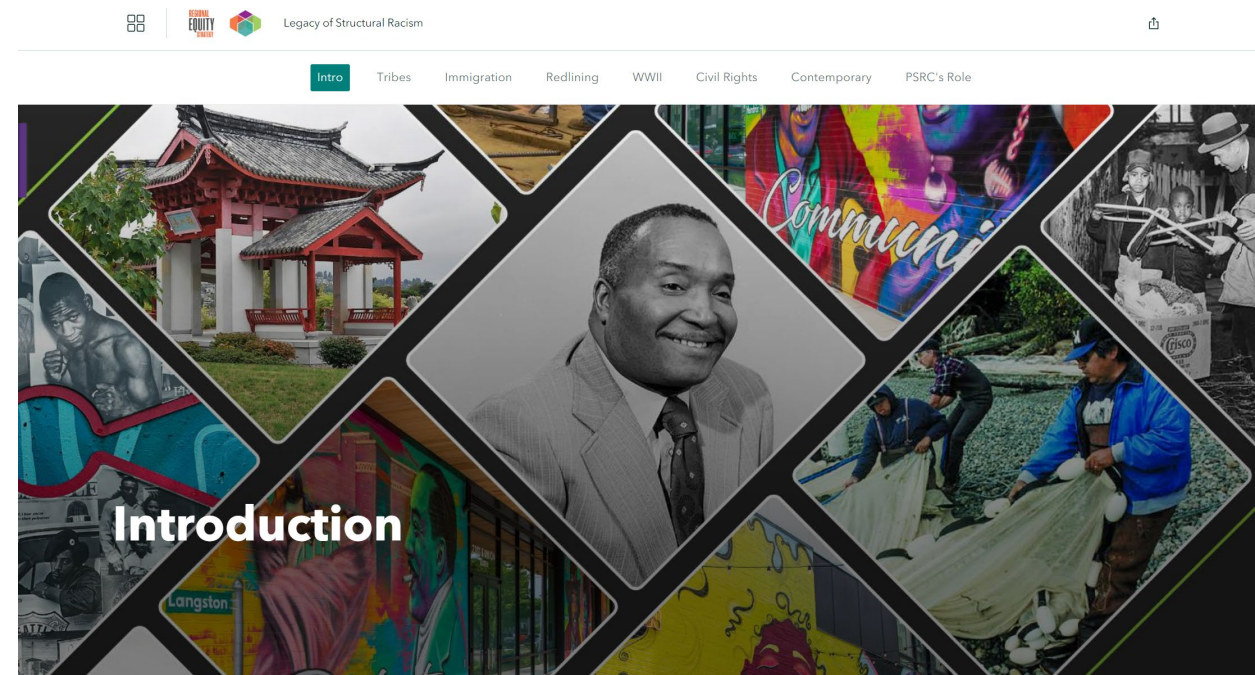
Review best practices at peer metropolitan planning organizations (MPOs)

Data development and analysis

- Update Race/Ethnicity reporting categories
- Incorporate technical improvements
- Refine table content, as needed

Final products

- PDF report for federal partners
- Interactive StoryMap report



# Early Analysis of Peer MPOs

**PSRC's analysis is advanced** compared to peer MPOs

- Equity Focus Areas
- Intersectionality
- StoryMap interactive report

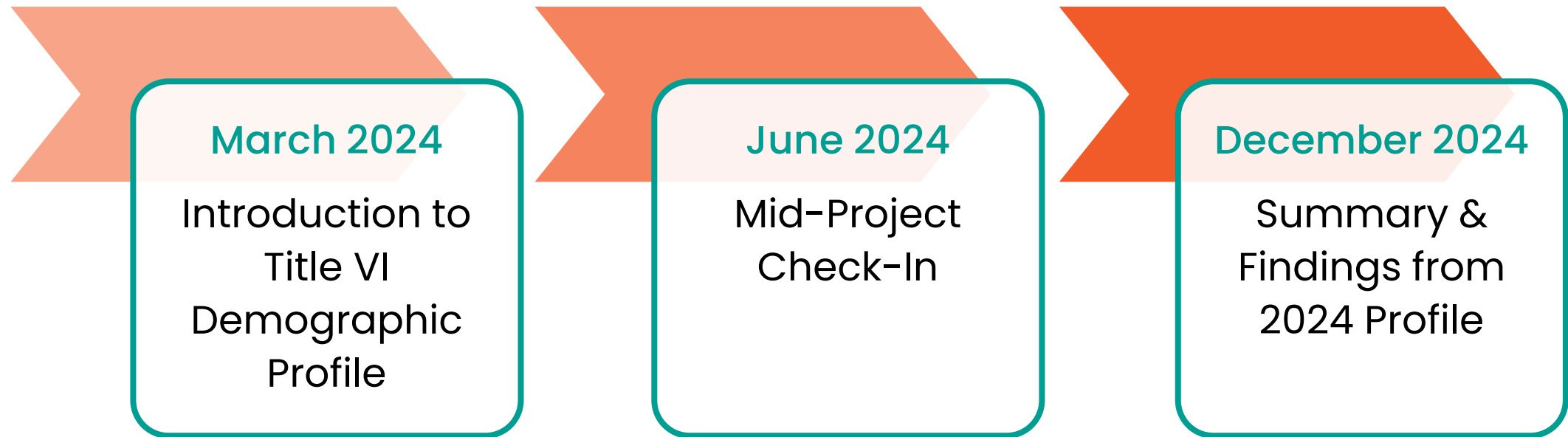
Some MPOs consider **additional data points**

- Public Health
- Education

**More discussion is needed** to determine if additional data points may warrant inclusion in PSRC's demographic profile

# Next Steps

## Project Check-Ins with Equity Advisory Committee



PSRC's 2024 Title VI Report **due October 1, 2024**

# EAC Feedback

## Questions for Equity Advisory Committee:

1. Questions about **Title VI demographic profile and its purpose?**
2. Feedback on **scope of work** for 2024 update to demographic profile?



# Thank You!

**Carol Naito**

Program Manager, Data Applications  
[cnaito@psrc.org](mailto:cnaito@psrc.org)



Puget Sound Regional Council