

Transportation Safety: A Commitment to Action

May 30, 2024



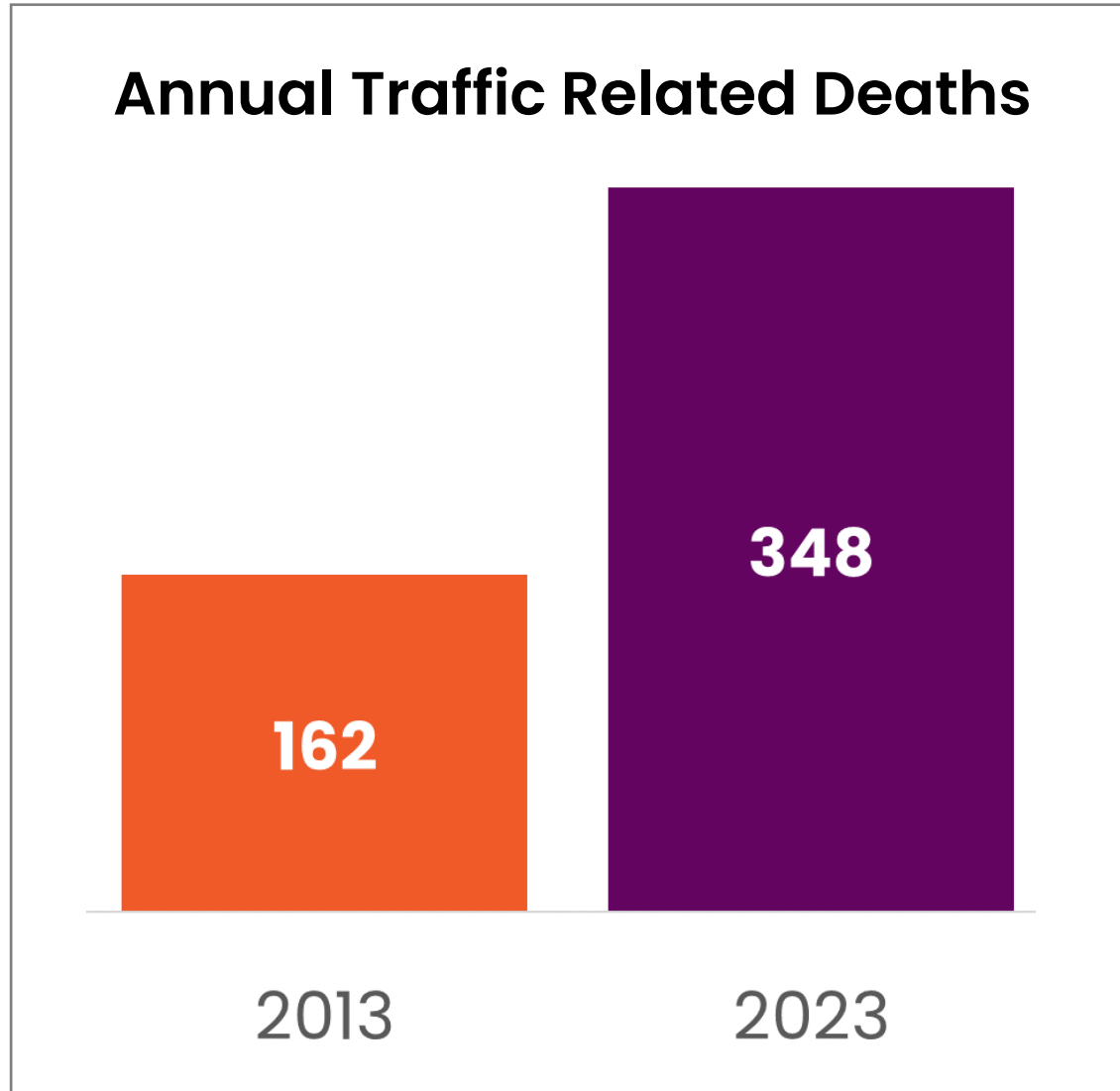
 Puget Sound Regional Council



We are leaders in the region to realize equity for all. Diversity, racial equity and inclusion are integrated into how we carry out all our work.

psrc.org/equity

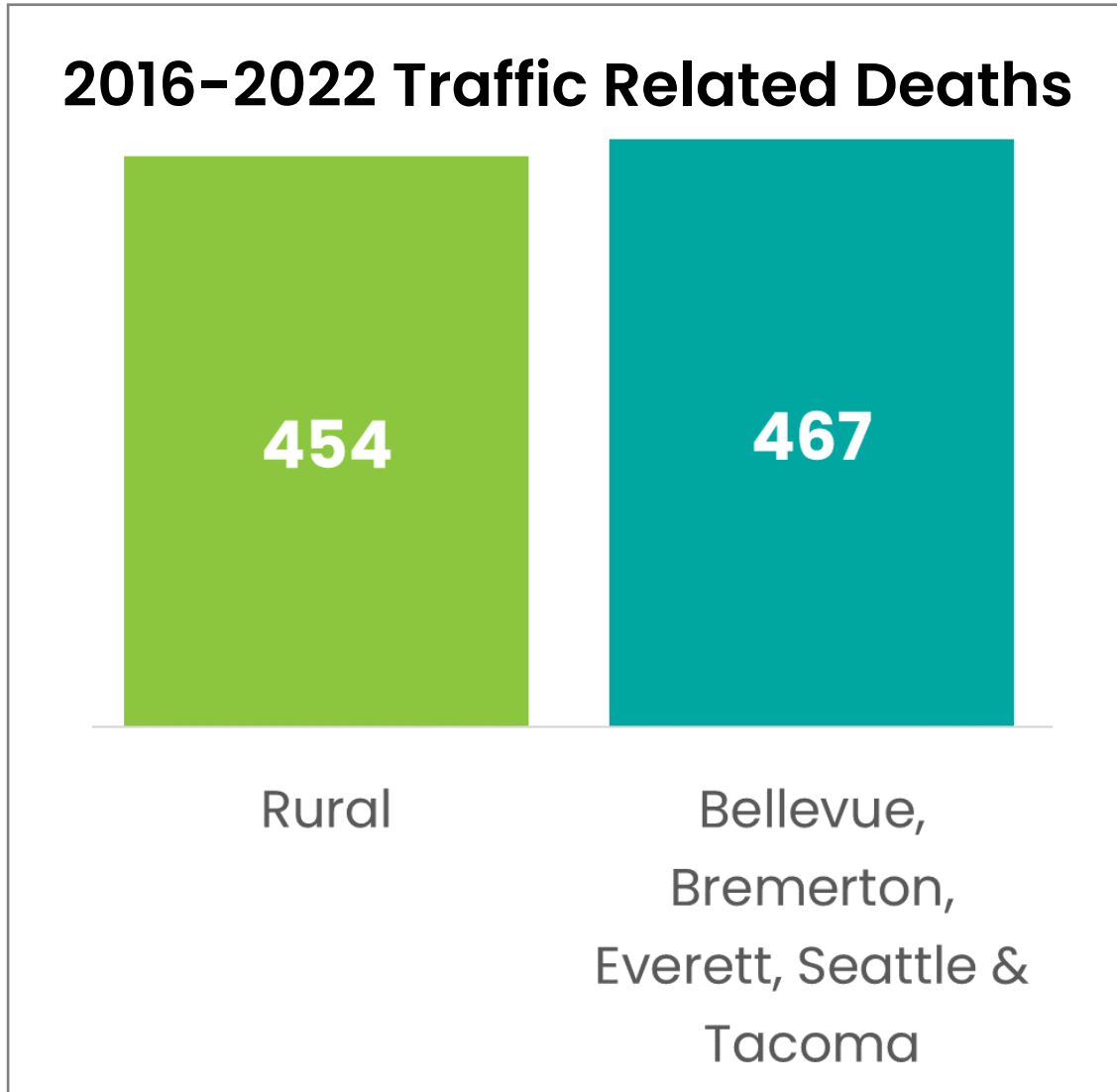
Traffic Related Deaths Are at Historic Levels



- Traffic Related deaths have **doubled** in the past 10 years.
- It isn't simply due to population growth — the region has grown by **17%** since 2013.



Rural Collisions are Generally More Severe



- There were almost as many traffic related deaths in the **Rural area** as the five largest cities in the region.
- The population of these five cities is **2.4** times larger than that of the rural area.



Regional Safety Summit



Safe Streets and Roads for All (SS4A) Grants



PSRC is working with 16 jurisdictions on local safety action plans.



Actions You Can Take



1. Commit to a Safe Systems Approach
2. Join USDOT's [Call to Action](#)
3. Participate in Regional Safety Action Plan events
4. Apply for SS4A grant funds

