

2024 Outreach Activities

Transportation Policy Board

May 09, 2024



Puget Sound Regional Council



We are leaders in the region to realize equity for all. Diversity, racial equity and inclusion are integrated into how we carry out all our work.

psrc.org/equity

Agenda

- Equitable Engagement Guidance
- Overview of initial Regional Safety Action Plan Engagement
- Summary of Engagement for 2022 Regional Transportation Plan & Coordinated Mobility Plan
- Updates to engagement plan for 2026 Regional Transportation Plan & Coordinated Mobility Plan



PSRC Equitable Engagement Guidance

- Updated guidance for PSRC staff and engagement consultants
- Provides guidance for:
 - Content Creation
 - Distribution of Outreach Materials
 - Events
 - Visuals



Regional Safety Action Plan Engagement



PSRC interviewed several firms to assist with large-scale public engagement

Uncommon Bridges was selected in March

Experience doing equitable engagement with government partners



Guiding Principles

- Do this work in partnership
- Accountability to those closest to impacts and harms
- Relationships and capacity building are essential to long-term success
- Course correcting is inherent
- Conflict is an important element of growth



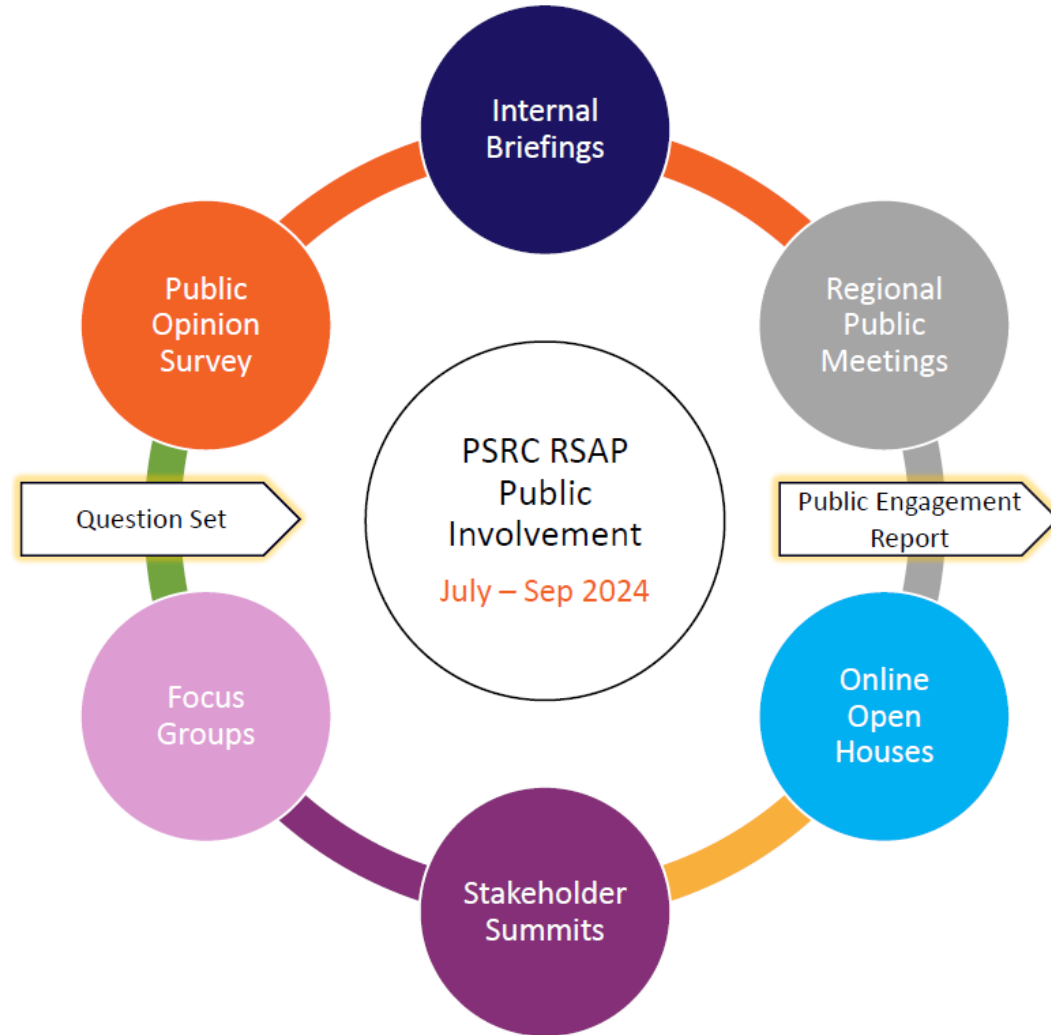
uncommon
BRIDGES



RSAP Public Involvement Framework

Inputs

- Existing research
- PSRC Safety Summit
- Committee Engagement



Outputs

- Stakeholder Engagement Report
- Priority Policies & Interventions
- Risk Tolerance for Policies & Interventions



RSAP Public Involvement Timeline

Engagement	Timeline
Stakeholder Briefings	Ongoing
Regional Public Meetings	June-September
Online Open Houses	June-September
Stakeholder Summits	June-August
Focus Groups	July-September
Public Opinion Survey	September-October
Circle Back with Engaged Groups	November-December
Final Engagement Report	January 2025



Key Stakeholders

Community	Issue Specific Interests
Community members and leaders	Transportation access and safety advocates
Local and regional businesses	Washington Traffic Safety Commission
Local Media	National Transportation Safety Board
Civic leaders	Advocates for Highway and Auto Safety
Community councils	World Health Organization
Transportation access and safety advisory councils	Public Safety Advocates
	Emergency Response Groups





Online Engagement Platform Virtual Outreach Meetings



Personal Interviews



Social Media



Survey

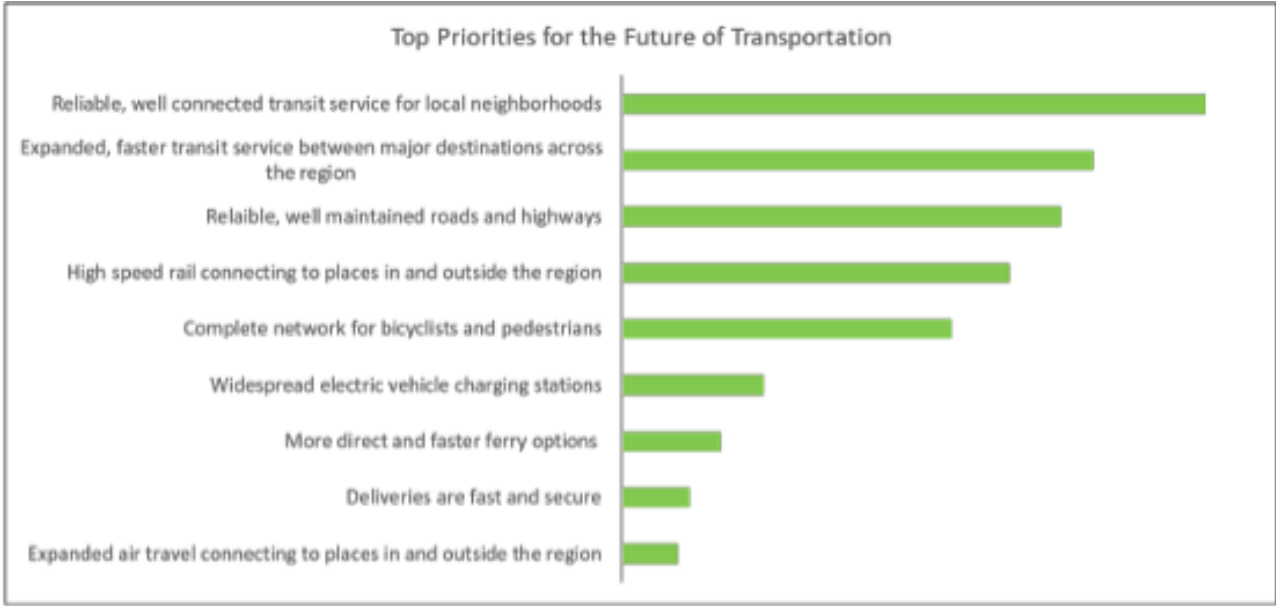
Puget Sound Regional Council
on Thursday

We want to hear from you! Take a survey to help plan the future of transportation in Puget Sound: <https://engage.psrc.org/regional-transportation-plan>

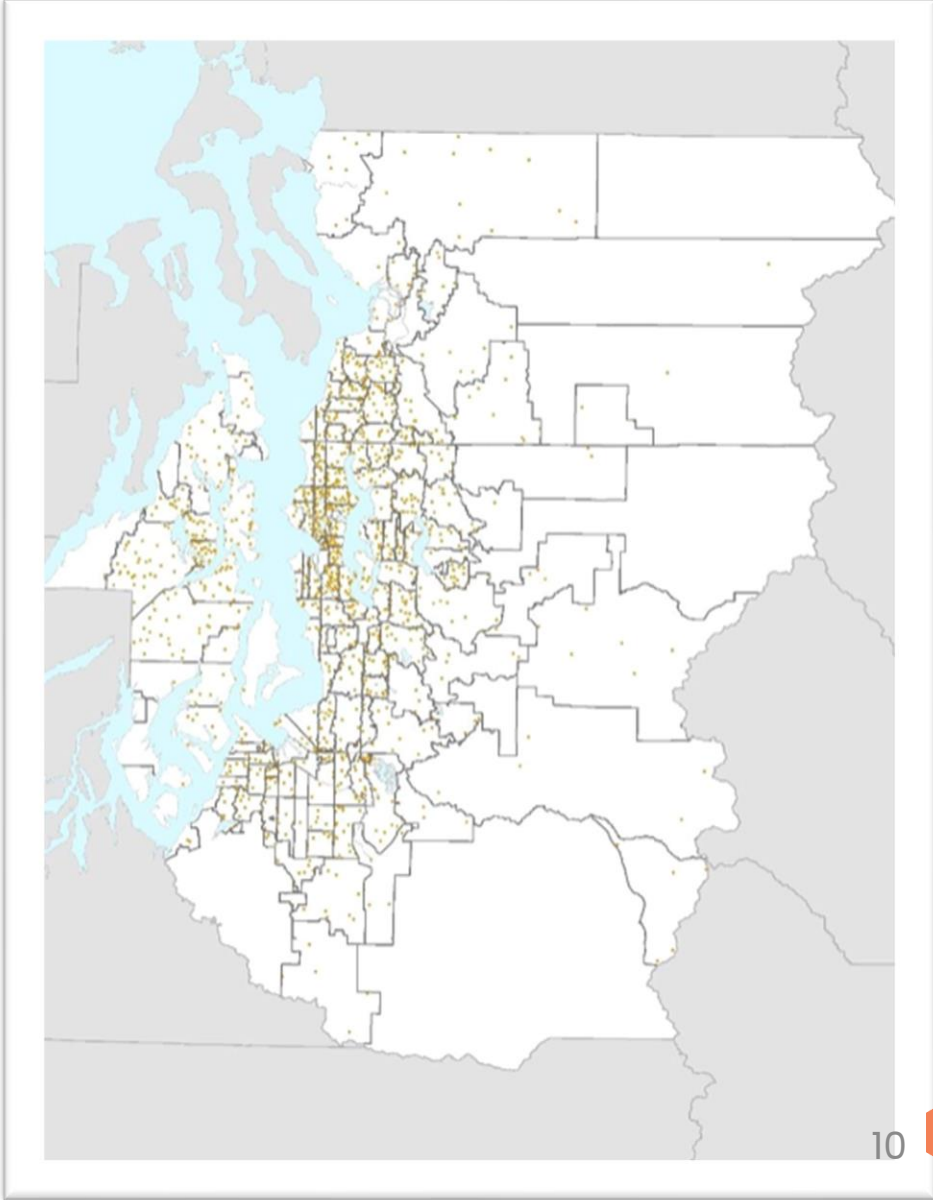
HOW WILL YOU GET AROUND?

ENGAGE.PSRC.ORG
Regional Transportation Plan
PSRC is developing the next Regional Transportation Plan, which will des...

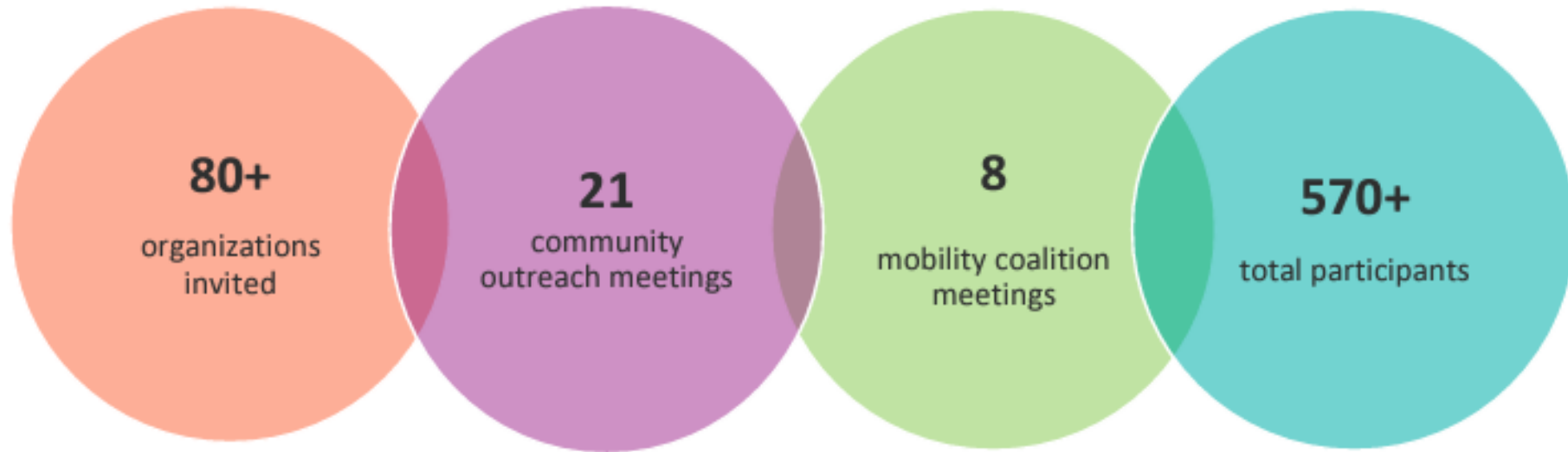




Source: PSRC Online Future of Transportation Survey, 2021



Coordinated Mobility Plan Outreach

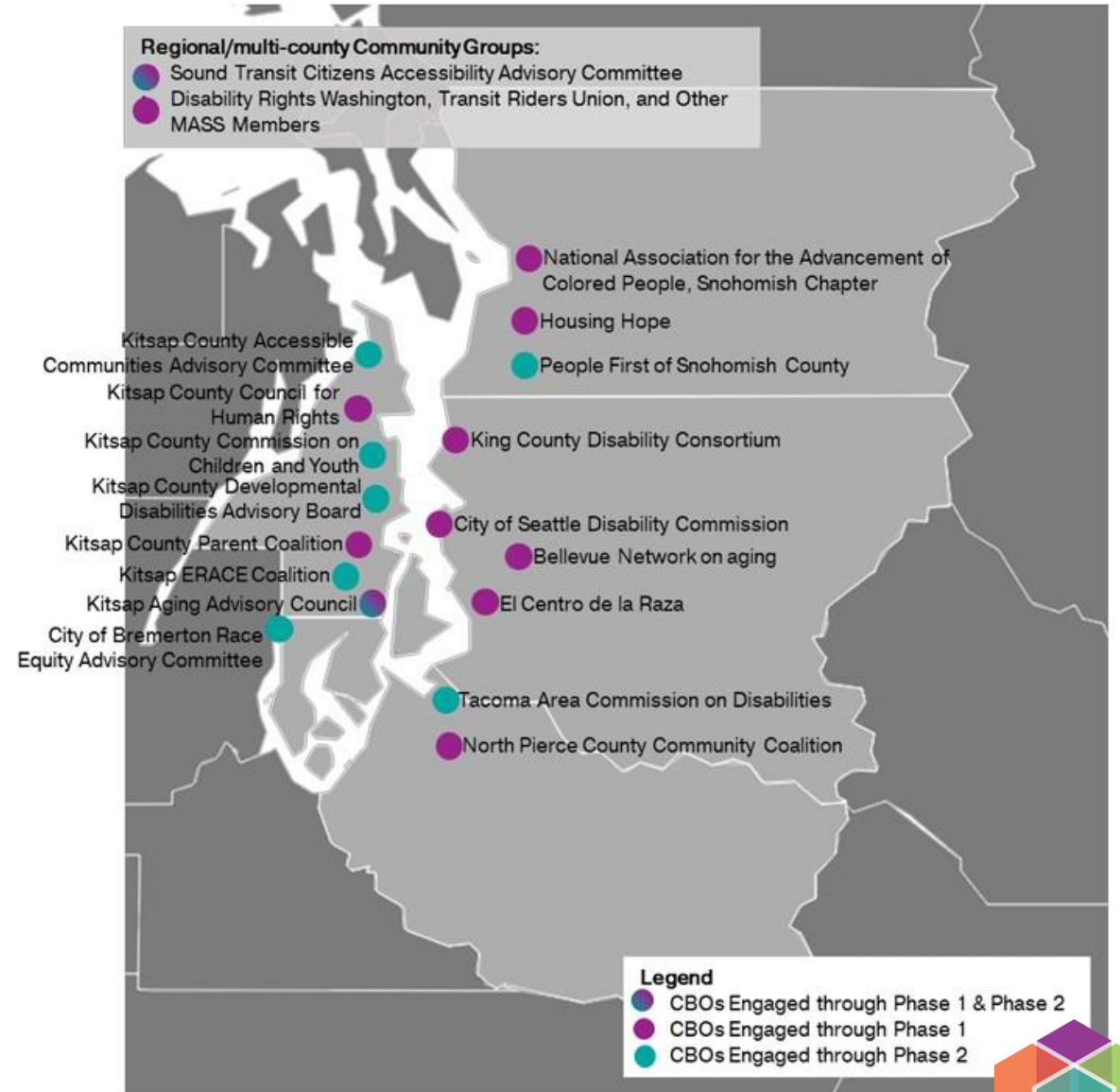


Coordinated Mobility Plan Outreach

“There are people who need dialysis who must travel more than an hour to get to the clinics. Some are going almost two hours per direction by transit, and they need to go to clinics 2-3 times a week.” -Participant representing rural residents, King County

“Students must travel more than two hours from Snoqualmie Valley using 2-4 different buses to get to Bellevue College for AP courses. If they have a car, it’s a 20-minute drive.” -Participant representing rural residents, King County

“I needed to take transit from Bainbridge Island to Bremerton. My transit agency app suggested to take ferries which takes 2-2.5 hours (can take up to 3 hours including waiting) but it takes 60 mins via car.” -Participant representing older adults, Kitsap County



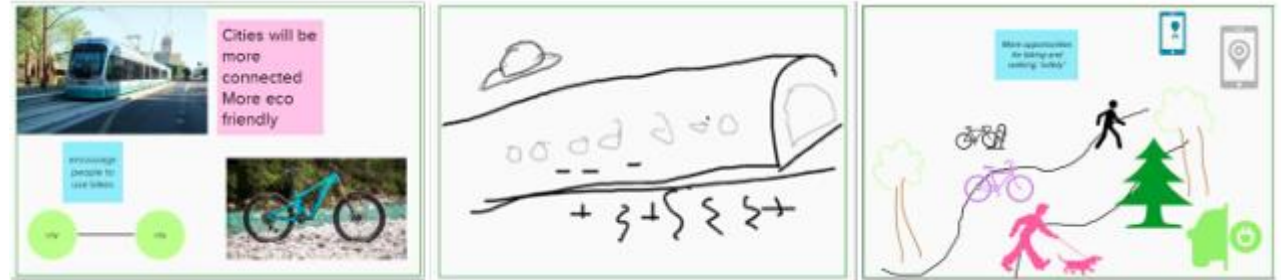
Preparation and Next Steps: RTP (2026-2050)



Ongoing Public Outreach Informs the Plan

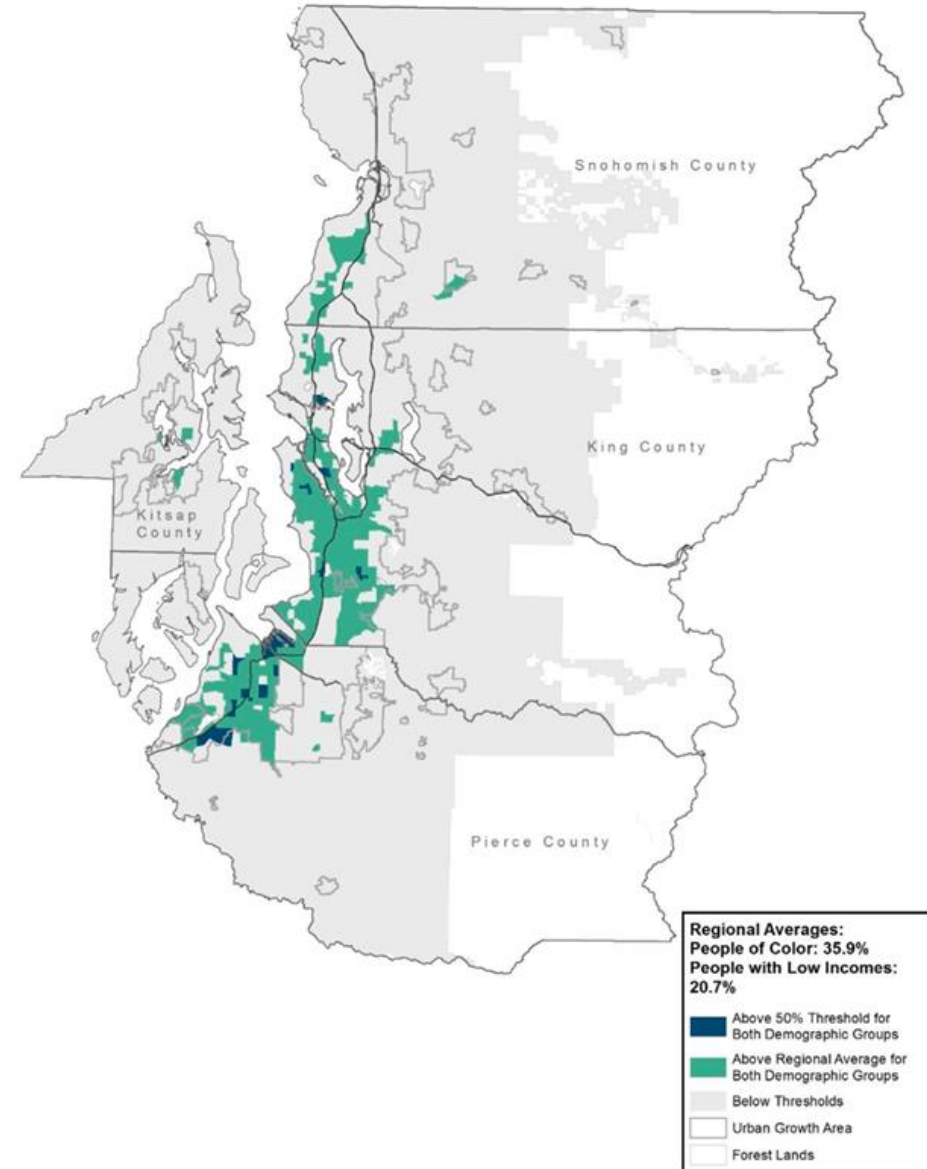
Outreach Plan 2026 RTP

- Public Opinion Survey
- Stakeholder Interviews
- Focus Groups
- Online Open House
- Community Workshops & Events
- Board & Committee Engagement
- Public Comment Period



Expanded Outreach for 2026 RTP

- Prioritizing Equity Focus Areas
- Building on the extensive RSAP Outreach
- Leveraging PSRC's Equitable Engagement Guidance & Compensation Policies



Expanded Outreach for 2026 RTP

- Continuing to build relationships Community-Based Organizations
- Deepening with Tribal Partners
- Expanding outreach to ***people with accessibility and mobility needs including*** young people



Thank You!

Noah P. Boggess

Senior Public Engagement Specialist

nboggess@psrc.org



Puget Sound Regional Council