



Emerald Alliance



# Implementing the Regional Open Space Plan: An Inventory of Existing Resources



# What do we mean by resources?

- What funding programs are being used for easements and acquisitions?
- What tools and programs are being utilized for long term protections?
- What groups are already convening and coordinating?
- What entities are implementing the plan?

<b>Total Conservation Needs</b>				
<b>Farmland</b> (Acres)	<b>Working Forests</b> (Acres)	<b>Aquatic Systems</b> (Acres)	<b>Natural Lands</b> (Acres)	<b>Regional Trails</b> (miles)
<b>104,000</b>	<b>183,200</b>	<b>93,700</b>	<b>81,700</b>	<b>300</b>
<b>463,000 acres</b>				



# What funding programs, incentives, and tools are being used?

- Local funding
- State funding
- Federal funding

Secretary Haaland Announces \$150 Million to Create Public Parks, Expand Recreation Opportunities in Urban Areas



5/10/2021

[doi.gov/lwcf.news](https://doi.gov/lwcf.news)



# County Funding

Funding Program	County	Regional Trails	Urban Open	Aquatic Systems	Natural Lands	Farmlands	Working Forests
Conservation Futures Tax	King	X	X	X	X	X	
	Snohomish	X	X		X	X	
	Pierce	X	X	X	X	X	X
	Kitsap				X	X	X
Parks Levy	King	X	X	X	X		
	Snohomish	X	X				
	Pierce	X	X				
	Kitsap	X	X				
Surface Water Management	King			X		X	
	Snohomish			X			
	Pierce			X		X	
	Kitsap			X			
Real Estate Excise Tax	King						
	Snohomish						
	Pierce						
	Kitsap						

Incentive Programs: TDR/PDR, Open Space Taxation

# Special Purpose District Funding

Funding & Incentive Programs	County	Regional Trails	Urban Open Space	Aquatic Systems	Natural Lands	Farmlands	Working Forests
Flood Control Zone District	King		X	X	X		
	Snohomish*						
	Pierce		X	X	X		
	Kitsap						
Conservation District	King		X	X		X	X
	Snohomish		X	X		X	
	Pierce			X		X	
	Kitsap			X		X	

\*Snohomish County Flood Districts: French Slough Marshland, Robe Valley, Stillaguamish



# State Funding

Funding Program	Oversight Agency	Regional Trails	Urban Open Space	Aquatic Systems	Natural Lands	Farmlands	Working Forests
Washington Wildlife and Recreation Program - Farmland	RCO					X	X
Washington Wildlife and Recreation Program - Habitat Conservation Projects	RCO		X	X	X		
Washington Wildlife and Recreation Program - Recreation Projects	RCO	X	X		X		
Aquatic Lands Enhancement Account	RCO/DNR	X		X	X	X	
Community Forest Program	RCO/DNR						X
Land and Water Conservation Fund	RCO	X	X	X	X		
Estuary and Salmon Restoration Program	WDFW			X	X		
Recreational Trails Program	RCO	X					
Rivers and Open Space Habitat program	DNR			X			X
Floodplains by Design	ECY	X		X		X	
Streamflow Restoration Grant Program	ECY			X			X

# Salmon Funding Allocations by Watershed

Funding Program	2019-2021 Allocations	Regional Trails	Urban Open Space	Aquatic Systems	Natural Lands	Farmlands	Working Forests
Salmon Recovery Funding Board (SRFB)	\$18,000,000			X	X		
<i>Stillaguamish</i>	\$499,070			X	X		
<i>Snohomish</i>	\$511,397			X	X		
<i>Lk WA/Cedar/Sammamish</i>	\$391,711			X	X		
<i>Green/Duwamish</i>	\$295,895			X	X		
<i>Puyallup-White/Chambers-Clover</i>	\$508,077			X	X		
<i>Nisqually</i>	\$376,749			X	X		
<i>East Kitsap</i>	\$266,339			X	X		
Puget Sound Acquisitions & Restoration Fund	\$50,000,000			X	X		
<i>Stillaguamish</i>	\$1,856,976			X	X		
<i>Snohomish</i>	\$1,902,846			X	X		
<i>Lk WA/Cedar/Sammamish</i>	\$1,457,509			X	X		
<i>Green/Duwamish</i>	\$1,100,987			X	X		
<i>Puyallup-White/Chambers-Clover</i>	\$1,890,232			X	X		
<i>Nisqually</i>	\$1,402,834			X	X		
<i>East Kitsap</i>	\$991,014			X	X		



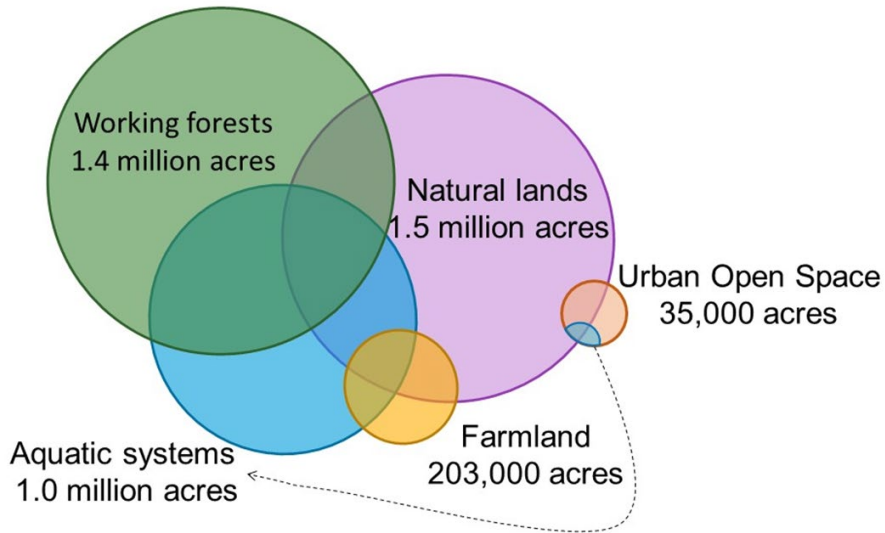
# Federal Funding

Funding Program	Oversight Agency	Regional Trails	Urban Open Space	Aquatic Systems	Natural Lands	Farmlands	Working Forests
National Estuary Program - Puget Sound	EPA			X			
Cooperative Endangered Species Conservation Fund Grants: Various	USFWS			X	X		
Pacific Marine & Estuarine Fish Habitat Partnership	USFWS			X			
Forest Service Land & Water Conservation Fund	USFS	X		X	X		
Forest Legacy Program	USFS				X		X
Agricultural Conservation Easement Program	NRCS					X	
Regional Conservation Partnerships Program	NRCS					X	
Healthy Forests Reserve Program	NRCS						X
Conservation Reserve Program	FSA			X	X	X	
Emergency Watershed Protection Program	NRCS			X		X	
National Coastal Wetlands Conservation Grants	USFWS/ ECY			X			
Readiness & Environmental Protection Integration Program	DOD				X	X	

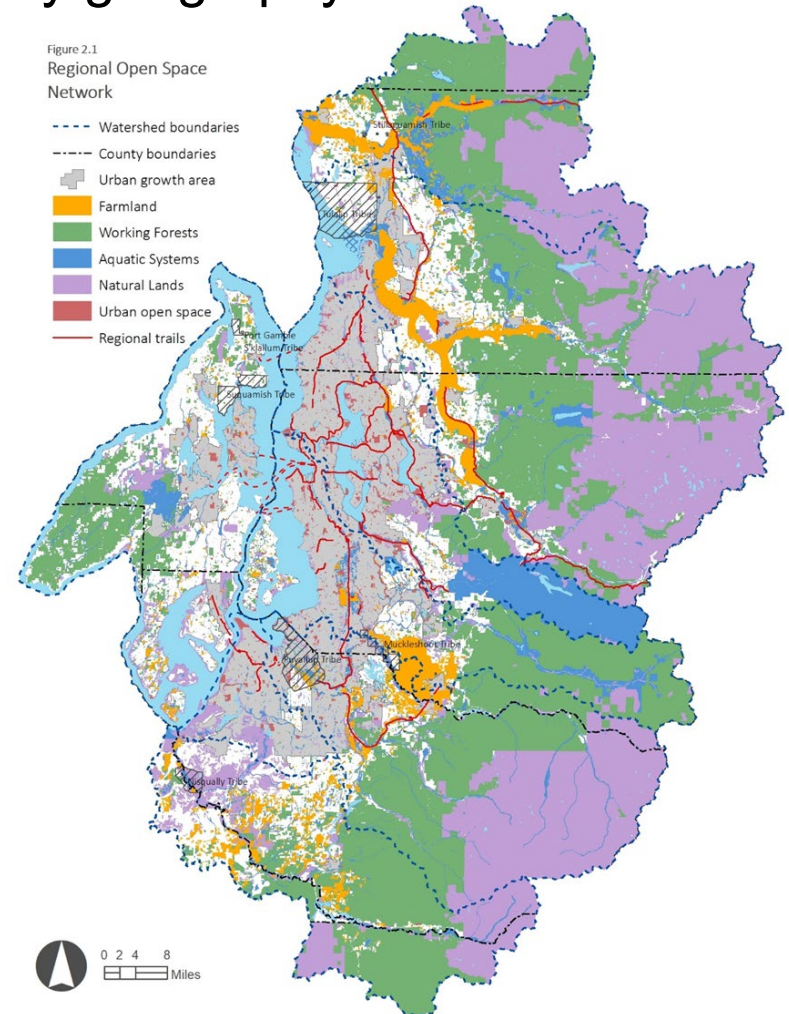


# What groups are already convening and coordinating?

- By open space type



- By geography



# Organizations with a Funding Role

Organizations	Regional Trails	Urban Open Space	Aquatic systems	Natural Lands	Farmland	Working forests
Floodplains by Design		X	X		X	
Stillaguamish Watershed Council			X	X		
Snohomish Basin Salmon Recovery Forum			X	X		
Snohomish Local Integrating Organization			X	X		
Snoqualmie Watershed Forum			X	X		
WRIA 8 Salmon Recovery Council			X	X		
WRIA 9 Watershed Ecosystem Forum			X	X		
Puyallup & Chambers Watershed Lead Entity			X	X		
Puyallup River Watershed Council			X	X	X	
West Sound Partners for Ecosystem Recovery		x	X	X	x	x
Hood Canal Coordinating Council			X	X		x
Alliance for a Healthy South Sound			X	X		
Puget Sound Salmon Recovery Council			X	X		
Puget Sound Regional Council	X					
Alliance for Puget Sound Natural Resources					X	
Puyallup Watershed Initiative: Agriculture Community of Interest					X	
King Co Land Conservation Initiative committees	X	X	X	X	X	X
King County Flood Control District			X			
Snohomish County Conservation Future Advisory Board			X	X	X	X
Pierce County Conservation Futures Citizens Advisory Board	X	X	X	X	X	X
Alliance for a Healthy South Sound			X	X		X

# Convening Organizations

Organizations	Regional Trails	Urban Open Space	Aquatic systems	Natural Lands	Farmland	Working forests
Floodplains for the Future			X	X	X	
Pierce County Agricultural Advisory Committee					X	
Pierce County Agriculture Roundtable					X	
Puyallup Farmland Strategic Conservation Partnership					X	
Snohomish Farmland Conservation Working Group					X	
Snoqualmie Fish, Farm, Flood			X	X	X	
Sustainable Lands Strategy					X	
Snohomish County Agricultural Advisory Board					X	
Puget Sound Conservation District Caucus - Better Ground		X	X		X	x
Darrington Forest Collaborative						X
Nisqually Community Forest						X
ReGreen the Green			X			
City Habitats		X				
WA Association of Land Trusts		X	X	X	X	X
Puget Sound Climate Preparedness Collaborative		x	x	x	x	x
Leafline Trail Coalition	X					
Emerald Alliance	X	X	X	X	X	X



# What individual entities are implementing the plan?

---

Counties

---

Tribes

---

State and Federal land managers

---

Ports & Utilities

---

Conservation District

---

Land Trusts/NGOs





# NGOs Implementing the Plan:

IMPLEMENTING ENTITIES	Regional Trails	Urban Open Space*	Aquatic systems	Natural Lands	Farmland	Working forests
Forterra			X	X	X	X
Trust for Public Land		X	X	X		X
The Nature Conservancy		X	X	X	X	X
The Conservation Fund			X	X	X	
Conservation Northwest				X		X
Washington Farmland Trust					X	
Bainbridge Island Land Trust			X	X		
Vashon-Maury Island Land Trust						
Nisqually Land Trust			X	X	X	X
Mountains to Sound Greenway	X		X	X		X
Great Peninsula Conservancy			X	X		X
Center for Natural Lands Management				X		
Hood Canal Salmon Enhancement Group			X	X		





# What is this information telling us?

## Well-trodden ground:

- Aquatic systems and natural lands are well covered
- Most convening groups work across more than one open space type; integration gets funded
- Many groups are convening about farmland protection in certain geographies

## Potential gaps:

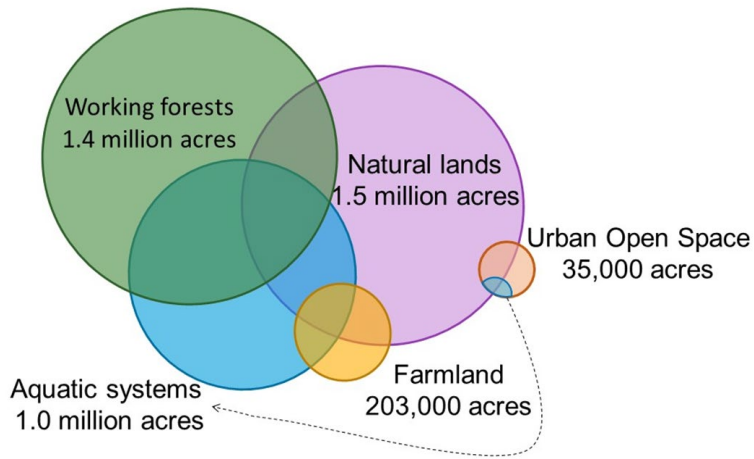
- **By Open Space Type**
  - Working Forest
  - Trails?
- **By Geography**
  - Kitsap County
- **By Protection Tool**
  - Are we fully utilizing incentives that keeps land private and protected?

## Advancing the work:

- Identifying policy changes where funding programs are misaligned with goals or acquisition is not allowed
- Developing County programs and incentives
- Using similar language, goals, framework
- Testing assumptions and tracking progress



Detailed information can be found at:  
<https://www.psrc.org/media/8697> (XLSX)



Farmland (Acres)	Working Forests (Acres)	Aquatic Systems (Acres)	Natural Lands (Acres)	Regional Trails (miles)
104,000	183,200	93,700	81,700	300

Figure 2.1  
Regional Open Space  
Network

