

# Equity Tracker

Regional Staff Committee

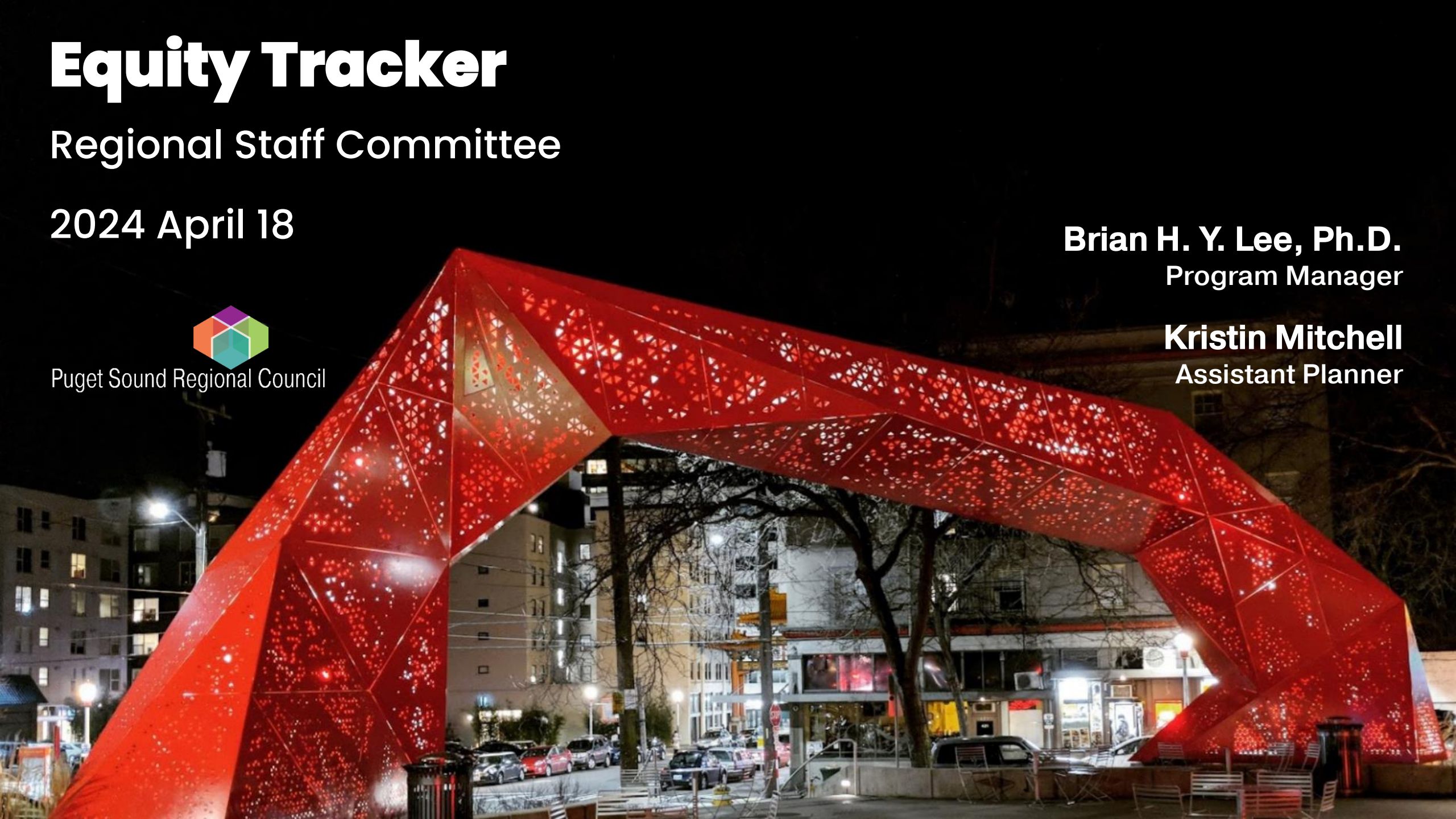
2024 April 18



Puget Sound Regional Council

**Brian H. Y. Lee, Ph.D.**  
Program Manager

**Kristin Mitchell**  
Assistant Planner





## The Equity Tracker Project

- Background & purpose
- Key product elements
- Co-creation with Equity Advisory Committee

## Project Status

- Themes & indicators
- Demo

## Next Steps

# Background & purpose



# Requests for technical support on equity



- PSRC, partners, & stakeholders working to advance equity, address disparities
- Feedback includes need for data to help answer key questions:

What are the disparities in life outcomes for different people?

What progress is the region making in closing equity gaps?

How can people hold PSRC and others accountable for their work?

Are plans and policies in the region collectively working in the right direction?

# Existing equity-related resources



Displacement Risk Mapping  
Assessing risk of displacement in the central Puget Sound region.

Washington Tracking Network  
A Source for Environmental Public Health Data

State

Regional Affordable Housing Dashboard  
An effort of the King County Affordable Housing Committee

County

Opportunity Mapping Report  
An assessment of opportunity across the central Puget Sound region.

Region

Central Puget Sound Demographic Profile

Tacoma, Washington

TACOMA EQUITY INDEX

Local

DISTRIBUTION OF DATA WITHIN TACOMA

VOTER PARTICIPATION 65%

HOUSEHOLDS WITH INTERNET 89%

HEALTHY FOOD AVAILABILITY

Learn more

Legacy of Structural Racism

Get started

**Data gap:** Comprehensive tool to measure disparities & track equity performance across the central Puget Sound region



## Capacity Building

Learning Opportunities  
Prioritizing Equity  
Inclusive Procurement  
Hiring and Retention



## Community Engagement

Equity Advisory Committee  
Anti-Displacement Organizations  
Inclusive Engagement Guidance



## Data and Research

Equity Analyses  
**Equity Tracker**  
Legacy of Structural Racism  
Data & Analysis



## Best Practices

Equity Impact Tool  
Equity Planning Resources

# Key product elements



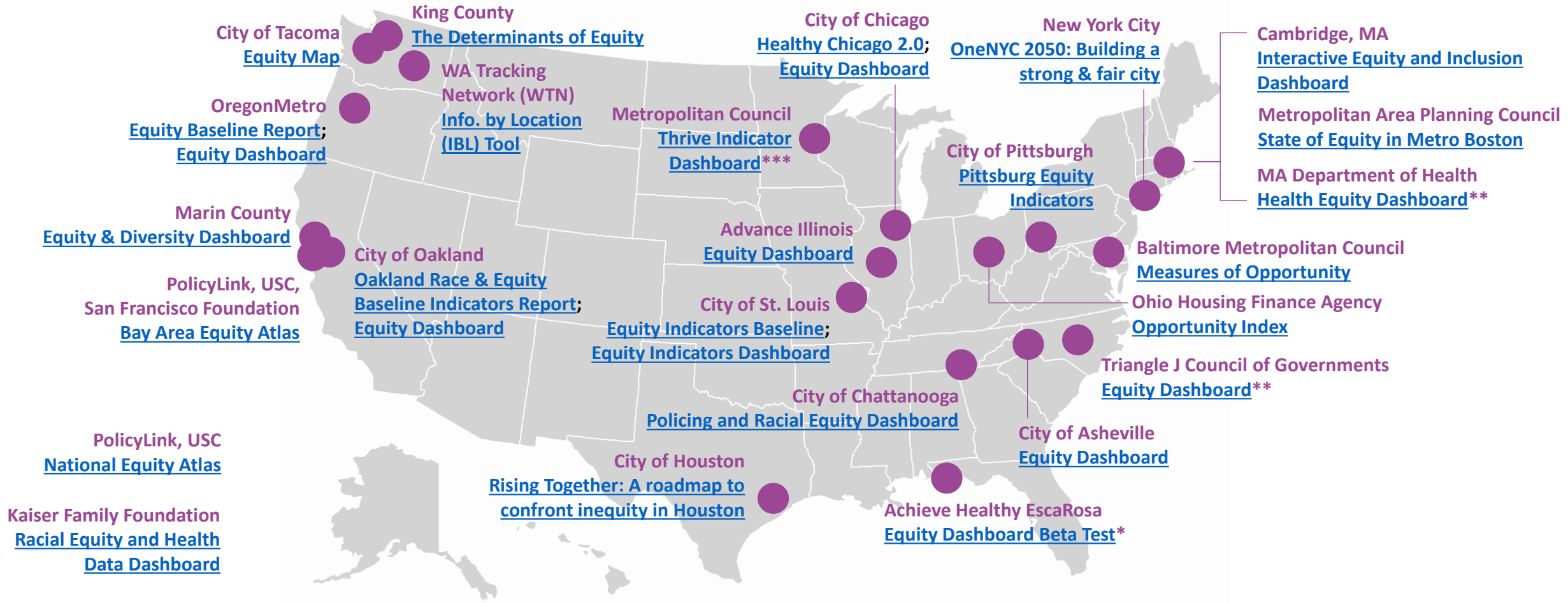


## Three primary goals

- Measure life outcomes & highlight disparities between communities
- Track performance over time in closing equity gaps
- Publicly hold PSRC & its partners accountable



# Review: Examples of equity data tools



\*The equity dashboard is no longer available (in Jan 2022), but the outcomes to measure can be found in the [data page](#).

\*\*The equity dashboard is no longer available (in April 2024)

\*\*\*Currently being worked on (in April 2024)

# 4 key takeaways from reviews



## 1) Direct connection to specific programs & plans

- Use data to measure/track equity progress

→ *PSRC Equity Tracker foundation based on VISION 2050*

## 2) Systematic & rigorous evaluation of data & sources

- Trusted source? Sound methods?
- Ease of access?
- Regularly updated?
- About people & places within our region?

→ *Use technical rubric to score & rank data candidates*

# 4 key takeaways from reviews



## 3) Uses: provide info (primary), share data (secondary)

- Public display of equity outcomes & disparities
- Support stakeholders with equity-related data

→ *Equity Tracker aims to do both, prioritize info provision first*

## 4) Complementary info to data can enhance tool

- Some dashboards contain data & little else
- Others are more comprehensive

→ *Provide context & interpretations, point to solutions*

# Co-creation with Equity Advisory Comm.



# Engagements with EAC members



- 2022 FEB** EAC meeting: Introduced Equity Tracker  
Determined support, areas of interest, ways to interact
- APR** EAC meeting: Discussed key elements
- MAY** Members started review of draft webpages
- AUG** End of feedback period (new PSRC website launched)
- OCT** EAC meeting: Discussed feedback & priorities
- 2023 JUNE** EAC meeting: Showed updates & incorporation of feedback
- 2024 APR** EAC meeting: Project status & timeline

# Project status



# Equity Tracker themes & indicators



## THEMES

(sections in VISION 2050)

## INDICATORS

Climate Change

Flood risk

Communities & Health\*

Cardiovascular disease mortality

Health insurance

Life expectancy

SNAP participation

Economy

Educational attainment

Kindergarten readiness

Household income

Environment

Toxic releases

Tree canopy cover

\* Refers to the *Development Patterns* section in VISION 2050

# Equity Tracker themes & indicators



## THEMES

(sections in VISION 2050)

## INDICATORS

### Housing

Access to affordable rent  
Homeownership  
Renter cost burden  
Renter overcrowding

### Public Services

Imprisonment\*\*  
Internet access

### Transportation

Distance to high-capacity transit  
Sidewalk completeness



# Equity Tracker themes & indicators



## THEMES

(sections in VISION 2050)

Climate Change

Economy

Regional Collaboration

Transportation

## INDICATORS UNDER EXPLORATION

Fire risk

Heat risk

Access to living wage jobs

Voter participation

Safety

# Equity Tracker demo



## Equity Tracker

[Home](#) > [Our Work](#)

[Share](#)

### Our Work

[Data](#)

[Economy](#)

[Environment](#)

[Equity](#)

[Funding](#)

+

[Growth Management](#)

[Housing](#)

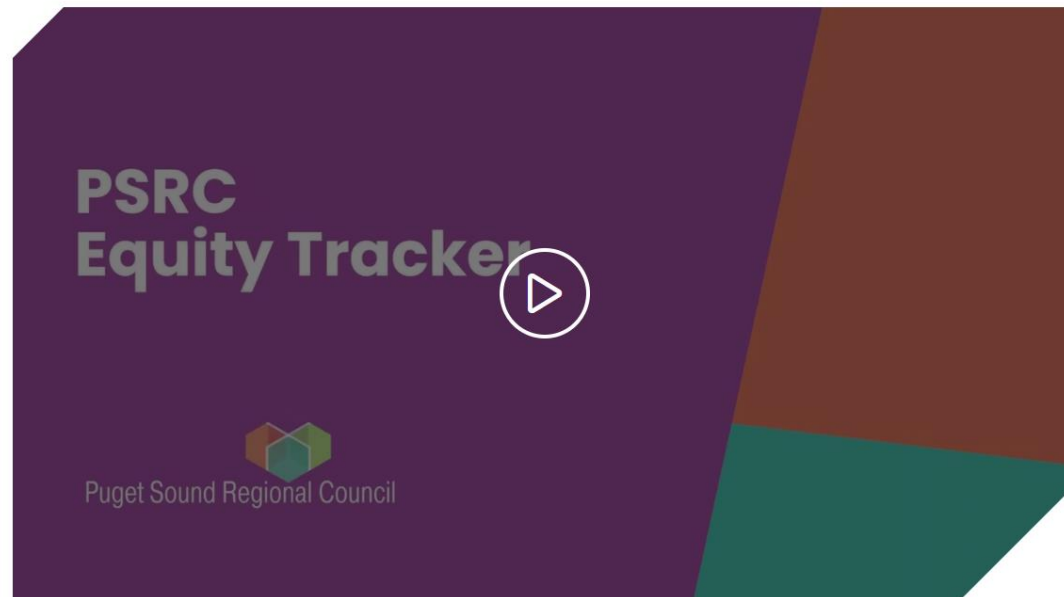
[Safety](#)

[Transportation](#)

[Equity Tracker](#)

## Get The Facts About Racial Equity

Racial and ethnic disparities in key quality of life indicators have persisted in the Central Puget Sound region, with Black, Indigenous, and People of Color faring worse compared to White individuals. Robust data and information are essential to developing strategies to build an equitable region.



# Next steps



# Immediate project timeline



- 2024 APR** EAC & RSC meetings: Project information  
Equity Tracker “soft” launch
- MAY** Website/tool refinements
- JUNE** GMPB meeting: Project information  
Executive Board meeting: “official” launch  
Work with EAC members to get their feedback
- JULY** Start work on Census data & related updates
- FALL** Circle back with EAC to discuss development priorities

# Thank you!

**Brian H. Y. Lee, Ph.D.**  
Program Manager  
[blee@psrc.org](mailto:blee@psrc.org)

**Kristin Mitchell**  
Assistant Planner  
[kmitchell@psrc.org](mailto:kmitchell@psrc.org)



Puget Sound Regional Council

