

Regional Transportation Plan

Freight Advisory Committee- April 10, 2024



Puget Sound Regional Council

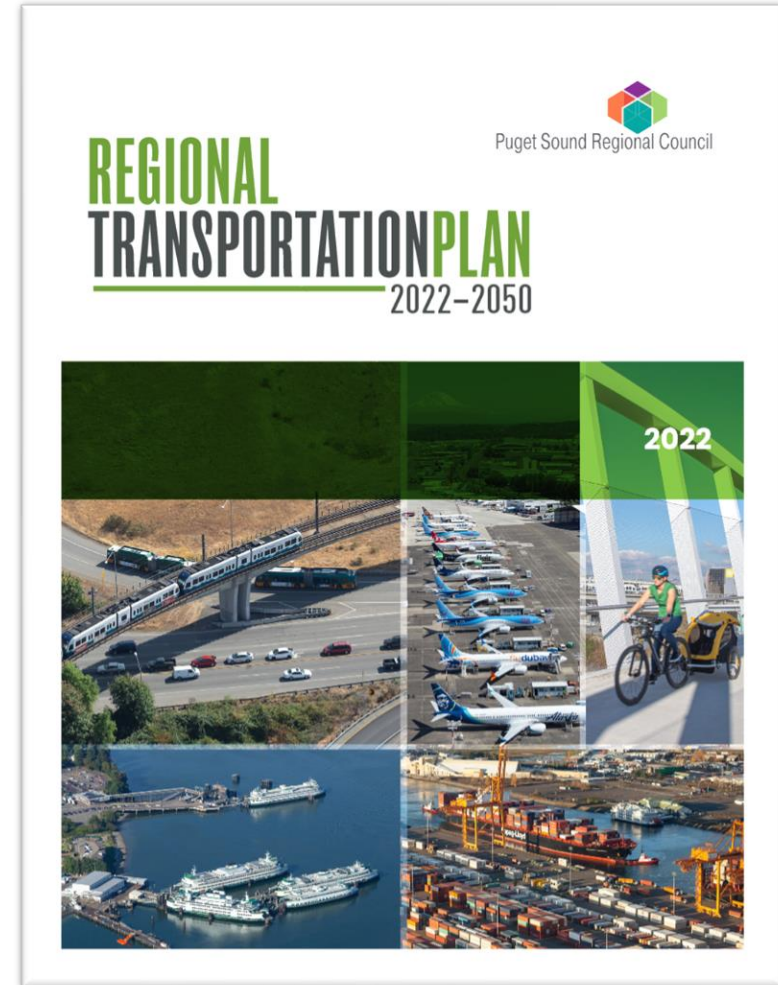


We are leaders in the region to realize equity for all. Diversity, racial equity and inclusion are integrated into how we carry out all our work.

psrc.org/equity

Regional Transportation Plan: Requirements

- Minimum 20-year planning horizon
- Updated every 4 years
- Integrated multimodal transportation system
- Reasonable financial strategy to fund investments
- Latest available estimates for growth, travel, and economic activity
- Performance measures and targets
- Address federal planning factors



VISION 2050 Implementation



2026 Regional Transportation Plan



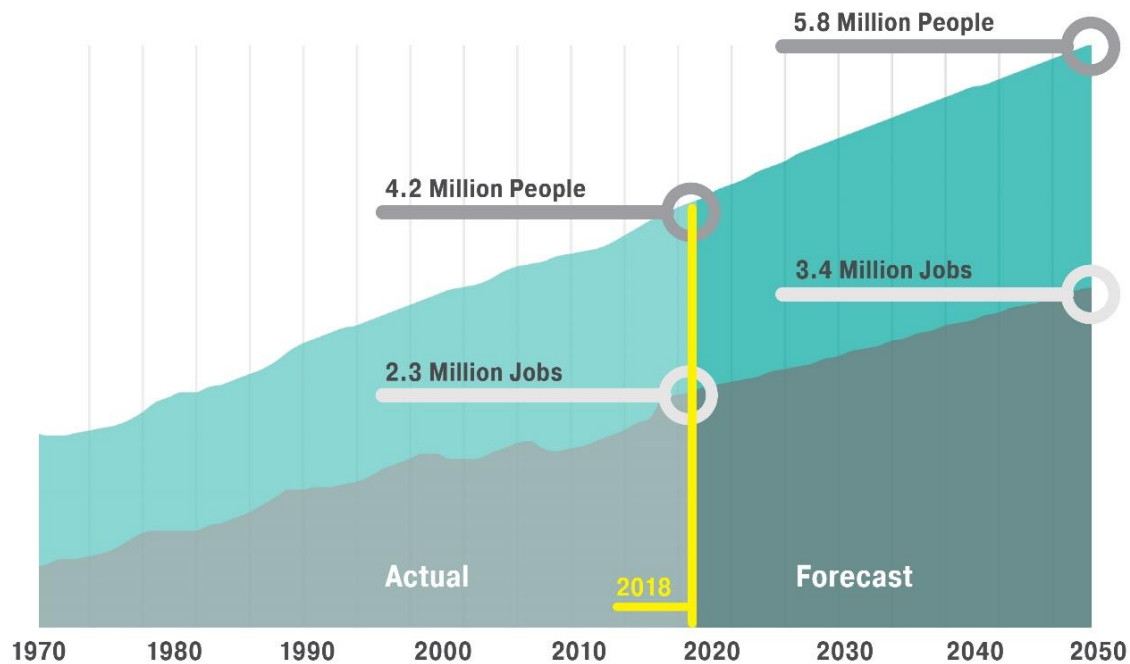
- Builds from VISION 2050
- Objectives:
 - Make progress on existing challenges, address current and future needs of the transportation system
 - Provide better data and analysis to support local investment planning (2024 comprehensive plans)
 - Plan for long-term system investments to accommodate future growth
 - Improve existing system, big picture thinking on future investments (aviation, rail, ferries)

Regional Transportation Plan

The region continues to grow:

~1.6 million people by 2050

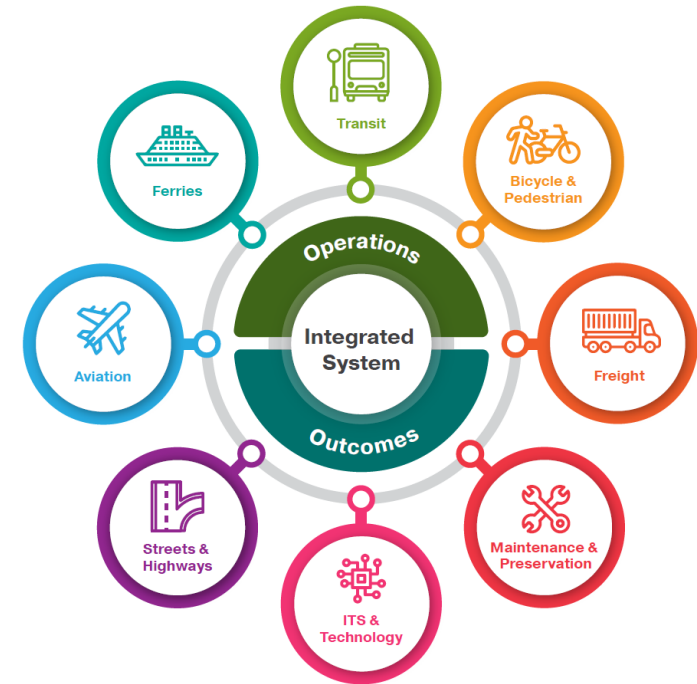
~1.1 million jobs by 2050



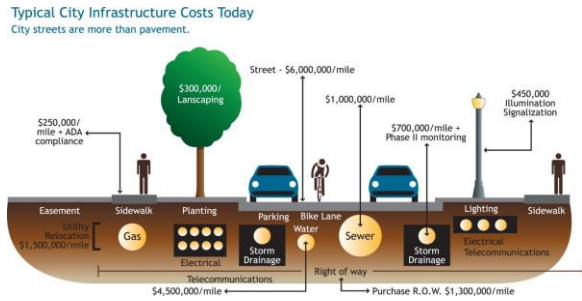
Source: PSRC, 2018 Regional Macroeconomic Forecast

Board adopted focus areas:

- Access to transit
- Safety
- Equity
- Climate
- Local agency needs
- Forward thinking/future investments



Programs included in the plan



Counties



Cities



Local Transit



Sound Transit



State Ferries



State Highways



Other Regional

Key Planning Work – System Needs and Opportunities

PSRC's Transportation System Conditions Visualization Tool

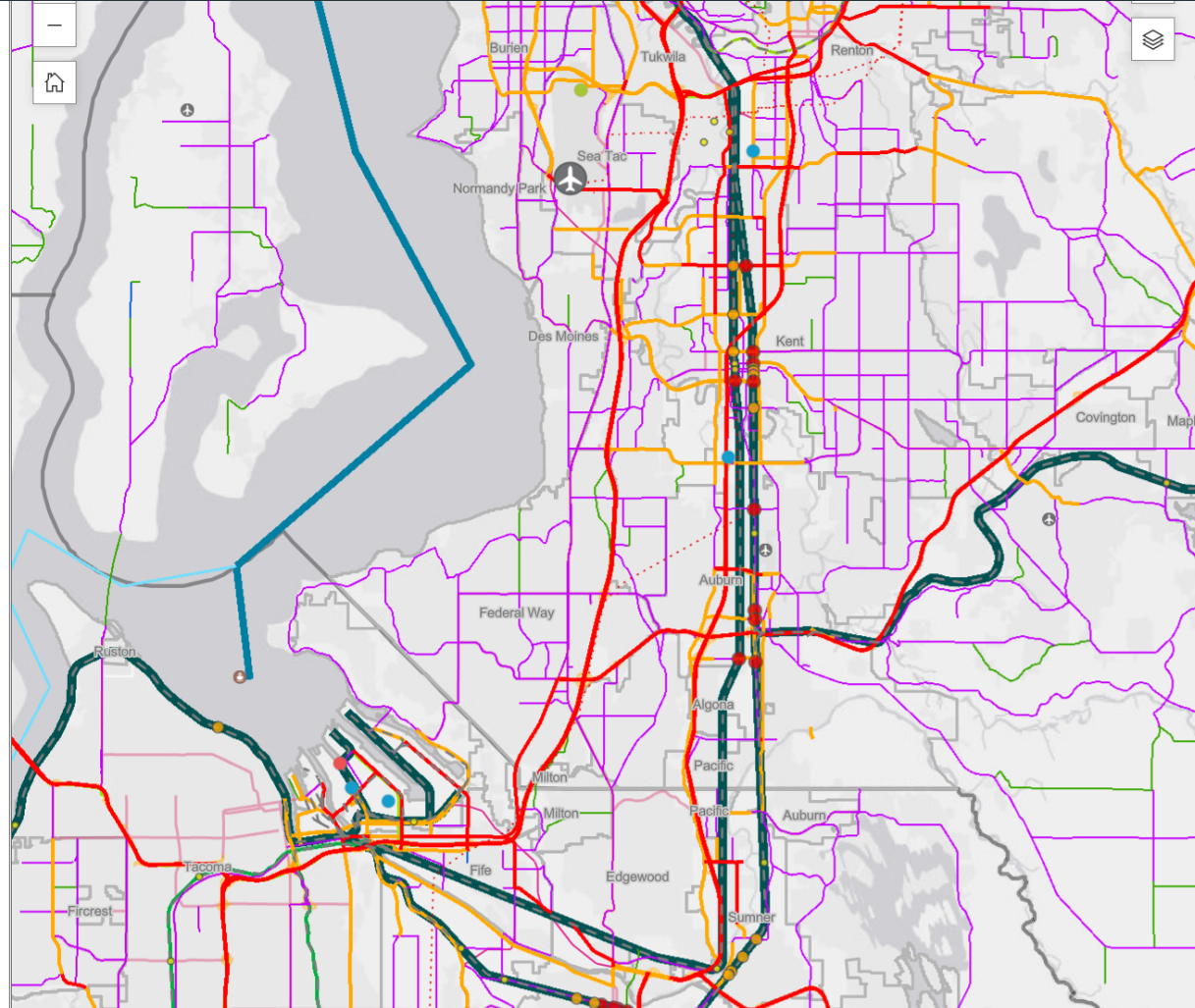


2022-2050

REGIONAL TRANSPORTATION PLAN

Full System (All Layers)

- (Expand to Select)
- Public Transportation
- Freight Assets
 - At-Grade Crossings
 - Intermodal Facilities
 - Railways
 - Olympic Pipeline
 - Major Airports
 - Regional Airports
 - Deep Water Ports
- Freight & Goods Transportation System
 - National Highway Freight Network
 - Strategic Highway Network



At-Grade Crossings

- Improvement Priority Ranking
- > 100 to 302
 - > 50 to 100
 - 1 to 50

Intermodal Facilities

- Port
- Rail
- Cargo/Airport

Railways

-

Olympic Pipeline

-

Major Airports

-

Regional Airports

-

Deep Water Ports

-

<https://www.psrc.org/planning-2050/regional-transportation-plan/transportation-system-visualization-tool>



What's in the Plan?

- **\$300 billion of investment over the next 28 years**
 - 56% will maintain, preserve and operate the system
 - 70% of the plan's system improvements are for investments in local and regional transit
 - 84% of the plan funded with forecast current law revenues

What has been happening since 2022 Plan Adoption?

- Safety
- Equity
- Climate
- Transit access
- Transportation system inventories

Safety: Work to Date

- **PSRC held first Regional Safety Summit June 2023**
 - Purpose was to convene stakeholders to advance the conversation on how to achieve zero roadway fatalities and serious injuries
 - Feedback from Summit will inform development of the Regional Safety Action Plan
- **PSRC is developing a Regional Safety Action Plan due in early 2025 under the Safe Streets and Roads for All grant program**
 - Up to 25 jurisdictions will also develop local safety action plans under SS4A, in coordination with the regional program or through individual grants



FHWA Equity Pilot

- Goal was to develop innovative ways to improve equity in PSRC's project selection process
- EAC recommendations adopted into 2024 project selection process

FTA Equity Formula Allocation

- New focused and intentional methodology to distribute regional FTA funds to improve transit services for equity focus area (EFA) populations

Building from VISION 2050 and the RTP:

- 2030 climate analysis and sensitivity testing
- Convened a climate expert review panel

Partnership efforts with Puget Sound Clean Air Agency, other partners:

- Updated regional GHG emissions inventory
- Climate Pollution Reduction Grant Program (CPRG) regional climate planning
- Regional EV Clearinghouse



Preparation and Next Steps: RTP (2026-2050)



Ongoing Public Outreach Informs the Plan

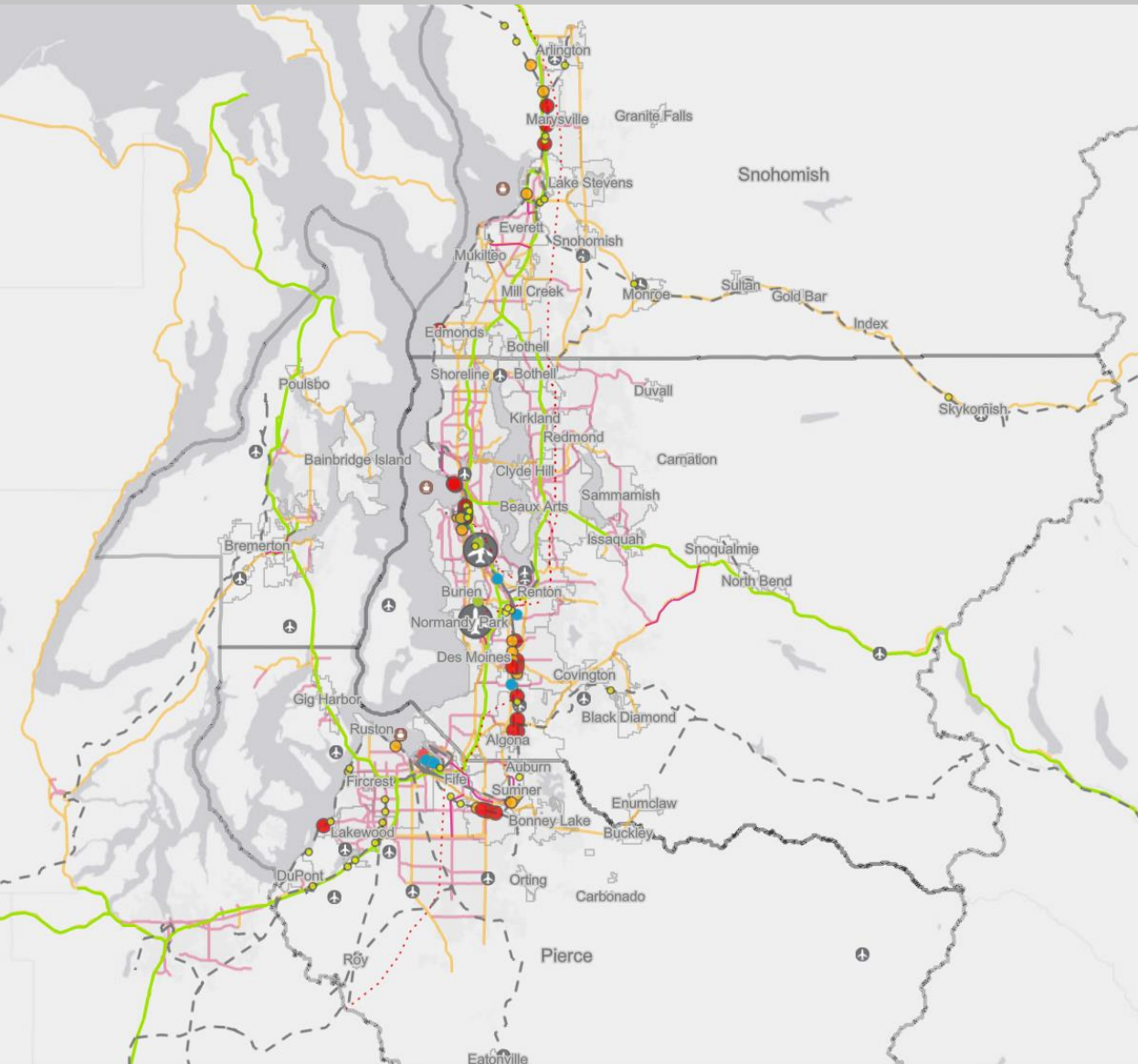
What topics are on the TPB's mind?



- Freight is an integral part of the region’s multimodal transportation system
- Accommodating freight traffic should be explicitly addressed in transportation planning and programming, including land use policy, development regulations, and roadway design and pavement standards
- Context matters, and potential strategies and projects to address freight issues are different depending on the setting
- Local jurisdictions should actively engage to help address truck parking issues
- PSRC will continue to lead and participate in forums that foster regional and statewide cooperation on freight



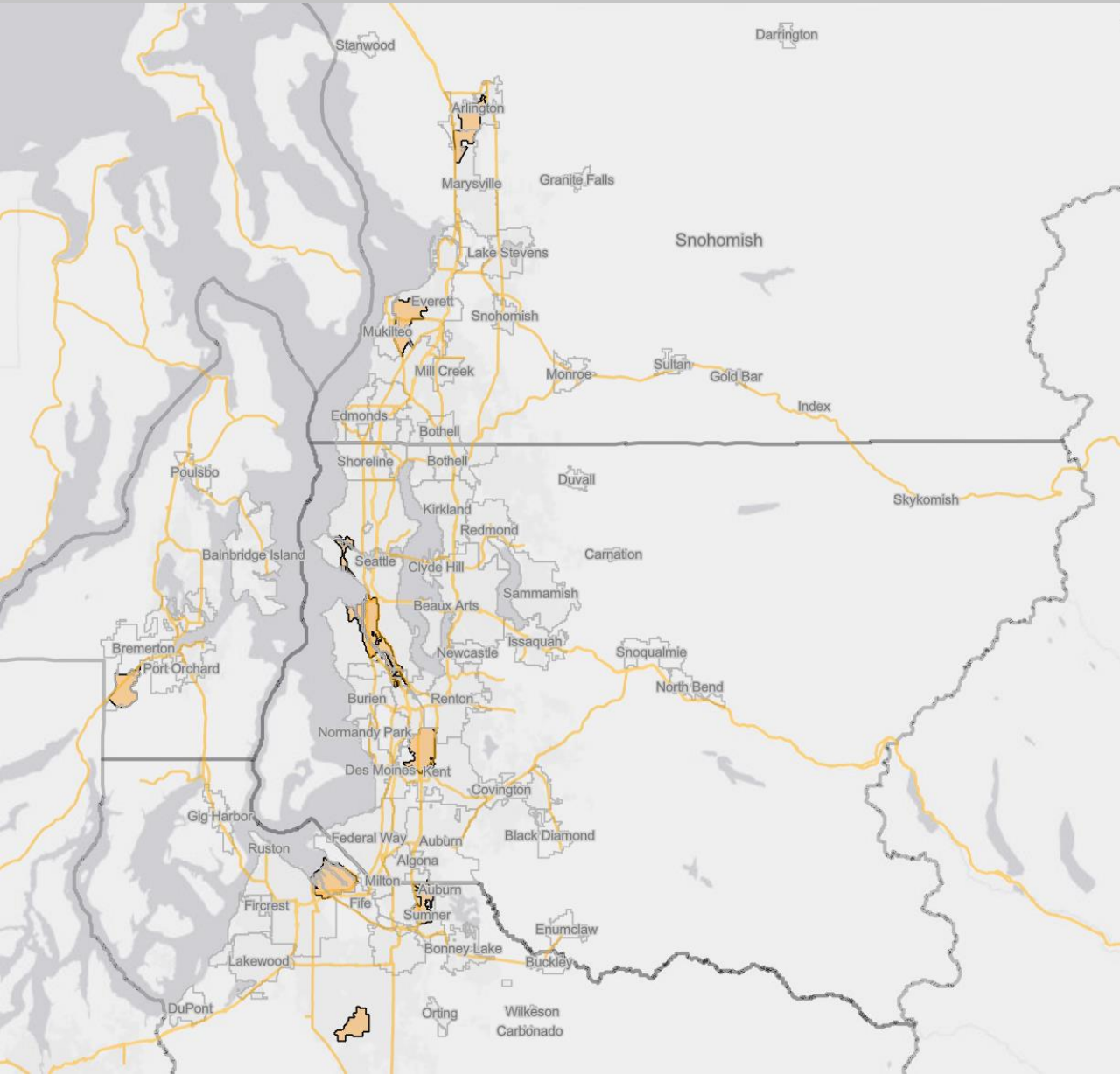
Freight Assets Inventory



- Freight & Goods Transportation System (FGTS)
- Railways & At-Grade Crossings
- Marine Ports & Airports
- Intermodal Facilities
- National Highway Freight Network & Strategic Highway Network
- Olympic Pipeline



Other Information Relevant to Freight



- Manufacturing/Industrial Centers & Urban Centers
- Traffic Congestion & Bridge Conditions
- Demographic Information
- Planned and Programmed Transportation Projects



- System Integration
- Preservation & Maintenance
- Truck Parking

FAC working group on each topic provided recommendations to inform RTP messaging and policy

What should freight focus topics be for 2026 RTP?