

# VISION 2050 Overview

Equity Advisory Committee | April 4, 2024



Puget Sound Regional Council



*We are leaders in the region to realize equity for all. Diversity, racial equity and inclusion are integrated into how we carry out all our work.*

[psrc.org/equity](https://psrc.org/equity)



# Overview

- Local Planning Framework
- VISION 2050
- Q & A





# Committee Questions

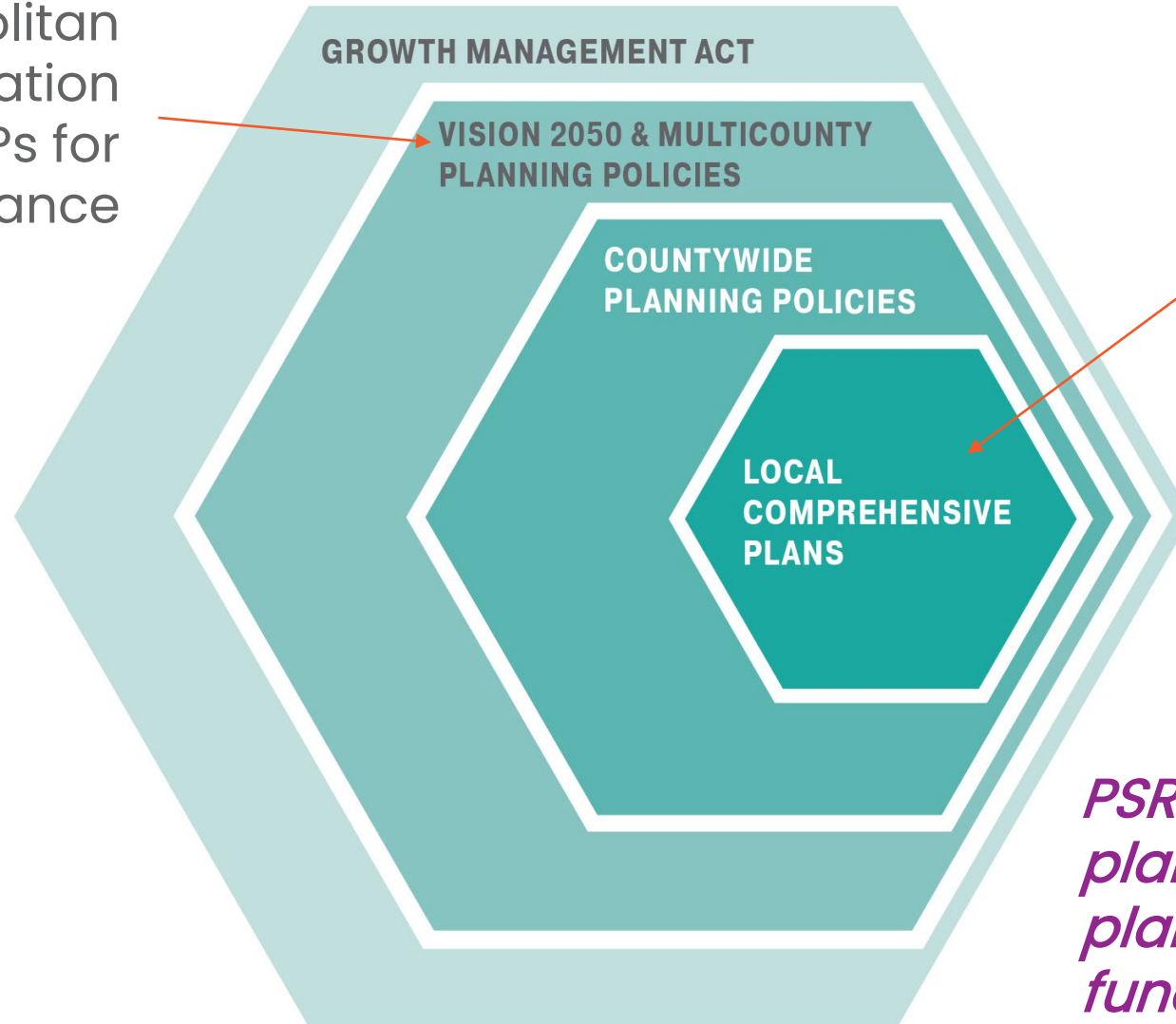
- What aspects of VISION 2050 would you like to learn more about?
- What parts of VISION 2050 do you see as most critical for addressing equity?



# Planning in Central Puget Sound



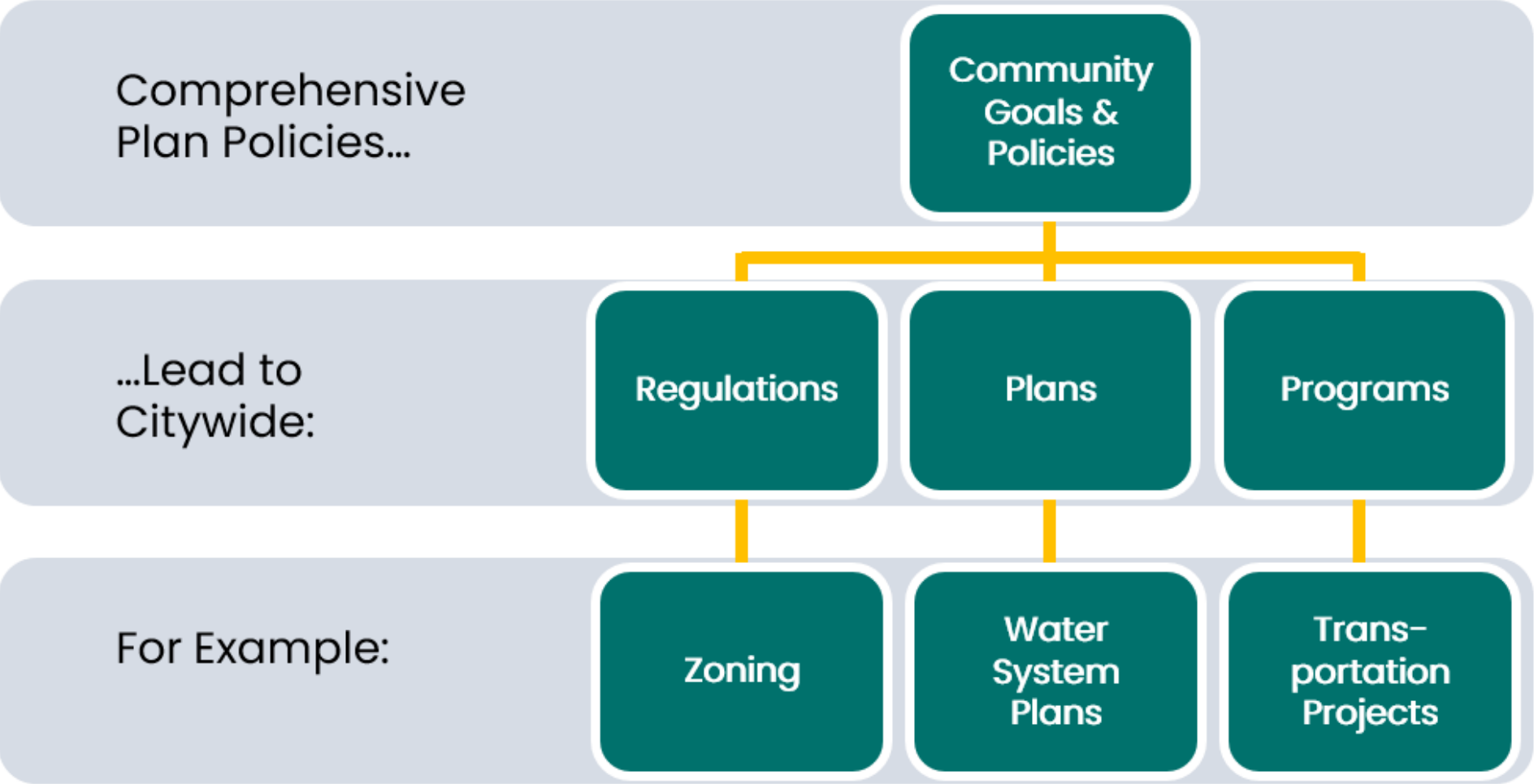
PSRC as the metropolitan planning organization (MPO) creating MPPs for regional guidance



Local jurisdictions prepare plans that must be consistent with multicounty & countywide policies

*PSRC certifies countywide planning policies and local plans, which determines funding eligibility*

# Comprehensive Planning



More on comprehensive planning at May EAC

Adapted from City of Bellevue

# Integrated plan for sustainable development

REGIONAL POLICY DIRECTION

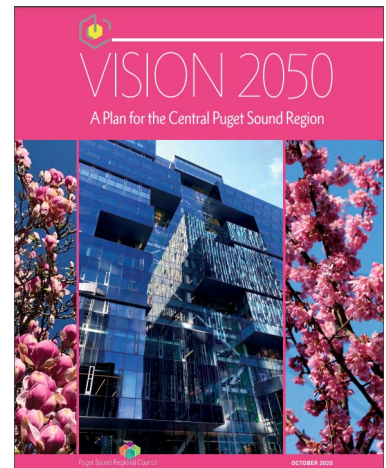
VISION 2050

—Multicounty Planning Policies—  
—Regional Growth Strategy—

DETAILED FUNCTIONAL IMPLEMENTATION PLANS

Regional Transportation Plan  
—Metropolitan Transportation Plan—

Regional Economic Strategy  
—Comprehensive Economic Development Strategy—



# VISION 2050 works to...



-  Increase **housing** choices and affordability
-  Provide **opportunities** for all
-  Sustain a strong **economy**
-  Significantly reduce greenhouse gas **emissions**
-  Keep the region **moving**
-  Restore the health of **Puget Sound**
-  Protect a network of **open space**
-  Growth in **centers** and near **transit**
-  Act **collaboratively** and support **local efforts**

# What's new in VISION 2050?

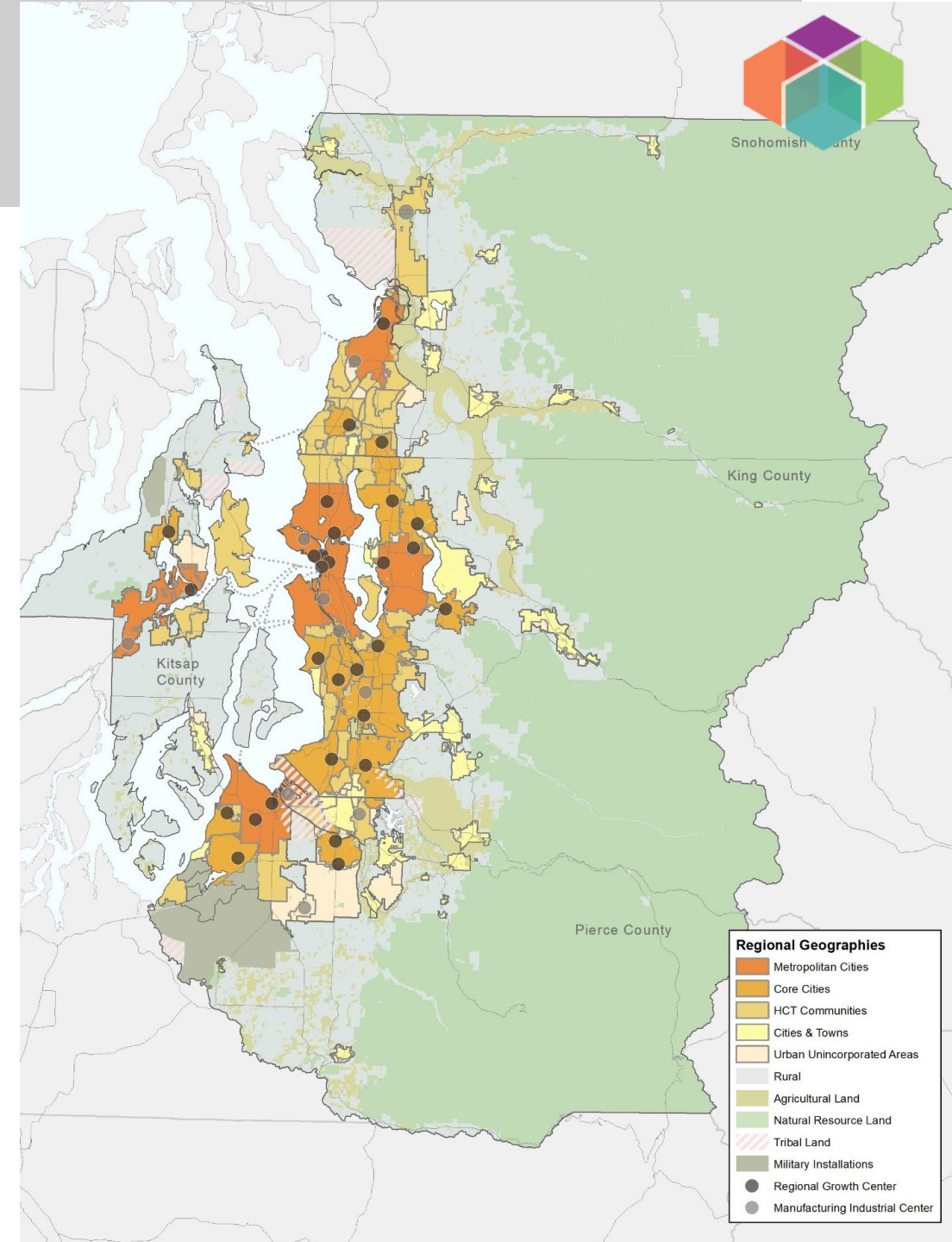


- Extends planning horizon to **2050**
- Updated growth strategy and aims for **more growth near transit**
- Increases recognition of **Tribes**
- New chapter on **climate change**
- Directs a **regional housing strategy**
- Directs a **regional equity strategy** and consideration of forming an equity advisory group



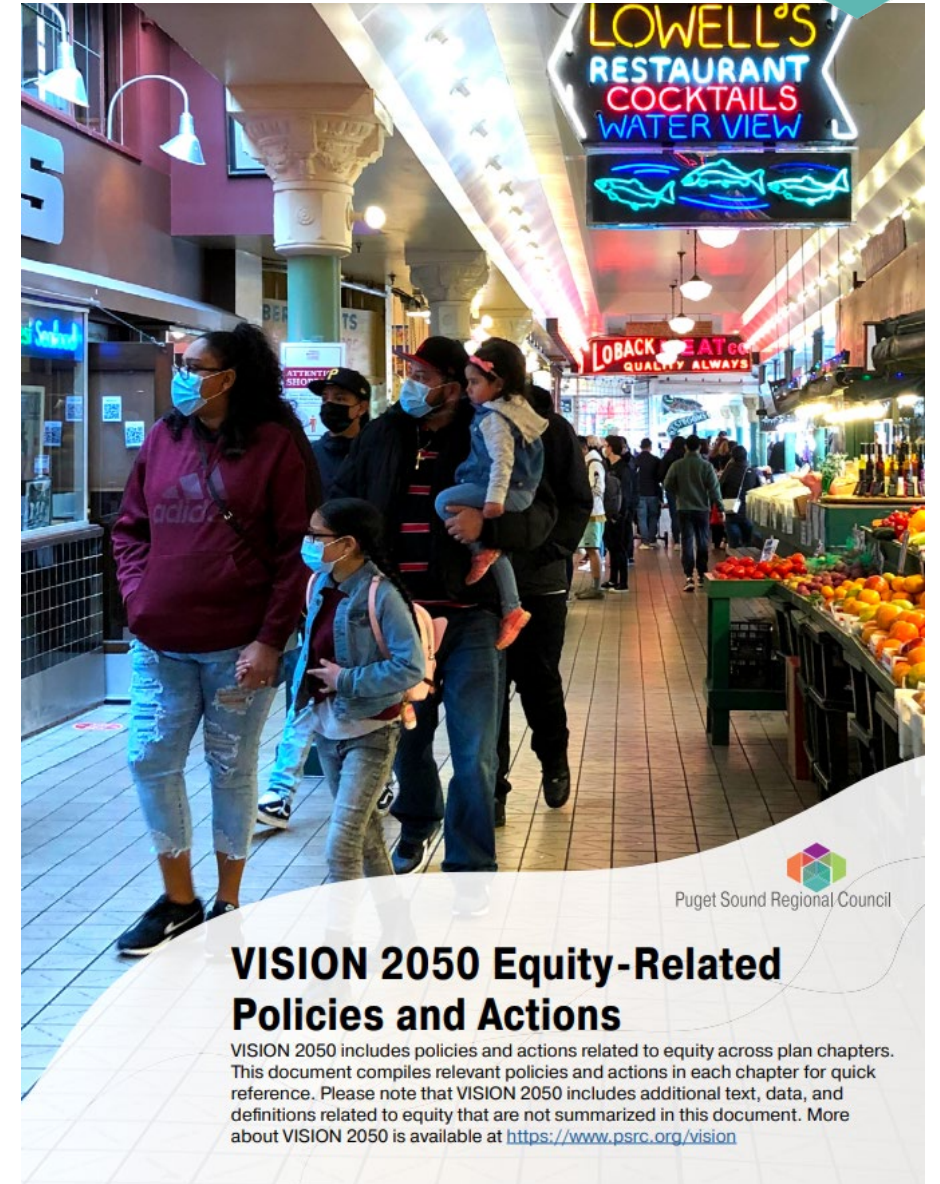
# Regional Growth Strategy

- Regional strategy where and how to grow
- Goals:
  - Focus growth in cities and centers
  - Diversity of communities
  - Preserve farms and forests
- 65% of region's population growth and 75% of employment growth in regional growth centers & near high-capacity transit



# Equity in VISION 2050

- Expanded focus in plan
- Actions and policies across all chapters
- Action to develop Regional Equity Strategy, EAC
- Equity analysis included in environmental review
- Displacement risk mapping



# Regional Equity Strategy

All Resources Located Here:

<https://www.psrc.org/equity>

The Strategy includes a suite of resources co-created with the Equity Advisory Committee. It will provide guidance to help members and staff work towards the region's equity goals.



## Community Engagement

- ▶ Equity Advisory Committee
- ▶ Anti-Displacement Organizations Report
- ▶ Equitable Engagement Guidance



## Capacity Building

- ▶ Learning Opportunities
- ▶ Prioritizing Equity
- ▶ Inclusive Procurement
- ▶ Hiring and Retention



## Best Practices

- ▶ Racial Equity Impact Assessment
- ▶ Equity Planning Resources



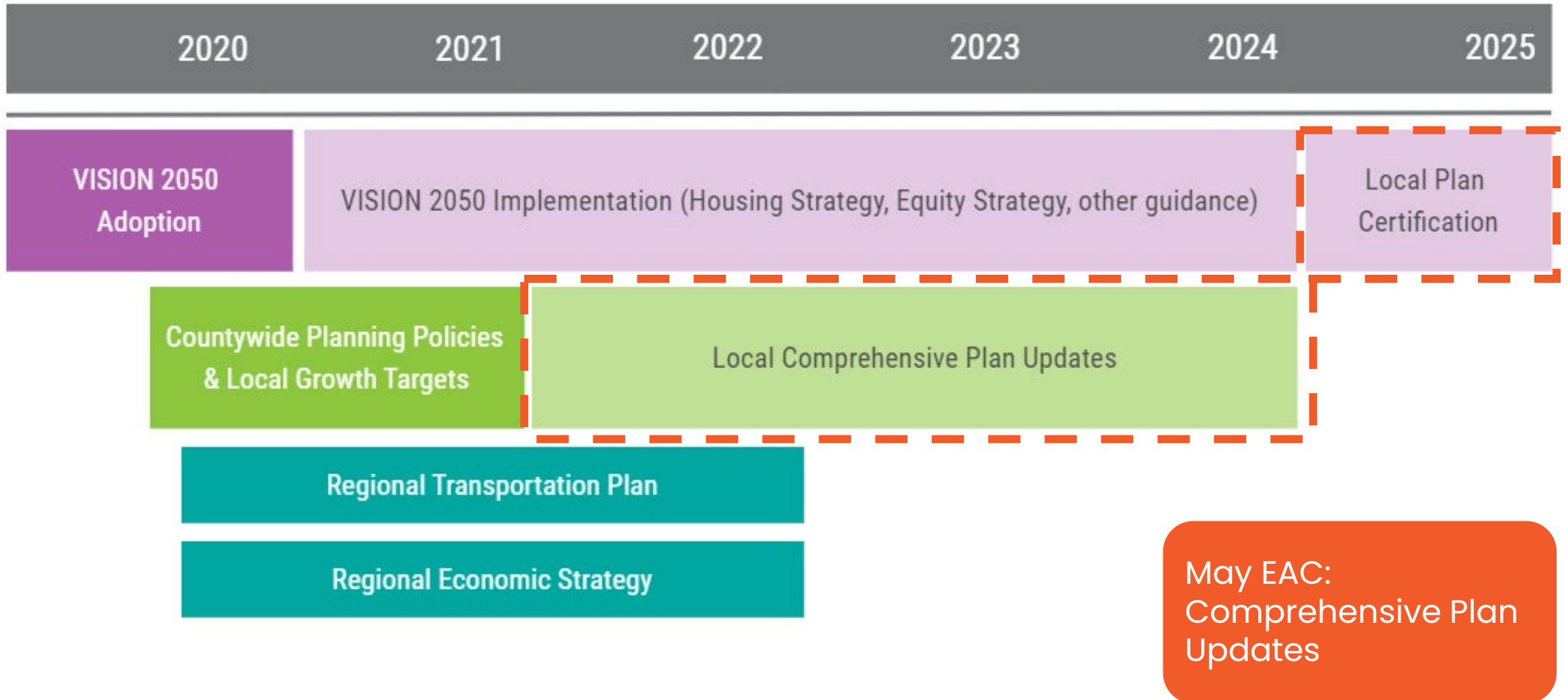
## Data and Research

- ▶ Equity Tracker
- ▶ Data and Analysis
- ▶ Puget Sound Trends
- ▶ Legacy of Structural Racism Interactive Report



# VISION 2050 Informs Local and Regional Plans

## Upcoming Planning Work



# Questions

The background of the slide is a scenic photograph. In the foreground, there are concrete steps leading up a grassy hill. In the middle ground, a person is walking on a path that winds through a park-like area. In the background, a city skyline is visible across a body of water, with the sun setting or rising behind the clouds, creating a golden glow over the scene.

- What aspects of VISION 2050 would you like to learn more about?
- What parts of VISION 2050 do you see as most critical for addressing equity?



# Thank You

Liz Underwood-Bultmann, AICP  
Principal Planner  
[LUnderwood-Bultmann@psrc.org](mailto:LUnderwood-Bultmann@psrc.org)

Paul Inghram, FAICP  
Director of Growth Management  
[PInghram@psrc.org](mailto:PInghram@psrc.org)

