

# ***Updates on Regional Data Inventories***

Bicycle Pedestrian Advisory Committee - March 12, 2024



Puget Sound Regional Council

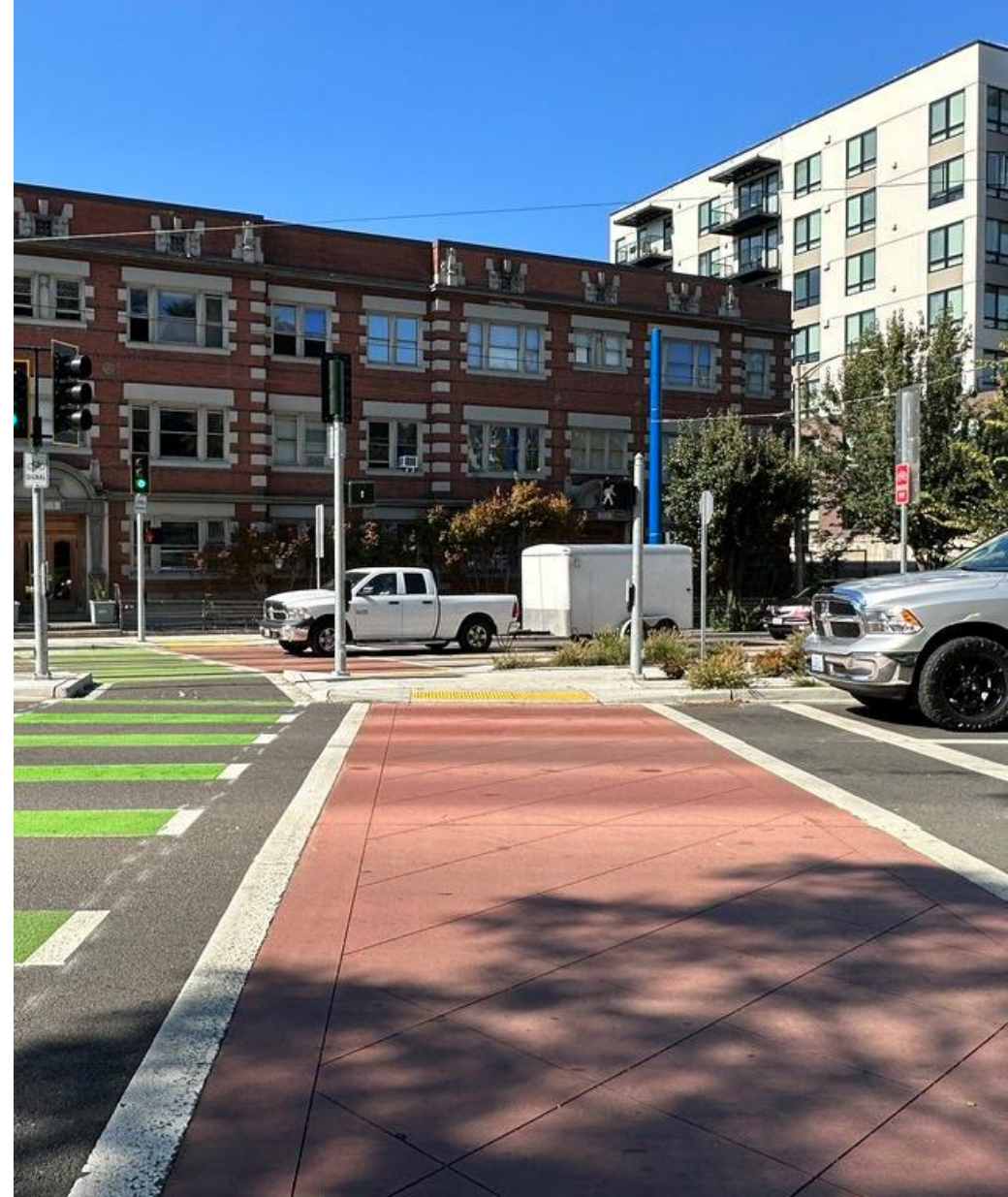


*We are leaders in the region to realize equity for all. Diversity, racial equity and inclusion are integrated into how we carry out all our work.*

[psrc.org/equity](https://psrc.org/equity)

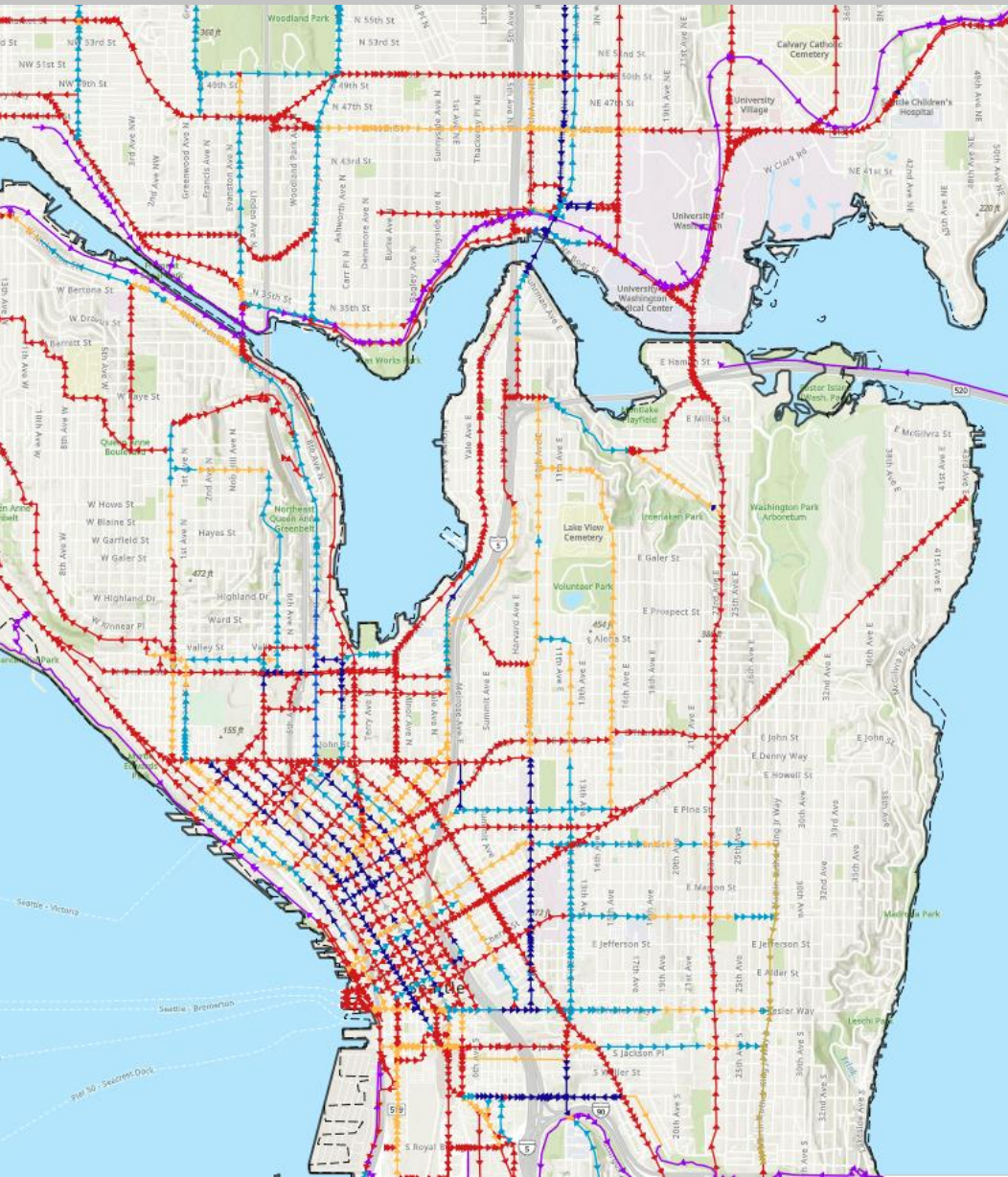
# ***Today's Presentation***

- ✓ Ped/bike facility inventory update
- ✓ MOD inventory update
- ✓ Ped/bike policies & regulations





# Facility Inventory Overview



- The regional pedestrian and bicycle facility inventory provides **baseline data** for informing regional planning.
- Per the **regional thresholds**, the inventory includes:
  - Ped/bike facilities on or adjacent to arterial roadways
  - Shared use paths on separate rights-of-way connecting destinations.
- This update will ensure data remains **accurate and current** since the last update in 2020.





# ***Inventory Update Work Program***

1) Revise the current inventory to account for revised typology.

➤ **Complete**

★ 2) Gather feedback from local partners on current inventory.

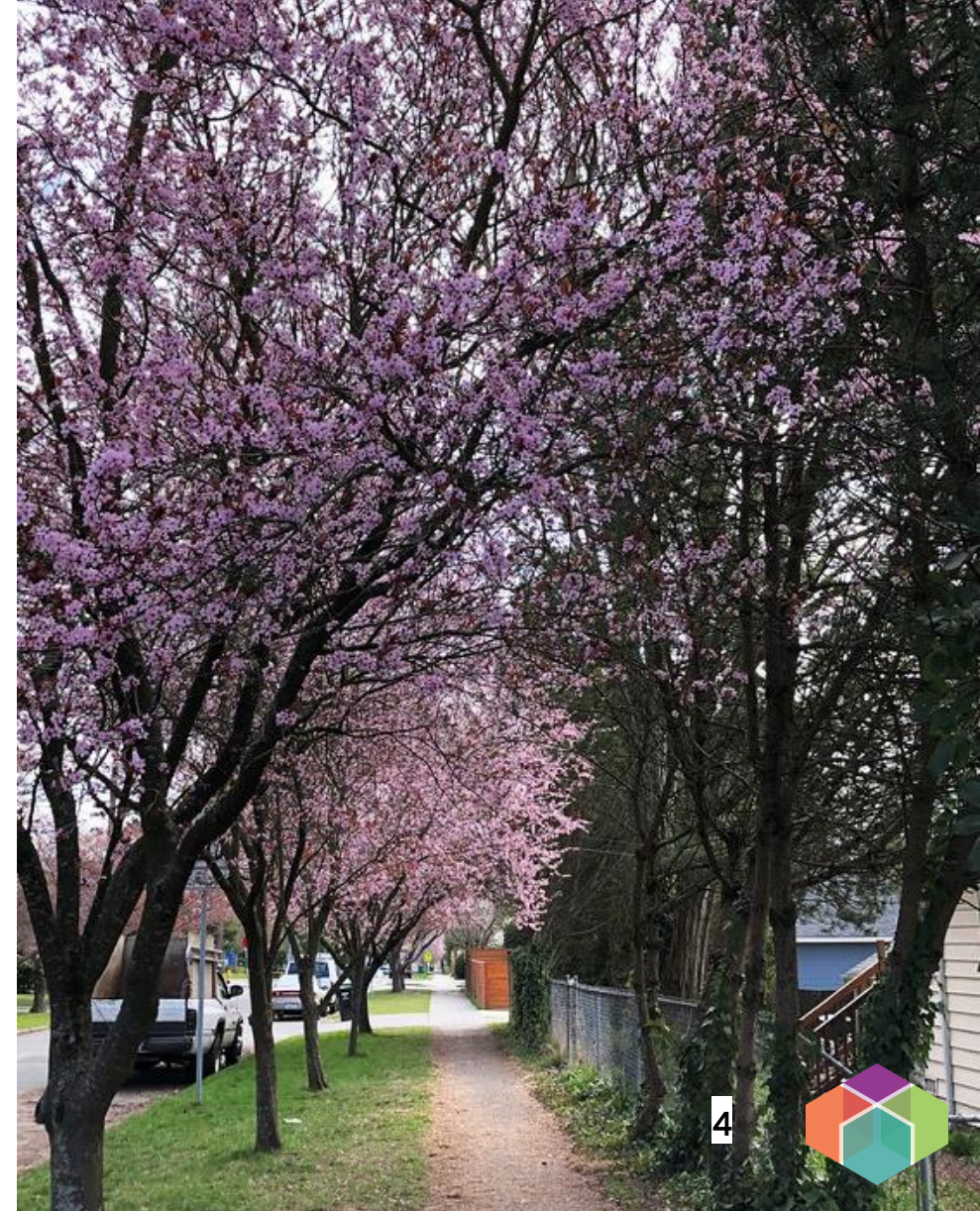
➤ **Q4 2023 – Q1 2024**

★ 3) Update the inventory based on feedback received.

➤ **Q1 2024**

4) Final jurisdictional review and finalize inventory.

➤ **Q2 2024**





# Jurisdictional Feedback



- In November 2023, PSRC sent out a **request for jurisdictional feedback** using interactive web maps.
- As of March 2024, PSCR has received **completed reviews from 92%** (79 out of 86) of cities and counties
- Responses **outstanding** from:
  - Algona
  - Buckley
  - Burien
  - Kitsap County
  - Medina
  - Normandy Park
  - Port Orchard
  - Woodway





# Regional MOD Inventory



- The Regional Mobility On Demand (MOD) Inventory will help PSRC **better understand locations and usage of MOD services** in the region and help inform the update to the Regional Transportation Plan.
- MOD includes micromobility (bike share or scooter share), microtransit, ridehailing, and carsharing.
- MOD survey responses were due on March 8<sup>th</sup>.





# ***Ped/Bike Policies and Regulations Inventory***

- In 2019, PSRC collected comprehensive information on state and local **policies and regulations** for building new pedestrian and bicycle infrastructure.
- In 2025, PSRC will update this inventory to help better understand the current status of policies and regulations for **expanding pedestrian and bicycle networks and filling gaps** in the existing network, as well as improving infrastructure to accommodate users of all ages and abilities.





# ***Thank You!***

**Sarah Gutschow**

Senior Planner

[sgutschow@psrc.org](mailto:sgutschow@psrc.org)



Puget Sound Regional Council