


# Regional Safety Action Plan Development

Growth Management Policy Board  
January 4, 2024

  
Puget Sound Regional Council

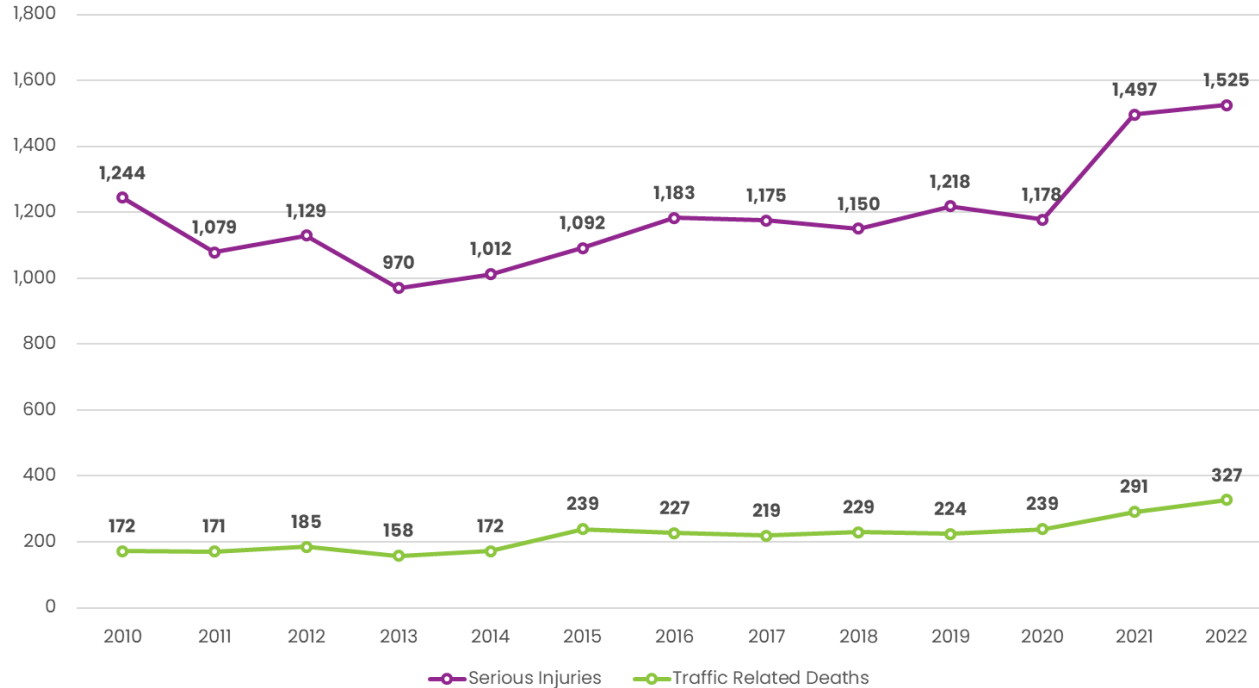


*We are leaders in the region to realize equity for all. Diversity, racial equity and inclusion are integrated into how we carry out all our work.*

[psrc.org/equity](https://psrc.org/equity)

# Safety Trends – Fatalities & Serious Injuries

## Traffic Related Deaths and Serious Injuries in the PSRC Region



➤ Deaths and Serious Injuries have seen a significant increase in recent years

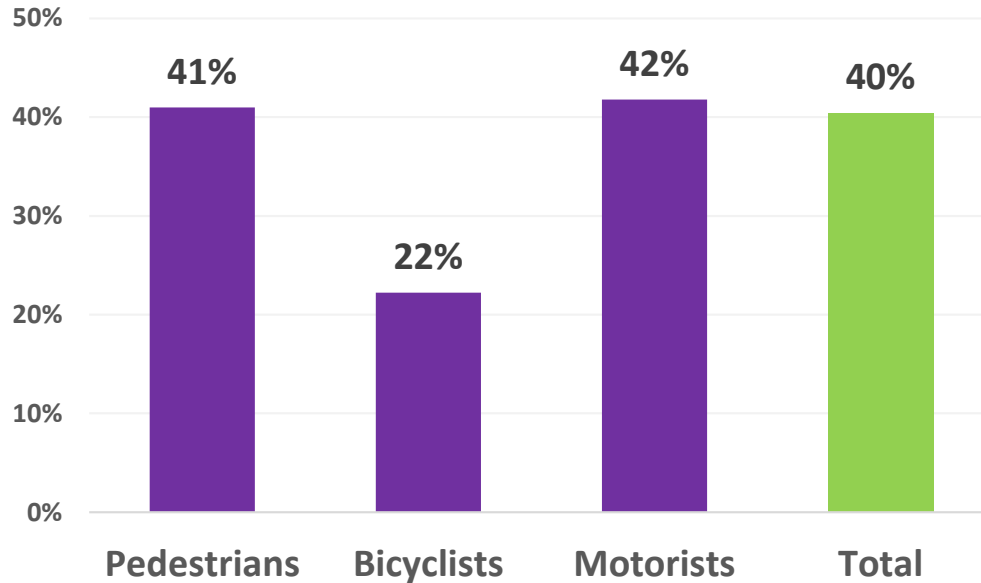
Fatality Source: Washington Traffic Safety Commission Coded Fatality Files (2022 Preliminary)

Serious Injury Source: Washington State Department of Transportation, Crash Data Division, Multi-Row Data Files



# Safety Trends – Fatalities & Serious Injuries

## % Increase in Fatalities and Serious Injuries in the PSRC Region by Mode (2012 – 2022)



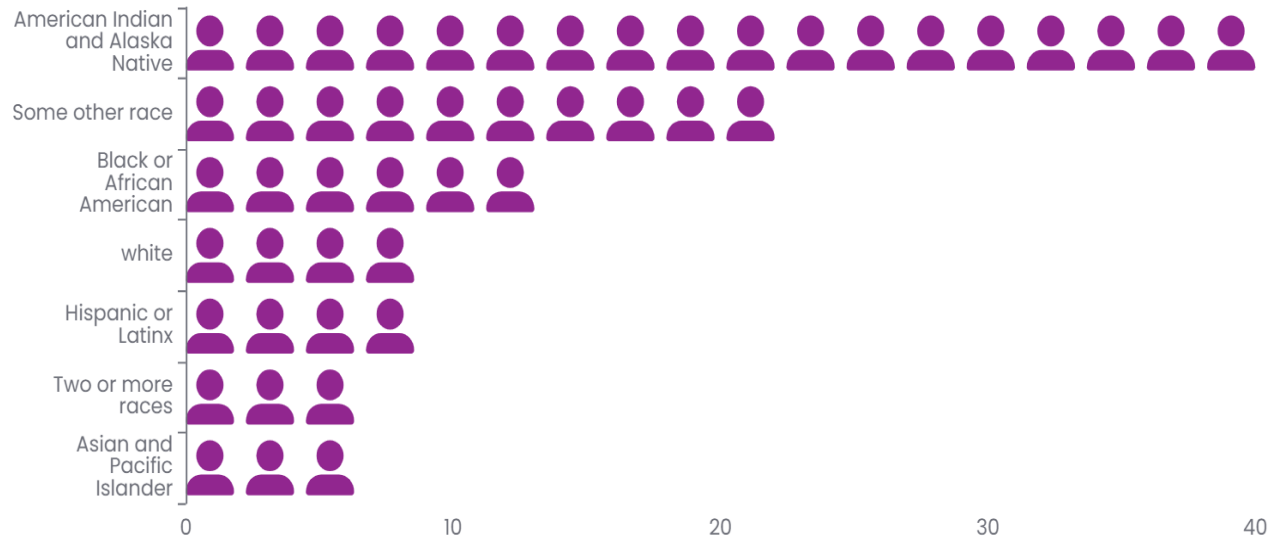
➤ All modes have seen a substantial increase in fatalities and serious injuries over the last 10 years

Source: Washington State Department of Transportation, Crash Data Web Portal (9/12/2023)



# Safety Trends – Fatalities & Serious Injuries

## Traffic Related Fatality Rates in the PSRC Region by Race/Ethnicity, 2021



➤ Traffic deaths disproportionately impact people of color

Fatal Collision Source: Washington Traffic Safety Commission Coded Fatality Files (2022 Preliminary)

Population Data Source: US Census Bureau American Community Survey (ACS) 5-year data Table B03002



# Safety in the Regional Transportation Plan

- Safety is key policy focus area in the 2022 RTP
- The RTP directs PSRC to develop a Regional Safety Action Plan (RSAP)
- RTP directs PSRC to use the Regional Safety Action Plan to inform regional and local planning, including criteria used for project selection



# Guiding Principle – Safe System Approach

- Focus on crash prevention AND minimizing harm when crashes happen
  - Identify and address risks vs. react to crash history
  - Prevent deaths when crashes do occur
  - Design roadways that anticipate human mistakes and reduce crash severity



# Work to Date

- **SS4A Safety Planning Awards (USDOT Safe Streets and Roads For All)**
  - Round 1 – PSRC & 6 local agencies awarded \$4.9 M in Feb. 2023. PSRC using its portion (\$2.7 M) to develop RSAP
  - Round 2 – PSRC consolidated application with 10 additional jurisdictions seeking planning funds (\$2.9 M award announced in December)
- **Technical support consultant has been selected. Engagement consultant to be selected by mid-late January**
- **PSRC held first Regional Safety Summit June 2023 – 140 attendees**



# What is a Regional Safety Action Plan?

- RSAP is complementary to local safety action plans
- Will provide regional scale analysis and tracking
- Will provide context-specific strategies based on typologies
- Local plans have location-specific project and program lists





# Scope of Work Outline – Overview

- What challenges do we face? What problems are we trying to address?
  - Highlight trends, negative impacts and costs
- What is a Regional Safety Action Plan, what does it do, and what goals and policies is it guided by?
  - Provide data and resources to support the development and implementation of local safety plans, projects and programs



# SOW Outline - Safety and Equity Analyses

- What and where are the regional safety issues?
- Examine fatalities, serious injuries, and high injury network, and explore other options for regional scale data analysis
- Focus on typologies for more context and to tease out key differences in terms of incident rates, etc.
  - Types of facilities, user groups, demographics (equity component), community context



# SOW Outline – Engagement and Collaboration

- Build on the Safety Summit – we want to hear from more people
- Use events, workshops, focus groups, online surveys, etc. to make sure we are hearing from everybody
  - Include equity focus groups and other stakeholder groups not usually at the table
- Describe why we are engaging and what we heard
  - Get regional perspectives on issues and priorities, including from the general public



# SOW Outline - Strategies and Actions

- Menu of options including strategies, actions, and proven countermeasures
- Provide toolkits for jurisdictions to choose the most effective approach based on specific context, scale and other typologies
- Will consider coming up with specific examples or case studies to apply what we've learned through our analyses



# SOW Outline - Implementation & Next Steps

- Highlight key roles and responsibilities to implement this plan
- Commit to monitoring and tracking progress
- We want this plan to be a call to action, so we will make sure there are implementation tools and next steps available
  - Provide resources to help agencies develop approaches and implement their projects/programs



# Regional Safety Plan – Next Steps

- Jan. 2024 – Finalize consultant selections and execute contracts
- Spring/Summer 2024 – Complete initial public engagement including survey, focus groups, and other events
- Summer 2024 – Complete data analysis and state of the region report
- Winter 2024/2025 – Draft plan with strategies completed
- Winter/Spring 2025 – Target final plan adoption date
- Engagement opportunities throughout



# Contact Info

**Gary Simonson**

**Senior Planner**

**[gsimonson@psrc.org](mailto:gsimonson@psrc.org)**

**(206) 971-3276**

