

# Recommendations on PSRC's FHWA Equity Pilot

Equity Advisory Committee

December 14, 2023



*We are leaders in the region to realize equity for all. Diversity, racial equity and inclusion are integrated into how we carry out all our work.*

[psrc.org/equity](https://psrc.org/equity)



# Presentation Overview

- Equity Pilot Review
- Schedule
- EAC Recommendations



# Brief Review: Project Selection & Pilot

- 2022 strengthened equity and safety criteria
- GOAL of the Equity Pilot:
  - Develop innovative ways to improve equity in PSRC's project selection process (e.g., questions and evaluation process)
  - PSRC process provides feedback loop into future planning, improving how transportation projects meet the needs of marginalized communities
    - Laying out expectations for future project submittals



# 2023 Equity Pilot Schedule

## Phase 1: Understanding



Jan: Project Selection Introduction

Feb: Learn from other MPOs

March: Project Evaluation Simulation

## Phase 2: Designing



April – May: Pilot Co-Creation

June – Aug: Design Pilot with EAC Subgroup

Sept: Review with Full EAC & Develop Call Materials

## Phase 3: Implementing



Sept: Release Pilot

Sept – Nov: Conduct Pilot

Nov: EAC Pilot Process Recommendations

## Phase 4: Planning Future



Nov – Dec: EAC Process and Project Recommendations

Dec: Board Review of EAC Recommendations

Jan 2024: Policy Framework Adoption

# 2023 Equity Pilot Schedule

## Phase 1: Understanding



Jan: Project selection introduction

Feb: Learn from other MPOs

March: Project evaluation simulation

## Phase 2: Designing



April – May: Pilot Co-Creation

June – Aug: Design Pilot

Sept: Review with EAC and Develop Call Materials

## Phase 3: Implementing



Sept: Release Pilot

Sept – Oct: Conduct Pilot

Nov: EAC Pilot Process Recommendations

## Phase 4: Planning Future



Nov – Dec: EAC Process and Project Recommendations

Dec: Board Review of EAC Recommendations

Jan 2024: Policy Framework Adoption

# 2023 Equity Pilot Schedule

## Phase 1: Understanding



Jan: Project Selection Introduction

Feb: Learn from other MPOs

March: Project Evaluation Simulation

## Phase 2: Designing



April – May: Pilot Co-Creation

July – Aug: Design Pilot with EAC subgroup

Sept: Review with Full EAC & Develop Call Materials

## Phase 3: Implementing



Sept: Release Pilot

Sept – Nov: Conduct Pilot

Nov: EAC Pilot Process Recommendations

## Phase 4: Planning Future

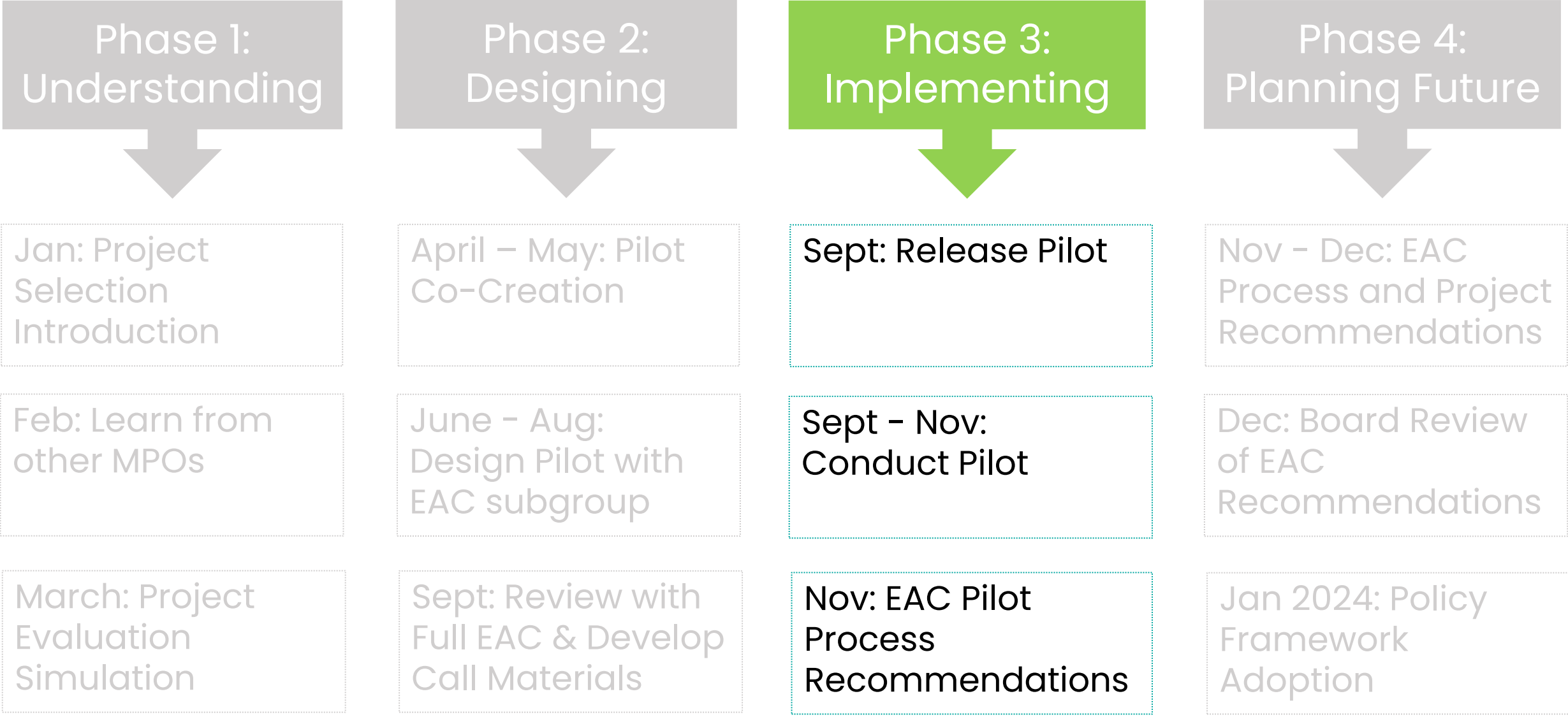


Nov – Dec: EAC Process Recommendations

Dec: Board Review of EAC Recommendations

Jan 2024: Policy Framework Adoption

# 2023 Equity Pilot Schedule



# 2023 Equity Pilot Schedule

## Phase 1: Understanding



Jan: Project Selection Introduction

Feb: Learn from other MPOs

March: Project Evaluation Simulation

## Phase 2: Designing



April – May: Pilot Co-Creation

June – Aug: Design Pilot with EAC subgroup

Sept: Review with Full EAC & Develop Call Materials

## Phase 3: Implementing



Sept: Release Pilot

Sept – Nov: Conduct Pilot

Nov: EAC Pilot Process Recommendations

## Phase 4: Planning Future



Nov – Dec: EAC Process and Project Recommendations

Dec: Board Review of EAC Recommendations

Jan 2024: Policy Framework Adoption



# Equity Pilot Framework

EAC feedback: Test out two approaches for the pilot

## 1. Updating existing structure (Pathway 1)

- Update criteria and guidance
  - EFAs | Outreach | Displacement
- Increase equity criterion point values

## 2. Equity woven throughout all criteria (Pathway 2)

- Same criteria and guidance updates
- Equity incorporated throughout
  - Jobs | Safety

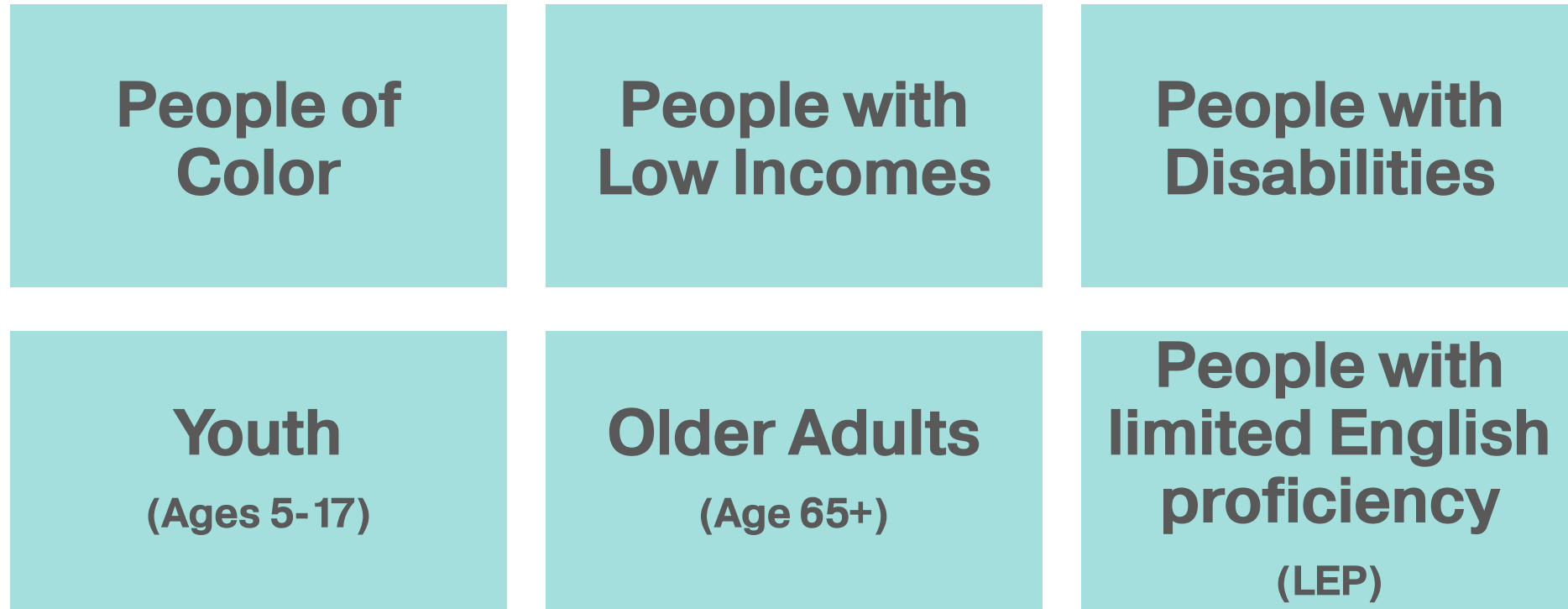


# Equity Focus Areas (EFAs)

*Based on foundational work in*

## VISION 2050 & the Regional Transportation Plan (RTP)

Six demographics used to measure and track disparities



Equity Focus Areas (EFAs)

have higher proportions of members of these groups



# Equity Focus Areas (EFAs)

Figure 1. People of Color, 2019

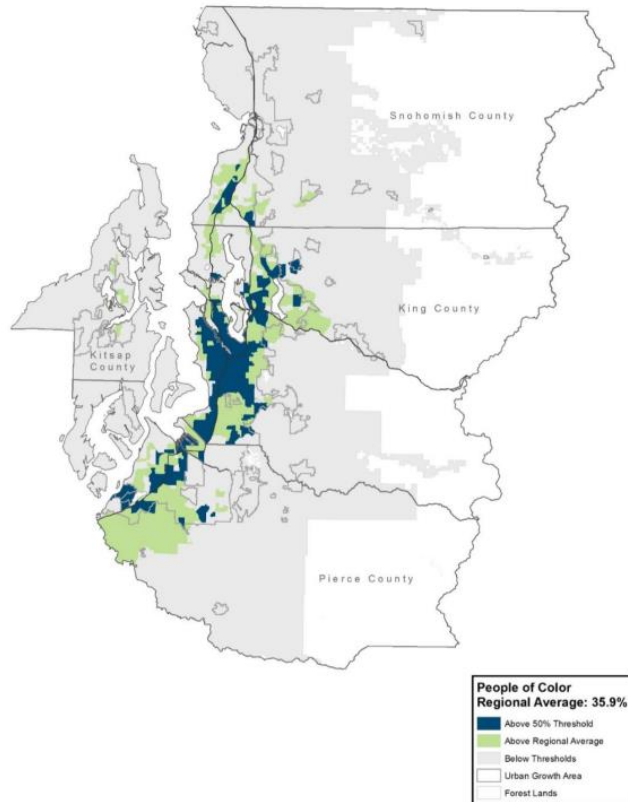


Figure 2. People with Low Incomes, 2019

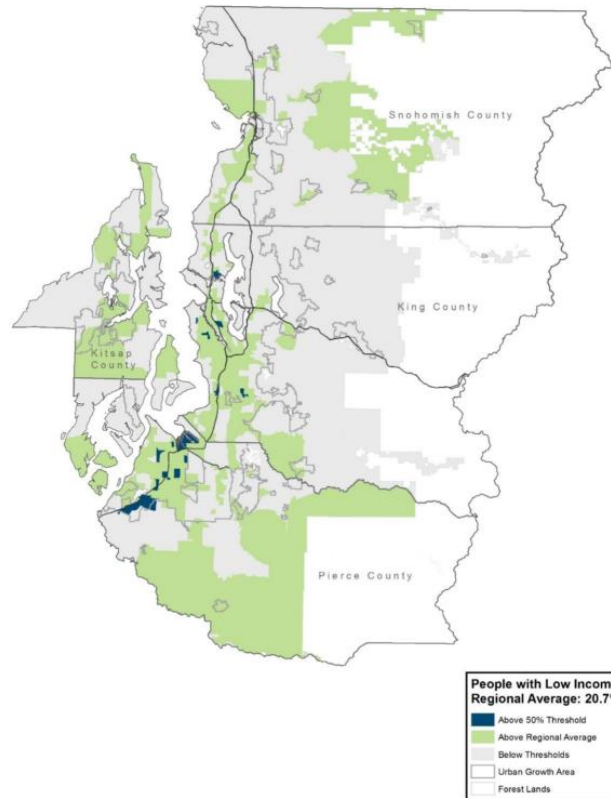
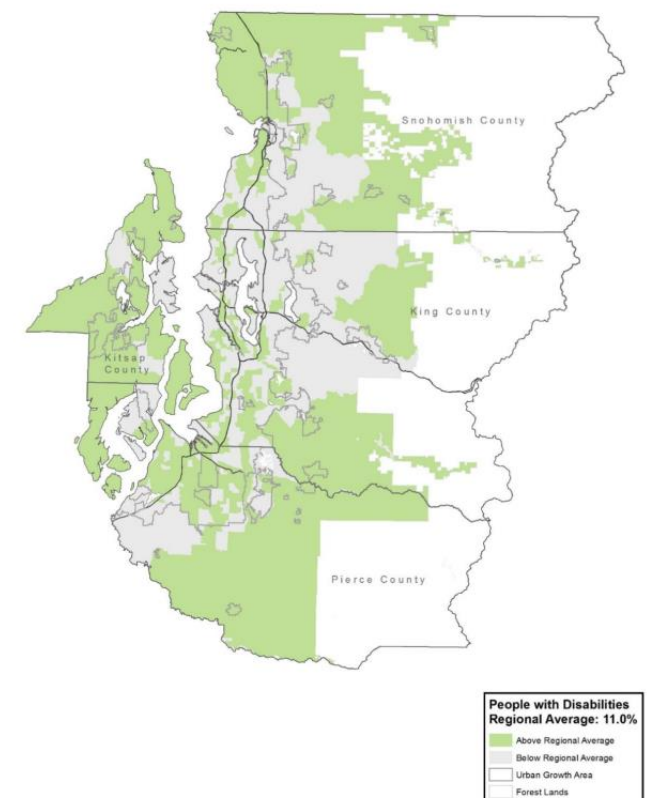


Figure 4. People with Disabilities, 2019



# Equity Focus Areas (EFAs)

Figure 6. Youth, 2019

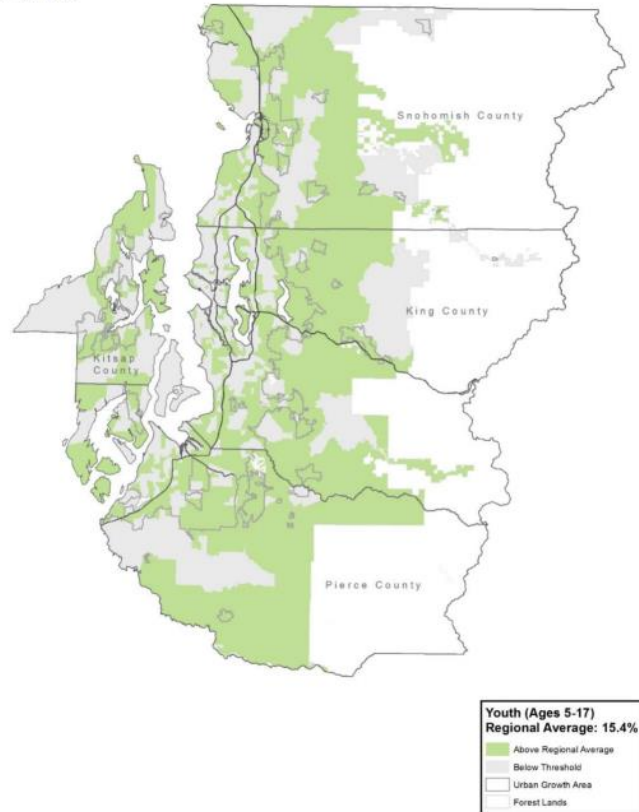


Figure 8. Older Adults, 2019

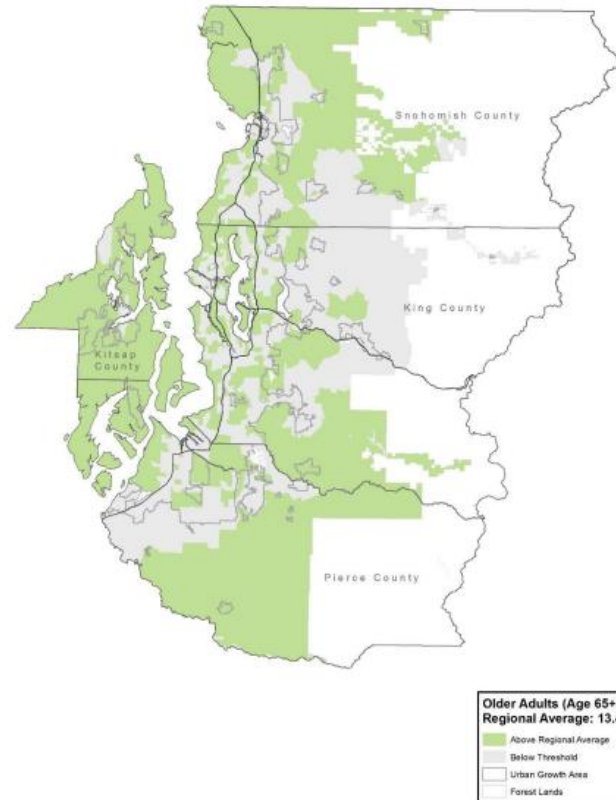
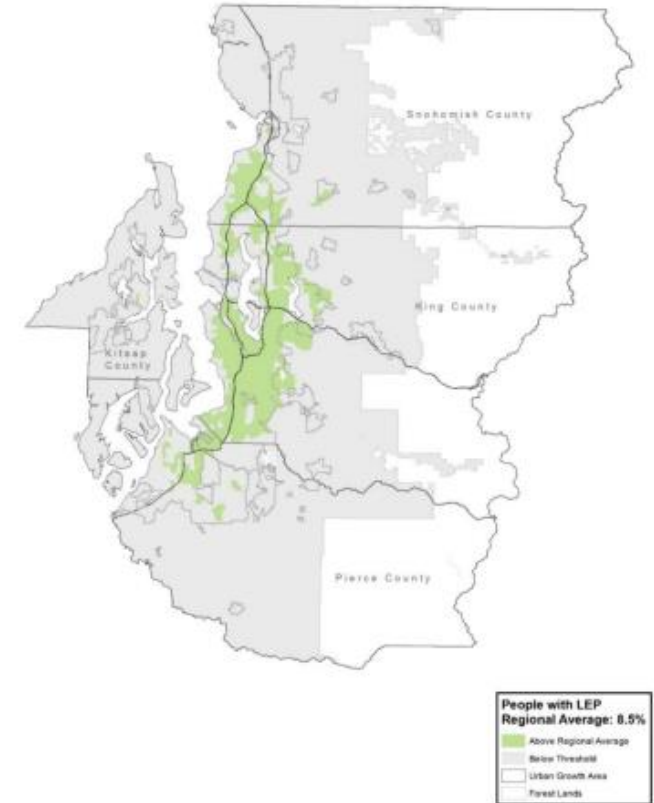


Figure 10. People with LEP, 2019



# Equity Pilot Logistics

- Every project responded to **both pathways**
- **One project per agency** to be submitted
- **\$6.01 million available**
  - **Cap funding** request at **\$1,000,000**
    - Allowed for a diversity of project types and sizes
  - Total of **8 projects** submitted requesting a total of **\$6,354,283**







# Equity Pilot

## EAC Recommendations



# **EAC Recommendations**

## **Criteria Improvements**



# EAC Recommendations

## Pathway 2

- Identification of **equity populations** and **most marginalized** moved to top of document.
- Description of how the project will expand **access to jobs** for the Equity Focus Areas (EFAs)
- Description of how the project addresses **redundancies** and improves **resiliency**
- Identification of the **existing disparities** for the EFAs and most marginalized
- Description of public **outreach** process reflected in PSRC's **Equitable Engagement Guidance**
- Identification of **anti-displacement strategies** reflected in the Housing Opportunities by Place (HOP) tool
- Description of **safety issues** experienced by EFAs addressed by the project
- Identification of **diesel pollution and disproportionate impacts**





# EAC Recommendations

- Description of how the project will expand **access to jobs** for the **Equity Focus Areas (EFAs)**

CRITERIA
<b>Development of Centers</b>
Circulation, Mobility and Accessibility
Outreach and Displacement
Safety
Air Quality / Climate Change
Project Readiness / Financial Plan



# EAC Recommendations

- Description of how the project addresses **redundancies** and **improves resiliency**
- Identification of the **existing disparities** for the EFAs and most marginalized

CRITERIA
Development of Centers
<b>Circulation, Mobility and Accessibility</b>
Outreach and Displacement
Safety
Air Quality / Climate Change
Project Readiness / Financial Plan





# EAC Recommendations

- Description of public outreach process reflected in PSRC's Equitable Engagement Guidance
- Identification of anti-displacement strategies reflected in the Housing Opportunities by Place (HOP) tool

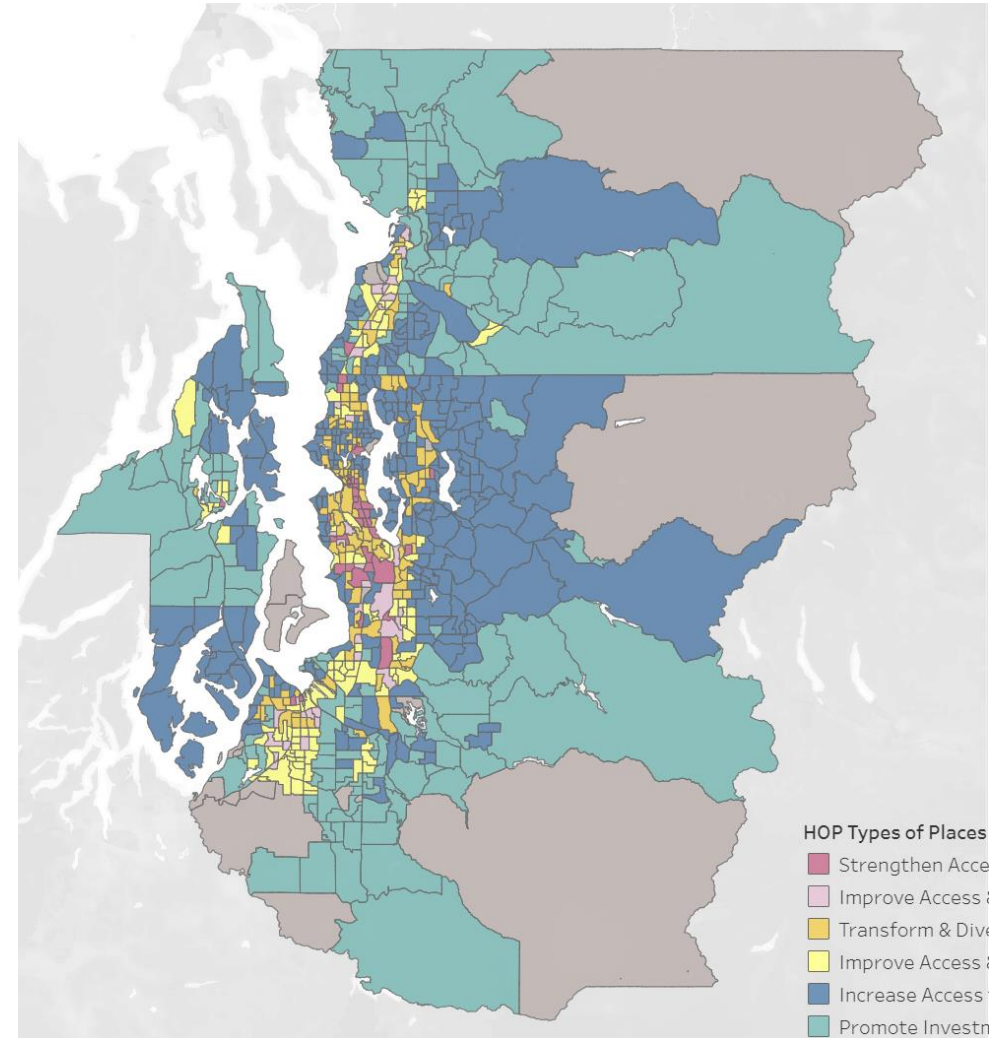
CRITERIA
Development of Centers
Circulation, Mobility and Accessibility
Outreach and Displacement
Safety
Air Quality / Climate Change
Project Readiness / Financial Plan



# EAC Recommendations

## Displacement

- Housing Opportunities by Place (HOP) is a PSRC tool that uses typologies to classify anti-displacement strategies that effectively address housing access and affordability.
- Each Census Tract in the region is categorized into one of six typologies:
  - Promote Investment & Opportunity
  - Improve Access & Housing Choices
  - Improve Access & Affordability
  - Increase Access to Single Family Neighborhoods
  - Transform & Diversify
  - Strengthen Access & Affordability



# EAC Recommendations

- Description of **safety issues** experienced by EFAs addressed by the project
- Increase Points

CRITERIA
Development of Centers
Circulation, Mobility and Accessibility
Outreach and Displacement
<b>Safety</b>
Air Quality / Climate Change
Project Readiness / Financial Plan



# EAC Recommendations

- Identification of **diesel pollution and disproportionate impacts**
- Tiered scoring for areas most impacted under the **WA Environmental Health Disparities map**

CRITERIA
Development of Centers
Circulation, Mobility and Accessibility
Outreach and Displacement
Safety
<b>Air Quality / Climate Change</b>
Project Readiness / Financial Plan





# **EAC Recommendation Funding Process**





# EAC Recommendations

## Equity Pilot Funding Process

**2023 Equity Pilot Program Project Ranking & Funding Request**

Sponsor	Project Title	Pathway 2		Request
		Rank	Score	
Tacoma	South 38th St. & South Cedar St. Pedestrian Safety Improvements	1	76	\$ 1,000,000
Seattle	Beacon Avenue South Safety Project	2	69	\$ 865,000
Federal Way	BPA Trail - City Center Extension	3	68	\$ 600,000
Snohomish County	Center Road Pedestrian Improvements	4 (tied)	49	\$ 485,000
WSDOT	SR 99 Preliminary Design Study	4 (tied)	49	\$ 1,000,000
Kent	Benson Corridor 20-minute Neighborhood Plan	6	43	\$ 750,000
Pierce Transit	Equitable Bus Shelter Program	7	42	\$ 1,000,000
Tulalip Tribes	Marine Drive / Hermosa Heights Safety Improvements	8	41	\$ 654,000
Total				\$ 6,354,000



# EAC Recommendations

## Equity Pilot Funding Process

- 8 projects: helped us learn and refine recommendations
- EAC had conversations around funding low scoring projects
  - Moving forward, expect sponsors address the criteria in full and submit projects that meet regional policies
- Recognize larger, more well-resourced agencies may have more resources for grant writing and participation, than tribes and small agencies
- Recommend funding all projects
- PSRC encouraged to continue to work to provide assistance and guidance to small agencies





# Thank You

Charles Patton  
Program Manager, Equity Policy & Initiatives  
[cpatton@psrc.org](mailto:cpatton@psrc.org)

