

# Regional Safety Action Plan Draft Scope of Work

Executive Board  
September 28, 2023

 Puget Sound Regional Council

*We are leaders in the region to realize equity for all. Diversity, racial equity and inclusion are integrated into how we carry out all our work.*

[psrc.org/equity](https://psrc.org/equity)



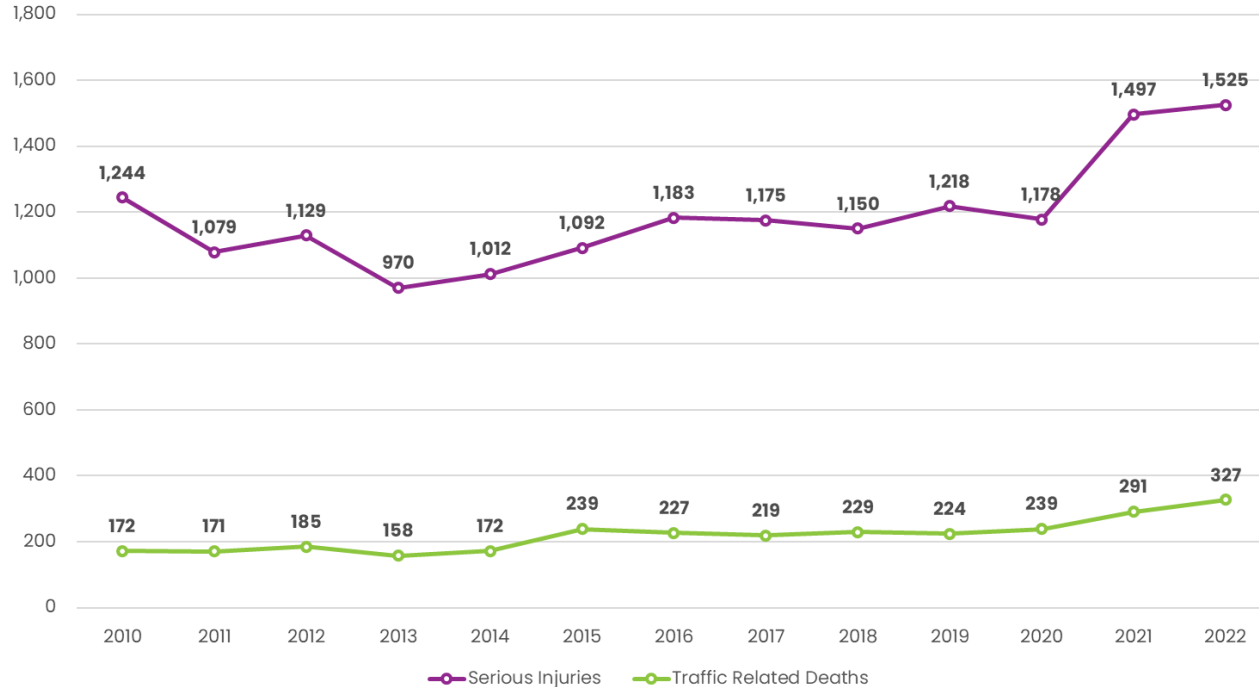
# Today's Presentation

- ❑ What is the Challenge we Face?
- ❑ Recap Safety Focus in the Regional Transportation Plan
- ❑ Discuss Guiding Principle – Safe System Approach
- ❑ Review Work To Date
- ❑ Discuss Scope of Work Outline
- ❑ Review Next Steps



# Safety Trends – Fatalities & Serious Injuries

## Traffic Related Deaths and Serious Injuries in the PSRC Region



➤ Deaths and Serious Injuries have seen a significant increase in recent years

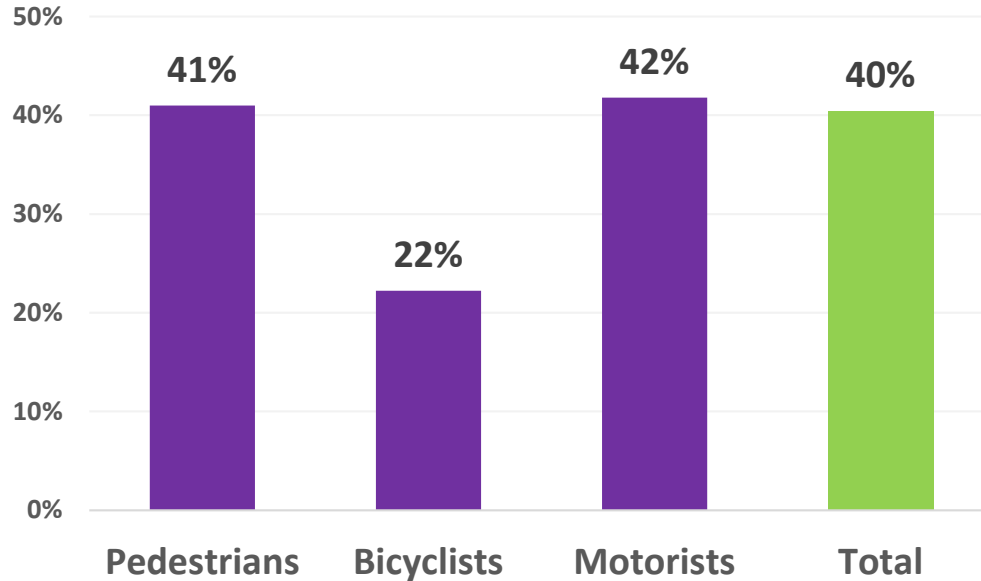
Fatality Source: Washington Traffic Safety Commission Coded Fatality Files (2022 Preliminary)

Serious Injury Source: Washington State Department of Transportation, Crash Data Division, Multi-Row Data Files



# Safety Trends – Fatalities & Serious Injuries

## % Increase in Fatalities and Serious Injuries in the PSRC Region by Mode (2012 – 2022)



➤ All modes have seen a substantial increase in fatalities and serious injuries over the last 10 years

Source: Washington State Department of Transportation, Crash Data Web Portal (9/12/2023)



# Safety in the Regional Transportation Plan

- Safety is a key policy focus area in the 2022 Regional Transportation Plan (RTP) and is a cross-cutting issue throughout the plan
- The RTP directs PSRC to develop a Regional Safety Action Plan (RSAP), including strategies, actions and performance indicators
- RTP also directs PSRC to use RSAP to inform regional and local planning, including criteria used for the project selection process and the Regional Capacity Project List



# Guiding Principle – Safe System Approach

- Focus is on investing in crash prevention AND minimizing harm when crashes do happen
  - Identify and address risks vs. react solely based on crash history
  - Focus on preventing deaths and serious injuries over simply preventing crashes
  - Design roadways that anticipate human mistakes and reduce crash severity in addition to educating system users



# Work to Date

- PSRC and 6 local agencies jointly applied and were awarded \$4.9 M for safety planning via USDOT Safe Streets and Roads For All Grant Program (SS4A)
  - PSRC is using its portion of grant funding (\$2.7 M) to develop a Regional Safety Action Plan, with consultant support
- PSRC held first Regional Safety Summit June 2023 – 140 attendees
  - Purpose was to convene stakeholders to advance the conversation on how to achieve zero roadway fatalities and serious injuries
  - Feedback from Summit will inform development of the RSAP



# SS4A Action Plan Requirements

- Regional Safety Action Plan will include all of these required elements:
  - ✓ Commitment and goal setting
  - ✓ Safety analysis
  - ✓ Engagement and collaboration
  - ✓ Equity considerations
  - ✓ Policy assessment
  - ✓ Development of strategies and actions
  - ✓ Monitoring and tracking





# What is a Regional Safety Action Plan?

- Regional safety action plans are complementary to local safety action plans
- Will provide regional scale analysis and tracking
- Will provide context-specific options for strategies and actions based on different typologies
- Local plans have location-specific project and program lists
  - Six jurisdictions in the region were awarded Action Plan funds in the 1<sup>st</sup> year of SS4A, while ten more have applied in the 2<sup>nd</sup> year



# Scope of Work Outline – Overview

- What challenges do we face? What problems are we trying to address?
  - Highlight trends, negative impacts and costs
- What is a Regional Safety Action Plan, what does it do, and what goals and policies is it guided by?
  - Develop a regional culture of transportation safety
  - Provide data and resources to support the development and implementation of local safety plans, projects and programs



# SOW Outline - Safety and Equity Analyses

- What and where are the regional safety issues?
- Highlight what data we are looking at and what methods we are using
  - Will examine fatalities, serious injuries, and high injury network, and explore other options for data that make sense to analyze at regional scale
- Focus on typologies for more context and to tease out key differences in terms of incident rates, etc.
  - Types of facilities, user groups, demographics (equity component), community context



# SOW Outline – Engagement and Collaboration

- Build on the Safety Summit – we want to hear from more people
- Use an array of outreach efforts (events, workshops, focus groups, online surveys, etc.) to make sure we are hearing from everybody
  - Include equity focus groups and other stakeholder groups not usually at the table
- Describe why we are engaging and what we heard
  - Get regional perspectives, identify general public's thoughts on safety issues, priorities, and what we should be doing



# SOW Outline - Strategies and Actions

- Menu of options including strategies, actions, and proven countermeasures
- Provide toolkits that jurisdictions can use to choose the most effective approach depending on specific context, scale and other key typologies
- Will consider coming up with specific examples or case studies to apply what we've learned through our analyses



# SOW Outline - Implementation & Next Steps

- Highlight key roles and responsibilities to implement this plan
- Commit to monitoring and tracking progress
- We want this plan to be a call to action, so we will make sure there are implementation tools and next steps available
  - Provide resources to help agencies develop approaches and implement their projects/programs



# Regional Safety Plan – Next Steps

- Put out Request for Proposals (RFP) and select consultant(s) by the end of 2023
- Engage in substantive work including research, analysis and other plan content development
- Will check in regularly with TPB on plan progress
- Target Plan Adoption Date: First quarter of 2025



# Questions?

**Gary Simonson**  
**Senior Planner**  
**(206)-971-3276**  
**[gsimonson@psrc.org](mailto:gsimonson@psrc.org)**

