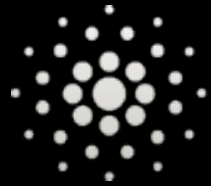




**race
forward**



LOCAL AND REGIONAL
GOVERNMENT ALLIANCE ON
RACE & EQUITY

Racial Equity Toolkit

Seattle's 2035 Comprehensive Plan

Seattle 2035

Growth and Equity

Analyzing Impacts on Displacement and Opportunity
Related to Seattle's Growth Strategy



May 2016



Seattle
Office of Planning &
Community Development

Equitable Development Implementation Plan

April 2016



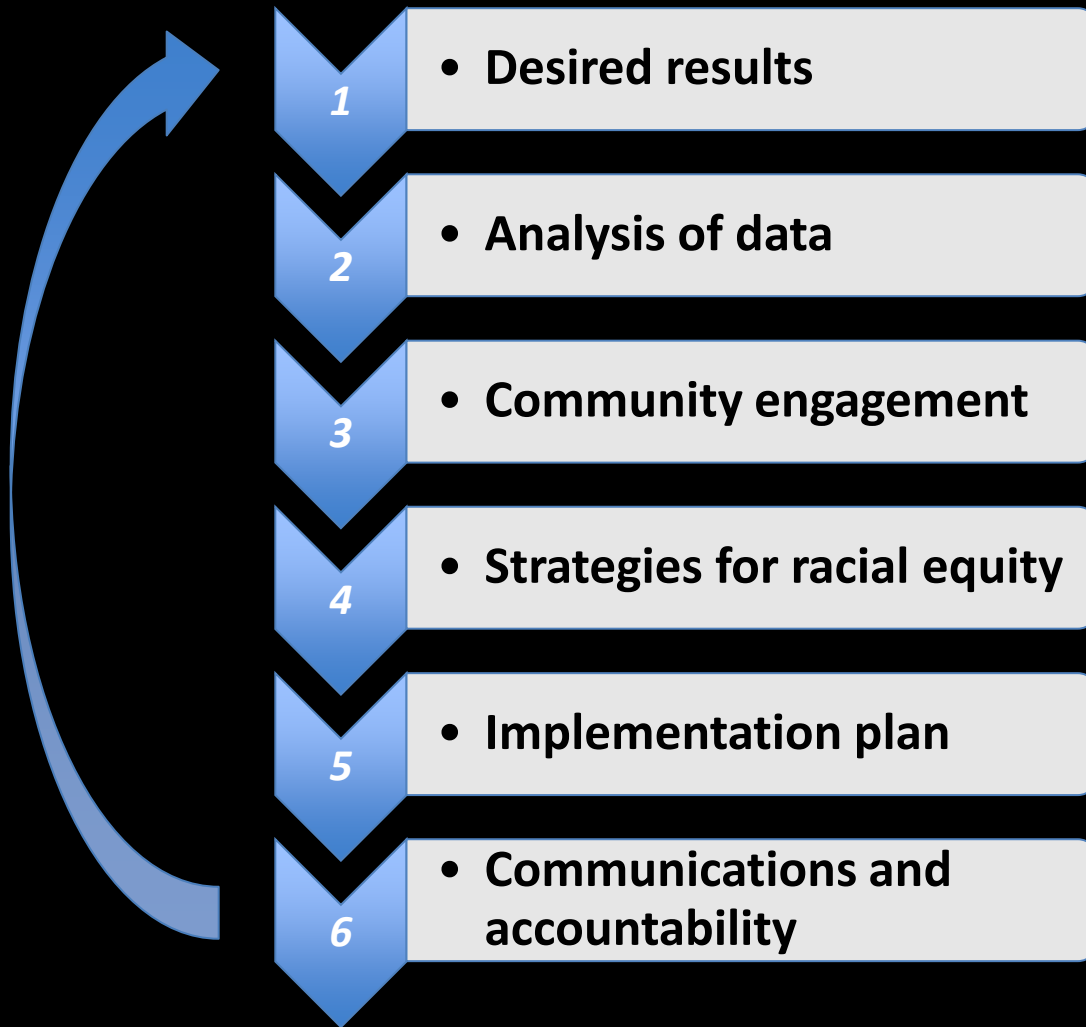
Seattle
Office of Planning &
Community Development



LOCAL AND REGIONAL
GOVERNMENT ALLIANCE ON
RACE & EQUITY

race
forward

Seattle Comprehensive Plan RET



Strong people (Prevent displacement) &
Strong communities (Access to opportunity)

Historical exclusion/disinvestment and risk of displacement

RSET resourced and existing community plans used

Neighborhood typologies, equitable growth scenario, new
policies, EDI program

Capital cabinet formed, EDI funding for projects

Monitoring program, EDI elevated to a division of Planning



LOCAL AND REGIONAL
GOVERNMENT ALLIANCE ON
RACE & EQUITY



RETs impact on Seattle's Comprehensive Plan

1. Urban village typology directs comparatively less growth to high displacement risk areas and more to high opportunity areas.
2. Equity policies included throughout all chapters
3. Implementation plan with Equitable Development Initiative funding for community-led projects

#1

What are your
desired results and
outcomes?



LOCAL AND REGIONAL
GOVERNMENT ALLIANCE ON
RACE & EQUITY



Vision for strong communities and strong people

Vision: Seattle is diverse and all people thrive regardless of race or means. Seattle's neighborhoods will be diverse and will include the community anchors, supports, goods, services, and amenities people need to lead healthy lives and flourish.



LOCAL AND REGIONAL
GOVERNMENT ALLIANCE ON
RACE & EQUITY



#2

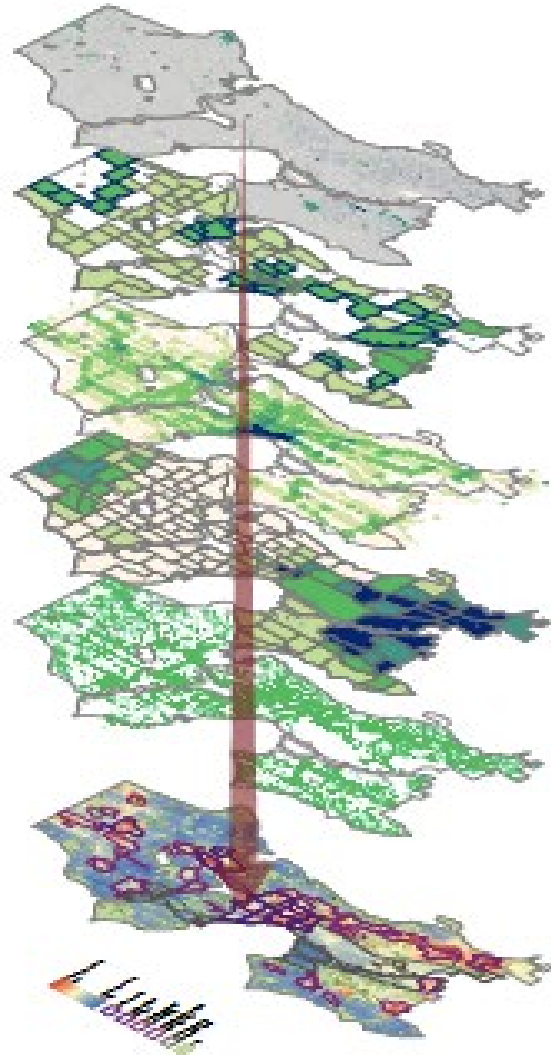
What's the data?
What does the
data say?



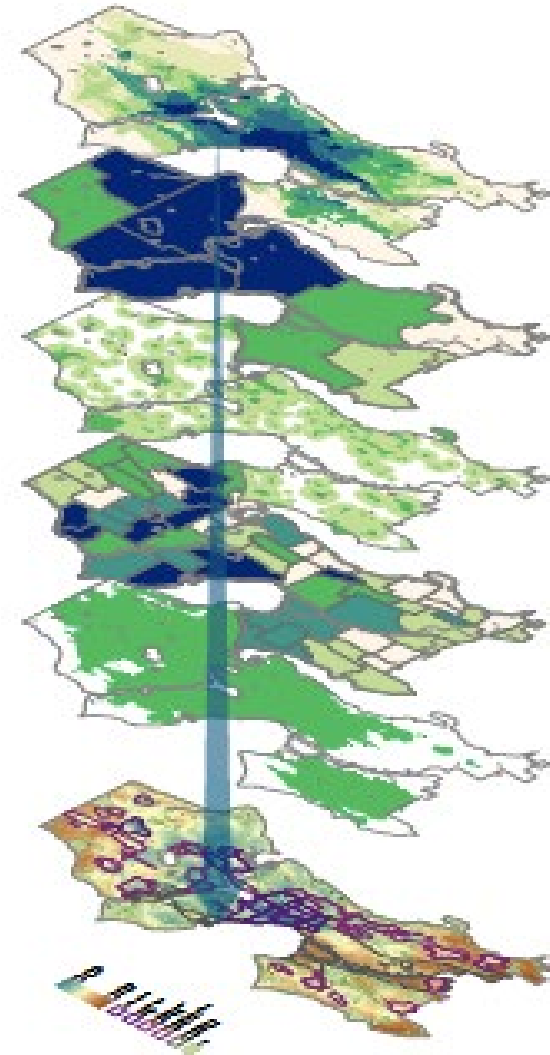
LOCAL AND REGIONAL
GOVERNMENT ALLIANCE ON
RACE & EQUITY



Displacement and Opportunity Indices



1
Overlay indicators of vulnerability, amenities, development potential, and median rent to create the Displacement Risk Index.



2
Overlay education, economic, transit, civic infrastructure, and health data to create the Access to Opportunity Index.

Displacement Risk Index

Vulnerability

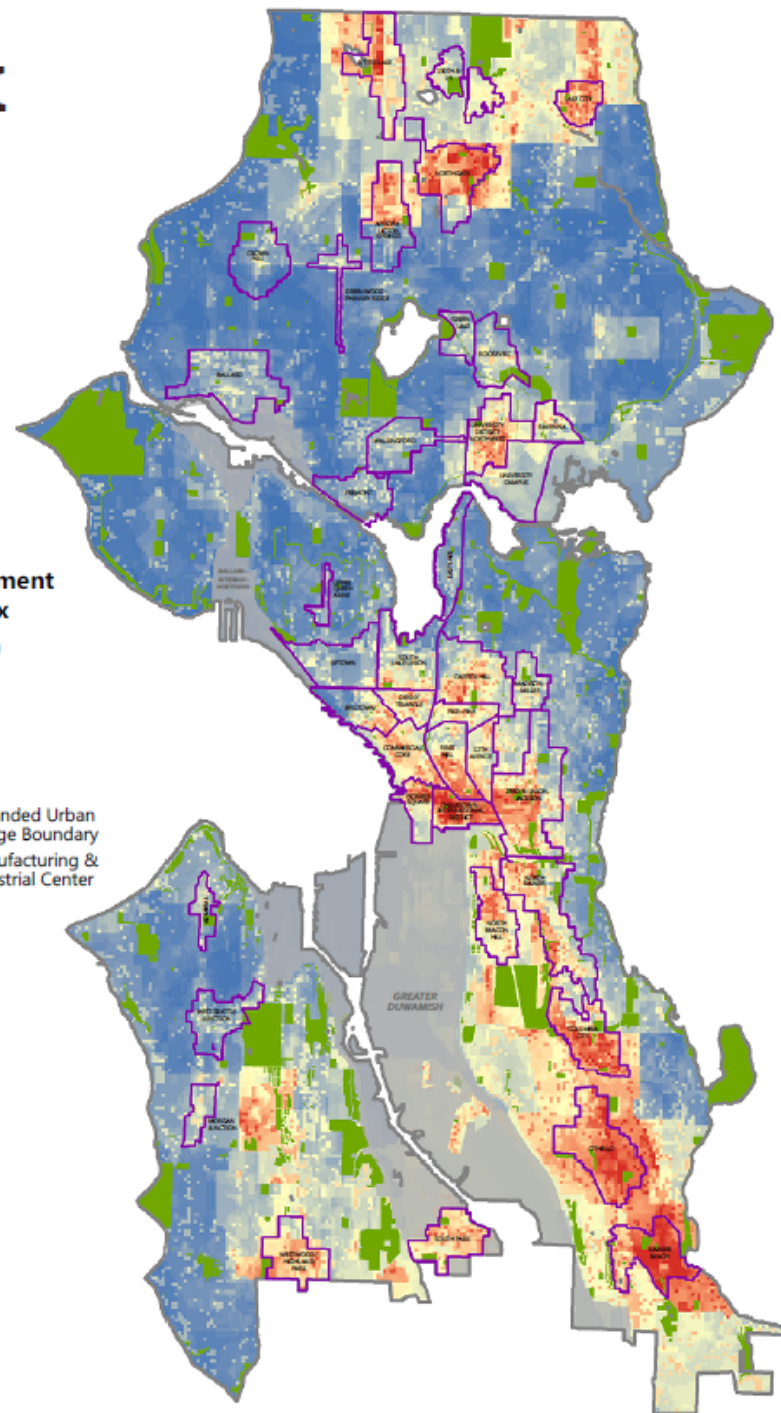
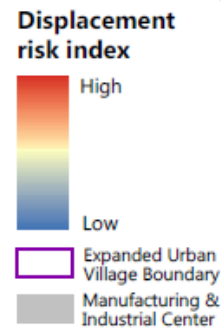
- Nonwhite population
- Low English-speaking ability
- Low educational attainment
- Rental tenancy
- Housing cost burden
- Income below 200% of poverty

Amenities

- Proximity to frequent bus service
- Proximity to current or future Link light rail and streetcar
- Proximity to regional job center
- Proximity to already-gentrified or affluent neighborhood
- Proximity to core businesses (grocery, pharmacy, restaurant/cafe)
- Proximity to civic infrastructure (school, community center, park, library)

Development capacity and rent

- Residential parcels with high development potential
- Below-average median rent



Access to Opportunity Index

Education

High-performing elementary / middle school
(reading and math)

Above-average high school graduation rate

Transit time to university / college

Proximity to library

Economic opportunity

Number of jobs within two-mile radius

Change in median home value 2000-2013

Transit access

Proximity to frequent bus service

Proximity to current/future light rail/streetcar

Civic infrastructure

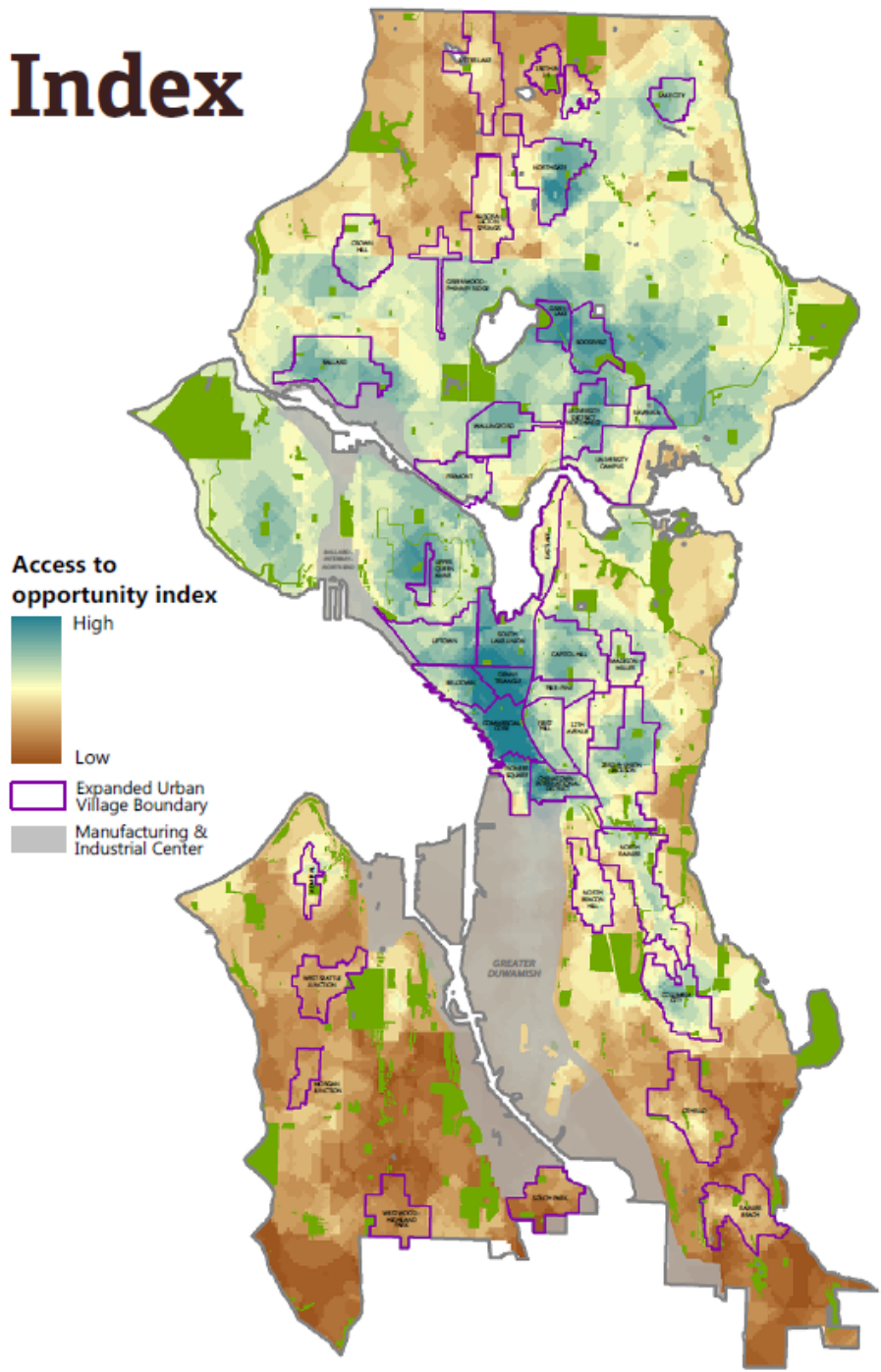
Proximity to community center

Proximity to park

Health

Proximity to public health facility

Proximity to store with fresh produce



#3

How are communities of color engaged? Are there opportunities to expand?

How do we achieve stability as we grow and prosper?



#4

What are your strategies to advance racial equity? Who benefits and who is burdened?
How are you mitigating unintended consequences?



LOCAL AND REGIONAL
GOVERNMENT ALLIANCE ON
RACE & EQUITY



New Equitable Development Policy Framework: Strong People, Strong Communities



**Prevent residential, commercial
and cultural displacement**



**Promote transportation
and connectivity**



**Advance economic
mobility and opportunity**



**Develop healthy and safe
neighborhoods**



**Build on local
cultural assets**



**Equitable access to all
neighborhoods**

#5

What is the plan for implementation? How are impacted people of color leading the change and implementing the decision?



LOCAL AND REGIONAL
GOVERNMENT ALLIANCE ON
RACE & EQUITY



Equitable Development Implementation Plan

April 2016



Equitable Development: Financial Investment Strategy

June 2016





WILLIAM GROSE CENTER
FOR CULTURAL INNOVATION



Othello
S Q U A R E

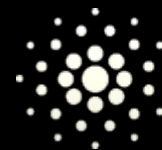


LOCAL AND REGIONAL
GOVERNMENT ALLIANCE ON
RACE & EQUITY



#6

How will you ensure
accountability, communicate,
and evaluate results?



LOCAL AND REGIONAL
GOVERNMENT ALLIANCE ON
RACE & EQUITY



Equitable Development Initiative



Supporting projects that promote strong communities and places with equitable access. Photo by Sharon Chang.

Community holds the vision, strategies, priorities

City holds a fund

Community on the Advisory Board and informs funding decisions for:

- CBO capacity building
- Building cultural space, jobs centers, affordable housing

Together we can leverage our collective resources to create communities of opportunity for everyone, regardless of race or means



LOCAL AND REGIONAL
GOVERNMENT ALLIANCE ON
RACE & EQUITY



THANK YOU FOR ADVANCING THE PRACTICE OF PLANNING FOR RACIAL EQUITY!

Please direct questions to rcurren@raceforward.org

Learn more about [GARE's Housing, Land, and Development Network here](#)



LOCAL AND REGIONAL
GOVERNMENT ALLIANCE ON
RACE & EQUITY

