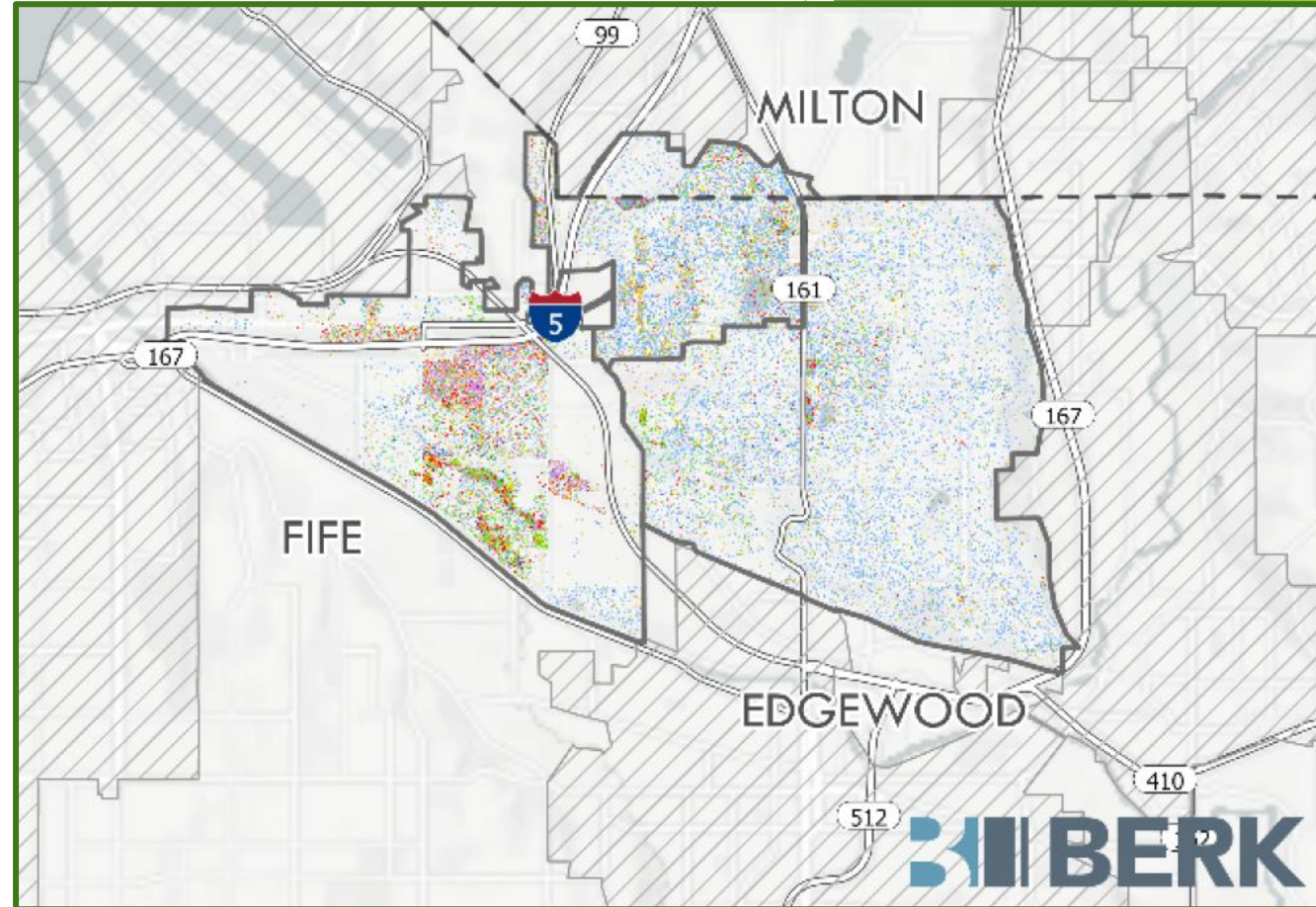




How did taking a collaborative approach benefit Fife?

- Subregional coordination is a benefit for small cities with limited staff capacity
- Consistent approach to analysis and map/graphics production provides a value-add of...
 - Additional local context
 - Ability to compare and reference existing conditions of other jurisdictions
 - Opens the door for future local collaboration and lessons learned from different approaches to policy and development regulations
- Great example of the benefits of SSHAP membership
- Illustrates potential for similar future collaborative efforts at a staff level

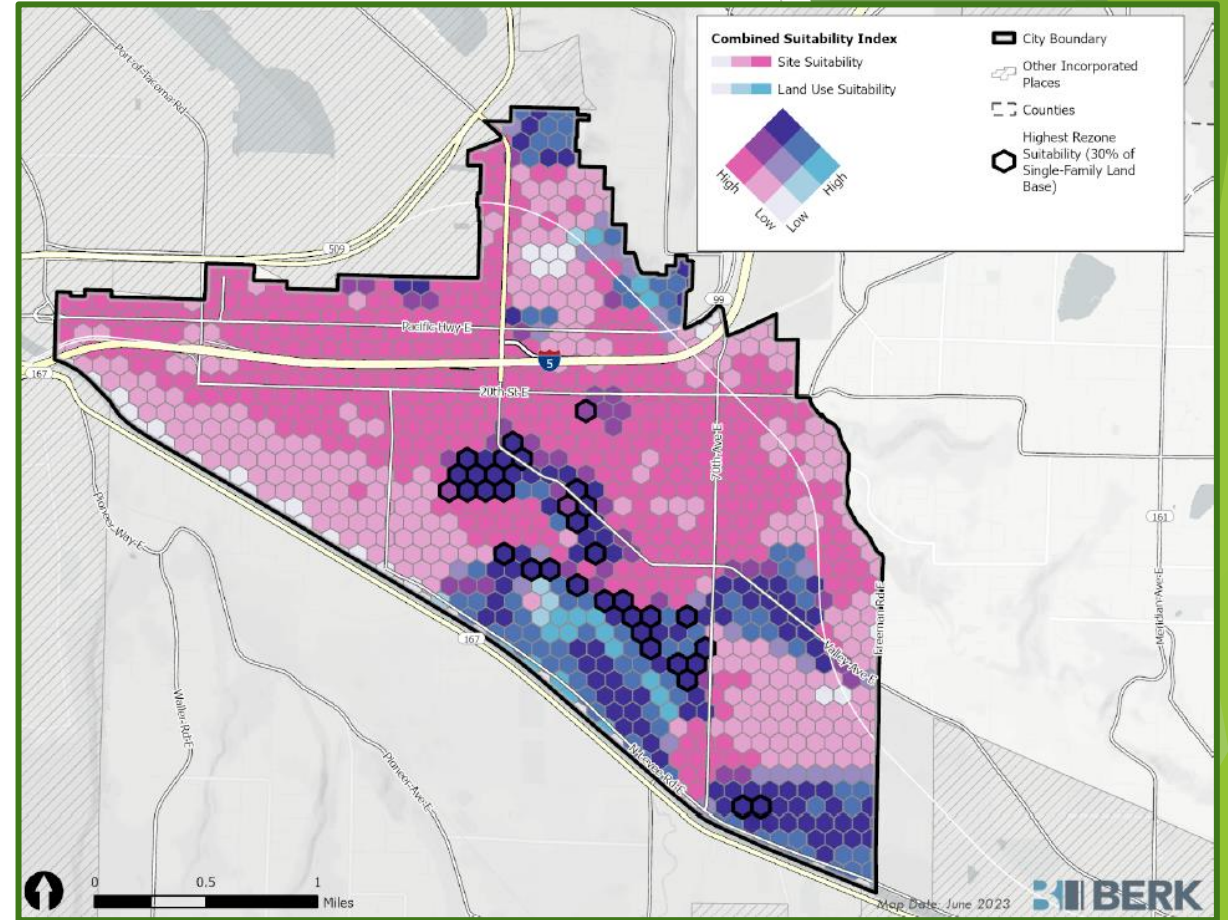


*Exhibit 3 of SSHAP Racial Equity Analysis:
Race and Ethnicity Dot Density Map, 2020
(zoomed in)*



How will the grant products support future housing work in Fife?

- Confirmed some of staff’s assumptions; now with data and visuals to support
- Will support comprehensive plan update process
 - Policy Recommendations report will be wrapped into this process
 - Now have clear and objective policy language recommendations for consideration
 - Racial Equity Analysis report is a requirement for the comp plan update; having it completed early in the process gives us a strong foundation to keep building on as we move forward
- Frontloads HB 1110 work that will be required in mid-2025
- Stakeholders that have been identified are a valuable resource for future engagement



*Exhibit 16 of SSHAP Middle Housing Project
Policy Recommendations:
Fife Combined Suitability Assessment*