



HB 1181 – Climate Change & the Growth Management Act

June 28, 2023



Puget Sound Regional Council



Washington State
Department of
Commerce

HB 1181 – Climate & GMA



- Adds required Climate Change and Resiliency element
- Updates GMA goals, incorporates climate concepts in multiple elements
- Commerce to develop guidance and model element (previously funded)



HB 1181 – Climate & GMA

Central Puget Sound: Bill requires climate element & updates to transportation element by 2029 for jurisdictions with more than 6,000 residents

- Emissions reduction subelement required for 65 cities/counties, encouraged for 21
- Resilience subelement required for all jurisdictions

VISION 2050: Existing regional and countywide policies to address climate policies in comprehensive plan

HB 1181 adds specificity, requires stand-alone element



Climate & VISION 2050

PSRC's 2024 Comprehensive Plan Consistency Tool:

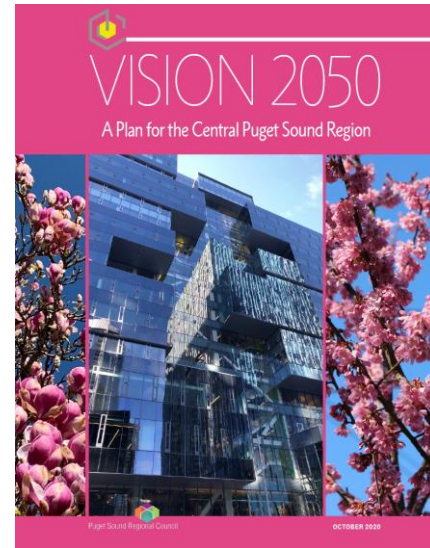
Support achieving regional emission reduction goals by:

- Electrify the transportation system
- Reduce vehicle miles traveled through land use & transportation strategies
- Expand the use of conservation and alternative energy sources
- Reduce building energy use

Address resilience by:

- Protect and restore natural resources that sequester carbon
- Address impacts to vulnerable populations
- Address the impacts of climate change and natural hazards
- Plan for sea level rise

Transportation: Plan for multimodal transportation options



HB 1181 – Climate & GMA

Climate Change & Resiliency Element

Greenhouse gas emissions subelement

- Actions to reduce emissions and vehicle miles traveled
- Prioritize reductions that benefit overburdened communities

Resiliency subelement

- Policies and programs to identify and enhance natural areas, community resiliency, and address natural hazards associated with climate change

Guidance and model element from Commerce

Optional approval from Commerce



HB 1181 – Updated GMA Goals



Updates to GMA goals:

Transportation. Encourage efficient multimodal transportation systems that will reduce greenhouse gas emissions and per capita vehicle miles traveled, and are based on regional priorities and coordinated with county and city comprehensive plans.

Climate change and resiliency. Ensure that comprehensive plans, development regulations, and regional policies [...] adapt to and mitigate the effects of a changing climate; support reductions in greenhouse gas emissions and per capita vehicle miles traveled; prepare for climate impact scenarios; foster resiliency to climate impacts and natural hazards; protect and enhance environmental, economic, and human health and safety; and advance environmental justice.

Updates to Citizen Participation, Open Space, and Environment goals

Changes to element requirements due for central Puget Sound jurisdictions by 2029 but jurisdictions should consult the updated goals in meantime



HB 1181 – Climate & GMA

Central Puget Sound – New Transportation Element Requirements due by 2029

- Incorporate Americans with Disabilities Act transition plans
- Complete active transportation inventory
- New definition of active transportation includes: Planning for active transportation must consider and address accommodation pursuant to the Americans with Disabilities Act and the distinct needs of each form of active transportation.
- Multimodal level of service standards
- Reassessment strategy including state facilities
- Multimodal or demand management options in concurrency

Additional updates to Land Use, Capital Facilities, Utilities, and Parks and Recreation elements

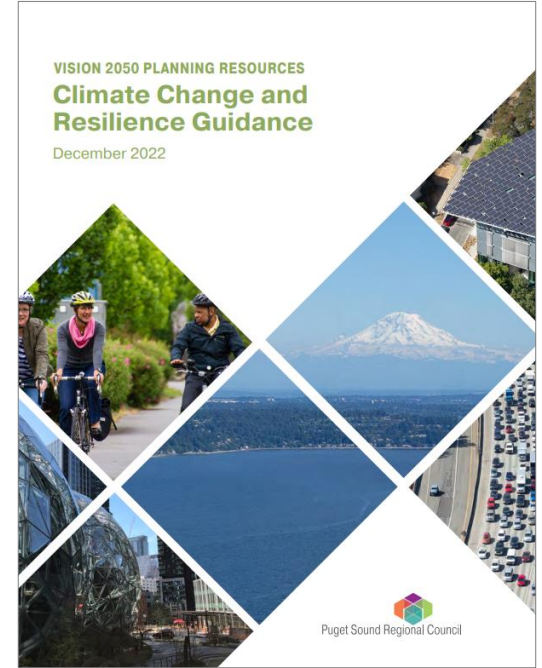
PSRC certification after 2029 Update (Implementation Progress Report)



Resources on Climate & Transportation



[Commerce: Climate Program](#)



[PSRC Planning Resources](#)



GMA & VISION 2050 Bills of Interest

[HB 1425](#): Restores sales and use tax incentives to encourage annexation

[SB 5452](#): Clarifies use of impact fees for bike and ped facilities



Thank You

Liz Underwood-Bultmann, AICP
Principal Planner
LUnderwood-Bultmann@psrc.org

