

# **WSDOT Move Ahead Washington Funding & Prioritization Opportunities for Stormwater Retrofit**

## **Growth Management Policy Board Meeting**

Tony Bush, Stormwater Branch Manager

Tatiana Dreisbach, Stormwater Retrofit Outreach & Innovation Lead

May 4, 2023

Roger Millar, Secretary of Transportation  
Amy Scarton, Deputy Secretary of Transportation

# What is stormwater?

- Precipitation/snowmelt runoff from the built environment (roads/paved and compacted surfaces/buildings)
- Often carries a complex mixture of pollutants
- Source of pollutants comes from vehicles and particles carried though the atmosphere, agriculture, industrial, residential
- Can cause flooding, erosion, scour, sedimentation
- Flows into streams, rivers, estuaries, Puget Sound, and ocean



# 6PPD and 6PPD-quinone

## Science

### A ubiquitous tire rubber-derived chemical induces acute mortality in coho salmon

Zhenyu Tian, Haoqi Zhao, Katherine T. Peter, Melissa Gonzalez, Jill Wetzel, Christopher Wu, Ximin Hu, Jasmine Prat, Emma Mudrock, Rachel Hettinger, Allan E. Cortina, Rajshree Ghosh Biswas, Flávio Vinicius Crizóstomo Kock, Ronald Soong, Amy Jenne, Bowen Du, Fan Hou, Huan He, Rachel Lundeen, Alicia Gilbreath, Rebecca Sutton, Nathaniel L. Scholz, Jay W. Davis, Michael C. Dodd, Andre Simpson, Jenifer K. McIntyre and Edward P. Kolodziej

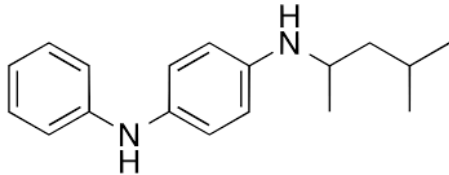
*Science* **371** (6525), 185-189.

DOI: 10.1126/science.abd6951 originally published online December 3, 2020

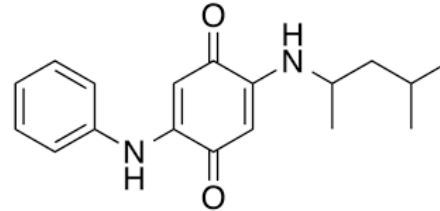


Credit: [US Tire Manufacturers Association](https://www.us-tire.org/)

### 6PPD



### 6PPD-quinone



# How is stormwater managed

## Source control

Create specialized treatment areas to:

- capture and remove pollutants
- slow erosive flows
- or do both



# WSDOT's Ongoing Programs

- Mapping and inventory
- Monitoring and research
- Stormwater retrofits
  - Project-triggered
  - Opportunistic
  - Stand-alone
  - Stormwater Retrofit Assessment Conducted on Every Fish Passage Project
- Maintenance



## Legislative action

# Move Ahead Washington Funding & HEAL Act

The funding provided for stormwater retrofits and improvements must enhance stormwater runoff treatment from existing roads and infrastructure with an **emphasis on green infrastructure retrofits**. Projects must be prioritized based on benefits to **salmon recovery and ecosystem health, reducing toxic pollution, addressing health disparities, and cost-effectiveness**. The department of transportation must submit progress reports on its efforts to reduce the toxicity of stormwater runoff from existing infrastructure, **recommendations for addressing barriers to innovative solutions**, and anticipated demand for funding each biennium.

# Update Stormwater Retrofit Prioritization

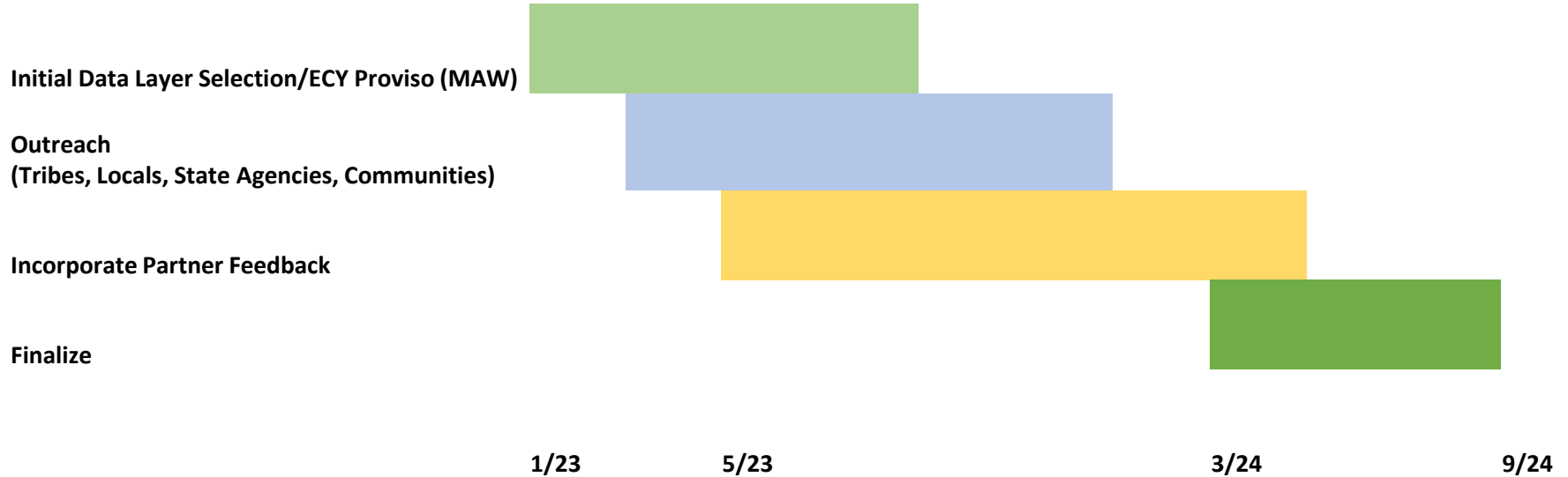
- Salmon Recovery and Ecosystem Health
- Reducing Toxic Pollution
- Addressing Health Disparities
- Cost-effectiveness



Compost Amended Vegetated Filter Strip



# Stand Alone Retrofit Prioritization Update Timeline & Outreach





## What's next for outreach - who

- Tribal consultation and outreach
- Outreach with counties and cities
- Outreach with other interested parties (e.g. NGO's, scientists and researchers)
- Outreach with community organizations and community members
- State and federal governments area involved with coordination and input

## What's next for outreach - what



- Comment on the draft prioritization (data layers and weighting)
- Opportunities for tribes, local agencies and interested parties to provide top several priority locations for SWR
  - Provide up to four locations at this QR code or web address: <https://arcg.is/1KiCva0>
- Ongoing invitation for collaboration, updating prioritization scheme and locations based on best available science and changing needs

# Partnerships



- WSDOT working to create process to streamline and invite partnership opportunities
- Partner on:
  - prioritizing locations
  - science and updates
  - specific projects with tribal and community benefits and interest
- GSI maintenance and workforce development

# Partnership Examples

## Urban Stormwater Partnership - I-5 Ship Canal Bridge Pilot



Image Credit: Parametrix and The Nature Conservancy

## Stewardship Partners Box of Rain-I-5 Ship Canal Bridge

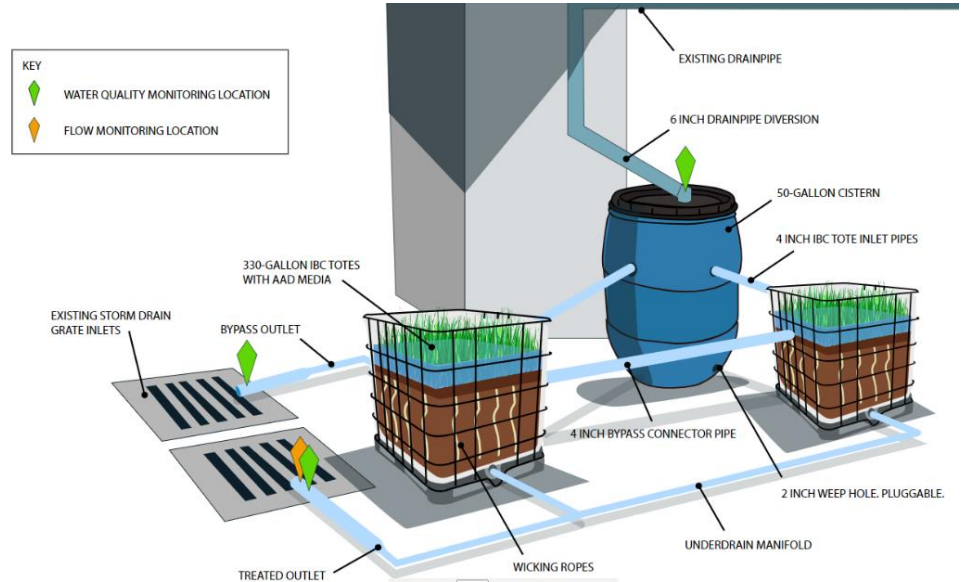


Image Credit: Stewardship Partners

# Partnerships and Collaboration

## 6PPD-quinone State/Tribal/Federal Workgroup

- Working on a charter to establish a 6PPD-quinone workgroup including state/federal/tribal staff
- Goals of this workgroup
  - to identify perceived versus real barriers and uncertainties
  - coordinate between all the different funding sources that are now available
  - coordinate on regional prioritization efforts

# Contact Information:

**Tony Bush**

**WSDOT Stormwater Branch Manager**

[Tony.Bush@wsdot.wa.gov](mailto:Tony.Bush@wsdot.wa.gov)

**Tatiana Dreisbach**

**WSDOT Stormwater Retrofit Outreach & Innovation Lead**

[Tatiana.Dreisbach@wsdot.wa.gov](mailto:Tatiana.Dreisbach@wsdot.wa.gov)

**Link to provide your priority locations**

<https://arcg.is/1KiCva0>

