

2024 Comprehensive Plan & Certification Outreach

Growth Management Policy Board

April 6, 2023



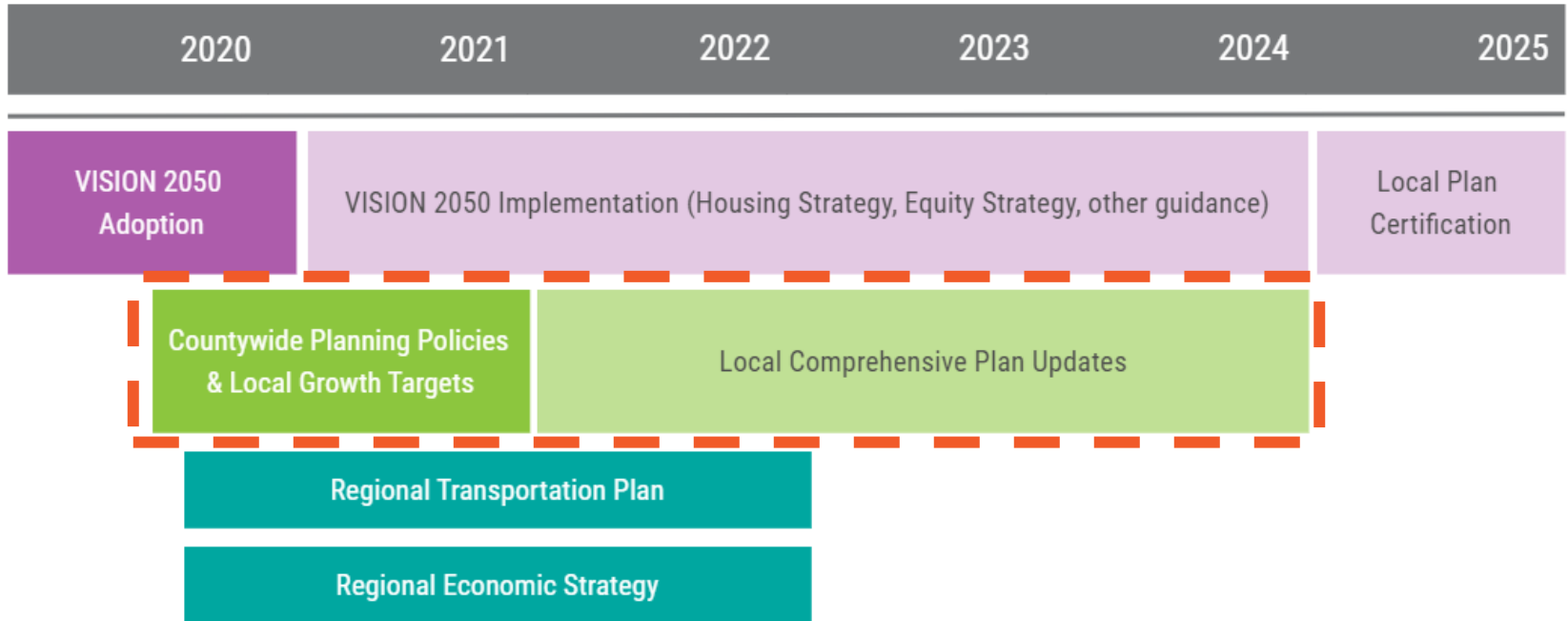
Puget Sound Regional Council

Overview

- Plan Update Process
- Outreach to Date & Next Steps
- Discussion



Schedule



Plan Review Process for Local Staff

1 Plan Visioning/ Scoping Stage

- a. Review VISION 2050 and applicable Consistency Tool
- b. Schedule a one-on-one consultation with PSRC staff
- c. Review previous certification reports

2 Plan/Policy Development

- a. Review policy-specific resources from PSRC
- b. Provide draft plans or policies to PSRC, with completed VISION 2050 Consistency Tool, for review/ comment

3 Review/Adoption Process

- a. Complete or update the VISION 2050 Consistency Tool and submit to PSRC along with the adopted plan or policies
- b. Work with PSRC to prepare certification report
- c. PSRC's boards review and certify



Objectives for Local Planning Outreach

- Help jurisdictions complete successful plan updates
- Build awareness of and communicate the goals and policies of VISION 2050
- Encourage submittal of draft plans for review
- Connect with consultants and non-planning staff who might be charged with managing local plan updates



Board and Committee Engagement

Growth Management Policy Board

- April 2021 – Plan Review Manual Update
- May 2022 – Plan Review Program & Outreach Overview
- April 2023 – Ongoing Plan Review Outreach

Regional Staff Committee

- February 2021– Plan Review Working Group Progress
- March 2021 – Draft Plan Review Manual
- February 2022 – Plan Review Outreach Overview
- February 2023 – Plan Review Outreach and Support



PSRC's Local Planning Outreach Process

2021



Plan review manual & consistency tool

June plan review webinar

2022



Plan review survey

Passport to 2044

2023



Passport to 2044

Outreach & meetings with local staff

Ongoing



Convenings and events

Releasing new resources and data products

Quarterly newsletter



PSRC's Local Planning Outreach Process

2021

Plan review manual & consistency tool

June plan review webinar

2022

Plan review survey

Passport to 2044

2023

Passport to 2044

Outreach & meetings with local staff

Ongoing

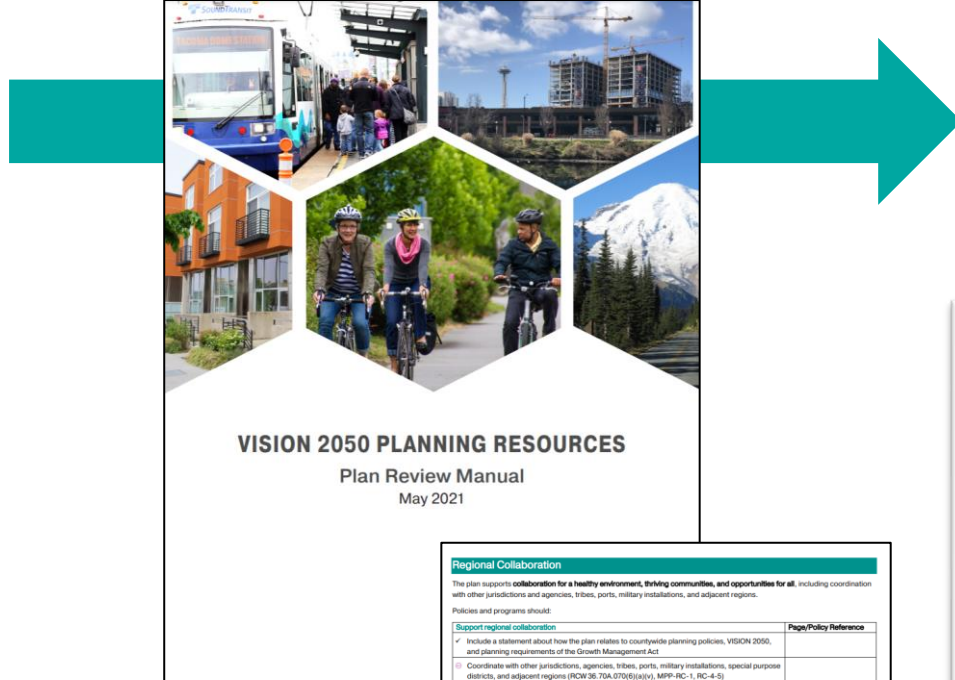
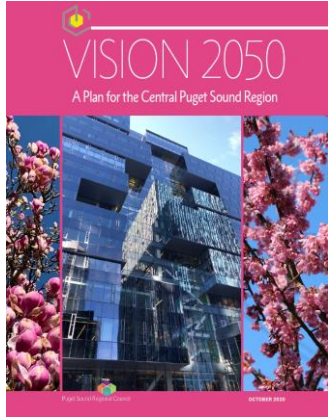
Convenings and events

Releasing new resources and data products

Quarterly newsletter



Plan Review Manual



VISION 2050 PLANNING RESOURCES

Plan Review Manual

May 2021

Regional Collaboration	
<p>The plan supports collaboration for a healthy environment, thriving communities, and opportunities for all, including coordination with other jurisdictions and agencies, tribes, ports, military installations, and adjacent regions.</p> <p>Policies and programs should:</p>	
Support regional collaboration	Page/Policy Reference
<ul style="list-style-type: none"> ✓ Include a statement about how the plan relates to countywide planning policies, VISION 2050, and planning requirements of the Growth Management Act. ② Coordinate with other jurisdictions, agencies, tribes, ports, military installations, special purpose districts, and adjacent regions (ROW 36.70A.070(6)(iv)), MPP-RC-1, RC-4-5) ② Prioritize services and access to opportunity for people of color, people with low incomes, and historically underserved communities to ensure all people can afford the resources and opportunities to improve quality of life and address past inequities (MPP-RC-2) ② Address land use, transportation, and housing opportunities and challenges related to military installations, when applicable (MPP-RC-6) ✓ Prioritize investments in centers, including regional centers, countywide centers, high-capacity transit areas with a station area plan, and other local centers (MPP-RC-9) ✓ Explore funding sources, changes to regulatory, pricing, taxing, and expenditure practices, and other fiscal tools to meet infrastructure and other needs (MPP-RC-10-11, RC-Action-7, RC-Action-9) 	
<p>Additional comments on Regional Collaboration or additional documents to share (optional): _____</p>	

2012 King County Countywide Planning Policies

With amendments ratified by June 25, 2016



City of Edmonds Comprehensive Plan



Adopted July 28, 2015
Updated December 15, 2017



PSRC's Local Planning Outreach Process

2021



Plan review manual & consistency tool

June plan review webinar

2022



Plan review survey

Passport to 2044

2023



Passport to 2044

Outreach & meetings with local staff

Ongoing



Convenings and events

Releasing new resources and data products

Quarterly newsletter



Local Governments Survey Results

Focus areas for plan update:



Housing



Transportation



Climate



Equity

Local needs for updates:

- Information on requirements and what has changed
- Communication with PSRC throughout the plan development process



PASSPORT TO 2044

Comprehensive Plan
Workshop Series





Passport to 2044 Series



[Comprehensive Planning](#)

[Climate](#)

[Economic Development](#)

[Transportation](#)

[Housing - Racially Disparate Impacts](#)

[Equity - Resources & Engagement](#)

[Tribal Coordination](#)

[Critical Areas](#)

[TOD and Centers](#)

[Housing - Need & Capacity](#)

Elected Officials – May 18



Overview of Passport to 2044



Over 1,000 live
webinar
attendees

80%

Representation
from cities and
counties



International
participation!



37
Guest Speakers



PSRC's Local Planning Outreach Process

2021



Plan review manual & consistency tool

June plan review webinar

2022



Plan review survey

Passport to 2044

2023



Passport to 2044

Outreach & meetings with local staff

Ongoing



Convenings and events

Releasing new resources and data products

Quarterly newsletter



Meetings with Local Jurisdictions

Meeting one-on-one with planners and consultants

- PSRC has reached out to all 86 jurisdictions and met with over half so far
- Hearing that planning is underway and common key issues from staff



Jurisdictions Met With



Upcoming Event for Elected Officials

PLEASE
SHARE!

The flyer features a central vertical image of a scenic Puget Sound coastline with mountains, a city skyline, and a harbor. This image is framed by a large, stylized 'P' shape composed of various smaller images: a train, a mountain peak, a city skyline, a harbor with boats, a forest, and a group of people. The text is arranged around this central graphic.


PASSPORT TO 2044:
Key Topics for Elected Officials and Planning Commissioners

The Passport to 2044 series continues with a session for elected officials and planning commissioners in the central Puget Sound region to learn more about the importance of the comprehensive plan periodic updates and key issues emerging during the process.

REGISTER NOW!

 Thursday, May 18, 2023
12:00 p.m. – 1:30 p.m.  Online via Zoom
[» Webinar registration page](#)

Highlights of the event include:

- Welcoming Remarks**
Councilmember Claudia Balducci, PSRC President
- Planning Framework in Washington State and the Central Puget Sound Region**
- Big Topics in Local Comprehensive Plans**
- Panel of Elected Officials**
Councilmember Teresa Mosqueda, City of Seattle
Councilmember Ed Prince, City of Renton
Mayor Kim Roscoe, City of Fife
Mayor Pro Tem Bryan Wahl, City of Mountlake Terrace

This is one in a series of workshops that include deep dives on specific topic areas of periodic comprehensive plan updates. Past recordings and event materials are available on [ESRC's website](#). Sign up to be on the list for information on upcoming events and resources [here](#).

Questions? Contact Maggie Moore at mmoore@psrc.org

 The primary audience for this webinar are the elected officials and planning commissioners in the central Puget Sound region. Planners, consultants, and staff involved with comprehensive planning are also welcome to attend.

May 18, 2023: 12:00 – 1:30 pm

- Virtual and recorded webinar
- Highlights key issues for jurisdictions while updating comprehensive plans
- Panel of elected officials sharing their experience



Upcoming Passport to 2044

Staff focused future sessions

- Takeaways from 2023 legislative session
- Using an equity analysis tool for planning

Current Survey

- Reaching out to hear what other outreach is needed
- Exploring more events with networking opportunities



PSRC Plan Review Outreach Survey: Passport to 2044

PSRC is continuing to support cities and counties with outreach, guidance, and other materials for the 2024 comprehensive plan updates and certification. We have a few questions regarding our outreach so far and plans for the future. This will allow us to continue providing relevant outreach events for your comprehensive plan update.

We estimate this survey should take less than 5 minutes.



PSRC's Local Planning Outreach Process

2021



Plan review manual & consistency tool

June plan review webinar

2022



Plan review survey

Passport to 2044

2023



Passport to 2044

Outreach & meetings with local staff

Ongoing



Convenings and events

Releasing new resources and data products

Quarterly newsletter



PSRC Guidance and Resources

Available Now:

- [Conservation Toolkit](#)
- [Growth Target Guidance](#)
- [Economic Development Element Guide](#)
- [Tribal Coordination](#)
- [Community Data Profiles](#)
- [Equitable Engagement](#)
- [TOD + Centers Guidance](#)
- [Housing Element Guide](#)
- [Climate Change Guidance](#)
- [Draft Transportation Guidance](#)

Upcoming:

- Growth Outreach Toolkit
- Equity Planning Resources
- Land Use Vision Forecast

VISION 2050 Planning Resources

PSRC develops guidance, research, and data products to support local planning and advance VISION 2050. Browse resources below by policy topic area.



Regional Plans

- > [VISION 2050](#)
- > [Regional Transportation Plan](#)
- > [Regional Economic Strategy](#)

Guidance by Policy Topic Area (from PSRC and partner agencies)

Regional Collaboration and Equity	>
Regional Growth Strategy	>
Environment	>
Climate Change	>
Development Patterns: Centers and Transit-Focused Growth	>

[VISION 2050 Planning Resources](#)

[Previous Certification Reports](#)



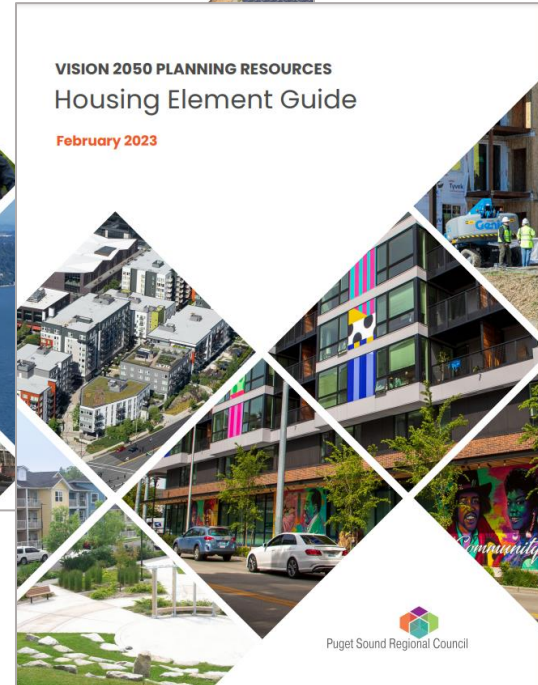
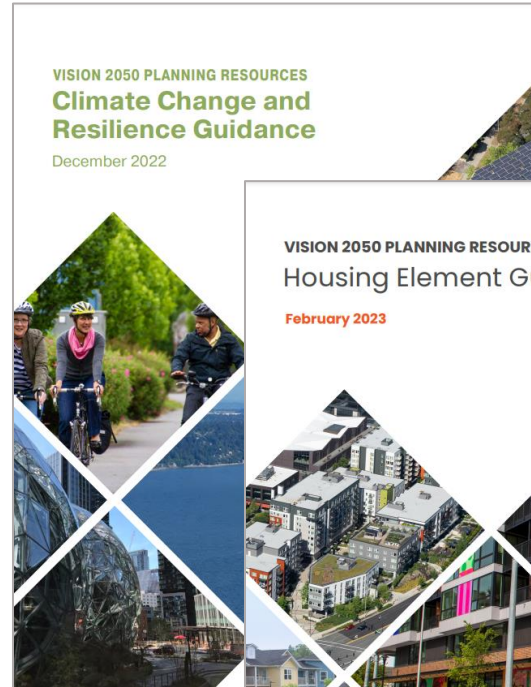
Element Guides

Housing Element Guide

- Provides guidance for developing effective housing elements
- Addresses housing choices and affordability

Climate Change and Resilience Guidance

- Provides information on emission reduction and resilience activities



Guidance Documents

Equitable Engagement

- Includes strategies, resources and considerations
- Focuses on techniques for reaching historically impacted communities

Coordination with Tribes

- Provides guidance on conducting meaningful consultation with Tribes
- Includes best practices from the region

Puget Sound Regional Council
VISION 2050 Planning Resources
Equitable Engagement for Comprehensive Plans
JULY 2022

The Growth Management Act establishes a baseline for public participation as a component of the planning process. However, many traditional methods and approaches do not facilitate effective engagement with historically impacted communities.

Traditional outreach methods, such as online open houses, public hearings, and online surveys, often only reach a subset of community members. These community members are typically those who are already familiar with the local planning process and have the time to stay up to date with what is happening. As a result, many planning processes fail to adequately consider the perspectives of marginalized communities most impacted by planning decisions. This can lead to additional burdens on impacted communities, exacerbating disparities in the region.

VISION 2050 calls for PSRC to develop a regional equity strategy with tools, resources and strategies for centering equity, including best practices for ensuring equitable engagement. This guide considers new strategies and practices to build a foundation for comprehensive planning efforts.

This guide includes four recommendations for conducting equitable engagement: identify the most impacted, develop public engagement goals and outcomes, remove barriers to engagement, and carry out engagement, and questions to consider. This guide provides resources linked throughout the document to support these strategies.

VISION 2050 Planning Resources | Equitable Engagement for Comprehensive Plans

Puget Sound Regional Council
VISION 2050 Planning Resources
Coordination with Tribes in Comprehensive Planning

Tribes of the Salish Sea

The central Puget Sound region is a part of a larger area that has been the traditional ancestral territory of the Coast Salish peoples. The Coast Salish Tribes have lived here since time immemorial and while each Tribe is unique, all share in having a deep historical connection and legacy of respect for the land and natural resources. These sovereign Tribal Nations enrich the region through environmental stewardship, cultural heritage, and economic development, and collaborate with local governments to shape the region's future.

Under treaties signed with the United States in the 1850s, many Tribes in the region ceded most of the state of Washington, but in exchange reserved fishing and hunting rights including off-reservation rights to fish in all usual and accustomed fishing grounds and the right to hunt and gather on open and unclaimed lands.

PSRC recognizes and respects the full sovereignty of each Tribe and its traditional lands located within the jurisdictional boundaries of PSRC members.¹ By law, Tribal sovereignty must be observed and protected. As sovereign nations, each Tribe has its own form of government, constitution or charter, laws, and planning processes.

¹VISION 2050 aligns with the principles of government-to-government relationships stated in the Washington Centennial Accord of 1989, and in the Washington State administrative rule (May 2019) governing prior and informed consent and consultation for any policy, plans, projects, programs, or actions that directly and tangibly affect Indian Tribes' sovereignty and treaty rights.


VISION 2050 Planning Resources | Coordination with Tribes in Comprehensive Planning



Topic Specific Outreach



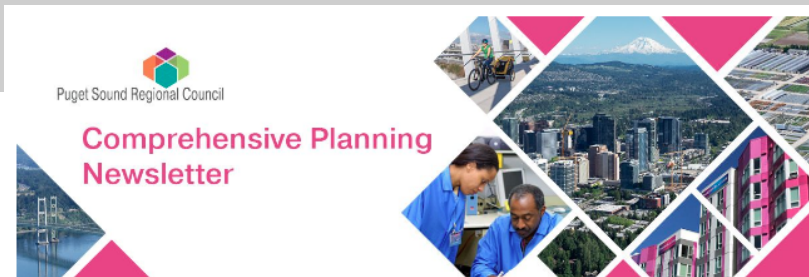
Regional Housing Data to Support Local Housing Efforts - March 2023

 Puget Sound Regional Council
45 subscribers [Subscribe](#)

[Like](#) 0 [Comment](#) [Share](#) [Download](#) [Save](#) [More](#)



Sign up for
PSRC's
Comprehensive
Planning
Newsletter @
<http://eepurl.com/hQnYmj>



Welcome to PSRC's comprehensive planning newsletter, highlighting information on resources for local plan updates and the plan review process!

Please forward this newsletter on to others who may be interested. *You can unsubscribe at any time from this list by clicking "unsubscribe" at the bottom of this email.*

Contact Maggie Moore at mmoore@psrc.org with suggestions, questions, or comments.

Passport to 2044 – Periodic Update Workshop on June 15

PSRC, the Washington State Department of Commerce, and MRSC are hosting an online workshop on June 15 from 9:30 a.m. – 12 p.m. on comprehensive plan updates. The workshop will officially kick-off the 2024 class of plan updates! We will cover what's new in the Growth Management Act and VISION 2050 and explore the planning issues communities are most interested in. Attendees will also have an opportunity to connect with other staff working on comprehensive plans throughout the region.

Check out the [save the date](#) and share it with others.

What's New in GMA

The 2022 Washington Legislative Session adjourned in March with some changes in the local comprehensive planning process. Below are a couple key bills from the session. Check out the Washington State Department of Commerce's recap in their [April newsletter](#).



Discussion

Are PSRC's support and engagement efforts helping your jurisdiction?

Are there other things cities and counties need for their plan updates?

Do you have any additional suggestions on how to share information on the plan review program?





Thank You

Maggie Moore
Senior Planner
MMoore@psrc.org

