

VISION 2050

Recommend Certification of Kitsap County CPPs

April 6, 2023

Growth Management Policy Board



Puget Sound Regional Council

Countywide Planning Policies & Growth Targets

- First major local implementation step for VISION 2050
- Countywide process to establish growth targets and adopt CPPs
- Per VISION 2050, deadline to update CPPs in Dec 2021
- Upcoming certification action for King and Pierce counties
- More detail and guidance than the multicounty planning policies
- Growth targets establish population and employment growth for comprehensive plans

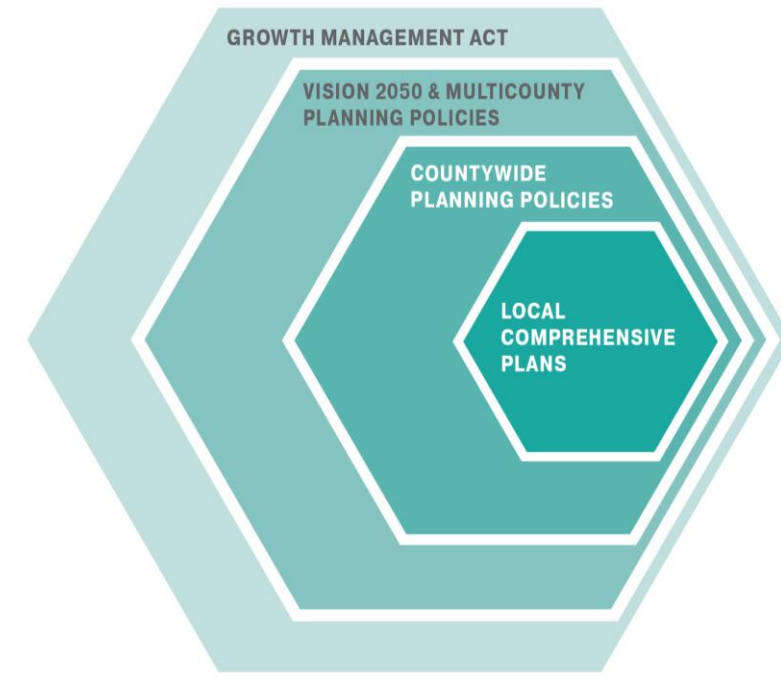
CPP Updates - Policy Themes

Regional Centers Framework

- Updated regional centers policies, countywide centers

VISION 2050 policy direction

- Expanded focus on high-capacity transit
- Climate change
- Equity and displacement
- Coordination with other partners (tribes, military)



Kitsap Countywide Planning Policies



Kitsap CPP Highlights

- Collaborative process through Kitsap Regional Coordinating Council
- Updated process and criteria to designate centers
- Chapters on engagement with Tribes and military
- Growth targets focusing significant new growth in Metro, Core, and High Capacity Transit Communities

Staff Recommendation

Recommend the Executive Board certify that the Countywide Planning Policies for Kitsap County are consistent with the VISION 2050 multicounty planning policies and the Regional Transportation Plan

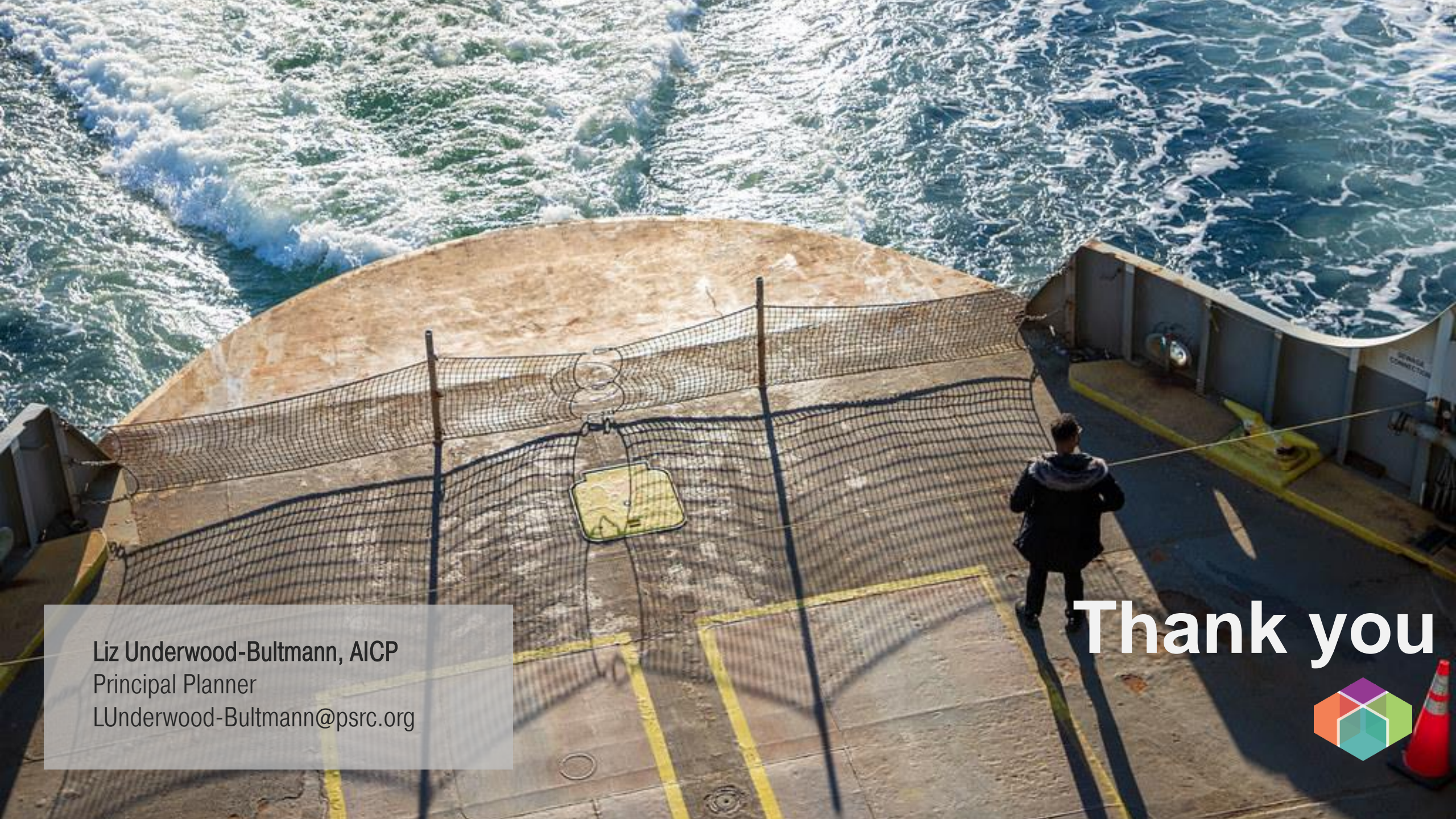
Next Steps

Transportation Policy Board (April 13)

- Certification on consent agenda

Executive Board (April 27)

- Certification on consent agenda



Liz Underwood-Bultmann, AICP
Principal Planner
LUnderwood-Bultmann@psrc.org

Thank you

