



Puget Sound Regional Council

Equity Advisory Committee | Remote Only
Date: Thursday, April 6, 2023 from 5:30-7:30 pm
Optional: Post-Meeting Q&A from 7:30-8:00 pm

1. Welcome (5:30) – *Shannon Turner & Julius Moss, Co-Chairs*

2. Reports

- a. Meeting Summary for March 2, 2023*
- b. Staff Announcements

3. Discussion Item (6:00)

- a. Equity Pilot Program Co-Creation* – *Kelly McGourty, Charles Patton & Noah Boggess, PSRC*

4. Break (6:45)

5. Discussion Item (6:55)

- a. Equity Pilot Program Co-Creation cont.* – *Kelly McGourty, Charles Patton & Noah Boggess, PSRC*

6. Information Item

- a. PSRC General Assembly: Save the Date Flyer

7. Zoom Poll (7:25)

8. Adjourn (7:30)

9. Next meeting: May 4, 2023

Optional Post-Meeting Q&A (7:30) – *Charles Patton, PSRC*

*Supporting materials attached.

Members can access the attendance sheet [here](#) to complete and submit to finance@psrc.org for compensation.

Zoom Remote Connection Details

- To join the webinar, please click the following link: <https://psrc-org.zoom.us/j/83724556394?pwd=K1I3TDc2RTVXUmRGOGQxUXg1dFJxUT09> and enter Passcode: 980455.
- To join via phone, call 877 853 5257 (Toll Free) or 888 475 4499 and enter Webinar ID: 837 2455 6394 and Passcode: 980455.
- For TTY-based telecommunications relay service dial 711.
- العربية | Arabic, 中文 | Chinese, Deutsch | German, Français | French, 한국어 | Korean, Русский | Russian, Español | Spanish, Tagalog, Tiếng việt | Vietnamese, visit <https://www.psrc.org/contact/language-assistance>.



Puget Sound Regional Council

Equity Advisory Committee Meeting Summary

Date: March 2, 2023

Location: Remote Only

Presentations from the meeting are available on the [Equity Advisory Committee webpage](#). Audio recording of the meeting is available by request.

Welcome

Shannon Turner, from Kitsap County, and Charles Patton, PSRC, called the meeting to order at 5:30 pm. The co-chair welcomed everyone and asked Mikayla to begin the roll call for attendance.

Staff Announcements & Co-Chair Selection Update

Charles shared that Julius Moss and Shannon Turner will serve as co-chairs for 2023, and he thanked both members for being willing to lead in this capacity. He also reminded members that all meeting materials can be found at the EAC webpage [here](#), with the agenda posted one week prior to the meeting, and all presentations available typically the day prior to a meeting.

Project Selection Process and Equity: Review of PSRC's Current Process Continued

Staff continued to brief the committee on the current PSRC project selection process. The discussion also included a simulation of the current PSRC scoring and evaluation process. Members evaluated transportation projects from previous years to get more familiar with the process.

You can view the presentation [here](#).

Questions? Contact Kelly McGourty, Director of Transportation Planning, at kmcgourty@psrc.org.

Adjourn

At the close of the meeting, members participated in a poll to evaluate the meeting. The meeting adjourned at 7:30 pm.

Members Represented at the Table

See attached attendance roster.

PSRC Staff and Other Guests Present

Mikayla Svob, PSRC

Charles Patton, PSRC

Noah Boggess, PSRC
Kelly McGourty, PSRC
Ben Bakkenta, PSRC
Laurie Arnold, Clarity Consulting NW
Erin Hogan, PSRC



Puget Sound Regional Council

DISCUSSION ITEM

April 6, 2023

TO: Equity Advisory Committee

FROM: Charles Patton, Program Manager – Equity Policy and Initiatives

SUBJECT: Project Selection Co-creation & Review to Date

IN BRIEF

Between January and September 2023, the Equity Advisory Committee (EAC) will work with PSRC staff to review PSRC's current project selection process as it relates to equity, and ultimately develop an equity pilot program to distribute approximately \$6 million of PSRC's 2025-2026 Federal Highway Administration (FHWA) funds. The EAC will also develop recommendations for potential further equity improvements in future PSRC project selection processes.

During the upcoming meeting of the Equity Advisory Committee, members will revisit what they have learned over the course of the first quarter of 2023. Following this brief review, members will begin the process of co-creating the Equity Pilot Program, sharing their thoughts on topics such as what projects should the Pilot prioritize, should certain locations be prioritized, how can staff improve the rubric, etc.?

DISCUSSION

PSRC conducts a project selection process to distribute federal transportation funds every two years. The process and the criteria used to evaluate every project is based on policies and outcomes detailed in [VISION 2050](#) and the [Regional Transportation Plan](#). These include elements such as accessibility, multimodal mobility, safety, equity and climate, as well as financial and project readiness considerations.

In addition to substantial improvements to how equity was incorporated into the existing project selection process, as part of the 2022 *Policy Framework* approximately \$6 million of PSRC's FHWA funds were set aside for an Equity Pilot Program. The EAC is asked to co-create this program, developing the parameters by which projects would be selected for funding, with an overarching focus on improving equity with transportation investments.

During the January meeting, members of the Equity Advisory Committee were provided an overview of the current project selection process and outcomes. These discussions were complemented by a meeting in February when members heard examples of how other MPOs have incorporated equity into their project selection process and a meeting in March when members scored and evaluated projects from the 2022 project selection process.

During the April meeting, staff will briefly revisit what they covered from January to March. Following this brief review, staff will begin the process of co-creating the Equity Pilot Program with members of the Equity Advisory Committee.

Members will be asked questions such as:

- What types of transportation projects lead to more equitable outcomes?
- What's missing from our current process? Are there any issues with our current process?
- How should our current Equity Criteria be adjusted?
- Do you have any suggestions for how we can improve our rubric?

Attachment 1 has been included to help members prepare to answer these questions. Additionally, for reference, the materials related to the project selection evaluation process can be found on the [January](#), [February](#), and [March](#) EAC webpages. The rubric can be found on the [Regional FHWA Project Evaluation Criteria](#) (see pgs. 10 – 12). And the 2022 transportation project applications can be found on the [Regional FHWA Applications](#) webpage. Five applications serve as examples of transportation projects that have received high scores on our Equity Criterion, receiving 9 out of 10 possible points. They include:

- Auburn - East Valley Highway Widening
- Community Transit - Swift Gold Line Zero Emission Expansion Buses
- Pierce Transit - Pacific Avenue/SR 7 Bus Rapid Transit
- SeaTac- Airport Station Area Pedestrian Improvements
- Sound Transit - Boeing Access Rd Infill Station

Next Steps

The next meeting of the Equity Advisory Committee will be held on May 4, 2023. During this meeting, members will continue the process of co-creating the Equity Pilot Program, helping to shape the future of project selection at PSRC.

Lead Staff

For more information, please contact Kelly McGourty, Director of Transportation Planning, at kmcgourty@psrc.org or Charles Patton, Program Manager – Equity Policy and Initiatives, at cpatton@psrc.org.

Equity Criterion



Project Evaluation Equity Criterion

Section 1 – Disparities / Gaps

- Identifying the population groups to be served by the project
 - people of color, people with low-income, older adults, people with disabilities, youth, people with Limited English Proficiency, populations located in highly impacted communities, areas experiencing high levels of unemployment or chronic underemployment, immigrants and refugees, and transit dependent populations
- Identifying the disparities or gaps for these population groups
- Describing how the project addresses those disparities or gaps

Project Evaluation Criterion - Equity

Section 2 - Outreach

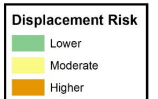
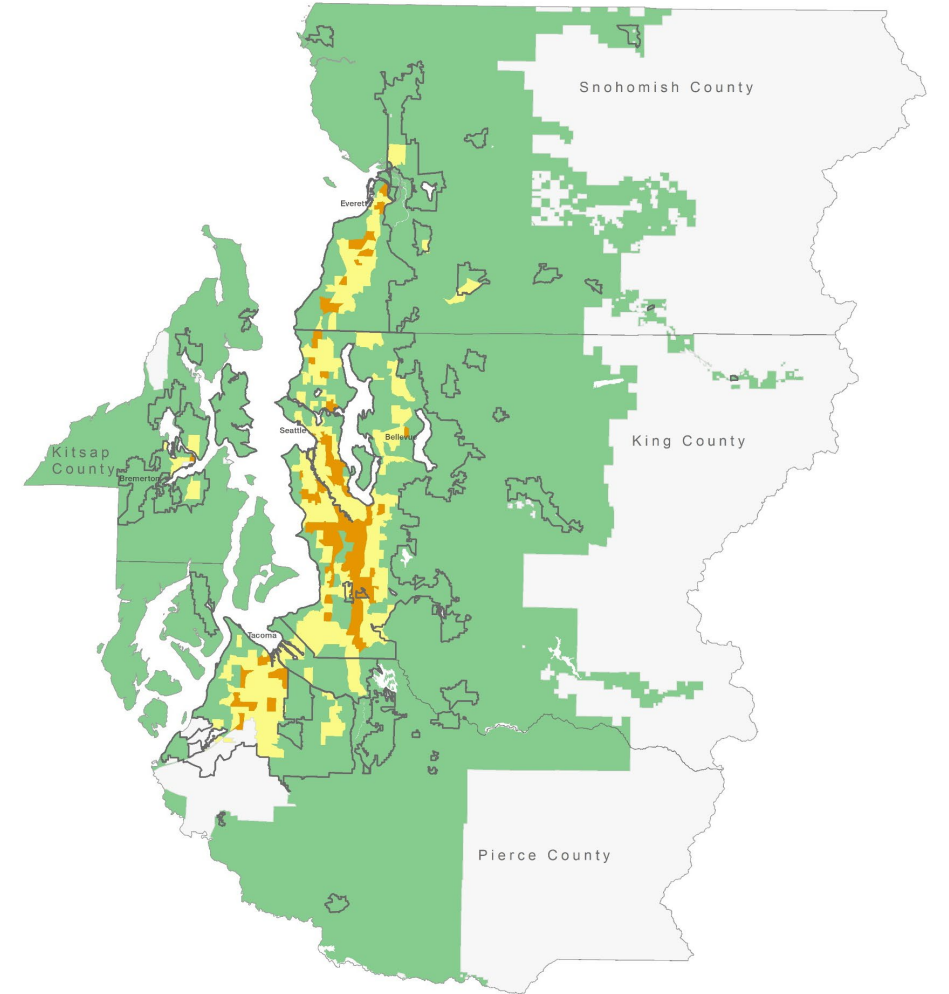
- How the development of the project is informed and influenced by public outreach and engagement



Project Evaluation Criterion - Equity

Section 3 - Displacement

- The location of the project in relation to areas of displacement risk
- Agency mitigation strategies to address displacement risks



Equity Criterion Disparities / Gaps Rubric (7 pts)

High

Medium

Low

Shares supporting **data** that shows the size of the marginalized populations that would benefit is **above the regional average**.

Provides a **clearly** demonstrated **benefit** and reduces a clearly demonstrated **disparity** for one or more of the **marginalized populations**.

The benefit and disparity are clearly **tied to travel to, from or within the center**.

Shares supporting **data** but **fails** to show that the size of the marginalized populations that would benefit is above the **regional average**.

The **disparity and benefit** has only been **partially demonstrated** for travel to, from or within the center for any of the marginalized populations.

Fails to include any **data**.

The **disparity and benefit** has **not been demonstrated** for travel to, from or within the center for any of the marginalized populations.

Equity Criterion Outreach Rubric (2 pts)

High

Medium

Low

Clearly addresses a **demonstrated problem** or need specifically identified by members of **marginalized communities**, either from general or project specific outreach.

Addresses a **demonstrated problem or need** of the transportation system and **connects broadly** to more **general feedback** provided by members of marginalized communities, either from general or project specific outreach.

No clear connection demonstrated between the development of the **project** and **outreach** heard from members of marginalized communities.

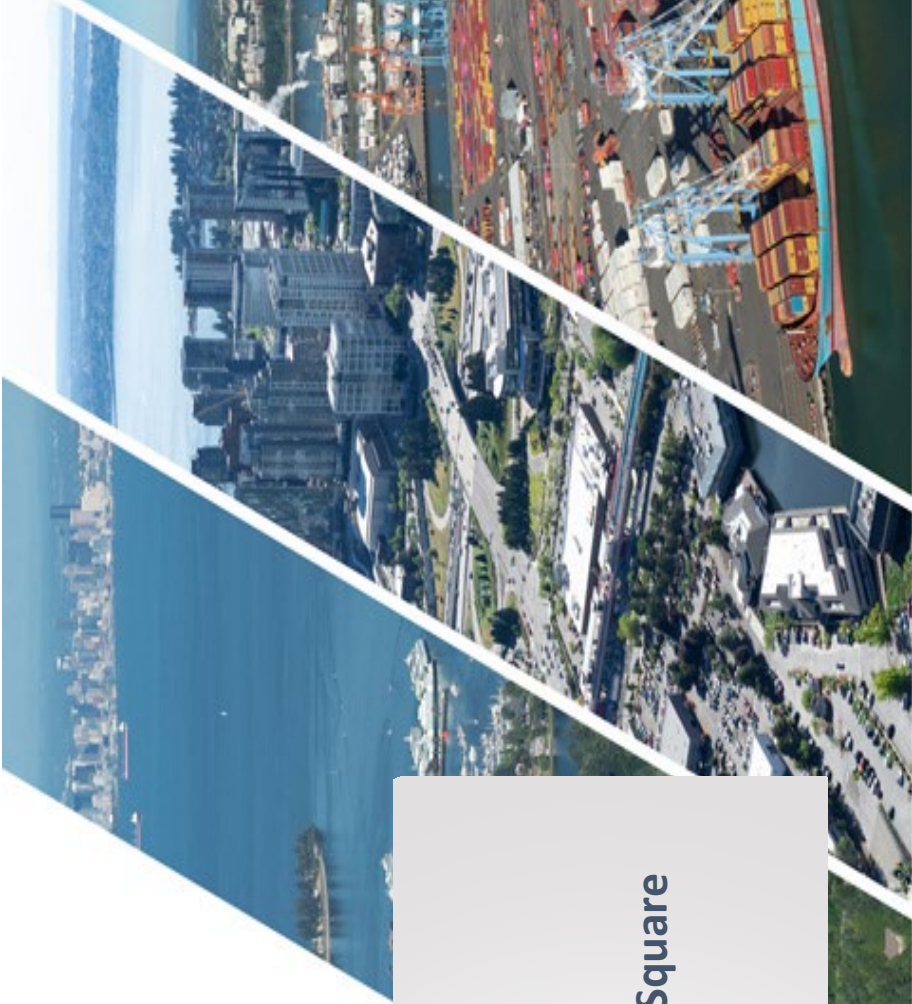
Equity Criterion Displacement Rubric (1 pt)

High

Located in an area of **low displacement risk**. Or, located in an area that is of **medium or high displacement risk** and the applicant clearly demonstrates the jurisdiction has **policies** in place to address and **reduce** the overall likelihood of **displacement**.

Low

Located in an area of **medium or high displacement risk** and **fails** to demonstrate that the jurisdiction has **policies** in place to address and **reduce** the overall likelihood of **displacement**.



NEW DATE!

PSRC GENERAL ASSEMBLY

MAY 30, 2023

11:00 AM – 1:00 PM

**Embassy Suites, Seattle Downtown Pioneer Square
255 South King Street, Seattle 98104**

Registration will open in early April.

The full Assembly includes all mayors, county executives, and council and commission members from member jurisdictions, tribes, and representatives of statutory members. Each elected representative is a voting member of the General Assembly.

