

Bicycle/Pedestrian Facility Typology Update

Bicycle Pedestrian Advisory Committee – March 14, 2023



Mentimeter Survey Instructions

Mentimeter

Instructions

Go to

www.menti.com

Enter the code

2676 3936



Or use QR code



What We Will Cover Today

- 1) Proposed purpose of the typology based on feedback
- 2) How we addressed suggested edits from January meeting
- 3) An overview of the updated typology
- 4) Outstanding questions from your suggested edits
- 5) Next steps



Goals For Today's Meeting

- ➔ 1. Confirm proposed primary and secondary purposes for typology.
- ➔ 2. Confirm recent revisions accurately reflect suggested BPAC edits.
- ➔ 3. Address outstanding questions that require committee discussion.

How feedback will be used: Staff will use feedback to make final revisions to typology before presenting to other PSRC committees. At May BPAC meeting, we will look at the facility data inventory scope and criteria, including potential updates to facility types included.



Background

- ❑ PSRC has been working with the BPAC to update the Regional Bicycle and Pedestrian Facility Typology, last updated in 2018.
- ❑ At the January meeting, BPAC members were asked to provide feedback on the **purpose(s)** of the facility typology.
- ❑ Defining the primary and secondary purposes will help guide the content and format of the typology, as well as potential future applications for this resource.



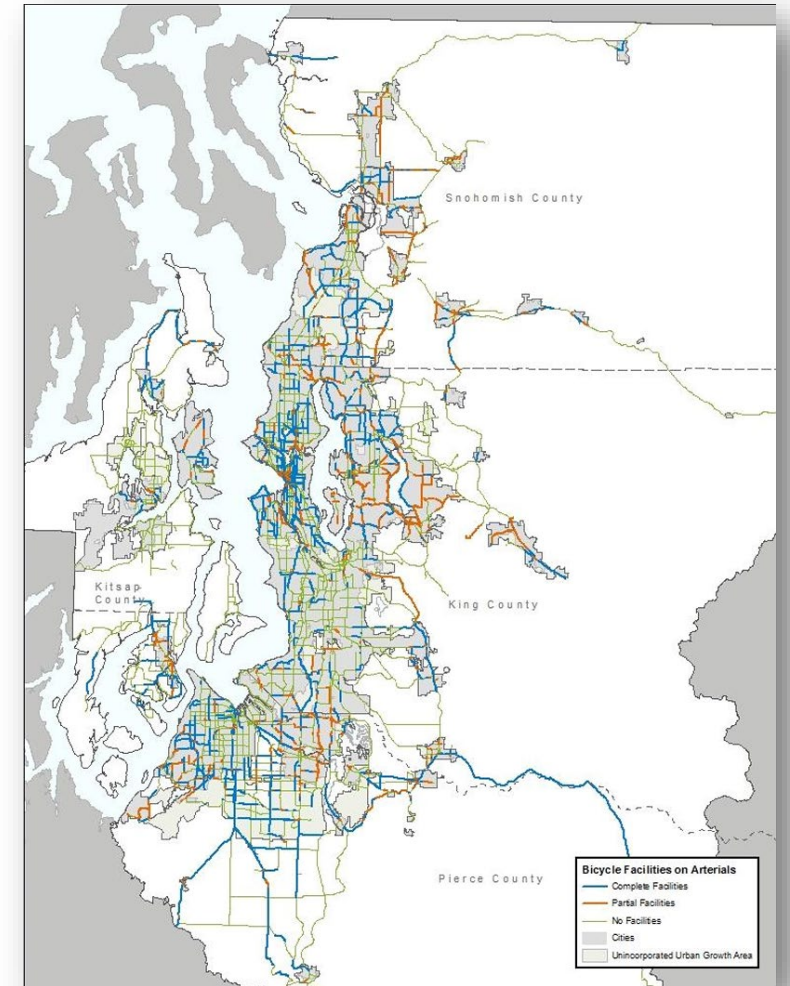
Typology Purpose

- Based on feedback provided, PSRC proposes that the typology will **primarily** continue to be used as a basis for PSRC's bicycle and pedestrian **facility data collection and analysis** work.
- Typology can be further used:
 - To **encourage consistent facility terminology** across jurisdictions and within future PSRC work.
 - As a **technical and educational resource** for jurisdictions and the general public.



Purpose Feedback

- Do you generally support the proposed primary and secondary purposes for the typology?
- Do you have any further feedback on the purpose and potential applications of the typology?



Recent Work

- ✓ At January meeting, BPAC members were asked to provide **feedback on the format and content** of draft typology, as well as for **local examples** to include.
- ✓ PSRC staff then worked to incorporate committee feedback into the updated draft, in consideration of typology purpose.
 - **Attachment A** shows the latest version of the typology.
 - **Attachment B** overviews committee feedback and PSRC staff responses, and outstanding questions for committee discussion.

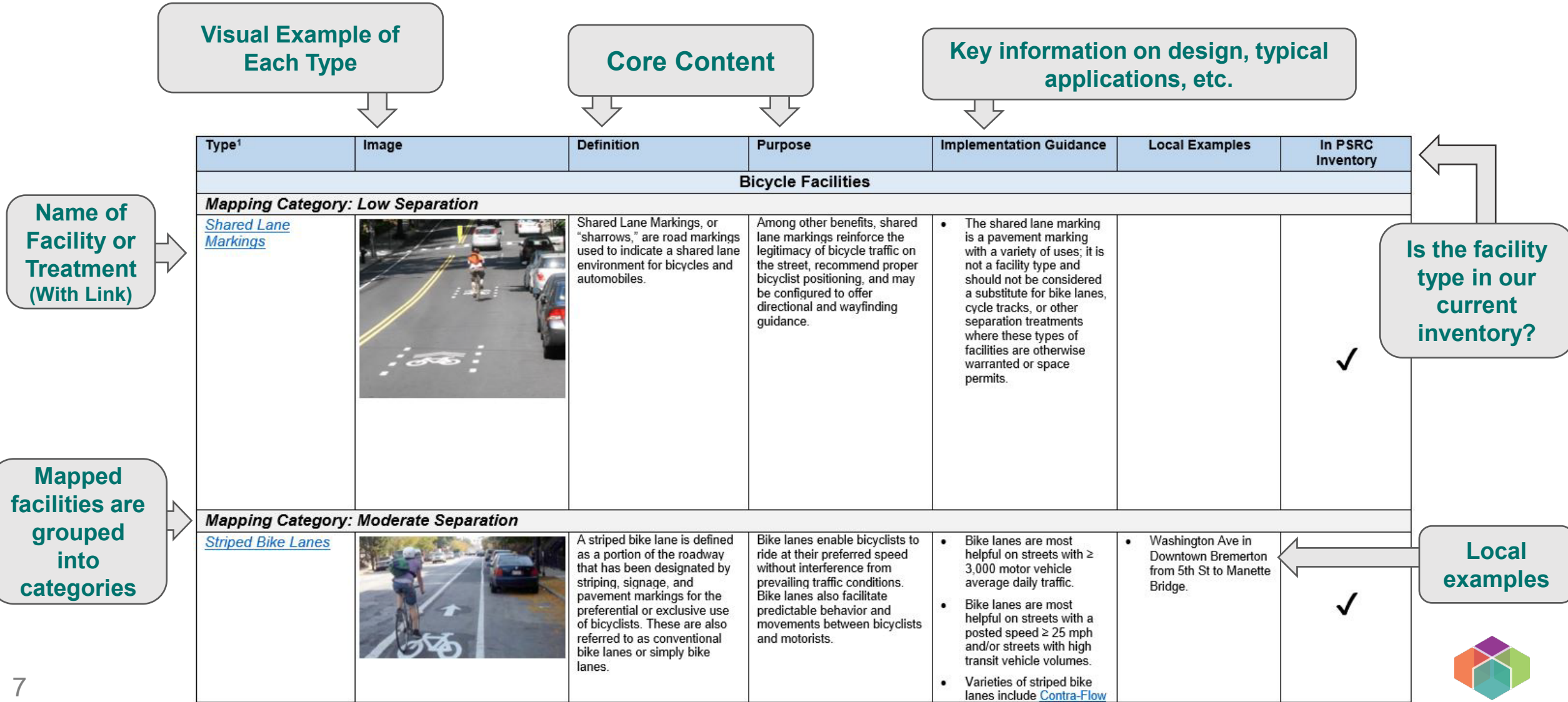


Overview of Typology Sections

- 1. Bicycle Facilities** (shared lane markings, striped bike lanes, buffered bike lanes, neighborhood greenways, protected bike lanes, and raised bike lanes)
- 2. Pedestrian Facilities** (sidewalks)
- 3. Shared Use Facilities** (pedestrian and bicycle bridges and tunnels, shared use paths, sidepaths, paved shoulders, and advisory shoulders)
- 4. Street Design Elements** (curb extensions and vertical speed control elements)
- 5. Intersection Design Elements** (crosswalks and crossings, bicycle intersection treatments, pedestrian signals, bicycle signals)

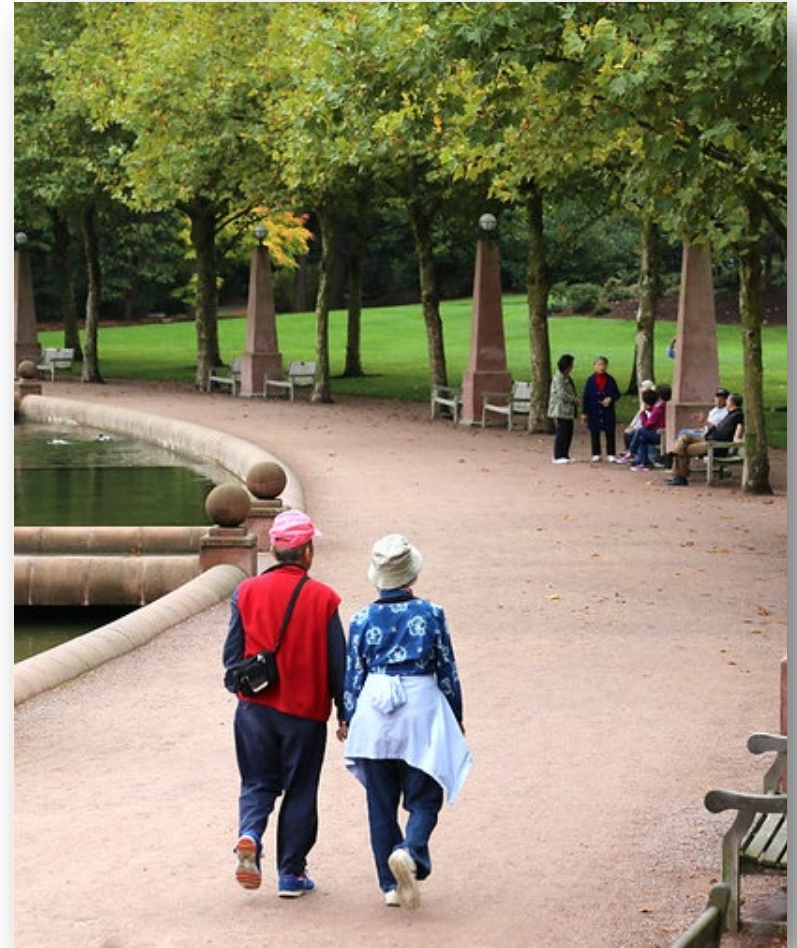


Overview of Typology Structure



Content Feedback

Do you have any feedback on whether the recent revisions of the typology accurately capture committee suggestions?



Local Examples

We currently do not have any local examples from our region for the following facility and treatment types:

- **Shared Lane Markings**
- **Sidewalks**
- **Paved Shoulders**
- **Curb Extensions**
- **Vertical Speed Control Elements**

- **Crosswalks and Crossings**
- **Bicycle Intersection Treatments**
- **Pedestrian Signals**
- **Bicycle Signals**

Can you help us identify additional local examples of these or other included facility types?



Outstanding Questions

- **Should “Sidepaths” be removed as a category? Does the Shared Use Path definition adequately cover both types?**
- **Should Shared Lane Markings/ Sharrows be removed as a category?**
- **Should paved shoulders be considered a facility type? If so, should there be a delineation between paved shoulders in urban areas versus rural areas?**
- **Should bicycle parking be added as a facility type?**
- **Should we expand the pedestrian guidance section to include other forms of pedestrian paths beyond sidewalks?**
- **Should we add additional guidance on viable forms of protection for Protected Bike Lanes (PBLs)? Specifically, whether flex-posts are a form of protection for PBLs.**
- **Should the typology link to additional guidance/ readings suggested by commenters? If so, which resources should be included?**



Next Steps

1.

Following this meeting, PSRC staff will finalize the format and content of the typology.

2.

The updated typology will then be presented to other PSRC committees for their consideration of potential applications.

3.

At the next BPAC meeting, the committee will discuss and potentially decide on the scope of facility inventory, as well as proposed updates to the data collection methodology.

4.

Data collection for the inventory update is set to begin in late Spring 2023.

