



# Project Selection & Equity

Review of PSRC's Current Process cont.

February 2, 2023

Equity Advisory Committee (EAC)



Puget Sound Regional Council



# Questions for the Equity Advisory Committee

- Are the equity criteria clear? Do they lead to an improved evaluation of transportation projects from an equity perspective?
  - Is anything missing?
- Do the projects that were ultimately awarded funding provide overall benefits?
  - Do the projects provide improvements to equitable outcomes?
  - Do you see any gaps or needs not reflected in the projects?



# Key Takeaways – Goals for This Work

## ATTACHMENT 1: EQUITY PILOT PROGRAM OVERVIEW

**Purpose** = review how equity is addressed in PSRC's project selection process and make recommendations for improvements

**Process through Pilot development:**

- review current equity criteria of PSRC and other MPOs
- review PSRC funded projects
- identify needs and gaps
- develop pilot to test potential improvements

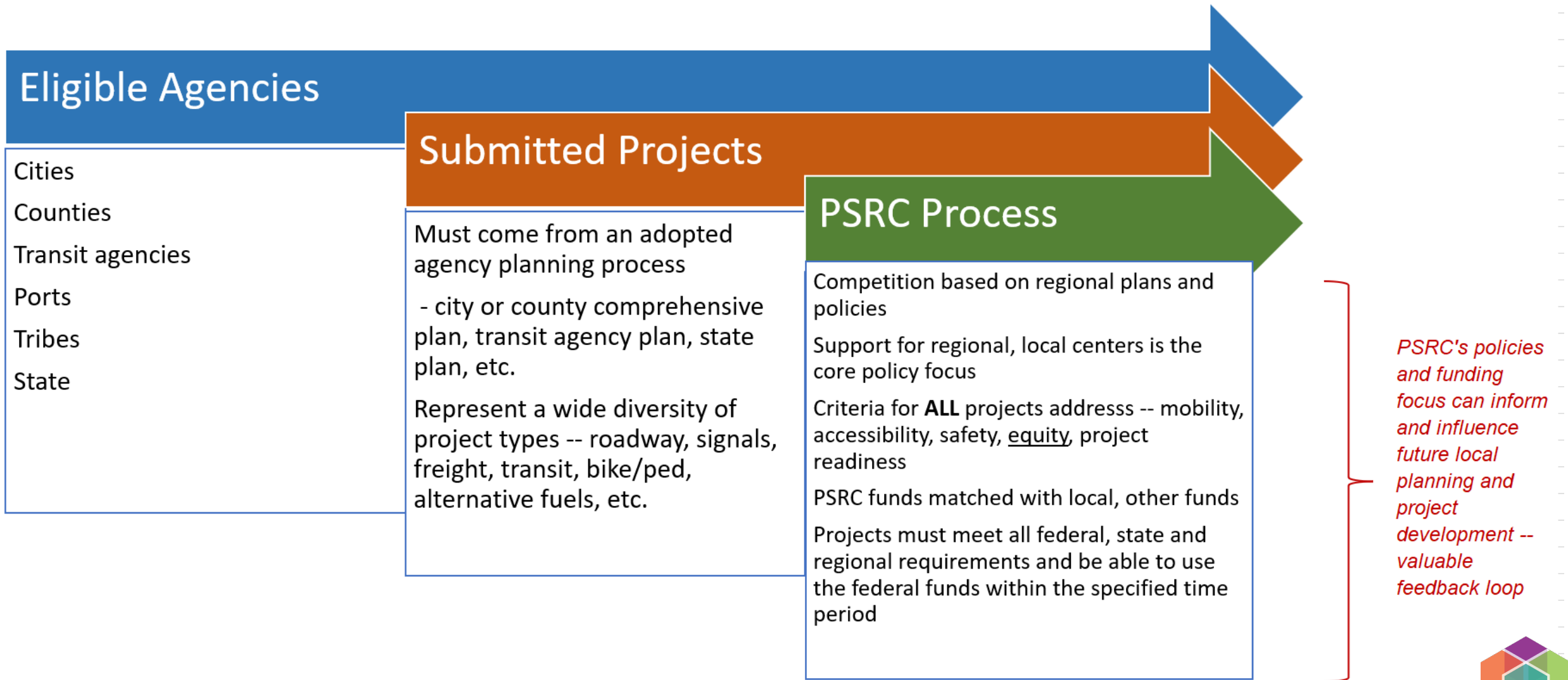
**Outcome** = potential recommendation for improvements to next funding process

- could address criteria, project types, process improvements, etc.



# Additional Background

## ATTACHMENT 2: PSRC FUNDING PROCESS





# Additional Background

## Attachment 3 – Transportation funding sources

- PSRC's federal funds – ~4%
- State managed or nationally managed federal funds - ~6%
- State funding - ~16%
- Local funds – ~74%



*and so on...*



# PSRC's Project Evaluation Criteria

*Policy Framework* and evaluation criteria based on *VISION 2050* policies, addressing:

- Support for regional and local centers
- Mobility, accessibility and circulation
- Active transportation
- Safety
- Equity
- Climate and air quality
- Project readiness





# PSRC's Project Evaluation Criteria

## *Policy Framework* and evaluation criteria:

- Support for regional and local centers
- Mobility, accessibility and circulation
- Active transportation
- Safety
- **Equity**
- Climate and air quality
- Project readiness

Equity  
significantly  
revised and  
elevated in 2022



# PSRC's Project Evaluation Criterion - Highlights

## Equity

*New:* Stand-alone criterion with increased point values

### *Expanded:*

- Additional focus groups: People with limited English proficiency, immigrants and refugees and transit dependent populations
- Disparities / gaps in the transportation system
- How community outreach will / has influenced project development
- Mitigation strategies in place for potential displacement

*Expanded* guidance and resources:



# PSRC's Project Evaluation Criterion - Equity



# PSRC's Project Evaluation Criterion - Equity

## Section 1 – Disparities / Gaps

- Identifying the population groups to be served by the project
  - people of color, people with low-income, older adults, people with disabilities, youth, people with Limited English Proficiency, populations located in highly impacted communities, areas experiencing high levels of unemployment or chronic underemployment, immigrants and refugees, and transit dependent populations
- Identifying the disparities or gaps for these population groups
- Describing how the project addresses those disparities or gaps

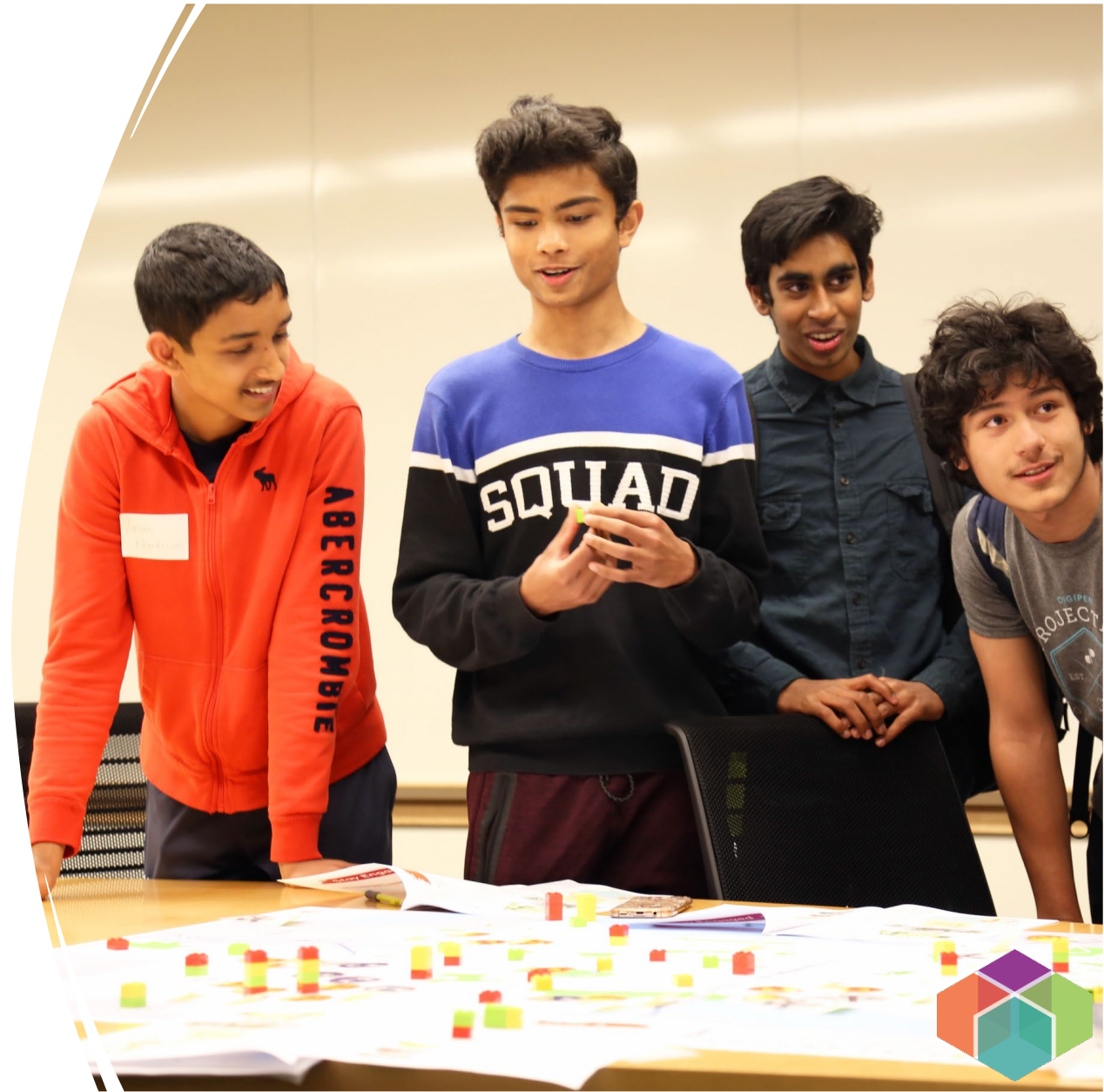




# PSRC's Project Evaluation Criterion - Equity

## Section 2 - Outreach

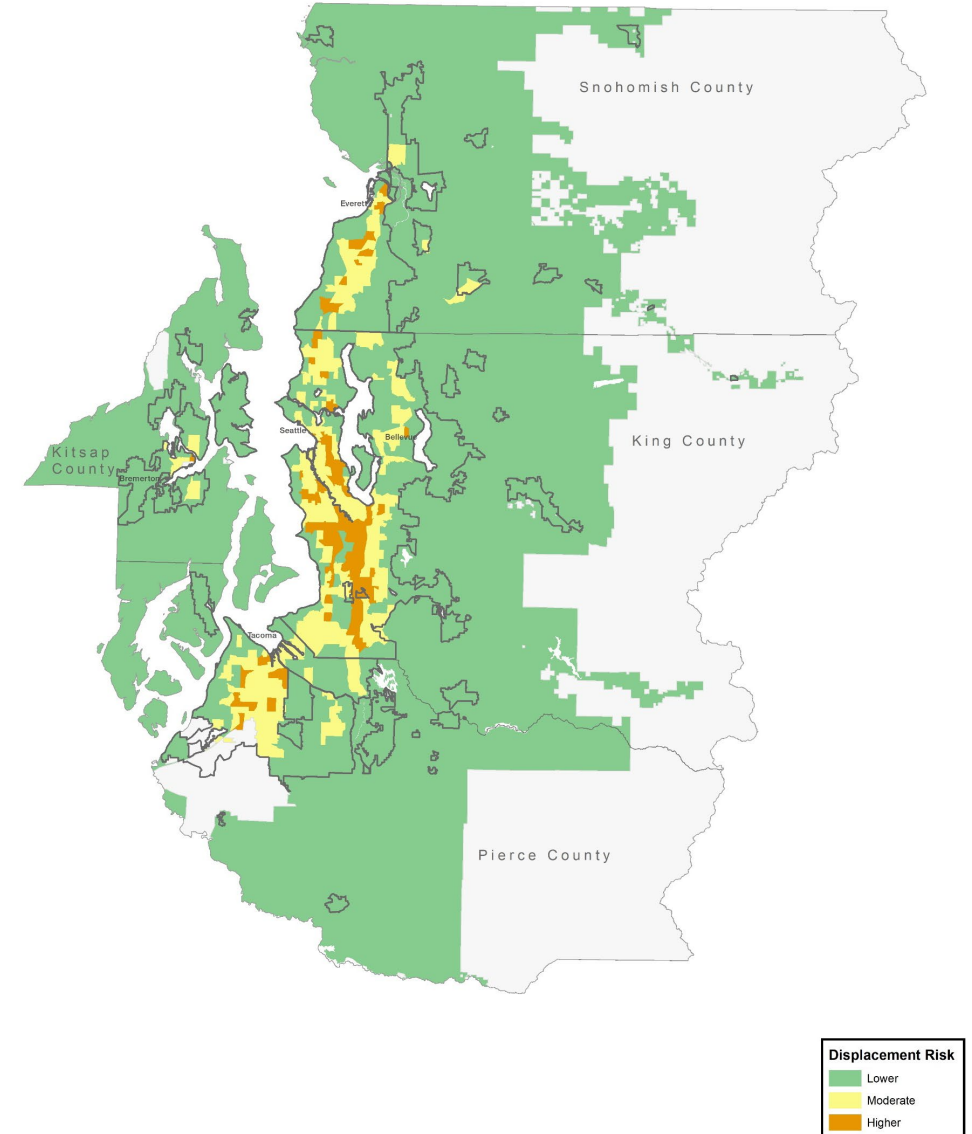
- How the development of the project is informed and influenced by public outreach and engagement



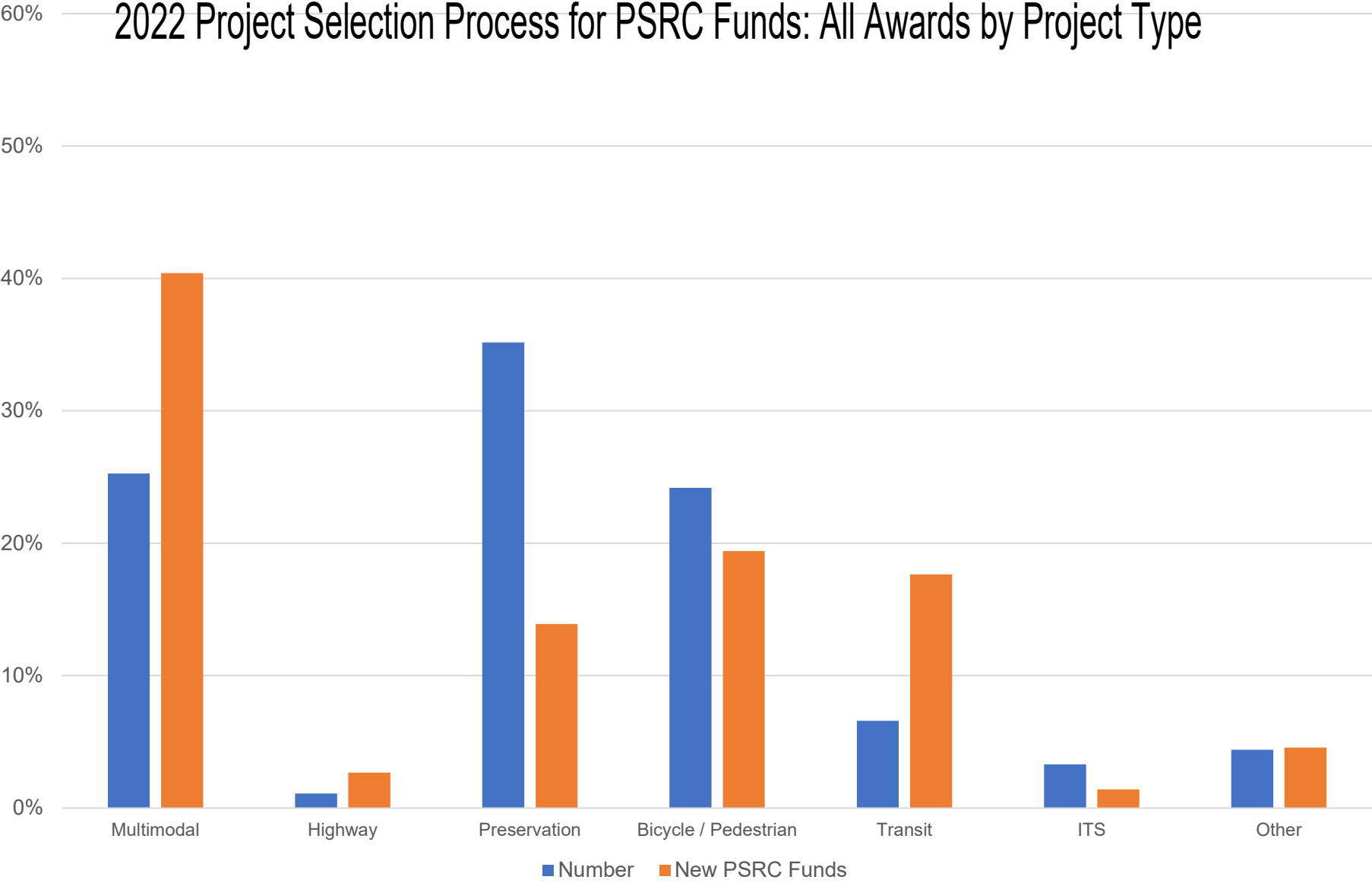
# PSRC's Project Evaluation Criterion - Equity

## Section 3 - Displacement

- The location of the project in relation to areas of displacement risk
- Agency mitigation strategies to address displacement risks



# Awarded Projects - Overview



# Awarded Projects - Examples

## Multimodal Project – City of Bothell

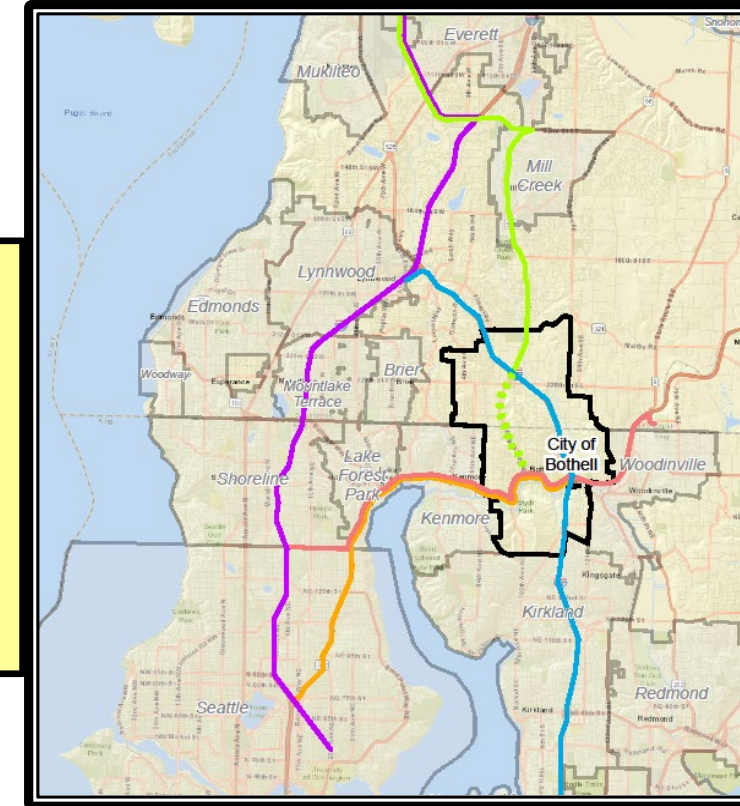
### Bothell Way NE Multimodal Improvements Phase 1

#### Existing Deficiencies



#### **BOTHELL WAY NE**

- **Principal Urban Arterial**
- **Connects Bothell's Canyon Park Regional Growth Center to multiple Regional Centers**



- **Corridor gap linking Canyon Park Regional Center**
- **2 directional lanes with intermittent center turn lane**
- **Insufficient capacity / “bottleneck”**
- **Narrow shoulders, and minimal street lighting**
- **Discontinuous or absent of sidewalks throughout**
- **No bike facilities**
- **No transit amenities**





# Awarded Projects - Examples

## Bothell Way NE Multimodal Improvements Phase 1

### Safety & Security

- Protected bike lanes
- Street/Pedestrian Lighting
- Intersection Improvements
- Continuous 2-way left turn lane

### Equity

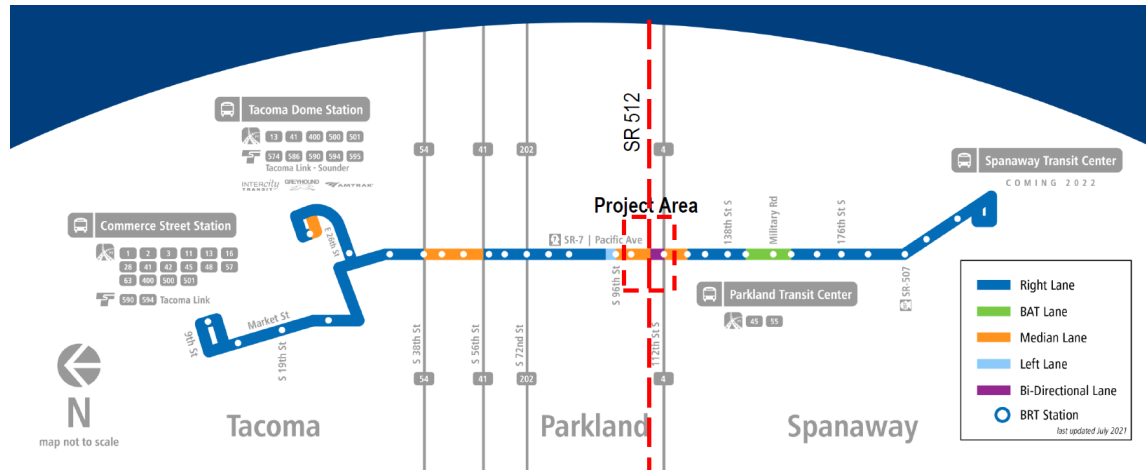
- Public outreach to target under represented populations
- Emphasize transit Connections , BRT facilities, UW Bothell Campus
- Completing sidewalk network
- Complete bicycle network





# Awarded Projects - Examples

## Transit Project – Pierce Transit Pacific Avenue / SR 7 Bus Rapid Transit



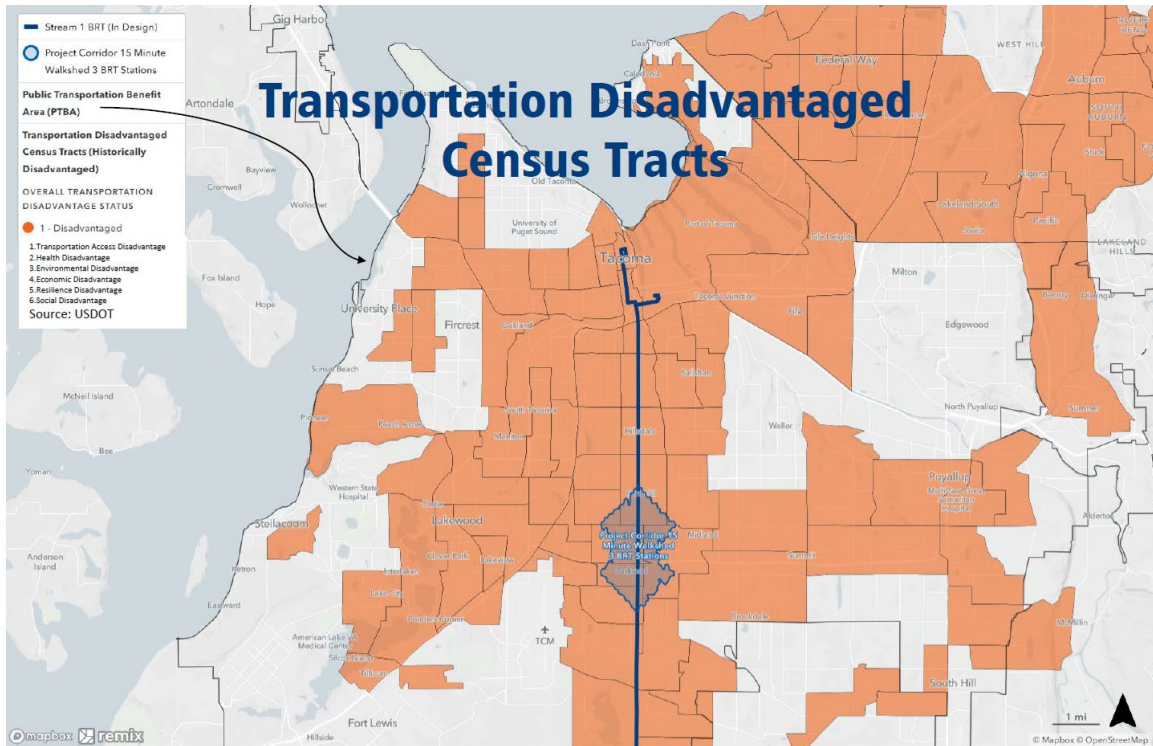
Will improve transit service along Pacific Avenue/State Route 7 between Downtown Tacoma and Spanaway

- ✓ Adds 7 signalized crosswalks for safer pedestrian crossings
- ✓ Enhances pedestrian safety with 22 refuge areas at median stations
- ✓ Creates 4 miles of restricted use lanes, which can be used by first responders in emergency situations, while preserving existing general purpose lanes
- ✓ Controls left turns at 21 intersections for improved traffic safety
- ✓ Installs 4 roundabouts for smoother traffic flow



# Awarded Projects - Examples

## Transit Project – Pierce Transit Pacific Avenue / SR 7 Bus Rapid Transit



**Poverty**



**Essential Jobs**



**Minority**



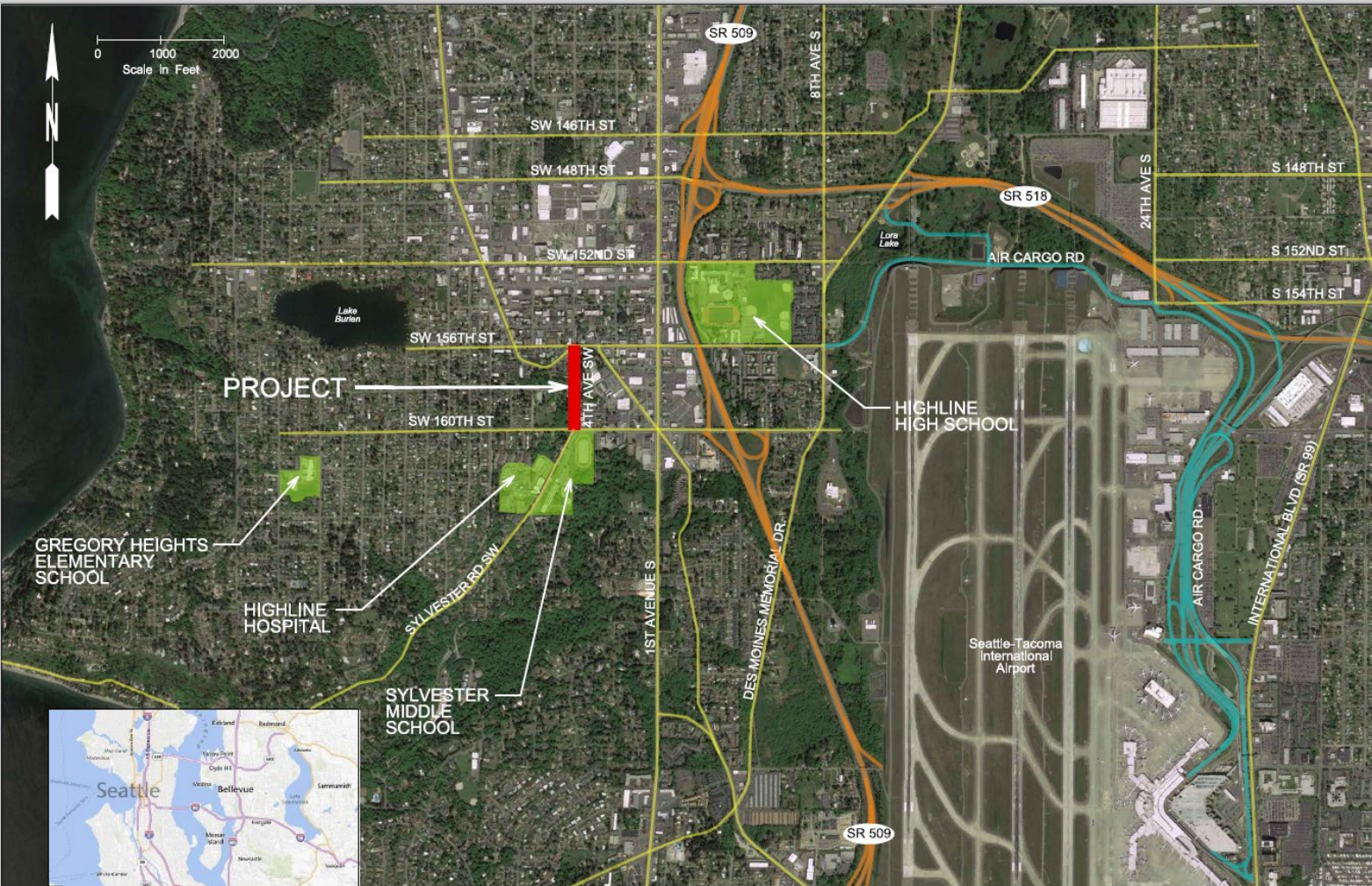


# Awarded Projects - Examples

## Bicycle / Pedestrian Project – City of Burien 4<sup>th</sup> Ave SW Multimodal Improvements Project

Project includes:

- curb, gutter & sidewalk
- 5-foot bicycle lanes
- lighting
- ADA ramp upgrade
- paving
- traffic signal modifications



4th Avenue SW Pedestrian Improvements  
SW 156th St to SW 160th St

Project Vicinity Map





# Awarded Projects - Examples

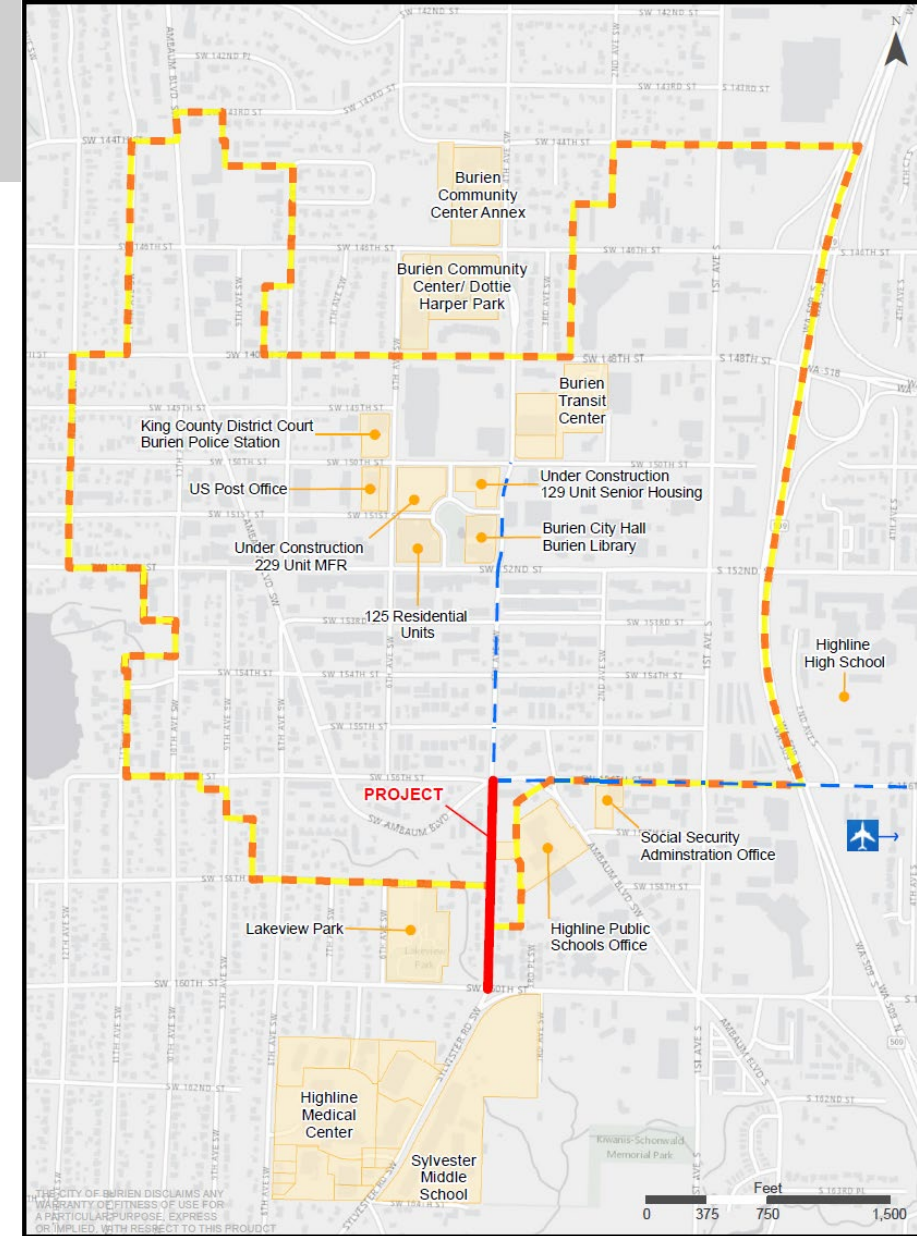
## Bicycle / Pedestrian Project – City of Burien 4<sup>th</sup> Ave SW Multimodal Improvements Project

Project area = higher percentages of people of color, people with low incomes, people with Limited English Proficiency, seniors, transit dependent populations

From the “Urban Center Vision Survey:”

### What would you change?

Improving conditions for biking and walking.



Regional Growth Center    Project Site    Rapid Ride F- Line Route





# Poll Questions





# Key Takeaways

- FRAME:
  - Specific federal funding sources with specific eligibilities
  - Projects must come from already adopted and approved plans
  - PSRC process provides feedback loop into future planning
- GOAL =
  - Improve equity in PSRC's project selection process
  - Evaluation criteria and outcomes



# Questions for the Equity Advisory Committee

- Are the equity criteria clear? Do they lead to an improved evaluation of transportation projects from an equity perspective?
  - Is anything missing?
- Do the projects that were ultimately awarded funding provide overall benefits?
  - Do the projects provide improvements to equitable outcomes?
  - Do you see any gaps or needs not reflected in the projects?





# Thank you

Kelly McGourty

Director of Transportation Planning

[kmcgourty@psrc.org](mailto:kmcgourty@psrc.org)

Charles Patton

Program Manager, Equity Policy & Initiatives

[cpatton@psrc.org](mailto:cpatton@psrc.org)



Puget Sound Regional Council