

2030 GHG Analysis and Climate Implementation Strategy

Regional Staff Committee | November 17, 2022



Puget Sound Regional Council

Overview of PSRC's Climate Change Work Program

Policy Framework

- VISION 2050
- Regional Transportation Plan
- Project Selection

Partnerships

- GHG Inventory
- Local Agency Guidance
- Alternative Fueled Vehicles
- Preparedness / Resilience

Analyses

- Environmental Impact Statement – VISION, RTP
- Four-Part Greenhouse Gas Strategy
- Project-Level Emissions



2030 GHG Analysis and Climate Implementation Strategy

Overview of Work Program

- Develop a 2030 transportation network and inputs to conduct a 2030 analysis aligned with adopted Four-Part GHG Strategy; and
- Continue to work with partner agencies including PSCAA on implementation strategy for achieving climate goals and monitor progress.

Deadline set for this work by December 31, 2022; work is already underway



2030 GHG Analysis and Climate Implementation Strategy



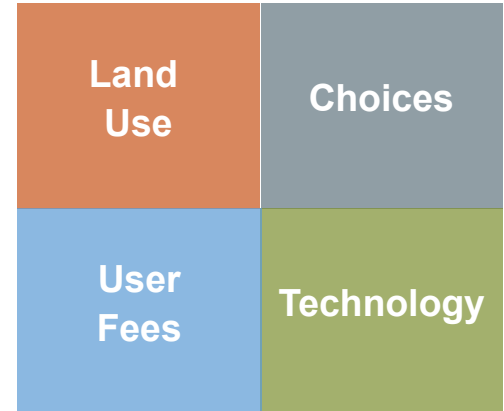
Deliverables:

- 2030 network and analysis
- Identification of gap to 2030 goal (on-road transportation only)
- Identification of strategies and implementation and monitoring plan towards meeting goal
- Consider in future project selection processes



Four-Part Greenhouse Gas Strategy

- **Land Use:** VISION 2050 regional growth strategy
- **Choices:** expanded and integrated regional transit network, active transportation and other multimodal investments
- **User Fees:** state facility tolls, transition to road usage charge in later years
- **Technology:** tremendous opportunity with recent and planned actions related to zero emission vehicles, Clean Fuels Standard, etc.



Regional Transportation Plan – 2050 Analysis

Steps to Meeting Regional Climate Goals

2022–2050
REGIONAL TRANSPORTATION PLAN



Reflecting:

- VISION 2050
- RTP investments
- Fuel economy improvements
- Transition to zero emission transportation system



Work Underway

- Transit agencies provided detailed 2030 networks in September
- Modeling and analysis of 2030 transportation network and emissions underway
- Plan is to present preliminary analysis results at December Executive Board and Transportation Policy Board meetings
- Sensitivity testing over next few months
 - To address gap to 2030 goal (on-road transportation only)
 - Various aspects / levers of the system and their potential impacts



Potential Sensitivity Tests

Choices

- Transit Service
 - Accelerated network expansion
 - Expanded service levels and enhanced frequencies
 - Improved access to stations
- Road network
 - Changes to roadway capacity projects
- Model various work from home scenarios



Potential Sensitivity Tests

User
Fees

- Model various Road Usage Charge rate scenarios

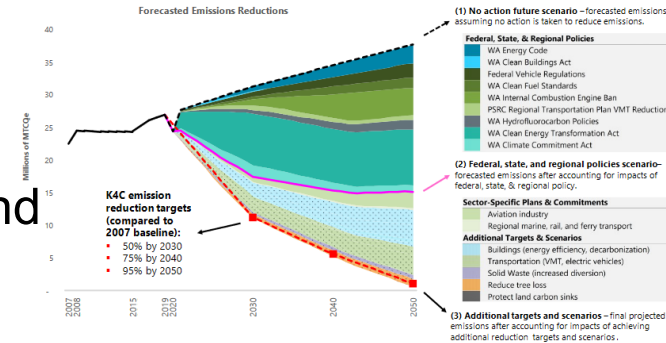
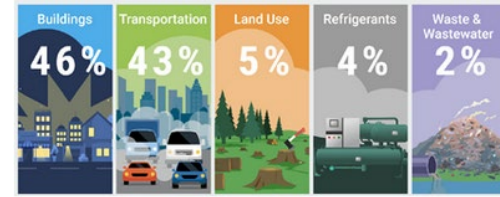
Technology

- Model various levels of EV implementation



Related Partnership Projects

- Puget Sound Regional Emissions Analysis Project
 - Draft greenhouse gas inventories for each county released
 - Includes forecast “wedge analyses”
 - Understanding the contribution of all sources and potential levers to reduce emissions
- Regional EV Collaborative - web-based clearinghouse out for beta review and testing
- Coordination with PSCAA on their updated Strategic Plan underway; anticipated adoption late 2022



Excerpts from the King County inventory report



Next Steps

- Staff work continues over next two months
- Preliminary results to board in December
- More comprehensive briefing of analysis results, gap to target, discussion of strategies and implementation plan in January 2023



Thank you



Puget Sound Regional Council

Kelly McGourty

Director of Transportation Planning

kmcgourty@psrc.org

206-971-3601

