



Equity Planning Resources for Comprehensive Plans

Passport to 2044 | November 8, 2022



Puget Sound Regional Council

Equity in VISION 2050

- Expanded focus in plan
- Actions and policies across all chapters
- Equity analysis included in environmental review
- Displacement risk mapping
- New GMA housing requirements



Planning & [In]equity

- A history of overtly discriminatory practices (exclusionary zoning, urban renewal, restrictive covenants)
- Perpetuated discrimination through more subtle and pervasive practices (excluding marginalized voices in decision-making, language that encodes bias and exclusion)
- Planning also provides tools to expand opportunities, mobility, housing, parks & open space



Image: State Historical Society of Missouri



Image: Museum of History & Industry, Seattle

Plan Evaluation Framework

WA Department of Commerce – Draft Racially Disparate Impacts Guidance

Understand your community: Identify measures to evaluate racially disparate impacts, exclusion and displacement and populations at risk

Analyze data: Examine data for racially disparate impacts, exclusion and displacement and identify areas of higher displacement risk

Evaluate policy: What policies contribute to disparate impacts, displacement or exclusion?

Revise policy: What new or improved policies are needed to undo impacts? Prevent displacement?

Review and revise regulations: What regulations and programs are needed to address and undo impacts?



Community engagement throughout



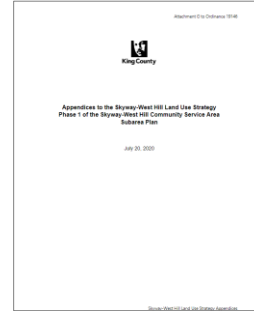
Plan-Level Analysis

Redmond Toolkit for Reviewing Comprehensive Plan Elements and Policies [\[LINK\]](#)

- Will this positively serve historically marginalized communities?
- Will this positively address the priorities of affected communities?
- Will this policy allow the project team to advance pro-equity opportunities?
- Will this reduce known disparities?
- Will this have a positive impact on addressing community priorities and concerns?
- Will this policy allow the implementation process to stay connected with communities?
- Will this policy allow project course corrections to be handled if unintended consequences are identified?



Seattle: Racial equity analysis Seattle 2035 and Urban Village Strategy [\[LINK\]](#)



King County Skyway-West Hill subarea plan equity impact review (Appendix C) [\[LINK\]](#)



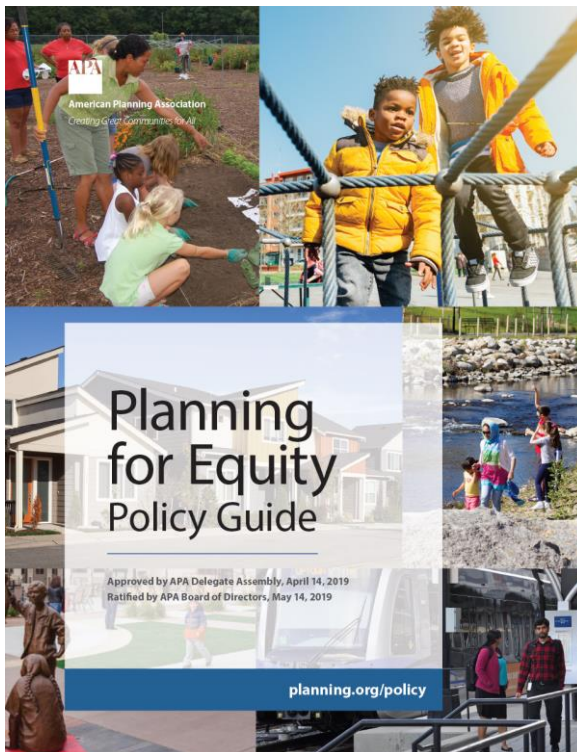
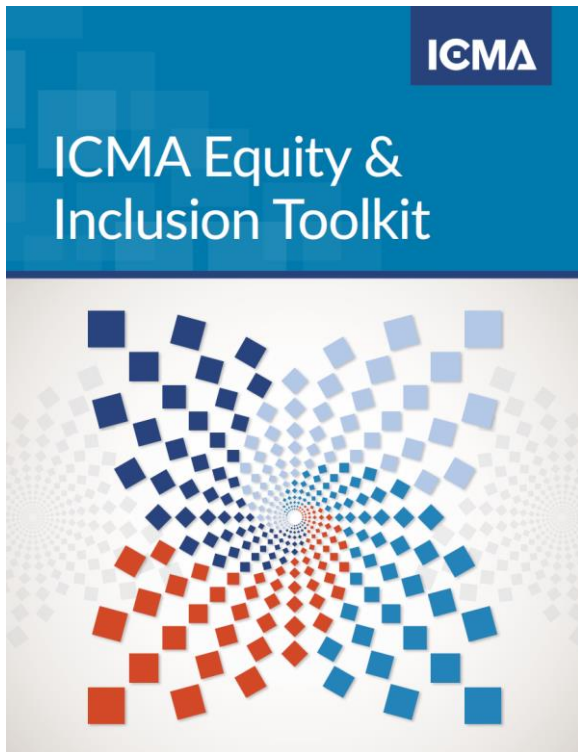
Policy-Level Analysis

WA Department of Commerce – Draft Racially Disparate Impacts Guidance

Criteria	Evaluation
The policy is valid and supports achieving the GMA goal for housing. There is a need for the policy and/or it addresses identified racially disparate impacts , displacement and exclusion in housing.	Supportive
The policy can help achieve the GMA goal for housing but may be insufficient or does not specifically address racially disparate impacts, displacement and exclusion in housing.	Approaching
The policy may challenge the jurisdiction’s ability to achieve the GMA goal for housing. The policy’s benefits and burdens should be reviewed to optimize the ability to meet the policy’s objectives while improving the equitable distribution of benefits and burdens imposed by the policy.	Challenging
The policy does not affect the jurisdiction’s ability to achieve GMA goal housing and has no influence or impact on racially disparate impacts, displacement or exclusion.	Not applicable



Planning for Equity Resources



All-In Cities an initiative of PolicyLink


Home / All-In Cities Policy Toolkit

All-In Cities Policy Toolkit


By putting equity at the center of municipal policies, American cities can help create a future of can participate and thrive. The All-In Cities Toolkit offers actionable strategies that advocates ar advance racial equity. Select a policy area below to view key strategies and policy tools. Each toc on important policy considerations, who can implement it, and examples of where it is working.

Recently added tools: [Apprenticeships](#), [Paid sick leave](#), [Paid family leave](#).


Policy areas



Good jobs



Economic security

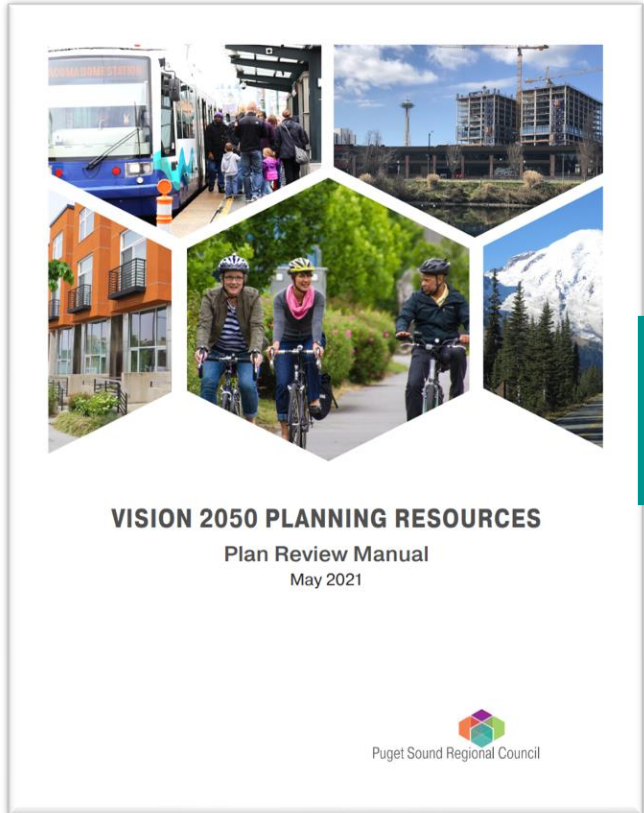


Homegrown talent

[VIEW ALL TOOLS](#)



PSRC Plan Review Manual



Regional Collaboration

The plan supports **collaboration for a healthy environment, thriving communities, and opportunities for all**, including coordination with other jurisdictions and agencies, tribes, ports, military installations, and adjacent regions.

Policies and programs should:

Support regional collaboration	Page/Policy Reference
✓ Include a statement about how the plan relates to countywide planning policies, VISION 2050, and planning requirements of the Growth Management Act	
⊖ Coordinate with other jurisdictions, agencies, tribes, ports, military installations, special purpose districts, and adjacent regions (RCW 36.70A.070(6)(a)(v), MPP-RC-1, RC-4-5)	
⊖ Prioritize services and access to opportunity for people of color, people with low incomes, and historically underserved communities to ensure all people can attain the resources and opportunities to improve quality of life and address past inequities (MPP-RC-2)	
⊖ Address land use, transportation, and housing opportunities and challenges related to military installations, when applicable (MPP-RC-6)	
✓ Prioritize investments in centers, including regional centers, countywide centers, high-capacity transit areas with a station area plan, and other local centers (MPP-RC-8-9)	
✓ Explore funding sources, changes to regulatory, pricing, taxing, and expenditure practices, and other fiscal tools to meet infrastructure and other needs (MPP-RC-10-11, RC-Action-7, RC-Action-9)	

Additional comments on Regional Collaboration or additional documents to share [optional]: _____



Equity Planning Resources by VISION Policy Area

Regional Collaboration

→ Prioritize access to opportunity to address past inequities

Environment, Climate Change

○ Access to a healthy environment

→ Prioritize reduction of impacts to vulnerable populations

Growth + Development Patterns

○ Access to opportunity

○ Inclusive engagement

→ Health disparities



Equity Planning Resources by VISION Policy Area

Housing

- Residential displacement
- Homeownership, with focus on historic inequities
- Racially-disparate impacts & exclusion

Economy

- Commercial displacement
- Barriers for economically disadvantaged communities

Transportation

- Mobility choices for all
- Racial and social equity as a core objective

Public Services

- Equitable access to services



Regional Collaboration

✓ Prioritize access to opportunity to address past inequities

Prioritizing equity can be implemented through many means, including emphasizing specific implementation actions or programs, budgetary decisions, and community engagement.

A racial equity impact tool can be an effective tool to evaluate equity in new policies and programs.

Planning Resources:

- Government Alliance for Race and Equity: [Racial Equity Toolkit](#)
- King County: [Equity Impact Review Tool](#)
- PSRC [Equitable Engagement for Comprehensive Plans](#).

Data Resources

- ▷ [Census Bureau](#)
- ▷ [PSRC Opportunity Mapping](#)
- ▷ [Policy Map](#)
- ▷ [Community Profiles](#)
- ▷ [PSRC Demographic Profile](#)



Regional Collaboration

Policy Example

CI G1 Provide opportunities for inclusive and equitable community involvement.

POLICIES CI 1.1 Promote racial and social justice, human and civil rights, and mutual respect to reduce intolerance, and reach out and bring people together in ways that build bridges between individuals and between groups.

[Seattle Comprehensive Plan](#)

Pol. EQU 1.1 The City should analyze social equity impacts in the development of strategic plans, policies, programs, and budgets. Structured questions and equity impact analyses will be used to ensure that equity is considered in decision-making processes.

[Burien Comprehensive Plan](#)

Why this works

- Emphasizes the importance of community engagement in decision-making
- Supports holistic efforts to promote racial and social justice

- Incorporates regular analysis of social equity impacts in decision-making, including equity impact review tools



Land Use and Housing – Residential Displacement

✓ Develop anti-displacement strategies when planning for residential growth

Displacement occurs when housing or neighborhood conditions force residents to move. Displacement can be physical, when building conditions deteriorate – or economic, as costs rise. Communities of color, low-income communities, and renter neighborhoods are at a higher risk of displacement.

Planning Resources:

- PSRC: [Increase Neighborhood Stability by Mitigating Residential Displacement](#)
- Commerce: [Housing Action Plan Guidance \(Ch. 5\)](#)
- [Local Housing Solutions](#)
- [Urban Displacement Project](#)

Data Resources

- ▷ [PSRC Displacement Risk Mapping](#)
- ▷ [Commerce Racially-Disparate Impacts Guidance](#)
- ▷ Focus groups and engagement



Land Use and Housing – Residential Displacement

Policy Example

Strategy 3.1.2 Create an equity and social justice toolkit that identifies potential strategies to minimize displacement of existing businesses and residents. The toolkit should identify specific measures that address minority-owned businesses and communities of color living within the Urban Center.

Strategy 3.2.1 Work with the South King Housing and Homelessness Partners (SKHPP) to address affordable housing and homelessness issues in the Urban Center.

[Burien Urban Center Plan](#)

Policy 3.9A Assist with identifying relocation options for mobile home park tenants forced to move due to mobile home park closure.

Policy 3.9B Ensure that sufficient relocation plans are in place prior to the closure of any mobile home park.

[SeaTac Comprehensive Plan](#)

Why this works

- Focuses on both residential and commercial displacement
- Identifies specific actions for the city

- Focuses on displacement strategies for mobile home parks, which are often particularly at-risk to development pressures



Climate and Environment

✓ Address impacts to vulnerable populations affected by climate change

The impacts of climate change (poor air quality, extreme temperatures, flooding, and more) significantly affect the health and safety of the region's residents. However, a history of inequality in land use decisions have placed low-income populations and people of color in geographies that are particularly vulnerable to these impacts.

Planning Resources:

- Environmental Protection Agency [Climate Change and Social Vulnerability in the United States](#)

Data Resources

- ▷ WA Department of Health [Environmental Health Disparities Map](#)
- ▷ PSRC [Puget Sound Hazards Map](#)



Climate and Environment

Policy Example

Public Health Policy 10.41 Identify disproportionate health impacts from climate change – especially for vulnerable populations such as minority, low-income, elderly, very young, and disabled populations. Develop strategies to address these impacts, such as strategies in the City’s Hazard Mitigation Plan to identify neighborhood cooling centers for the elderly and those without air conditioning.

Goal 10.9 Assist vulnerable populations who are disproportionately affected by the impacts of climate change.

[Everett Comprehensive Plan](#)

Policy EN– 1.27 Assess the risks and potential impacts on both City government operations and on the community due to climate change, with regard to social equity.

[Tacoma Comprehensive Plan](#)

Why this works

- Specifies vulnerable populations disproportionately suffering health impacts due to climate change
 - Identifies specific strategies and an opportunity to address these impacts in implementation (Hazard Mitigation Plan)
-
- Emphasizes social equity implications of climate risks



Development Patterns – Health Disparities

✓ Reduce health disparities and improve health outcomes

How residents live, work, and get around affects their physical, social, and mental well-being. Communities that are compact, with jobs, parks, services and amenities, and transit in walking distance, have better health and social well-being outcomes.

Planning Resources:

- Tacoma Pierce County Health Department: [Healthy Community Planning Toolbox](#)
- American Planning Association: [Planning and Community Health](#)
- WA American Planning Association: [Resource Guide for Healthy Community Planning](#)

Data Resources

- ▷ [Washington Tracking Network](#)
- ▷ [Community Profiles](#)
- ▷ Local Health Departments



Development Patterns – Health Disparities

Policy Example

OBJECTIVE 1.2 Promote the mental and physical health of all community members.

Policy LU-1.2.7 Continue to support projects that improve the quality of both the built and natural environments to support a thriving community and reduce disparate health and environmental impacts, especially to low-income and disadvantaged communities. Clean air, water and soil, and a healthy ecosystem are critical for human health.

[Kenmore Comprehensive Plan](#)

Seek to reduce health inequities and proactively address issues of equity, social and environmental justice when evaluating and implementing its land use policies, programs and practices.

[King County Comprehensive Plan](#)

Why this works

- Emphasizes reducing health disparities
 - Focuses on the role of the built and natural environment in health outcomes
-
- Focus on proactively addressing disparities through implementation



Transportation – Mobility for All

✓ Ensure mobility options for all people

An equity approach helps better understand how transportation services and investments impact different communities and to ensure planning meets the transportation needs of historically marginalized and underserved communities.

Planning Resources:

- USDOT: [Transportation Equity](#)
- Center for Neighborhood Technology: [Tools for Equitable Mobility](#)
- CUTR (Center for Urban Transportation Research): [Transportation Equity Needs Assessment & Project Prioritization](#)

Data Resources

- ▷ [PSRC Transportation Visualization Tool](#)
- ▷ [PSRC Data Portal](#) – Equity Population Layers
- ▷ [Regional Coordinated Mobility Plan](#)



Transportation – Mobility for All

Policy Example

3.8 Equity in Transportation Support the transportation needs of traditionally underserved neighborhoods and vulnerable populations, as listed under Goal 2, through investment in equitable modes of transportation and equal spending throughout the City, in addition to potential catch-up investment for areas in need as necessary.

[Tacoma Comprehensive Plan](#)

Policy T 10.6 Prioritize investment by considering life-cycle costs, safety, environmental benefits, reduction of greenhouse gas emissions, and public health benefits. Race and social equity should be a key factor in selecting transportation investments.

[Seattle Comprehensive Plan](#)

Why this works

- Acknowledges importance of modes in transportation equity
 - Creates opportunity to use additional funding in historically under-served areas (catch-up investment)
-
- Clearly states racial equity as a factor in transportation investment decisions.



Thank You



Liz Underwood-Bultmann, AICP
Principal Planner
LUnderwood-Bultmann@psrc.org

Erin Hogan
Associate Planner
EHogan@psrc.org