



# *Welcome!*

---

We will begin with some poll questions.



Puget Sound Regional Council



Washington State  
Department of  
**Commerce**



# Passport to 2044: Equity

*Incorporating Equity into Local Plans & Community Engagement*

November 8, 2022



Puget Sound Regional Council



Washington State  
Department of  
**Commerce**



## Passport to 2044 Series

- [Comprehensive Planning](#) – June 15
- [Climate](#) – August 17
- [Economic Development](#) – September 7
- [Transportation](#) – October 18
- [Housing \(1\)](#) – October 26
- [Equity \(1\)](#) – November 8
- [Tribal Coordination](#) – November 15
- [Critical Areas](#) – November 30
- [TOD and Centers](#) – December 13
- [Elected Officials and Planning Commissions](#) – tbd



# Program

- Welcoming Remarks and Introduction
- Equity in Local Comprehensive Plans
- Engaging Communities
- Q&A



# Logistics

---

- The recording for today's meeting and all presentations will be shared after the meeting
- Have a question? Ask in the "Q&A"
- Stick around at the end to complete our Title VI survey

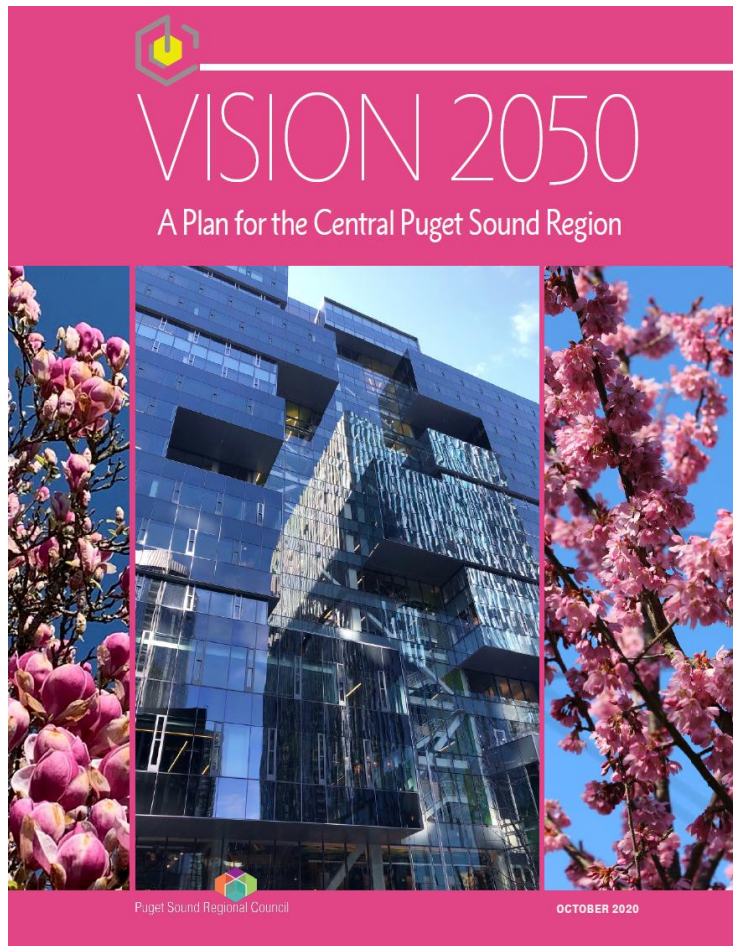











# PSRC and Local Comprehensive Plans



**Provide resources to help you create local plans** that advance regional goals around mobility, climate change, housing affordability, racial equity, and more!

# Key Policy Themes from VISION 2050



-  Increase **housing** choices and affordability
-  Provide **opportunities** for all
-  Sustain a strong **economy**
-  Significantly reduce greenhouse gas **emissions**
-  Keep the region **moving**
-  Restore the health of **Puget Sound**
-  Protect a network of **open space**
-  Growth in **centers** and near **transit**
-  Act **collaboratively** and support **local efforts**

# Plan Review Manual



## VISION 2050 PLANNING RESOURCES

Plan Review Manual

May 2021

*Updated September 2022\**

### Regional Collaboration

The plan supports **collaboration for a healthy environment, thriving communities, and opportunities for all**, including coordination with other jurisdictions and agencies, tribes, ports, military installations, and adjacent regions.

Policies and programs should:

Support regional collaboration	Page/Policy Reference
✓ Include a statement about how the plan relates to countywide planning policies, VISION 2050, and planning requirements of the Growth Management Act	
⊗ Coordinate with other jurisdictions, agencies, tribes, ports, military installations, special purpose districts, and adjacent regions (RCW 36.70A.070(6)(a)(v), MPP-RC-1, RC-4-5)	
⊗ Prioritize services and access to opportunity for people of color, people with low incomes, and historically underserved communities to ensure all people can attain the resources and opportunities to improve quality of life and address past inequities (MPP-RC-2)	
⊗ Address land use, transportation, and housing opportunities and challenges related to military installations, when applicable (MPP-RC-6)	
✓ Prioritize investments in centers, including regional centers, countywide centers, high-capacity transit areas with a station area plan, and other local centers (MPP-RC-8-9)	
✓ Explore funding sources, changes to regulatory, pricing, taxing, and expenditure practices, and other fiscal tools to meet infrastructure and other needs (MPP-RC-10-11, RC-Action-7, RC-Action-9)	

Additional comments on Regional Collaboration or additional documents to share [optional]: \_\_\_\_\_

Plan Review &  
Certification Webinar  
hosted on June 30, 2021

Available at

<https://www.psrc.org/our-work/plan-review>



# VISION 2050 Consistency Tools



## VISION Consistency Tool for Local Comprehensive Plans

Note: The tool shown here is for illustrative purposes. To fill out the tool, visit [www.psrc.org/our-work/plan-review](http://www.psrc.org/our-work/plan-review).

This tool is intended to help cities and counties integrate VISION 2050 into their local comprehensive plans. VISION 2050's multicounty planning policies serve as the adopted regional guidelines and principles required in state law to guide both regional and local planning. The tool also identifies transportation planning requirements of the Growth Management Act (GMA). The tool may be used at various times in the local planning process:

- Plan Update Scoping:** Use checklist items as guidance for scoping the extent of plan element updates. New or expanded issue areas in VISION 2050 are identified to support this process.
- Draft Plan Review:** Submit draft plans to PSRC prior to Planning Commission and Council review. Completing and submitting this tool and providing early drafts to PSRC help identify potential consistency issues early in the process.
- Certification Review:** Along with the adopted plan, the tool will assist in PSRC's review of the plan. Demonstrating inclusion of the necessary information in the checklist helps facilitate certification. *Note: The PSRC Executive Board is the final decision-making body for plan certification.*
- Regional Collaboration:** The tool provides cities and counties an opportunity to highlight supports sharing of best practices across the region and benefits jurisdictions as they

### Resources

- Regional Plans: [VISION 2050](#), [Regional Transportation Plan](#), and [Regional Economic Development Plan](#)
- [VISION 2040 to VISION 2050](#) – summary of what changed in VISION 2050
- [VISION 2050 Policy Matrix](#) – a comparison of multicounty planning policies and adopted local policies
- [Plan Review Manual webpage](#) – access more information about the review and certification process and other resources by policy area. See previous [certification reports](#) for areas that have been reviewed.

How to use the tools:

- Fill out tools using Formsite and submit with drafts and adopted plans

### Regional Collaboration

The plan supports **collaboration for a healthy environment, thriving communities, and opportunities for all**, including coordination with other jurisdictions and agencies, tribes, ports, military installations, and adjacent regions.


Policies and programs should:

Support regional collaboration	Page/Policy Reference
✓ Include a statement about how the plan relates to countywide planning policies, VISION 2050, and planning requirements of the Growth Management Act	
⊖ Coordinate with other jurisdictions, agencies, tribes, ports, military installations, special purpose districts, and adjacent regions (RCW 36.70A.070(6)(a)(v), MPP-RC-1, RC-4-5)	
⊖ Prioritize services and access to opportunity for people of color, people with low incomes, and historically underserved communities to ensure all people can attain the resources and opportunities to improve quality of life and address past inequities (MPP-RC-2)	
⊖ Address land use, transportation, and housing opportunities and challenges related to military installations, when applicable (MPP-RC-6)	
✓ Prioritize investments in centers, including regional centers, countywide centers, high-capacity transit areas with a station area plan, and other local centers (MPP-RC-8-9)	
✓ Explore funding sources, changes to regulatory, pricing, taxing, and expenditure practices, and other fiscal tools to meet infrastructure and other needs (MPP-RC-10-11, RC-Action-7, RC-Action-9)	

Additional comments on Regional Collaboration or additional documents to share [optional]: \_\_\_\_\_

Tools should be used throughout the planning process

Go-to resources for VISION 2050 and Plan Review process

Look for (!) or  in the tools

# VISION 2050 Resources



## Plan Review Manual

### VISION Consistency Tool for Local Comprehensive Plans

Note: The tool shown here is for illustrative purposes. To fill out the tool, visit [www.psrc.org/our-work/plan-review](http://www.psrc.org/our-work/plan-review).

This tool is intended to help cities and counties integrate VISION 2050 into their local comprehensive plans. VISION 2050's multicounty planning policies serve as the adopted regional guidelines and principles required in state law to guide both regional and local planning. The tool also identifies transportation planning requirements of the Growth Management Act (GMA). The tool may be used at various times in the local planning process:

- Plan Updates Scoping:** Use checklist items as guidance for scoping the extent of plan element updates. New or expanded issue areas in VISION 2050 are identified to support this process.
- Draft Plan Review:** Submit draft plans to PSRC prior to Planning Commission and Council review. Completing and submitting this tool and providing early drafts to PSRC help identify potential consistency issues early in the process.
- Certification Review:** Along with the adopted plan, the tool will assist in PSRC's review of the plan. Demonstrating inclusion of the necessary information in the checklist helps facilitate certification. Note: *The PSRC Executive Board is the final decision-making body for plan certification.*
- Regional Collaboration:** The tool provides cities and counties an opportunity to highlight innovative policies and programs. This supports sharing of best practices across the region and benefits jurisdictions as they apply for planning grants and awards.

**Resources**

- Regional Plans: VISION 2050, Regional Transportation Plan, and Regional Economic Strategy
- VISION 2040 to VISION 2050 – summary of what changed in VISION 2050
- VISION 2050 Policy Matrix – a comparison of multicounty planning policies and actions from VISION 2040 to VISION 2050
- Plan Review Manual webpage – access more information about the review and certification process and find PSRC guidance and other resources by policy area. See previous certification reports for areas for future work.

VISION 2050 PLANNING Plan Review Manual May 2021

VISION 2050 Consistency Tool for Comprehensive Plans 1

## Plan Review Handout

### Plan Review and Certification Program

**Implementing VISION 2050 Through Local Planning**

Long-range plans and policies are developed by the region's counties, cities, countywide planning groups, and transit agencies to help shape communities and plan for growth. PSRC reviews local plans for consistency with state law, VISION 2050, and the Regional Transportation Plan.

State law requires PSRC to review and certify countywide planning policies, local comprehensive plans, and Sound Transit's long-range plan. PSRC also certifies regional center plans and provides comments on local transit plans.

PSRC's plan review includes topics such as mobility, emissions, regional growth, housing, and intergovernmental coordination. Compared to the previous regional plan, VISION 2050 provides new and additional focus on several issues, including housing affordability, climate change, racial equity, coordination with Tribal Nations and other stakeholders, and planning for high-capacity transit.

**Types of Review**

- Countywide Planning Policies
- Local Comprehensive Plans
- Regional Center Plans
- Long-Range Transit Plans

**Why certification?**

- Regional Collaboration:** Challenges such as climate change, housing affordability, congestion, and racial disparities require regional coordination. PSRC's review and certification of local plans and policies supports local governments and public agencies in addressing regional issues.
- Requirements in State Law:** Certification ensures state requirements for transportation planning are being met.
- Transportation Funding:** Certification of local comprehensive plans is required by PSRC for jurisdictions to be eligible for PSRC's federal transportation funding.

## V2050 Policy Matrix & Updates Summary

**VISION 2050 Goals, Policies, and Actions Table** August/October 2020

The adopted goals, policies, and actions in VISION 2050 were used as a starting point for VISION 2050. The table compares specific revisions and rationale for changes to the multicounty planning policies in VISION 2050 and translates between the policy numbering in VISION 2040 and VISION 2050. The table is organized by policy section in the plan. Amendments made by the Growth Management Policy Board or the Executive Board in response to comments are noted in the "Type/Reason of Change" column. PSRC's General Assembly adopted VISION 2050 on October 29, 2020.

Goal	The region plans collaboratively for a healthy environment, thriving communities, and opportunities for all	New goal. Prior chapter (General Policies) did not include a goal statement
VISION 2050 #	Policy Number	Type/Reason of Change
MPP-RC-1	MPP-G-1	Coordination - change adds reference to adjacent regions; GAMPB amended in response to comment review
MPP-RC-2	n/a	Equity - new policy focuses on addressing racial equity; GAMPB amended in response to comment review
MPP-RC-3	n/a	Health - new policy focuses on improving health outcomes; GAMPB amended in response to comment review
MPP-RC-4	n/a	Transit - new policy emphasizes the need for coordination between local and regional agencies and transit
MPP-RC-5	n/a	Military - new policy emphasizes the need for coordination between local and regional agencies and the military
MPP-RC-6	n/a	GAMPB added in response to comment review
MPP-RC-7	MPP-DP-7, DP-10, T-12	Funding - change consolidates existing funding-related policies that address funding for both regional growth centers and manufacturing/industrial centers

## Compiled MPPs

### VISION 2050 Multicounty Planning Policies

VISION 2050's multicounty planning policies are adopted under the state's Growth Management Act. Multicounty planning policies address regionwide issues within a collaborative planning framework. Counties and cities look to multicounty planning policies to inform updates to countywide planning policies and local comprehensive plan updates. This document compiles the goals and multicounty planning policies for each chapter for quick reference. More about VISION 2050 is available at <https://www.psrc.org/vis2050>.

## VISION 2050 Booklet

Puget Sound Regional Council

## Recorded Webinar

VISION 2050

Plan Review & Certification Program

June 30, 2021

Puget Sound Regional Council

VISION 2050: Plan Review & Certification Program - June 30, 2021

# PSRC Guidance and Resources



## Available Now:

- [Conservation Toolkit](#)
- [Growth Target Guidance](#)
- [Economic Development Element Guide](#)
- [Tribal Coordination](#)
- [Community Data Profiles](#)
- [Equitable Engagement](#)
- [TOD + Centers Guidance](#)
- [Climate Change Guidance](#) (draft)

## Upcoming:

- Transportation Guidance
- Growth Outreach Toolkit
- Housing Guidance
- Equity Planning Resources
- Land Use Vision Forecast

### VISION 2050 Planning Resources

PSRC develops guidance, research, and data products to support local planning and advance VISION 2050. Browse resources below by policy topic area.



#### Regional Plans

- > [VISION 2050](#)
- > [Regional Transportation Plan](#)
- > [Regional Economic Strategy](#)

#### Guidance by Policy Topic Area (from PSRC and partner agencies)

<a href="#">Regional Collaboration and Equity</a>	>
<a href="#">Regional Growth Strategy</a>	>
<a href="#">Environment</a>	>
<a href="#">Climate Change</a>	>
<a href="#">Development Patterns: Centers and Transit-Focused Growth</a>	>

### [VISION 2050 Planning Resources](#)

### [Previous Certification Reports](#)

# Regional Equity Strategy

**November 8, 2022**

Passport to 2044



Puget Sound Regional Council

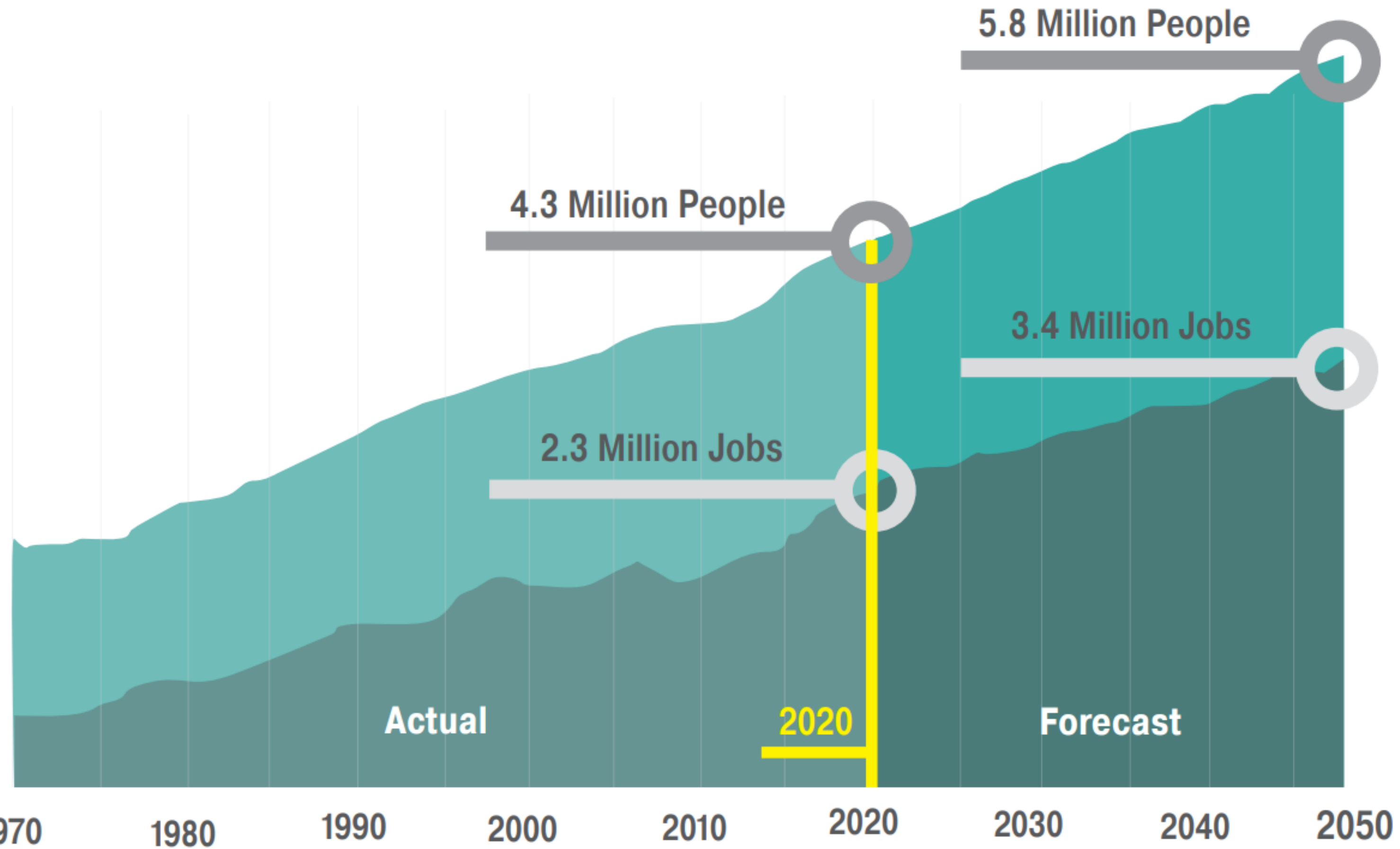


## The region's vision for equity...

All people have the means to attain the resources and opportunities that improve their quality of life and enable them to reach full potential. Differences in life outcomes cannot be predicted by race, class, or any other identity. Communities of color, historically marginalized communities, and those affected by poverty are engaged in decision-making processes, planning, and policy-making.



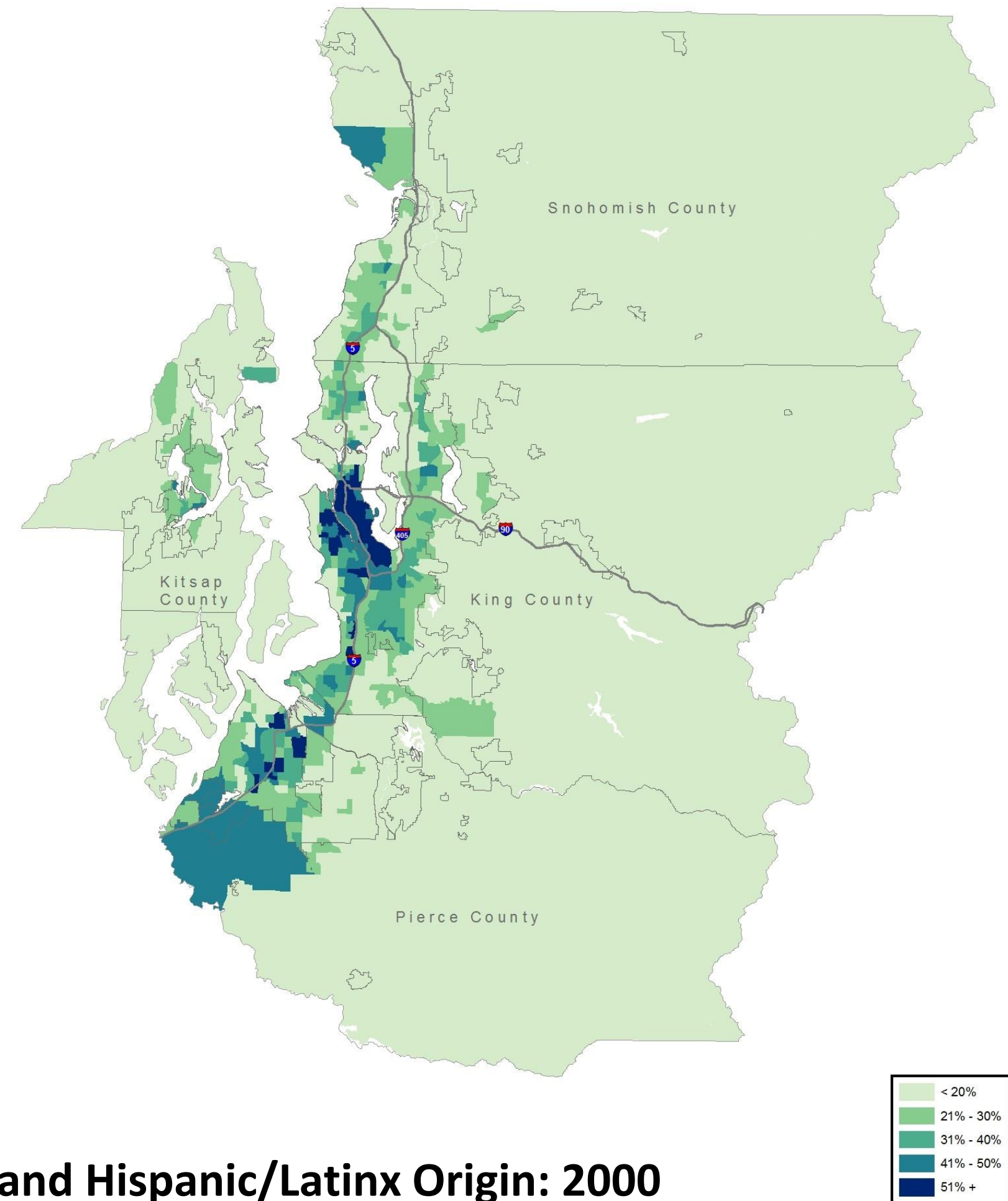
# We are a growing region



Source: PSRC

# Increasing Diversity

**People of color represent:**  
**24%** of region's population in 2000



**Population by Race and Hispanic/Latinx Origin: 2000**

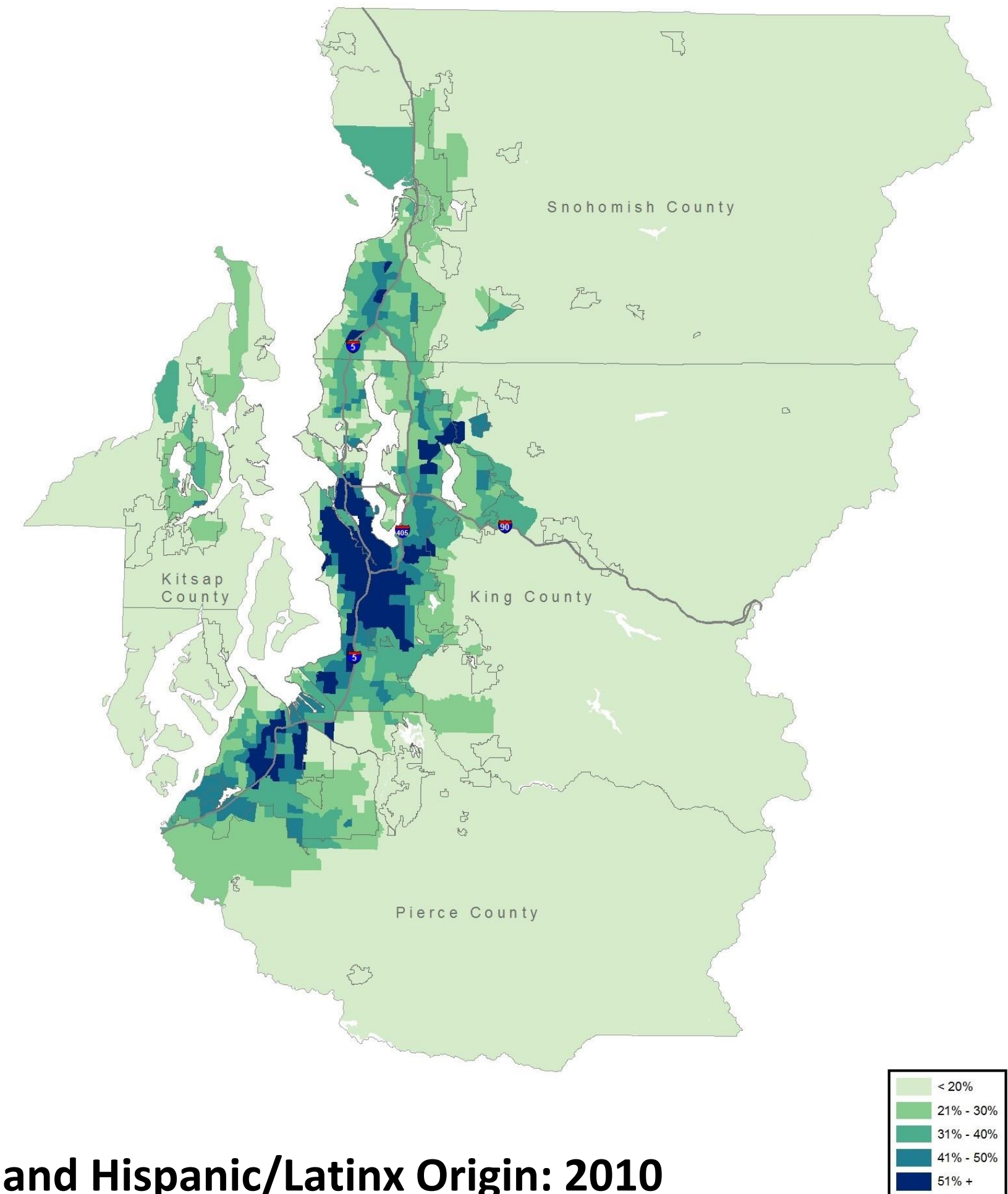
Source: American Community Survey, 1995-1999 5-Year Estimates

# Increasing Diversity

## People of color represent:

**24%** of region's population in 2000

**31%** of region's population in 2010



**Population by Race and Hispanic/Latinx Origin: 2010**

Source: American Community Survey, 2000-2009 5-Year Estimates



# Increasing Diversity

## People of color represent:

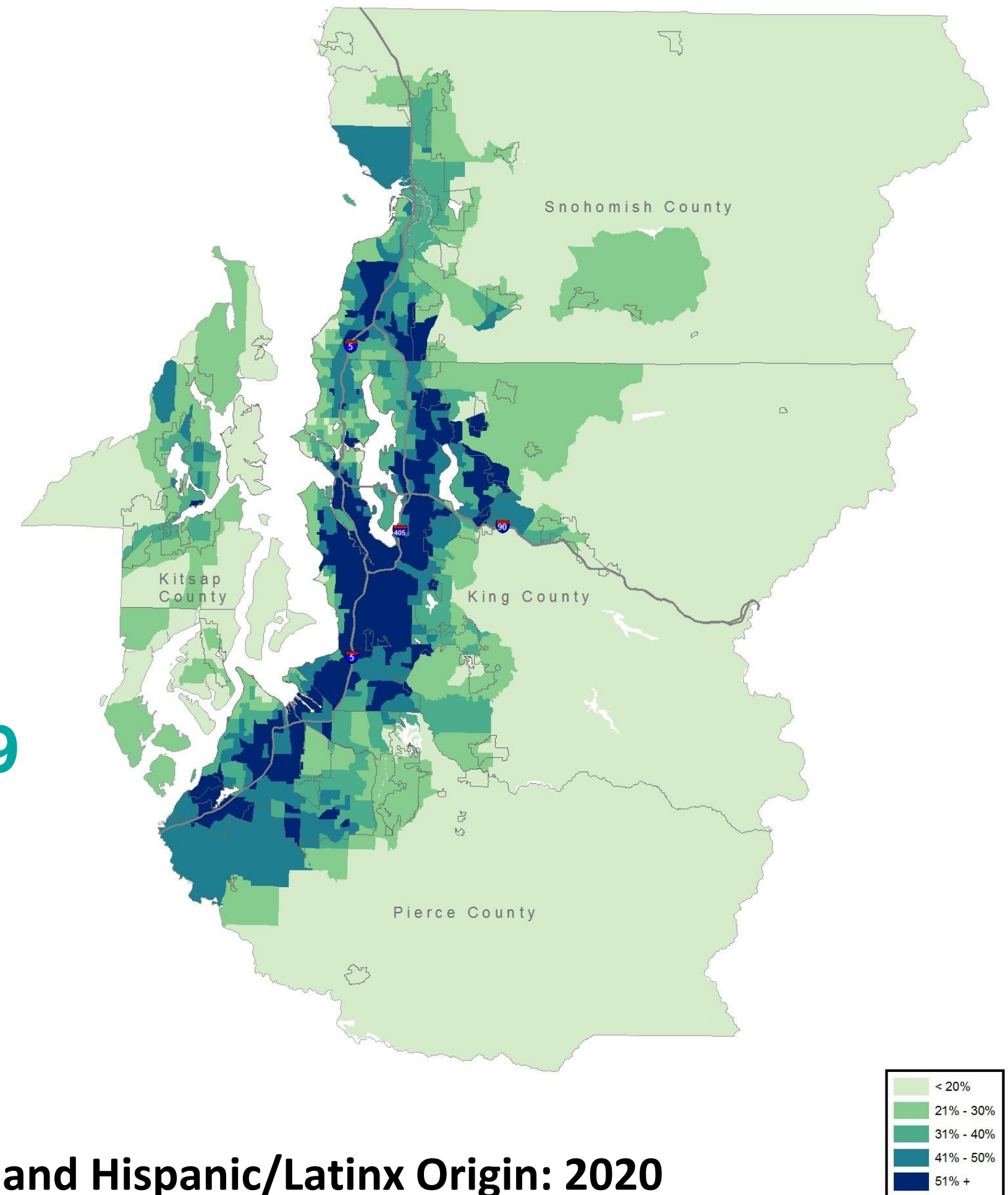
**24%** of region's population in 2000

**31%** of region's population in 2010

**41%** of region's population in 2021

**84%** of region's growth since 2000

**15 cities at 50%+ people of color in 2019**



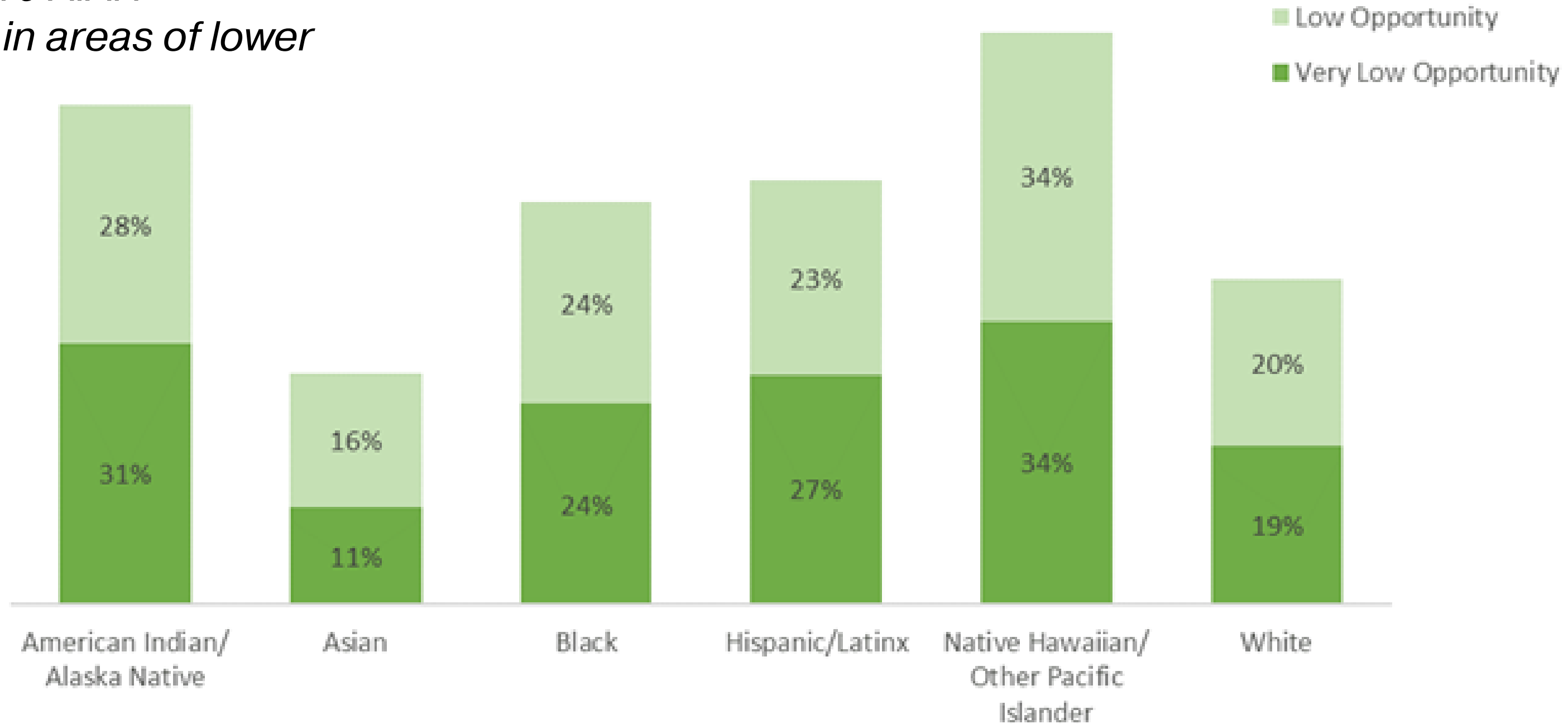
**Population by Race and Hispanic/Latinx Origin: 2020**

Source: American Community Survey, 2010-2019 5-Year Estimates

# Opportunity Mapping

Population in Areas of Lower Opportunity by Race and Ethnicity

*Almost 6 out of 10 AIAN households live in areas of lower opportunity*



# Members' Perspectives

Jurisdictions have begun to recognize need to address equity in plans and policies

- Need to go beyond standard practices to assess equity impacts
- Lack clear mandates
- Relatively little guidance, best practices, and tools
- Consequently, equity is often a secondary consideration



## TAKING STOCK 2016

Regional and Local Perspectives on Local Plan Updates and  
VISION 2040 Implementation

  
Puget Sound Regional Council

**Final Report**  
March 2017

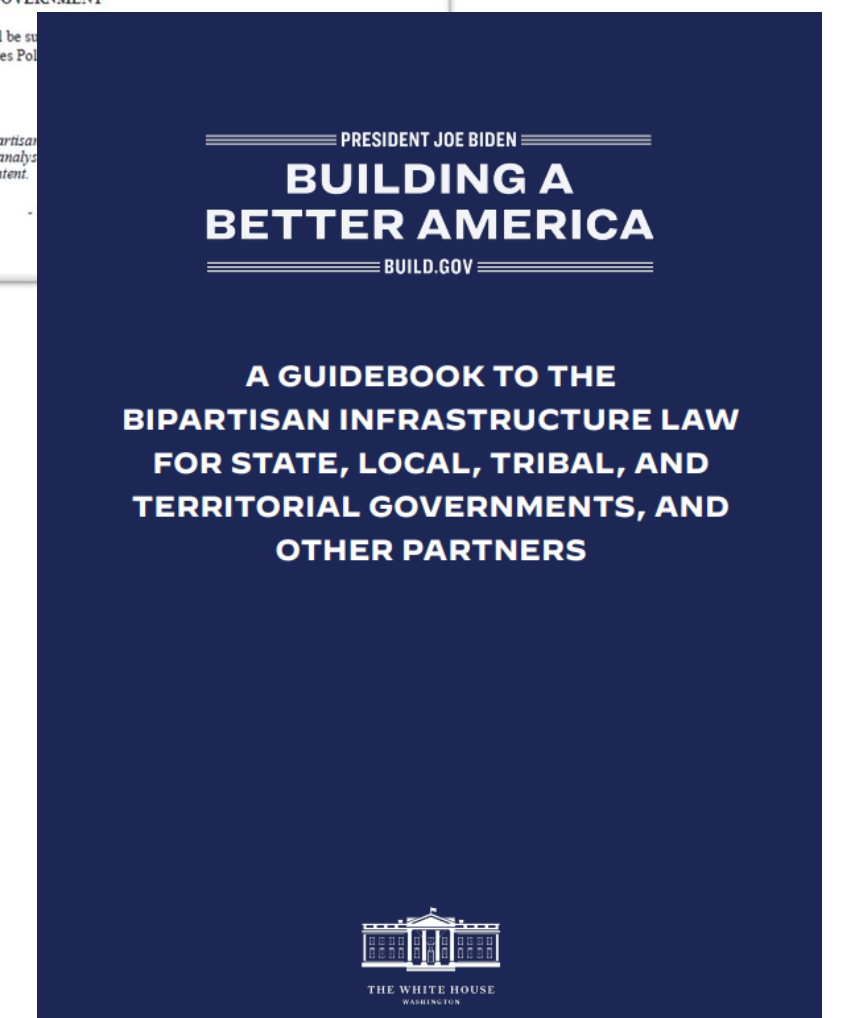
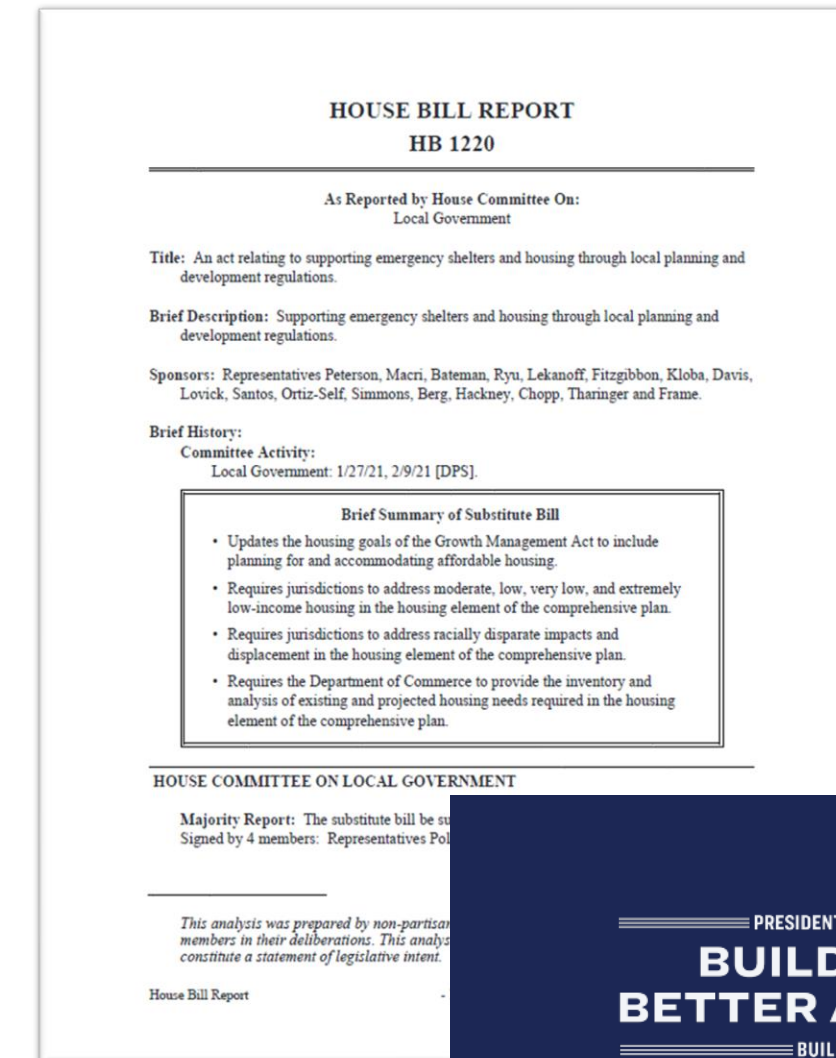
# HB 1220 & BIL

## House Bill 1220

- Requires cities and counties to plan for housing affordable to all income levels
- Identify, address, and undo racially disparate impacts, displacement, and exclusion in housing

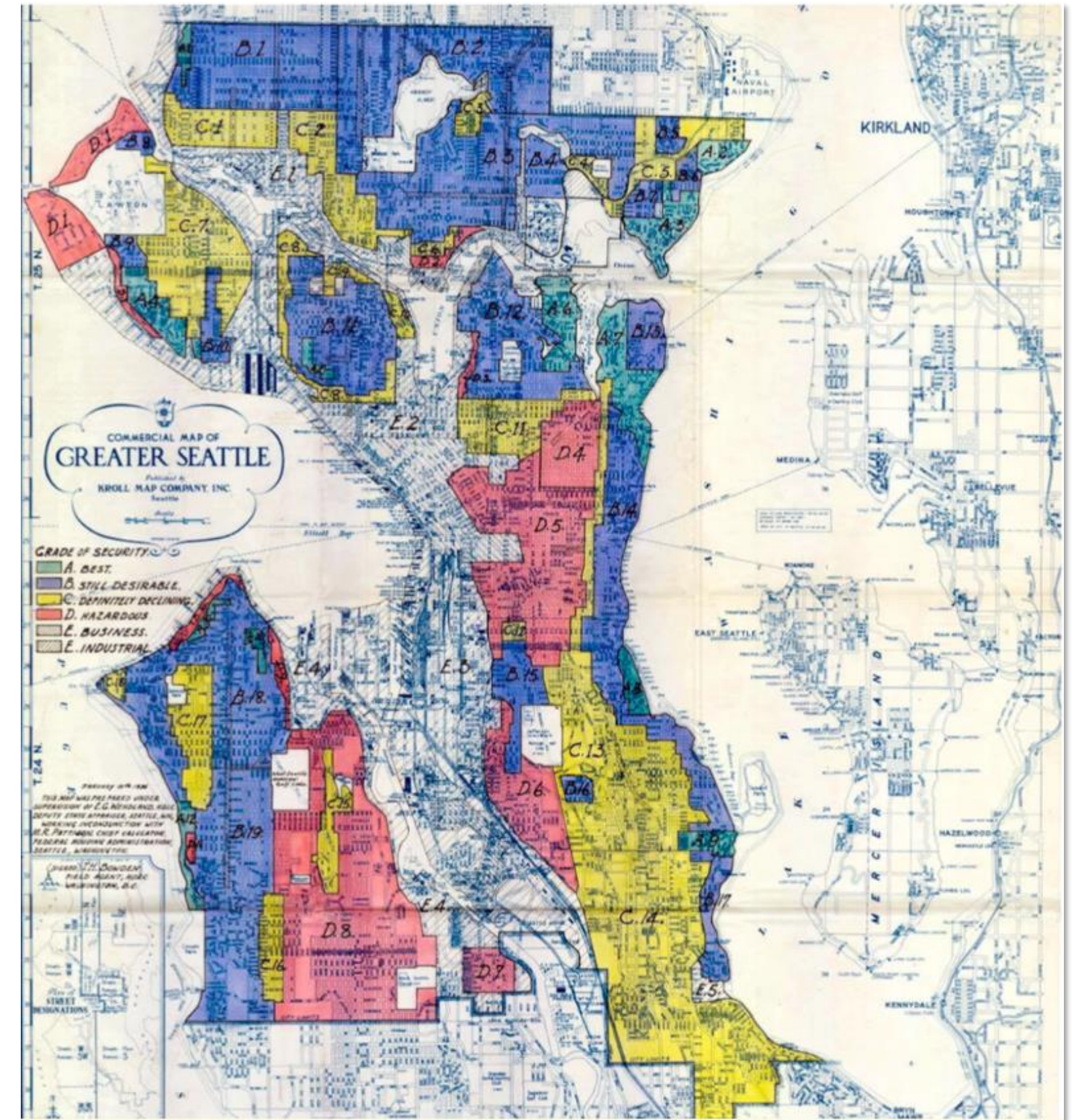
## Bipartisan Infrastructure Law (BIL)

- Providing more infrastructure funding than ever before and many new transportation programs
- Expanding access, undoing past harms (e.g., disproportionate pollution, disconnected communities)



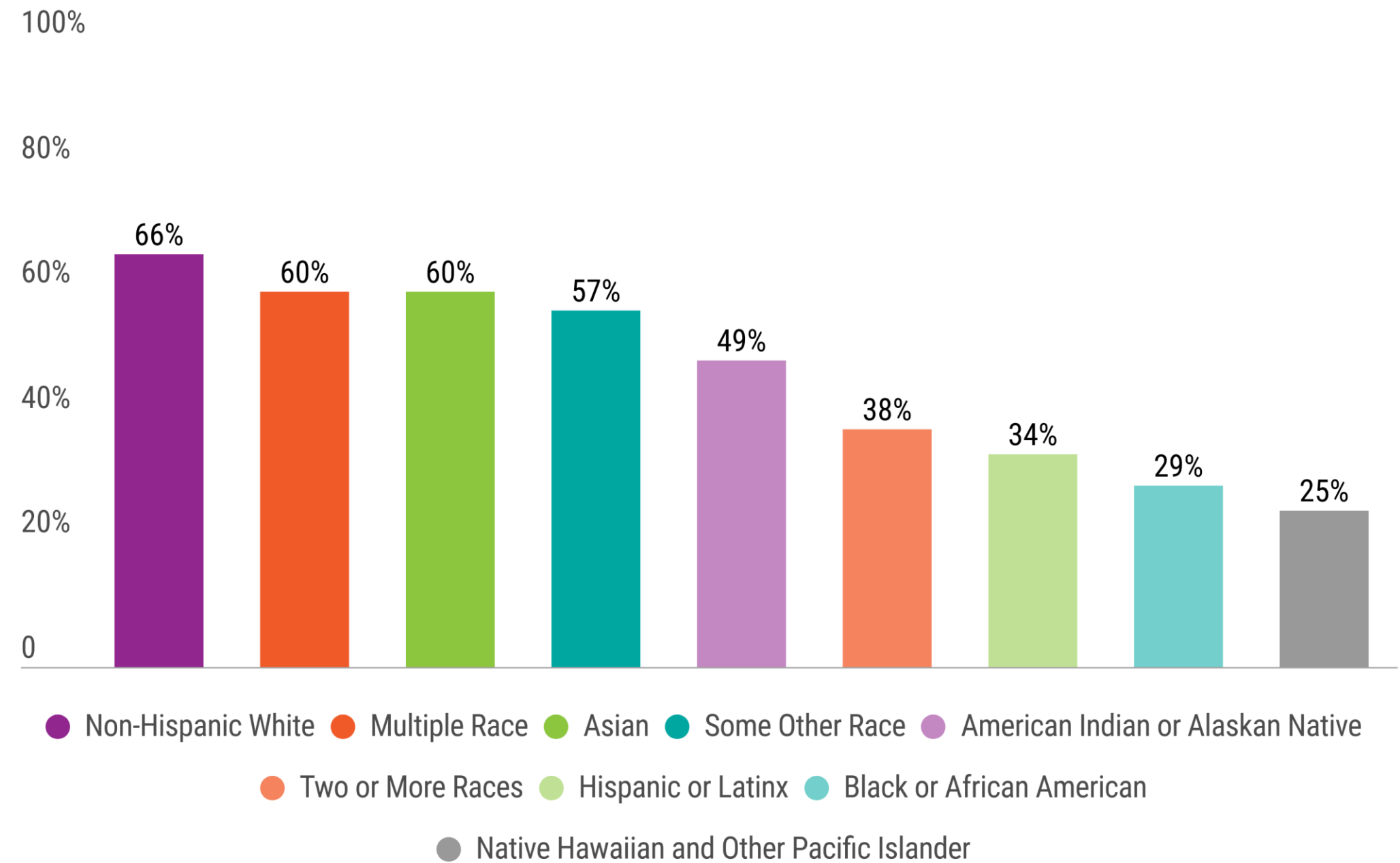
# Why Lead with Race?

- Attempts to be race-neutral only led to continued barriers for communities of color
- Planning and policies have played a role in creating and perpetuating these barriers
  - *Donation Land Claims Act*
  - *Redlining*
  - *Restrictive Covenants*
  - *Urban Renewal*
  - *Single-Family Zoning*



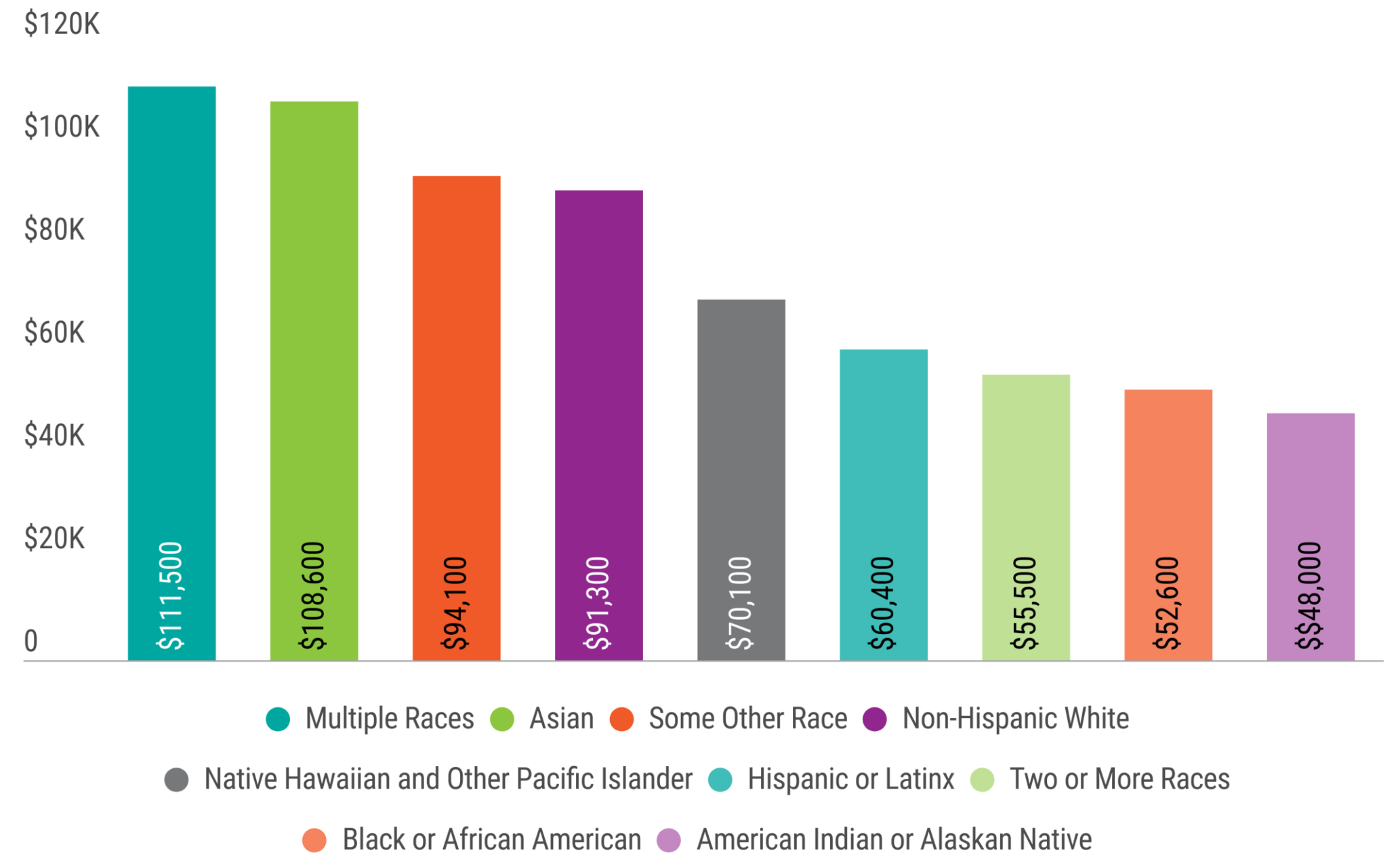
# Home Ownership Rates

2 out of 3 of **white** residents own a home (**66%**), while only 1 out of 4 **Native Hawaiian / Pacific Islanders** own a home (**25%**)



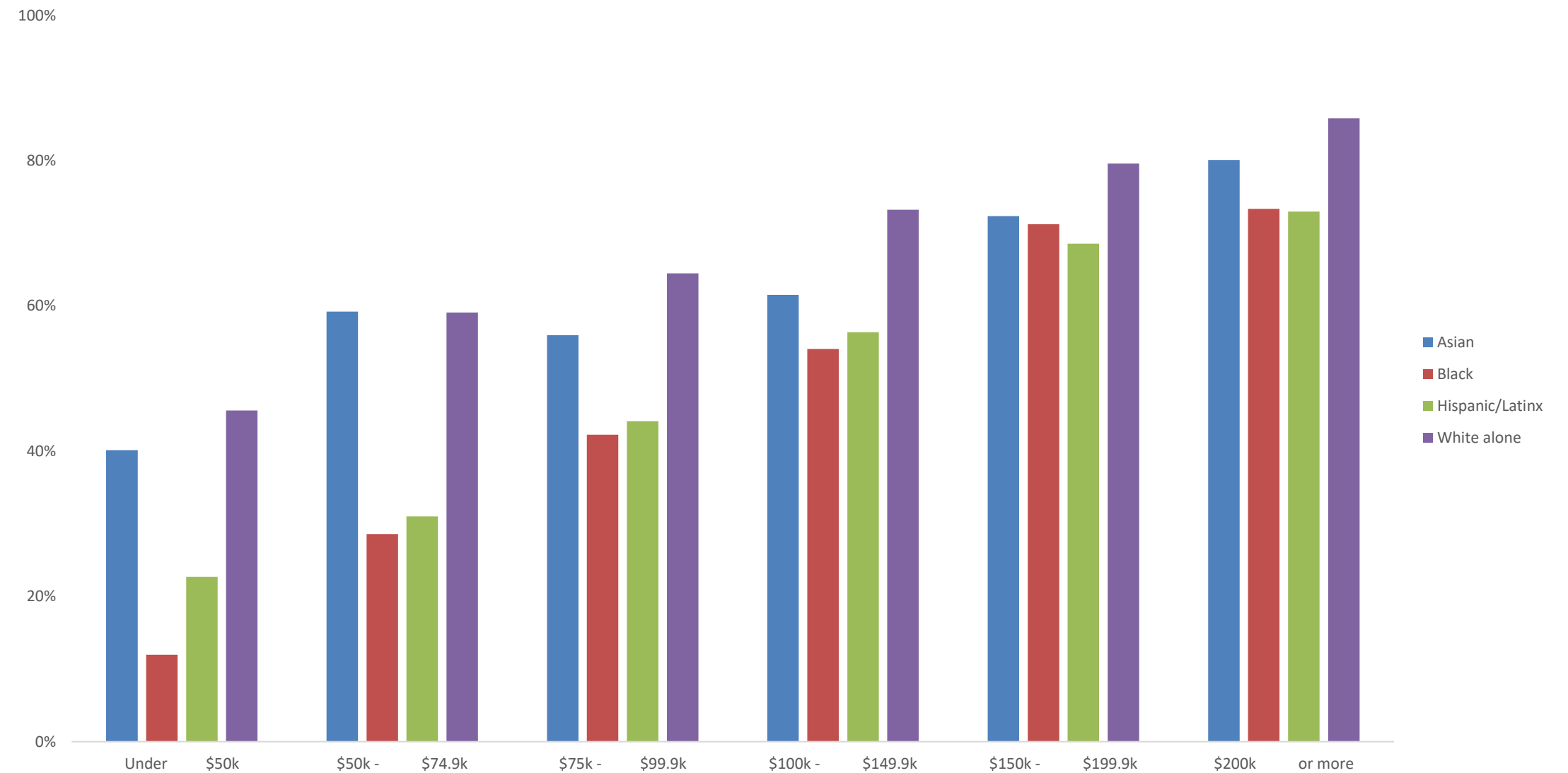
# Median Income

White residents (\$91,300) earn almost double what American Indian / Alaska Native residents earn (\$48,000)



# Homeownership Rates by Income and Race/Ethnicity

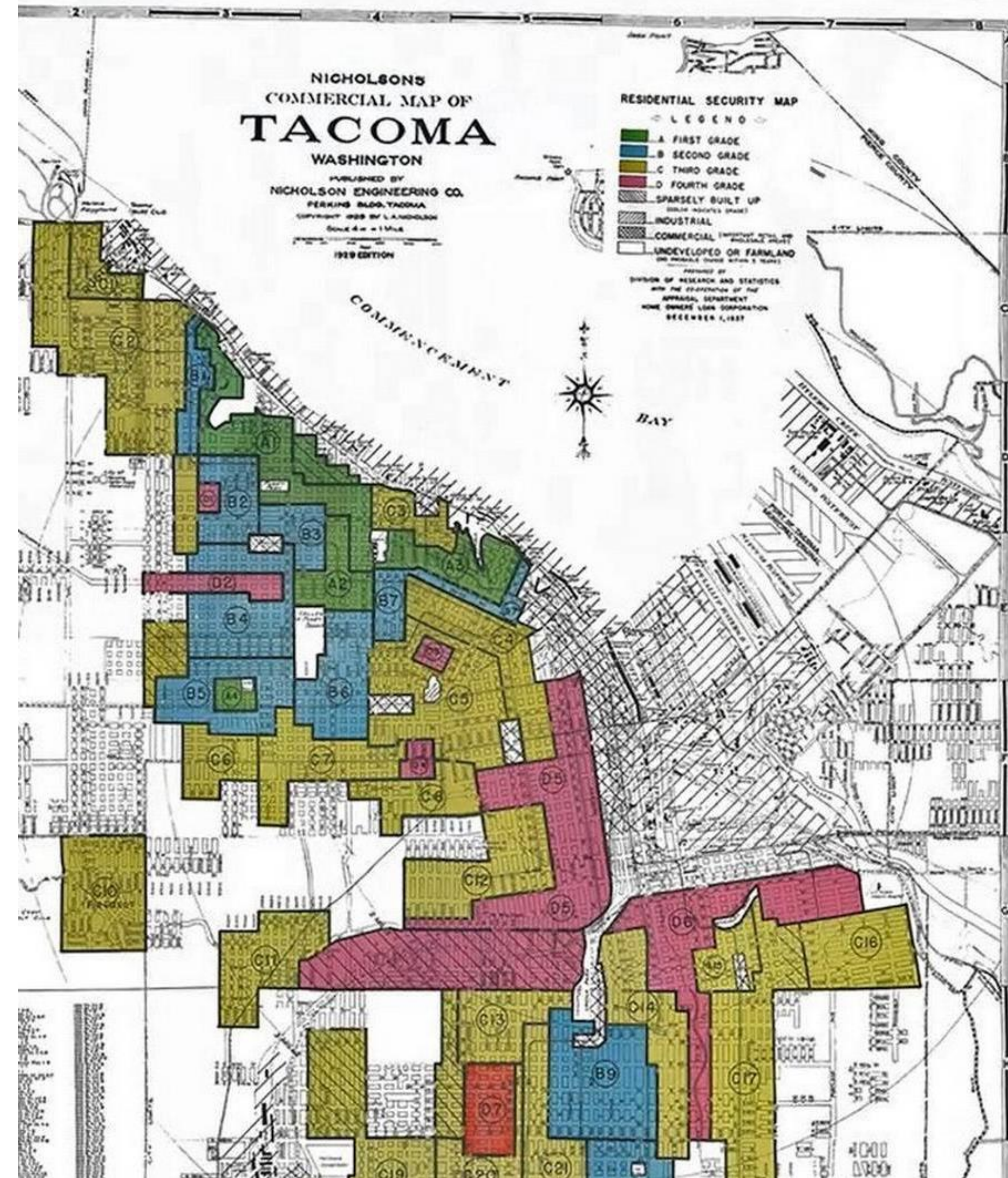
Homeownership rates for people of color are much lower than rates for white households, even after controlling for household income





# Why Lead with Race?

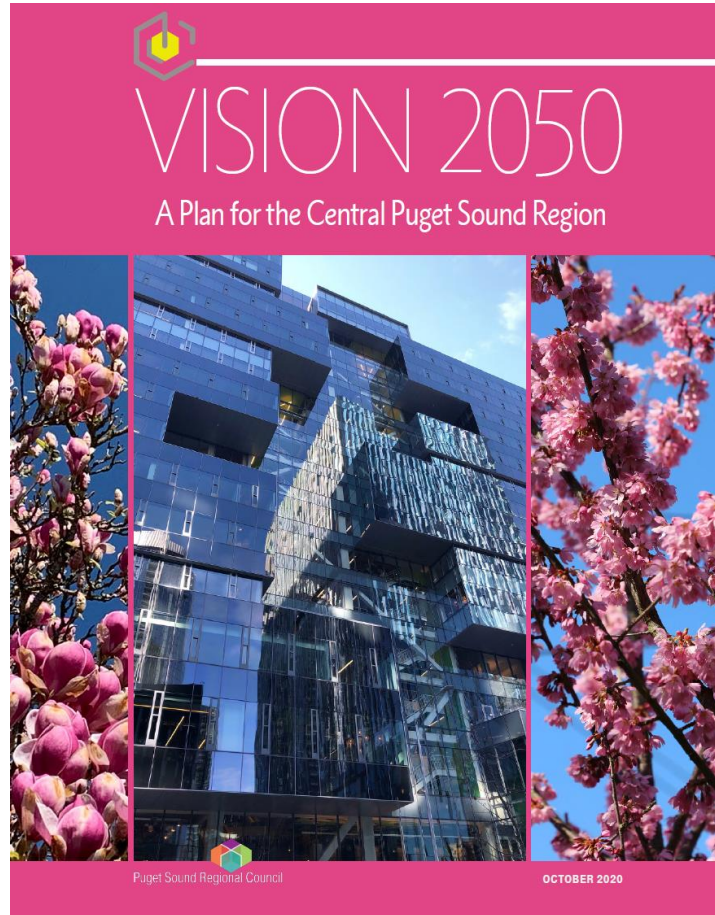
- Focusing on racial inequities provides framework, tools, and resources for other marginalized groups
- Create a region where everyone is thriving and we can no longer predict life outcomes based on race or other demographics



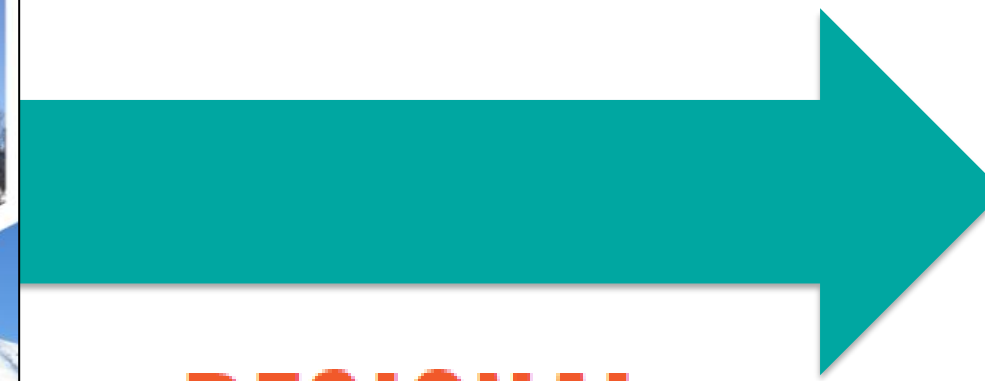
# Regional Equity Strategy



# Equity and the Plan Update Process



## VISION 2050 PLANNING RESOURCES Plan Review Manual May 2021



# REGIONAL EQUITY STRATEGY

## 2012 King County Countywide Planning Policies

With amendments ratified by June 25, 2016



## City of Edmonds Comprehensive Plan



Adopted July 28, 2015  
Updated December 15, 2017

### Regional Collaboration

The plan supports **collaboration for a healthy environment, thriving communities, and opportunities for all**, including coordination with other jurisdictions and agencies, tribes, ports, military installations, and adjacent regions.

Policies and programs should:

Support regional collaboration	Page/Policy Reference
✓ Include a statement about how the plan relates to countywide planning policies, VISION 2050, and planning requirements of the Growth Management Act	
✗ Coordinate with other jurisdictions, agencies, tribes, ports, military installations, special purpose districts, and adjacent regions (RCW 36.70A.070(6)(a)(v), MPP-RC-1, RC-4-5)	
✗ Prioritize services and access to opportunity for people of color, people with low incomes, and historically underserved communities to ensure all people can attain the resources and opportunities to improve quality of life and address past inequities (MPP-RC-2)	
✗ Address land use, transportation, and housing opportunities and challenges related to military installations, when applicable (MPP-RC-6)	
✓ Prioritize investments in centers, including regional centers, countywide centers, high-capacity transit areas with a station area plan, and other local centers (MPP-RC-8-9)	
✓ Explore funding sources, changes to regulatory, pricing, taxing, and expenditure practices, and other fiscal tools to meet infrastructure and other needs (MPP-RC-10-11, RC-Action-7, RC-Action-9)	

Additional comments on Regional Collaboration or additional documents to share [optional]: \_\_\_\_\_

# Regional Equity Strategy

The Strategy includes a suite of resources co-created with the Equity Advisory Committee. It will provide guidance to help members and staff work towards the region's equity goals.



## Capacity Building

- ▶ Learning Opportunities
- ▶ Prioritizing Equity
- ▶ Inclusive Procurement
- ▶ Hiring and Retention



## Data and Research

- ▶ Equity Tracker Data
- ▶ Data and Analysis
- ▶ Legacy of Structural Racism Interactive Report



## Community Engagement

- ▶ Equity Advisory Committee
- ▶ Anti-Displacement Organizations Report
- ▶ Equitable Engagement Guidance



## Best Practices

- ▶ Racial Equity Impact Assessment
- ▶ Equity Planning Resources

# Regional Equity Strategy

The Strategy includes a suite of resources co-created with the Equity Advisory Committee. It will provide guidance to help members and staff work towards the region's equity goals.



## Capacity Building

- ▶ Learning Opportunities
- ▶ Prioritizing Equity
- ▶ Inclusive Procurement
- ▶ Hiring and Retention



## Data and Research

- ▶ Equity Tracker Data
- ▶ Data and Analysis
- ▶ Legacy of Structural Racism Interactive Report



## Community Engagement

- ▶ Equity Advisory Committee
- ▶ Anti-Displacement Organizations Report
- ▶ Equitable Engagement Guidance



## Best Practices

- ▶ Racial Equity Impact Assessment
- ▶ Equity Planning Resources



## Data and Research



## Equity Tracker (Upcoming Spring 2023)

Public facing dashboard that quantifies equity related policies in VISION 2050 to track, explain, and share solutions for disparities.



## Data and Analysis

Conduct research on racial equity and provide data support for other REAP teams.



## Legacy of Structural Racism Interactive Report (Upcoming Spring 2023)

Historical overview of structural racism in the Puget Sound region and how this history informs existing disparities.

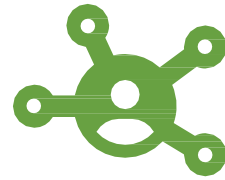


## Community Engagement



## Equity Advisory Committee (Launched Fall 2021)

Co-create products with staff and the Executive Board, as well as advise PSRC committees and boards on policies and programs with an equity lens.



## Anti-Displacement Organizations Report (Upcoming Spring 2023)

Develop a directory to connect member agencies and interested parties to organizations that are developing locally appropriate and community-driven solutions for displacement. Explore potential opportunities to support these efforts.



## Equitable Engagement Guidance (Available Now)

An equitable engagement guidebook that empowers member agencies and PSRC staff to develop and implement engagement plans for marginalized communities.



## Best Practices



## Racial Equity Impact Assessment (Upcoming Spring 2023)

Help cities and counties assess the impact of planning initiatives and implementation efforts on different populations.



## Equity Planning Resources (Upcoming Fall 2022)

A resource for cities and counties to address racial disparities in housing, transportation, and other policies and planning.



# Equity Resources

## ■ Available Now

- Demographic Profile
- Displacement Risk Mapping
- Equitable Engagement for Comprehensive Plans
- Fair Housing Equity Assessment
- Housing Element Guide
- Housing Innovations Program (HIP)
- Opportunity Mapping
- Racial Residential Segregation

## Equity

[Home](#) > [Our Work](#)

As a regional planning agency, PSRC makes decisions that shape transportation, land use, and the built environment. **VISION 2050** includes policies and actions related to equity that support the dismantling of systems of inequality. PSRC is currently in the process of developing a **Regional Equity Strategy**, and has created several resources and tools to help jurisdictions implement the policies and actions in VISION.



[Regional Equity Strategy](#)



[Demographic Profile](#)



[VISION 2050 Equity Policies and Actions](#)

### Resources

- [Demographic Profile](#) (PDF)
- [Displacement Risk Mapping](#)

<https://www.psrc.org/our-work/equity>

<https://www.psrc.org/our-work/housing>



# Thank you!

Charles Patton, PhD  
Program Manager, Equity Policy and Initiatives  
[Cpatton@psrc.org](mailto:Cpatton@psrc.org)





# *Thank you for joining us today!*

---

If you have any questions please reach out to  
[PlanReview@psrc.org](mailto:PlanReview@psrc.org)

A short attendee survey will be provided at the end of the webinar, to meet PSRC's Title VI requirements.

You are not required to disclose the information requested in order to participate in this meeting. PSRC will handle the information gathered as confidentially as possible.

For further information regarding this process please contact the Title VI Coordinator at [nbgrennan@psrc.org](mailto:nbgrennan@psrc.org)

