

# 2030 GHG Analysis and Climate Implementation Strategy

Executive Board | October 27, 2022



Puget Sound Regional Council

# Today's Briefing



- Overview of 2030 GHG Analysis and Climate Implementation Strategy work program and current timeline
- Executive Board feedback on range of sensitivity tests to be modeled



# 2030 GHG Analysis and Climate Implementation Strategy

## Overview of Work Program

- Develop a 2030 transportation network and inputs to conduct a 2030 analysis aligned with adopted Four-Part GHG Strategy; and
- Continue to work with partner agencies including PSCAA on implementation strategy for achieving climate goals and monitor progress.

Deadline set for this work by December 31, 2022; work is already underway



# 2030 GHG Analysis and Climate Implementation Strategy



## Deliverables:

- 2030 network and analysis
- Identification of gap to 2030 goal (on-road transportation only)
- Identification of strategies and implementation and monitoring plan towards meeting goal
- Consider in future project selection processes



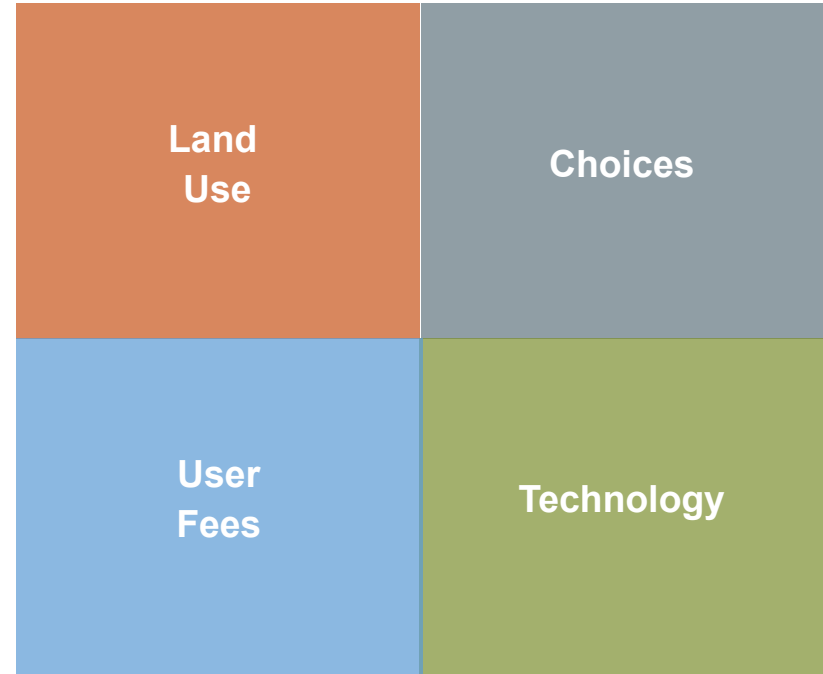
# Four-Park Greenhouse Gas Strategy

**Land Use:** VISION 2050 regional growth strategy

**Choices:** Expanded and integrated regional transit network, active transportation and other multimodal investments

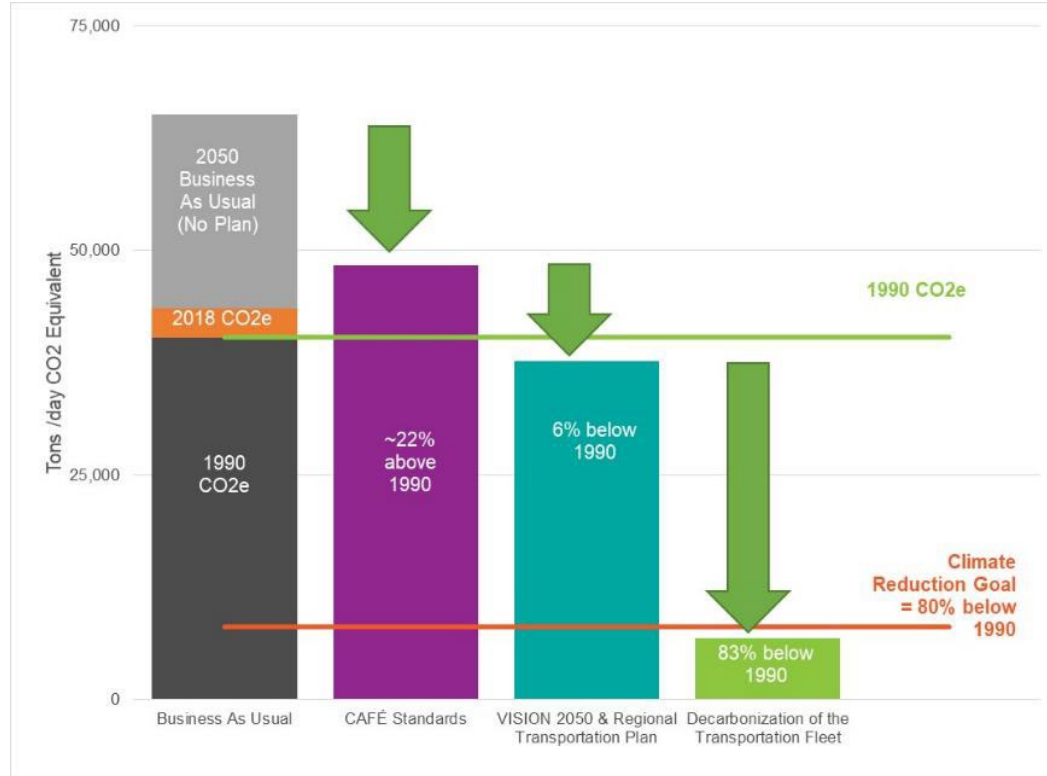
**User Fees:** State facility tolls, transition to road usage charge in later years

**Technology:** Shift to zero emission vehicles, Clean Fuels Standard, etc.



# Regional Transportation Plan – 2050 Analysis

## Steps to Meeting Regional Climate Goals



2022-2050

## REGIONAL TRANSPORTATION PLAN

Reflecting:

- VISION 2050
- RTP investments
- Fuel economy improvements
- Transition to zero emission transportation system



# Work Underway

- Transit agencies provided detailed 2030 networks in September
- Modeling and analysis of 2030 transportation network and emissions underway
- Plan is to present 2030 analysis at December Executive Board meeting
- Sensitivity testing over next few months
  - To address gap to 2030 goal (on-road transportation only)
  - Various aspects / levers of the system and their potential impacts



# Potential Sensitivity Tests

Choices

- Transit Service
  - Accelerated network expansion
  - Expanded service levels and enhanced frequencies
  - Improved access to stations
- Road network
  - Changes to roadway capacity projects
- Model various work from home scenarios
- Feedback from Executive Board?





# Potential Sensitivity Tests

User  
Fees

- Model various Road Usage Charge rate scenarios
- Feedback from Executive Board?



# Potential Sensitivity Tests

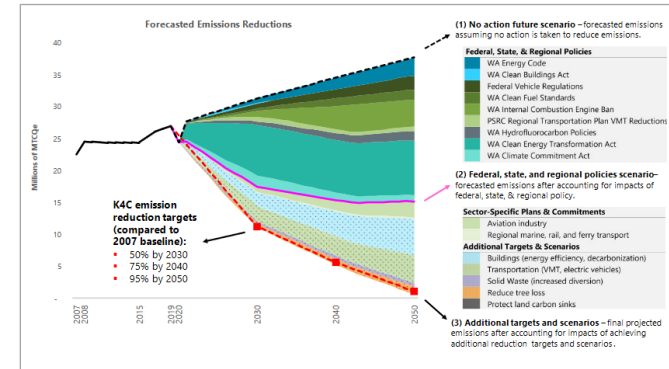
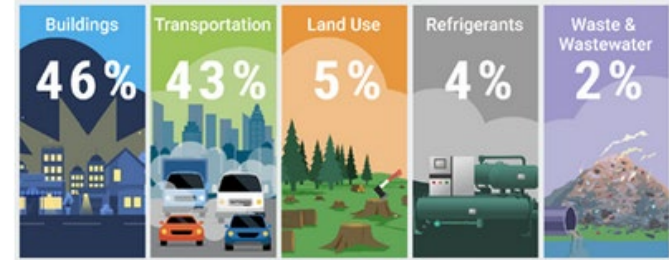
Technology

- Model various levels of EV implementation
- Feedback from Executive Board?



# Related Partnership Projects

- Puget Sound Regional Emissions Analysis Project
  - Draft greenhouse gas inventories for each county released
  - Includes forecast “wedge analyses”
  - Understanding the contribution of all sources and potential levers to reduce emissions
- Regional EV Collaborative - web-based clearinghouse out for beta review and testing
- Coordination with PSCAA on their updated Strategic Plan underway; anticipated adoption late 2022



Excerpts from the King County inventory report



# Next Steps



- Staff work continues over next two months
- Incorporate feedback from Transportation Policy Board and RTP Work Program Steering Committee on Sensitivity Tests.
- Executive Board briefings in December and January



# Thank you.

**Kelly McGourty**

Director of Transportation Planning

[kmcgourty@psrc.org](mailto:kmcgourty@psrc.org)

206-971-3601



Puget Sound Regional Council