



# Passport to 2044: Housing Session 1 Racially Disparate Impacts

October 26, 2022



Puget Sound Regional Council



Washington State  
Department of  
**Commerce**



## Passport to 2044 Series

- [Comprehensive Planning](#) – June 15
- [Climate](#) – August 17
- [Economic Development](#) – September 7
- [Transportation](#) – October 18
- Housing (1) – October 26
- Equity (1) – November 8
- Tribal Coordination – November 15
- Critical Areas – November 30
- TOD and Centers – December 13
- Elected Officials and Planning Commissions – tbd





# Logistics

---

- The recording for today's meeting and all presentations will be shared after the meeting
- Have a question? Ask in the "Q&A"
- Stick around at the end to complete our Title VI survey





# Program



**Welcoming Remarks and Introduction**



**WA State Department of Commerce**  
Racially Disparate Impacts Guidance and Data



**City of Tacoma**  
Affordable Housing Anti-Displacement Strategy Update



**Puget Sound Regional Council**  
Regional Guidance and Resources to Address Racially Disparate Impacts



**Q&A**





## **Racially Disparate Impacts in Housing**

- There are substantial inequalities in wealth, home ownership, and opportunity in our communities
- This inequitable housing landscape reflects decades of public policies and private practices
- Local comprehensive plans are an opportunity to address disparate impacts

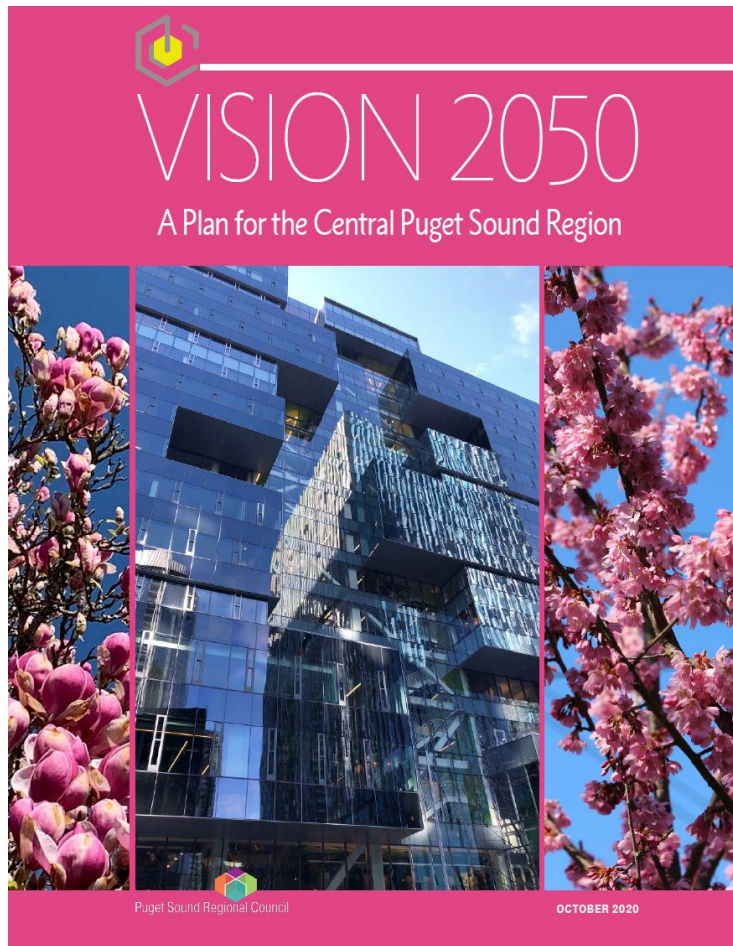
## **2023 Housing Session 2: Housing Need and Capacity**










# PSRC and Local Comprehensive Plans



**Provide resources to help you create local plans that advance regional goals around mobility, climate change, housing affordability, racial equity, and more!**

# Key Policy Themes from VISION 2050



-  Increase **housing** choices and affordability
-  Provide **opportunities** for all
-  Sustain a strong **economy**
-  Significantly reduce greenhouse gas **emissions**
-  Keep the region **moving**
-  Restore the health of **Puget Sound**
-  Protect a network of **open space**
-  Growth in **centers** and near **transit**
-  Act **collaboratively** and support **local efforts**

# Plan Review Manual



**VISION 2050 PLANNING RESOURCES**  
 Plan Review Manual  
 May 2021  
*Updated September 2022\**

Regional Collaboration	
The plan supports <b>collaboration for a healthy environment, thriving communities, and opportunities for all</b> , including coordination with other jurisdictions and agencies, tribes, ports, military installations, and adjacent regions.	
Policies and programs should:	
Support regional collaboration	Page/Policy Reference
<input checked="" type="checkbox"/> Include a statement about how the plan relates to countywide planning policies, VISION 2050, and planning requirements of the Growth Management Act	
<input type="checkbox"/> Coordinate with other jurisdictions, agencies, tribes, ports, military installations, special purpose districts, and adjacent regions (RCW 36.70A.070(6)(a)(v), MPP-RC-1, RC-4-5)	
<input type="checkbox"/> Prioritize services and access to opportunity for people of color, people with low incomes, and historically underserved communities to ensure all people can attain the resources and opportunities to improve quality of life and address past inequities (MPP-RC-2)	
<input type="checkbox"/> Address land use, transportation, and housing opportunities and challenges related to military installations, when applicable (MPP-RC-6)	
<input checked="" type="checkbox"/> Prioritize investments in centers, including regional centers, countywide centers, high-capacity transit areas with a station area plan, and other local centers (MPP-RC-8-9)	
<input checked="" type="checkbox"/> Explore funding sources, changes to regulatory, pricing, taxing, and expenditure practices, and other fiscal tools to meet infrastructure and other needs (MPP-RC-10-11, RC-Action-7, RC-Action-9)	
Additional comments on Regional Collaboration or additional documents to share [optional]: _____	

Plan Review &  
 Certification Webinar  
 hosted on June 30, 2021

Available at  
<https://www.psrc.org/our-work/plan-review>



# VISION 2050 Consistency Tools



## VISION Consistency Tool for Local Comprehensive Plans

Note: The tool shown here is for illustrative purposes. To fill out the tool, visit [www.psrc.org/our-work/plan-review](http://www.psrc.org/our-work/plan-review).

This tool is intended to help cities and counties integrate VISION 2050 into their local comprehensive plans. VISION 2050's multicounty planning policies serve as the adopted regional guidelines and principles required in state law to guide both regional and local planning. The tool also identifies transportation planning requirements of the Growth Management Act (GMA). The tool may be used at various times in the local planning process:

- Plan Update Scoping:** Use checklist items as guidance for scoping the extent of plan element updates. New or expanded issue areas in VISION 2050 are identified to support this process.
- Draft Plan Review:** Submit draft plans to PSRC prior to Planning Commission and Council review. Completing and submitting this tool and providing early drafts to PSRC help identify potential consistency issues early in the process.
- Certification Review:** Along with the adopted plan, the tool will assist in PSRC's review of the plan. Demonstrating inclusion of the necessary information in the checklist helps facilitate certification. *Note: The PSRC Executive Board is the final decision-making body for plan certification.*
- Regional Collaboration:** The tool provides cities and counties an opportunity to highlight supports sharing of best practices across the region and benefits jurisdictions as they

### Resources

- Regional Plans: [VISION 2050](#), [Regional Transportation Plan](#), and [Regional Economic Development Plan](#)
- [VISION 2040 to VISION 2050](#) – summary of what changed in VISION 2050
- [VISION 2050 Policy Matrix](#) – a comparison of multicounty planning policies and adopted local policies
- [Plan Review Manual webpage](#) – access more information about the review and certification process and other resources by policy area. See previous [certification reports](#) for areas that have been reviewed.

How to use the tools:

- Fill out tools using Formsite and submit with drafts and adopted plans

### Regional Collaboration

The plan supports **collaboration for a healthy environment, thriving communities, and opportunities for all**, including coordination with other jurisdictions and agencies, tribes, ports, military installations, and adjacent regions.


Policies and programs should:

Support regional collaboration	Page/Policy Reference
✓ Include a statement about how the plan relates to countywide planning policies, VISION 2050, and planning requirements of the Growth Management Act	
⊖ Coordinate with other jurisdictions, agencies, tribes, ports, military installations, special purpose districts, and adjacent regions (RCW 36.70A.070(6)(a)(v), MPP-RC-1, RC-4-5)	
⊖ Prioritize services and access to opportunity for people of color, people with low incomes, and historically underserved communities to ensure all people can attain the resources and opportunities to improve quality of life and address past inequities (MPP-RC-2)	
⊖ Address land use, transportation, and housing opportunities and challenges related to military installations, when applicable (MPP-RC-6)	
✓ Prioritize investments in centers, including regional centers, countywide centers, high-capacity transit areas with a station area plan, and other local centers (MPP-RC-8-9)	
✓ Explore funding sources, changes to regulatory, pricing, taxing, and expenditure practices, and other fiscal tools to meet infrastructure and other needs (MPP-RC-10-11, RC-Action-7, RC-Action-9)	

Additional comments on Regional Collaboration or additional documents to share [optional]: \_\_\_\_\_

Tools should be used throughout the planning process

Go-to resources for VISION 2050 and Plan Review process

Look for (!) or  in the tools

# VISION 2050 Resources



## Plan Review Manual

**VISION 2050 PLANNING Plan Review Manual**  
May 2021

**VISION Consistency Tool for Local Comprehensive Plans**

Note: The tool shown here is for illustrative purposes. To fill out the tool, visit [www.psrc.org/our-work/plan-review](http://www.psrc.org/our-work/plan-review).

This tool is intended to help cities and counties integrate VISION 2050 into their local comprehensive plans. VISION 2050's multicounty planning policies serve as the adopted regional guidelines and principles required in state law to guide both regional and local planning. The tool also identifies transportation planning requirements of the Growth Management Act (GMA). The tool may be used at various times in the local planning process:

- Plan Updates Scoping:** Use checklist items as guidance for scoping the extent of plan element updates. New or expanded issue areas in VISION 2050 are identified to support this process.
- Draft Plan Review:** Submit draft plans to PSRC prior to Planning Commission and Council review. Completing and submitting this tool and providing early drafts to PSRC help identify potential consistency issues early in the process.
- Certification Review:** Along with the adopted plan, the tool will assist in PSRC's review of the plan. Demonstrating inclusion of the necessary information in the checklist helps facilitate certification. Note: *The PSRC Executive Board is the final decision-making body for plan certification.*
- Regional Collaboration:** The tool provides cities and counties an opportunity to highlight innovative policies and programs. This supports sharing of best practices across the region and benefits jurisdictions as they apply for planning grants and awards.

**Resources**

- Regional Plans: VISION 2050, Regional Transportation Plan, and Regional Economic Strategy
- VISION 2040 to VISION 2050 – summary of what changed in VISION 2050
- VISION 2050 Policy Matrix – a comparison of multicounty planning policies and actions from VISION 2040 to VISION 2050
- Plan Review Manual webpage – access more information about the review and certification process and find PSRC guidance and other resources by policy area. See previous certification reports for areas for future work.

VISION 2050 Consistency Tool for Comprehensive Plans 1

## Plan Review Handout

**Plan Review and Certification Program** Puget Sound Regional Council

**Implementing VISION 2050 Through Local Planning**

Long-range plans and policies are developed by the region's counties, cities, countywide planning groups, and transit agencies to help shape communities and plan for growth. PSRC reviews local plans for consistency with state law, VISION 2050, and the Regional Transportation Plan.

State law requires PSRC to review and certify countywide planning policies, local comprehensive plans, and Sound Transit's long-range plan. PSRC also certifies regional center plans and provides comments on local transit plans.

PSRC's plan review includes topics such as mobility, emissions, regional growth, housing, and intergovernmental coordination. Compared to the previous regional plan, VISION 2050 provides new and additional focus on several issues, including housing affordability, climate change, racial equity, coordination with Tribal Nations and other stakeholders, and planning for high-capacity transit.

**Types of Review**

- Countywide Planning Policies
- Local Comprehensive Plans
- Regional Center Plans
- Long-Range Transit Plans

**Why certification?**

- Regional Collaboration:** Challenges such as climate change, housing affordability, congestion, and racial disparities require regional coordination. PSRC's review and certification of local plans and policies supports local governments and public agencies in addressing regional issues.
- Requirements in State Law:** Certification ensures state requirements for transportation planning are being met.
- Transportation Funding:** Certification of local comprehensive plans is required by PSRC for jurisdictions to be eligible for PSRC's federal transportation funding.

## Compiled MPPs

**VISION 2050 Multicounty Planning Policies**

VISION 2050's multicounty planning policies are adopted under the state's Growth Management Act. Multicounty planning policies address regionwide issues within a collaborative planning framework. Counties and cities look to multicounty planning policies to inform updates to countywide planning policies and local comprehensive plan updates. This document compiles the goals and multicounty planning policies for each chapter for quick reference. More about VISION 2050 is available at <https://www.psrc.org/vis20>.

## V2050 Policy Matrix & Updates Summary

**VISION 2050 Goals, Policies, and Actions Table** August/October 2020

The adopted goals, policies, and actions in VISION 2050 were used as a starting point for VISION 2050. The table compares specific revisions and rationale for changes to the multicounty planning policies in VISION 2050 and translates between the policy numbering in VISION 2040 and VISION 2050. The table is organized by policy section in the plan. Amendments made by the Growth Management Policy Board or the Executive Board in response to comments are noted in the "Type/Reason of Change" column. PSRC's General Assembly adopted VISION 2050 on October 29, 2020.

Goal	The region plans collaboratively for a healthy environment, thriving communities, and opportunities for all	New goal. Prior chapter (General Policies) did not include a goal statement
VISION 2050 #	Revision/Action	Type/Reason of Change
MPP-RC-1	MPP-G-1 Coordinate planning efforts among jurisdictions, agencies, and intercity recognized stakeholders, such as adjacent regions, where there are common borders or related regional issues, to facilitate a common vision.	Coordination - change adds reference to adjacent regions; GAMPB amended in response to comment review
MPP-RC-2	n/a Provide services and access to opportunity for people of color, people with low incomes, and historically underserved communities to ensure all people can attain the resources and opportunities to improve quality of life and address past inequalities.	Equity - new policy focuses on addressing racial equity; GAMPB amended in response to comment review
MPP-RC-3	n/a Make reduction of health disparities and improvement of health outcomes across the region a priority when developing and carrying out regional, countywide, and local plans.	Health - new policy focuses on improving health outcomes; GAMPB amended in response to comment review
MPP-RC-4	n/a Coordinate with tribes in regional and local planning, recognizing the mutual benefits and potential for impacts between growth occurring within and outside tribal boundaries.	Tribes - new policy emphasizes the need for coordination between local and regional agencies and tribes
MPP-RC-5	n/a Consult with military installations in regional and local planning, recognizing the mutual benefits and potential for impacts between growth occurring within and outside installation boundaries.	Military - new policy emphasizes the need for coordination between local and regional agencies and the military
MPP-RC-6	n/a Recognize the beneficial impacts of military installations as well as the land use, housing, and transportation challenges for adjacent and nearby communities.	GAMPB added in response to comment review
MPP-RC-7	MPP-DP-7, DP-10, T-12 Give funding priority - both for transportation infrastructure and for economic development - to support designated regional growth centers and manufacturing/industrial centers, consistent with the regional vision. Regional funds are prioritized to regional centers. County-level and local funding are also appropriate to prioritize regional growth centers.	Funding - change consolidates existing funding-related policies that address funding for both regional growth centers and manufacturing/industrial centers

## VISION 2050 Booklet

**VISION 2050**

Puget Sound Regional Council

## Recorded Webinar

**Plan Review & Certification Program**  
June 30, 2021

Puget Sound Regional Council

VISION 2050: Plan Review & Certification Program - June 30, 2021

# PSRC Guidance and Resources



## Available Now:

- [Conservation Toolkit](#)
- [Growth Target Guidance](#)
- [Economic Development Element Guide](#)
- [Tribal Coordination](#)
- [Community Data Profiles](#)
- [Equitable Engagement](#)
- [TOD + Centers Guidance](#)
- [Climate Change Guidance](#) (draft)

## Upcoming:

- Transportation Guidance
- Growth Outreach Toolkit
- Housing Guidance
- Equity Planning Resources
- Land Use Vision Forecast

### VISION 2050 Planning Resources

PSRC develops guidance, research, and data products to support local planning and advance VISION 2050. Browse resources below by policy topic area.



#### Regional Plans

- > [VISION 2050](#)
- > [Regional Transportation Plan](#)
- > [Regional Economic Strategy](#)

#### Guidance by Policy Topic Area (from PSRC and partner agencies)

<a href="#">Regional Collaboration and Equity</a>	>
<a href="#">Regional Growth Strategy</a>	>
<a href="#">Environment</a>	>
<a href="#">Climate Change</a>	>
<a href="#">Development Patterns: Centers and Transit-Focused Growth</a>	>

### [VISION 2050 Planning Resources](#)

### [Previous Certification Reports](#)

# Regional Guidance & Resources to Address Racially Disparate Impacts in Housing



**Passport to 2044 Workshop • October 26, 2022**

# Overview

## **Today's workshop**

- Regional framework
- Regional data
- Resources and guidance

## **Future workshop (early 2023)**

- Assessing and accommodating need



**Regional  
Framework**

# Housing in VISION 2050

- Housing is a regional issue
- Housing access and affordability are tied to transportation, the economy, the environment, and overall quality of life
- Jobs–housing balance is a key issue



# Regional Housing Strategy Actions and Tools

## Supply



**Build more housing of different types**

## Stability



**Provide opportunities for residents to live in housing that meets their needs**

## Subsidy



**Create and sustain long-term funding sources to create and preserve housing for very low-income households and unhoused residents**



# Housing Checklist in Plan Review Manual

## Housing

The plan guides the **preservation, improvement, and expansion of the housing stock** to provide a range of **affordable, accessible, healthy, and safe housing choices** to every resident. It continues to **promote fair and equal access to housing for all people**.

Policies and programs should:

Assess housing needs	Page/Policy Reference
⊖ Address affordable housing needs by developing a housing needs assessment and evaluating the effectiveness of existing housing policies, and documenting strategies to achieve housing targets and affordability goals. This includes documenting programs and actions needed to achieve housing availability including gaps in local funding, barriers such as development regulations, and other limitations.(H-Action-4)	
Increase housing supply and choices	Page/Policy Reference
✓ Increase housing supply and densities to meet the region’s current and projected needs at all income levels consistent with the Regional Growth Strategy (MPP-H-1)	
✓ Expand the diversity of housing types for all income levels and demographic groups, including low, very low, extremely low, and moderate-income households (MPP-H-2-6, H-9)	
⊖ Expand housing capacity for moderate density housing, i.e., “missing middle” (MPP-H-9)	
⊖ Promote jobs-housing balance by providing housing choices that are accessible and attainable to workers. Include jobs-housing balance in housing needs assessments to better support job centers with the needed housing supply (MPP-H-1, H-6, H-Action-4)	
✓ Expand housing choices in centers and near transit (MPP-H-7-8)	
✓ Promote flexible standards and innovative techniques to encourage housing production that keeps pace with growth and need (MPP-H-10)	
Support the development and preservation of affordable housing	Page/Policy Reference
⊖ Use inclusionary and incentive zoning to provide more affordable housing when creating additional housing capacity (H-Action-5)	
⊖ Jurisdictions planning for high-capacity transit stations: Create and preserve affordable housing near high-capacity transit! (MPP-H-8, H-Action-1)	
Address inequities in access to housing	Page/Policy Reference
⊖ Identify potential physical, economic, and cultural displacement of low-income households and marginalized populations and work with communities to develop anti-displacement strategies in when planning for growth (MPP-H-12, H-Action-6)	
⊖ Promote homeownership opportunities while recognizing historic inequities in access to homeownership opportunities for communities of color (MPP-H-5)	
⊖ Identify and begin to undo local policies and regulations that result in racially disparate impacts, displacement, and exclusion in housing including zoning that may have a discriminatory effect and areas of disinvestment and infrastructure availability	

Plan Review Manual available online at <https://www.psrc.org/media/3565>

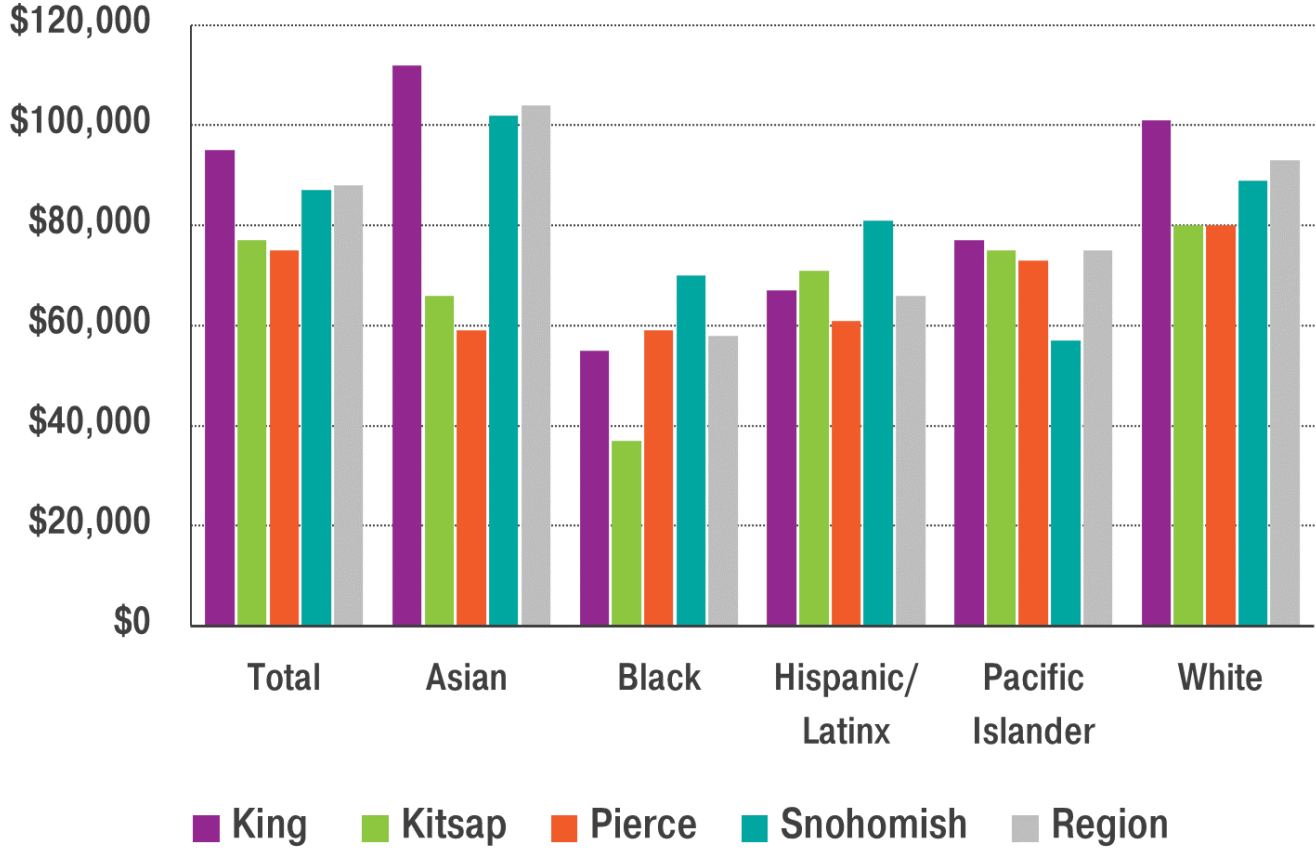
Focus of today’s presentation : Addressing inequities in access to housing



**Regional  
Data**

# A Black household will earn one-third less than the regional median income

## Median Household Income by Race/Ethnicity

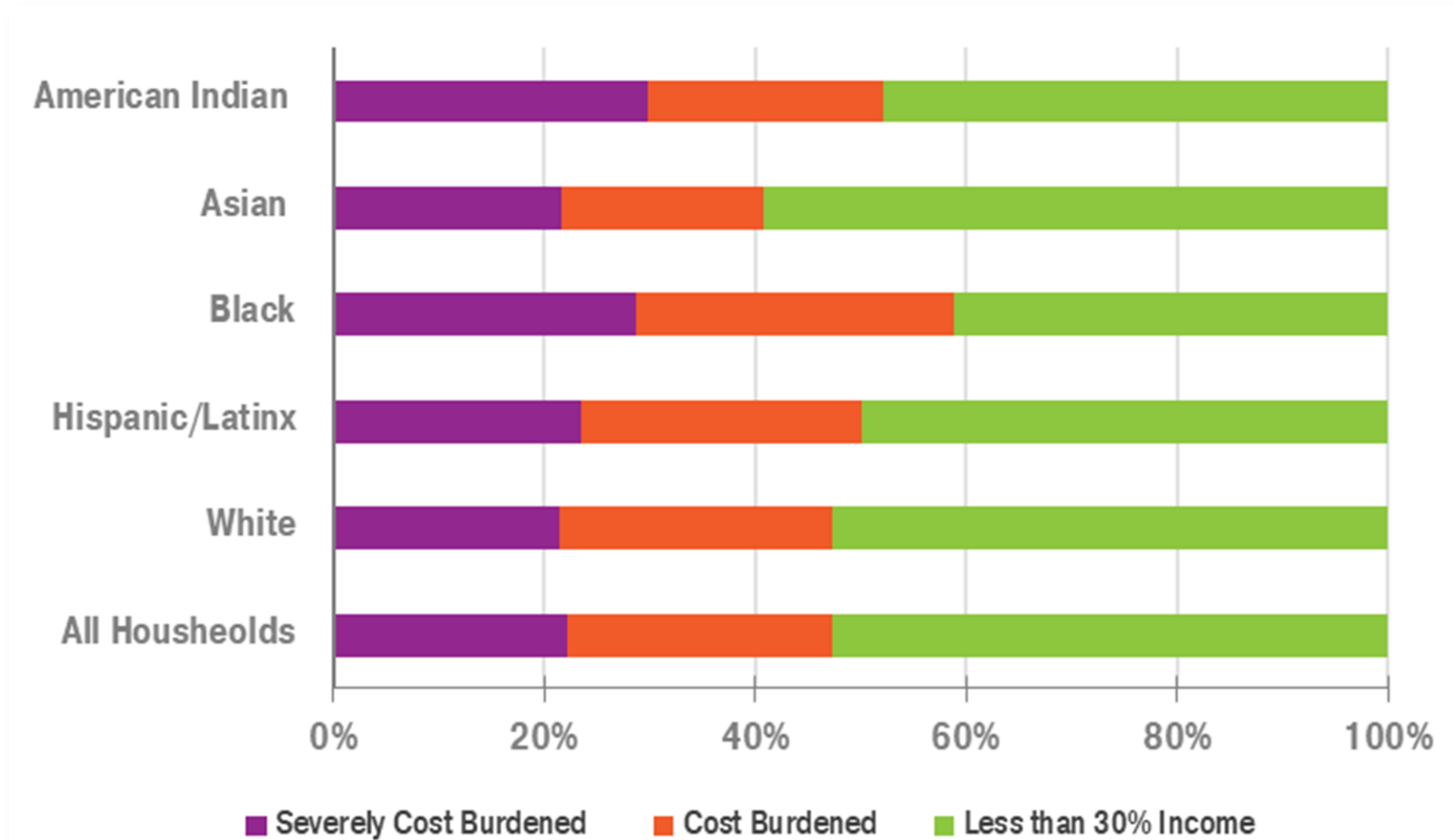


Source: ACS



# Black and American Indian households are more likely to spend the majority of income on housing costs

## Cost Burdened Renters by Race/Ethnicity

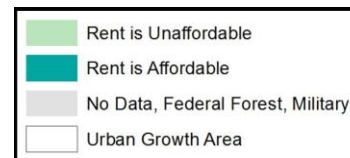
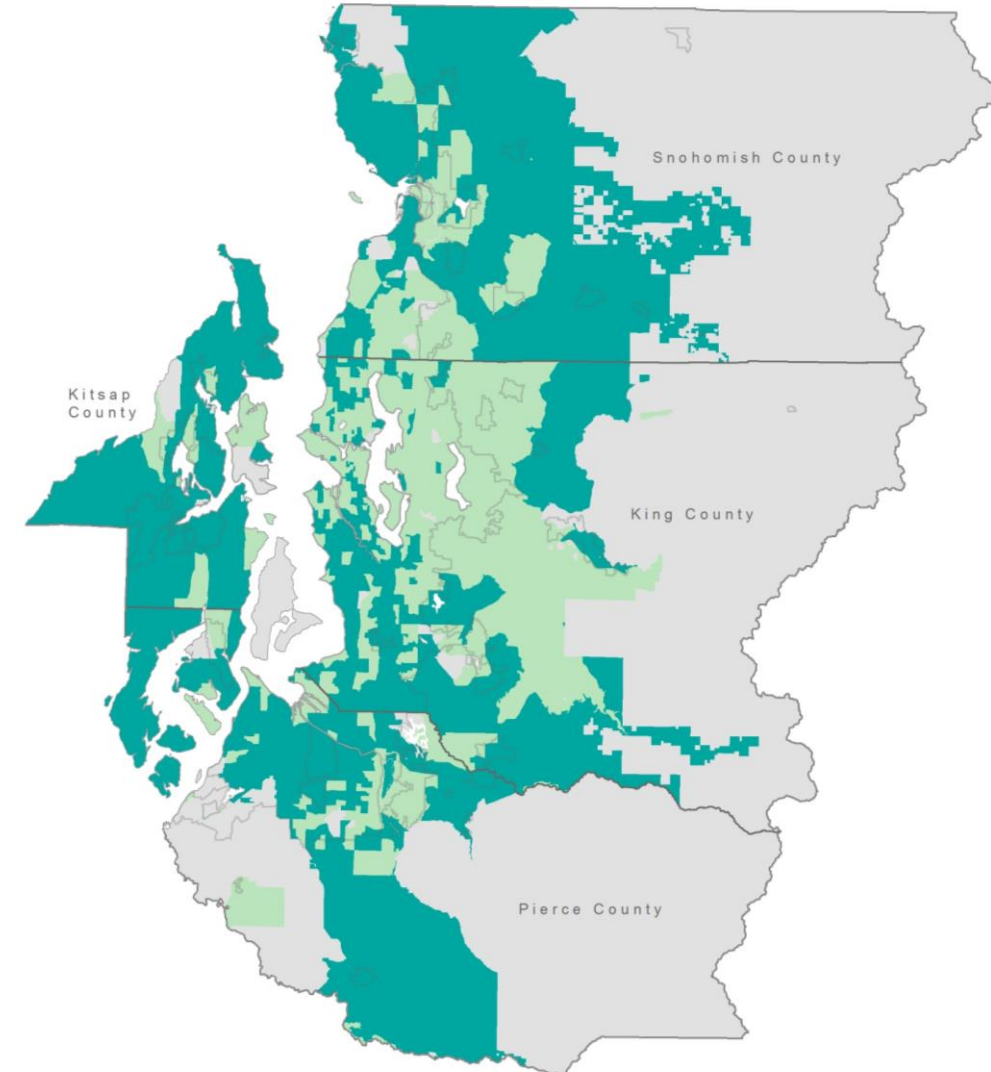


Source: ACS PUMS



# BIPOC renters have less access to affordable rental housing than white renters, underscoring disparities in income, wealth, and access to housing

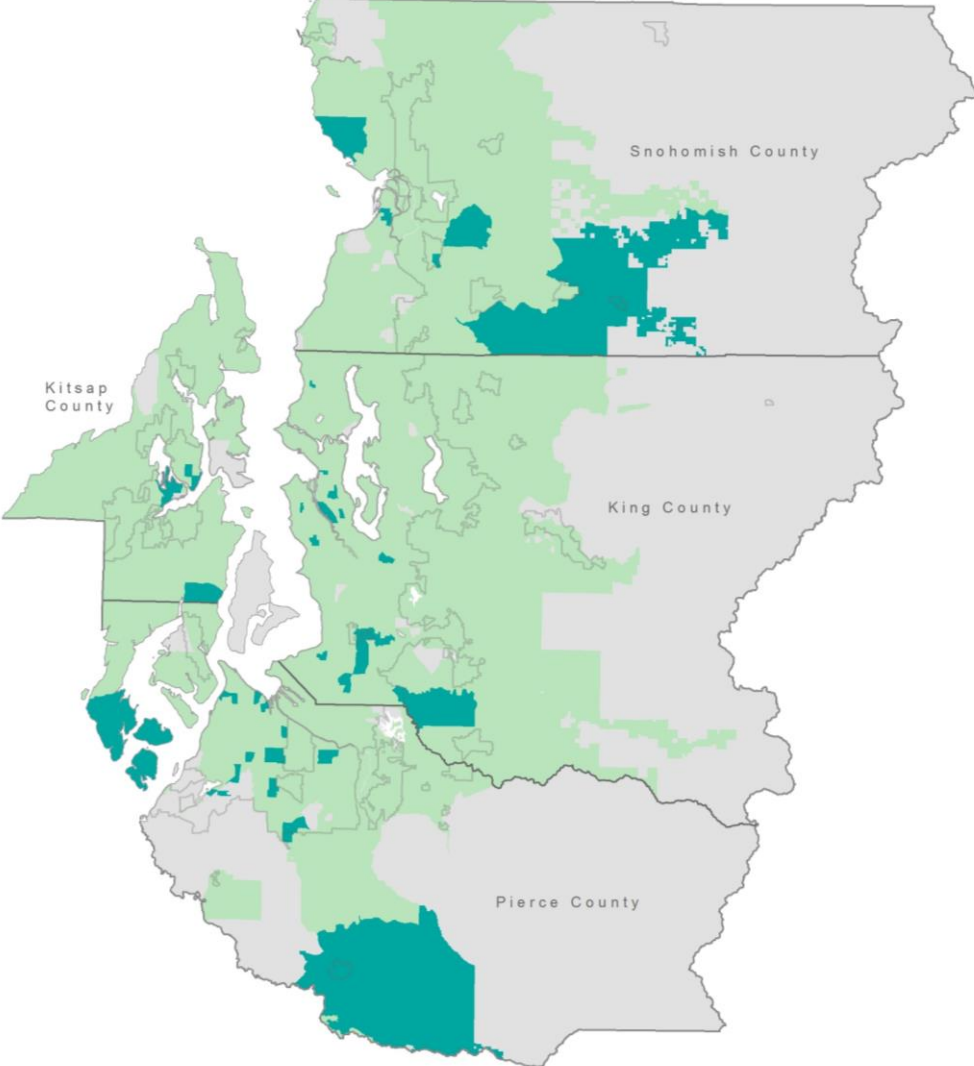
## Access to Affordable Rentals by Race/Ethnicity – **White** Renter Households



Source: U.S. Census Bureau

# BIPOC renters have less access to affordable rental housing than white renters, underscoring disparities in income, wealth, and access to housing

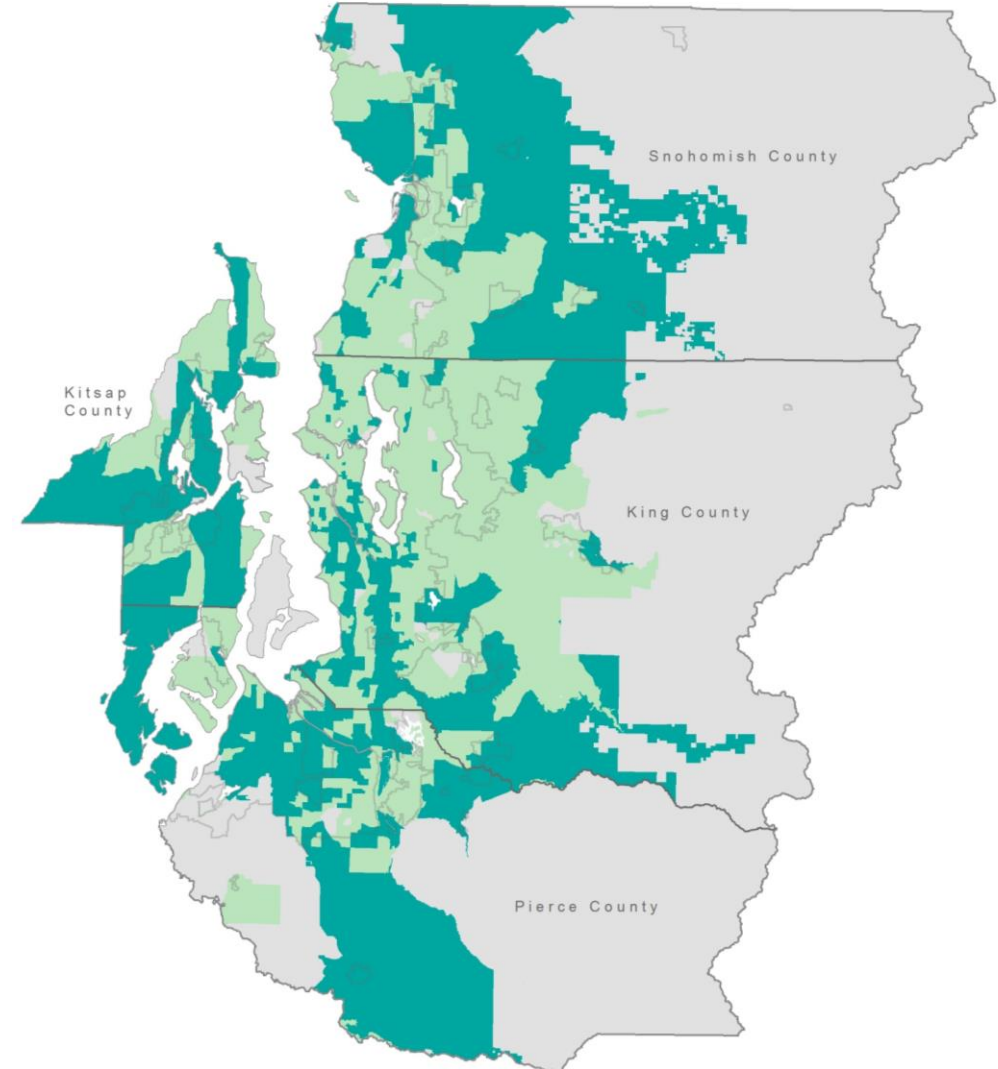
## Access to Affordable Rentals by Race/Ethnicity – **Black** Renter Households



Source: U.S. Census Bureau

# BIPOC renters have less access to affordable rental housing than white renters, underscoring disparities in income, wealth, and access to housing

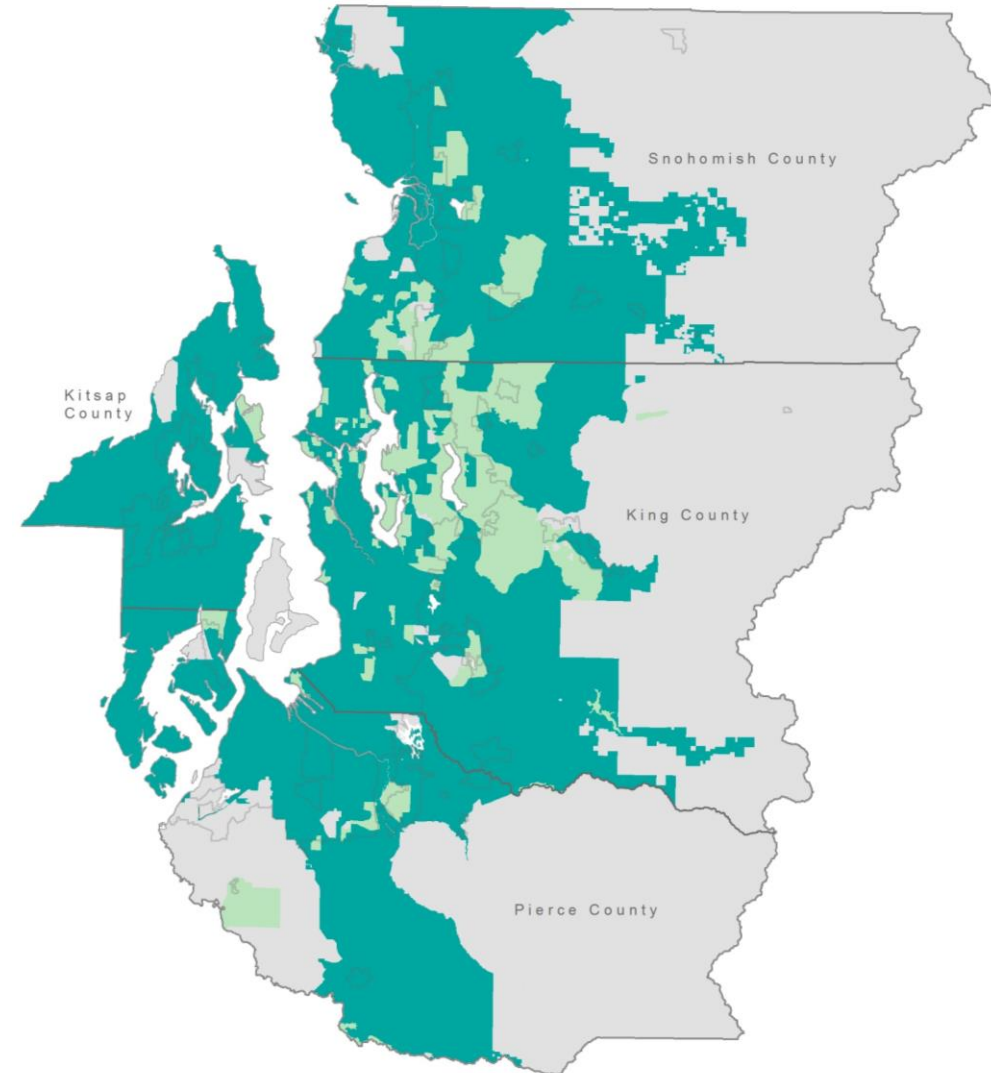
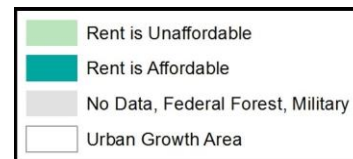
## Access to Affordable Rentals by Race/Ethnicity – **Latinx** Renter Households



Source: U.S. Census Bureau

# BIPOC renters have less access to affordable rental housing than white renters, underscoring disparities in income, wealth, and access to housing

## Access to Affordable Rentals by Race/Ethnicity – **Asian** Renter Households

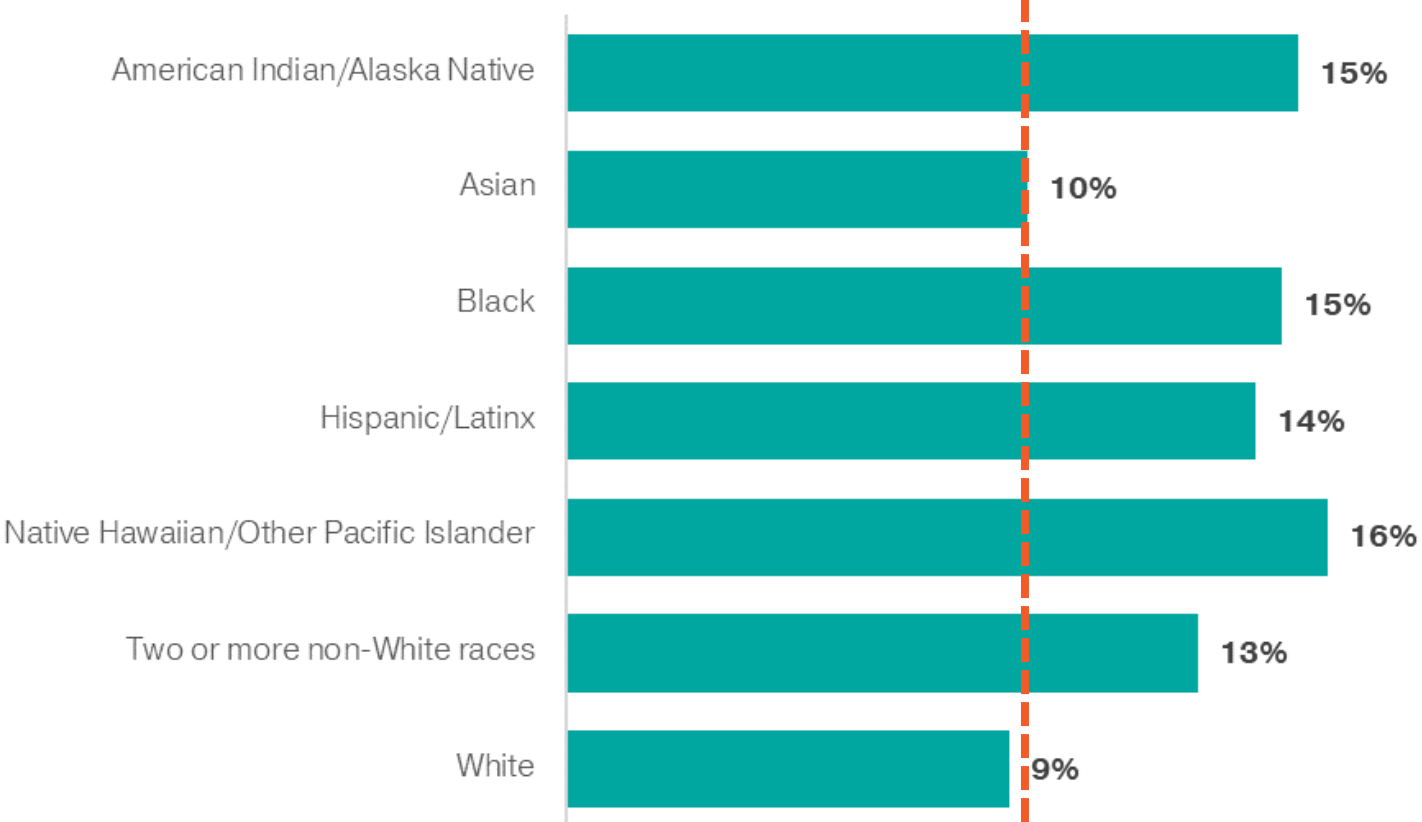


Source: U.S. Census Bureau



# People of color are less likely to get a home loan, even when controlling for income

## Loan Denial Rates by Race and Ethnicity



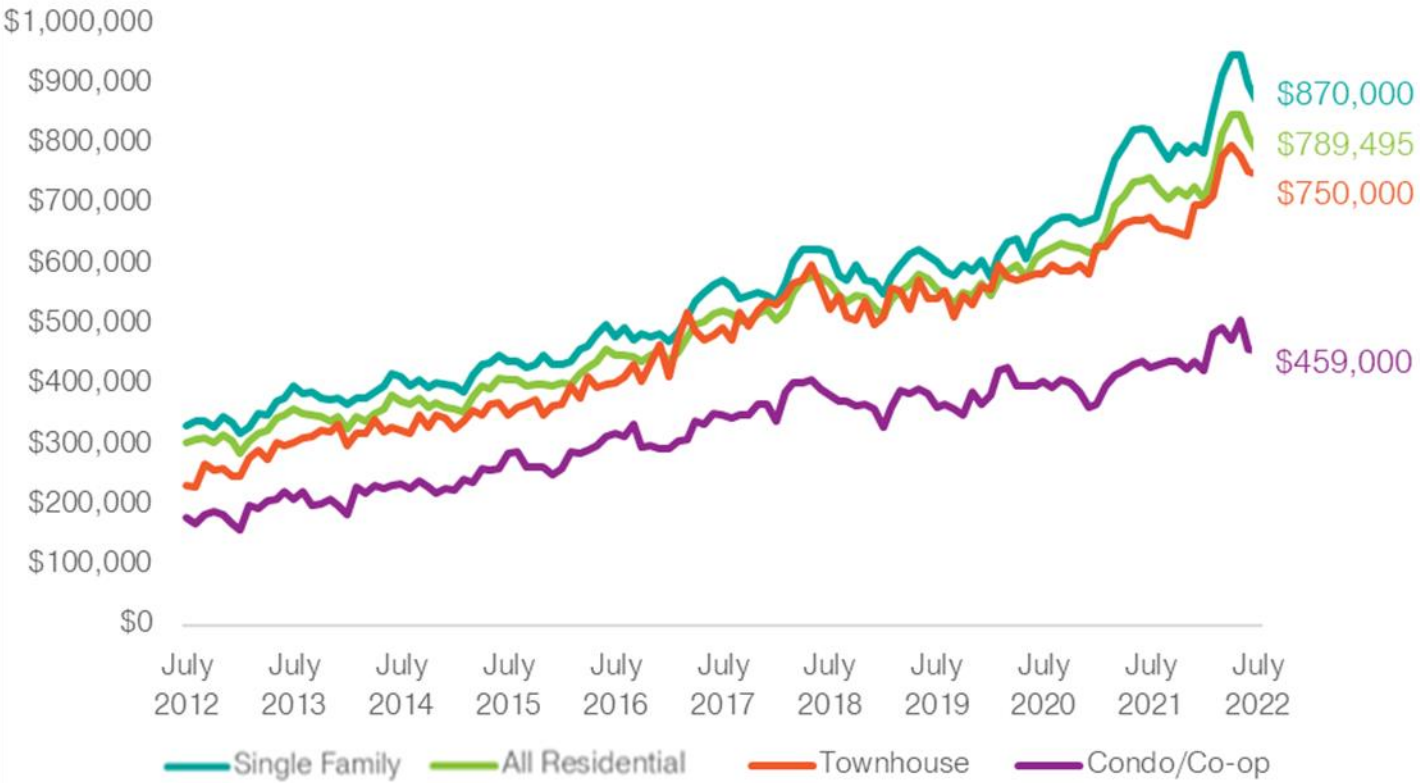
Source: Federal Financial Institutions Examination Council

Overall denial rate of 10%



# Middle density housing continues to provide less costly ownership opportunities

## Median Sales Price by Housing Type



Source: Redfin



# There continue to be disparities in home ownership between white and BIPOC households

## Homeownership Rates by Income and Race/Ethnicity

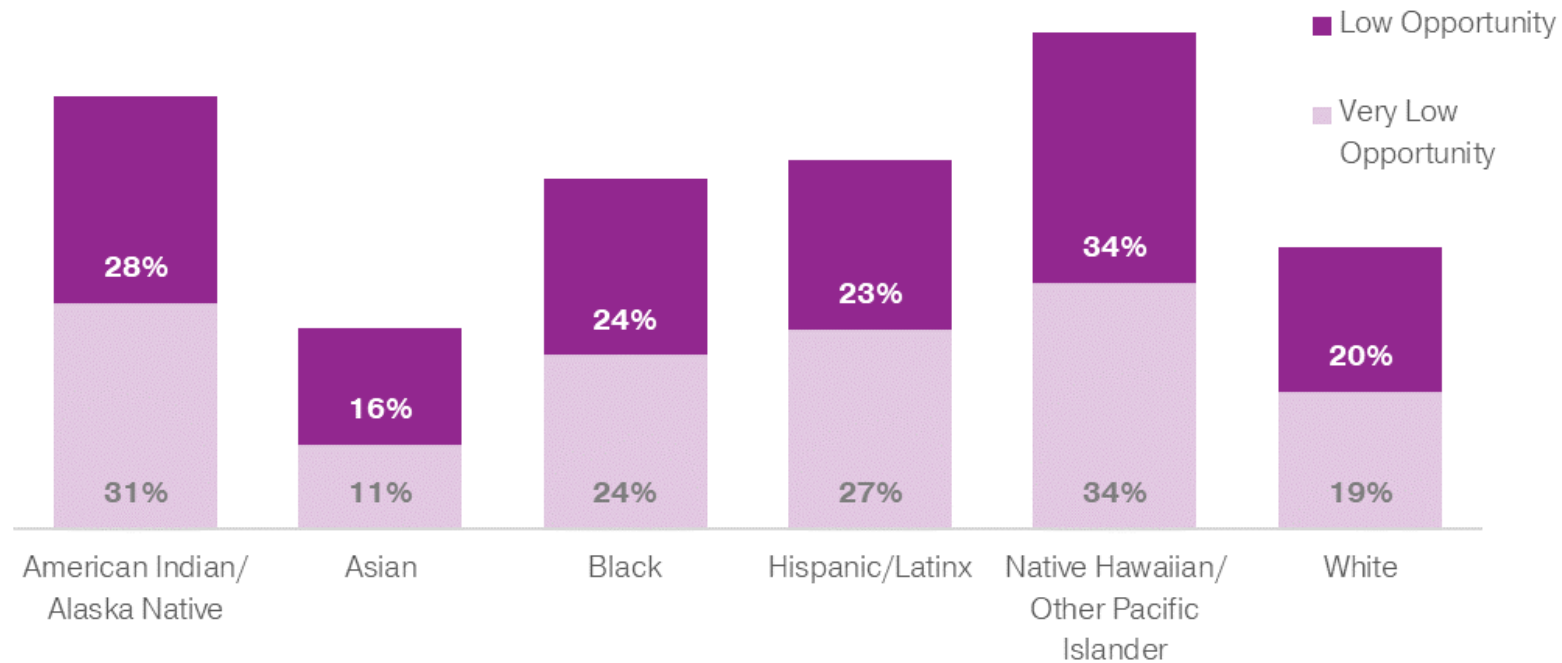


Source: U.S. Census Bureau



# There continue to be disparities in access to opportunity between white and BIPOC households

## Population in Areas of Lower Opportunity by Race/Ethnicity

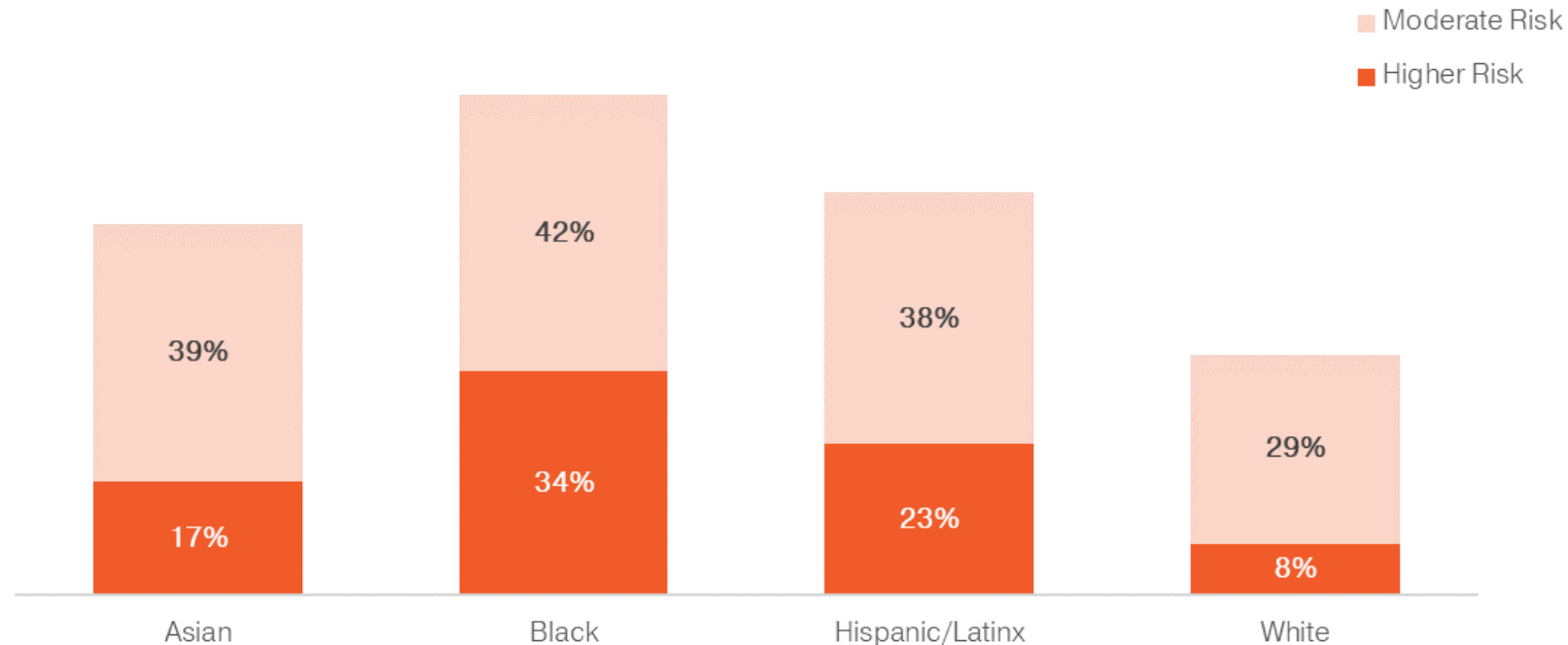


Source: U.S. Census Bureau



# Black households are four times more likely to live in communities with higher displacement risk than white households

## Population in Areas of Higher and Moderate Displacement Risk by Race/Ethnicity



Source: U.S. Census Bureau

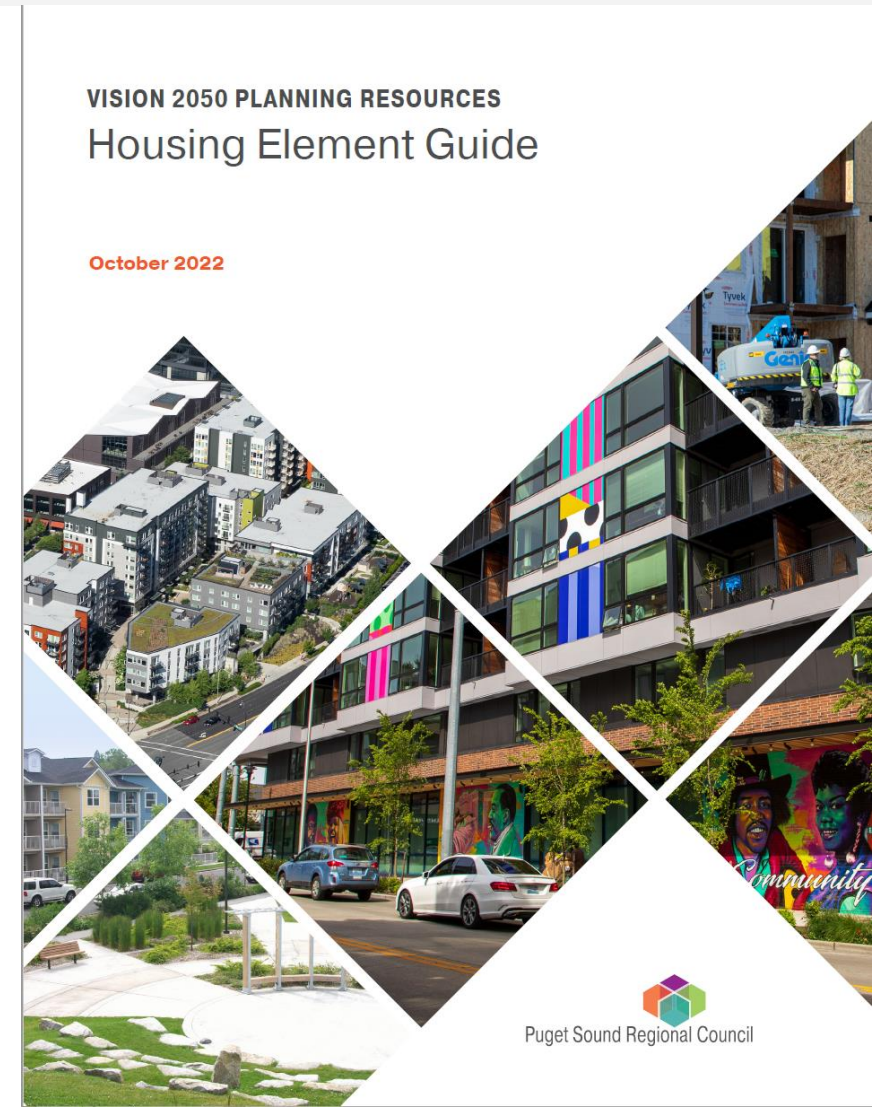




**Resources &  
Guidance**

# Draft Updated Housing Element Guide

- Planning framework for housing in VISION 2050 and Regional Housing Strategy
- Regional housing data and resources
- Guidance on developing plans and needs assessments to meet the Plan Review Manual checklist
- Available in November 2022



# Equitable Engagement Guide

## Four Considerations:

- 1) Identify communities most impacted
- 2) Develop the right engagement strategy
- 3) Establish meaningful relationships
- 4) Make engagement easy

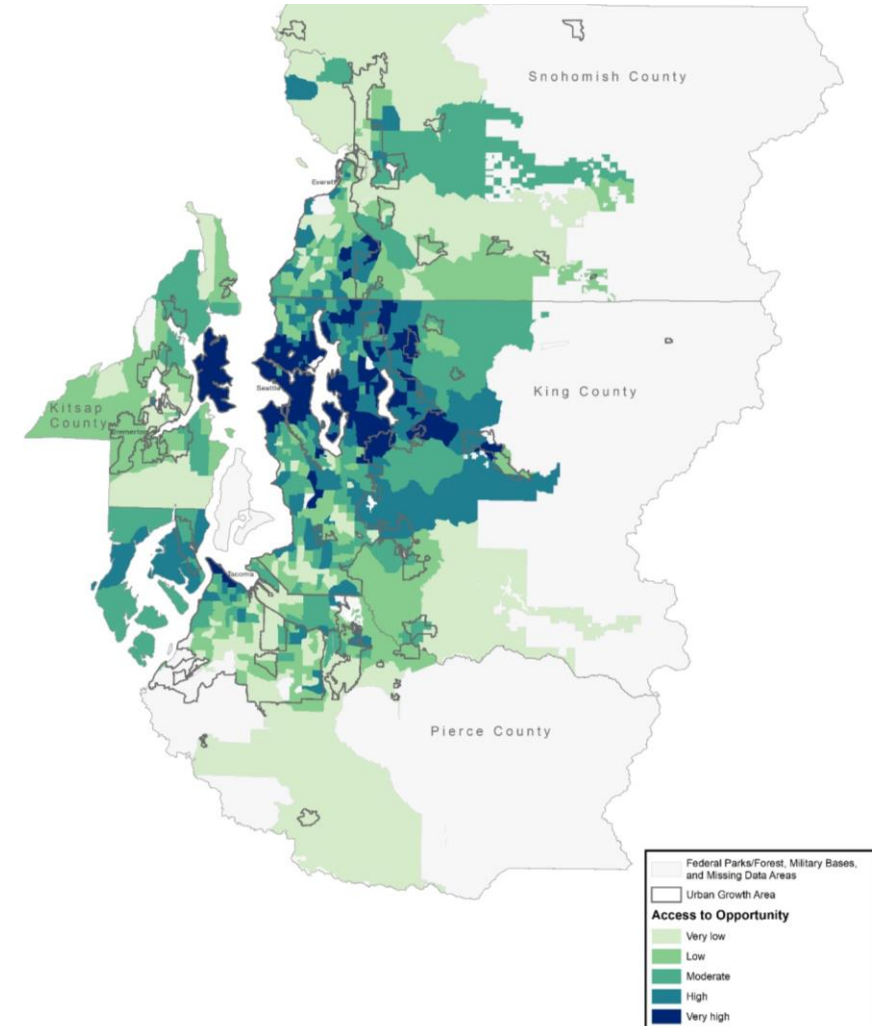
Available online at  
<https://www.psrc.org/media/5933>





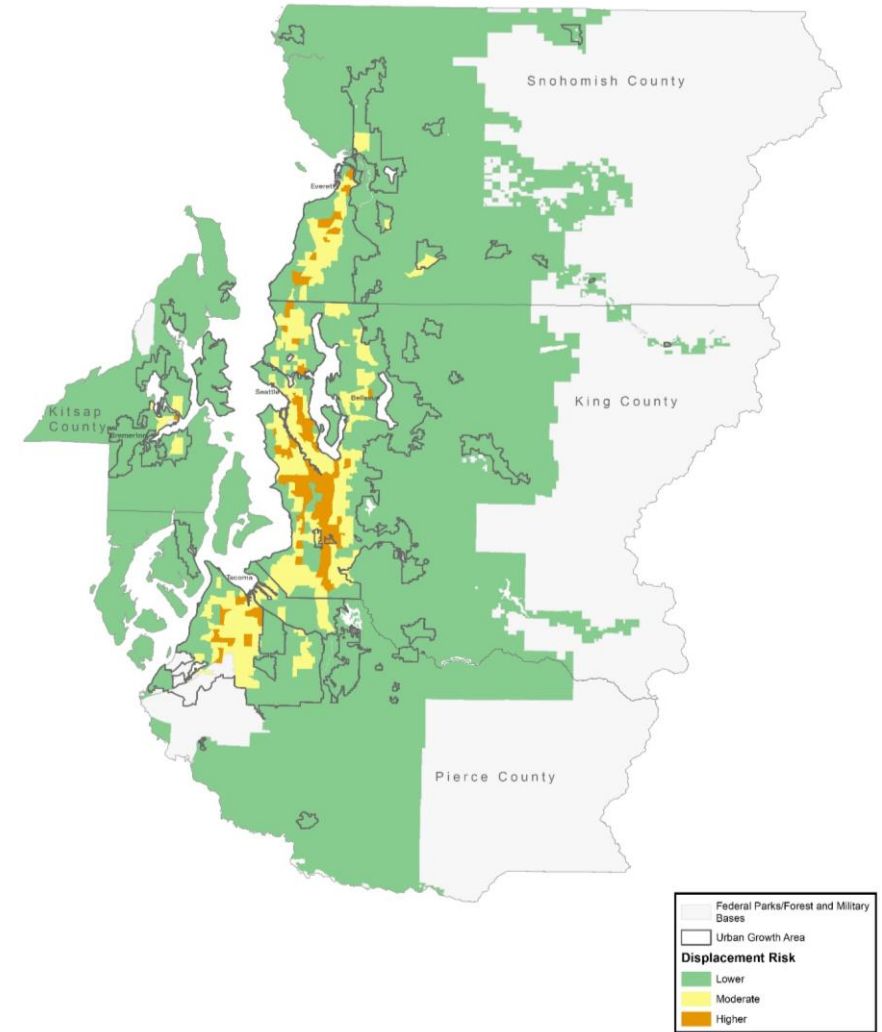
# Opportunity Mapping

- Assesses amount of opportunity that exists in neighborhoods today
- Allows analysis of growth that may take place in areas with different levels of opportunity
- Available online at <https://www.psrc.org/our-work/opportunity-mapping>



# Displacement Risk Mapping

- Identifies areas at greater risk of displacement based on current neighborhood conditions
- Highlights need for more housing opportunities and mitigation measures for growth in areas of higher displacement risk
- Available online at <https://www.psrc.org/our-work/displacement-risk-mapping>



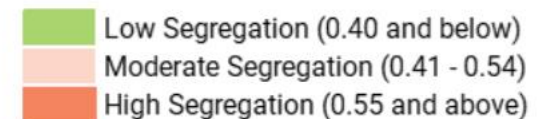
# Racial Residential Segregation

- Racial settlement patterns in the region
- Dissimilarity index to help us to understand the degree of racial residential segregation in the region
- Patterns of residential segregation in relation to access to opportunity
- Available online at <https://www.psrc.org/our-work/racial-residential-segregation>

Dissimilarity Indices - Central Puget Sound Region

	2000	2010	2020
White - American Indian/Alaska Native	0.36	0.36	0.39
White - Asian	0.41	0.42	0.43
White - Black	0.55	0.52	0.50
White - Hispanic/Latinx	0.34	0.35	0.31
White - People of Color	0.34	0.33	0.30

Source: U.S. Census Bureau, HUD, PSRC



# Housing Innovations Program

- Collection of planning resources to promote housing affordability and smart growth
- Updated materials and new webpages, including updated search and sorting functions
- Available online at <https://www.psrc.org/our-work/housing-innovations-program-hip>



## Increase Neighborhood Stability by Mitigating Residential Displacement

### Objective

Create opportunities for residents to stay in their neighborhoods as housing markets change.

### WHAT IS DISPLACEMENT?

Displacement occurs when housing or neighborhood conditions force residents to move. Displacement can be physical, when building conditions deteriorate – or economic, as costs rise. Communities of color, low-income communities, and renter neighborhoods are at a higher risk of displacement.

Gentrification is the process of changing the character of a neighborhood through the influx of more affluent residents and businesses. Gentrification can often be a precursor to displacement. Depending on the local and regional context, displacement may precede gentrification or the two may occur simultaneously. Several key factors drive gentrification and displacement: proximity to rail stations, jobs centers, historic housing stock, and location in a strong real estate market. Gentrification and displacement are regional issues as they are inherently linked to shifts in the regional housing and job market.

PSRC developed a [displacement risk tool](#) to identify areas at greater risk of residential displacement based on neighborhood conditions. In addition to this tool, PSRC is developing further guidance on residential displacement for local jurisdictions.

### RELATED TOOLS

- [Affordability covenants](#)
- [Alternative homeownership models](#)
- [Commercial linkage fees](#)
- [Community engagement plans](#)
- [Density bonuses](#)
- [Direct household assistance](#)
- [Foreclosure resources](#)
- [Incentive zoning](#)
- [Inclusionary zoning](#)
- [Local housing fund](#)
- [MFTE](#)
- [Micro units and SROs](#)
- [Mixed use development](#)
- [Mobile/manufactured homes](#)
- [Multifamily development](#)
- [Nonprofit partnerships](#)
- [Preservation and rehabilitation](#)
- [TDR for affordable housing](#)
- [Tenant protections](#)
- [Upzones and rezones](#)

# Equity Planning Resources for Comprehensive Plans

- Policy by chapter – Equity-related items from the comp plan checklist
  - Background
  - Highlight external planning resources
  - Local examples
  - Relevant data resources
- Highlight other interesting planning work, especially outside the region
- Available by end of 2022



# Equity Planning Resources for Comprehensive Plans

## Regional Collaboration

- Prioritize access to opportunity to address past inequities

## Environment, Climate Change

- Prioritize reduction of impacts to vulnerable populations

## Growth + Development Patterns

- Inclusive engagement
- Health disparities

## ★ Housing

- Residential displacement

## Economy

- Commercial displacement, barriers for economically disadvantaged communities

## Transportation

- Mobility choices, racial and social equity as a core objective

## Public Services

- Equitable access to services



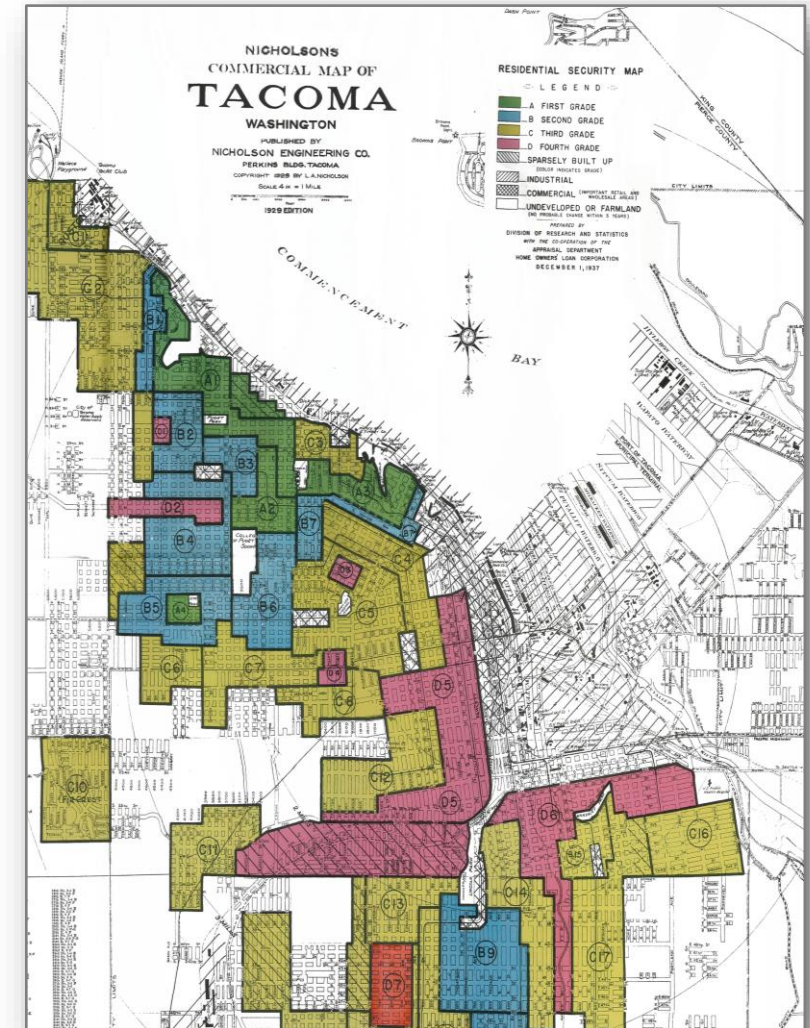
# Racial Equity Impact Assessment

- Tool to examine racial equity impacts of policies and actions in local comprehensive plan updates and other local planning efforts
- Incorporates equity in decision-making process
- Series to questions asked when evaluating policies and plans
- Available early 2023



# Legacy of Structural Racism Interactive Report

- Interactive website to identify root causes of racial disparities
- Topic Covered
  - Colonization
  - Immigration and Migration
  - Redlining and Restrictive Covenants
  - WWII Era
  - Civil Rights Movement and Urban Renewal
  - Contemporary History and Policies
- Available in early 2023







**Questions?**



Laura Benjamin, AICP  
Principal Planner  
[lbenjamin@psrc.org](mailto:lbenjamin@psrc.org) • 206-464-7134



Thank you.