

Puget Sound Regional Household Travel Survey (HTS) Program

2022 October 20



Puget Sound Regional Council

Brian H. Y. Lee, Ph.D.
Program Manager

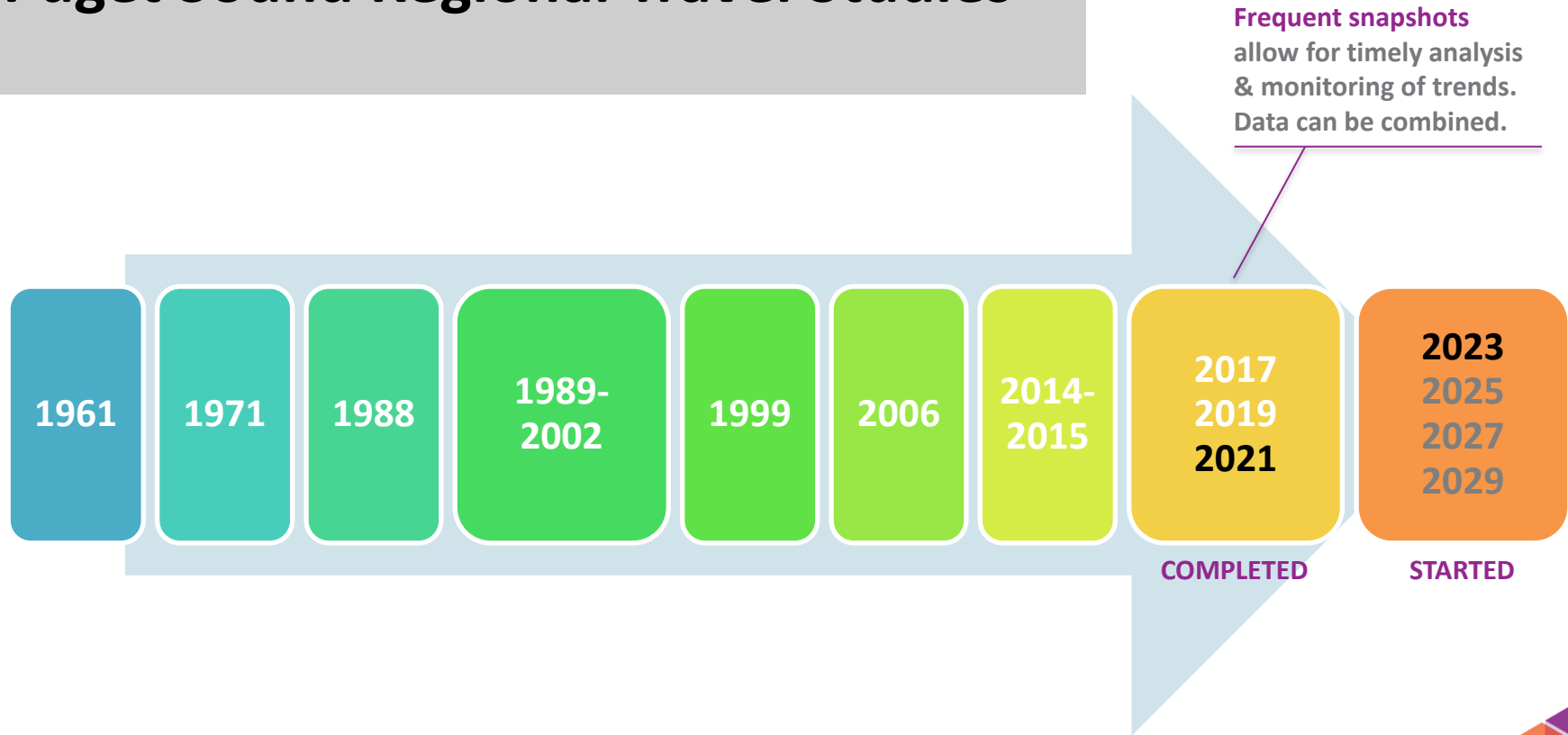
Suzanne Childress
Data Scientist

Presentation overview

- **Brief intro to the Household Travel Survey (HTS) Program**
- **Highlights from 2021 survey data**
(Contributions from PSRC HTS Analysis Group, especially: Christy Lam, Grant Gibson, Mary Richards, Megan Grzybowski)
- **Updates on the 2023 survey project**



Puget Sound Regional Travel Studies



Webpage: <https://www.psrc.org/household-travel-survey-program>



Multi-year HTS goal

The surveys capture **regionally representative** data for activity/travel behavior of **residents** on a **typical weekday**.

Random (address-based) sampling
+ extensive representation of
people & places + data weighting

Other travels (visitors,
external/pass-through,
commercial) not captured

Data collected Mon-Thu;
Re-examine for 2023

For additional info, see 2022 January 20 RSC presentation:

<https://www.psrc.org/boards-committees/upcoming-meetings/meeting/2022/january/regional-staff-committee-remote-only>



2022 presentations of 2021 HTS data

Thu 7/21: [Regional Staff Committee \(RSC\)](#)

Wed 7/27: [Transportation Operators Committee \(TOC\)](#)

Wed 8/10: [Transportation Demand Management Committee \(TDM\)](#)

Tue 9/13: [Bicycle & Pedestrian Advisory Committee \(BPAC\)](#)

Wed 9/21: [Special Needs Transportation Committee \(SNTC\)](#)

Wed 10/12: [Freight Advisory Committee \(FAC\)](#)

Each link leads to a different presentation of findings from the 2021 HTS data



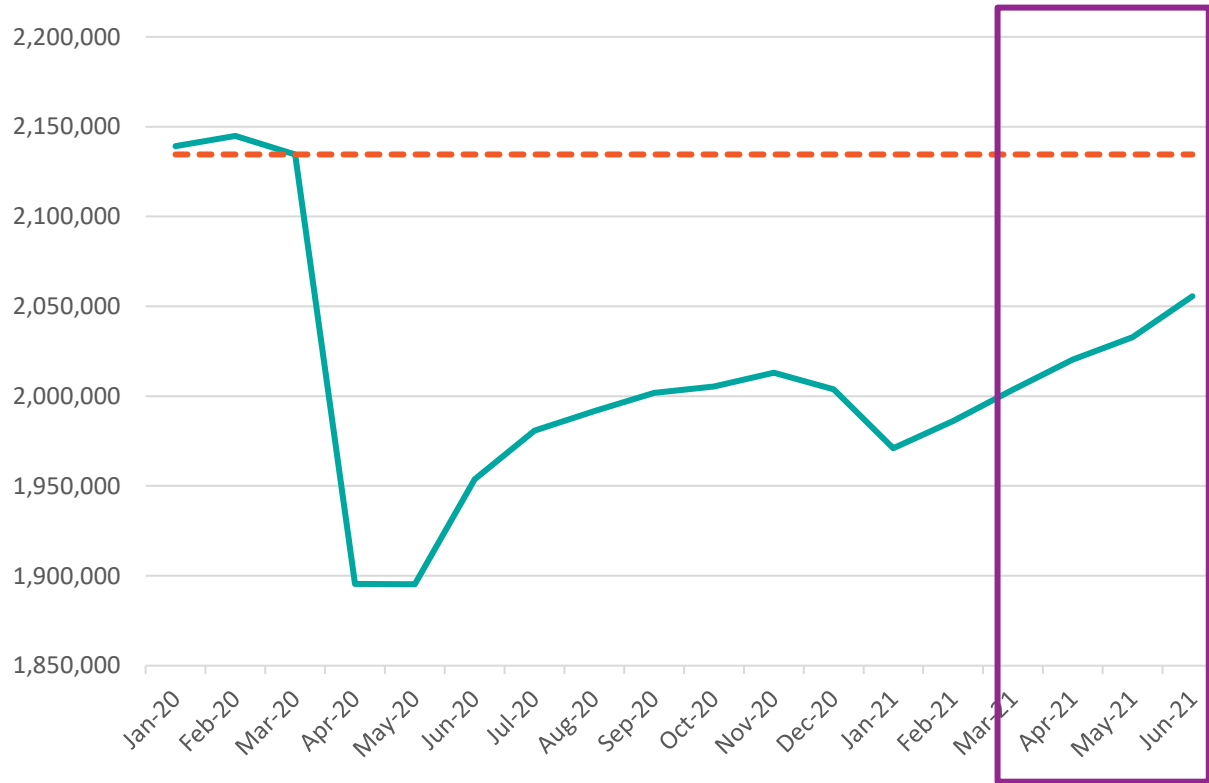
Highlights from 2021 HTS findings

- **Work location**
- **Mode shares**
- **Walk frequency**
- **Trip purpose**
- **Home deliveries & services**



Macroeconomic context

Regional covered employment



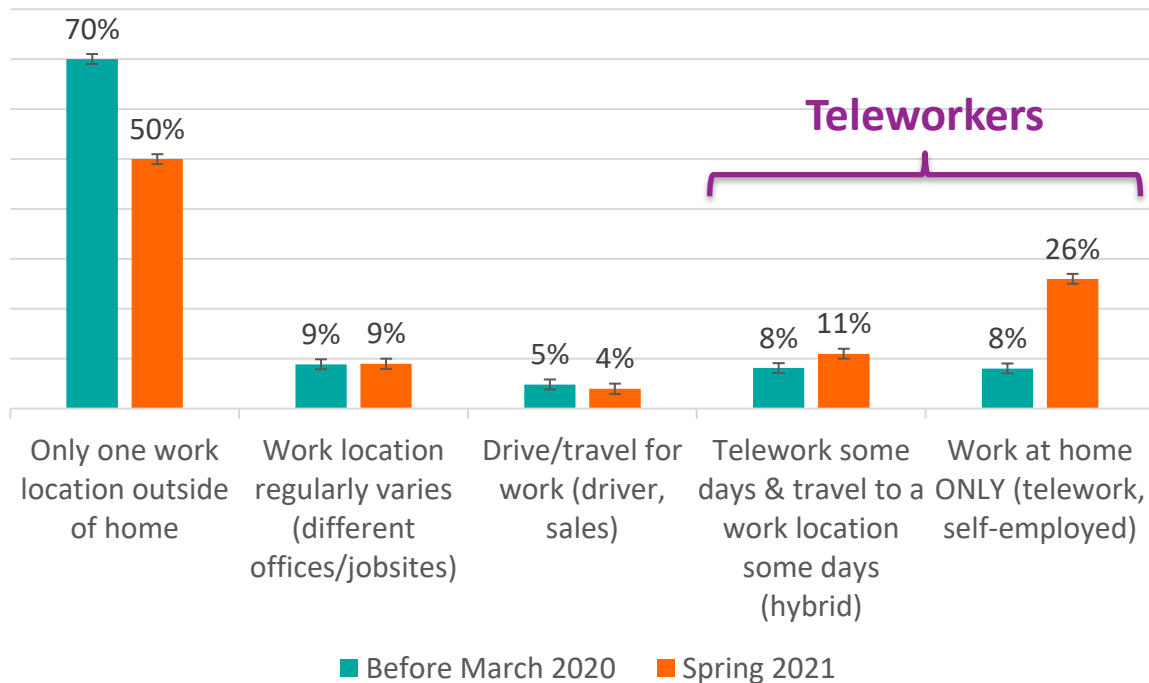
- 2021 survey period: April to June
- **Employment rising during 2021 survey**
- **Remained ~100,000 below March 2020 level**



Work location (2021 survey)

Before March 2020 & Spring 2021

See [7/11 RSC](#) & [8/10 TDM](#) for related analyses by gender, industry, race/ethnicity



- 2021 survey asked workers about their work location for two periods, also added “hybrid” option
- **Jump in teleworkers (from 16% to 37%)**
- **Most workers (63%) worked exclusively outside of home in 2021**



Work location (2021 survey)

Compared to 2021 American Community Survey (ACS)

[Census Bureau](#) asked workers: “How did this person usually get to work LAST WEEK?”

- Response choices include modes & work from home; only one option can be selected
- Workers who teleworked once or twice a week would likely be excluded

2021 ACS 1-year data, worked from home (residents):

PSRC region	30%
King	38%
Kitsap	19%
Pierce	16%
Snohomish	25%

2021 HTS: 37% telework
(26% telework only +
11% telework some days)

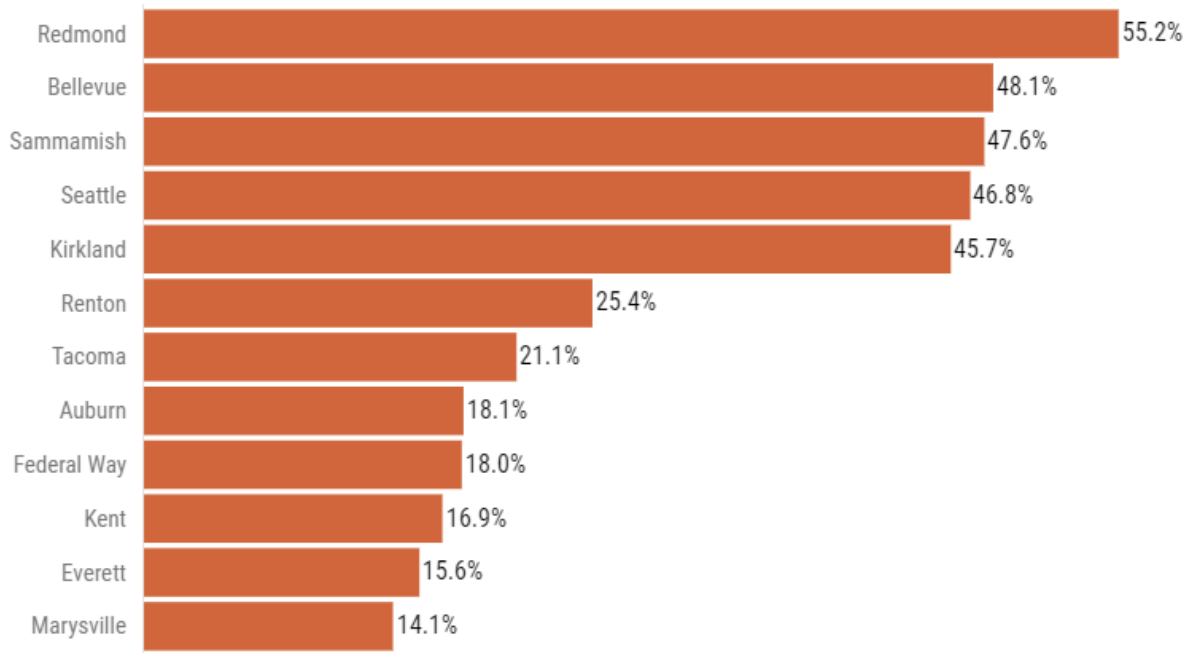


Work location (2021 survey)

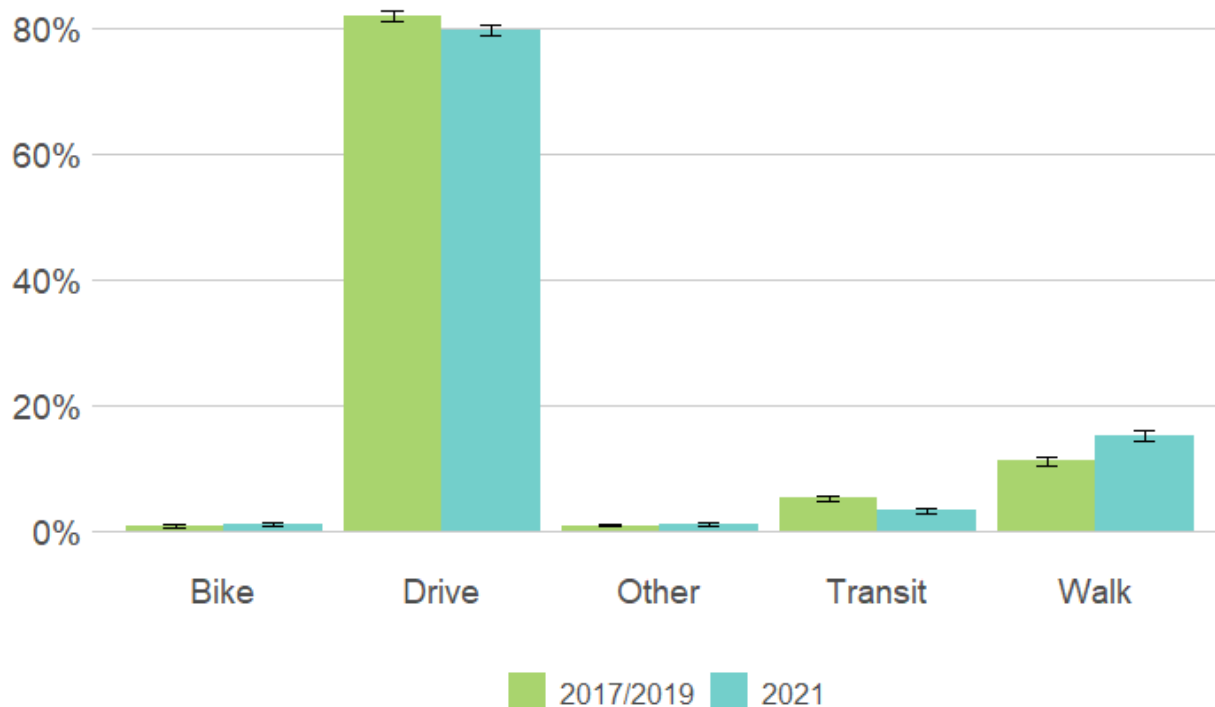
Compared to 2021 American Community Survey (ACS)

2021 ACS 1-year data, worked from home (residents):

Cities over 65,000 in the central Puget Sound region



Mode shares (2017, 2019, 2021 surveys)



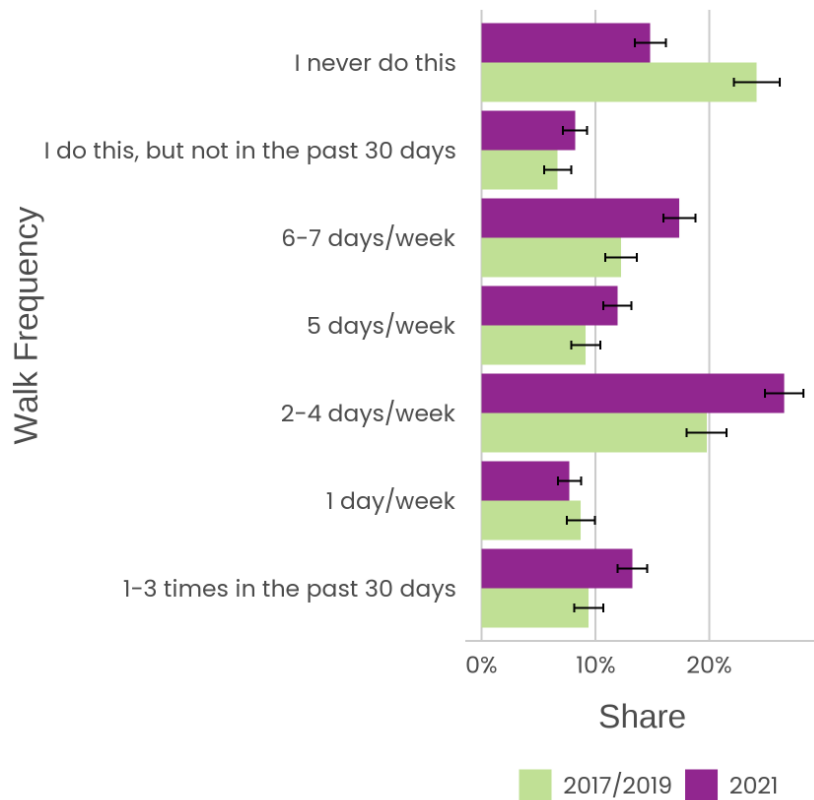
See [7/27 TOC](#) for related analyses by gender, income, race/ethnicity, vehicles

- Surveys collected data (mode, destination, purpose, etc.) on weekday trips
- Shares for adults
- **2021: Drive & transit shares decreased, walk share increased**
- **All changes in mode shares at regional level were modest**



Walk frequency (2017, 2019, 2021 surveys)

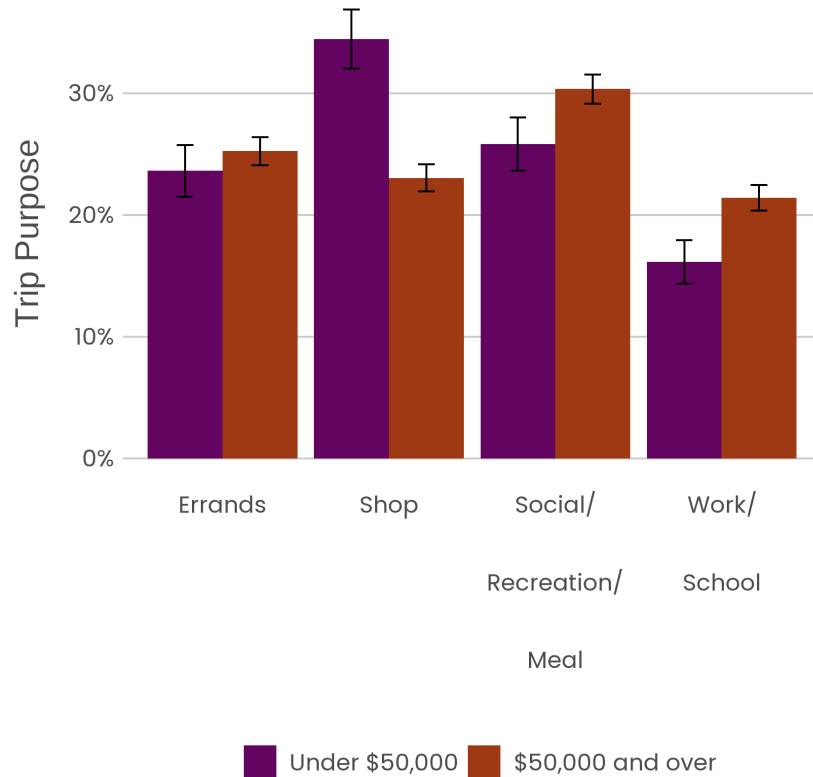
See [9/13 BPAC](#) for walk/bike analyses by income, purpose, race/ethnicity, vehicles



- Surveys asked people how often they walked, biked in past 30 days
- **Most people walked sometimes, even before COVID-19**
- **During pandemic, share of people who walked sometimes increased from ~75% to ~85%**



Trip purpose by income (2021 survey)



See [9/21 SNTC](#) for travel of households w/ lower income, older adults, People of Color

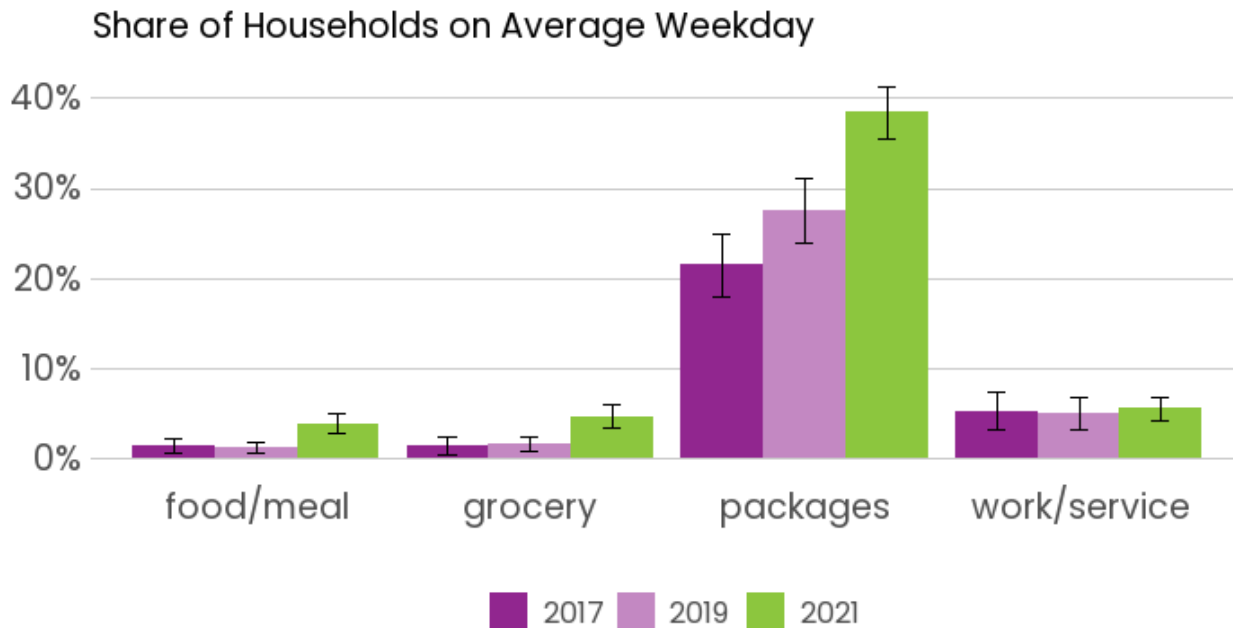
- Surveys asked for trip purpose & household income
- **2021: People in lower income households go shopping for 1/3 of trips (vs. 1/4 for higher income households), less likely to travel for work & school**



Home deliveries & services

(2017, 2019, 2021 surveys)

See [10/12 FAC](#) for delivery trends by income, lifecycle, Regional Growth Centers




- Surveys asked how many home deliveries or services received
- **Shares of households received one or more of each type**
- **2021: dramatic upticks for all except work/service (e.g., house clean, landscape)**



2023 HTS project timeline

- 2022**
- ✓ **Jan:** RSC presentation & follow-up announcement
 - ✓ **Mar:** Seek contract authority for consultant services (PSRC portion only)
 - ✓ **Apr:** Member commitments due for “add-on” data samples in the 2023 HTS
 - ✓ **May:** Issue Request for Proposals
 - ✓ **Jun:** Seek contract authority for consultant services (PSRC & “add-on” portions)
 - ✓ **Jul/Aug:** Select consultant & negotiate scope of work
 - ✓ **Sep/Oct:** Sign MOUs with “add-on” members; Sign consultant contract
 - Oct: Start 2023 HTS project with consultant (next week!)**
- 2023**
- Apr-Jun:** Data collection
 - Jul:** Start collaborative process with consultants to clean & weight data
- 2024**
- Mar:** Final data delivery & publication





PSRC Household Travel Survey Program Webpage:

<https://www.psrc.org/our-work/household-travel-survey-program>

Brian H. Y. Lee

blee@psrc.org

Suzanne Childress

schildress@psrc.org

Thank you.

