

# PSRC's Climate Work Program

Transportation Policy Board  
October 13, 2022



Puget Sound Regional Council

# Overview of PSRC's Climate Change Work Program

## Policy Framework

- VISION 2050
- Regional Transportation Plan
- Project Selection

## Partnerships

- GHG Inventory
- Local Agency Guidance
- Alternative Fueled Vehicles
- Preparedness / Resilience

## Analyses

- Environmental Impact Statement – VISION, RTP
- Four-Part Greenhouse Gas Strategy
- Project-Level Emissions



# Regional Transportation Plan

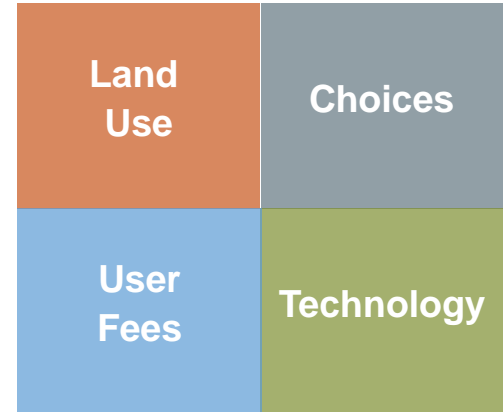
- Action item to:
  - Develop a 2030 transportation network and inputs to conduct a 2030 analysis aligned with adopted Four-Part GHG Strategy; and
  - Continue to work with partner agencies including PSCAA on implementation strategy for achieving climate goals and monitor progress.

Deadline set for this work by December 31, 2022; work is already underway



# Four-Part Greenhouse Gas Strategy

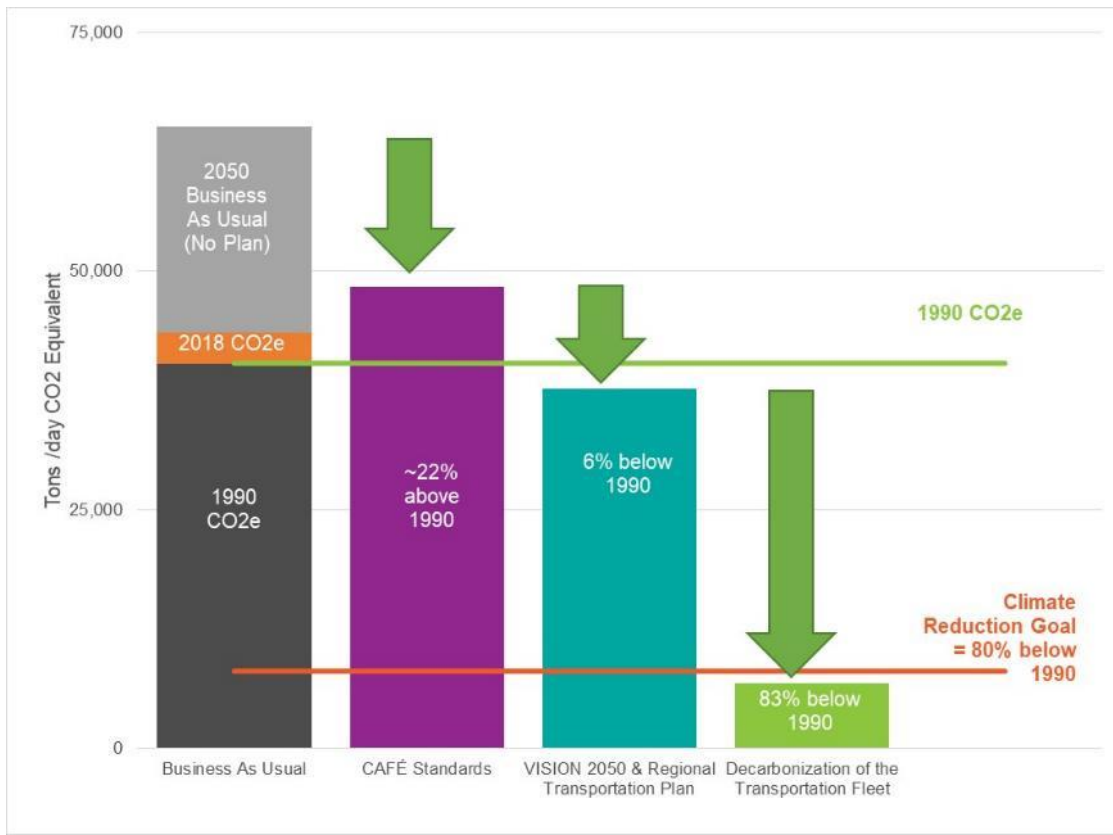
- **Land Use:** VISION 2050 regional growth strategy
- **Choices:** expanded and integrated regional transit network, active transportation and other multimodal investments
- **User Fees:** state facility tolls, transition to road usage charge in later years
- **Technology:** tremendous opportunity with recent and planned actions related to zero emission vehicles, Clean Fuels Standard, etc.



# Regional Transportation Plan – 2050 Analysis

## Steps to Meeting Regional Climate Goals

2022–2050  
**REGIONAL TRANSPORTATION PLAN**



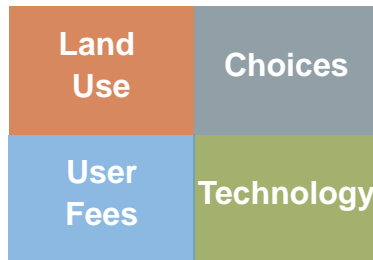
Reflecting:

- VISION 2050
- RTP investments
- Fuel economy improvements
- Transition to zero emission transportation system



# Work Underway: 2030 Analysis

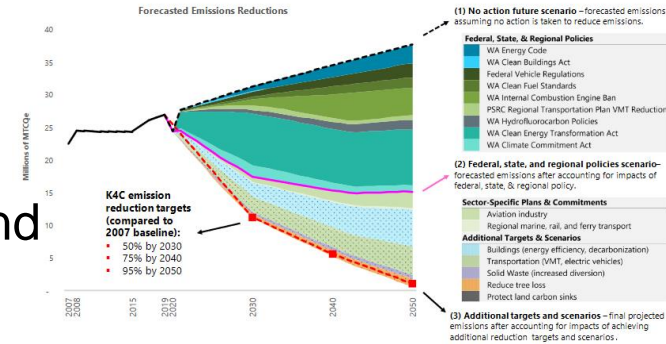
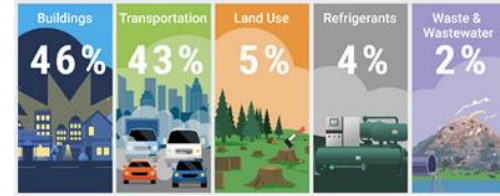
- Transit agencies provided detailed 2030 networks in September
  - Modeling and analysis of 2030 transportation network and emissions underway
  - Sensitivity testing over next few months
    - To address gap to 2030 goal (on-road transportation only)
    - Various aspects / levers of the system and their potential impacts





# Related Partnership Projects

- Puget Sound Regional Emissions Analysis Project
  - Draft greenhouse gas inventories for each county released
  - Includes forecast “wedge analyses”
  - Understanding the contribution of all sources and potential levers to reduce emissions
- Regional EV Collaborative - web-based clearinghouse out for beta review and testing
- Coordination with PSCAA on their updated Strategic Plan underway; anticipated adoption late 2022



*Excerpts from the King County inventory report*



# Next Steps

- Staff work continues over next two months
- Preliminary results to board in December
- More comprehensive briefing of analysis results, gap to target, discussion of strategies and implementation plan in January 2023





**Thank you.**

**Kelly McGourty**  
**Director of Transportation Planning**  
**[kmcgourty@psrc.org](mailto:kmcgourty@psrc.org)**  
**206-971-3601**



Puget Sound Regional Council