



Puget Sound Regional Council

Equity Planning Guidance

Equity Advisory Committee | October 6, 2022

Goals

- Get committee feedback on approach and resources in preliminary draft [see meeting agenda packet]
 - Feedback on the draft? Are we on the right track? Is additional information needed?
 - Do you know of existing resources or examples we should include?



Regional Equity Strategy



Capacity Building

Learning Opportunities
Prioritizing Equity
Inclusive Procurement
Hiring and Retention



Data and Research

Equity Analyses
Equity Tracker
Legacy of Structural Racism
Data & Analysis



Community Engagement

Equity Advisory Committee
Anti-Displacement Orgs Support
Equitable Engagement Guidance



Best Practices

Racial Equity Impact Assessment
Equity Planning Guidance



Project Phases

Phase 1: Resources and sample policies organized by VISION 2050's main policy areas to support jurisdictions in this process.

These policy areas include: Regional Collaboration, Regional Growth Strategy, Environment, Climate Change, Development Patterns, Housing, Economy, Transportation, and Public Services

Phase 2: Identify other plans and planning processes in the region where equity could be better addressed or centered in the work

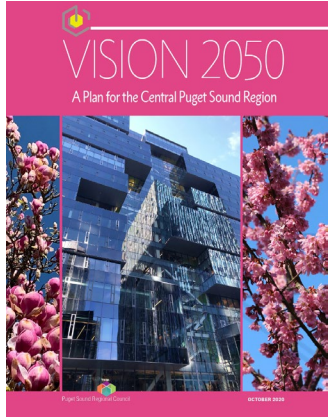


Equity in VISION 2050

- Expanded focus in plan
- Actions and policies across all chapters
- Equity analysis included in environmental review
- Displacement risk mapping



Plan Review Manual



VISION 2050 PLANNING RESOURCES Plan Review Manual May 2021



Equity Planning Guidance

2012 King County Countywide Planning Policies

With amendments ratified by June 25, 2016



City of Edmonds Comprehensive Plan



Adopted July 28, 2015
Updated December 15, 2017

Regional Collaboration

The plan supports **collaboration for a healthy environment, thriving communities, and opportunities for all**, including coordination with other jurisdictions and agencies, tribes, ports, military installations, and adjacent regions.

Policies and programs should:

| Support regional collaboration | Page/Policy Reference |
|---|-----------------------|
| <ul style="list-style-type: none"> ✓ Include a statement about how the plan relates to countywide planning policies, VISION 2050, and planning requirements of the Growth Management Act. | |
| <ul style="list-style-type: none"> Ⓢ Coordinate with other jurisdictions, agencies, tribes, ports, military installations, special purpose districts, and adjacent regions (RCW 36.70A.070)(a)(iv), MPP-RC-1, RC-4-5) | |
| <ul style="list-style-type: none"> Ⓢ Prioritize services and access to opportunity for people of color, people with low incomes, and historically underserved communities to ensure all people can attain the resources and opportunities to improve quality of life and address need (MPP-RC-2) | |
| <ul style="list-style-type: none"> Ⓢ Address land use, transportation, and housing opportunities and challenges related to military installations, when applicable (MPP-RC-6) | |
| <ul style="list-style-type: none"> ✓ Prioritize investments in centers, including regional centers, countywide centers, high-capacity transit areas with a station area plan, and other local centers (MPP-RC-9) | |
| <ul style="list-style-type: none"> ✓ Explore funding sources, changes to regulatory, pricing, taxing, and expenditure practices, and other fiscal tools to meet infrastructure and other needs (MPP-RC-10-11, RC-Action-7, RC-Action-9) | |

Additional comments on Regional Collaboration or additional documents to share (optional): _____



VISION 2050 Consistency Tools

Tools should be used throughout the planning process

VISION Consistency Tool for Local Comprehensive Plans

Note: The tool shown here is for illustrative purposes. To fill out the tool, visit www.psrc.org/our-work/plan-review.

This tool is intended to help cities and counties integrate VISION 2050 into their local comprehensive plans. VISION 2050's multicounty planning policies serve as the adopted regional guidelines and principles required in state law to guide both regional and local planning. The tool also identifies transportation planning requirements of the Growth Management Act (GMA). The tool may be used at various times in the local planning process:

- Plan Update Scoping:** Use checklist items as guidance for scoping the extent of plan element updates. New or expanded issue areas in VISION 2050 are identified to support this process.
- Draft Plan Review:** Submit draft plans to PSRC prior to Planning Commission and Council review. Completing and submitting this tool and providing early drafts to PSRC help identify potential consistency issues early in the process.
- Certification Review:** Along with the adopted plan, the tool will assist in PSRC's review of the plan. Demonstrating inclusion of the necessary information in the checklist helps facilitate certification. *Note: The PSRC Executive Board is the final decision-making body for plan certification.*
- Regional Collaboration:** The tool provides cities and counties an opportunity to highlight supports sharing of best practices across the region and benefits jurisdictions as they

Resources

- Regional Plans: [VISION 2050](#), [Regional Transportation Plan](#), and [Regional Economic Development Plan](#)
- [VISION 2040 to VISION 2050](#) – summary of what changed in VISION 2050
- [VISION 2050 Policy Matrix](#) – a comparison of multicounty planning policies and a comparison of local policies to the regional policies
- [Plan Review Manual webpage](#) – access more information about the review and certification process and other resources by policy area. See previous [certification reports](#) for areas that have been reviewed.

Regional Collaboration

The plan supports **collaboration for a healthy environment, thriving communities, and opportunities for all**, including coordination with other jurisdictions and agencies, tribes, ports, military installations, and adjacent regions.

Policies and programs should:

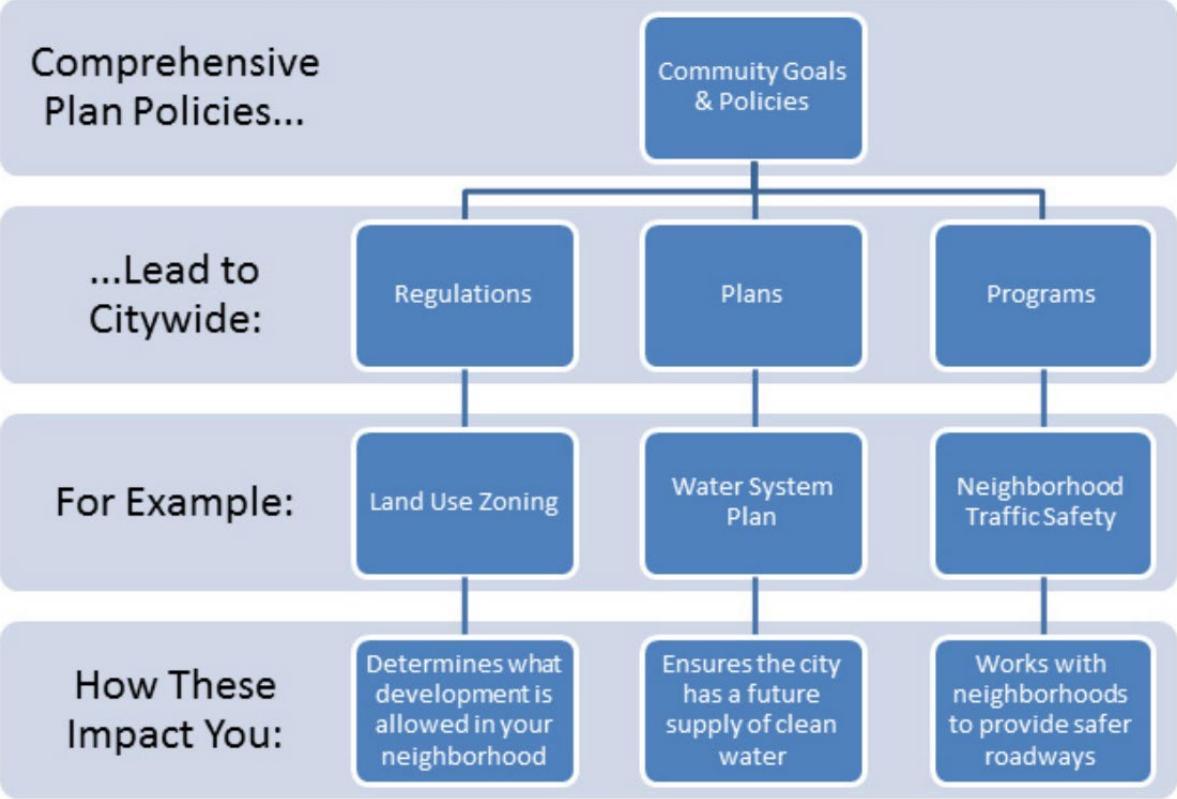
| Support regional collaboration | Page/Policy Reference |
|--|-----------------------|
| <ul style="list-style-type: none"> ✓ Include a statement about regional collaboration and planning requirements | |
| <ul style="list-style-type: none"> ⊗ Coordinate with other jurisdictions, agencies, tribes, ports, military installations, special purpose districts, and adjacent regions (RCW 36.70A.070(6)(a)(v), MPP-RC-1, RC-4-5) | |
| <ul style="list-style-type: none"> ⊗ Prioritize services and access to opportunity for people of color, people with low incomes, and historically underserved communities to ensure all people can attain the resources and opportunities to improve quality of life and address past inequities (MPP-RC-2) | |
| <ul style="list-style-type: none"> ⊗ Address land use, transportation, and housing opportunities and challenges related to military installations, when applicable (MPP-RC-6) | |
| <ul style="list-style-type: none"> ✓ Prioritize investments in centers, including regional centers, countywide centers, high-capacity transit areas with a station area plan, and other local centers (MPP-RC-8-9) | |
| <ul style="list-style-type: none"> ✓ Explore funding sources, changes to regulatory, pricing, taxing, and expenditure practices, and other fiscal tools to meet infrastructure and other needs (MPP-RC-10-11, RC-Action-7, RC-Action-9) | |

Icons show new or expanded focus areas

Additional comments on Regional Collaboration or additional documents to share [optional]: _____



Comprehensive plan basics



Planning Guidance by VISION Policy Area

Regional Collaboration

See Packet Pages 12-13

- Prioritize access to opportunity to address past inequities

Environment, Climate Change

- Prioritize reduction of impacts to vulnerable populations

Growth + Development Patterns

See Packet Page 14-19

- Inclusive engagement
- Health disparities

Housing

See Packet Pages 20-23

- Residential displacement

Economy

- Commercial displacement, barriers for economically disadvantaged communities

Transportation

- Mobility choices, racial and social equity as a core objective

Public Services

- Equitable access to services



Policy by chapter - Equity-related items from the comp plan checklist

- Background
- Highlight external planning resources
- Local examples
- Relevant data resources

Highlight other interesting planning work, especially outside the region



Previous EAC Meeting Feedback

- Importance of community representation and hearing from people often excluded from the planning process
- Resources to make it straightforward to center equity in planning, and the value of best practices and case studies.
- Equity beyond comprehensive planning, including transit planning



Housing Element and HB 1220

Bill updated housing element requirements and called for identifying:

- Areas of high displacement risk
- Local policies and regulations that result in racially disparate impacts, displacement, and exclusion in housing
- Policies and regulations to address and begin to undo racially disparate impacts, displacement, and exclusion in housing caused by local policies, plans, and actions

WA Department of Commerce working on guidance, rulemaking



Example: Residential Displacement

Identify potential physical, economic, and cultural displacement of low-income households and marginalized populations and work with communities to develop anti-displacement strategies in when planning for growth (MPP-H-12, H-Action-6)

- Background
- Highlight planning resources
- Local examples
- Relevant data resources



Example: Residential Displacement

See Packet
Page 20

Planning Resources (examples):

- PSRC Housing Innovations Program: [Increase Neighborhood Stability by Mitigating Residential Displacement](#)
- [Local Housing Solutions](#)

The screenshot shows the homepage of the Local Housing Solutions website. At the top, the logo reads "Local Housing Solutions" with the tagline "To enhance local affordability. To foster inclusive communities." Below the logo is a navigation bar with links for "HOUSING 101", "BUILD A STRATEGY", "EXPLORE POLICIES", "HOUSING DATA", "CASE STUDIES", and "HOUSING SOLUTIONS LAB". A search bar is also present. The main content area features a large image of a house with an American flag and the text: "Local Housing Solutions is a one-stop resource for comprehensive, balanced, and equitable local housing strategies." Below this is a "Get Started" button. At the bottom, there are four circular icons with corresponding text: a video icon for "Learn the Basics of Housing Affordability", a house icon for "Build a Housing Strategy", a puzzle piece icon for "Choose an Issue You Care About", and a document icon for "Select a Policy You Want to Learn About".

The infographic is titled "Increase Neighborhood Stability by Mitigating Residential Displacement". It features a photograph of a modern residential building. The text is organized into several sections: "Objective" (Create opportunities for residents to stay in their neighborhoods as housing markets change.), "WHAT IS DISPLACEMENT?" (Displacement occurs when housing or neighborhood conditions force residents to move. Displacement can be physical, when building conditions deteriorate – or economic, as costs rise. Communities of color, low-income communities, and renter neighborhoods are at a higher risk of displacement.), and "Gentrification is the process of changing the character of a neighborhood through the influx of more affluent residents and businesses. Gentrification can often be a precursor to displacement. Depending on the local and regional context, displacement may precede gentrification or the two may occur simultaneously. Several key factors drive gentrification and displacement: proximity to rail stations, jobs centers, historic housing stock, and location in a strong real estate market. Gentrification and displacement are regional issues as they are inherently linked to shifts in the regional housing and job market." A "RELATED TOOLS" list includes: Affordability covenants, Alternative homeownership models, Commercial linkage fees, Community engagement plans, Density bonuses, Direct household assistance, Foreclosure resources, Incentive zoning, Inclusionary zoning, Local housing fund, METS, Micro units and SRDs, Mixed use development, Mobile/manufactured homes, Multifamily development, Nonprofit partnerships, Preservation and rehabilitation, TDR for affordable housing, Tenant protections, and Unweaves and rezones. At the bottom right, there is a logo consisting of a hexagon divided into six colored triangles (orange, purple, green, teal, blue, and red).

Example: Residential Displacement

| Policy Example | Why this works |
|--|---|
| <p>H-124 King County shall work with partners to reduce and prevent displacement of very-low to moderate-income households from transit-oriented locations, to the extent possible; and shall strive to align affordable housing investments and transit investments in order to increase the quality of life of disinvested communities as measured by the Determinants of Equity.</p> <p>King County Comprehensive Plan</p> | <ul style="list-style-type: none">• Focus on both preventing and reducing displacement• Connects affordable housing to transit investments |
| <p>Policy 3.9B Ensure that sufficient relocation plans are in place prior to the closure of any mobile home park.</p> <p>SeaTac Comprehensive Plan</p> | <ul style="list-style-type: none">• Focus on displacement strategies for mobile home parks, which are often particularly at-risk to development pressures |

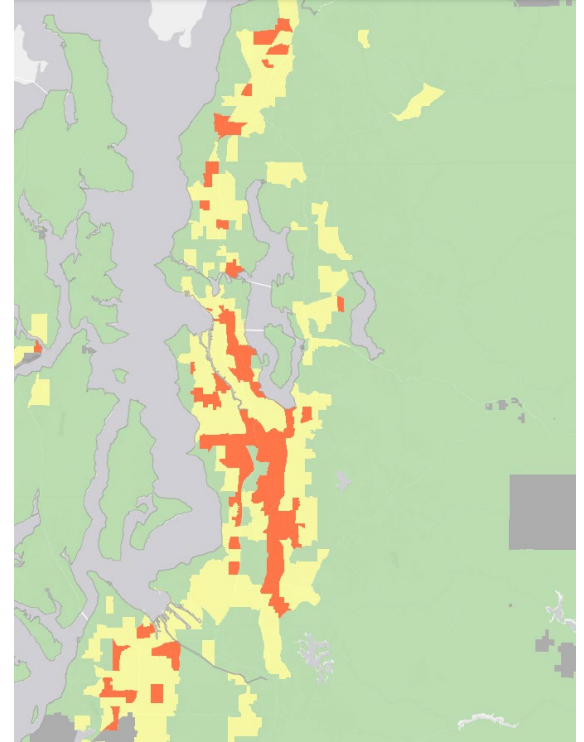


Example: Residential Displacement

Data Resources:

- PSRC Displacement Risk mapping
- Commerce Displacement Risk methodology (forthcoming)

See Packet
Page 21



Questions

The background image shows a high-angle view of a boat's deck. A large, dark fishing net is spread out across the deck, which has yellow safety lines. A person is standing on the deck near the net. The boat is moving through blue water, with white wake visible. The overall scene is bright and sunny.

- Do you have any additional feedback on preliminary sections of the Equity Planning Resources? Is additional information needed?
- Do you know of existing resources or examples we should include?

Next Steps

Phase I: Comprehensive Planning Guidance (2022)

- 1 week for committee feedback
- Draft of all sections
- Passport to 2044 webinar in November

Phase II: Additional Planning Resources (2023 & Beyond)

- Identify focus areas and timeline for additional guidance



Thank You

Liz Underwood-Bultmann, AICP
Principal Planner
LUnderwood-Bultmann@psrc.org

Erin Hogan
Associate Planner
EHogan@psrc.org

