

Equity Tracker

Updates on Development

Equity Advisory Committee
2022 October 6

Brian H. Y. Lee, Ph.D.
Program Manager

Mary Richards
Associate Planner



Puget Sound Regional Council



- **The Equity Tracker Project: Recap**
- **Recent Engagements with EAC Members**
 - Questions/comments from April EAC meeting
 - Feedback from reviews of draft webpages
- **Development Progress**
 - New PSRC website & opportunities for the Equity Tracker
 - Data preparation work
 - Research on environmental & climate-related data
- **Next Steps**

The Equity Tracker Project





Capacity Building

Learning Opportunities
Prioritizing Equity
Inclusive Procurement
Hiring and Retention



Community Engagement

Equity Advisory Committee
Anti-Displacement Organizations
Inclusive Engagement Guidance



Data and Research

Equity Analyses
Equity Tracker
Legacy of Structural Racism
Data & Analysis



Best Practices

Equity Impact Tool
Equity Planning Resources

Elements of the Equity Tracker project



Primary goals

- Measure life outcome disparities between communities: **Data**
- Track performance over time in closing equity gaps
- Publicly hold PSRC & its partners accountable

Key takeaways from peer reviews

- Foundation based on **VISION 2050**
- Systematic & rigorous evaluation of data & sources
- Uses: first info provision, then data sharing
- Provide **context** & point toward **solutions**

Recent Engagements with EAC Members



Questions/Comments from April EAC Meeting



Puget Sound Regional Council

Questions? Ask anonymously below:

- With surveys,, how are you selecting the people who get the surveys?
- Nonprofits and public housing agencies have to report to HUD and public health agencies around once a quarter on health and safety data, especially for age group of 0-6 years old (i.e., the biggest population experiencing poverty in the US). Focus on this population.
- I recommend the book Factfulness: Ten Reasons We're Wrong About the World – and Why Things Are Better Than You Think by Hans Rosling, Anna Rosling Rönnlund, Ola Rosling to guide the equity tracker work overall (University of Washington-Seattle Hans Rosling Population Health Center might be able to assist)
- How can users easily download graphs and insights from the Equity Tracker in .pdf?
- I prefer the Zoom poll to be less narrative and more multiple choice
- Can PSRC include a data set wish-list (and their qualification) to Equity Tracker? A way to also solicit users' on-going contributions. Maybe the data sets we want are out there, and we just don't know about it yet.

Reviews of Equity Tracker DRAFT webpages



- February** *EAC meeting:* Introduced Equity Tracker
Members expressed interests to:
- Learn more about **data, context, solutions**
 - **Test draft** product & provide feedback via **surveys**
- April** *EAC meeting:* Discussed **data, context, solutions**
- May** Invited members to **test draft** webpages & respond to **survey** focused on **data, context, solutions**
- July** Received 2 responses; asked small group to review
- August** New PSRC website launched, ended draft webpages
Added 4 more responses



Information organization

- Division by sections: straightforward to use, has learning curve
- Connections between data indicators & themes not always intuitive (e.g., **education** data in the **economy** theme)

Design elements

- Some font sizes could be bigger
- More use of colors to distinguish/highlight information
- Interactive “bubbles” when hovering over charts are useful
- Tabs for interactive charts could be more distinctive to see



Text content in general

- Incorporate “plain talk” to better engage with public
- Provide high-level summaries & direct users to more information if interested

Drivers of inequity & related regional policies

- Useful to see direct connections to policies
- Provide examples of how something plays out in real world
- Include info about agencies that support work in each area



Seek personal stories to complement planning/policy context

- Publish a data fact & request stories from people that relate
- Use findings from focus groups
- Conduct justice workshops to talk about lived experiences

Seek examples of practices from local jurisdictions & community organizations

- Need to be gathered over years to see impacts
- Note practices used & studied elsewhere
- Leverage social media connections with other agencies

Development Progress





Will use website designers for the Equity Tracker

- EAC feedback on draft webpages incorporated into website design project requirements
- Improve accessibility & general user experiences
- Develop template for other data monitoring tools (e.g., Regional Transportation Plan monitoring) to enhance cohesion across regional resources

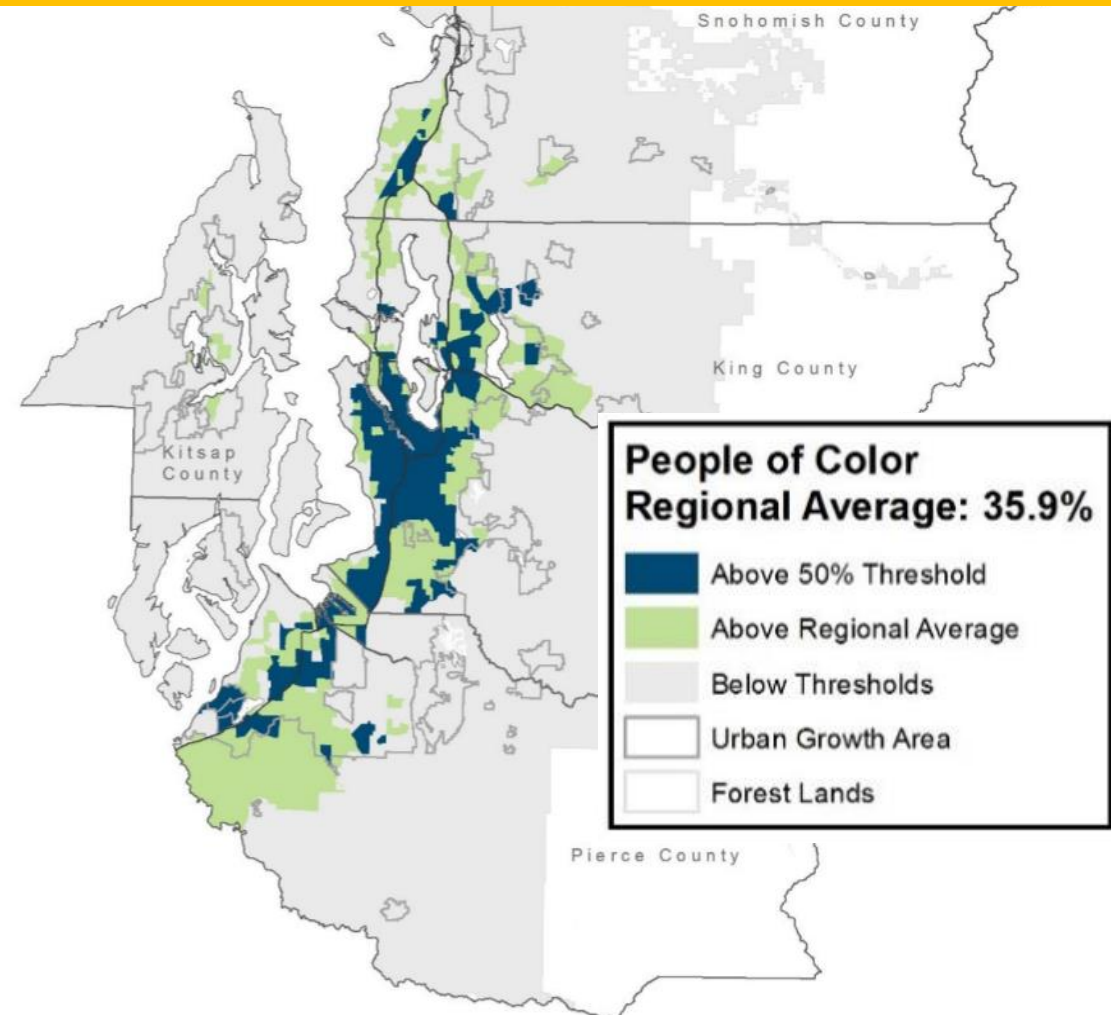
Data preparation work



Person-based & place-based measures (discussed in April)

- **Person-based**: data of people with different characteristics (e.g., income of People of Color)
- **Place-based**: data of people in different places/neighborhoods (e.g., income of people in areas with high shares of People of Color)

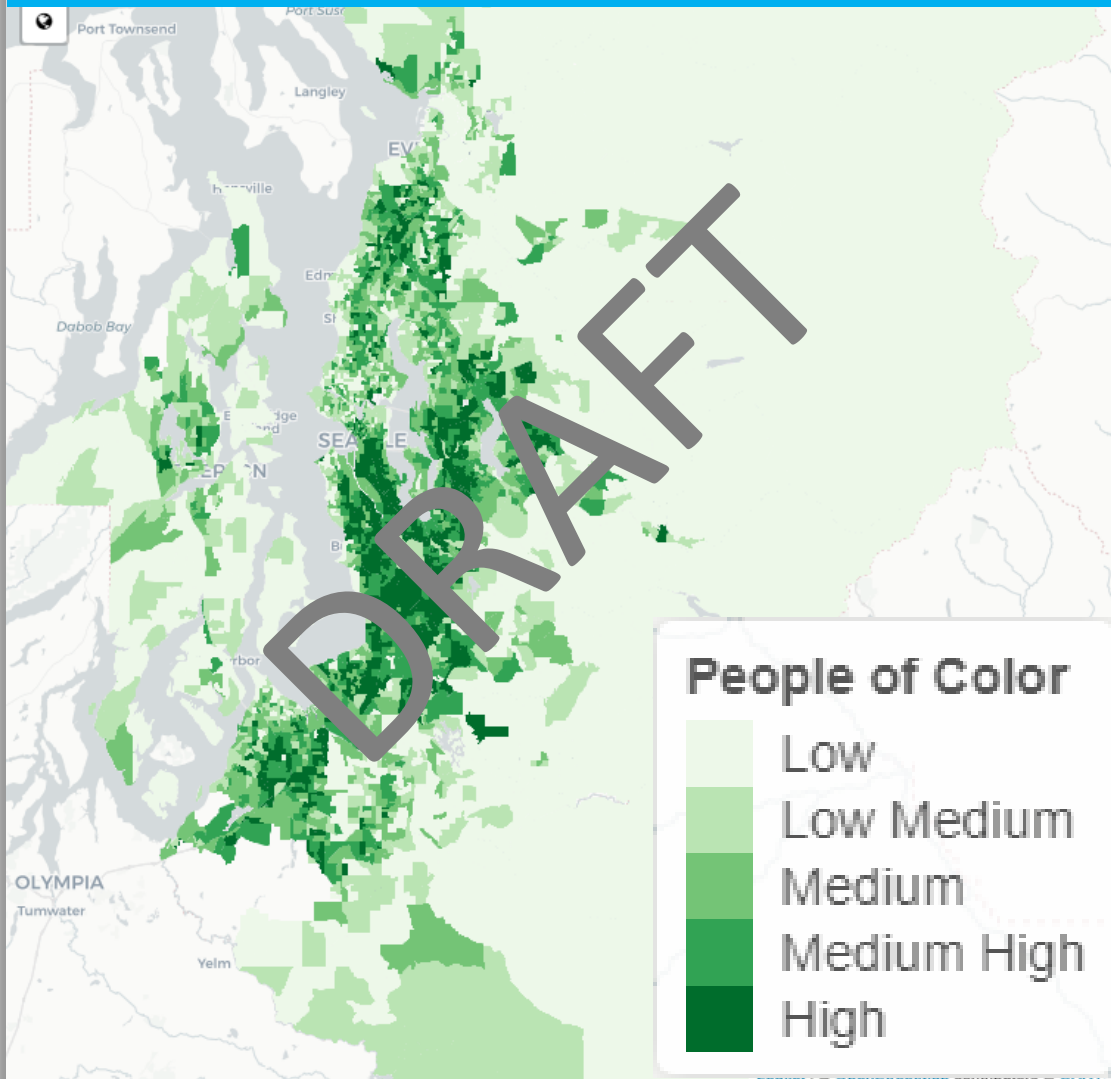
Example of place-based approach:
“Equity Focus Area” for People of Color
PSRC 2022-2050 Regional Transportation Plan



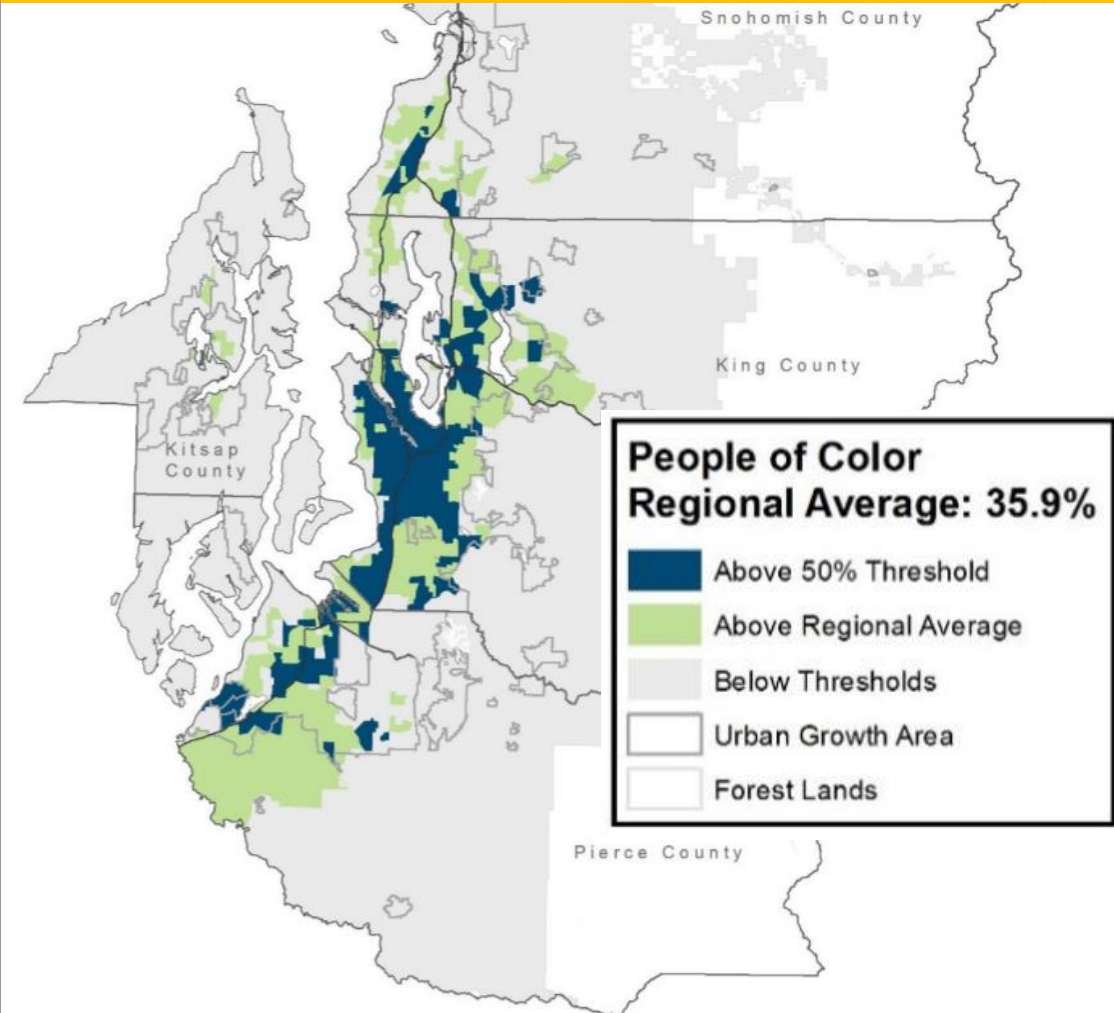
Data preparation work



Refined place-based approach (DRAFT): Relative Shares of People of Color



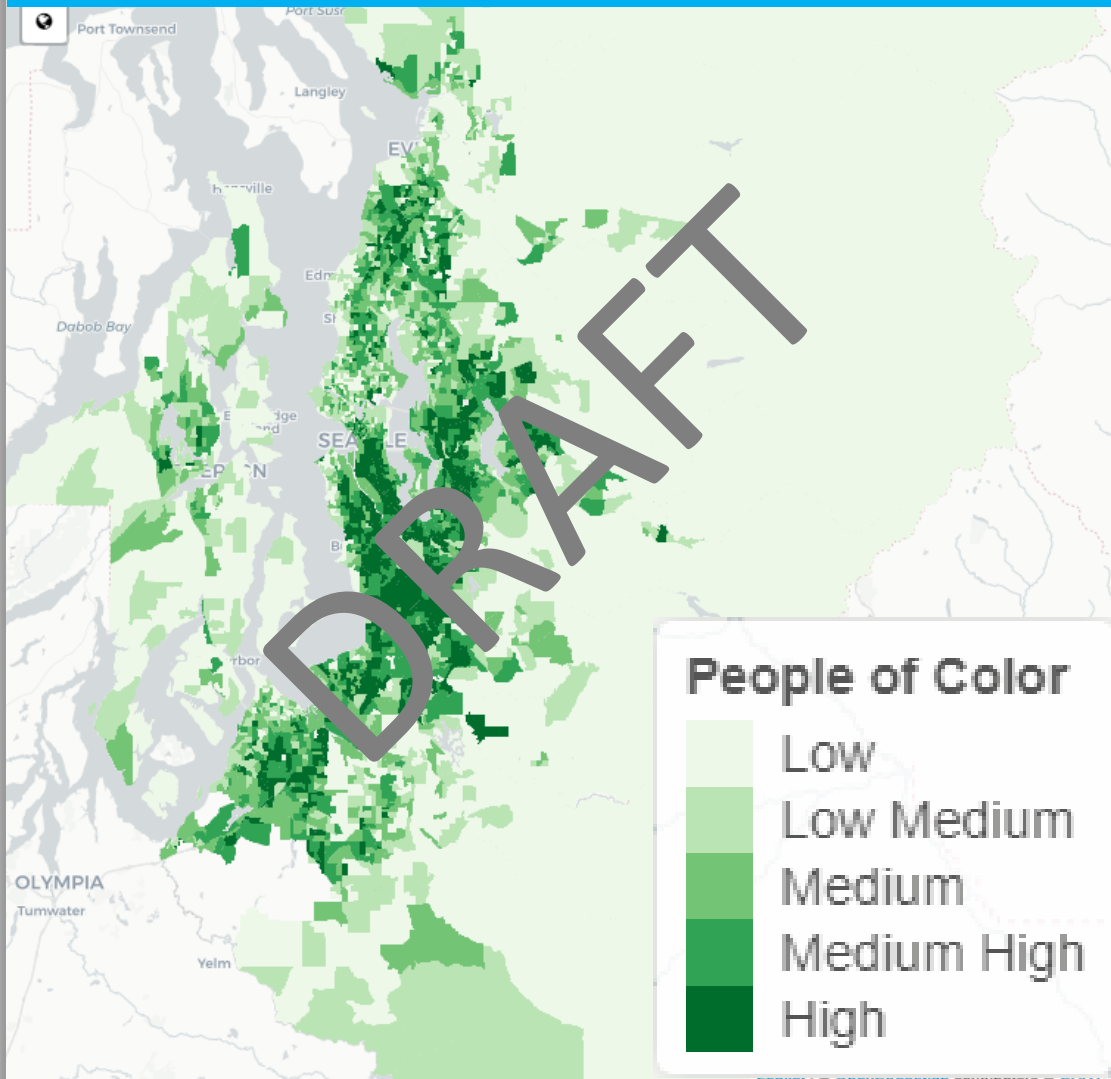
Example of place-based approach: “Equity Focus Area” for People of Color *PSRC 2022-2050 Regional Transportation Plan*



Data preparation work



Refined place-based approach (DRAFT): Relative Shares of People of Color



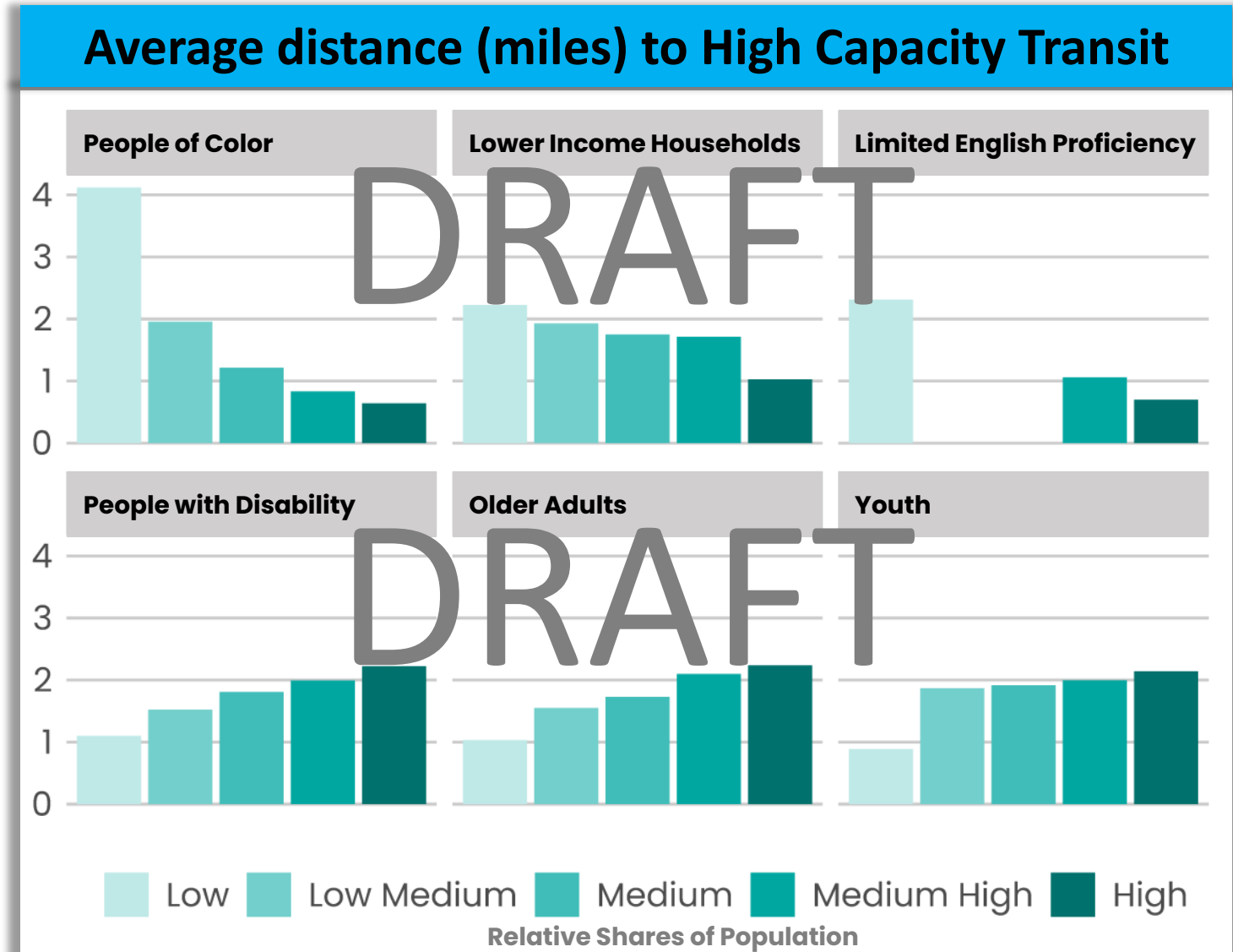
Refining person-based measures

- **Census block group data:** smaller area, can better support summaries at different levels
- **Relative shares:** areas put into 5 groups (quintiles), from lowest 20% to highest 20%
 - For example:
 - Low = areas with lowest shares of People of Color
 - High = areas with highest shares of People of Color



Draft example output

- Shows transit access for areas with varying shares of population
- For example:
 - Areas with highest shares of People of Color have good transit access compared to areas with lower shares





Research on environmental and climate-related data

- Look beyond traditional topics & sources (e.g., FEMA 100-year flood data)
- Consider latest developments in science & social implications
- Explore a variety of data sources & data sets
- Topics include air quality, drought, flood, heat, wildfire, and their impacts on different communities

Next steps





- **Data preparation & research work:** *on-going*
- **Website template development:** *next two months*
- **Next version of Equity Tracker webpages:** *anticipated in winter*

Thank you!

Brian H. Y. Lee, Ph.D.
Program Manager
blee@psrc.org

Mary Richards
Associate Planner
mrichards@psrc.org



Puget Sound Regional Council

