

RTP Implementation Update

Bicycle Pedestrian Advisory Committee – September 13, 2022





RTP Implementation Update

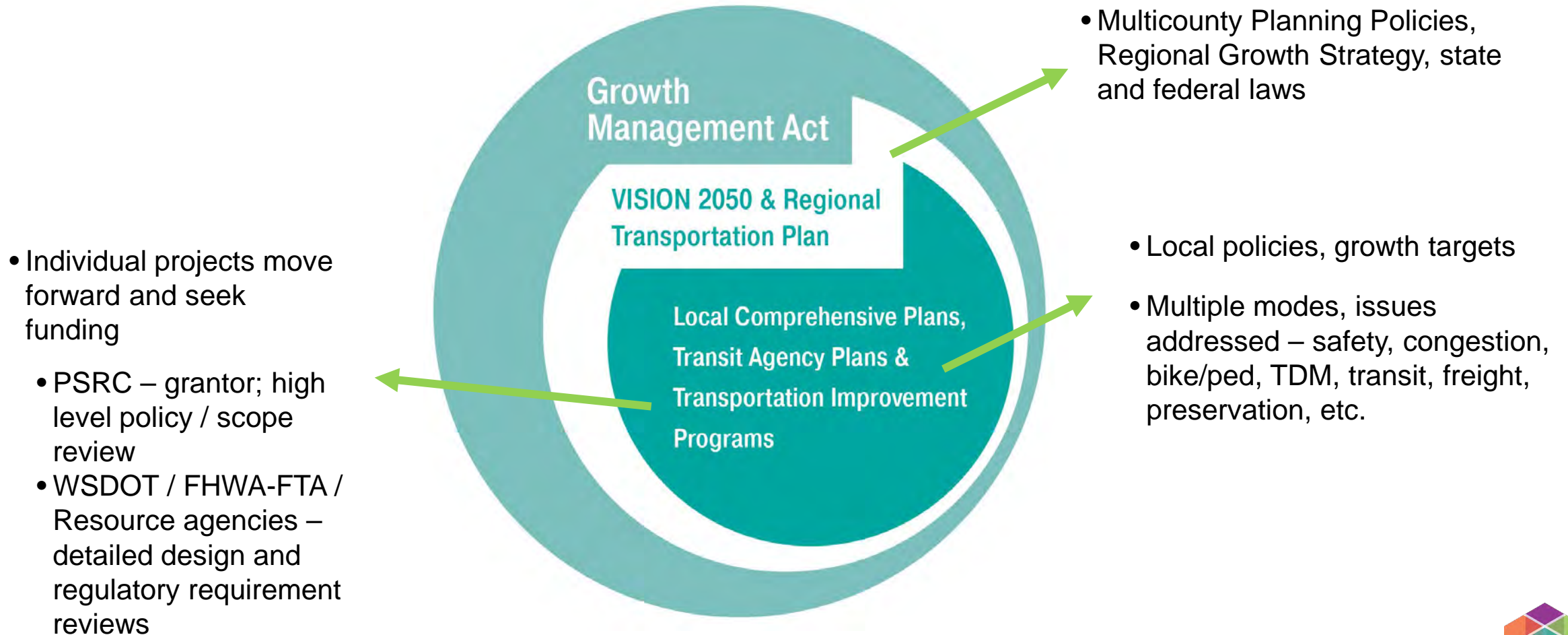
Topics covered in today's presentation:

- Update on 2022-2050 RTP implementation
- Review bike/ped work program items
- Next steps for work program



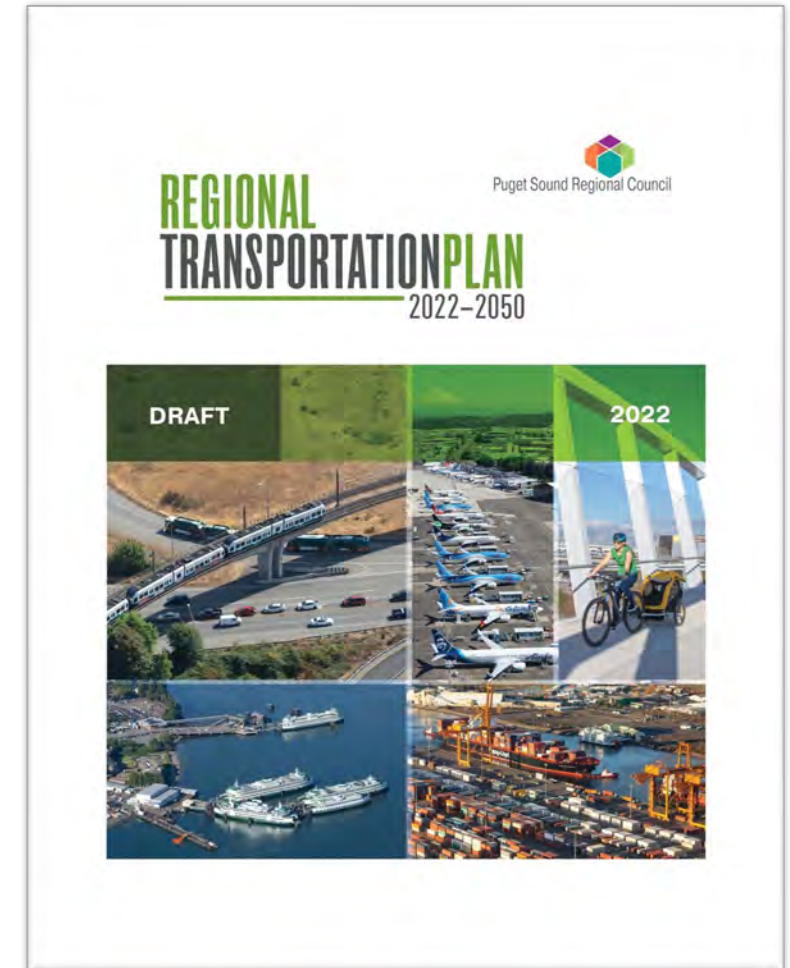
RTP Background

Local policy and project implementation



2022-2050 Regional Transportation Plan Update

- In May 2022, the General Assembly **adopted the 2022-2050 RTP**.
- Since adoption, PSRC staff have been working with the TPB and Executive Steering Committee on reviewing **implementation action items**.
- The preliminary feedback was incorporated into **draft priorities and timelines** for continuing and new work program items.



Bicycle & Pedestrian Travel in the RTP (1)

- The **bicycle and pedestrian section** of the RTP includes:
 - Data on regional patterns for bike/ped travel
 - Analysis of existing conditions for bike/ped facilities
 - Assessment of needs and gaps
 - Highlights of current and planned projects in region
 - Forecasted travel patterns
- **Transportation System Inventory** (Appendix A) includes further detail on data and analysis from main bike/ped section.



Bicycle & Pedestrian Travel in the RTP (2)

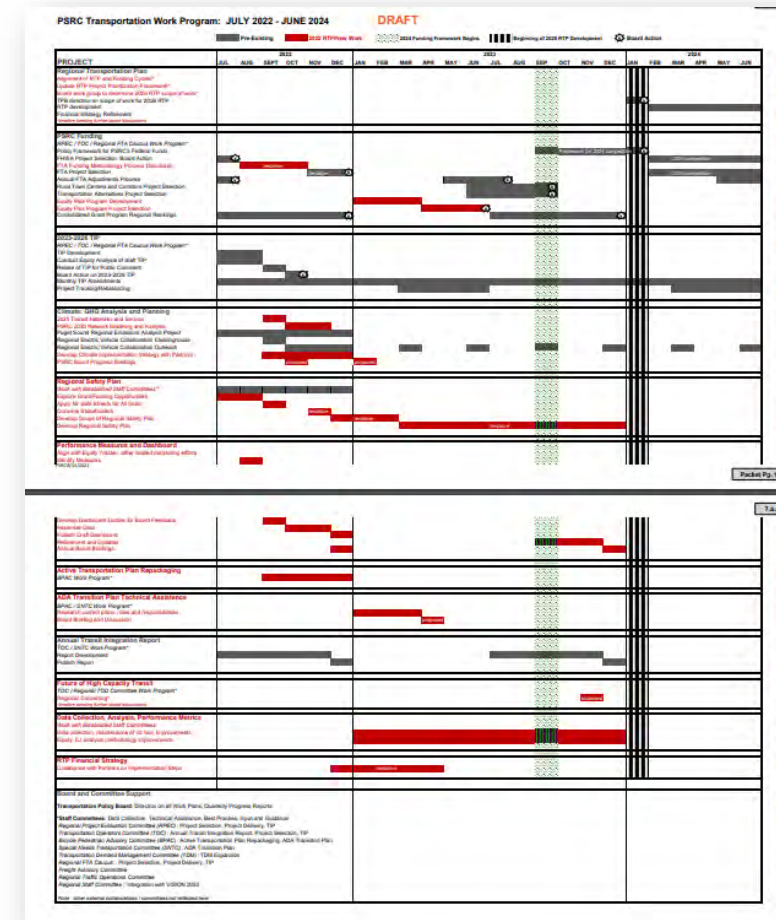
- **Other relevant plan sections include:**
 - Access to transit
 - Safety
 - Specialized transportation
 - Streets and highways
 - Shared mobility
 - Equity
 - Health
 - Mobility



Bicycle/Pedestrian RTP Work Program Items

Bicycle- and pedestrian-related **work program items** arising from the RTP:

- ✓ Active Transportation Plan repackaging
- ✓ ADA Transition Plan Technical Assistance
- ✓ Bicycle and Pedestrian Data
- ✓ Access to Transit



Work Program Next Steps

- In upcoming meetings in 2022 and early 2023, the BPAC will be asked to **provide technical guidance** on various bicycle and pedestrian work program items, including:
 - Feedback on **Active Transportation Plan repackaging**
 - Preparation for bicycle and pedestrian **facility inventory update**
 - Input on definitions of **“All Ages and Abilities”** facilities

