

2022 Project Selection Recommendations

Executive Board
July 28, 2022



Photo: Everett, WA



Today's Presentation

- Overview of PSRC's federal funds and the project selection process
- Highlights of recommended project outcomes
- Example projects in each of the four counties
- Highlights of the strengthened criteria – safety, equity
- Next steps
- Action requested



PSRC Funds

Under the FAST Act, PSRC has received ~\$290 Million annually in federal transportation funds:

Federal Highway Administration (FHWA) ~\$90m

- Two funding programs, specific eligibility requirements for each

Federal Transit Administration (FTA) ~\$200m

- Four funding programs, specific eligibility requirements for each

❖ The 2022 project selection process is distributing FFY 2025-2026 FHWA funds

- the distribution of FTA funds is on hold pending further board discussions



Project Selection Process Overview

- Project Selection Task Force – extended set of meetings, April to November 2021
- Policy Framework adopted in January 2022
 - *Based on VISION 2050 policies*
 - *Provides Board direction for project selection*
 - *Detailed policies and procedures for conducting the process*
 - *Strengthened safety, equity criteria; set-aside for a future Equity Pilot Program*
- Call for Projects released in February
- Staff committees prepared project recommendations May-June 2022



Project Selection – Policy Review

Policy Framework and evaluation criteria based on *VISION 2050* policies

- Addresses:
 - ✓ Support for regional and local centers
 - ✓ Mobility, accessibility and circulation
 - ✓ Active transportation
 - ✓ Safety
 - ✓ Equity
 - ✓ Climate and air quality
 - ✓ Project readiness

Set-asides include:

- *bicycle / pedestrian*
- *preservation*
- *Rural Town Centers and Corridors program*



Project Selection Process – FHWA Funds

Shared process - Regional and Countywide competitions

Regional competition

- \$64 million available
- 31 project submitted totaling \$159 million
- 12 projects recommended

Countywide competitions

- \$123 million available
- 167 projects submitted across all four counties
- Total request of over \$334 million
- 71 projects recommended



Project Outcomes

Highlights of the 83 recommended projects:

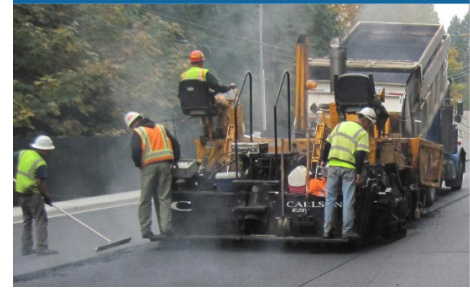
- 39 projects improve designated freight facilities
- 40 projects improve facilities serving transit routes
- 15 projects improve intersections
- 4 projects provide zero emission vehicles or infrastructure



Project Outcomes

Highlights of the 83 recommended projects:

- 44 projects include bicycle and pedestrian elements
- 29 projects address preservation and maintenance
- 73 projects are located / providing improvements in one or more equity focus areas
 - 57 projects in areas with higher proportions of people of color and/or people of low income, specifically



Project Outcomes

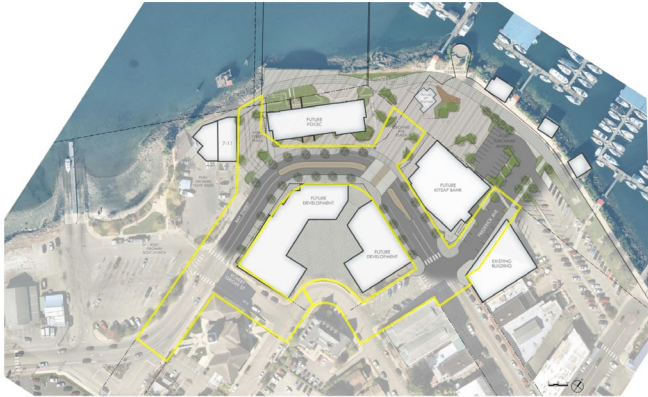
- Of the 44 projects including bicycle and pedestrian elements:
 - 20 provide separated facilities (multiuse paths, protected or separated bike lanes)
 - 28 provide sidewalks
 - 15 provide bicycle lanes
 - 17 provide other facilities or amenities, such as enhanced pedestrian crossings



Project Examples

King County:

Kent's "Meet Me on Meeker" project – multimodal promenade, two-way separated bikeway and sidewalk with buffer, roundabout, other amenities and safety features



BAY STREET & ADJACENT IMPROVEMENTS

date: April 2022

Kitsap County:

Port Orchard's "SR 166 / Bay Street Improvements / Preservation" project – waterfront area redevelopment with raised street elevation and crosswalk, reconstructed travel lanes, new street lighting, utility improvements, etc.

Project Examples



Pierce County:

Pierce County’s “Transportation Demand Management” project – outreach, materials and programs to support employers and communities between DuPont and Tacoma

TDM GRANT NEEDS

WHAT CAN BE ACCOMPLISHED:

DESIRED OUTCOMES

- Reduce commute trips along the I-5 Corridor.
- Reduce greenhouse gases.
- Strengthen countywide mobility by encouraging individuals to take transit, share the ride, walk, or bike to destinations.

PIERCE TRIPS SERVICES

Transit trip planning tools, RideshareOnline.com, an Emergency Ride Home program, campaigns encouraging sustainable modes, and online information.

OTHER PROJECT SUPPORT TOOLS

- Enhanced online presence with website redesign and community activations
- Expansion of WSU’s Teleworker Certificate program into Pierce County

PROJECT DESCRIPTION

- Continuing and developing Pierce Trips commuter services
- Provide outreach and education programs to employers and the community.
- Foster business and economic development agency partnerships

WORKING TOGETHER FOR BETTER MOBILITY

PierceTDM.com
Leading people on the way!



Snohomish County:

Community Transit’s “Swift Gold Line Zero Emission Expansion Buses” project – 13 zero emission buses to operate on the fourth line of Community Transit’s Bus Rapid Transit network between Smokey Point Transit Center and Everett Station

Safety Highlights

Criteria strengthened in 2022:

- In addition to “addressing safety and security,” also –
 - protection of vulnerable users
 - reducing reliance on enforcement
 - designing for decreased speeds
 - reflecting adopted safety policies



Safety Highlights

For reference, FHWA's Safe Systems Approach identifies proven countermeasures, e.g.:

- Mitigating roadway departure – rumble strips, curve improvements, edge lines, median barriers
- Intersection improvements – access management, turn lanes, conflict reductions, roundabouts, signal adjustments
- Bicycle / pedestrian improvements – visibility enhancements, dedicated lanes, flashing beacons, leading signal intervals, medians, road diets, walkways
- Other – lighting, pavement components, safety plans



Safety Highlights

Highlights of the 83 recommended projects:

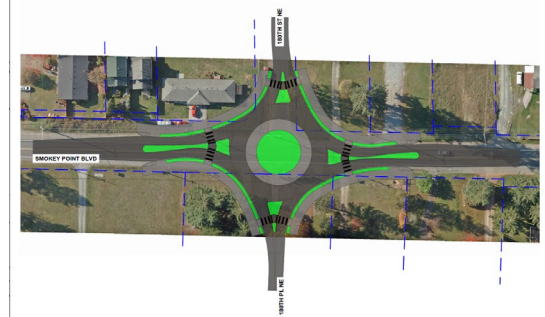
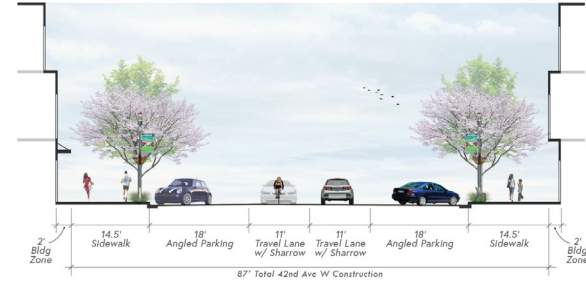
- Approximately 1/3 of the recommended projects are related to preservation, transportation demand management or equipment
- Of the remaining projects, all but one includes at least one of the FHWA proven countermeasures
 - 77% include two or more countermeasures
 - The one remaining project addresses safety through adaptive signal systems and managing traffic flow / reducing vehicle congestion



Safety Highlights

Key examples of safety features included in recommended projects:

- Combination of walkways, bike lanes and lighting
- Roundabouts and other reductions of left turn conflicts at intersections
- Crosswalk visibility enhancements and rectangular rapid flashing beacons
- Provision of medians, pedestrian refuge islands



Equity Highlights

Stand-alone criterion with increased point values

Expanded elements:

- Additional focus groups: People with limited English proficiency, immigrants and refugees and transit dependent populations
- Disparities / gaps in the transportation system
- How community outreach will / has influenced project development
- Mitigation strategies in place for potential displacement

Expanded guidance and resources



Equity Highlights

- **High Scoring Projects: Disparities / Gaps**
- **Targeting disparities / gaps experienced by marginalized communities**
 - Creating non-motorized options, addressing missing links, building infill stations, electrifying buses, etc.
 - Increasing transit reliability, reducing travel time
 - Improving access to opportunity (e.g., employment)
 - Reducing emissions and improving health outcomes



Equity Highlights

- **High Scoring Projects: Outreach**
- **Outreach to marginalized communities clearly influenced the project**
 - Advisory groups, focus groups, CBOs, religious organizations, Tribes, etc.
 - Fairs, festivals, farmer's markets, public meetings, workshops, open houses, phone calls, surveys, etc.
 - Interpreters and translated materials
 - Staff (e.g., engineers) participate in engagement



Equity Highlights

- **High Scoring Projects: Displacement**
- **Considered area's level of displacement risk and jurisdictions anti-displacement strategies**
 - Projects located in areas of low displacement risk
 - Projects located areas of high / medium risk with effective displacement mitigation strategies
 - Regardless of if project responsible for displacement or not, increasing likelihood marginalized communities remain in these areas and benefit from transportation investment



Equity Pilot Program

New set-aside for an Equity Pilot Program

- Funded with 5% set-aside of FHWA funds (\$6 million)
- Work with the EAC on development of the program from the beginning
- Share feedback on current equity criteria for next process
- *Anticipate beginning work with EAC in January 2023*

Next Steps

July 2022 – Board action on project recommendations

September 2022 – Public comment on Draft 2023-2026 Regional Transportation Improvement Program (TIP)

October 2022 – Board adoption of 2023-2026 Regional TIP

January 2022 – Federal approval of TIP



Recommended Action

The Executive Board is asked to:

Approve the projects recommended for PSRC's FHWA funds as identified in Attachments A and B, including the prioritized contingency lists of projects should additional funds become available prior to the next project selection process

