



Puget Sound Regional Council

Passport to 2044 Workshop Series

Growth Management Policy Board | September 1, 2022



PSRC's Plan Review Process

2021



Plan review manual & consistency tool

June plan review webinar

2022/2023



Plan review survey

Workshops with Commerce & MRSC

Releasing new resources and data products

2024



Review plans!



Passport to 2044 Series



Passport to 2044 Series



[Comprehensive Planning](#) – June 15

[Climate](#) – August 17

Economic Development – September 7

Transportation – October 18

Housing – October 26

Equity – November 8

Tribal Coordination – TBD

Planning for Critical Areas – TBD

Elected Officials and Planning Commissions – TBD

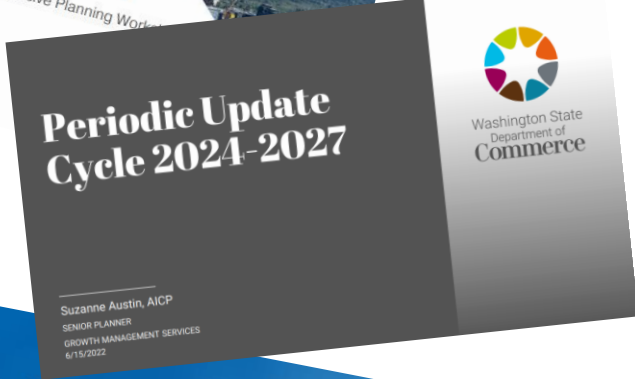


June 2022 Kick-Off

Co-hosted by PSRC, WA State Department of Commerce and MRSC

Close to **300 participants**: planners, consultants, local staff

Presentations and Recording available on [PSRC website](#)



Series Explore Sessions



Topic specific sessions offer a **deep dive on plan elements and focus areas**

Presenters include WA State Department of Commerce, MRSC, member jurisdictions, and more!

More information coming soon for future sessions



PSRC Guidance and Resources



Available Now:

- [Conservation Toolkit](#)
- [Growth Target Guidance](#)
- [Economic Development Element Guide](#)
- [Tribal Coordination](#)
- [Community Data Profiles](#)
- [Equitable Engagement](#)
- [Climate Change Guidance](#) (draft)
- TOD + Centers Guidance (draft)

Upcoming this Fall:

- Growth Outreach Toolkit
- Housing Guidance
- Equity Planning Resources
- Land Use Vision Forecast
- Multimodal Concurrency [update]

VISION 2050 Planning Resources

PSRC develops guidance, research, and data products to support local planning and advance VISION 2050. Browse resources below by policy topic area.



Regional Plans

- > [VISION 2050](#)
- > [Regional Transportation Plan](#)
- > [Regional Economic Strategy](#)

Guidance by Policy Topic Area (from PSRC and partner agencies)

Regional Collaboration and Equity	>
Regional Growth Strategy	>
Environment	>
Climate Change	>
Development Patterns: Centers and Transit-Focused Growth	>

[VISION 2050 Planning Resources](#)

[Previous Certification Reports](#)



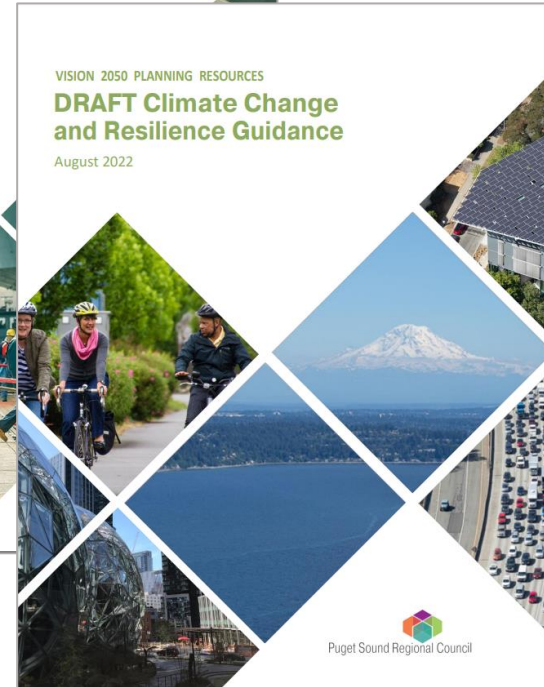
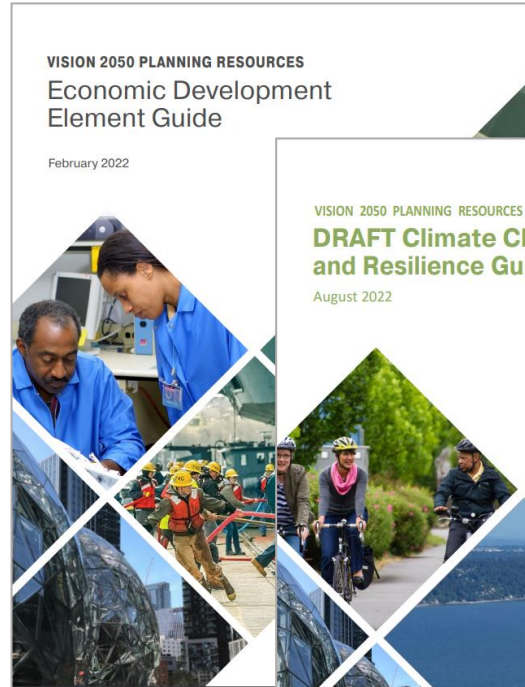
Element Guides

Economic Development Element Guide

- Provides technical assistance for developing an economic development element
- Includes common data metrics and policy examples

Draft Climate Change and Resilience Guidance

- Provides information on emission reduction and resilience activities



Guidance Documents

Equitable Engagement

- Includes strategies, resources and considerations
- Focuses on techniques for reaching historically impacted communities

Coordination with Tribes

- Provides guidance on conducting meaningful consultation with Tribes
- Includes best practices from the region

Puget Sound Regional Council
VISION 2050 Planning Resources
Equitable Engagement for Comprehensive Plans
JULY 2022

The Growth Management Act establishes a baseline for public participation as a component of the planning process. However, many traditional methods and approaches do not facilitate effective engagement with historically impacted communities.

Traditional outreach methods, such as online open houses, public hearings, and online surveys, often only reach a subset of community members. These community members are typically those who are already familiar with the local planning process and have the time to stay up to date with what is happening. As a result, many planning processes fail to adequately consider the perspectives of marginalized communities most impacted by planning decisions. This can lead to additional burdens on impacted communities, exacerbating disparities in the region.

VISION 2050 calls for PSRC to develop a regional equity strategy with tools, resources and strategies for centering equity, including best practices for ensuring equitable engagement. This guide considers new strategies and practices to build a foundation for comprehensive planning efforts.

This guide includes four recommendations for conducting equitable engagement: identify the most impacted, develop public engagement goals and outcomes, carry out engagement, and questions to consider. This guide provides resources and strategies for these strategies.

VISION 2050 Planning Resources | Equitable Engagement for Comprehensive Plans

Puget Sound Regional Council
VISION 2050 Planning Resources
Coordination with Tribes in Comprehensive Planning

Tribes of the Salish Sea

The central Puget Sound region is a part of a larger area that has been the traditional ancestral territory of the Coast Salish peoples. The Coast Salish Tribes have lived here since time immemorial and while each Tribe is unique, all share in having a deep historical connection and legacy of respect for the land and natural resources. These sovereign Tribal Nations enrich the region through environmental stewardship, cultural heritage, and economic development, and collaborate with local governments to shape the region's future.

Under treaties signed with the United States in the 1850s, many Tribes in the region ceded most of the state of Washington, but in exchange reserved fishing and hunting rights including off-reservation rights to fish in all usual and accustomed fishing grounds and the right to hunt and gather on open and unclaimed lands.

PSRC recognizes and respects the full sovereignty of each Tribe and its traditional lands located within the jurisdictional boundaries of PSRC members.¹ By law, Tribal sovereignty must be observed and protected. As sovereign nations, each Tribe has its own form of government, constitution or charter, laws, and planning processes.

¹VISION 2050 aligns with the principles of government-to-government relationships stated in the Washington Centennial Accord of 1989, and in the Washington State administrative rule (May 2019) governing prior and informed consent and consultation for any policy, plans, projects, programs, or actions that directly and tangibly affect Indian Tribes' sovereignty and treaty rights.

VISION 2050 Planning Resources | Coordination with Tribes in Comprehensive Planning



Community Profiles

- Tool to explore data by jurisdictions
- Includes measures on people, housing, jobs and transportation



Puget Sound Regional Council

Select your Community:
Lynnwood

Select American Community Survey Data:
2016-2020 ACS Data

Population: 38,500
People of Color: 46.4%
Median Age: 40.2 years
People with a Disability: 14.2%
Median HH Income: \$62,900
HH Size: 2.59 people per household
Home Ownership: 53%
Unemployment Rate: 3.9%
Travel Time to Work: 31.4 minutes

Regional Definitions:
Regional Geography: Core Cities
Airport Affected Community: No

[Download Data Profiles in Excel Format](#)

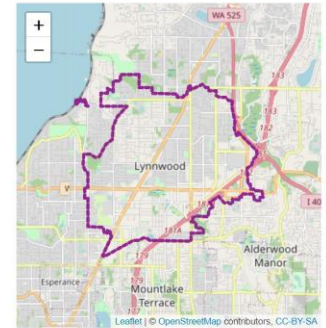


Community Profiles

As a State Data Center for the central Puget Sound region, PSRC keeps a complete inventory of data released from the U.S. Census Bureau. Cities and counties use it to track the well-being of children, families, and the elderly as well as to determine where to locate new public facilities. This portal includes demographic profiles on a variety of topics for all cities and towns in the PSRC region.

The data on this dashboard is a snapshot of the information that is available from the US Census Bureau. In order to view data for all the cities and towns in the Puget Sound region, we are limited to using American Community Survey (ACS) 5 year data. For this reason, you will only find two non-overlapping sets of data on this dashboard. By only including non-overlapping data, users can analyze the data for changing trends. The data on this dashboard is divided into five categories:

- 👤 People Measures
- 🏠 Household & Housing Measures
- 💼 Job & Income Measures
- 🚗 Transportation Measures
- 🔧 Transportation Projects



Click on the icon at the top of the page that corresponds to the metrics that you are interested in and you will get access to those measures. If you have any questions about the data or are curious what else we might have, please [click here](#) and we will be happy to help.



New! Newsletter

Sign up for PSRC's
Comprehensive
Planning Newsletter

@

[http://eepurl.com/h](http://eepurl.com/hQnYmj)

[QnYmj](http://eepurl.com/hQnYmj)



Welcome to PSRC's comprehensive planning newsletter, highlighting information on resources for local plan updates and the plan review process!

Please forward this newsletter on to others who may be interested. *You can unsubscribe at any time from this list by clicking "unsubscribe" at the bottom of this email.*

Contact Maggie Moore at mmoore@psrc.org with suggestions, questions, or comments.

Passport to 2044 – Periodic Update Workshop on June 15

PSRC, the Washington State Department of Commerce, and MRSC are hosting an online workshop on June 15 from 9:30 a.m. – 12 p.m. on comprehensive plan updates. The workshop will officially kick-off the 2024 class of plan updates! We will cover what's new in the Growth Management Act and VISION 2050 and explore the planning issues communities are most interested in. Attendees will also have an opportunity to connect with other staff working on comprehensive plans throughout the region.

Check out the [save the date](#) and share it with others.

What's New in GMA

The 2022 Washington Legislative Session adjourned in March with some changes in the local comprehensive planning process. Below are a couple key bills from the session. Check out the Washington State Department of Commerce's recap in their [April newsletter](#).



Next Steps

Outreach and Guidance: element guides, Passport to 2044, meetings

Plan Review: draft elements, coordination with Commerce & WSDOT



Thank You

Maggie Moore
Senior Planner

MMoore@psrc.org