

Climate Program

CLIMATE PROGRAM, WA DEPT. OF COMMERCE

Sarah Fox, Program Manager;

Gary Idleburg, Mitigation Lead;

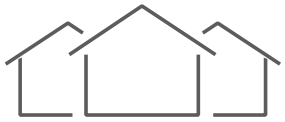
Michael Burnham, Resilience Lead

AUGUST 17, 2022



Washington State
Department of
Commerce

We strengthen communities



**HOUSING
HOMELESSNESS**



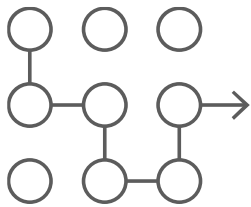
INFRASTRUCTURE



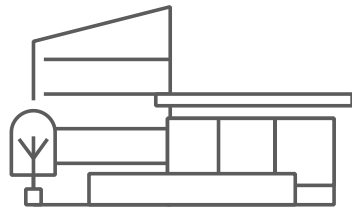
**BUSINESS
ASSISTANCE**



ENERGY



PLANNING



COMMUNITY FACILITIES



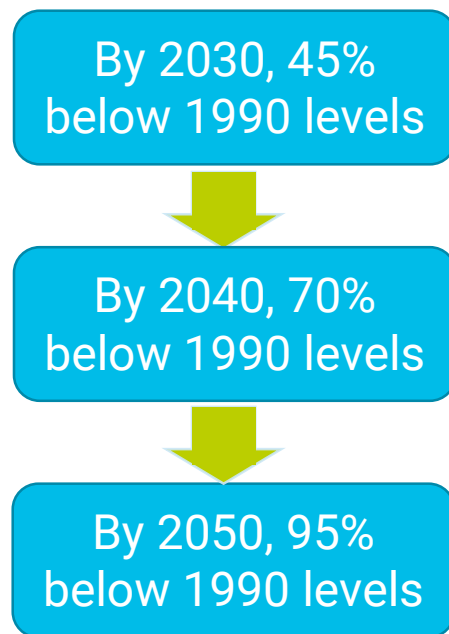
**CRIME VICTIMS &
PUBLIC SAFETY**



**COMMUNITY
SERVICES**

Legislative Framework

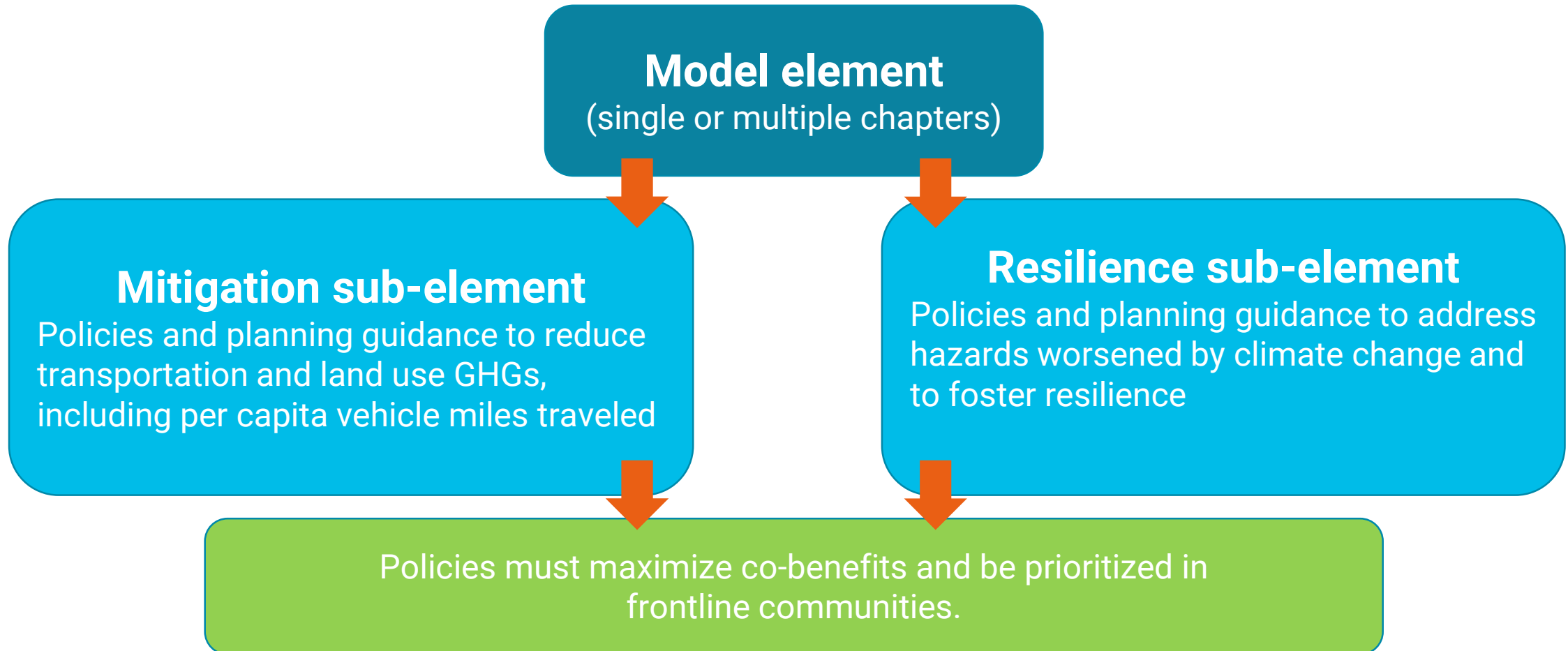
2020: GHG targets (RCW 70A.45.020)



2021: Budget Proviso

- **Create Model Climate Element**
 - Include planning guidance and policies to reduce GHG emissions (mitigation) and foster climate resilience via adaptation, etc.
 - Element would be voluntary, absent additional action (e.g., HB1099).

Climate Model Element Overview



Project Phases

Model Climate Change Element due June 2023

- ✓ Initialization Phase
- ✓ Definition Phase
- Design Phase (current)
- Momentum Phase beginning in September
- Final Draft Phase beginning in March



Climate Program Schedule	Start Date	End Date	% Complete	Q2		Q3			Q4			Q1		Q2		Jul	
				May	Jun	Jul	Aug	Sep	Oct	Nov	Dec	Jan	Feb	Mar	Apr		May
Initialization Phase	10/01/21	12/31/21	100%														
Definition Phase	01/03/22	04/20/22	100%	Definition Phase													
Design and Development Phase	04/21/22	09/20/22	45%							Design and Development Phase							
Momentum Phase	09/21/22	02/27/23	0%											Momentum Phase			
Final Draft Phase	02/28/23	06/30/23	0%														Final D

Stakeholder Engagement

Seeking input from:

- Tribes
- State agencies
- Frontline communities
- 50+ cities and counties
- FEMA
- AWC, WSAC, MRSC, UW CIG, MPOs, Front & Centered



Climate Change Element

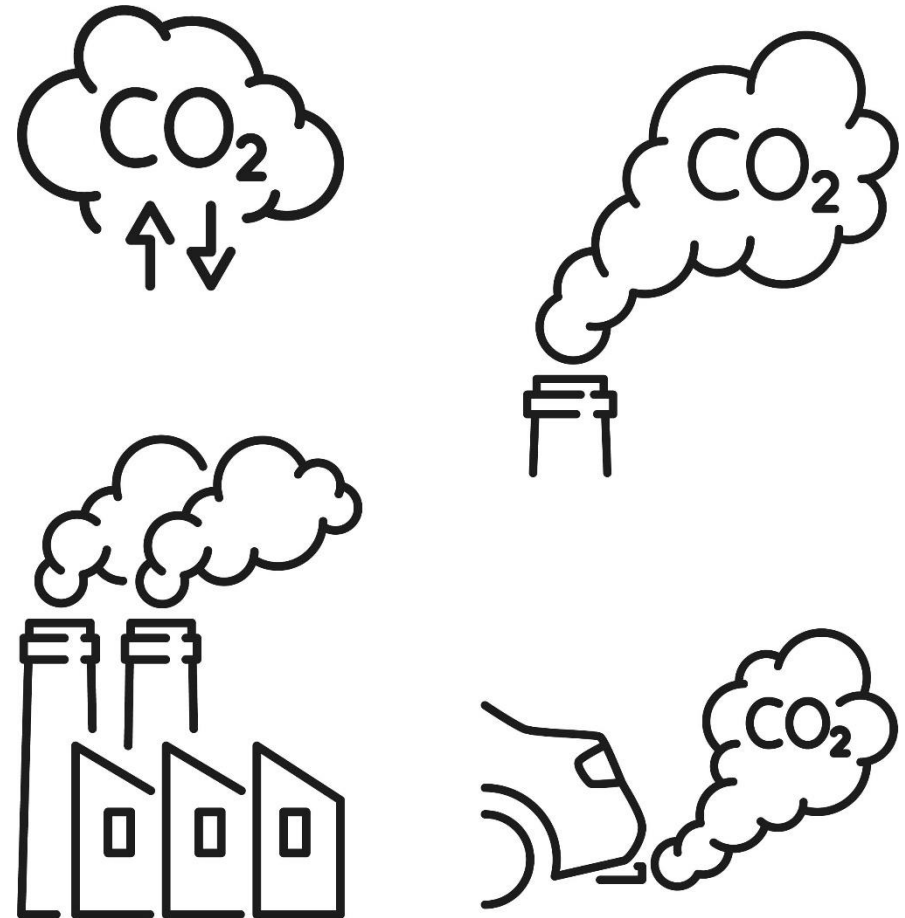
Mitigation and Resilience Sub-Elements



Mitigation Sub-element

“Mitigation” efforts to reduce or prevent emission of greenhouse gases

- Identify actions to reduce GHG to achieve statewide goals RCW70A.45.020(1)
- Measures to reduce vehicle miles travelled (VMT) that can be achieved in all cities – no matter the size.



Significant GHG Emissions Sources

GHG Emission Sources WA Dept. of Ecology – 2018

Electricity (generation/use)

Heating

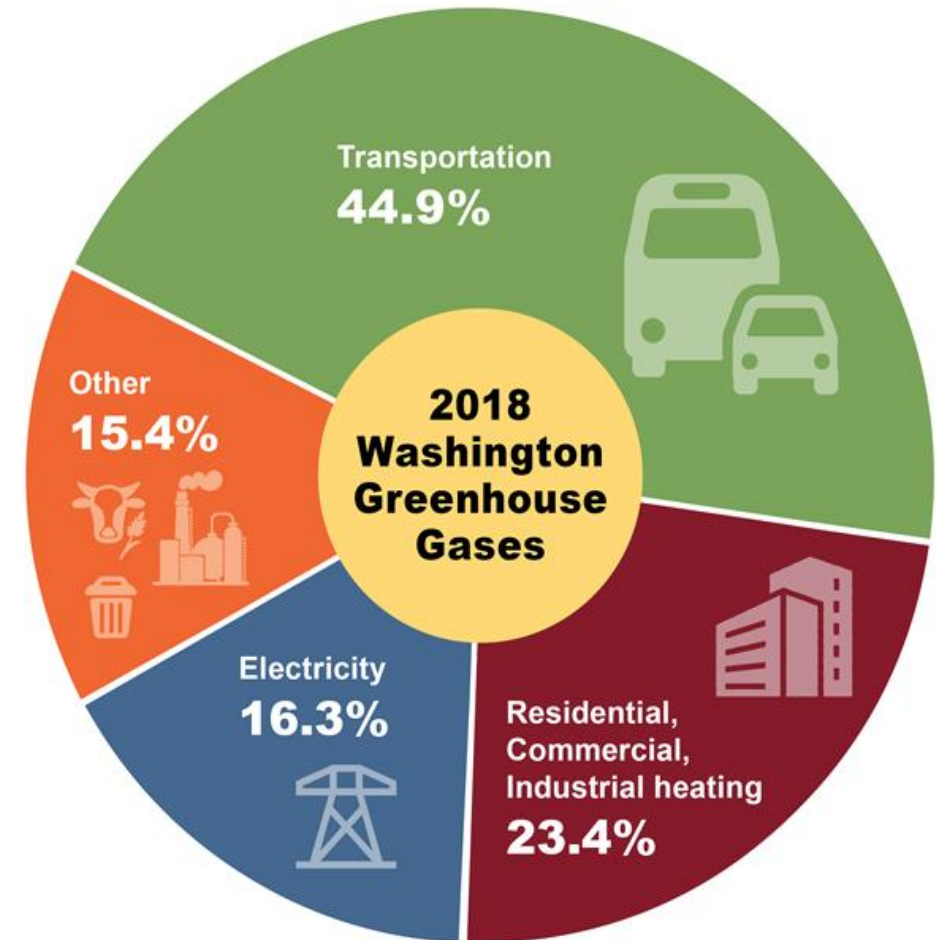
Industrial processes

Landfill/Solid Waste
Management

Natural gas/propane
transport & non-heating uses

Transportation

Wastewater Treatment



Mitigation Guidance

Guidance will provide strategies for reducing GHG Emissions

1: Emission Inventories and VMT Summaries

2: Emission Estimate and VMT Summaries

3: Choose measures (to adopt in your GMA comprehensive plan)
that have been proven to be effective at reducing GHG emissions
or VMT

Mitigation Guidance

1. Determine the most significant GHG emission sources
2. Choose and/or develop GHG reduction goals and policies (measures). Examples provided by Commerce*
3. Measures should be consistent throughout the plan.
4. Adopt and implement goals and policies.

**Goals and policies must have a demonstrated ability to reduce GHG emissions.*

Basis for mitigation goals and policies

Total mitigation goals and policies evaluated for:

- ✓ **Technical effectiveness in reducing GHG emissions**
- ✓ **Feasibility**
- ✓ **Potential environmental justice and equity issues**



Resilience Sub-element



Resilience Sub-element

“Resilience is the ability to prepare for and adapt to changing conditions and withstand and recover rapidly from disruptions.”

– FEMA, *Resources for Climate Resilience*



Resilience Sub-element Components

Planning Guidance :

- Identify and address natural hazards exacerbated by climate change
- Identify, protect, and enhance natural areas and habitat
- Develop resilient infrastructure (green and traditional)

Goals & Policies:

- Recognize and promote co-benefits
- Support environmental justice

Resilience Guidance

Includes framework and tools to analyze climate impacts:

- Shows how to analyze local climate impacts, assess risks, audit plans, and develop and integrate policies.
- Utilizes new online tool from UW CIG to analyze local climate impacts

Select Visualization
View maps of climate data at the resolution of the data. View county-level climate data on graphs and tables.

STATE MAP COUNTY GRAPH COUNTY TABLE

Select County
Select a Washington County by clicking on map or select here.

King

Select Sector and Impact
Select a sector or impact category to view changes in the climate and climate-related natural hazards.

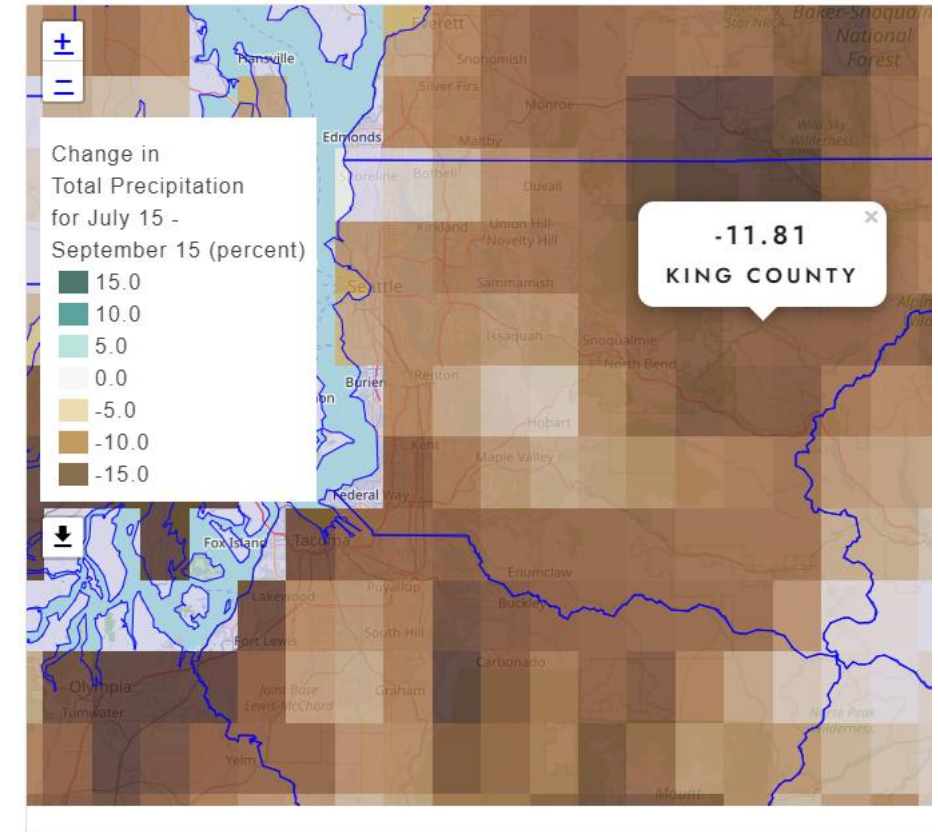
Sector ⓘ Impact

Show All Show All

Select a change in the climate or climate-related natural hazard

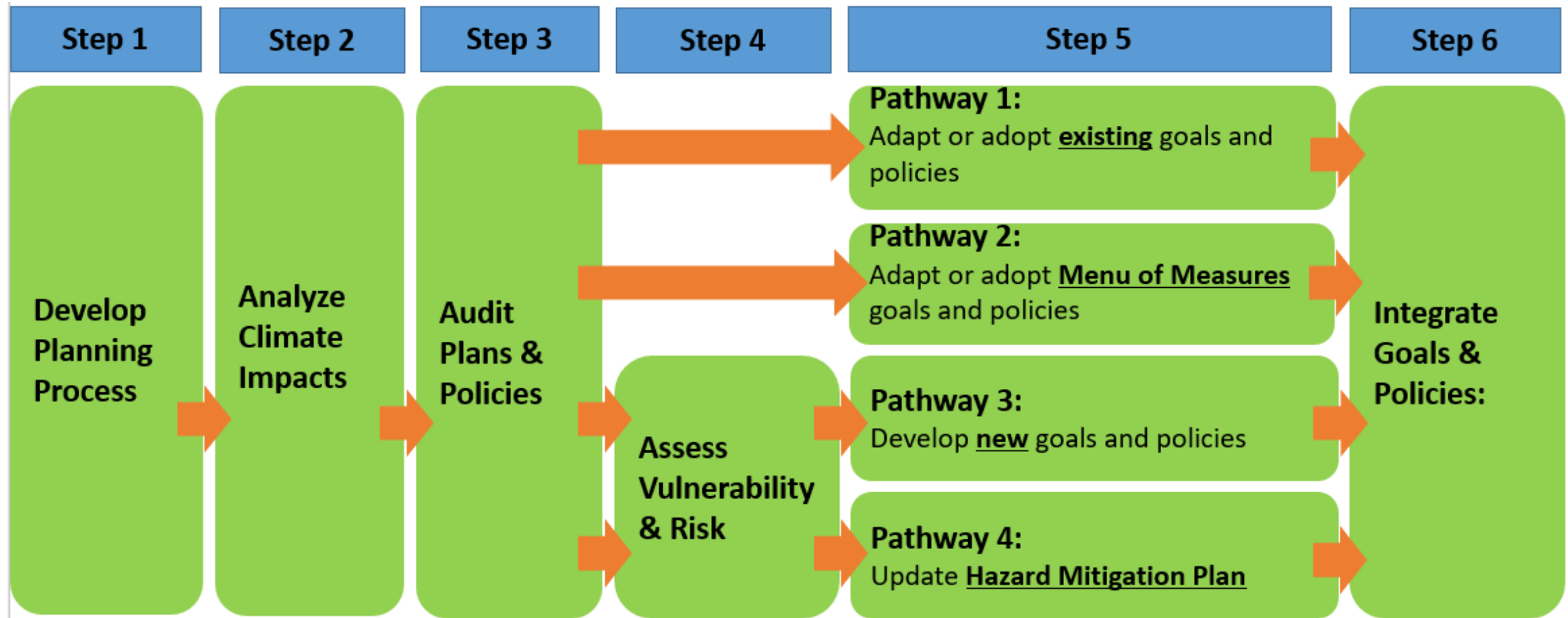
Late Summer Precipitation

Change in average July 15 - September 15 total precipitation, relative to the average for 1980-2009



Resilience Sub-element Guidance (cont.)

Recommends **3 foundational steps**, followed by flexible pathways ...



Climate Change Element

Sectors, comprehensive plan elements, co-benefits and multi-criteria prioritization



Goals and Policies

- Model goals and policies that communities could adapt or adopt
- Policies that support 22 goals within 12 categories [right]
- Assessed for nexus with comprehensive plan elements

1. Agriculture
2. Buildings & Energy
3. Cultural Resources & Practices
4. Economic Development
5. Emergency Management
6. Health
7. Healthy Ecosystems
8. Public Involvement
9. Transportation
10. Waste Management
11. Water Resources
12. Zoning & Development

Maximize co-benefits

- Identify and maximize social, economic, and environmental co-benefits:
 - Housing affordability
 - Salmon recovery
 - Tribal treaty rights
 - Ecosystem services



Prioritization

- Identify and prioritize policies to **uplift** communities impacted most by climate change
- **Front & Centered** leading work with stakeholders to consider equity prioritization method



Example Measures

- **Transportation**

Reduce vehicle miles traveled to achieve greenhouse gas reduction goals.

- Promote congestion pricing and tolling when designing and building new facilities.

Comp Plan Nexus:
Transportation

- **Healthy Ecosystems**

Enhance tree canopy cover to boost carbon sequestration and climate resilience.

- Actively manage forests to decrease climate-exacerbated risks from severe wildfires, protect residents, and improve ecosystem health and habitat.

Comp Plan Nexus:
Land Use, Environment, Parks

Climate Program – Next Up

Available on the Climate Program [Website](#)

- Collaborator dashboards
- Subscribe to climate program listserv
- Grant availability and updates
- Final draft for public review beginning in March 2023

Climate Program

The Washington State Legislature tasked the Department of Commerce to initiate a multiyear project that would develop guidance for counties and cities to address climate change issues within their comprehensive plans. The guidance will focus on mitigation (greenhouse gas reduction) and resilience (preparation for adverse effects from climate change).



Key Topics

- Growth Management
- Governor's Smart Communities Awards Program
- Climate Program
- GMA Laws and Rules
- GMA Periodic Update
- Growth Management Grants
- Growth Management Topics
- Guidebooks and Resources
- Civilian-Military Compatibility
- Defense Community Compatibility
- Regional Planners' Forums
- Short Course on Local Planning
- Submitting Materials to the State for Review

Contact

Sarah Fox, AICP, Climate Program Manager
Gary Idleburg, Mitigation Lead
Michael Burnham, Resilience Lead
GMSClimate@commerce.wa.gov
Phone: 360-725-3114

Program Updates

- New – CivicSpark – Fellowship Application Information – August 2022
- New – Press Release Grant Awards – July 2022
- New – Climate Grant Awardees – July 2022 (PDF)
- Climate Program Update – January 2022 (PDF)

Program Overview

The Washington Department of Commerce is developing a model element to help cities and counties address climate change in their comprehensive plans. The model element will include mitigation (greenhouse gas reduction) and resilience (climate impacts, preparedness, response, and recovery) planning guidance, as well as a model charter with

Subscribe

To sign up for climate program updates or to access your subscriber preferences, please enter your contact information below.

*Email Address



Washington State
Department of
Commerce

www.commerce.wa.gov



Questions?

GMSClimate@commerce.wa.gov

SARAH FOX, CLIMATE PROGRAM MANAGER

MICHAEL BURNHAM, RESILIENCE LEAD

GARY IDLEBURG, MITIGATION LEAD

Climate Program Website:
<https://www.commerce.wa.gov/serving-communities/growth-management/growth-management-topics/climate-change/>