

VISION 2050

Comprehensive Planning Overview

Equity Advisory Committee | May 5, 2022



Puget Sound Regional Council

Overview

- Local Planning Framework
 - VISION 2050
 - PSRC's Plan Review Program
 - Q & A
-
- Equity Planning Guidance
 - Discussion



Committee Questions

- What aspects of VISION 2050 or comprehensive planning do you have questions about?
- How should the Regional Equity Strategy support local comprehensive plan updates?

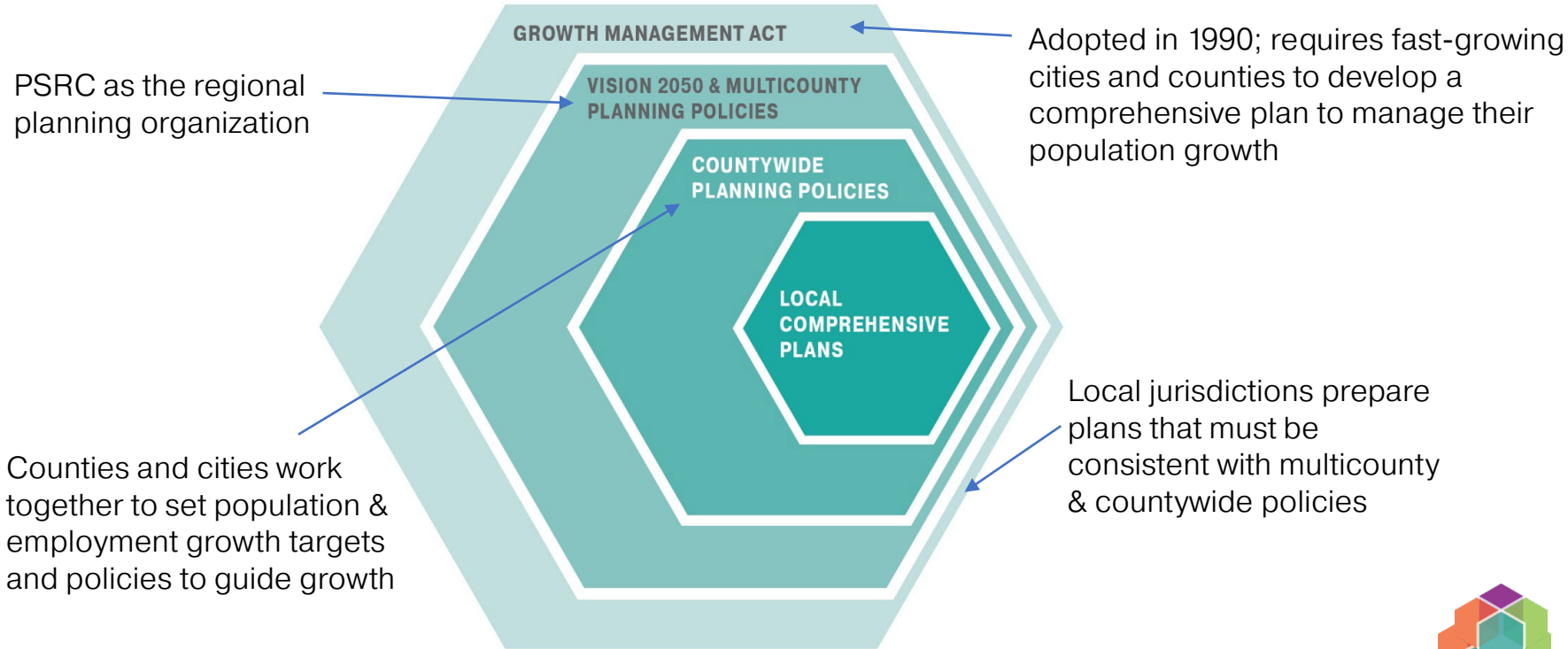


Policy Objectives

- Create meaningful, community-driven vision for local communities
- Forward-looking planning for growth
- Collectively plan to address interconnected regional issues, like mobility, climate, affordability, and equity



Planning in Washington State



PSRC certifies countywide planning policies and local plans



Comprehensive plan elements

Comprehensive plan: a 20-year plan with long-term goals, policies, and actions that guide decisions

Required elements

- Land Use
- Housing
- Capital Facilities
- Utilities
- Transportation
- Rural (counties only)
- Ports (where applicable)

Optional (but common our region):

- Environment/Sustainability
- Economic Development
- Parks and Recreation

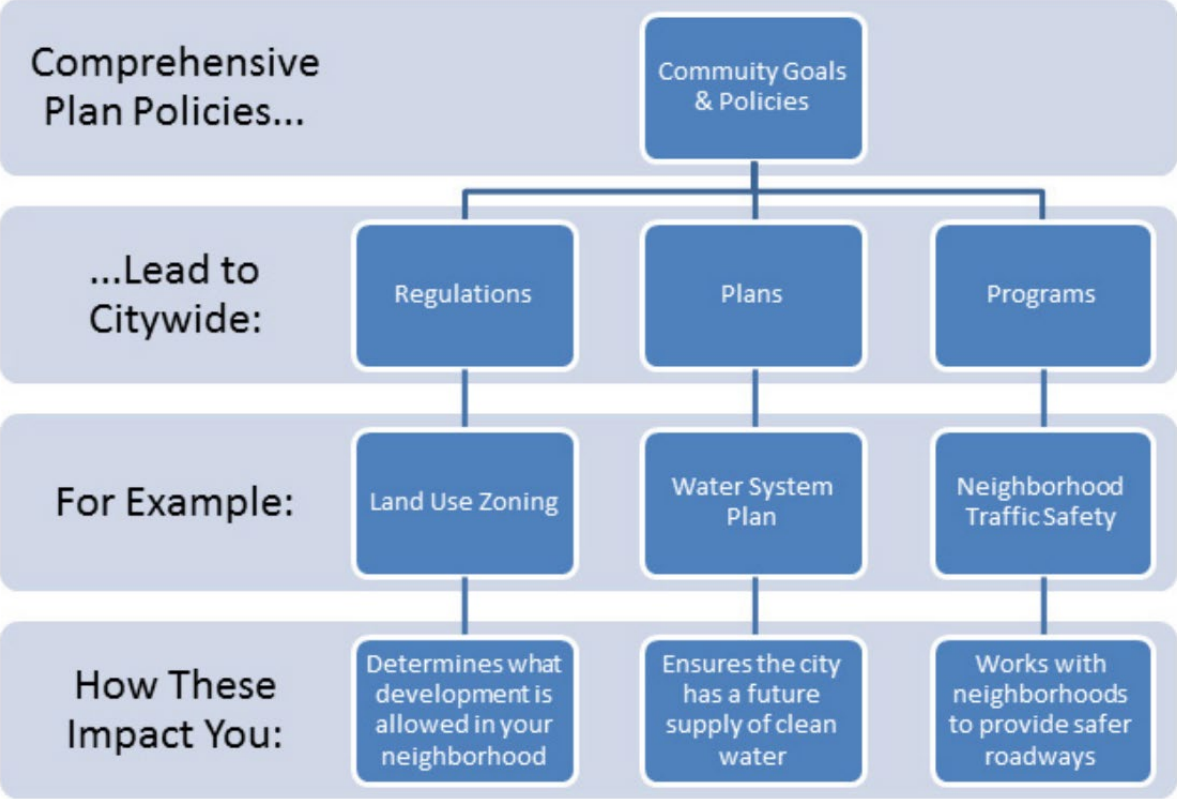


Comprehensive plan basics

- Plans updated every 10 years, next due Dec 31, 2024
- Plan elements include background, data and analysis, forward-looking goals and policies
- Public participation required under the Growth Management Act
- State may provide comments but doesn't formally approve plans












Comprehensive plan basics



VISION 2050



VISION 2050 works to...

-  Increase **housing** choices and affordability
-  Provide **opportunities** for all
-  Sustain a strong **economy**
-  Significantly reduce greenhouse gas **emissions**
-  Keep the region **moving**
-  Restore the health of **Puget Sound**
-  Protect a network of **open space**
-  Growth in **centers** and near **transit**
-  Act **collaboratively** and support **local efforts**



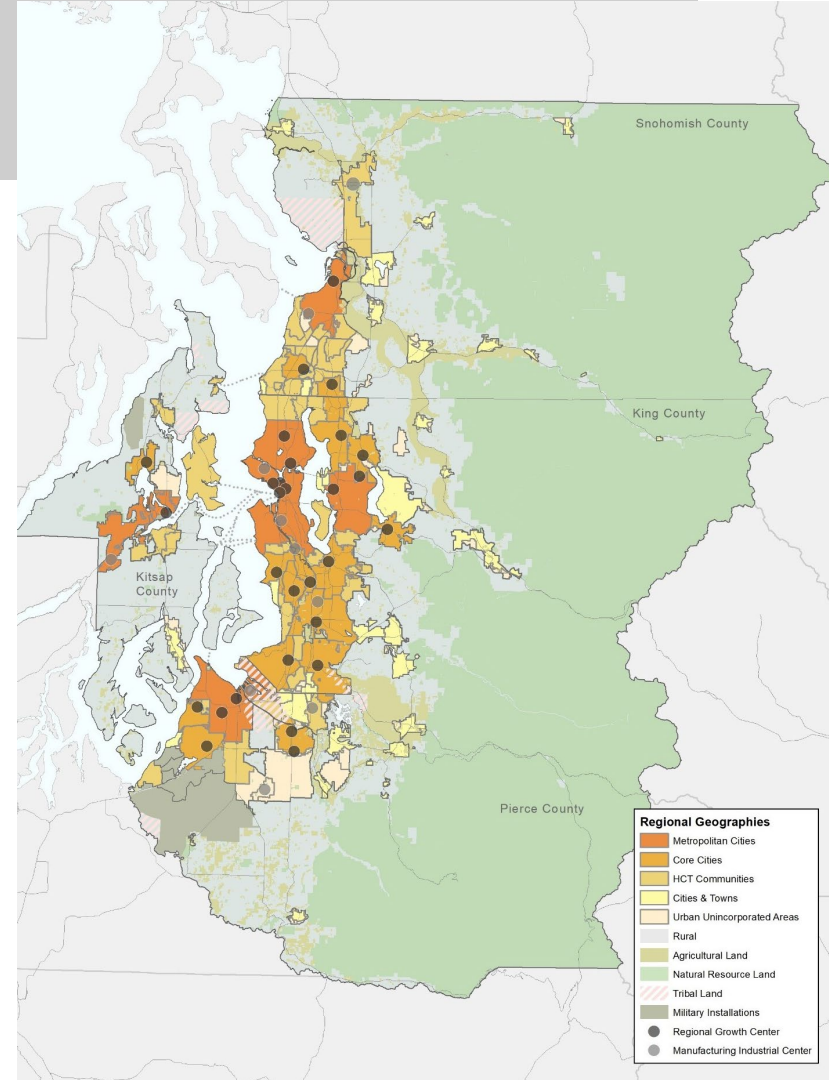
What's different from VISION 2040?

- Extends planning horizon to **2050**
- Updated growth strategy and aims for **more growth near transit**
- Advocates for **sustainable funding** sources
- Increases recognition of **Native Tribes** and **military installations**
- New chapter on **climate change**
- Directs a **regional housing strategy**
- Directs a **regional equity strategy** and consideration of forming an equity advisory group



Regional Growth Strategy

- Regional strategy where and how to grow
- Goals:
 - Focus growth in cities and centers
 - Diversity of communities
 - Better balance of jobs and housing across the region
 - Leverage investment in transit and services
 - Preserve farms and forests
- 65% of region's population growth and 75% of employment growth in regional growth centers & near high-capacity transit





Goals: Overarching plan objectives



Policies: Multicounty principles for regional and local planning



Actions: Step to implement policies



Regional Growth Strategy: numeric strategy to plan for new growth

Policy Sections

- Regional Collaboration
- Regional Growth Strategy
- Environment
- Climate Change
- Development Patterns
- Housing
- Economy
- Transportation
- Public Services



Equity in VISION 2050

- Expanded focus in plan
- Actions and policies across all chapters
- Equity analysis included in environmental review
- Displacement risk mapping



Regional Equity Strategy

Equity Impact Tool: Equity assessment and understanding community impacts, opportunities and benefits

Data: Equity Tracker, Displacement Risk and Opportunity mapping

Public Participation: Equitable Engagement Guidance

Equity Planning Guidance: Policies to recognize and address barriers



VISION 2050

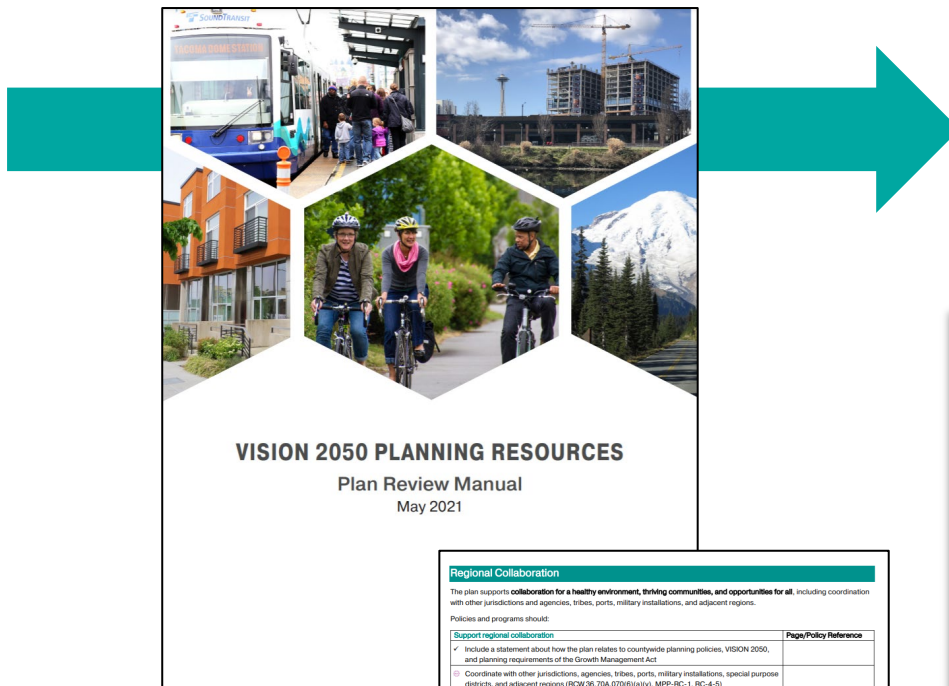
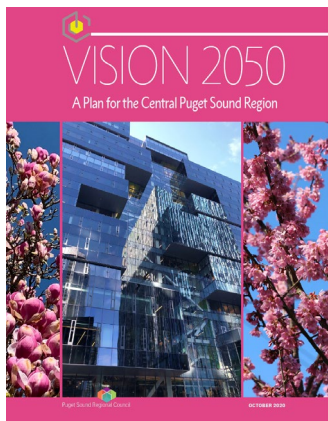
Upcoming Planning Work





Plan Review

Plan Review Manual

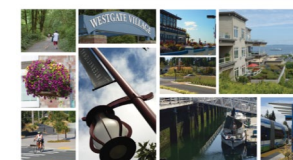


VISION 2050 PLANNING RESOURCES Plan Review Manual May 2021

Regional Collaboration	
<p>The plan supports collaboration for a healthy environment, thriving communities, and opportunities for all, including coordination with other jurisdictions and agencies, tribes, ports, military installations, and adjacent regions.</p> <p>Policies and programs should:</p>	
Support regional collaboration	Page/Policy Reference
<ul style="list-style-type: none"> ✓ Include a statement about how the plan relates to countywide planning policies, VISION 2050, and planning requirements of the Growth Management Act. ☐ Coordinate with other jurisdictions, agencies, tribes, ports, military installations, special purpose districts, and adjacent regions (ROW 36.70A.0706(a)(iv), MPP-RC-1, RC-4-5) ☐ Prioritize services and access to opportunity for people of color, people with low incomes, and historically underserved communities to ensure all people can attain the resources and opportunities to improve quality of life and address past inequities (MPP-RC-2) ☐ Address land use, transportation, and housing opportunities and challenges related to military installations, when applicable (MPP-RC-6) ✓ Prioritize investments in centers, including regional centers, countywide centers, high-capacity transit areas with a station area plan, and other local centers (MPP-RC-3-9) ✓ Explore funding sources, changes to regulatory, pricing, taxing, and expenditure practices, and other fiscal tools to meet infrastructure and other needs (MPP-RC-10-11, RC-Action-7, RC-Action-9) 	
<p>Additional comments on Regional Collaboration or additional documents to share (optional): _____</p>	

2012 King County Countywide Planning Policies

With amendments ratified by June 25, 2016



City of Edmonds Comprehensive Plan

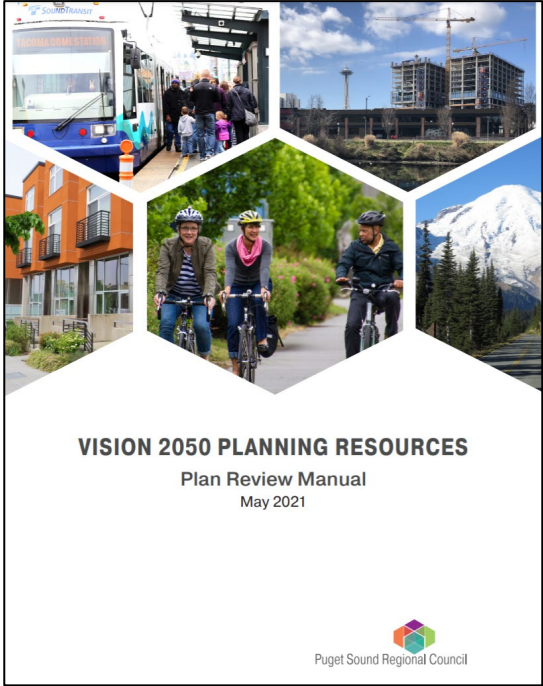


Adopted July 28, 2015
Updated December 15, 2017

Updating the manual implements VISION 2050's RC-Action-1



Plan Review Manual



VISION 2050 Consistency Tools

Tools should be used throughout the planning process

VISION Consistency Tool for Local Comprehensive Plans

Note: The tool shown here is for illustrative purposes. To fill out the tool, visit www.psrc.org/our-work/plan-review.

This tool is intended to help cities and counties integrate VISION 2050 into their local comprehensive plans. VISION 2050's multicounty planning policies serve as the adopted regional guidelines and principles required in state law to guide both regional and local planning. The tool also identifies transportation planning requirements of the Growth Management Act (GMA). The tool may be used at various times in the local planning process:

- Plan Update Scoping:** Use checklist items as guidance for scoping the extent of plan element updates. New or expanded issue areas in VISION 2050 are identified to support this process.
- Draft Plan Review:** Submit draft plans to PSRC prior to Planning Commission and Council review. Completing and submitting this tool and providing early drafts to PSRC help identify potential consistency issues early in the process.
- Certification Review:** Along with the adopted plan, the tool will assist in PSRC's review of the plan. Demonstrating inclusion of the necessary information in the checklist helps facilitate certification. *Note: The PSRC Executive Board is the final decision-making body for plan certification.*
- Regional Collaboration:** The tool provides cities and counties an opportunity to highlight supports sharing of best practices across the region and benefits jurisdictions as they

Resources

- Regional Plans: [VISION 2050](#), [Regional Transportation Plan](#), and [Regional Economic Development Plan](#)
- [VISION 2040 to VISION 2050](#) – summary of what changed in VISION 2050
- [VISION 2050 Policy Matrix](#) – a comparison of multicounty planning policies and a comparison of local policies to VISION 2050
- [Plan Review Manual webpage](#) – access more information about the review and certification process and other resources by policy area. See previous [certification reports](#) for areas that have been reviewed.

Regional Collaboration

The plan supports **collaboration for a healthy environment, thriving communities, and opportunities for all**, including coordination with other jurisdictions and agencies, tribes, ports, military installations, and adjacent regions.

Policies and programs should:

Support regional collaboration	Page/Policy Reference
<ul style="list-style-type: none"> ✓ Include a statement about regional collaboration and planning requirements 	
<ul style="list-style-type: none"> ⊗ Coordinate with other jurisdictions, agencies, tribes, ports, military installations, special purpose districts, and adjacent regions (RCW 36.70A.070(6)(a)(v), MPP-RC-1, RC-4-5) 	
<ul style="list-style-type: none"> ⊗ Prioritize services and access to opportunity for people of color, people with low incomes, and historically underserved communities to ensure all people can attain the resources and opportunities to improve quality of life and address past inequities (MPP-RC-2) 	
<ul style="list-style-type: none"> ⊗ Address land use, transportation, and housing opportunities and challenges related to military installations, when applicable (MPP-RC-6) 	
<ul style="list-style-type: none"> ✓ Prioritize investments in centers, including regional centers, countywide centers, high-capacity transit areas with a station area plan, and other local centers (MPP-RC-8-9) 	
<ul style="list-style-type: none"> ✓ Explore funding sources, changes to regulatory, pricing, taxing, and expenditure practices, and other fiscal tools to meet infrastructure and other needs (MPP-RC-10-11, RC-Action-7, RC-Action-9) 	

Icons show new or expanded focus areas

Additional comments on Regional Collaboration or additional documents to share [optional]: _____



Possible Certification Outcomes

Certification	Conditional Certification	Not certified
<ul style="list-style-type: none">▪ Fully consistent with VISION 2050, the Regional Transportation Plan, and state law requirements	<ul style="list-style-type: none">▪ Meets majority of planning requirements▪ Requires limited additional work for full conformity▪ Still eligible for regional funding, provided conditions of approval are followed	<ul style="list-style-type: none">▪ Inconsistent with VISION 2050, Regional Transportation Plan, or state law requirements

PSRC's Executive Board is the final decision-making body for plan certification.



Plan Review Process

Planning Process

Growth Targets/CPPs		Plan Scoping/Outreach/SEPA		Plan/Policy Development		Plan Adoption			
2021		2022		2023		2024		2025	
Coordination with PSRC		Use VISION Consistency Tool for scoping		Ongoing technical assistance		Submit completed tool & draft plan for review		Submit adopted plan and updated tool for final review and certification	



NEW! Resources Webpage

Existing Resources:

- Housing Innovations Program (HIP)
- Growth Targets Guidance
- Economic Development Element Guide
- Displacement Risk & Opportunity Mapping
- Data products
- Peer Networking

Forthcoming guidance on VISION 2050 focus areas:

- Housing Strategy
- Equity Strategy
- Planning for TOD
- Equitable Engagement
- Multimodal Concurrency
- Climate Change

VISION 2050 Planning Resources

PSRC develops guidance, research, and data products to support local planning and advance VISION 2050. Browse resources below by policy topic area.



Regional Plans

- > VISION 2050
- > Regional Transportation Plan
- > Regional Economic Strategy

Guidance by Policy Topic Area (from PSRC and partner agencies)

Regional Collaboration

Regional Growth Strategy

Environment

<https://www.psrc.org/vision-2050-planning-resources>



Outreach Program

Plan Review Workshops:

- PSRC, Commerce & MRSC
- Kick-off in Summer 2022
- Topic specific workshops:
 - Housing
 - Climate
 - Equity
 - Economic Development



Questions

A scenic view of a city skyline at sunset or sunrise, with a body of water in the foreground and a person walking on a path in the distance. The sky is filled with soft, golden light and scattered clouds. The city skyline is visible in the background, with several tall buildings. In the foreground, there is a body of water and a person walking on a path. The overall atmosphere is peaceful and serene.

- What aspects of VISION 2050 or comprehensive planning do you have questions about?
- How should the Regional Equity Strategy support local comprehensive plan updates?



Equity Planning Resources

Meeting Objectives

Today: Introduce project purpose and need, initial discussion

June meeting: Example materials, response to EAC feedback



Housing Element and HB 1220

Bill updated housing element requirements and called for identifying:

- Areas of high displacement risk
- Local policies and regulations that result in racially disparate impacts, displacement, and exclusion in housing
- Policies and regulations to address and begin to undo racially disparate impacts, displacement, and exclusion in housing caused by local policies, plans, and actions

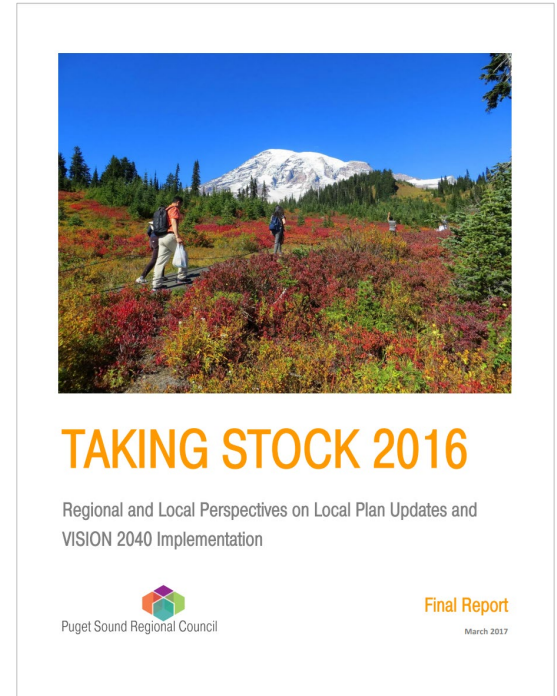
WA Department of Commerce working on guidance, rulemaking



2015/16 Assessment

Jurisdictions have begun to recognize need to address equity in plans and policies

- Need to go beyond standard practices to assess equity impacts
- Lack clear mandates
- Relatively little guidance, best practices, and tools
- Consequently, equity is often a secondary consideration



Local Government Survey Results

Focus areas:



Housing



Transportation



Climate



Equity

Local needs for updates:

- Information on requirements and what has changed
- Communication with PSRC throughout the plan development process



Needs Identified by Local Planners

“Guidance on key principals to address equity in planning.”

“How should we practically implement ESJ into our comprehensive plan?”

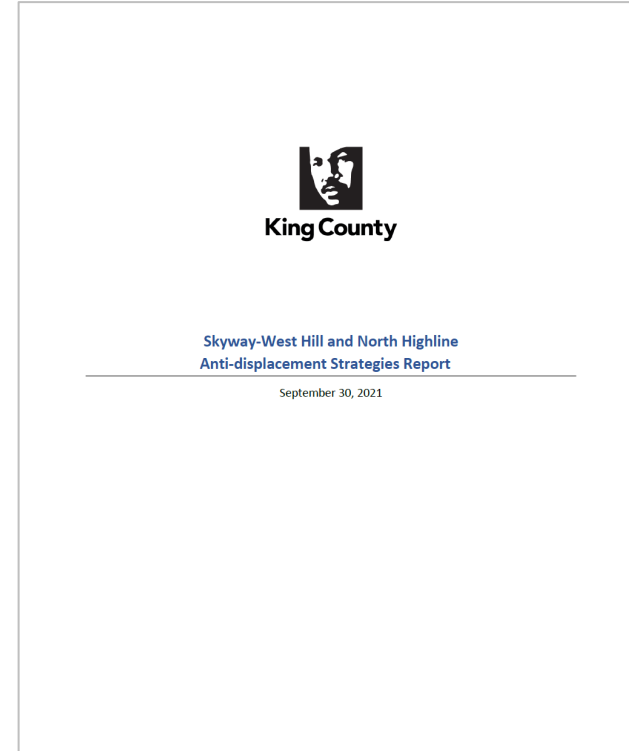
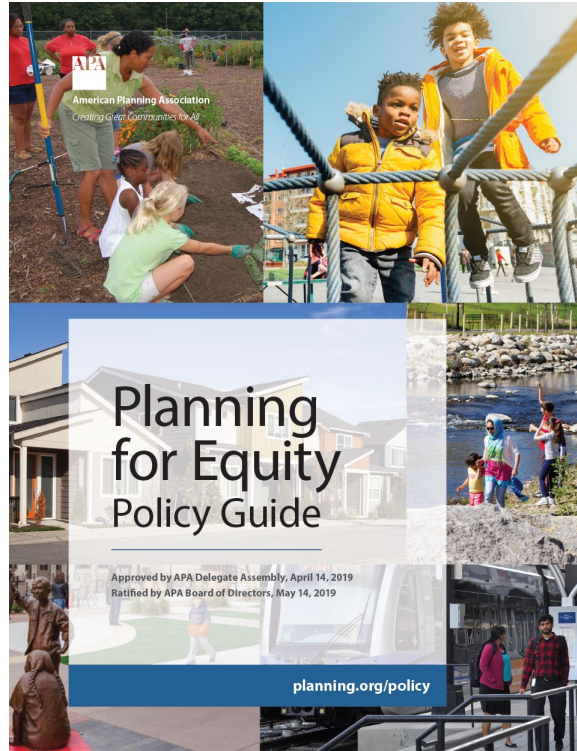
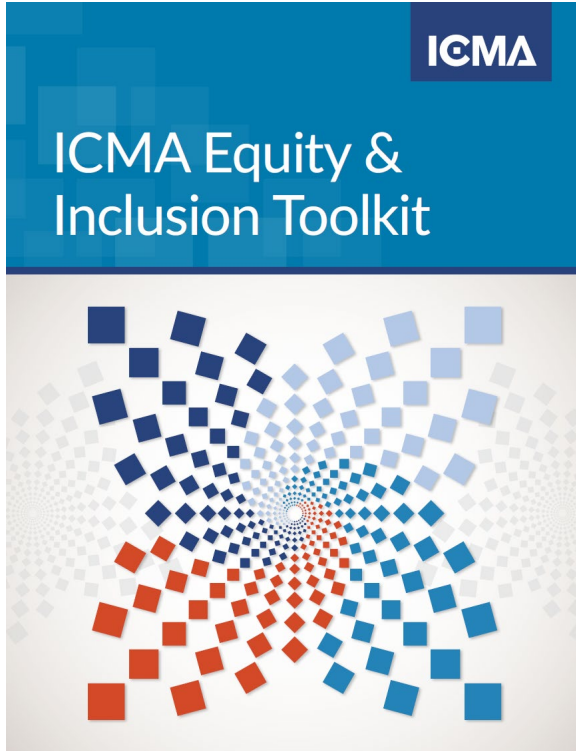
“Examples of how equity has been or could be integrated into each element would be useful (including implementation strategies)”

“Provide specific guidance and training on how to incorporate the ideas and strategies within into the comprehensive plans”

“Understanding requirements, a checklist”



Existing Resources



Project Phases

Phase 1: Resources and sample policies organized by VISION 2050's main policy areas to support jurisdictions in this process.

These policy areas include: Regional Collaboration, Regional Growth Strategy, Environment, Climate Change, Development Patterns, Housing, Economy, Transportation, and Public Services

Phase 2: Identify other plans and planning processes in the region where equity could be better addressed or centered in the work



Policy by chapter - Equity-related items from the comp plan checklist

- Background
- Highlight external planning resources
- Provide examples (especially local ones) where available
- Relevant data resources

Highlight other interesting planning work, especially outside the region



Questions

The background image shows a high-angle view of a boat's deck. A large, light-colored fishing net is spread out across the deck. A person is standing on the deck, looking towards the net. The boat is moving through blue water, with white foam from the wake visible. A red traffic cone is partially visible in the bottom right corner.

- Do you have any feedback on this suggested approach to the Equity Planning Resources?
- What do you want your local community planners to know when creating the next comprehensive plan?
- Thinking about how you live, work, and get around in your community, do you see any examples of inequity that could be addressed through planning?

Thank You

Liz Underwood-Bultmann, AICP
Principal Planner
LUnderwood-Bultmann@psrc.org

Maggie Moore
Senior Planner
MMoore@psrc.org

Erin Hogan
Associate Planner
EHogan@psrc.org

